



Water Resources Policy Plan Advisory Group

Meeting #4



December 9, 2022

Agenda

- **Welcome and Introductions**
- **Mentimeter Question**
- **Water Reuse White Paper Discussion**
- **Water Quality White Paper Discussion**
- **Next Steps**
- **Plus/Delta**



**If you don't know where you are going,
you might end up someplace else.**

~ Yogi Berra

Welcome!

Housekeeping Information

Use Both Video and Microphones: When speaking turn on both; turn off mic when not.

* We know there might be internet problems and we can adjust *

Try to Limit External Distractions: Turn off email & phones. Be here now.

* We know there are always exceptions, please let us know by chat if you step away *

Problems May Occur: It happens... we'll get through this.

* Please email Shannon Skally if you can't get back to us *



Introductions

When called on, please say your:

- **Name**
- **Title**
- **Organization**



What is your preference?

Go to www.menti.com and use the code 2917 6645

What format would you prefer for future WAG meetings?

Mentimeter



Water Reuse White Paper Discussion



Water Reuse



Paper Contents:

- Introduction
- Issue Statement
- Our Role
- Crucial Concerns
- Connections to Current Policy
- Draft Policy Proposals and Implementation Strategies
- Next Steps

Water Reuse



Issue Statement

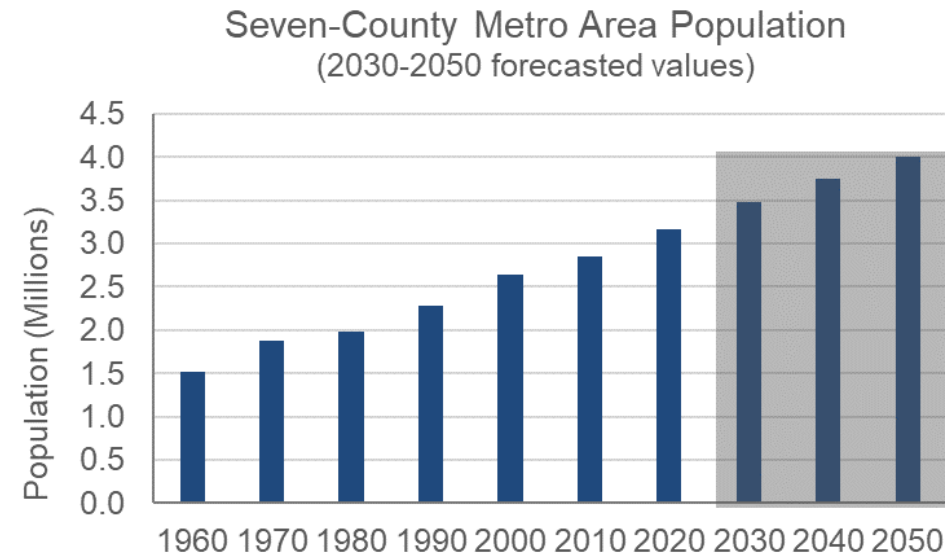
Sustainable water resources are a necessary component of a growing prosperous region. Contamination, potable water demand, regulatory usage limits, and changes in climate may compromise the availability and quality of metro area water resources.

Currently, we lack a clear process to implement reuse in Minnesota that is adequately protective and includes flexible regulatory guidance. A Met Council-, state agency-, and regional stakeholder-developed process is needed to accelerate and expand implementation of water reuse in the region. Strong regional water policies and associated actions are necessary to promote water reuse and set the stage for a future with sustainable water resources in the region.

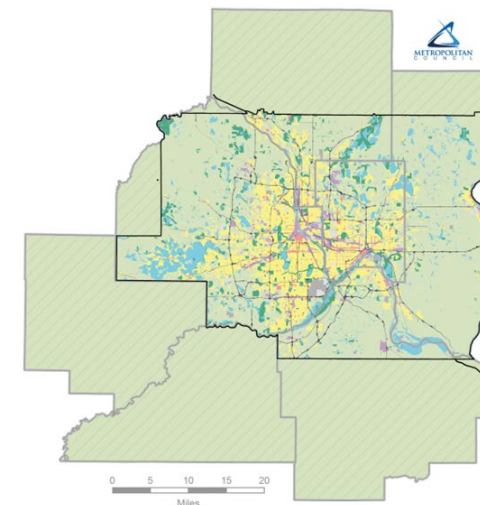
Water Reuse

Primary Drivers

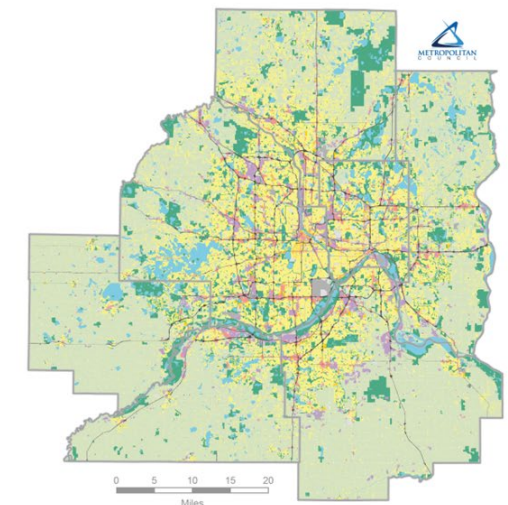
- Population Growth
- Urbanization
- Climate Change
- Increased irrigation
- Increased industry



Metro Area Land Use 1968



Metro Area Land Use 2020



Water Reuse

Primary focus

Stormwater

- Lack of clear regulatory guidance
- Public health risks
- Expensive
- Reduces demand on surface/groundwater

Wastewater

- Clear regulatory guidance
- Expensive
- High levels of chloride barrier for reuse
- Other contamination concerns



Let's head into Mural

Brainstorm



<https://app.mural.co/t/metcounciles5702/m/metcounciles5702/1669923482969/72bc52d670f175902d1eb89c2d7cecf5298ec503?sender=jenniferkostrzewski2240>

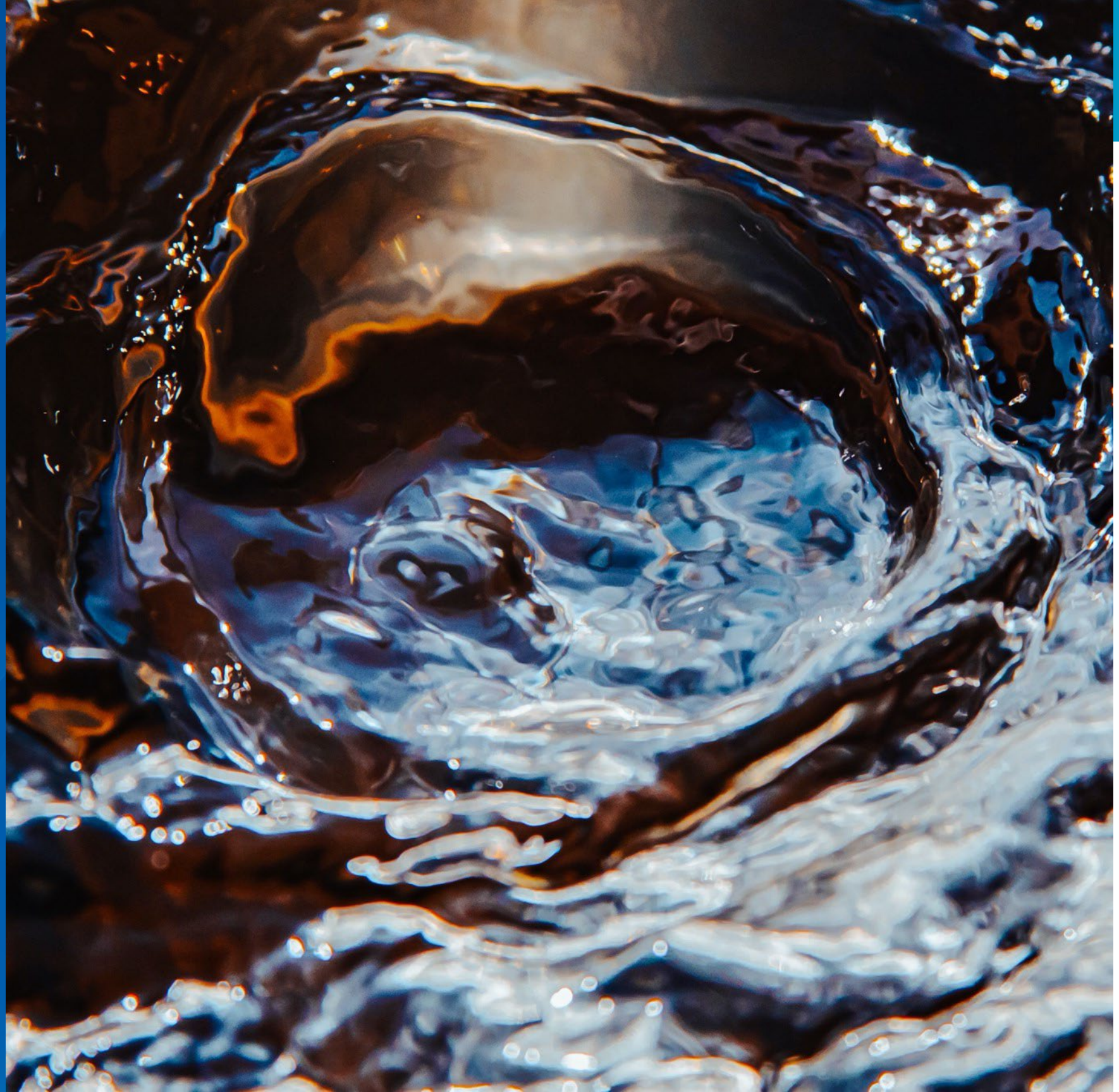
Action Items



BREAK!



Water Quality White Paper Discussion



Water Quality



Paper Contents:

- Introduction
- Issue Statement
- Our Role
- Primary Drivers
- Contaminants of Concern
- Connections to Current Policy
- Policy/Action Recommendations
- Next Steps

Water Quality



Issue Statement

Water quality contamination and its consequences impacts public health, ecosystem function, and affects regional economic competitiveness.

The metro region is experiencing increased pollutant-loaded runoff, a growing list of water impairments, contaminated drinking water supplies, and high utility treatment costs.

Uncertainty around emerging contaminants, regulatory changes, and climate change intensifies these issues, and complicates how to address water contamination.

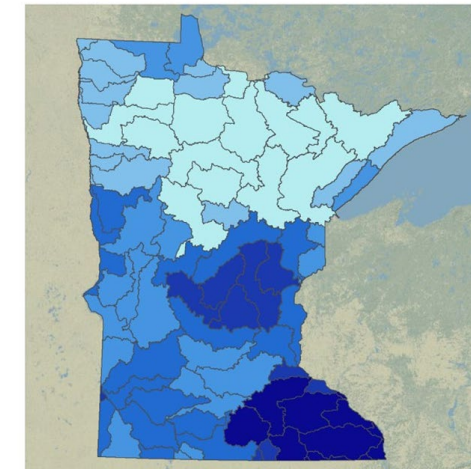
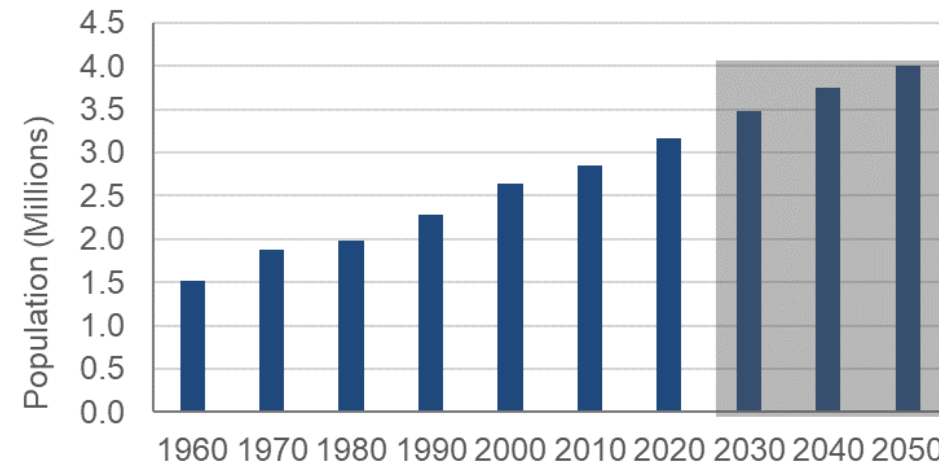
Strong, regional water policies are necessary to restore and protect the quality of our waters and to ensure their resiliency to known and future contamination threats.

Water Quality

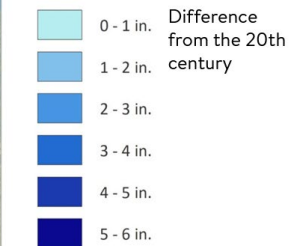
Primary Drivers

- Population Growth
- Land Use Change
- Climate Change
- Regulation
- Costs/ Benefits
- Emerging Concerns

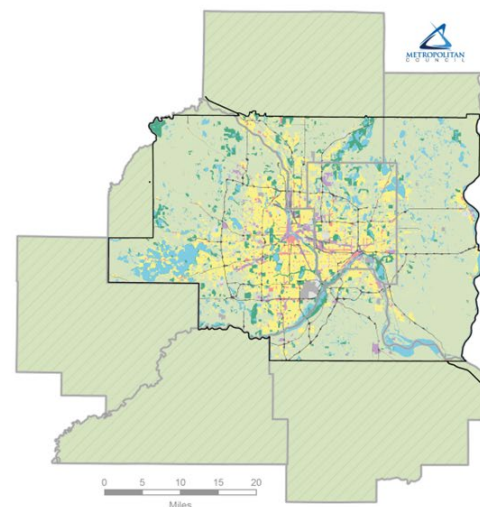
Seven-County Metro Area Population
(2030-2050 forecasted values)



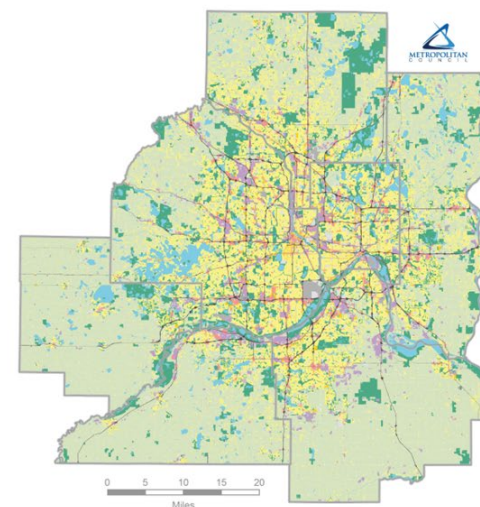
Annual precipitation change 2000-2019
Annual precipitation change by watershed for 2000-2019, compared to 20th century averages. Minnesota is getting wetter, especially the southern parts of the state.



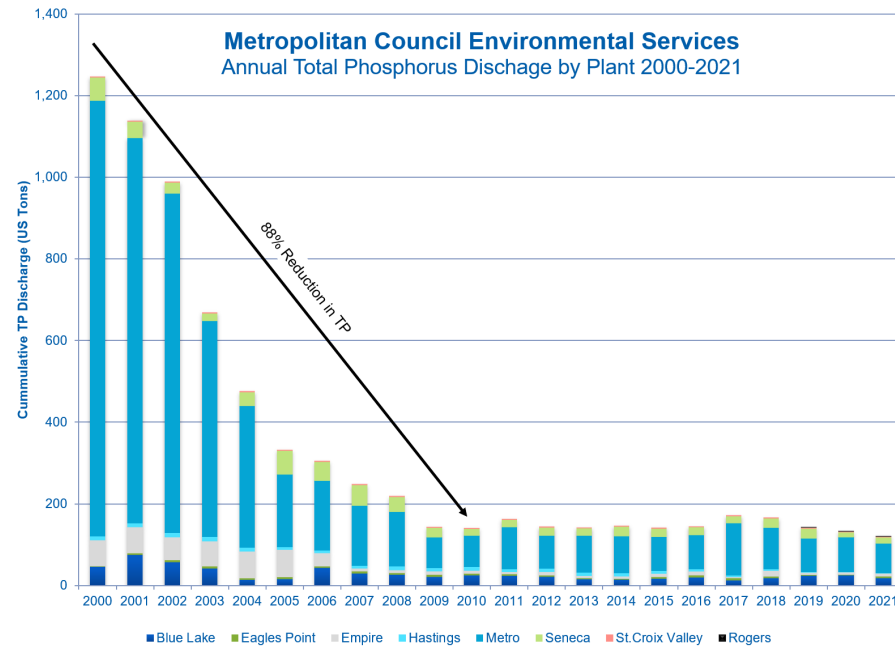
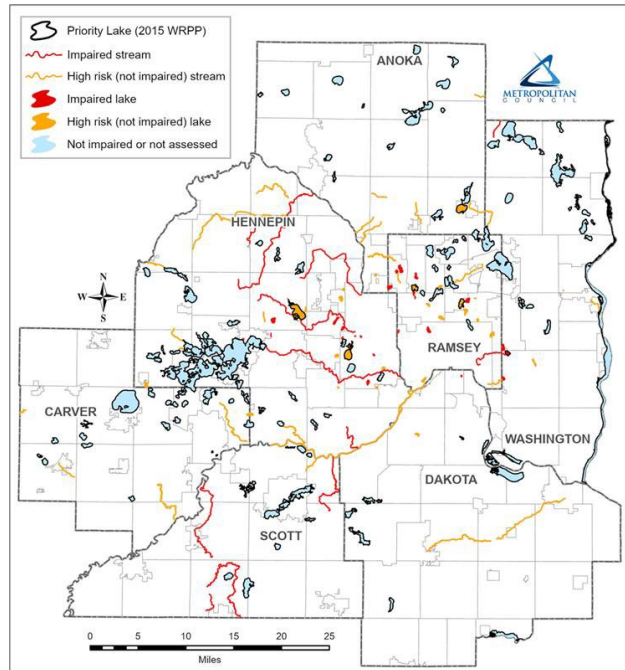
Metro Area Land Use 1968



Metro Area Land Use 2020

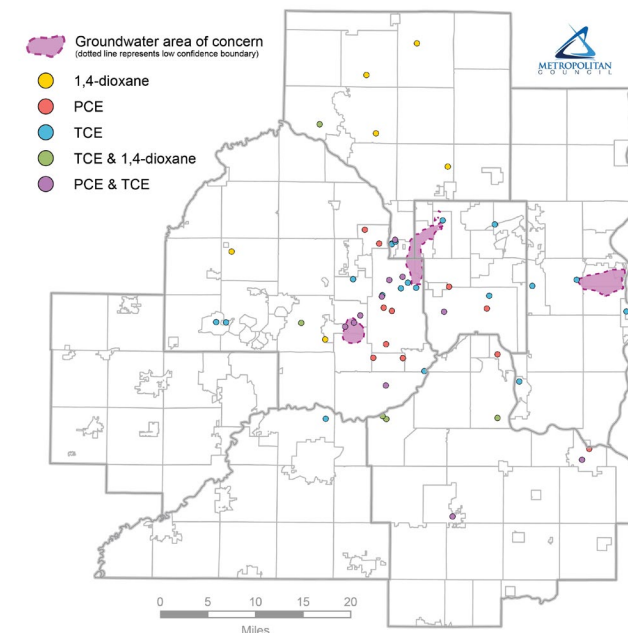
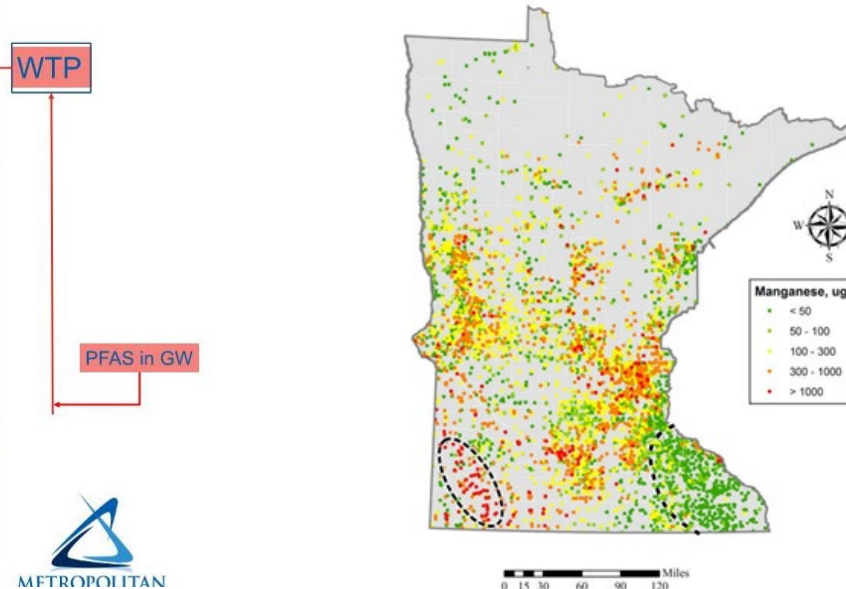
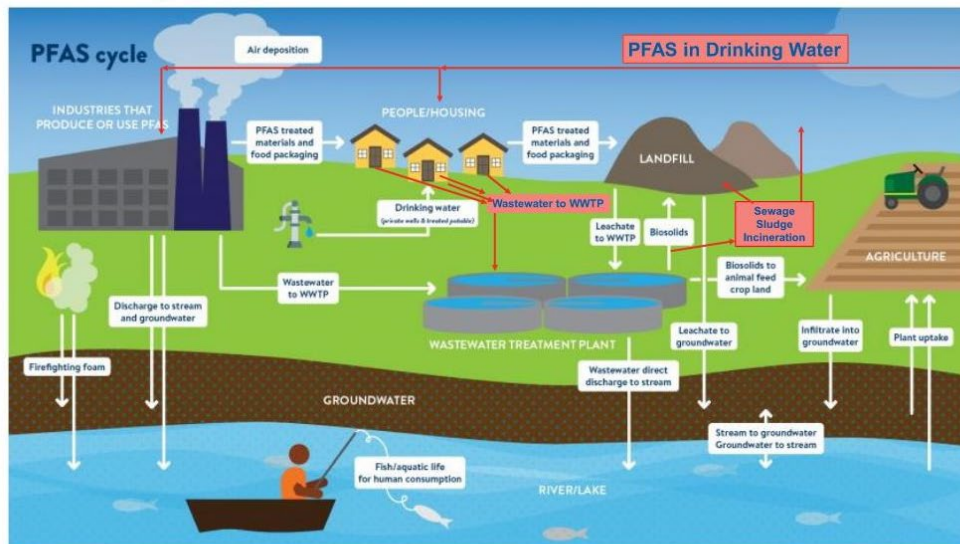


Water Quality



Contaminants of Concern

- Chloride
- Nutrients
- PFAS
- Manganese & Volatile Organic Compounds



Original image from MPCA, adapted by Environmental Services PFAS Team



Let's head back into Mural

Brainstorm



Action Items



M U R A L

<https://app.mural.co/t/metcounciles5702/m/metcounciles5702/1669923482969/72bc52d670f175902d1eb89c2d7cecf5298ec503?sender=jenniferkostrzewski2240>

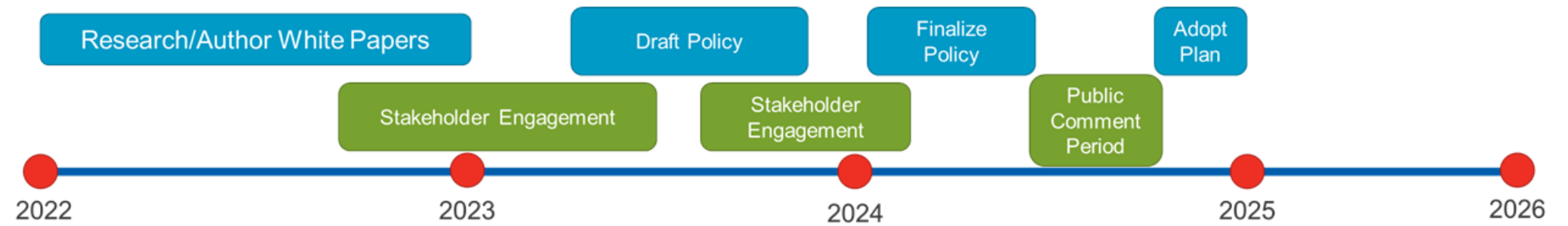
Next Steps



What's to come...



Overall Process Timeline



What's to come...

More White Papers, Meetings, & Feedback

- Mural will remain open until 16 December 2022 if you want to review and provide additional input
- 2023 will be a busy year for the WAG with lots to cover. Is there flexibility in meeting:
 - 3 Hour meeting?
 - More than 3 meetings in the year?
- The Annual Workplan will be updated with relevant information and sent out
- Next WAG meeting will be in February 2023 – watch for the Doodle Poll.
 - We will be reviewing Source Water Protection, Wastewater, and Climate papers

What's to come...



Future Meeting Content & Outreach

- What aspects of Regional Planning would you be interested in, if any?
 - Regional Vision & Values
 - Scenario Planning
 - Land Use Designations
 - Others?
- Suggestions for existing opportunities for WRPP Outreach?
 - Do you know of any larger meetings within your networks that it would make sense for ES to table about the WRPP Update?
 - Email Jen or Shannon with information.
- Website is live and will continue to have additional content – please share with your networks

<https://metrocouncil.org/Wastewater-Water/Planning/2050-Water-Resources-Policy-Plan.aspx>