

Water Resources Policy Plan Advisory Group Meeting #3

WRPP Advisory Group Meeting March 8, 2022



Agenda

- **Welcome and Ice Breaker**
- **Council Updates**
- **Levels of Council Planning**
- **2040 WRPP Policies Feedback**
- **Plus/Delta**
- **Next Steps**

Welcome and Housekeeping Information



Use Both Video and Microphones: When speaking turn on both; turn off when not.
* We know there might be internet problems and we can adjust *

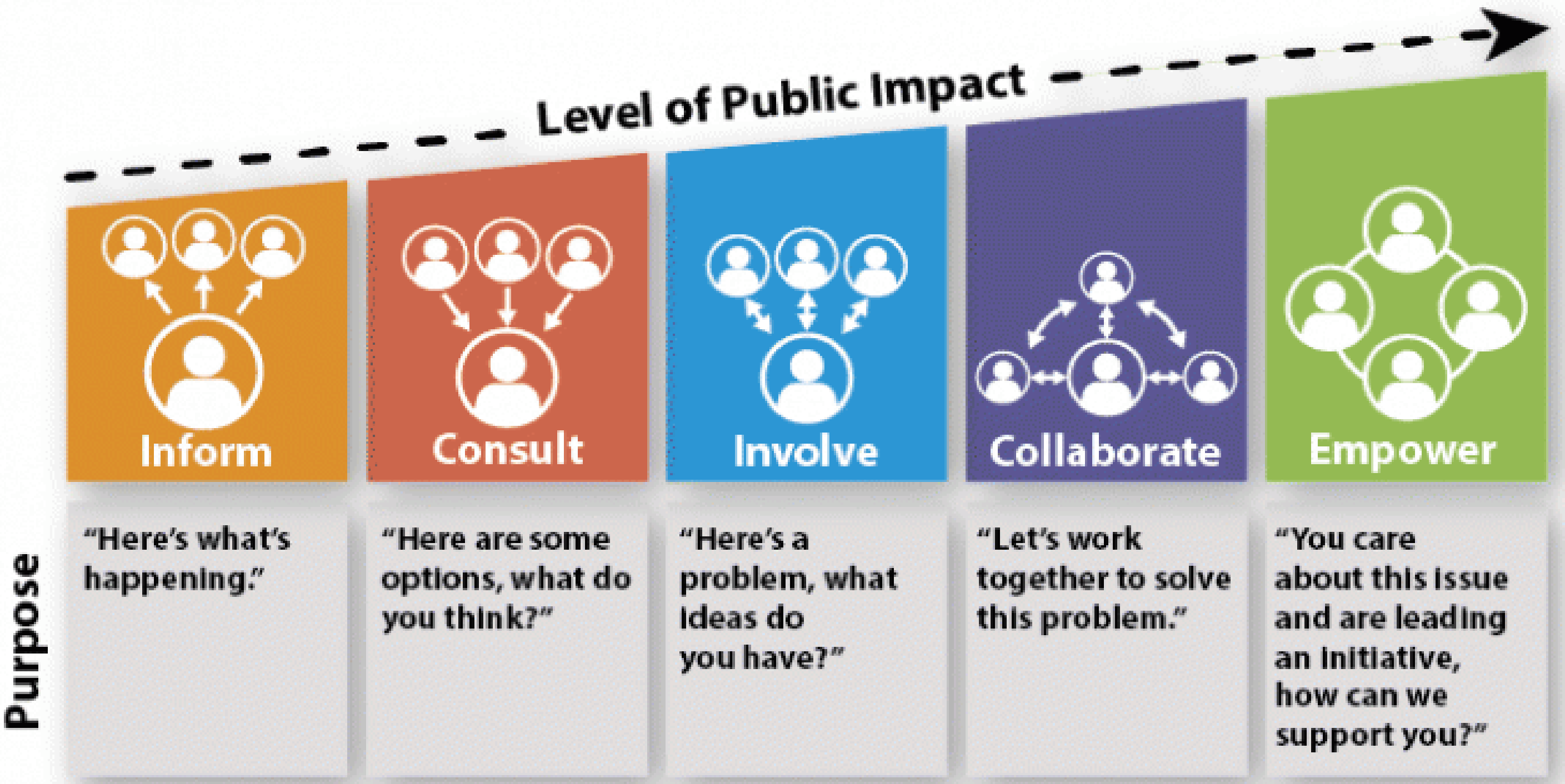
Try to Limit External Distractions: Turn off email & phones. Be here now.
* We know there are always exceptions, please let us know by chat if you step away *



Problems May Occur: It happens... we'll get through this.
* Please email Tessa Wegenke if you can't get back to us *



Levels of Engagement



Adapted from the IAP2 spectrum of public participation

Introductions

When called on, please say your:

- Name
- Organization
- Role
- How you are feeling today using the animal scale →



Council Updates

- **WW Legislative Updates**
 - **Bill Passed & Signed: Council can use revenue to fund I/I work**
 - **Additional Infrastructure funding conversations still ongoing**
- **Climate Resiliency Proposal**
- **MAWSAC/TAC Delivers Report to Legislature**
 - **Report Link:**
<https://metro council.org/Wastewater-Water/Publications-And-Resources/WATER-SUPPLY-PLANNING/REPORTS-TO-THE-LEGISLATURE/2022-MAWSAC-Recommendations-for-Water-Supply-Plann.aspx>

Levels of Council Water Planning

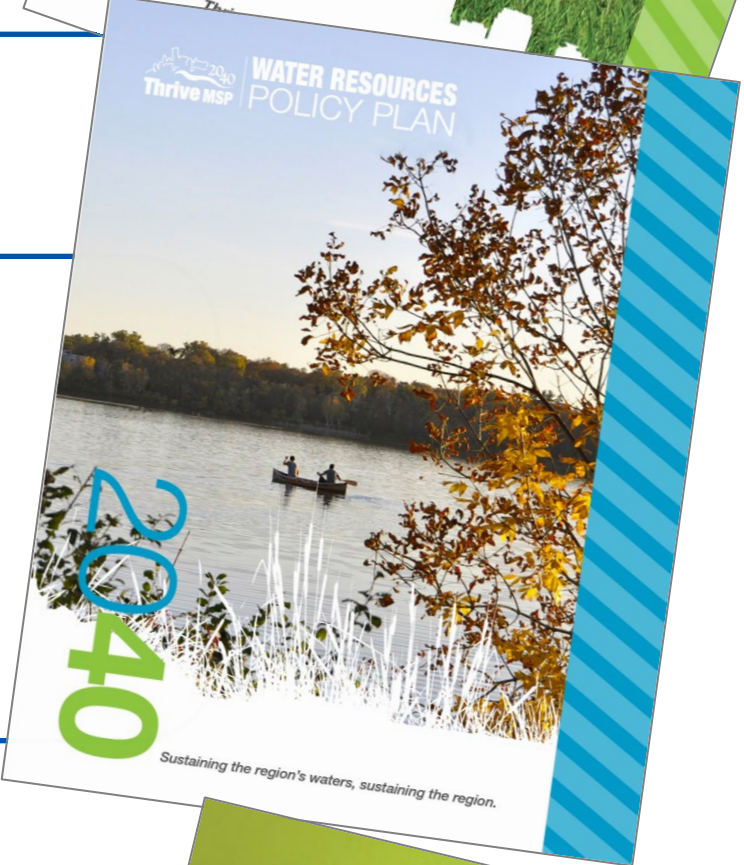
Metropolitan Development Guide

- Regional Vision
- Population Forecasts
- Scenario Exploration
- Regional Outcomes
- Land Use Plan



Water Resources Policy Plan

- Regional, Integrated Water Policies
- Wastewater System Plan
- Local Water Plan Requirements
 - Local Surface Water Management Plan
 - Local Wastewater Plan & Comprehensive Sewer Plan
 - Local Water Supply Plan



Master Water Supply Plan

- Community Water Supply Profiles
- Technical and Collaborative Guidance for Suppliers
- Subregional Priorities for Regional Water Supply Planning



Current Planning Framework



2050 Water Resource Policy Plan Draft Content



2040 WRPP Policies

Water Resources

The Watershed Approach

The Council will work with our partners to develop and implement a regional watershed-based approach that addresses both watershed restoration and protection.

Water Resources

Assessing & Protecting Water Resources

The Council will continue to assess the condition of the region's lakes, rivers, streams, and aquifers to evaluate impacts on regional water resources and measure success in achieving regional water goals.

2040 WRPP Policies

Water Supply

Sustainable Water Supplies

While recognizing local control and responsibility for owning, operating, and maintaining water supply systems, the Council will work with our partners to develop plans that meet regional needs for a reliable water supply that protects public health, critical habitat and water resources over the long-term.

2040 WRPP Policies

Wastewater

Wastewater Sustainability Policy

The Council will provide efficient, high-quality, and environmentally sustainable regional wastewater infrastructure and services.

The Council shall conduct its regional wastewater system operations in a sustainable manner as is economically feasible.

Wastewater

Inflow and Infiltration Policy

The Council will not provide additional capacity within its interceptor system to serve excessive inflow and infiltration.

The Council will establish I/I goals for all communities discharging wastewater to the regional wastewater system. Communities that have excessive I/I in their sanitary sewer systems will be required to eliminate the excessive I/I within a reasonable time period.

2040 WRPP Policies

Wastewater

Wastewater System Finance Policy

The Council will continue to implement regional wastewater service fees and charges based on regional cost of services and rules adopted by the Council.

Wastewater

Private Wastewater Systems

Communities that permit the construction and operation of subsurface sewage treatment systems and other private wastewater treatment systems within their communities are responsible for ensuring that these systems are installed, maintained, managed, and regulated consistent with MPCA rules. The Council will not provide financial support to assist communities if these systems fail.

2040 WRPP Policies

All Water

Serving the Rural Area

The Council will acquire wastewater treatment plants owned by Rural Centers, based upon their request through the comprehensive plan and comprehensive sewer plan processes, and based upon criteria that ensure direct identifiable regional benefits, after soliciting customer input and conducting a public hearing on the request.

All Water

Serving the Urban Area

The Council will plan for sustainable water resources that protect public health, provide recreational opportunities, maintain habitat and ecosystem health, and ensure that supplies of potable water are sufficient for the orderly and economical development and redevelopment of the metro area long into the future.

2040 WRPP Policies

All Water

Investment Policy (Amended)

The Council will strive to maximize regional benefits from regional investments.

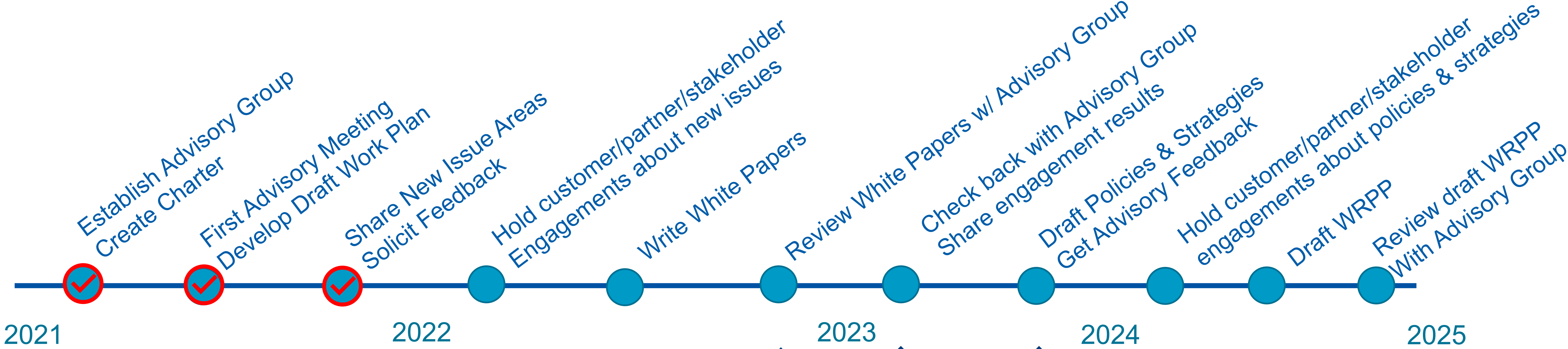
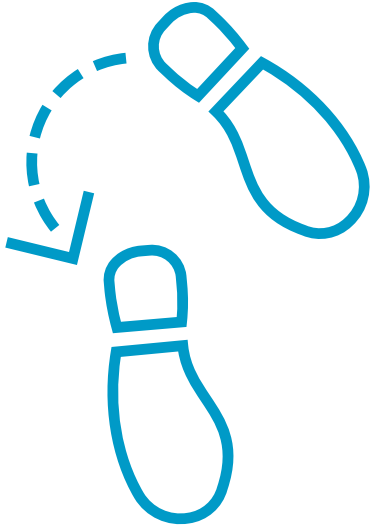
All Water

Water Conservation and Reuse (Amended)

The Council will work with our partners to identify emerging issues and challenges for the region as we work together on solutions that include the use of water conservation, wastewater, stormwater reuse, and low-impact development practices in order to promote a more sustainable region.

Mural Exercise

Next Steps: Process Timeline



Next Steps

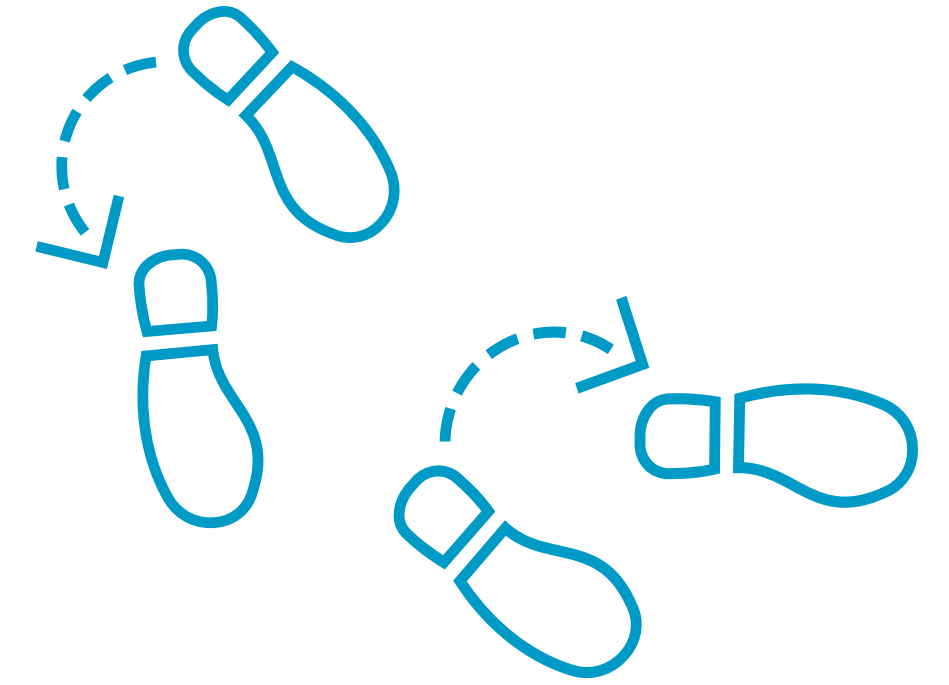
White Paper Research & Writing

- 1st Round of White Papers
 - Water Quality
 - Wastewater Concerns
 - Water + Climate
- 2nd Round of White Papers
 - Source Water Protection & Vulnerable Areas
 - Rural Concerns
- 3rd Round of White Papers
 - Water Availability, Access, Use
 - Water Reuse

March -
May

May-
July

July-
Sept



METROPOLITAN
COUNCIL

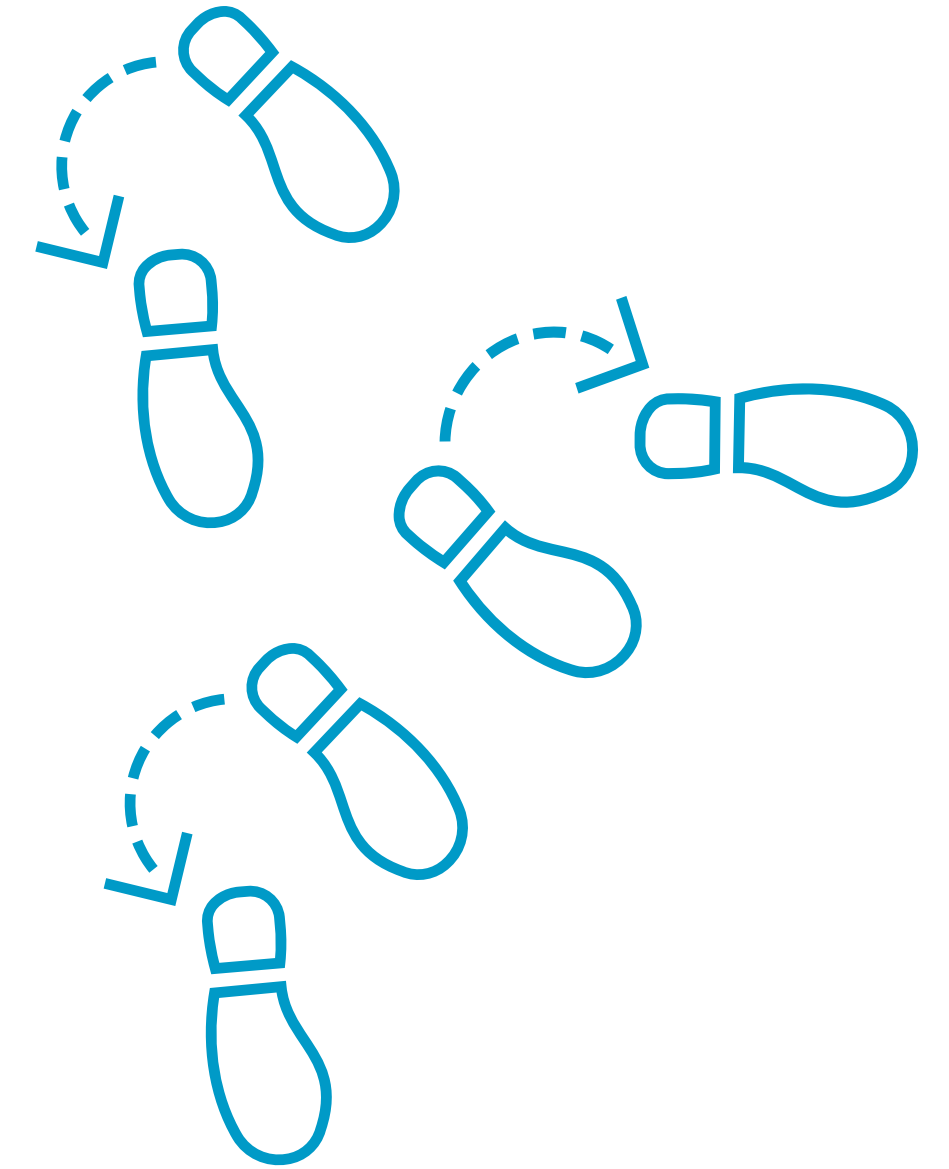
Next Steps

Council Staff

- Start working on White Papers for new issue areas
 - Water Quality
 - Wastewater Concerns
 - Water + Climate
- Send out meeting minutes from this meeting
- Send out a meeting poll and/or meeting invite for next meeting
- Send out materials before next meeting for Members to review

Members

- Contact us if you think of any additional input about the WRPP content
- Review materials before next meeting



Contacts

Judy Sventek

Water Resources Manager

Judy.Sventek@metc.state.mn.us

651-602-1156

Kyle Colvin

Wastewater Planning and Community Programs Manager

Kyle.Colvin@metc.state.mn.us

651-602-1151

Jen Kostrzewski

Environmental Planning Analyst

Jen.Kostrzewski@metc.state.mn.us

651-602-1078



Resources

See the full report and other committee work on MAWSAC's webpage:

- <https://metro council.org/Council-Meetings/Committees/Water-Supply-Advisory-Committee.aspx>

Learn more about the Council's water supply planning work on the Water Supply Planning webpage:

- <https://metro council.org/Wastewater-Water/Planning/Water-Supply-Planning.aspx>

