



Water Resources Policy Plan Advisory Group

Meeting #4



January 30, 2023

Agenda

- **Welcome and Introductions**
- **Let's Fill Out a Survey!**
- **Water Quality White Paper Discussion**
- **Protecting Source Waters White Paper Discussion**
- **Next Steps**
- **Plus/Delta**



**If you don't know where you are going,
you might end up someplace else.**

~ Yogi Berra

Welcome!

Housekeeping Information

Use Both Video and Microphones: When speaking turn on both; turn off mic when not.

* We know there might be internet problems and we can adjust *

Try to Limit External Distractions: Turn off email & phones. Be here now.

* We know there are always exceptions, please let us know by chat if you step away *

Problems May Occur: It happens... we'll get through this.

* Please email Shannon Skally (shannon.skally@metc.state.mn.us) if you can't get back to us *



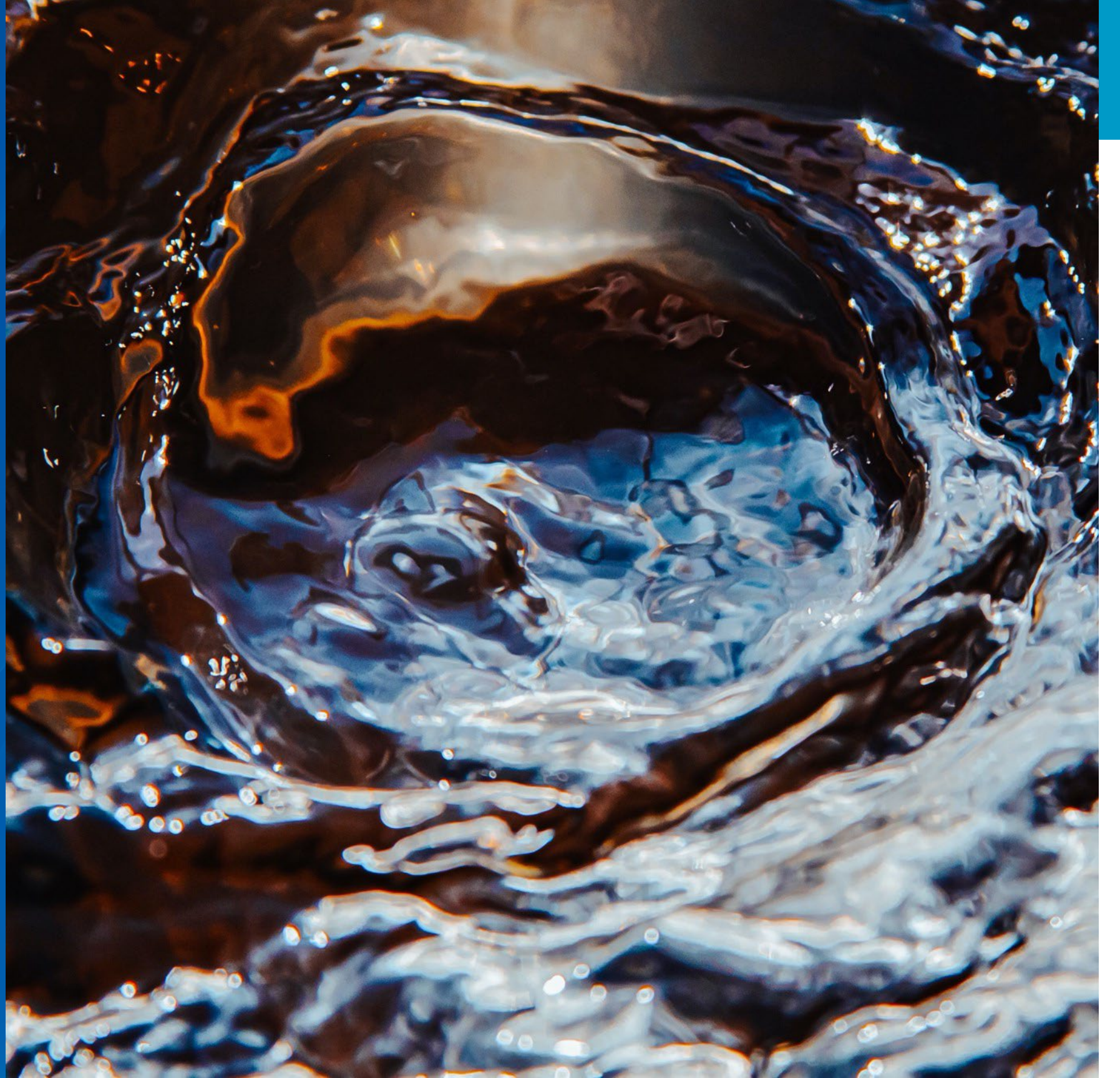
Introductions

When called on, please say your:

- **Name**
- **Title**
- **Organization**



Water Quality White Paper Discussion



Water Quality



Paper Contents:

- Introduction
- Issue Statement
- Our Role
- Primary Drivers
- Contaminants of Concern
- Connections to Current Policy
- Policy/Action Recommendations
- Next Steps

Water Quality



Issue Statement

Water quality contamination and its consequences impacts public health, ecosystem function, and affects regional economic competitiveness.

The metro region is experiencing increased pollutant-loaded runoff, a growing list of water impairments, contaminated drinking water supplies, and high utility treatment costs.

Uncertainty around emerging contaminants, regulatory changes, and climate change intensifies these issues and complicates how to address water contamination.

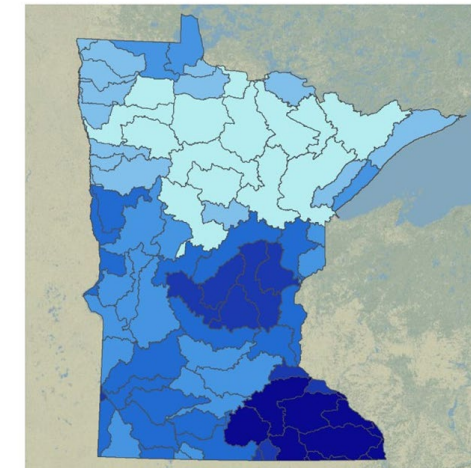
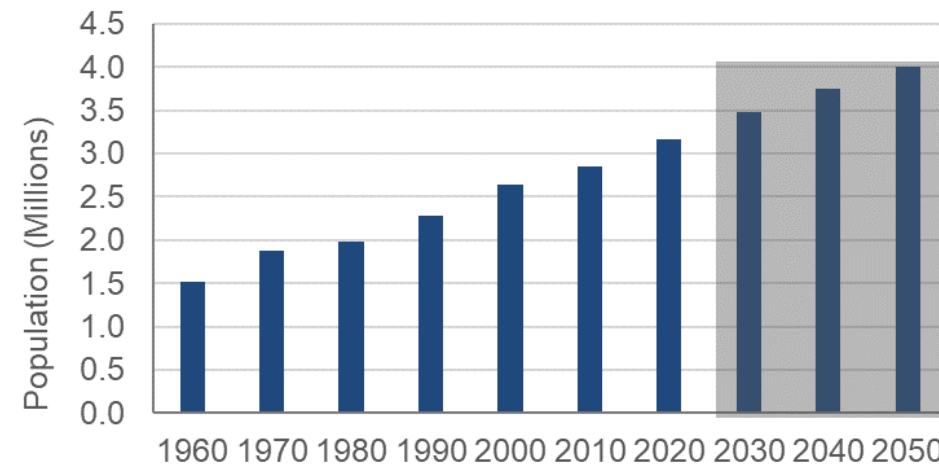
Strong regional water policies are necessary to restore and protect the quality of our waters and to ensure their resiliency to known and future contamination threats.

Water Quality

Primary Drivers

- Population Growth
- Land Use Change
- Climate Change
- Regulation
- Costs/ Benefits
- Emerging Concerns

Seven-County Metro Area Population
(2030-2050 forecasted values)

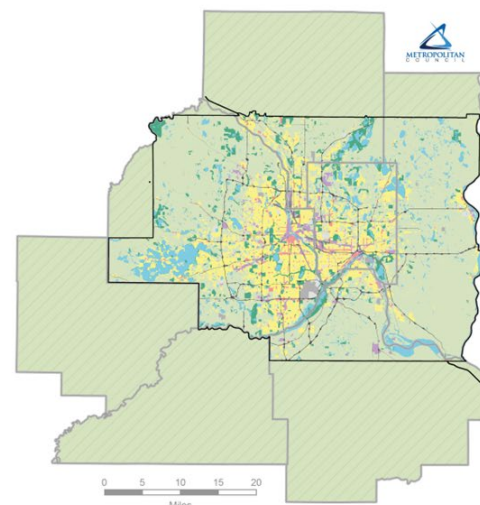


Annual precipitation change
2000-2019

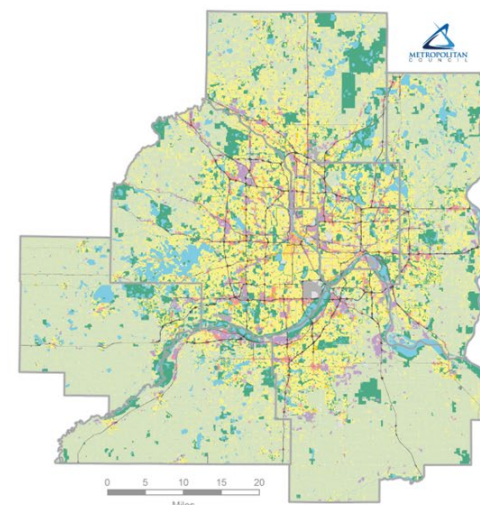
Annual precipitation change by watershed for 2000-2019, compared to 20th century averages. Minnesota is getting wetter, especially the southern parts of the state.

- 0 - 1 in. Difference from the 20th century
- 1 - 2 in.
- 2 - 3 in.
- 3 - 4 in.
- 4 - 5 in.
- 5 - 6 in.

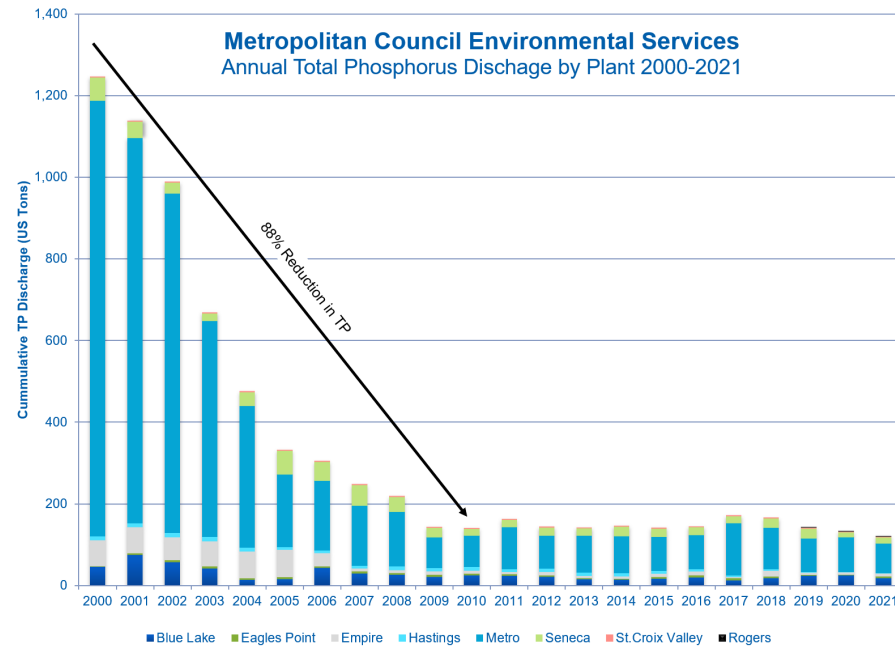
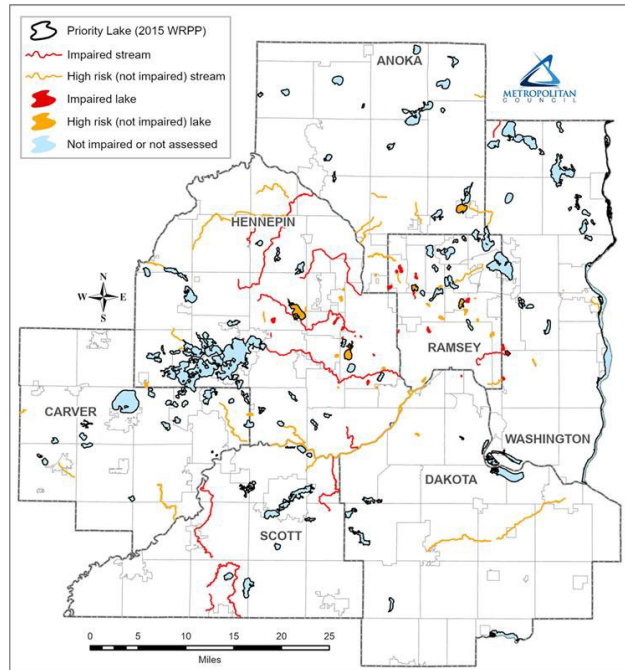
Metro Area Land Use 1968



Metro Area Land Use 2020

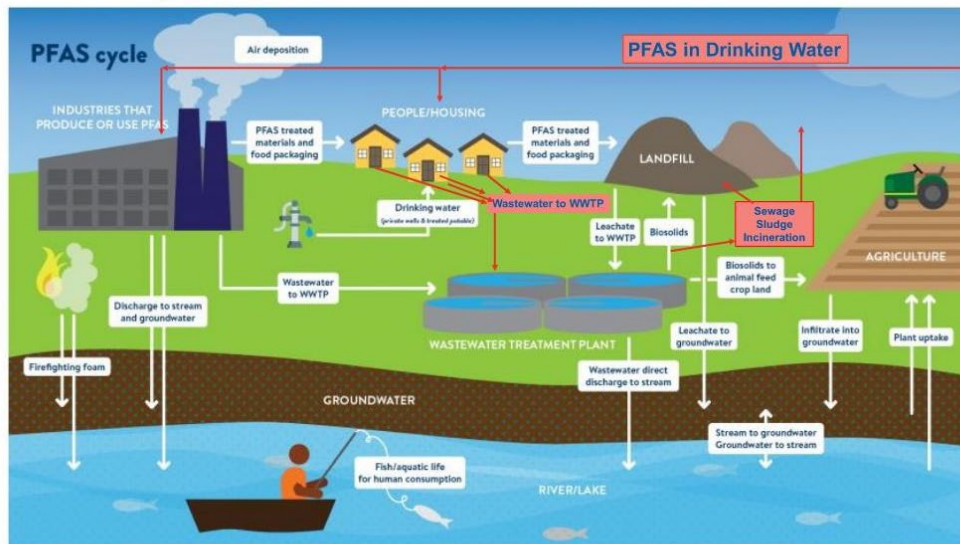


Water Quality

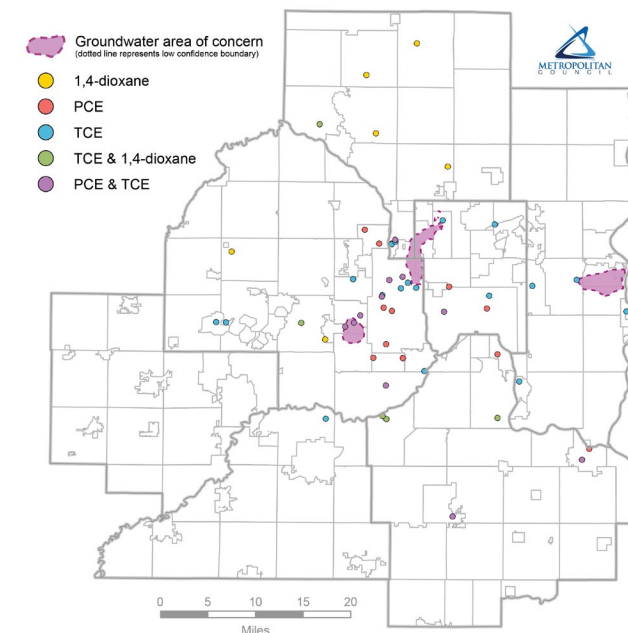
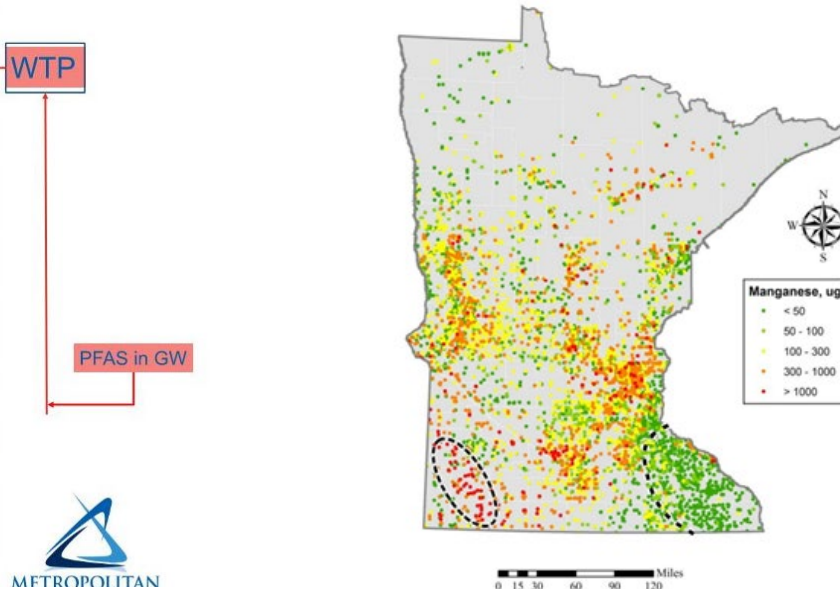


Contaminants of Concern

- Chloride
- Nutrients
- PFAS
- Manganese & Volatile Organic Compounds



Original image from MPCA, adapted by Environmental Services PFAS Team



Let's head into Mural

Brainstorm



Action Items



[Click Here!](#)

BREAK!



Protecting Source Water Areas White Paper Discussion



Protecting Source Water Areas



Paper Contents

- Introduction
- Issue Statement
- Our Role
- Crucial Concerns
- Connections to Current Policy
- Draft Policy Proposals and Implementation Strategies
- Next Steps
- Supporting Figures and Maps

Protecting Source Water Areas



Issue Statement

To ensure safe, sustainable, and sufficient drinking water for the region:

Public water suppliers, land use planners and developers, watershed organizations, business owners/managers, residents, and others...

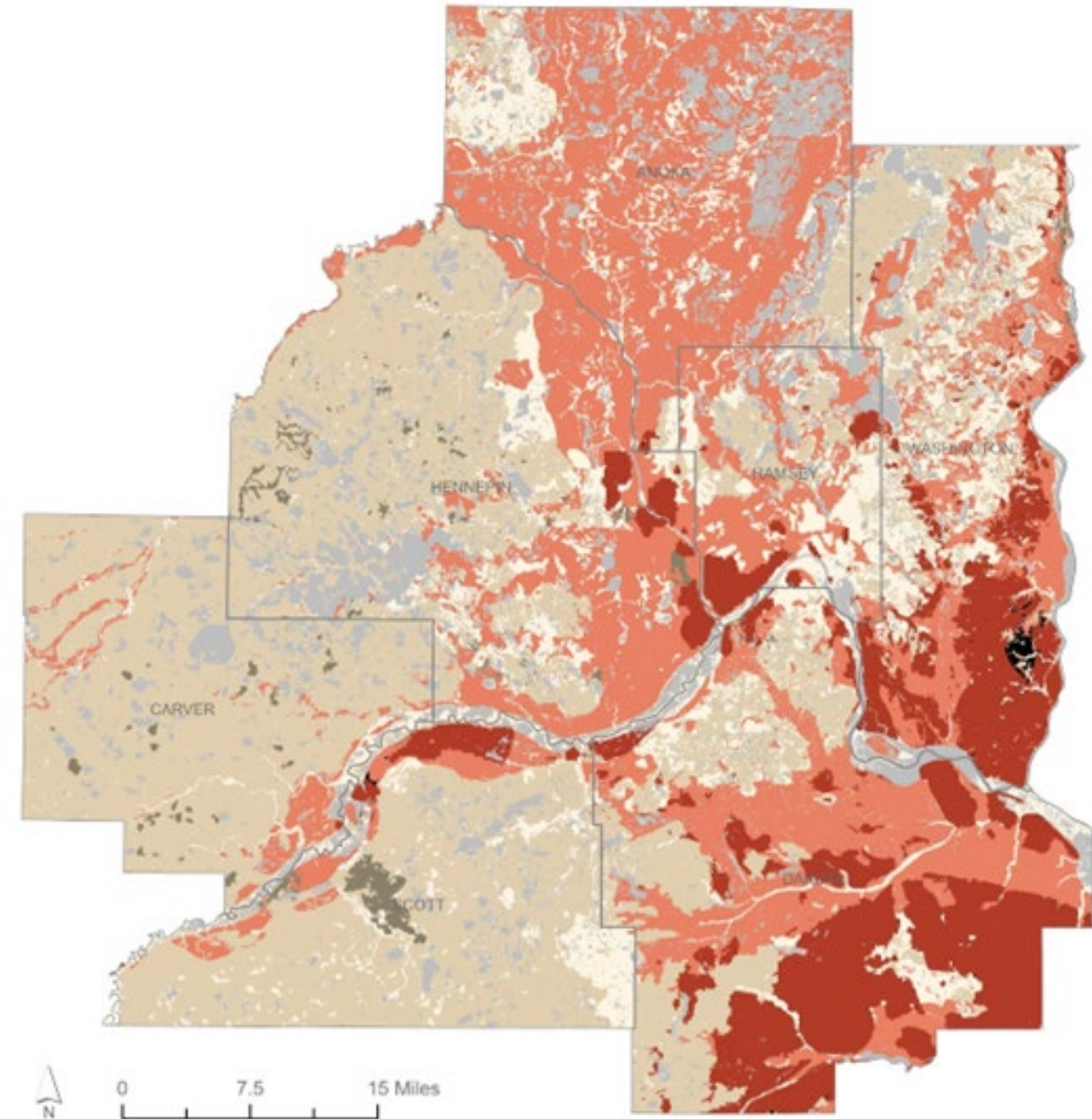
...need to improve understanding and collaboration to protect the land areas that are the sources for the region's water supply.

This is particularly important where source water protection areas extend beyond any one jurisdiction's boundaries.

Protecting Source Water Areas

Primary Drivers

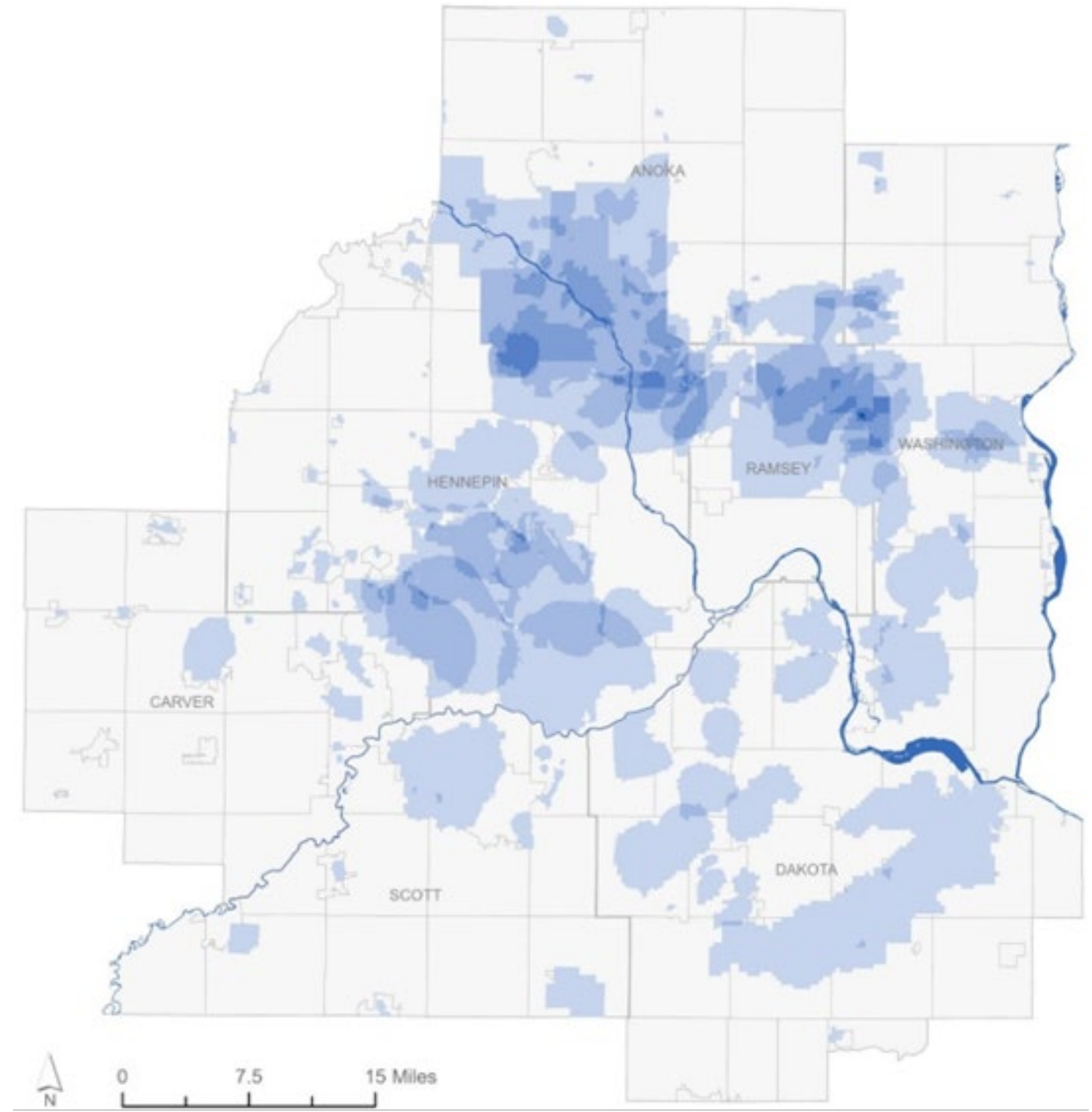
1. Current and future climate
2. Sensitivity of near-surface sediments and underlying bedrock to potential contamination
3. Land cover and land use
4. Federal and state programs



Protecting Source Water Areas

Crucial Concerns

1. Land management and source water protection implementation
2. Source water contamination
3. Costs and benefits of source water protection



Let's head back into Mural

Brainstorm



Action Items



M U R A L

[Click Here!](#)

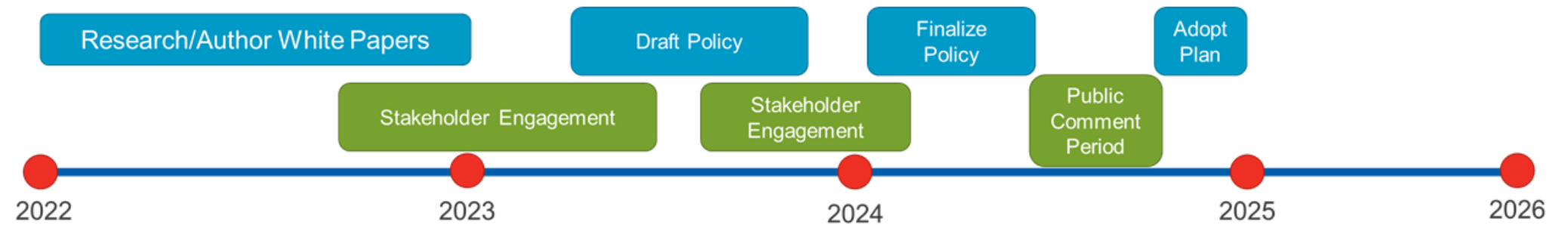
Next Steps



What's to come...



Overall Process Timeline



What's to come...

More White Papers, Meetings, & Feedback

- Mural will remain open until February 17, 2023 if you want to review and provide additional input
- The Annual Workplan will be updated with relevant information and sent out
- Next WAG meeting will be March 21, 2023.
 - We will be reviewing Wastewater and Climate papers

What's to come...



Future Meeting Content & Outreach

- Suggestions for existing opportunities for WRPP Outreach?
 - Do you know of any larger meetings within your networks that it would make sense for ES to table about the WRPP Update?
 - Email with information to Jen (jennifer.kostrzewski@metc.state.mn.us) or Shannon Skally (shannon.skally@metc.state.mn.us)
- Website is live and will continue to have additional content – please share with your networks

<https://metro council.org/Wastewater-Water/Planning/2050-Water-Resources-Policy-Plan.aspx>