



Water Resources Policy Plan Advisory Group

Meeting #6



June 5, 2023

Agenda

- **Welcome and Introductions**
- **Rural Water Issues Research Paper Discussion**
- **Water Availability, Access, and Use Research Paper Discussion**
- **Next Steps**
- **Plus/Delta**



**If you don't know where you are going,
you might end up someplace else.**

~ Yogi Berra

Welcome!

Housekeeping Information

Use Both Video and Microphones: When speaking turn on both; turn off mic when not.

* We know there might be internet problems and we can adjust *

Try to Limit External Distractions: Turn off email & phones. Be here now.

* We know there are always exceptions, please let us know by chat if you step away *

Problems May Occur: It happens... we'll get through this.

* Please email Shannon Skally (shannon.skally@metc.state.mn.us) if you can't get back to us *



Introductions

When called on, please say your:

- **Name**
- **Title**
- **Organization**



Updates and Announcements

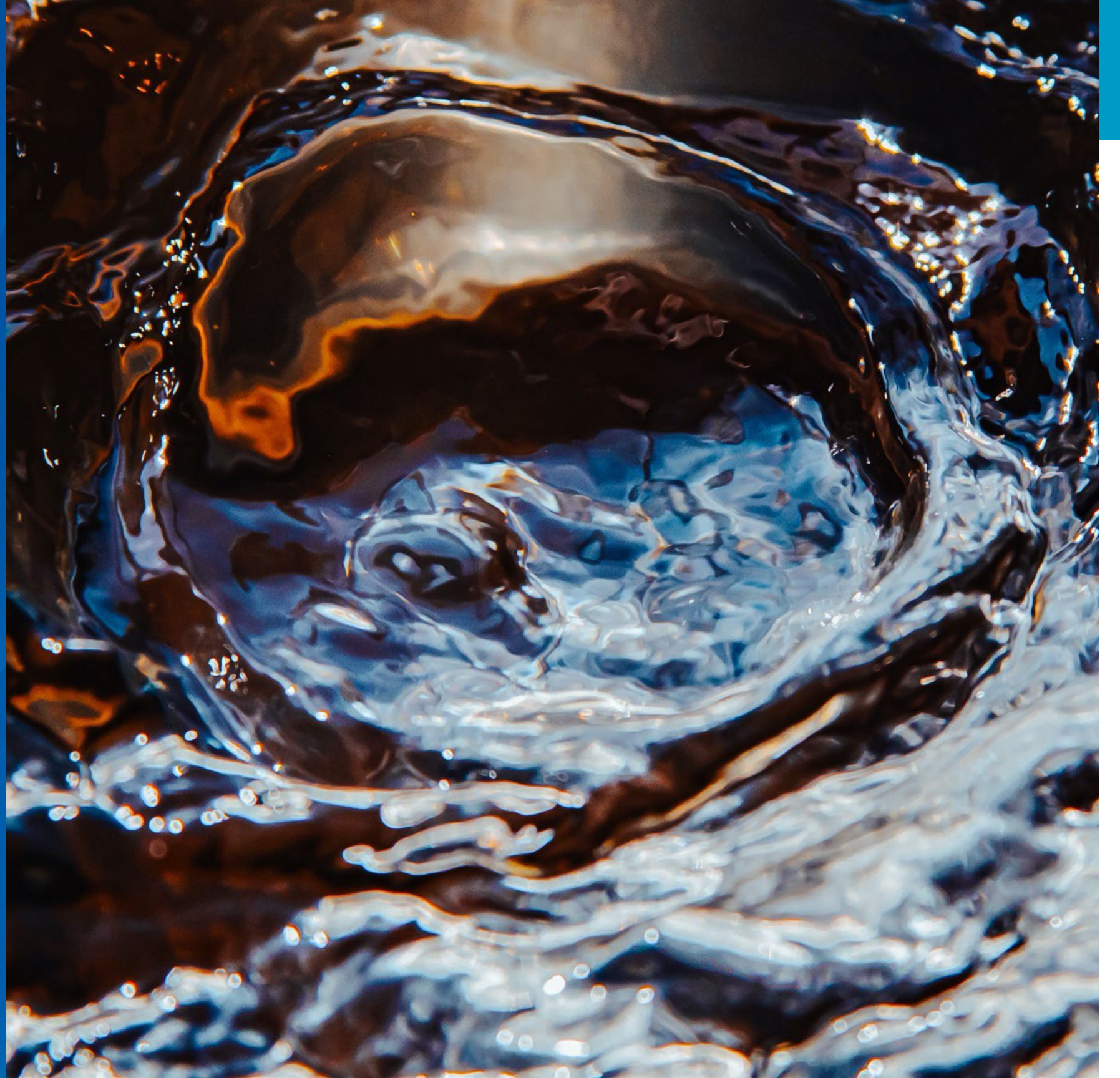


Water Supply Planning Subregional Groups

Climate Planning Inclusion for Comp Planning

Legislative Updates

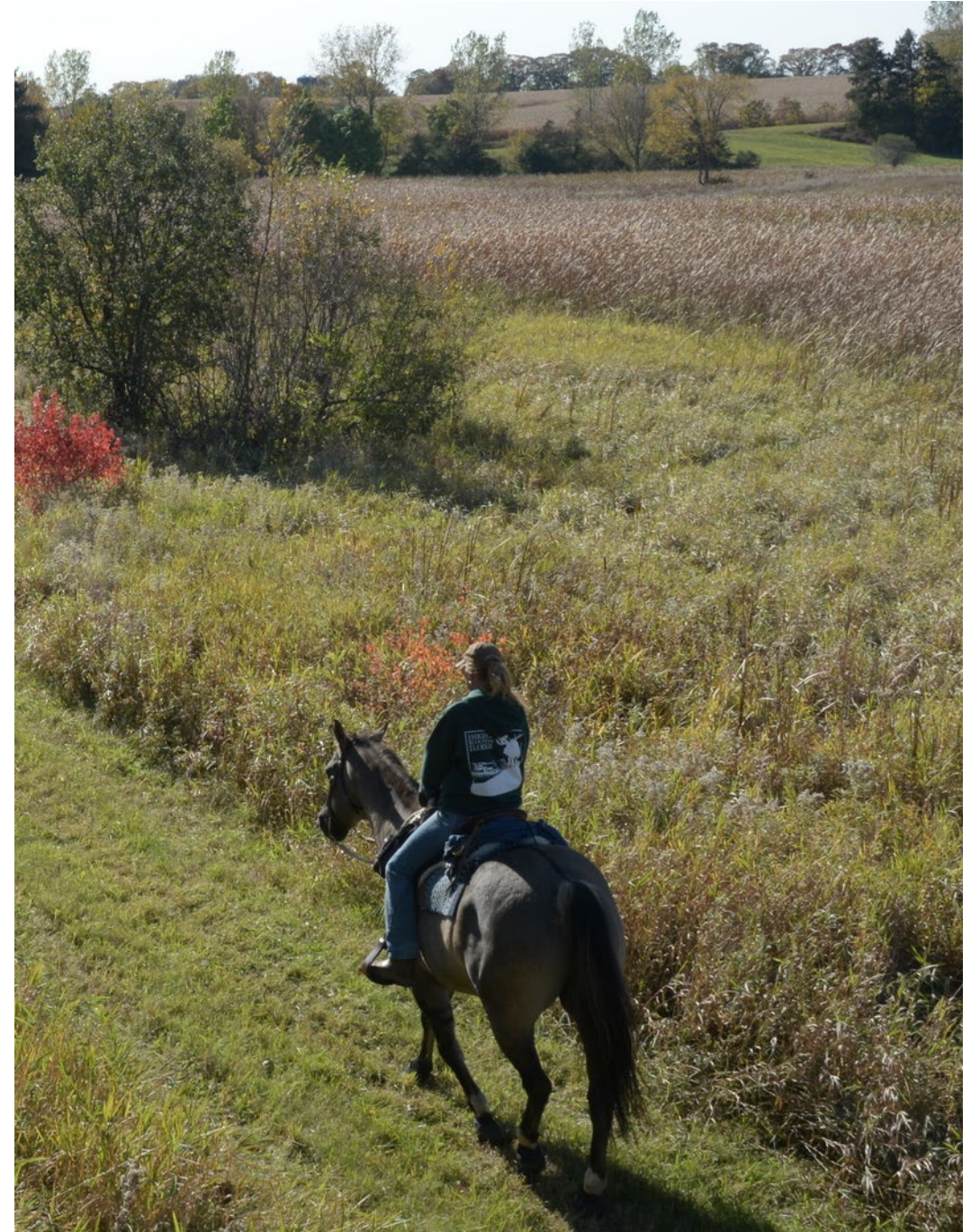
Rural Water Issues Research Paper Discussion



Rural Water Issues

Paper Contents:

- Introduction
- Issue Statement
- Our Role
- Primary Drivers
- Key Concerns
- Equity Considerations
- Connections to Current Policy
- Policy/Action Recommendations
- Next Steps



Rural Water Issues



Issue Statement

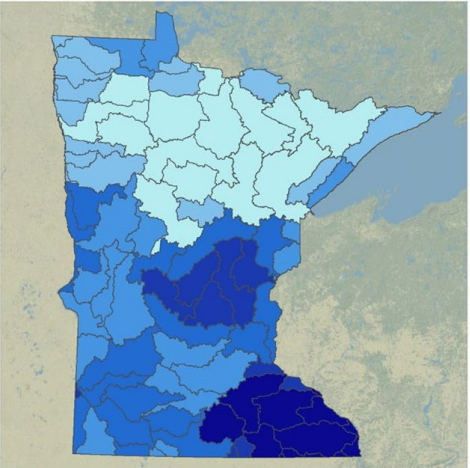
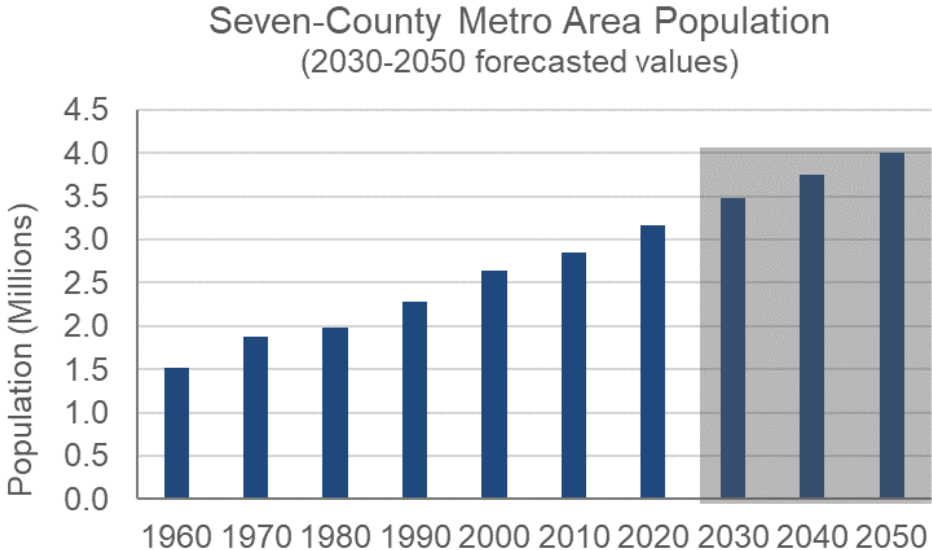
Rural lifestyles and high-quality natural resources provide critical benefits to the region's economy. Rural and agricultural areas account for about half of the region's land but represent a much smaller proportion of the population. Our region benefits from a diversity of natural resources, communities, land uses, and economies. As the region grows and climate shifts in the coming decades, rural areas are likely to experience significant changes.

Long-term development, land use change, and limited funding to address aging infrastructure pose substantial threats to water resources and ecosystems in rural and downstream areas. To plan for a sustainable and vibrant future, the Met Council must establish adaptive, forward-looking policies that support rural livelihoods, protect and enrich our region's waters, and promote equitable outcomes for current and future generations.

Rural Water Issues

Primary Drivers

- Climate Change
- Population Growth
- Land Use Change

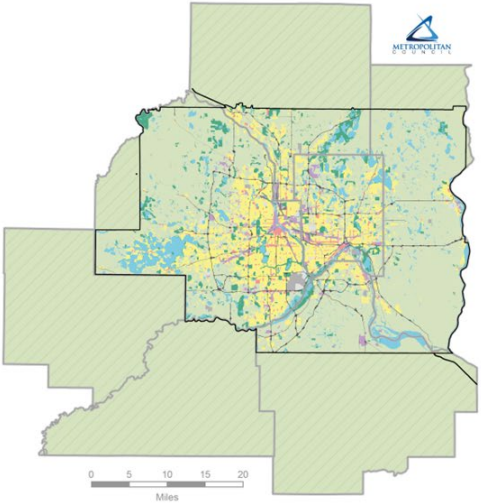


Annual precipitation change 2000-2019

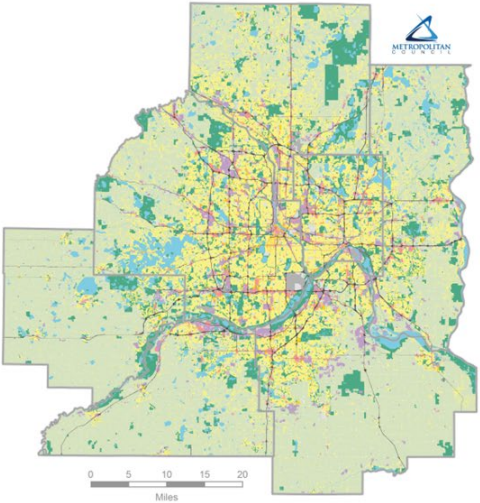
Annual precipitation change by watershed for 2000-2019, compared to 20th century averages. Minnesota is getting wetter, especially the southern parts of the state.

- 0 - 1 in. Difference from the 20th century
- 1 - 2 in.
- 2 - 3 in.
- 3 - 4 in.
- 4 - 5 in.
- 5 - 6 in.

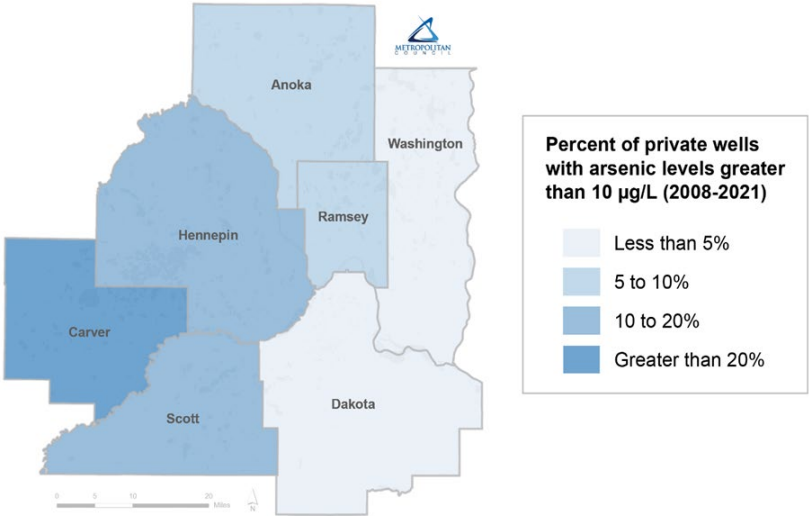
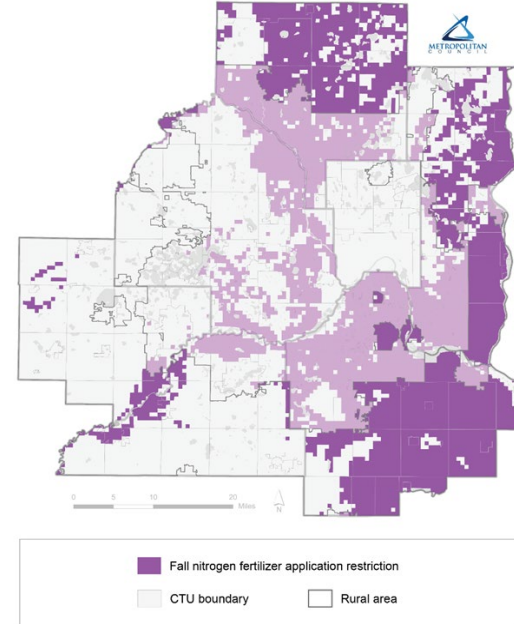
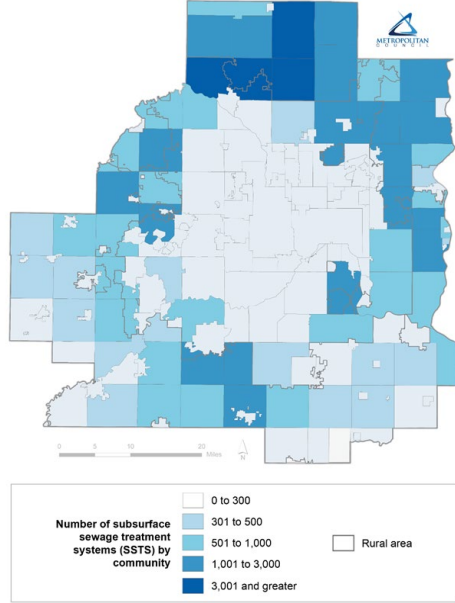
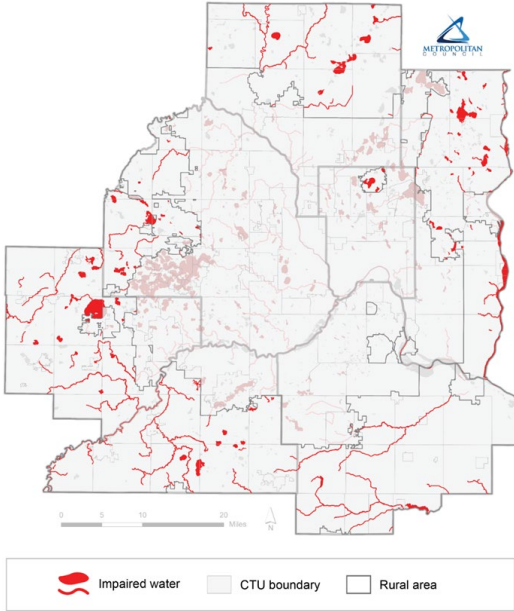
Metro Area Land Use 1968



Metro Area Land Use 2020



Rural Water Issues



Key Concerns

Water Quality

Wastewater

Community Water Supply
and Private Wells

Key Messages


- Rural water issues are complex. Climate change, infrastructure, land use, and land use changes all impact water quantity and quality.
- Rural areas are important for natural resource protection and groundwater recharge for drinking water wells. If rural lands are not managed and planned for properly, rural land uses, development, and agricultural practices can negatively impact waterbodies and drinking water sources.
- Protecting our rural lands and understanding rural water concerns are crucial for achieving sustainable water resources within the metro region. Improved and expanded collaboration between partners is critical for success, and a current gap for the Met Council.

Let's head into Mural

Brainstorm



Action Items



M U R A L

[Click Here!](#)

BREAK!



Water Availability, Access, and Use Research Paper Discussion

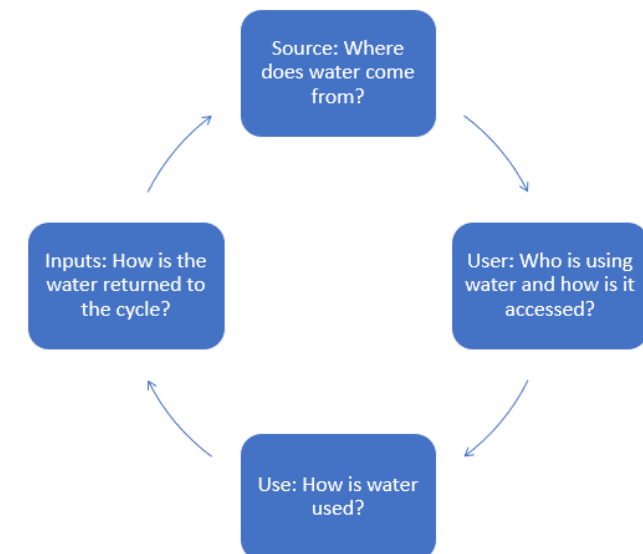


Water Availability, Access, & Use



Paper Contents

- Introduction - Source, Users, Use, Input Feedback Cycle
- Issue Statement
- Our Role
- Crucial Concerns
- Connections to Current Policy
- Draft Policy Proposals and Implementation Strategies
- Next Steps



Water Availability, Access, & Use



Issue Statement

The availability of consistent clean water is crucial to the future of the metro region. Water availability, access, and use are affected by changing and variable sources of water; varying types and quantity of users; shifting user needs; and the methods by which water is returned to the source. Our goal is to improve, support, protect, and enhance access and availability of water for our ecosystems, residents, and business and industrial needs within the region.

The Met Council needs a more comprehensive assessment and water balance of the regional water cycle to better identify water needs and to work with partners to balance those needs to ensure water access and availability.

Water Availability, Access, & Use

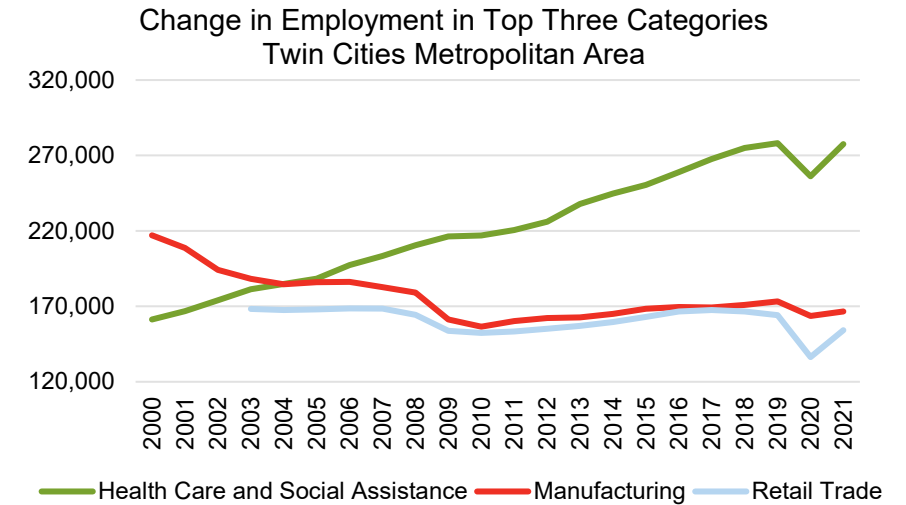
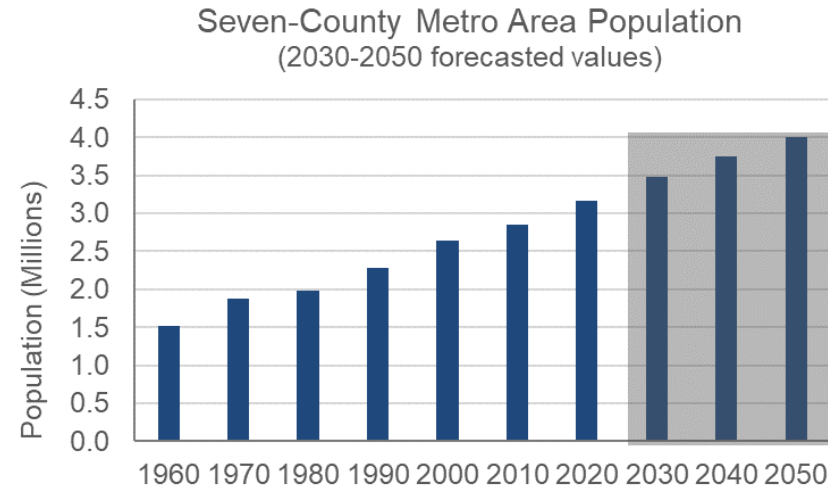
Primary Drivers

Population and Employment Growth

Land Use Change

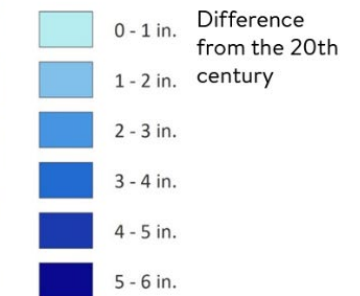
Current and Future Climate

Current Water Restrictions



Annual precipitation change 2000-2019

Annual precipitation change by watershed for 2000-2019, compared to 20th century averages. Minnesota is getting wetter, especially the southern parts of the state.



Water Availability, Access, & Use

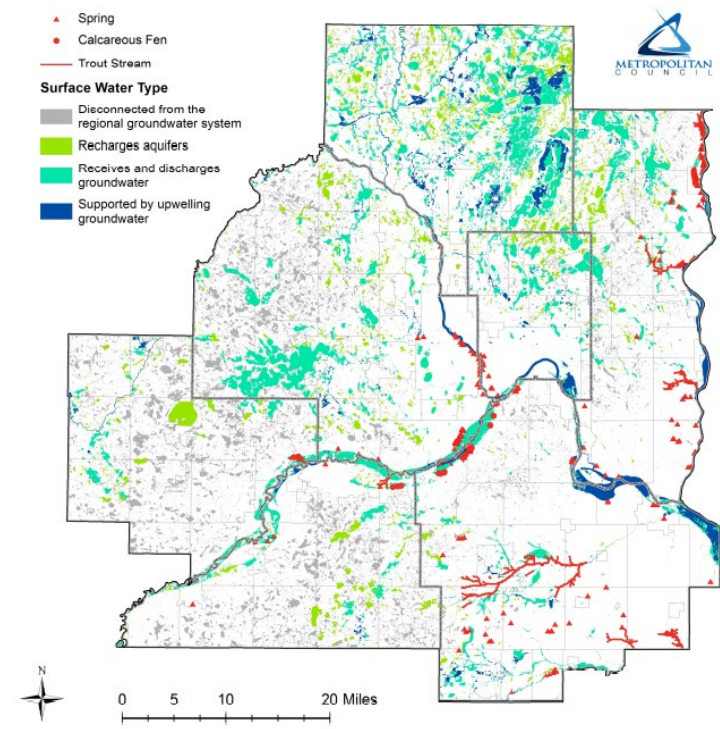
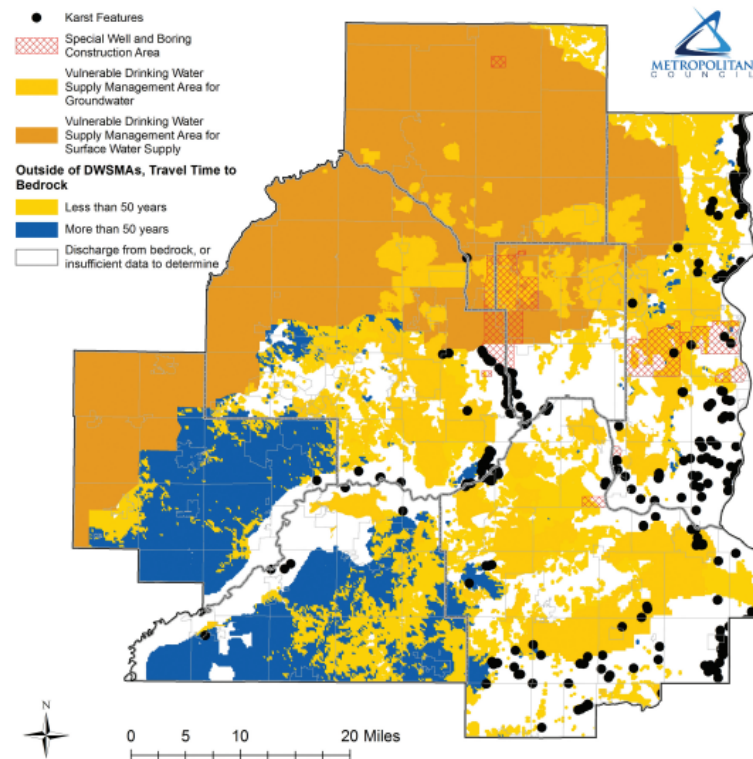
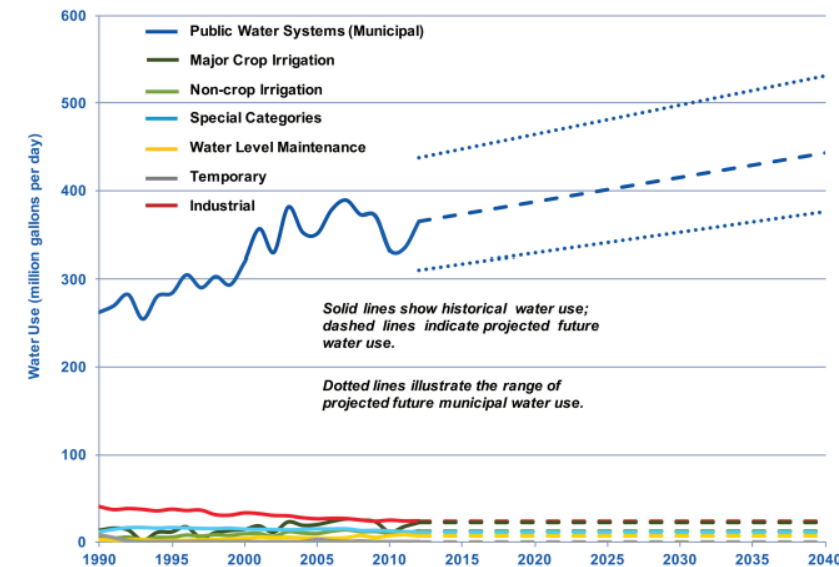
Crucial Concerns

Increasing water demand pressures

Threats to groundwater-dependent water resources

Growing water contamination

Aging Infrastructure



Key Messages



- Sustainable water resources is derived from the combination of availability, accessibility, and use of water.
- Viewing water sources, users, uses, and inputs is a simple, holistic framework to encapsulate the region's complex water needs.
- We must keep in mind the impacts and our responses to natural limitations, social and economical constraints, and regulatory decisions (among others) in our efforts to retain sustainable waters.
- Integrated water planning and cross-sector collaboration is vital to our desired outcome of sustainable water.


Let's head into Mural

Brainstorm



A 2x4 grid of light blue sticky notes. The top row contains four notes with horizontal lines. The bottom row contains three notes with horizontal lines. The first note in the bottom row is circled in red.

Action Items



A 2x4 grid of yellow sticky notes. The top row contains four notes with horizontal lines. The bottom row contains three notes with horizontal lines. The first note in the bottom row is underlined in red.



M U R A L

[Click Here!](#)

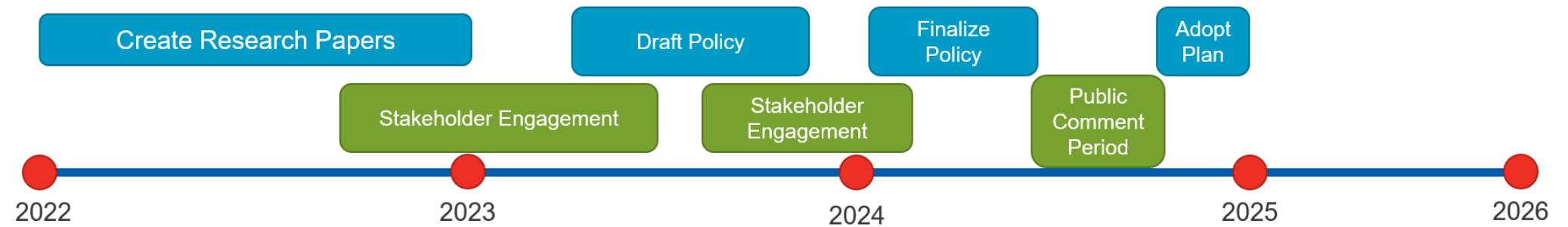
Next Steps



What's to come...



Overall Process Timeline



What's to come...

Research Paper Outreach & Feedback

- Mural will remain open until June 20, 2023, if you want to review and provide additional input
- Council staff will be doing external engagements throughout the summer to discuss research paper issues and recommendations.
- Next WAG meeting will be in the fall. We will start sharing the draft policy language and plan design!
- Enjoy your summer!

What's to come...



Future Meeting Content & Outreach

- Suggestions for existing opportunities for WRPP Outreach?
 - Do you know of any larger meetings within your networks that it would make sense for ES to table about the WRPP Update?
 - Email with information to Jen (jennifer.kostrzewski@metc.state.mn.us) or Shannon Skally (shannon.skally@metc.state.mn.us)
- Website is live and will continue to have additional content – please share with your networks

<https://metro council.org/Wastewater-Water/Planning/2050-Water-Resources-Policy-Plan.aspx>