



Water Advisory Group

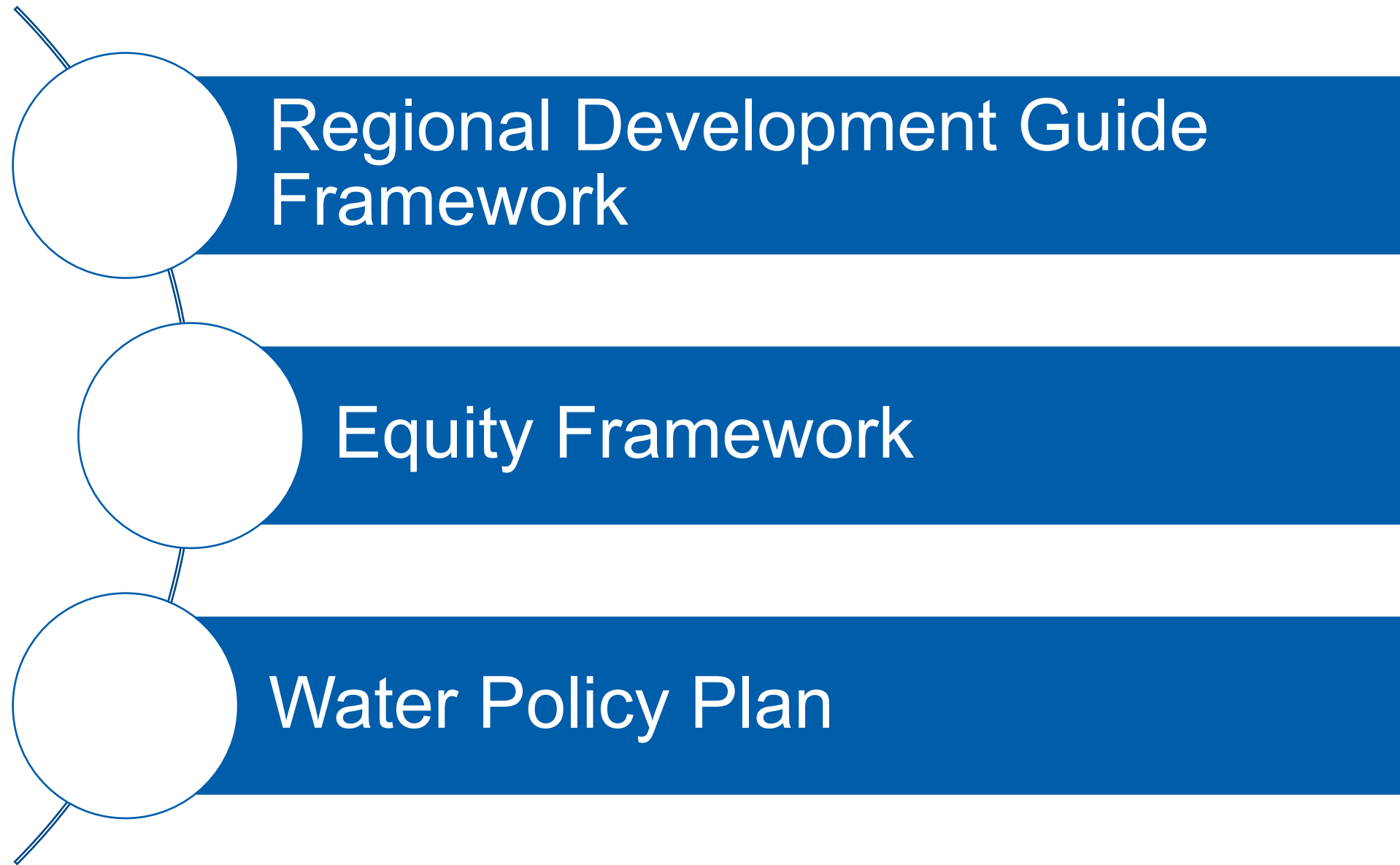
Regional Development Guide and Water Policy Plan Content



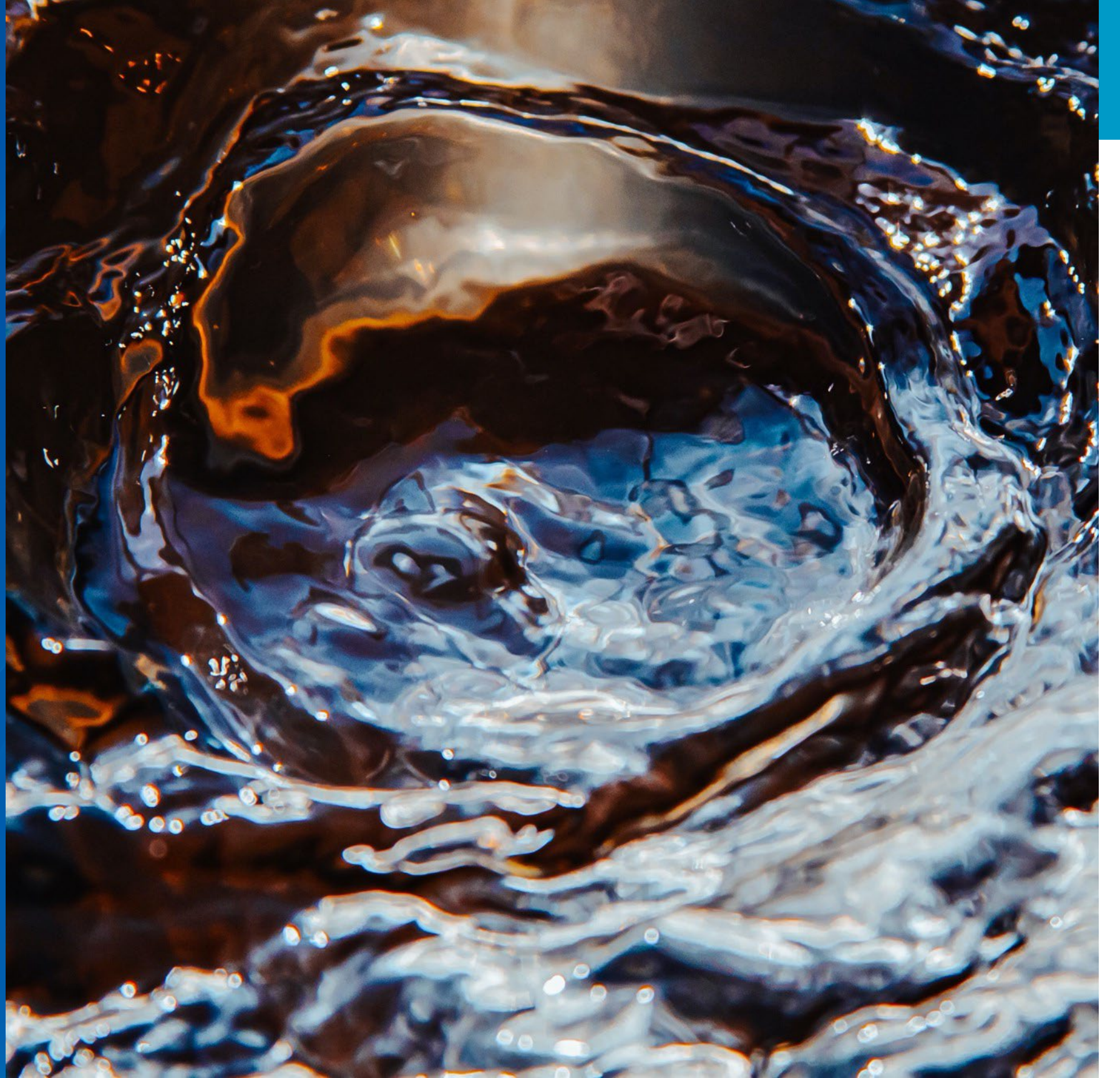
November 6, 2023

Jen Kostrzewski

Presentation overview



Imagine 2050



Water objectives and policies advance regional values, vision, and goals

Values

Values are core beliefs or principals that guide the work of the Council, our expectations of partnerships, and our policy and program development.

Vision

Our vision is what we want to achieve for the region through our policies, practices, programs, and partnerships.

Regional goals

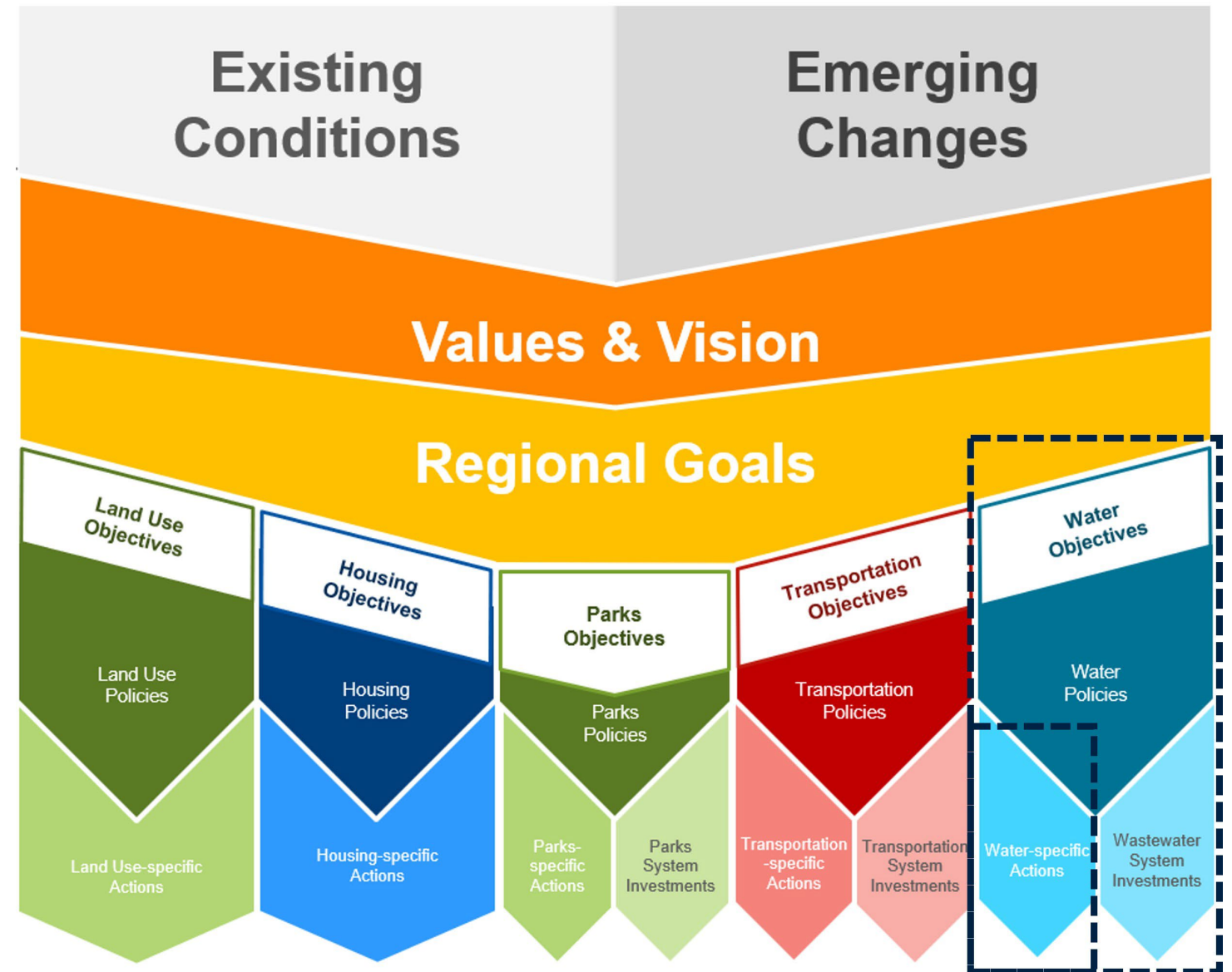
Our goals express desired end states for the region.

Objectives

Our objectives articulate achievable results for each of the Council's policy and system plan areas, to advance regional goals and achieve our vision.

Policies

Policies set the intent and approach to regional issues; they clarify expectations for both Council and partners.



Regional values



Equity

We value the people and communities of our region. Our region is economically and culturally vibrant. We also recognize, however, the harm and disparities that injustices, including racism, have created.



Leadership

We value those in our region who inspire and motivate others for positive change. Our region is known for its civic engagement. We need broad and inclusive leadership to help confront the significant challenges we face around equity, climate change, safety, and other pressing issues.

To maximize the potential of our region and its communities, we turn to leadership that is diverse, collaborative, culturally competent, and innovative. We encourage this kind of leadership across all sectors including business, government, non-profit, and education.

Regional values



Accountability

We value being effective in our work and achieving measurable outcomes. Our region is known for its research, initiatives, and collaborations. We must be open to criticism and clearly understand when we are not achieving results or have harmed communities.

We recognize that we can maximize our effectiveness by being in partnership with others. We will also be transparent and flexible so that we can change course when needed.



Stewardship

We value our region's resources. Our resources include our natural, economic, and financial resources as well as our infrastructure. We recognize that these resources may be vulnerable over time to changing conditions, including from climate change.

We must design our systems and allocate our resources in ways that can be sustained over time and support the needs of future generations.

Regional vision + goals

Vision Foundation

- The orderly development of our region supports a high quality of life for everyone.
- Our infrastructure and services are economical and support a high quality of life.
- Our region is resilient to a changing climate.
- Our natural resources and parks are abundant and preserved for future generations.

Goals

Our Region is Equitable and Inclusive

Inequities and injustices have been eliminated and all residents and newcomers feel welcome, included, and empowered.

Our Communities are Healthy and Safe

All our region's residents live healthy, productive, and rewarding lives with a sense of security and wellbeing.

Our Region is Dynamic and Resilient

Our region meets the opportunities and challenges faced by our communities and economy including issues of choice, accessibility, and affordability.

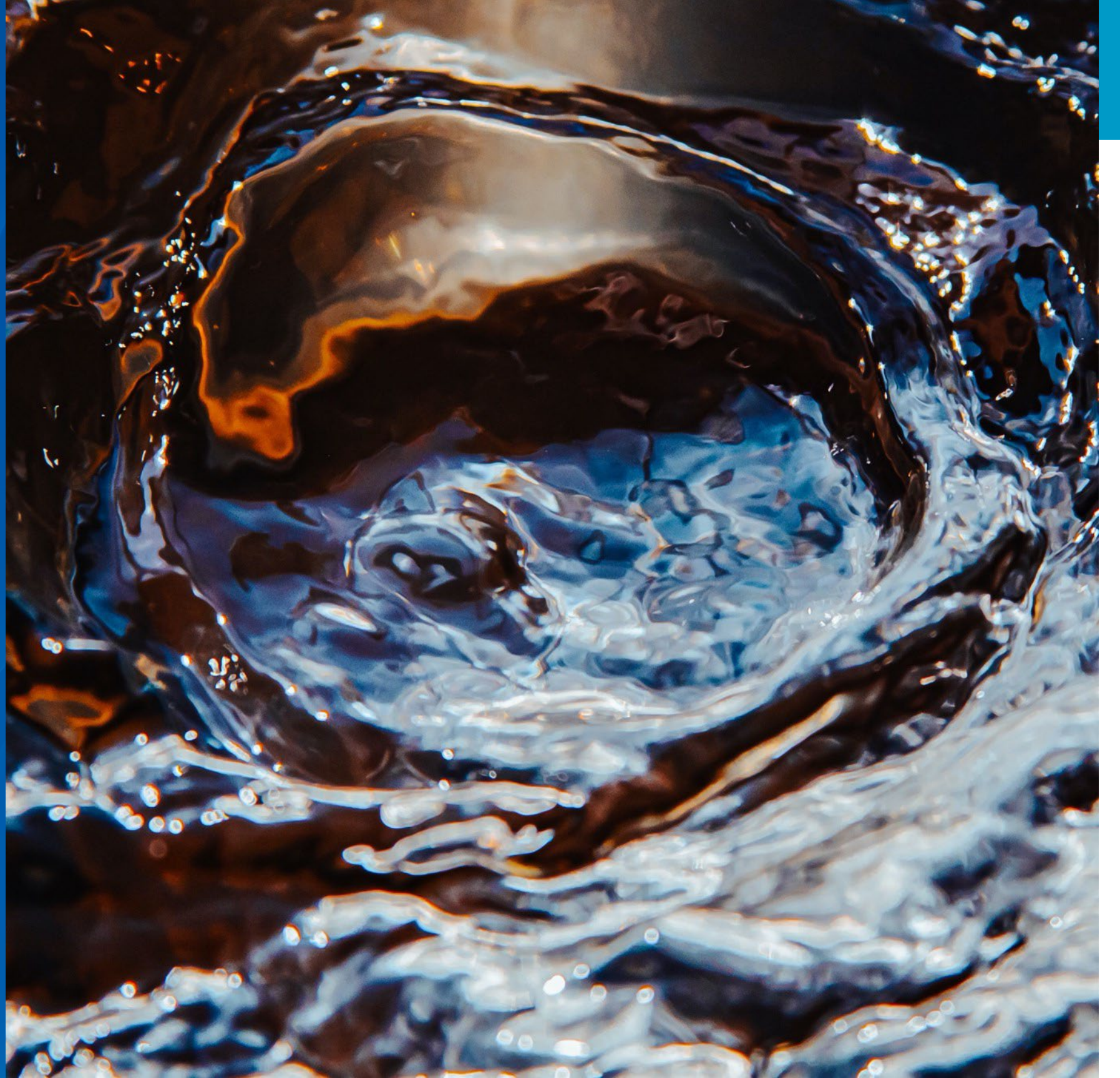
We Lead on Addressing Climate Change

We have eliminated or mitigated greenhouse gas emissions and have adapted to ensure that our communities and systems are resilient to climate impacts.

We Protect and Restore Natural Systems

We increasingly protect, integrate, and restore natural systems to protect habitat and ensure a high quality of life for our region.

Equity Framework



Equity Framework



Equity Framework Grounding Concepts

Contextualized

- Naming institutionalized inequities.
- Centering communities' account of their history.
- Understanding how historical injustice leads to present injustices, disparities, and barriers.
- Examining systems of privilege and power and how they inform the Council's work.

Equity Framework Grounding Concepts

Community-Centered

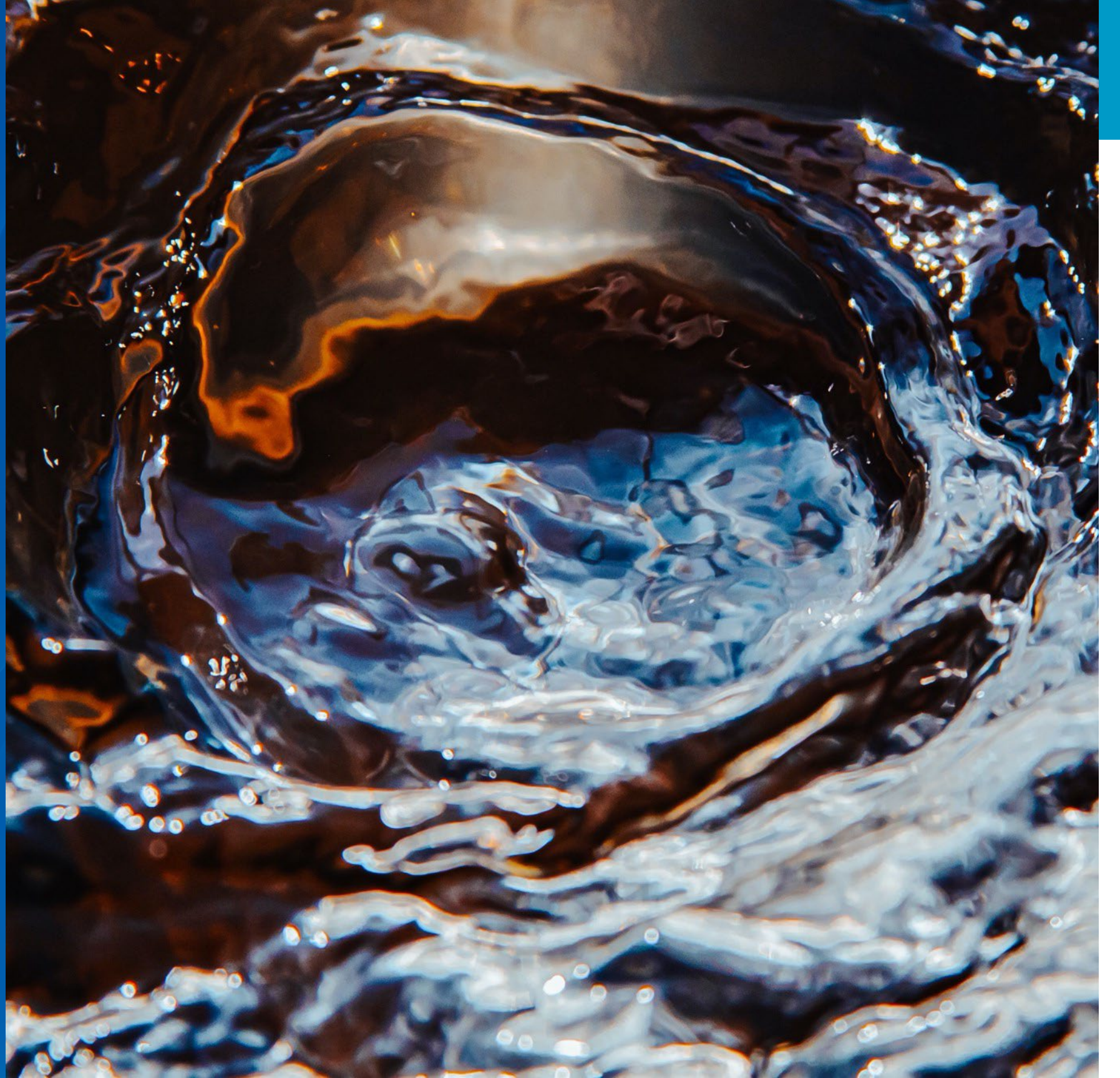
- Community's expertise guides the work.
- Decision making processes are largely participatory.
- Transparency and proactiveness in sharing information.
- Innovation and imaginative thinking embedded into community voices.

Equity Framework Grounding Concepts

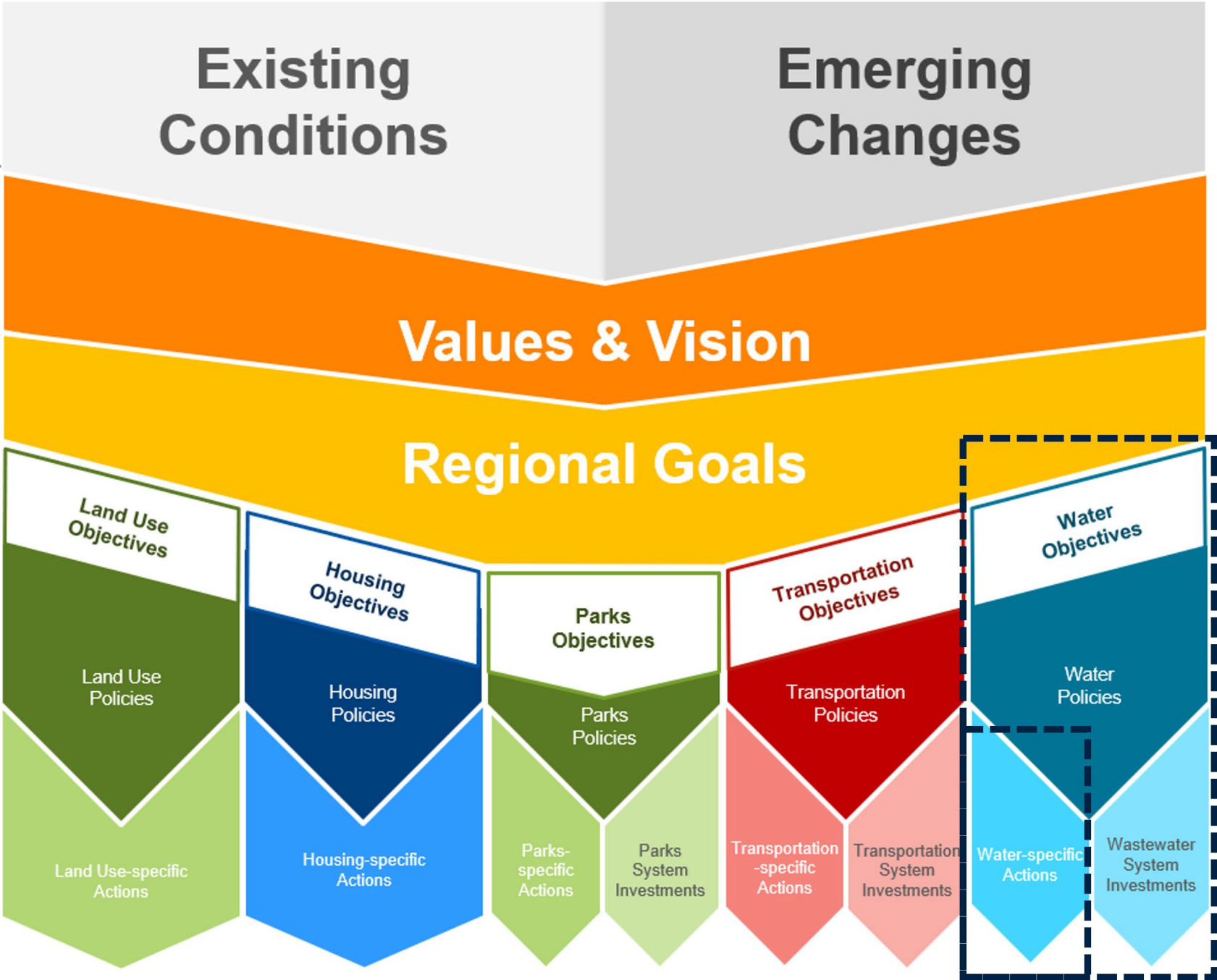
Reparative

- Institutionalizing equity.
- Mechanisms in place to build upon and improve policies as needed.
- Ensuring future generations benefit from solutions.
- The community agrees the solution is commensurate with what caused the inequity.

Water Policy Plan



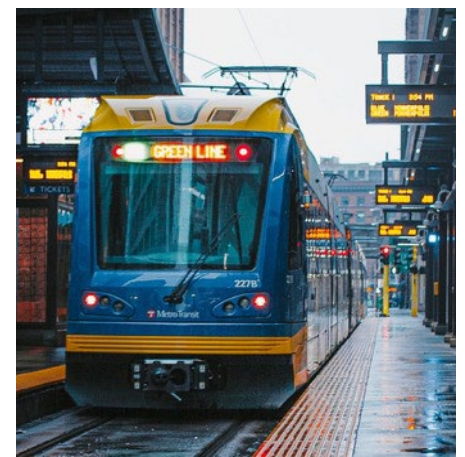
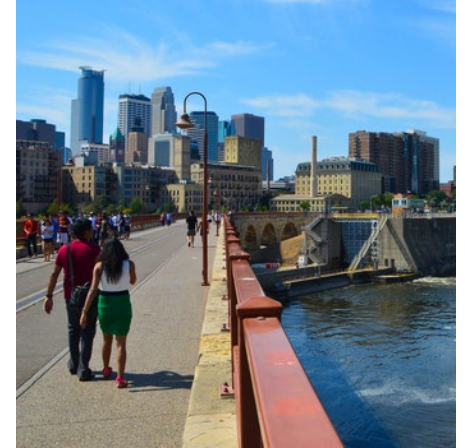
Regional Water Planning



Water Resource Policy Plan (WRPP)

Plan Purpose

- Met Council is developing the 2050 Water Policy Plan, which **focuses on ensuring sustainable water resources in the region**. It is a part of and informed by the Regional Development Guide.
- The WPP provides a **framework for integrative water planning** (wastewater, water supply, and water resources) the Metro Area Water Supply Plan, and the Wastewater System Plan.
- It contains water **policies, strategies, and actions** for both the Met Council and our 180+ local governments within the seven-county region.
- WPP policies **will commit the Council** to take action in the areas of long-range visioning and planning, regional system investments, facility management, technical assistance, research and assessment, and partnerships.



Water Policy Plan

Proposed Table of Contents

- Introduction
- RDG connection to water
- ES principles & role
- Regional water context
- Problem identification
- Goals & objectives
- Policies & strategies
- Regional wastewater system plan
- **Metro Area Water Supply Plan**
- Local water plan requirements
- Data appendices

“Plans are nothing.
Planning is everything.”

~ Dwight D. Eisenhower

Potential revision to Metro Area Water Supply Plan content (draft)



Part 1 Desired Outcomes

- Rational and approach to regional water supply planning
- Connection to regional goals and objectives in the Water Policy Plan
- Regional desired outcomes with 2050 water supplies in mind

Part 2 Regional Commitments

- Connection to regional policies in the Water Policy Plan with more detail around water supply-related actions

Part 3 Regional Dashboard Measures

- Regional summary of information that provides context for water supply planning, describes the current state of sustainable water supply practices, and supports the development of measurable and trackable regional targets

Part 4 Subregional Info

- Subregional information related to water, land use, and other factors
- Key water supply issues, risks and opportunities identified by stakeholders
- Implementation needs (high-level)

Water Policy Plan – Built on foundational work



ES Vision Clean waters for future generations.

Partner

ES partners with national, regional, and local organizations and experts to work towards water sustainability, climate resilience, and equitable water outcomes.

Mission

Plan

ES collaboratively develops plans to enhance, restore, and manage the region's water resources.

Provide

ES provides essential wastewater treatment and collection services to 111 communities and water planning services and resources to the whole region.

Water Policy Plan – Built on foundational work



Water Advisory Feedback

Water Policy Research Feedback

1. Water Reuse
2. Water and Climate
3. Rural Water Concerns
4. Wastewater Planning and Service Considerations
5. Water Quality
6. Protecting Source Water Areas

Water Policy Plan – Built on foundational work

MAWSAC/TAC Goals

- 1. Water Supply Infrastructure:** Communities can act quickly, thoughtfully, and equitably to address aging infrastructure, contamination, changing groundwater conditions, changing water demand, and financial challenges.
- 2. Water Quality:** Communities have the resources they need to provide a safe water supply. A shared process is developed that allows communities, water utilities, and regulators to respond in a more coordinated and effective way to both contaminants of emerging concern and existing contamination.
- 3. Land use and Water Supply Connections:** Public water suppliers, land use planners, and developers have tools a, funding and authority to work together – supported by aligned agency directions - to guide and support development in ways that balance communities' economic needs while protecting the quantity and quality of source waters that are vital to the region's communities.
- 4. Understand and Manage Groundwater and Surface Water Interactions:** Water resource managers, community planners, and leaders understand how groundwater and surface water interact and how those interactions impact water supply sustainability.
- 5. Sustainable Water Quantity*:** Communities and water agencies understand the sustainable limits of groundwater and surface water sources. Agency directions are aligned and support local plans to supply demand that exceeds sustainable withdrawal rates using the most feasible combination of alternative groundwater or surface water sources, conservation, reclaimed wastewater and stormwater reuse.

**Added after 2022 report to Met Council, Legislature.*

Proposed Water Policy Plan objectives

1. SUSTAINABLE WATERS:
Ensure clean, abundant waters for current and future regional needs

2. CLIMATE: Create climate-resilient water sources, ecosystems, and water infrastructure through mitigation, innovative design, and adaptive planning.

3. INFRASTRUCTURE: Maximize water infrastructure investments and identify future investment opportunities that result in benefits at multiple scales.

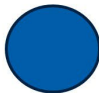

4. FUNDING: Sustainably fund water protection and planning efforts.

5. HEALTH: Protect public and ecosystem health to maintain, restore, and enhance a high quality of life across the region.

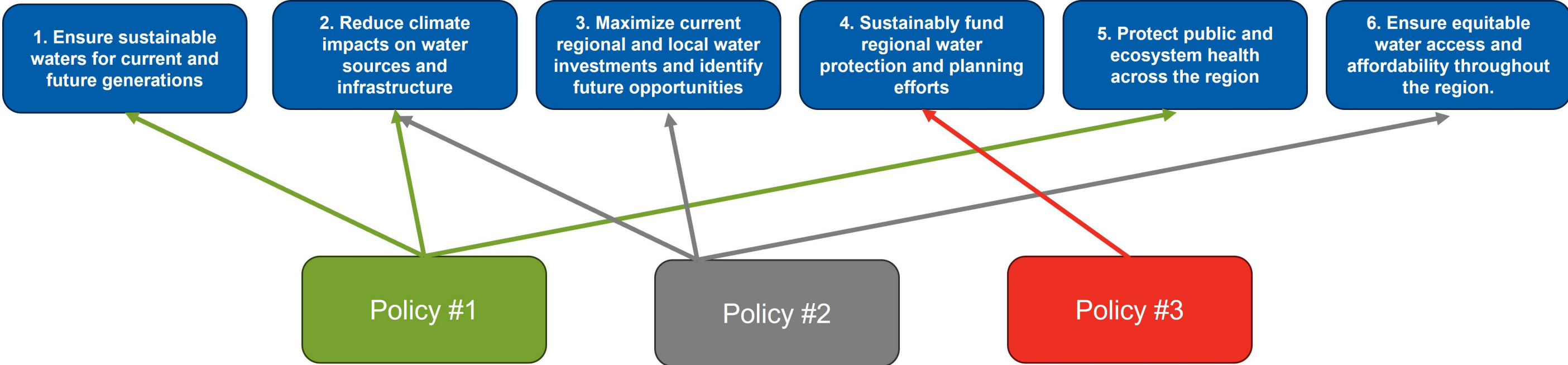
6. EQUITY: Ensure that equitable water benefits and water services are accessible and shared amongst all residents and communities.

Connection between goals & objectives

	Our Region is Equitable and Inclusive	Our <u>Communities</u> are Healthy and Safe	Our Economy is Dynamic and Resilient	We Lead on Addressing Climate Change	We Protect and Restore Natural Systems
Achieve Sustainable Waters	○	○	●	●	●
Reduce Climate Impacts	○	●	○	●	●
Maximize and identify regional investment	○	●	●	○	●
Finance our regional water efforts	○	○	●	○	●
Protect public & ecosystem health	○	●	○	●	●
Water Equity	●	●	○	●	○

 Directly connected
 Indirectly connected

Next steps – drafting policy



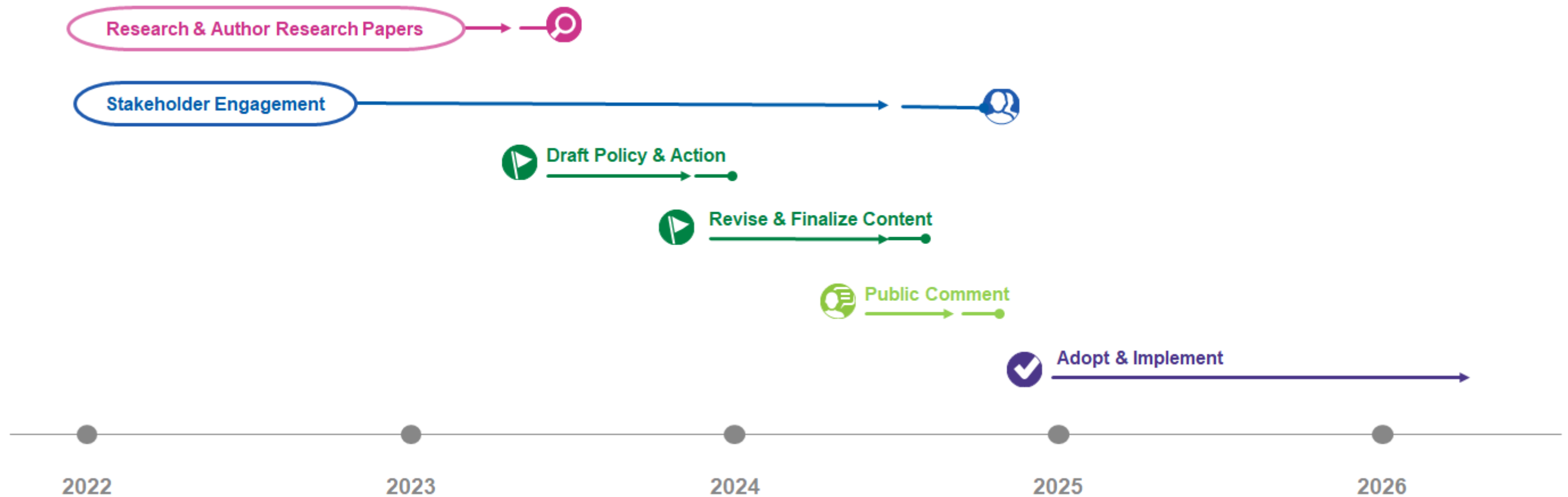
- ◆ Share with Environmental Services’ executive leadership & Environmental Committee members
- ◆ Continue to engage with advisory committees (MAWSAC/TAC, WAG) and stakeholder groups
- ◆ Have plan ready for public comment period by summer 2024

Let's head into Mural



- **What are your first impressions?**
- **Are we on the right path?**
- **Do the objectives feel like they are at the right level and specificity?**
- **Did we miss an objective?**
- **Should we modify the plan objectives?**

Timeline for the 2050 Water Policy Plan and the Metro Area Water Supply Plan



Thank you

Jen Kostrzewski

Assistant Manager,
Water Planning and Policy
Jennifer.Kostrzewski@metc.state.mn.us

