



# Water Policy Plan Update

Policy discussion and direction



Jen Kostrzewski

January 30, 2024

# Regional Values, Vision, and Goals

## Values

Values are core beliefs or principals that guide the work of the Council, our expectations of partnerships, and our policy and program development.

## Vision

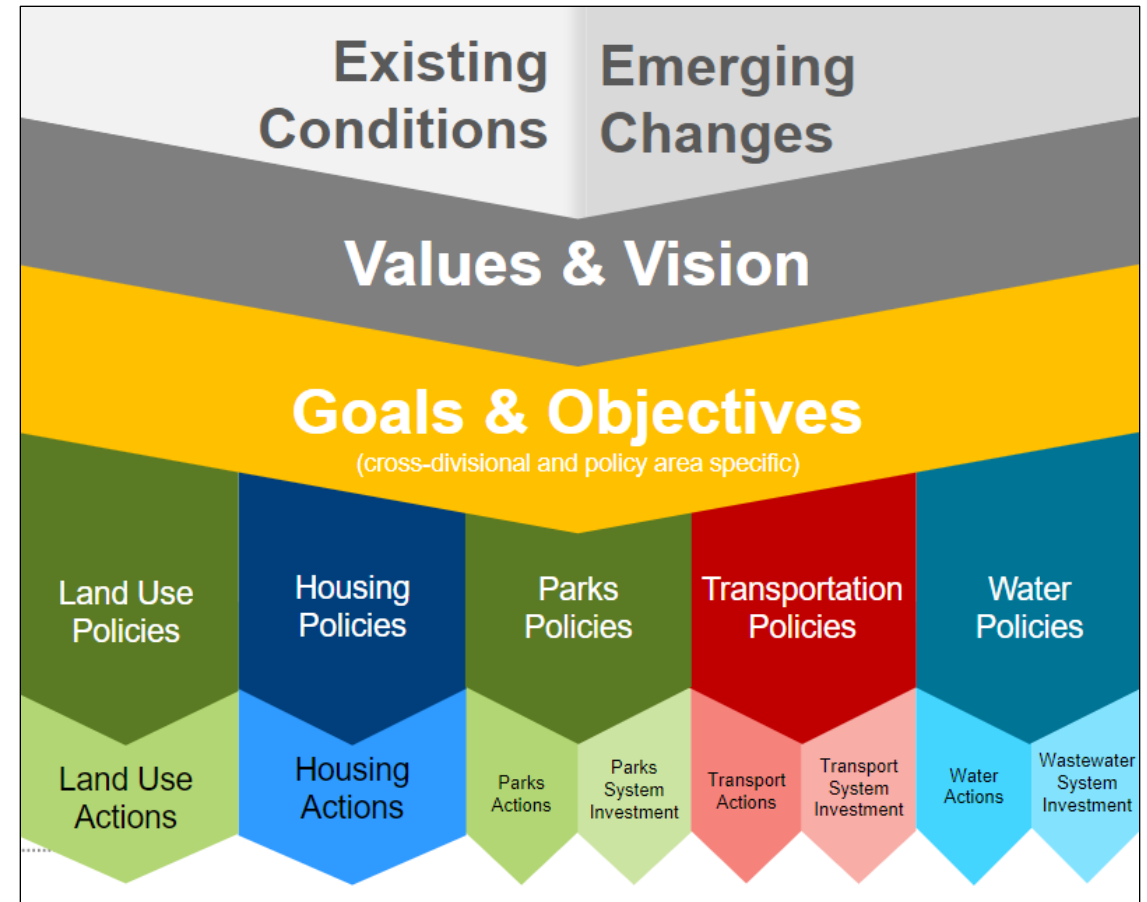
Our vision is what we want to achieve for the region through our policies, practices, programs, and partnerships.

## Goals

Our goals broadly describe the *desired outcomes* that we want to achieve for the region.

## Cross-Cutting Goals

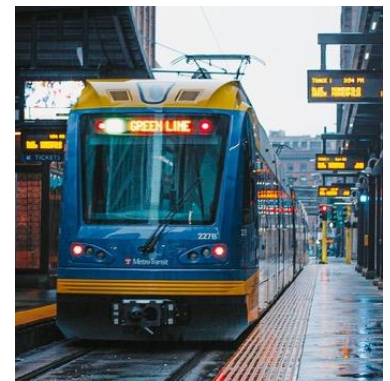
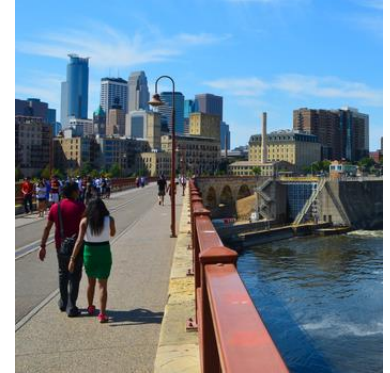
Goals that require special collaboration across policy and work areas.



# Water Policy Plan (WPP)

## Plan Purpose

- Met Council is developing the 2050 Water Policy Plan, which **focuses on ensuring sustainable water resources in the region**. It is a part of and informed by the Regional Development Guide.
- The WPP provides a **framework for integrative water planning** (wastewater, water supply, and water resources) the Metro Area Water Supply Plan, and the Wastewater System Plan.
- It contains water **policies, strategies, and actions** for both the Met Council and our 180+ local governments within the seven-county region.
- WPP policies **will commit the Council** to take action in the areas of long-range visioning and planning, regional system investments, facility management, technical assistance, research and assessment, and partnerships.



# Draft WPP objectives



**CLIMATE:** Create climate-resilient water sources, ecosystems, and water infrastructure through mitigation, innovative design, and adaptive planning.



**INFRASTRUCTURE:** Optimize regional water protection, planning, and infrastructure investments.



**HEALTH:** Protect public and ecosystem health to maintain, restore, and enhance a high quality of life, regional waters, and water services across the region .



**EQUITY:** Water benefits and services are accessible and shared amongst all residents and communities.

# Policy template

## Topic Area

Narrative language to set context for policy.

### Regional Water Policy

The policies are intended to apply for the whole region, knowing that there are many agencies, organizations, and people connected by water.

### Desired Outcomes:

Statements that describe specific changes that will result of the policy.

### Connected Objectives:



### Example Actions:

#### PARTNER

- Actions that require collaboration with other organizations to enact.

#### PLAN

- Actions that plan to create, protect, maintain, enhance, and restore regional waters and water infrastructure.

#### PROVIDE

- Actions that help the Met Council deliver our water planning and treatment services to the region.

# Draft policy topics



- Integrated Water Policy
- Equitable Water Outcomes Policy
- Water Monitoring, Data, and Assessment Policy
- Water and Climate Resiliency Policy
- Land Use Connection Policy
- Water Conservation and Efficient Use Policy
- Water Monitoring, Data, and Assessment Policy

**More policies to come...**

# Integrated Water Policy



## Desired Outcomes:

- Federal, tribal, state, regional, and local water plans and policies align to support sustainable and equitable water outcomes.
- Water planning and management decisions consider risks and impacts across the entire water sector.
- All water organizations work collectively across geographical, political, social, and cultural boundaries to achieve water sustainability in the region.

## Example Actions:

- Work within the metro region to address issues that transcend water organization boundaries to prepare water management plans that promote the enhancement and restoration of local and regional waters (lakes, rivers, streams, wetlands, and groundwater).
- Develop plan requirements that reflect and support addressing local and regional water planning and management challenges.

# Equity Water Outcomes Policy



## Desired Outcomes:

- All residents have access to clean, safe, and affordable water for drinking, recreation, cultural, and other social or commercial uses.
- Water service and benefit gaps are prioritized and addressed in vulnerable populations and communities.
- Historically underrepresented and marginalized populations are involved in water planning conversations and decisions.

## Example Actions:

- Engage with residents and other local and regional partners to understand local perspectives and regional water values and identify services and benefit gaps.
- Partner with groups and organizations who promote water equity and connect residents with water services and benefits.
- Water infrastructure investments are planned for by prioritizing environmental justice approaches that promote equitable public and ecosystem health outcomes and undue past harms



# Breakout discussion



- **What are your first impressions?**
- **Are we on the right path?**
- **Should we modify the policies?**
- **Did we miss an action?**

# Break



## 5 Minute Break

# Water Monitoring, Data, and Assessment Policy



## Desired Outcomes:

- The region is a steward of water, understanding the current status of its waters, whether its quantity or quality, to be prepared for the future.
- The Council and regional partner organizations will monitor the region's surface water, groundwater, and wastewater to assess current conditions, trends, and assure regulatory compliance.

## Example Actions:

- The Met Council will continue to provide monitoring data to our partners through our regional database that contains easily accessible water quality, quantity, and other water-related information collected as a part of the Council's monitoring programs.
- In partnership with other water professionals, Council staff will complete technical studies to understand regional and sub-regional long-term water supply availability and demand.

# Water and Climate Resiliency Policy



## Desired Outcomes:

- Council and local actions mirror and are in alignment with the Minnesota Climate Action Framework.
- The region is prepared for impacts and associated risks due to climate change and has the tools and resources to adapt and thrive.

## Example Actions:

- The Metropolitan Council will connect, partner, and learn from other water utilities and planning organizations as we take on water and climate challenges.
- The Metropolitan Council will manage our facilities and land holdings to reduce impervious surfaces, integrate green infrastructure and nature-based solutions within our stormwater management systems, install native plantings where possible, and be a regional leader in climate-focused land management.

# Breakout discussion



- **What are your first impressions?**
- **Are we on the right path?**
- **Should we modify the policies?**
- **Did we miss an action?**



Thank you

**Jen Kostrzewski**

Assistant Manager, Water Planning and Policy  
Jennifer.Kostrzewski@metc.state.mn.us

**Steve Christopher**

Environmental Analyst, Water Planning and Policy  
Steve.Christopher@metc.state.mn.us

**Judy Sventek**

Water Resources Manager  
Judy.Sventek@metc.state.mn.us

**Kyle Colvin**

Manager, Wastewater Planning and Community Programs  
Kyle.Colvin@metc.state.mn.us

