



2050 Water Policy Plan Update

Jen Kostrzewski, Steve Christopher, Emily Schon, and Jen Kader

May 16, 2024





Contents

Background	2
Water Policy Plan Engagement	4
Water Policy Plan Draft Content	6
Draft Wastewater System Plan	14
Draft Metro Water Supply Plan	21
Feedback and Next Steps	33

Regional Development Guide Structure

Values

Core beliefs that guide how we work toward our vision

Vision

What we want to achieve for the region

Goals

Desired end states for the region, to successfully achieve the vision

Objectives

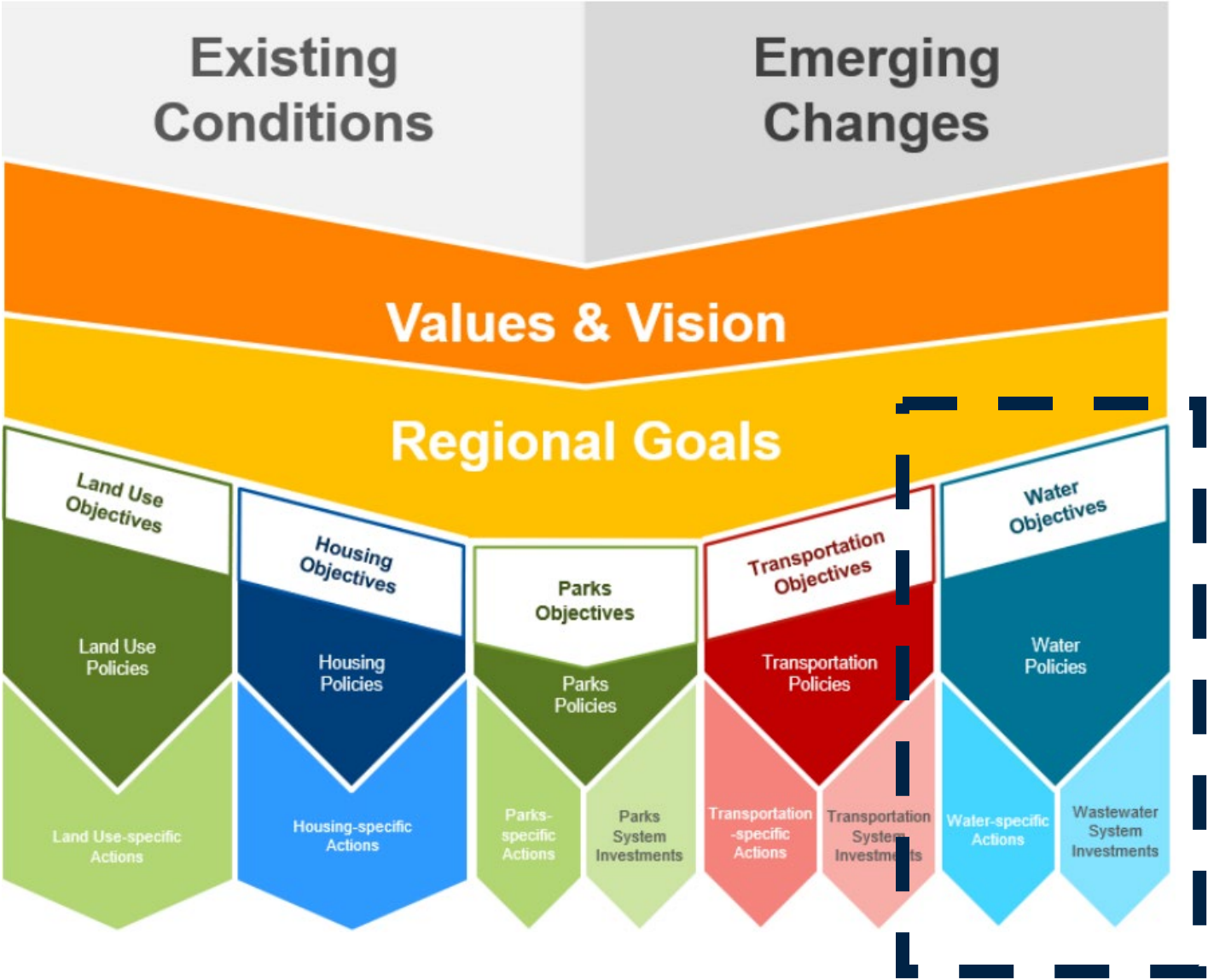
Achievable results that advance regional goals through areas of Council responsibility

Policies

Intent and approach to achieve objectives (expectations for both Council and partners)

Actions

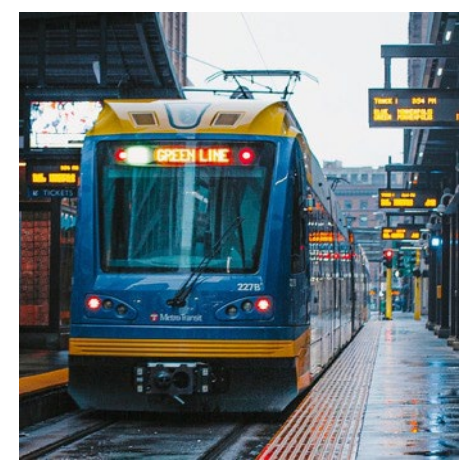
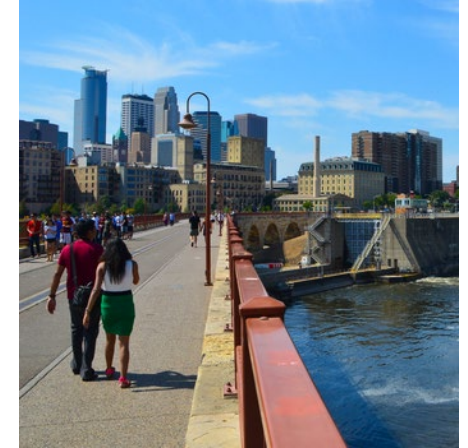
Policies are implemented through specific actions by the Council and partners



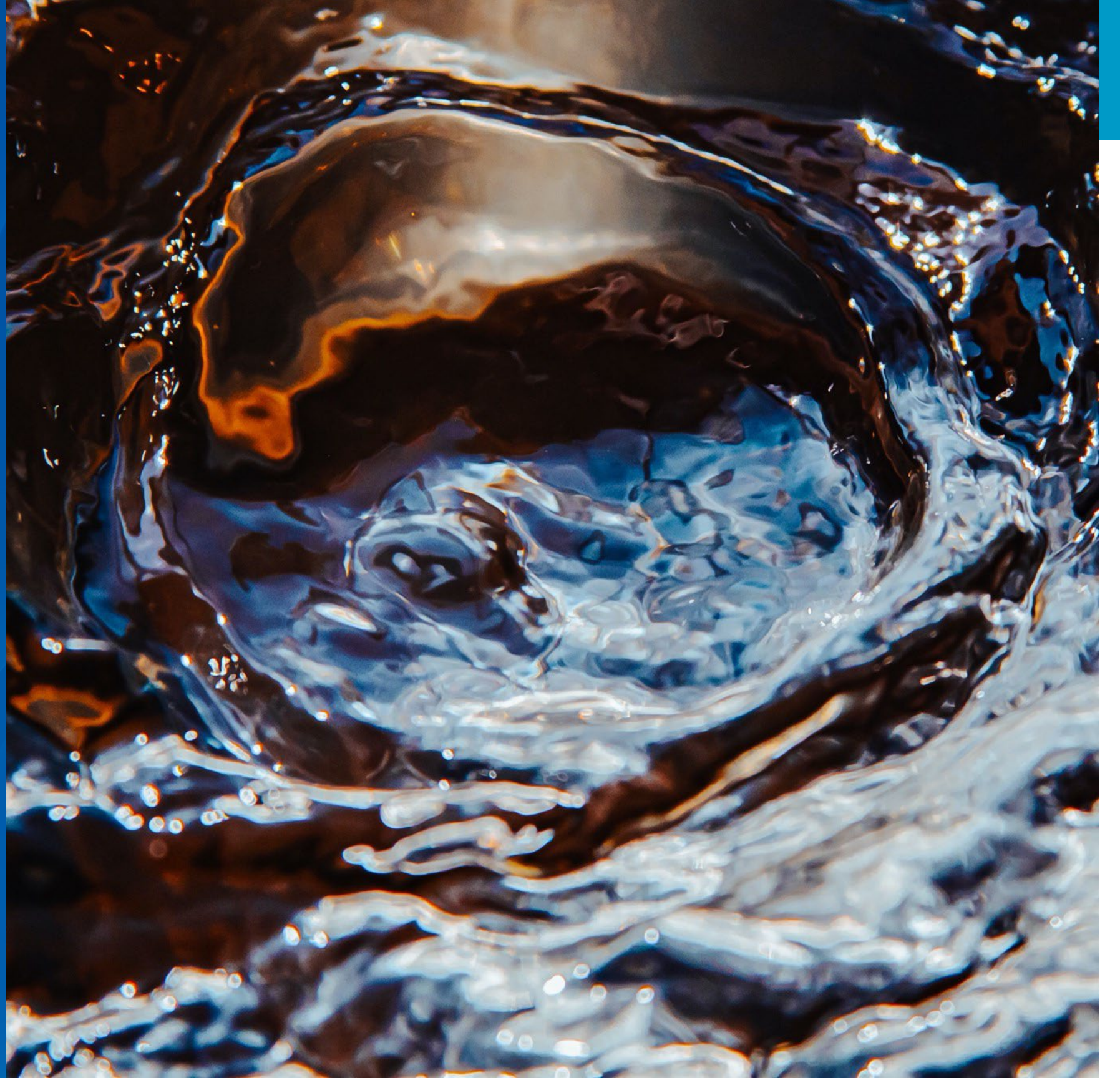
Water Policy Plan (WPP)

Plan Purpose

- Met Council is developing the 2050 Water Policy Plan, which **focuses on ensuring sustainable water resources in the region**. It is a part of and informed by the Regional Development Guide.
- The WPP provides a **framework for integrative water planning** (wastewater, water supply, and water resources) the Metro Area Water Supply Plan, and the Wastewater System Plan.
- It contains water **policies, strategies, and actions** for both the Met Council and our 180+ local governments within the seven-county region.
- WPP policies **will commit the Council** to take action in the areas of long-range visioning and planning, regional system investments, facility management, technical assistance, research and assessment, and partnerships.



Water Policy Plan Engagement



Technical Advisory Groups



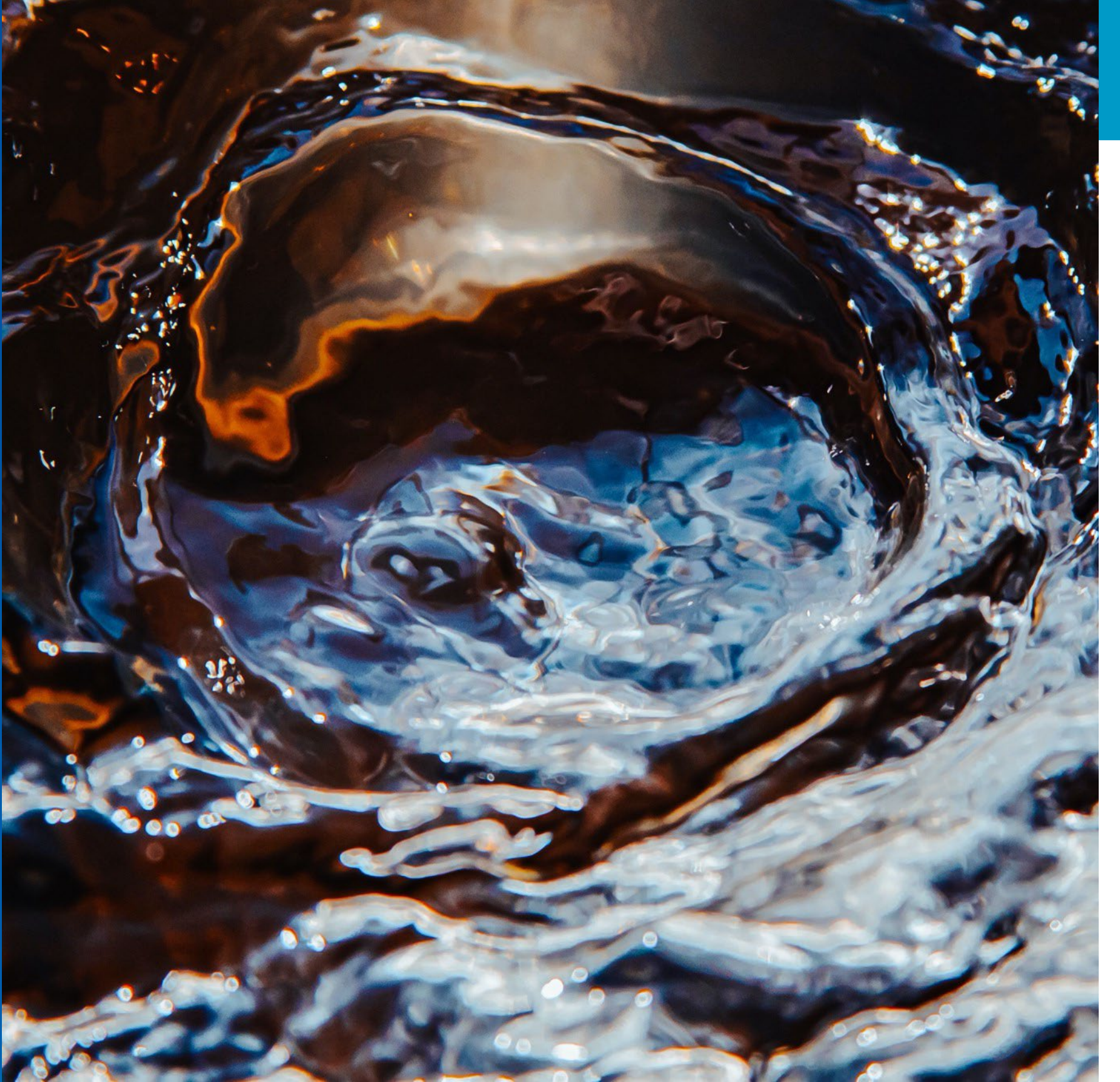
Environment Committee

**Met Council Committee of the Whole
Water Advisory Group (WAG)**

**Metro Area Water Supply Advisory Committee
(MAWSAC)**

Technical Advisory Committee (MAWSAC-TAC)

Draft Water Policy Plan Content



Water Policy Plan

Draft Table of Contents

- Introduction
- Regional Development Guide connection to water
- Principles, goals, and roles
- Regional water context
- Problem identification
- Policies & actions
- Regional wastewater system plan
- Metro area water supply plan
- Appendices



Plans are nothing.
Planning is everything.”

~ Dwight D. Eisenhower

Draft WPP objectives



CLIMATE: Create climate-resilient water sources, ecosystems, and water infrastructure through mitigation, innovative design, and adaptive planning.



INVESTMENTS: Optimize regional water protection, planning, and infrastructure investments.



HEALTH: Protect public and ecosystem health to maintain, restore, and enhance a high quality of life, regional waters, and water services across the region .



EQUITY: Water benefits and services are accessible and shared amongst all residents and communities.

Action Categories

Partner

The Met Council partners with national, regional, and local organizations and experts to work towards water sustainability, climate resilience, and equitable water outcomes.

Plan

The Met Council collaboratively develops plans to protect, enhance, restore, and sustainably manage the region's water resources

Provide

The Met Council provides essential water planning services to the entire region and wastewater treatment and collection services to 111 communities.

Draft Policy Topics



1. Integrated Water
2. Water Equity
3. Water Monitoring, Data, and Assessment
4. Climate Change Resilience
5. Water-Centered Growth and Development
6. Regional Wastewater Service Area
7. Conservation and Sustainability
8. Water Reuse
9. Pollution Prevention and Contaminant Management
10. Regional Wastewater Operation and Finance
11. Inflow and Infiltration
12. Water Sector Workforce Development

Integrated Water Policy



Water planning, management, and operation approaches are collaborative and span the natural and built water cycle.

PARTNER

Convene and facilitate discussions that support sustainable waters and delve into regional water issues that transcend community or watershed organization boundaries.

PLAN

Provide local plan timing, requirements, and guidance to align regional and local efforts in water planning, management, and development decisions.

PROVIDE

Provide technical information to watershed organizations, city planners, and local water providers on practices to use and incorporate into their operations or planning efforts that protect water quality and quantity.

Climate Change Resilience Water Policy



The impacts of climate change on natural waters and the built water environment are proactively addressed to minimize impacts to public and ecosystem health and ensure the benefits of clean and plentiful water are protected and available for current and future generations.

PARTNER

Partner with and support academic institutions and other organizations to conduct research to generate metro area-specific climate change information, identify potential risks and benefits, and better understand future climate scenarios based on current science and models.

PLAN

Assess the climate vulnerabilities and risks within Met Council facilities and operations and reduce the impact of climate on water resources, land management, water planning, and regional wastewater services now and in the future.

PROVIDE

Manage and renovate facilities and land holdings to reduce impervious surfaces, integrate green infrastructure and nature-based solutions within our stormwater management systems, install native plantings where possible, and be a regional leader in climate-focused land management.

Water-Centered Growth and Development Policy



As the region grows, the effects of development, redevelopment and land use changes on water utilities and natural waters are planned for and inform management approaches that protect public and ecosystem health and ensure the benefits of clean and plentiful water are protected, restored, and enhanced across all communities.

PARTNER

Foster preservation of regionally significant ecologic areas as rural areas develop through engaging stakeholders, technical assistance, outreach to local governments, and plan review.

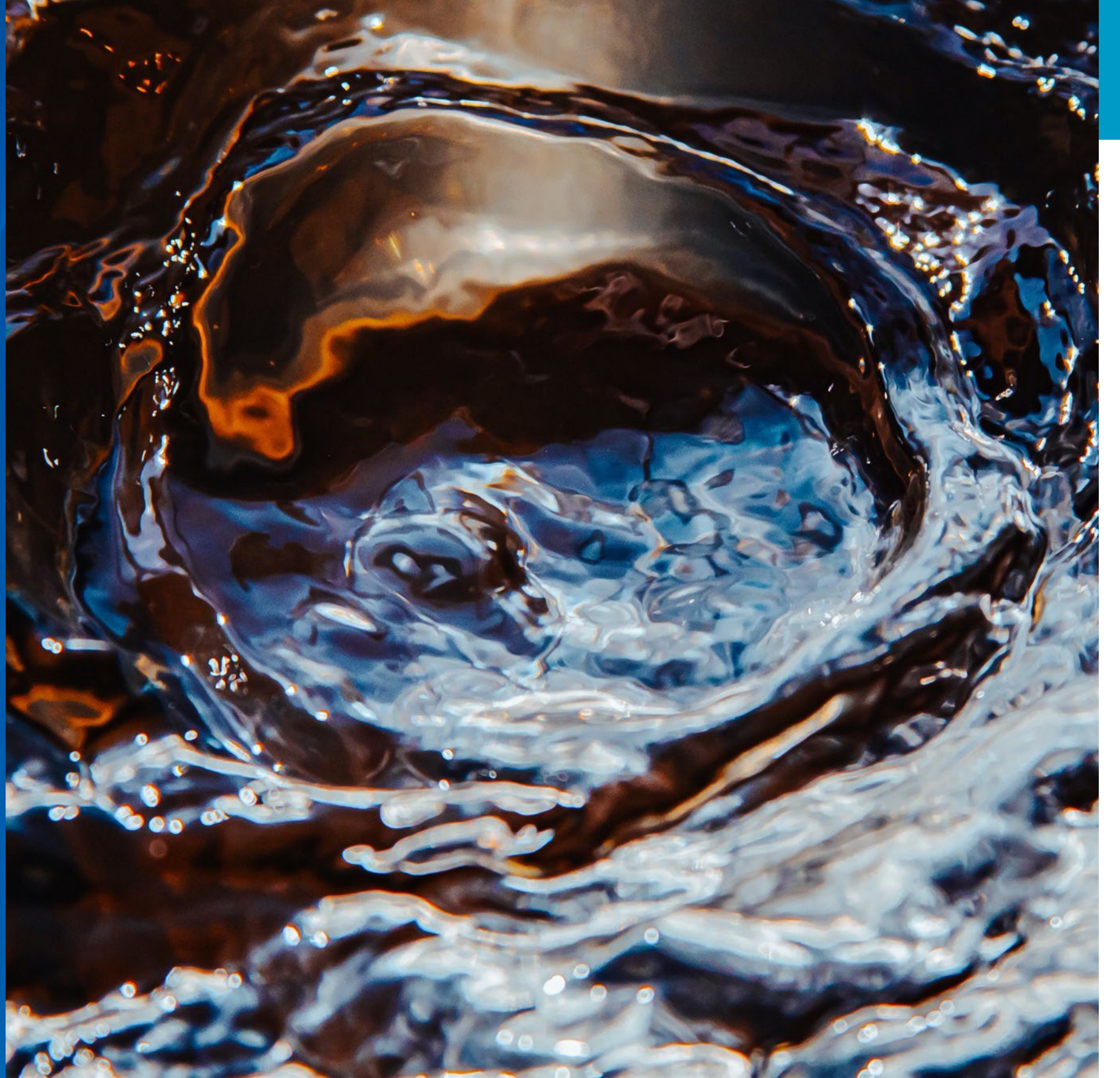
PLAN

Evaluate how growth and development, urban and rural land uses, and overall land use change impact and influence water supplies and local water needs.

PROVIDE

Identify and develop tools and resources to better understand pressures on and interconnection of the region's rivers, lakes, streams, and aquifers to help regional, local, and watershed planners and water utility staff make informed water management decisions.

Draft Wastewater System Plan



Statutory References



Metropolitan System Plans - Contents

Minnesota State Statute - Chapter 473:

- Population, employment, household forecasts by region
- Goals, objectives and priorities, system description, staging, Capital Improvements, funding source description.
- Issues, needs, and opportunities for system
- Policies to effectuate Council's goals, objectives and priorities
- Fiscal implications of Council's plan
- Relationship of System Plan to local comprehensive plans

System Plan Purpose

The System Plan is:

- 20-year vision as to how regional wastewater service will be provided
 - Wastewater flow projections
 - Projected capital needs
 - Current and future service areas
- What local comprehensive sewer plan updates and amendments are compared against. *Plan modifications are required if non-conforming:*
 - System impact to / System departure from
- Updated every 10-years based on local comprehensive plan content which was approved by the Council
- Includes long-term (post 20-year) vision for how regional wastewater service will be provided

System Plan Contents

20-Year Planning

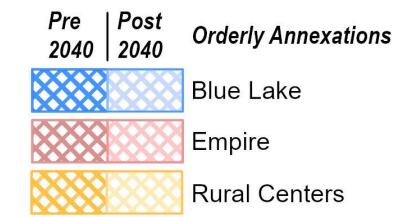
- High Level System Overview
 - Assets
 - Population, households, employment forecasts
 - Wastewater flow projections
- Regional Resource Recovery Facilities
 - Capacity (current and ultimate)
 - Treatment requirements
- Capital Improvement Program
 - Major projects
 - Regulatory strategies and anticipated treatment needs
- Considerations Guided by WPP
 - Reuse
 - Energy, climate change
 - Regulatory trends

Post 20-Year Planning

- Regional Resource Recovery Facilities (new – Scott Co, Carver Co, NE Metro)
- Interceptor Capacity Projects
- Regulatory Strategies

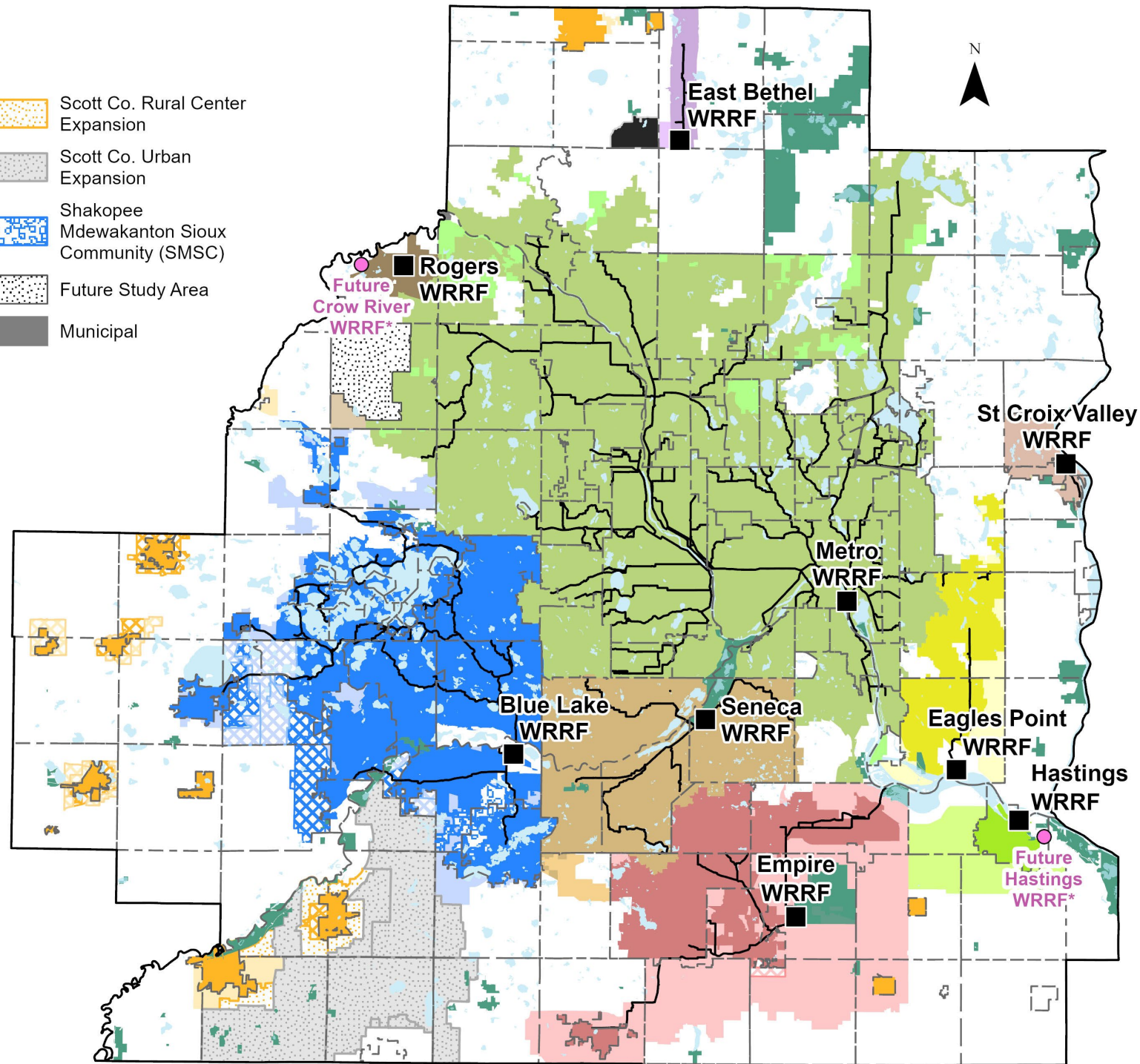


Long-Term Service Area (LTSA)



- Water Resource Recovery Facility (WRRF)
- Future WRRF*
- MCES Interceptor
- Lakes & Rivers
- Non-Local Park & Wildlife Areas

- Scott Co. Rural Center Expansion
- Scott Co. Urban Expansion
- Shakopee Mdewakanton Sioux Community (SMSC)
- Future Study Area
- Municipal



*Rogers and Hastings WRRF decommissioned by 2030

**Draft
LTSA Not Finalized**



Resource Recovery Strategy



Resource Recovery

Current Efforts:

- Water – through wastewater treatment
- Heat/Energy – heat energy and generation from solids incineration and biosolids production
- Biosolids – fertilizer for farmers and community partners
- Reuse – internal applications

Future Work:

- Thermal heat recovery from wastewater effluent
- Solids/Biosolids across region
- Wastewater reuse across region

Capital Program



Region-Wide Improvements

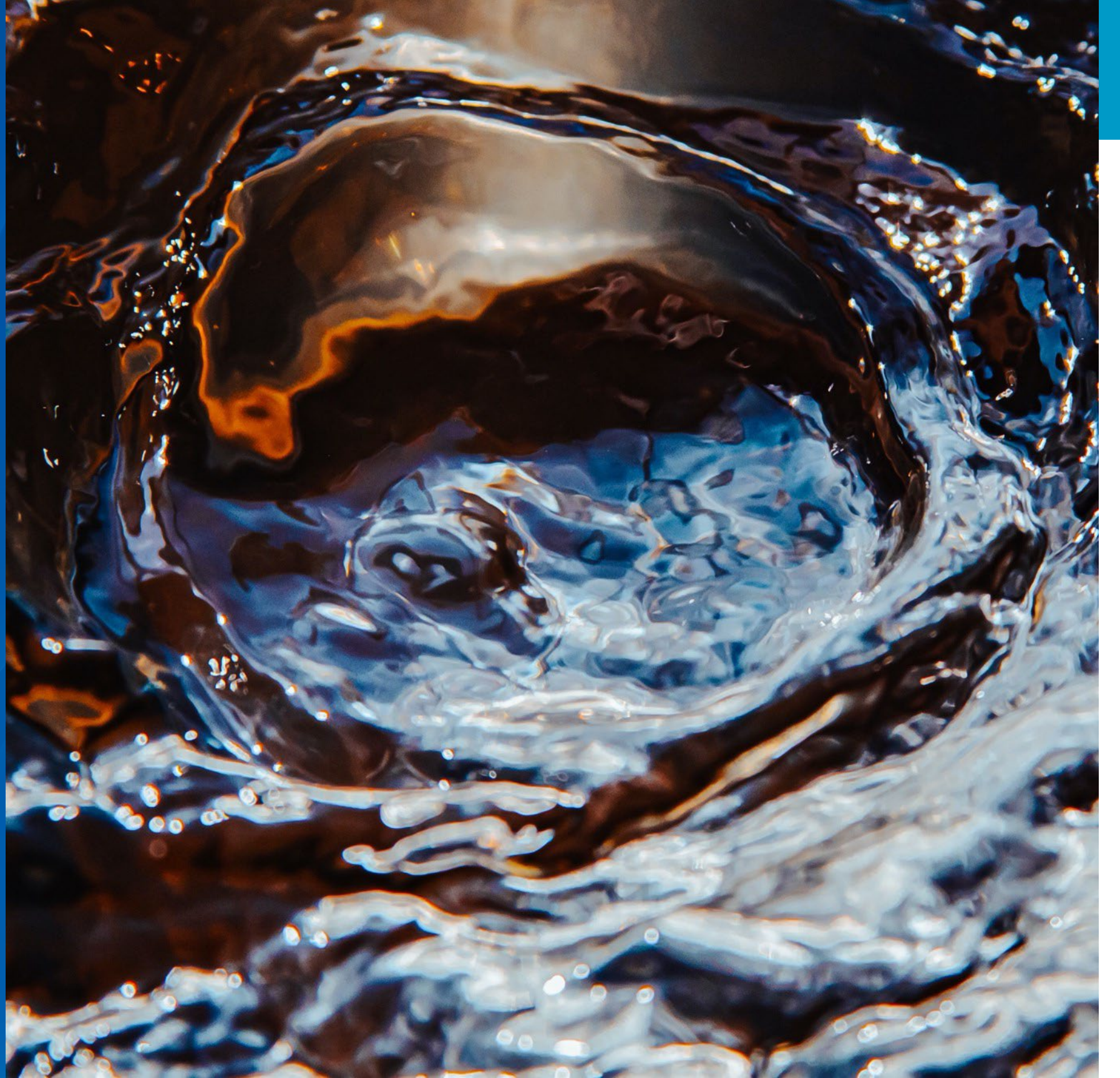
Project Objectives:

- Asset Preservation
- System Expansion
- Quality Improvements

Types of projects:

- Interceptor rehabilitation and new construction
- Lift station and flow metering (new, upgrades, and rehabilitations)
- Resource recovery solids processing improvements
- Resource recovery facilities (new, upgrades, and rehabilitations)
- Regulatory related improvements

Draft Metro Water Supply Plan



Draft Metro Water Supply Plan



Purpose

- Statutorily defined: Minnesota Statute 473.1565
 - Develop a metropolitan area water supply plan that:
 - **Provides guidance** for local water supply systems and future regional investments
 - Emphasizes **conservation, interjurisdictional cooperation, and long-term sustainability**
 - Addresses the **reliability, security, and cost-effectiveness** of the metropolitan area water supply and its local and subregional components
- Developed in cooperation with (and approved by) MAWSAC and its TAC.
- The Council must consider the work and recommendations of MAWSAC when it prepares its regional development framework.

Metro Area Water Supply Plan draft content



Part 1 Desired Outcomes

- Rational approach to regional water supply planning
- Regional desired outcomes with 2050 water supplies and regional goals in mind

Part 2 Regional Commitments

- Connection to regional policies in the Water Policy Plan with more detail around water supply-related actions

Part 3 Regional Dashboard Measures

- Regional summary of information that provides context for water supply planning, describes the current state of sustainable water supply practices, and supports the development of measurable and trackable regional targets

Part 4 Subregional Info

- Subregional information related to water, land use, and other factors
- Key water supply issues, risks and opportunities identified by stakeholders
- Implementation needs (high-level)

Draft Metro Water Supply Plan



MAWSAC-recommended approach

- Subregional focus to reflect nuances across metro
- Integrated perspectives to round out content
- Clear through lines from subregional actions to WPP polices

Purpose of this effort

To build shared understanding of the following at a subregional level:

Context and current conditions

Definition of success

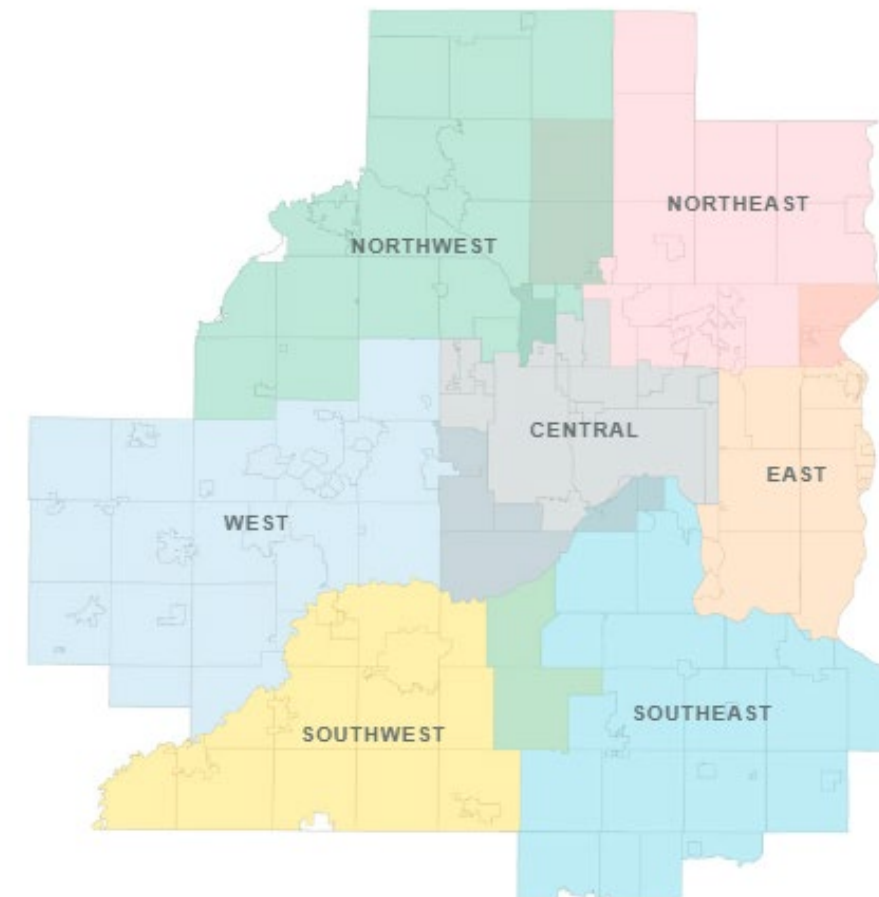
Issues and barriers

Strategies to address them

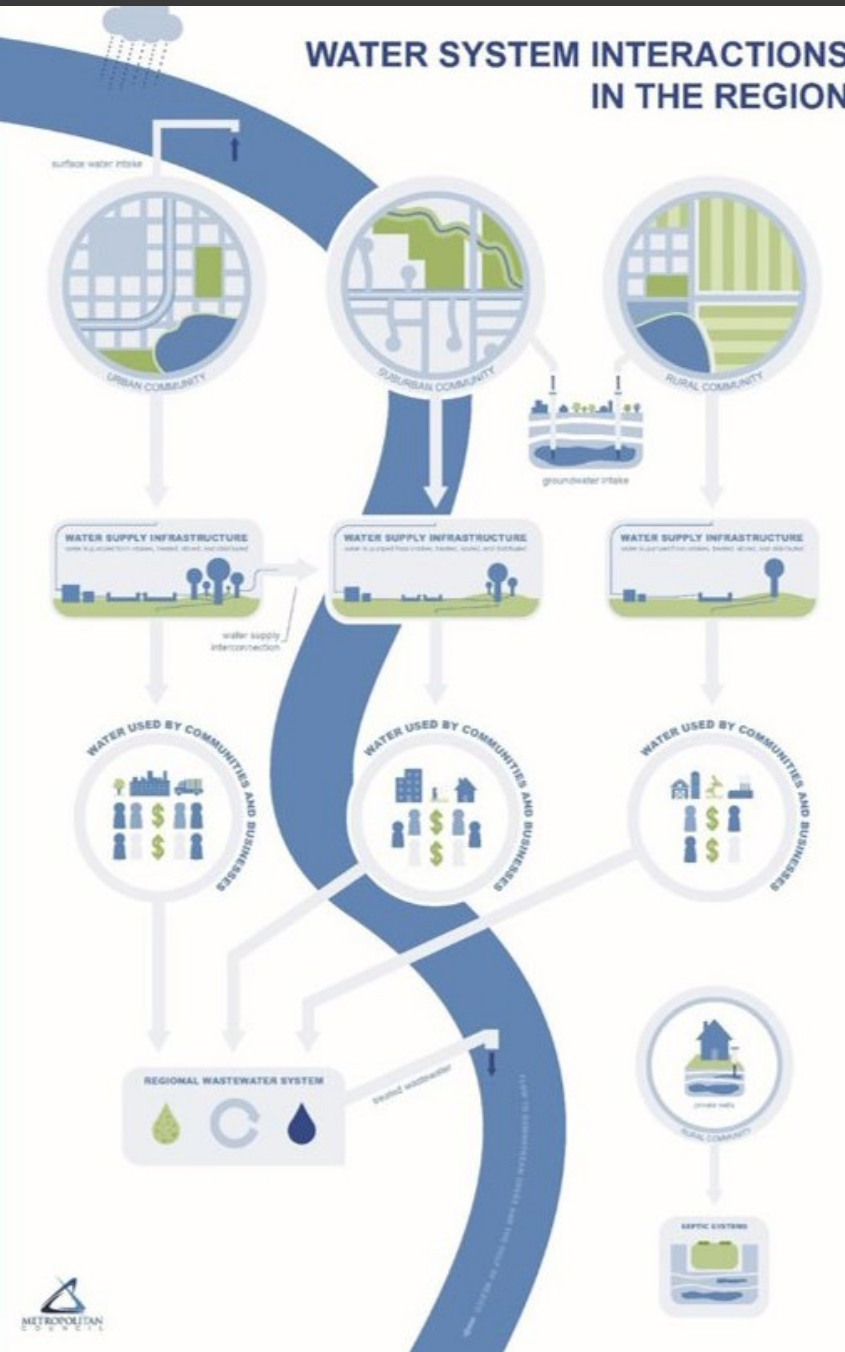
- Practices
- Policies
- Partnerships

Timeline/sequencing

Resources needed to sustain effort towards success over time



Integrating perspectives



- **Natural system and land use**
 - Watershed Organizations
 - SWCDs and Conservation Districts
 - Community Development and Land Use staff
- **Public water supply**
 - Water supply operators
 - City engineers
 - Public works staff
- **Public health**
 - County staff
 - Staff or organizations supporting private well users
- **Met Council: Water Policy and Planning staff (watershed/surface water, water supply, wastewater), Local Planning Assistance staff**

Getting the input

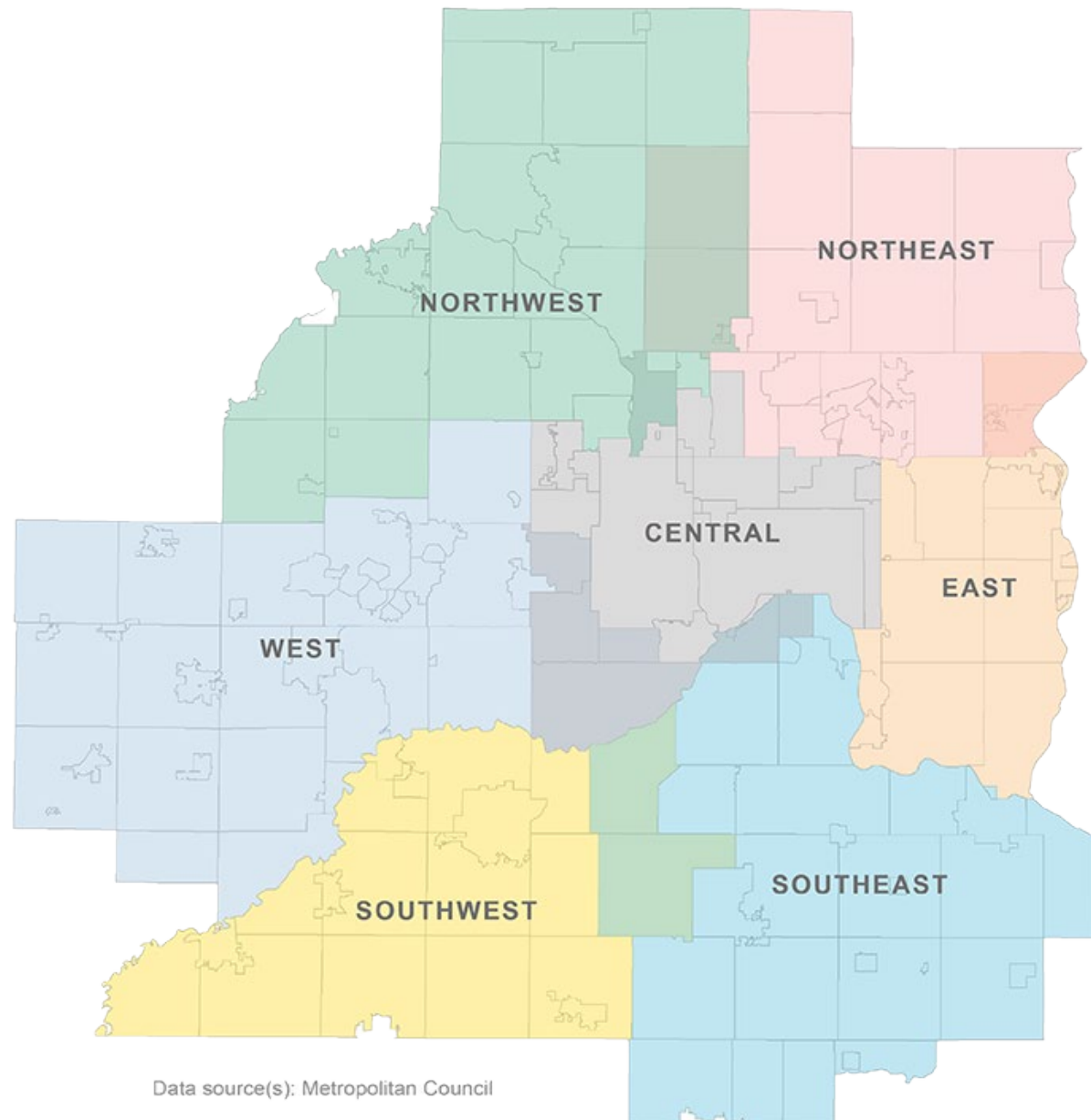


Highly participatory process

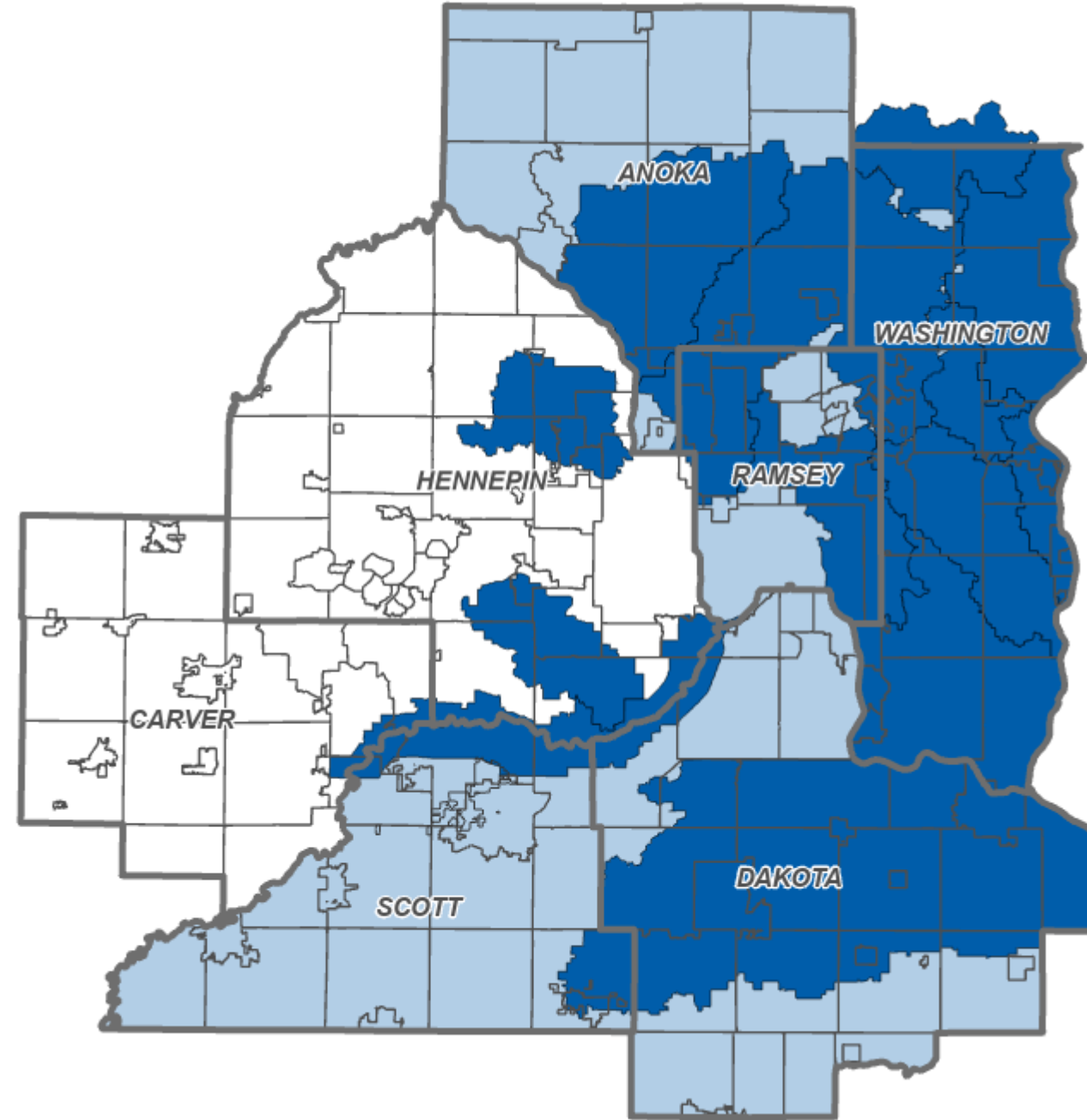
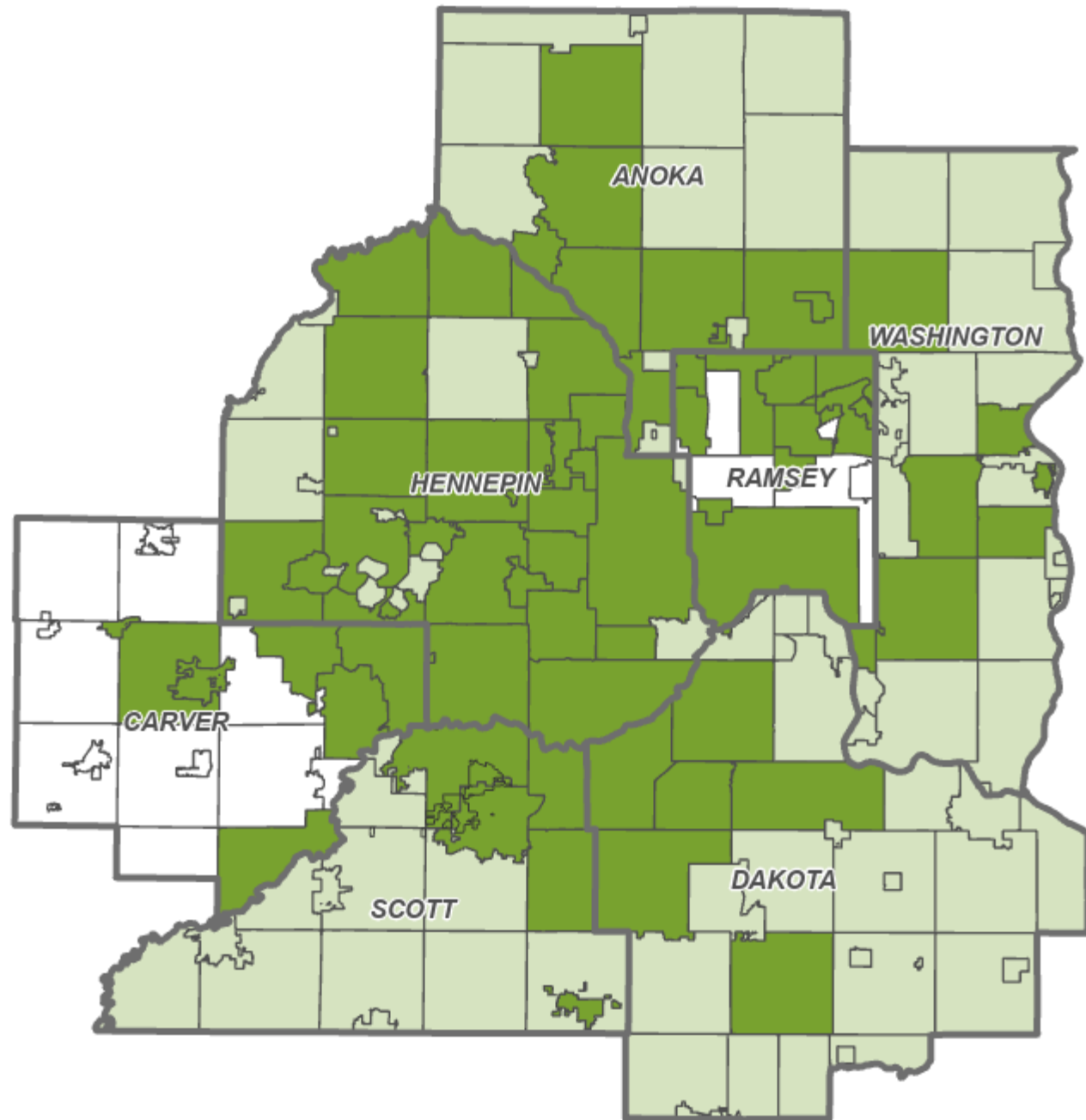
- Kickoff workshop to co-design approach with local partners
- Worked through relationships for invitations
- Hosted 2-3 workshops in each subregion
 - Brief presentation for grounding
 - Bulk of workshops spent in small group conversation
 - Participants took own notes on generative discussions
- Final, culminating workshop for all subregions

Who contributed ideas?

- Overall, around 150 people participated
- 23 engagements over 7 months
- 76 cities and townships represented
- 44 non-community organizations represented:
 - 14 watershed organizations
 - 12 county and county soil water conservation districts
 - 5 state agencies
 - 5 consulting firms
 - 3 private large-volume water users
 - 3 nonprofits/advocacy groups
 - 1 community advisory group member (Washington County Groundwater Plan)
 - 1 tribe
- Included updates to CONDAC, Water Utility Council, and MDH staff working on the Minnesota Drinking Water Plan



Who contributed ideas in subregional group workshops (fall and winter 2023-2024)?



Similarities and differences in focus areas by subregion

Priority focus area	West	Northwest	Northeast	East	Southeast	Southwest	Central
Water quantity	◆	◆	◆	◆	◆	◆	◆
Water quality	◆	◆	◆	◆	◆		◆
Coordination and collaboration*	◆	◆	◆	◆	*	◆	*
Growth and demand	◆	◆	◆		◆	*	◆
Asset management	◆	◆			◆		◆
Changing behaviors and norms*	*	*	◆	*	*	◆	◆
Data and tools	◆			*		◆	◆
Workforce*		◆	*	*	◆		◆
Funding*	*	*	◆	*	*	*	*
Climate change*	◆	*	*	*	*		
Affordability	*						◆

◆ = Priority focus area

* = Incorporated into multiple focus areas as an "implementation consideration"

How has this helped shape the WPP?



Many ways!

- Connection to nearly every policy—reflection of integrated approach
- Addition of the “workforce” policy
- Clarification of language to ensure inclusion/reflection of MAWSAC, TAC, and subregional input
 - Narrative
 - Objectives
 - Actions
- New actions

Connecting regional goals, the WPP, the MWSP, and local water supply plans

Regional Goal

We lead on addressing climate change

Water Policy Plan

Objective

Create climate-resilient water sources, ecosystems, and water infrastructure

Policy

Water stewardship and sustainability

Action

Support programs that target water and energy conservation practices and implement efficient water and energy use

Metro Area Water Supply Plan (*Regional Implementation & Technical Assistance*)

Regional approach

Convene partners to advocate for expanded water use efficiency grant funding across the region

Subregional approach

Identify most cost-effective actions for conservation and develop grant programs to incentivize adoption (ex: Northeast)

Local Water Supply Plan and/or Wellhead Protection Plan (*Local Implementation*)

Local plan content

Address water conservation and supply and demand reduction measures

Dashboard Measures

Water use over time (region, subregion, local)

Gallery Walk



Council staff have gathered a lot of input on draft objectives, policies and actions.

- **What resonates?**
- **What is missing?**

Focus on content for the policy statement, outcomes, and actions.

Provide feedback on sticky notes

Breakout discussion

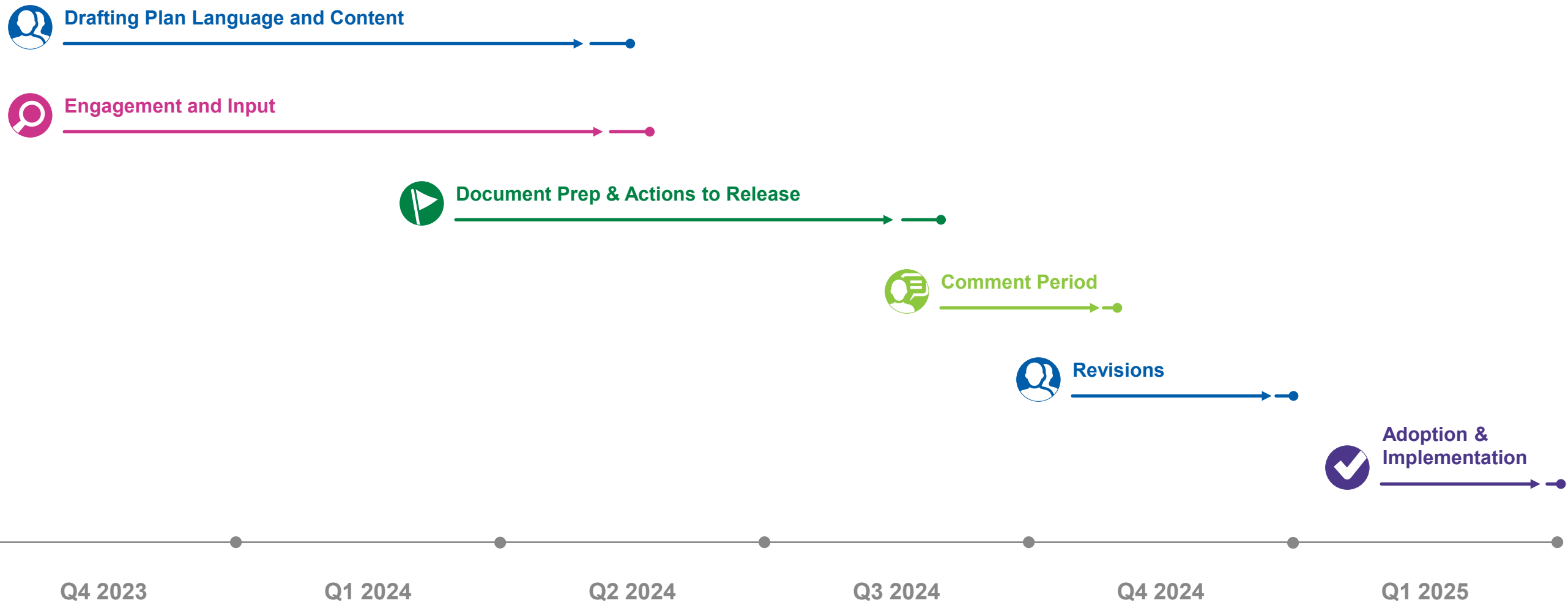


- **What are your first impressions?**
- **Are we on the right path?**
- **Should we modify the policies?**
- **Did we miss an action?**

Focus on content for the policy statement, outcomes, and actions.

Provide feedback on sticky notes

WPP Timeline



Thank you

Jen Kostrzewski

Assistant Manager, Water Resources

Jennifer.Kostrzewski@metc.state.mn.us

Emily Schon

Principal Engineer, Wastewater
Planning and Community Programs

Emily.Schon@metc.state.mn.us

Steve Christopher

Environmental Analyst, Water Resources

Steve.Christopher@metc.state.mn.us

Jen Kader

Senior Planner, Water Resources

Jen.Kader@metc.state.mn.us

