



# 2050 Transportation Policy Plan Development



June 2022

2050 TPP Advisory Work Group

# 2050 Planning Council-wide

## Project Overview

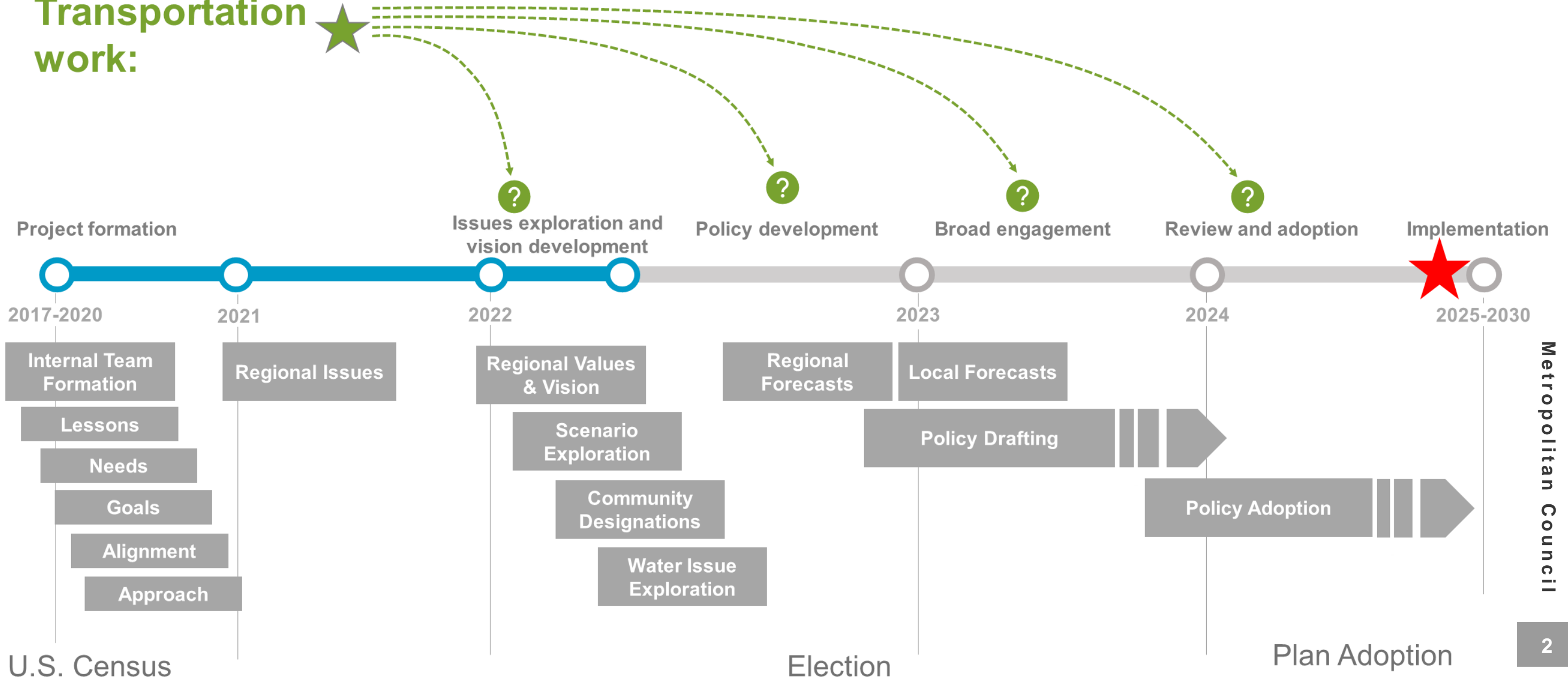
- Transportation Policy Plan (TPP) is one part of Council-wide planning efforts for multiple systems and policy areas
- Policy plans are developed in coordination with regional development guide, which is led by Community Development Division



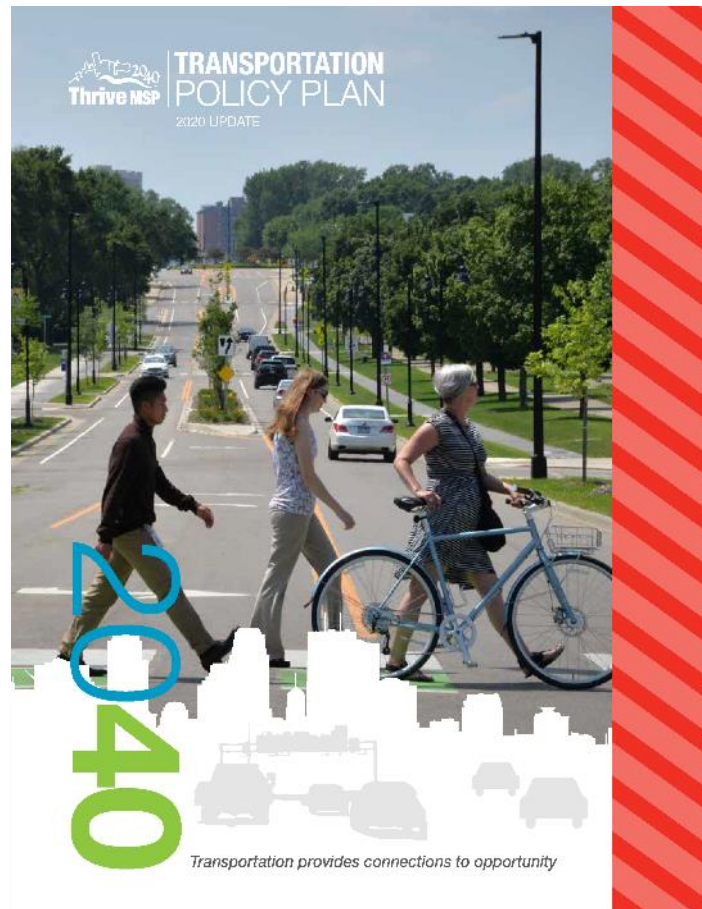
# Path toward 2050 Plan

Regional Development Guide, System Plans, and Policy Plans

## Transportation work:



# Transportation Policy Plan Planning Cycle



## Work Program Carries 2040 TPP and Informs 2050 TPP

### Example Completed

- Mobility Hub Planning Guide
- Highway Mobility Study

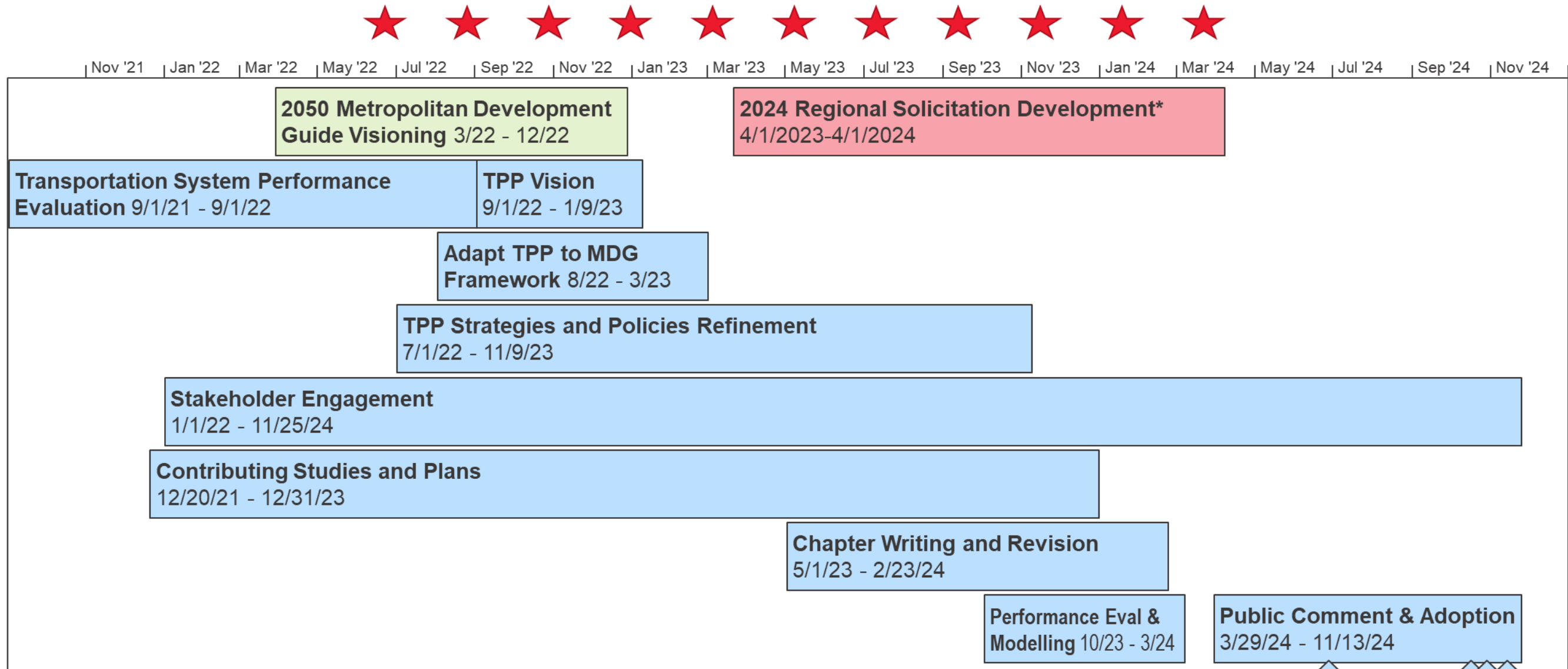
### Example Ongoing

- TDM Study
- Equity Evaluation of Transportation Investments
- Transportation and Climate Change Multimodal Measures

## 2050 Transportation Policy Plan

- Goals and Objectives
- Policies and Strategies
- Investments
- Modeling
- Performance

# 2050 TPP Schedule

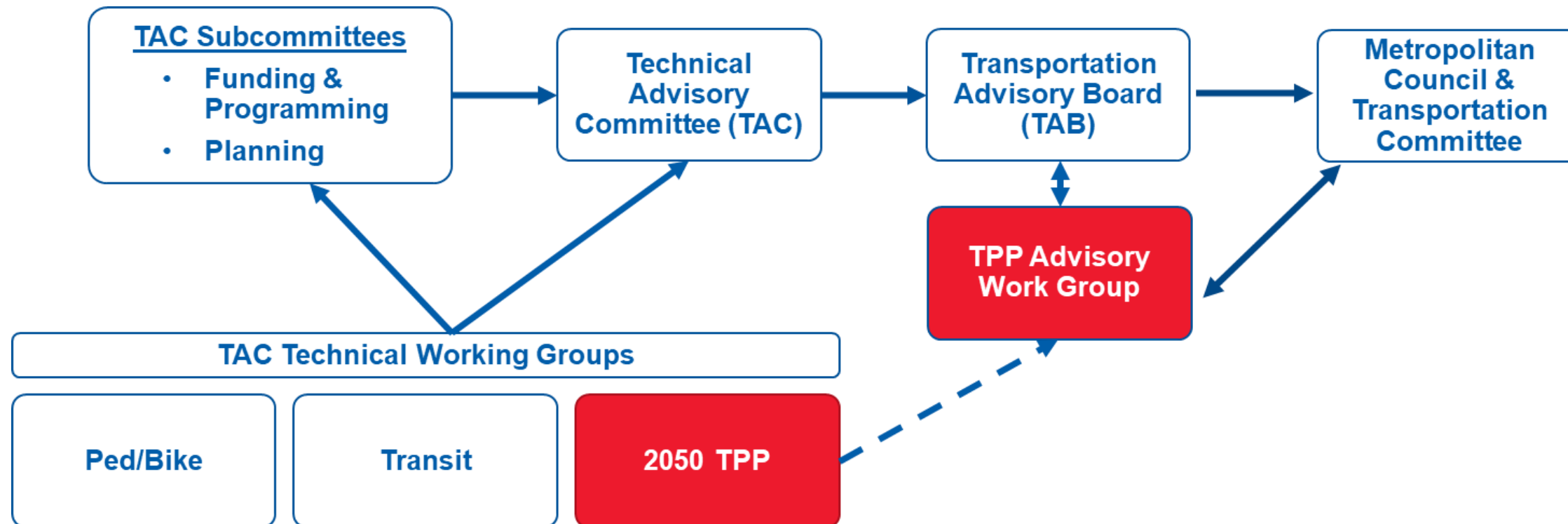


\*The next major Regional Solicitation update is scheduled for 2025 or 2026 and will not overlap the TPP schedule.

★ = 2050 TPP Advisory Work Group Meetings

Release for Public Comment 6/27/24  
 TAB Recommendation 10/16/24  
 Transp. Committee Recommendation 10/28/24  
 Council Adoption 11/13/24

# 2050 TPP Advisory Structure



# 2050 TPP Advisory Work Group Responsibilities



- Provide policy advise to Council staff on 2050 TPP content and coordination with the 2050 Metropolitan Development Guide
- Give direction on issues to discuss at the Technical Working Group
- Identify issues that should be brought to Met Council and TAB for further discussion
- Be prepared to engage on regional planning discussions in an in-depth way

# Potential Topics

## Transportation Issues to Address in the 2050 TPP Update

- Transportation response to climate change mitigation and adaptation, including electric vehicles
- Implementation challenges of addressing social equity in transportation decision making
- Need to identify and address the causes of growing safety and security issues on transportation system
- The impacts of the COVID-19 pandemic on travel behavior and land use and how investment plans should adapt accordingly
- Address how congestion management fits within the TPP's policy framework relative to other priorities
- Update or add funding direction for new or expanded IIJA federal programs, including those in the Regional Solicitation



# Regional Transportation and Climate Change Multimodal Measures

## What will the study do?

- Evaluate gaps and methodologies to estimate resulting life cycle greenhouse gas emissions from mobility type investments
- Includes criteria and projects in the Regional Solicitation, Transportation Improvement Program (TIP) and TPP
- Propose improved methodologies including data requirements, logic, formulas and software tools

## How will the study impact the 2050 TPP?

- Improve estimation of greenhouse gas emissions and the component parts in project evaluation processes
- Support improved discussions around climate mitigation

# VMT Reduction Mode Shift Modeling

## What will the study do?

- Estimate regional *mode shift potential*: the number and percentage of trips made by private motor vehicle that could be made by walking, biking or transit
- Evaluate the *who, what* and *where* of mode shift potential: by demographic groups, trip type, and community type
- Provide a baseline for the region and local planning groups when developing mode shift goals

## How will the study impact the 2050 TPP?

- Provides benchmark estimate when setting mode shift goals
- Provides baseline for evaluating ability of current transportation system and development to support transportation alternatives beyond personal vehicle
- Opens door for future work to use behavioral levers (incentives, TDM work) to affect mode share

# Regional Travel Demand Management Study

## What will the study do?

- Evaluate the existing TDM programs in the region and the state of the practice around the world
- Develop TDM goals for the region
- Create a list of recommended TDM strategies to help achieve the goals
- Create an action plan for new or improved TDM strategies to begin implementation
- Create a shared structure for TDM implementation when using shared resources (e.g., Regional Solicitation)

## How will the study impact the 2050 TPP?

- Consider development of a separate TDM chapter for the TPP that identifies specific actions, roles and responsibilities, funding priorities, and evaluation methods
- Contribute to strategies in other focus areas like Congestion Management Process, climate change mitigation, and land use policies

# Equity Evaluation of Regional Transportation Investments

## What will the study do?

- Develop and pilot an equity framework and tool for evaluating transportation investment processes and outcomes
- Work with a community-centered and led Equity Policy Group that will guide this project
- Recommend changes to improve equity in regional transportation investment processes, decision making, and outcomes

## How will the study impact the 2050 TPP?

- Provide input on goals, objectives, and strategies to better incorporate equity
- Identify actions and changes to regional planning and decision-making processes that will result in more equitable regional transportation investments
- Provide input on considering equity when prioritizing future investments

# Regional Safety Action Plan

## What will the study do?

- Create a high injury street identification by mode
- Proactive systemic analysis for fatal and serious injury crashes
- Identify potential safety countermeasures
- Make programmatic recommendations to better connect investments to safety goals
- Meet requirements of US Department of Transportation Comprehensive Safety Action Plan under their Safe Streets and Roads for All funding program

## How will the study impact the 2050 TPP?

- Consider development of a separate safety chapter for the 2050 TPP
- Alternatively, further develop safety within goals, objectives, strategies and modal chapters
- Results will be considered for implementation of the TPP (e.g., Regional Solicitation)

# Travel Behavior Impacts of COVID-19

## What will the work do?

- Continued monitoring of data relevant to understanding pandemic and post-pandemic travel including:
  - Freeway traffic volumes
  - Vehicle miles traveled
  - Amount, mode, and purpose of travel
  - Delivery, e-commerce behavior
  - Telecommuting behavior

## How will this work impact the 2050 TPP?

- Provide insight into ongoing and emerging trends
- Help identify places where fundamental discontinuities in travel behavior trends have policy or investment implications

<https://metro council.org/Transportation/Performance/Travel-Behavior-Inventory/2020-COVID-19-Surveys.aspx>

# Twin Cities Highway Mobility Needs Analysis

## What did the study do?

- Identified a highway mobility performance measure and target for the region
- Modeled a range of outcomes (job accessibility, freight impacts, transit delay) based on different highway mobility funding levels
- Completed a sensitivity analysis based on different future telework rates

## How will the study impact the 2050 TPP?

- The study was an input to MnDOT's Minnesota State Highway Investment Plan, which will identify future state funding for this investment area
- Incorporate study findings into the 2050 TPP's Highway Chapter and Performance Outcomes Chapter

# Transportation Attitudes and Needs Assessment

## What will the study do?

- Conduct qualitative research to:
  - Capture how constraints, values, needs, and relationships shape daily travel experiences
  - Define needs surrounding transportation infrastructure
- Examine commonalities and disparities in identified travel needs

## How will the study impact the 2050 TPP?

- Provide input on 2050 TPP goals and objectives
- Provide broad insight to policy development
- Provide a potentially strong equity lens to both of the above



# TPP Goals and Objectives Review, Engagement & Update

## What will the study do?

- Evaluate the current goals and objectives for what's still relevant, needs updating, or missing
- Convene stakeholder groups to discuss what the region wants for 2050 TPP goals and objectives
- Produce working drafts of the 2050 TPP planning framework, building off the 2050 Development Guide

## How will the study impact the 2050 TPP?

- Will provide engagement and language this is the basis for direct inclusion in the 2050 TPP
- Goals and/or objectives will provide structure and policy guidance for actions, roles, measures and investments in the 2050 TPP



# Contacts

**Cole Hiniker**

Multimodal Planning Manager

2050 TPP Project Manager

[cole.hiniker@metc.state.mn.us](mailto:cole.hiniker@metc.state.mn.us)

