



Aquifer Injection and Lake Augmentation – Update - Study 6

Work Group Meeting, White Bear Lake Area Comprehensive Plan

Christopher Larson, PE, SEH

October 21, 2025



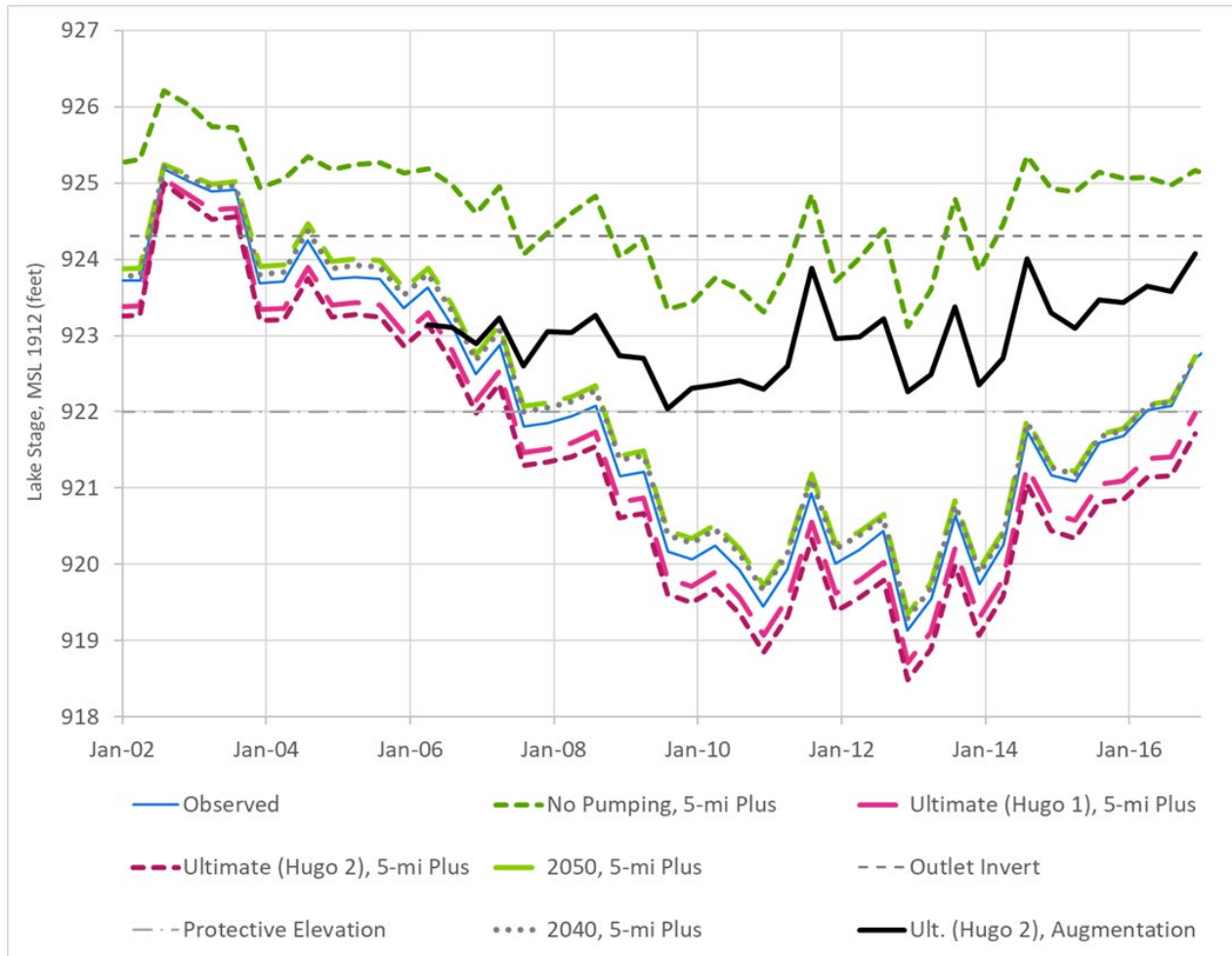
Building a Better World for All of Us®

Background

- Study 6 initially looked at augmenting White Bear Lake with current wastewater volumes, but future water use scenarios
- Updated memo evaluates:
 - Augment 2 MGD under existing water use scenario
 - Augment 3.8 MGD under existing water use scenario
 - Augment 4 MGD under ultimate Hugo 2 water use scenario

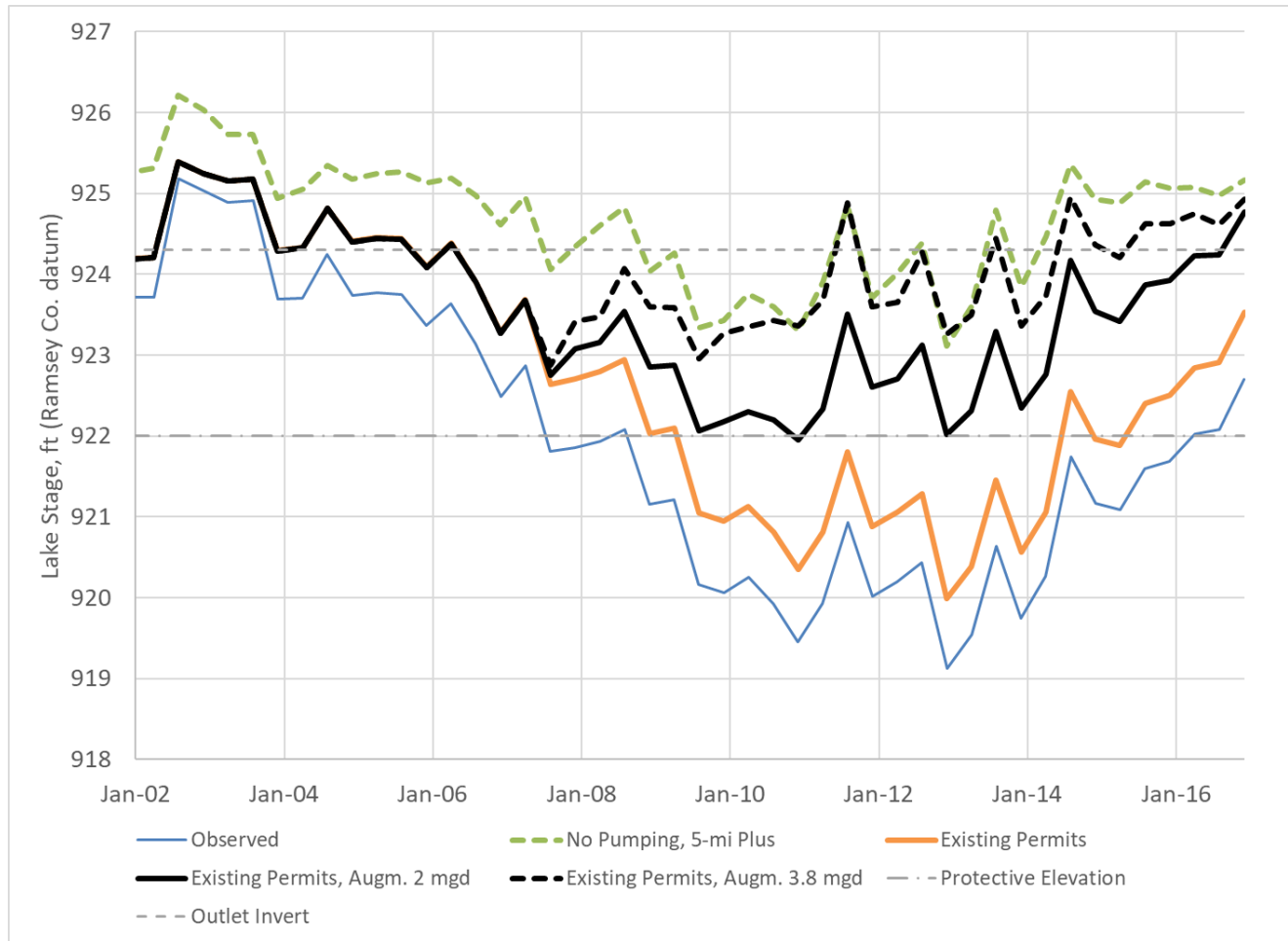


Augmentation – Ultimate Water Use Scenario



- Ultimate (Hugo 2), Augmentation
- Up to 4 million gallons per day – *cannot currently do this much with reuse water*
- Augmenting during open water season

Augmentation – Existing Water Use Scenario



- Existing Use Scenario
- 2 MGD and 3.8 MGD augmentation modeled
- Augmenting during open water season

Questions?

