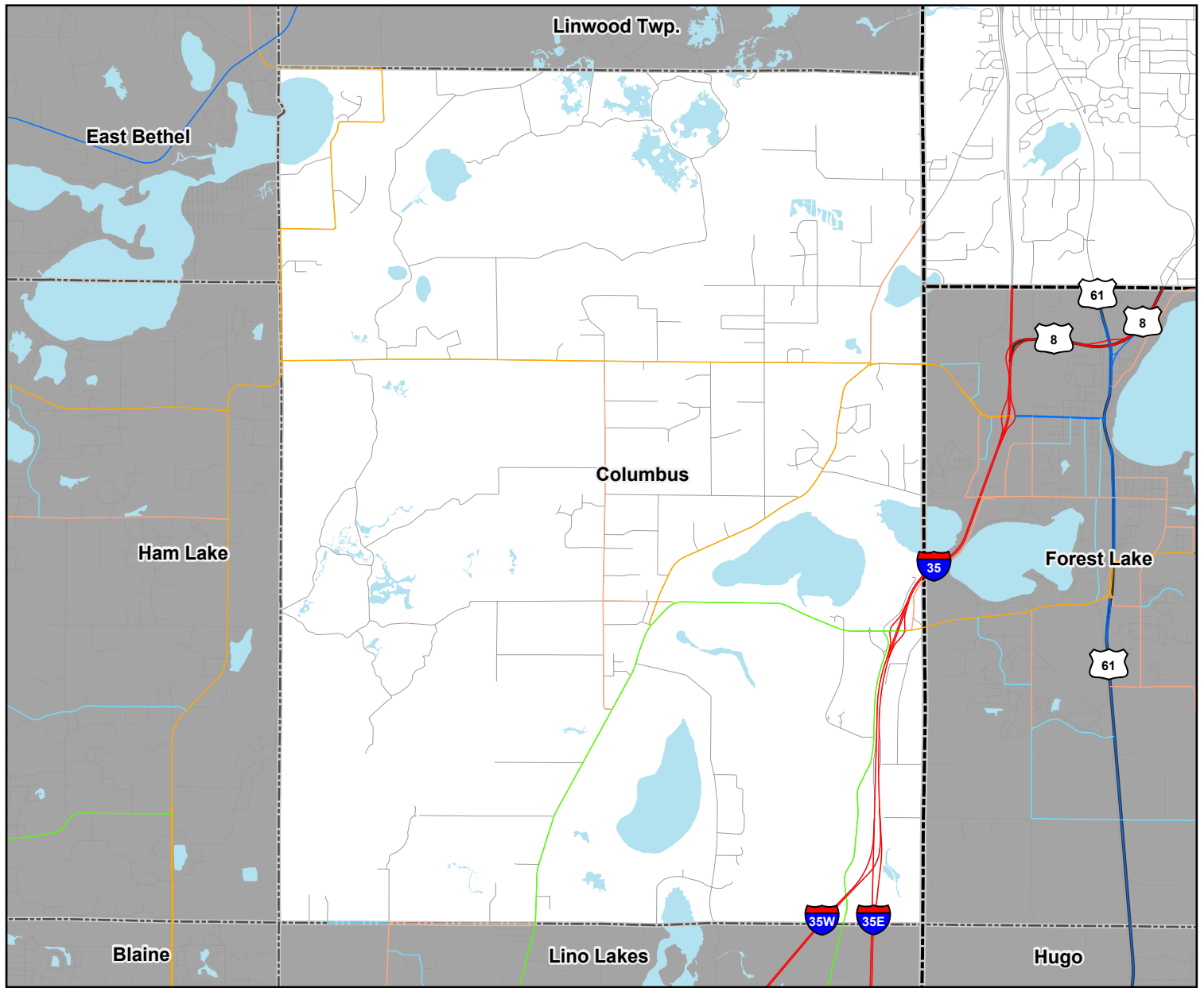


Regional Transportation System - Functional Class Roads

City of Columbus, Anoka County



Functional Class Roads

- Principal Arterial
- A Minor Augmentor
- A Minor Reliever
- A Minor Expander
- A Minor Connector
- Other Arterial
- Major Collector
- Minor Collector

- Local Roads
- County Boundaries
- City and Township Boundaries
- Lakes and Rivers