

## COMPREHENSIVE PLAN/MISSISSIPPI RIVER CORRIDOR CRITICAL AREA (MRCCA) CHAPTER REVIEW AND APPROVAL PROCESS SUMMARY FOR LOCAL GOVERNMENTS

### Overview

- MRCCA plans are a chapter in the comprehensive plan.
- All MRCCA plan submittals go to the Metropolitan Council, just like all other comprehensive plan submittals.
- Most MRCCA plan procedural communications go to/from the Metropolitan Council. **Exceptions in bold below.**

### Preliminary Review

- Submit by September 2018.
- Opportunity for the LGU to get informal comments from the Metropolitan Council/DNR on draft plan – missing and incomplete items.
- Metropolitan Council sends preliminary review summary to the LGU.

### Adjacent and Affected Jurisdiction Review

- MRCCA plans must be submitted to the National Park Service (NPS) and any other jurisdiction owning and operating land within the MRCCA to review for 60 days prior to submitting the plan to the Metropolitan Council.
- If the DNR owns or manages any land in your community within the MRCCA, please send your plan for “adjacent and affected review” to Matt Bauman at the DNR at [matthew.bauman@state.mn.us](mailto:matthew.bauman@state.mn.us). He will route it appropriately for comments.

### Official Plan Submittal – Completeness Review

- A public hearing is required to consider the plan and decision to submit the plan to the Metropolitan Council for review. LGUs must send a public hearing notice to the DNR, NPS and adjoining LGUs at least 10-days before the public hearing.
- Submit by December 31, 2018.
- Metropolitan Council determines if the plan is complete within 15 business days of plan submittal.
- Metropolitan Council sends communications on submittal status.

### Official Review of MRCCA Plan

- Review completed within 90 calendar days from submittal, if the plan is complete:
  - Metropolitan Council reviews MRCCA plan and makes recommendations to the DNR within 45 days.
  - DNR reviews plan, considers the Metropolitan Council recommendations, and makes approval determination within 45 days of receiving recommendations from the Metropolitan Council.
- **DNR communicates directly with the LGU on approval determination. Approval of the MRCCA plan will be conditional upon the Metropolitan Council approval and final action on the entire comprehensive plan. If not approved, DNR explains needed modifications and returns the plan to the LGU.**
- Metropolitan Council has 120 calendar days to complete review of the entire comprehensive plan and take action.

### Extensions for Initial MRCCA Plan Submittal

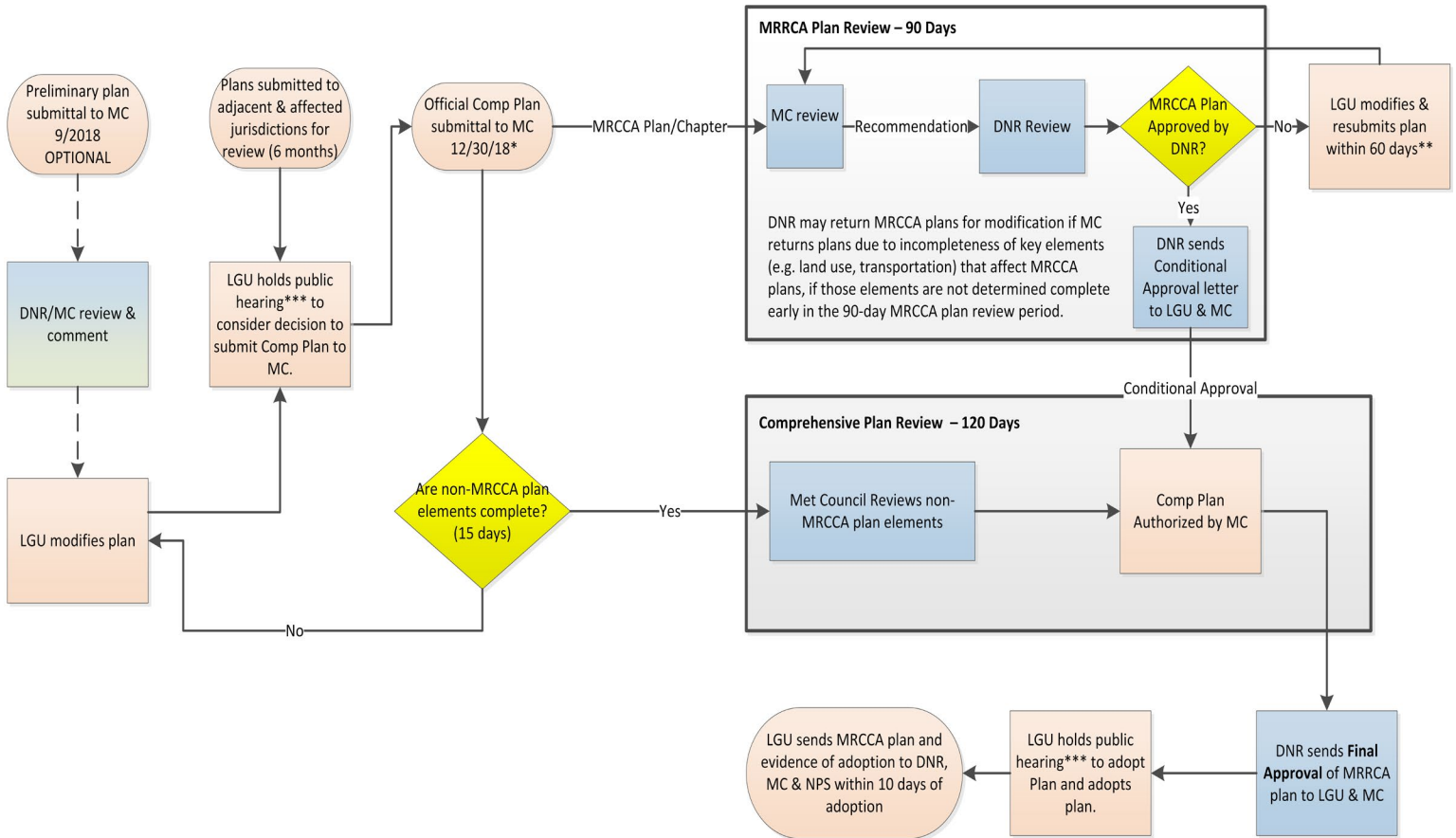
- Extension requests are due to the Metropolitan Council by May 31, 2018.
- DNR makes request determination (yes/no) and communicates through the Metropolitan Council.
- Requests require explanation, good faith effort, and schedule for completion.
- Comprehensive plans are not complete until all chapters (including MRCCA, water resources, etc.) are complete.

### MRCCA Plans Returned for Modification

- LGU submits modified plan to the Metropolitan Council within 60 days. However, there is an opportunity for **LGUs to request a meeting directly with the DNR** to discuss non-approvals. In this case, the 60 days start from the date of this meeting.
- Extensions are available for MRCCA plans returned for modification. LGU makes extension request to the Metropolitan Council. However, comprehensive plan is not complete until MRCCA chapter is complete.

## MRCCA Plan Adoption

- LGU adopts plan within 60 days of the Metropolitan Council approval of the entire comprehensive plan (with prior DNR conditional approval of MRCCA plan).
- A public hearing is required to adopt plans. LGUs must send a public hearing notice to the DNR, NPS and adjoining LGUs at least 10 days before the public hearing.
- LGU sends adopted plan and evidence of adoption to DNR, Metropolitan Council, and National Park Service within 10 days of adoption.



### Notes:

- MRCCA plans are a chapter in the comprehensive plan.
- All MRCCA plan submittals go to the Met Council.
- Most LGU MRCCA plan procedural communications go to/from Met Council.
- All days are calendar days unless otherwise noted
- Comprehensive plans cannot be adopted by LGUs until all jurisdictions (e.g. DNR, watershed) have approved their respective plan elements (e.g. MRCCA, Water Resources).
- The DNR will conditionally approve MRCCA plans within 90 days of MRCCA plan submittal and provide final MRCCA plan approval when the MC authorizes the Comprehensive Plan - within 120 days of a complete plan submittal.
- For MRCCA Plans, adjacent and affected jurisdictions include the National Park Service (NPS) and any other jurisdiction that owns and/or operates land and facilities within the MRCCA.

(\*) Indicates that extensions are available.

(\*\*) Indicates that any meeting with DNR delays start of 60 days. Extensions are also available.

(\*\*\*) LGU gives 10-day notice of public hearings to DNR, NPS & adjoining LGUs.

Content prepared by:



January 2019

LOCAL PLANNING  
HANDBOOK

Metropolitan Council  
390 Robert Street North  
Saint Paul, MN 55101

[metrocouncil.org](http://metrocouncil.org)

Main: 651.602.1000  
TTY: 651.291.0904  
Public Information: 651.602.1500  
[public.info@metc.state.mn.us](mailto:public.info@metc.state.mn.us)

