



LOCAL WATER SUPPLY PLAN PROCESS

LOCAL PLANNING HANDBOOK

The Minnesota Department of Natural Resources (DNR) and the Metropolitan Council (Council) have developed a local water supply template to meet the water supply requirements of both agencies. Your community's completion of the template also fulfills the requirements by the Minnesota Department of Health to address contingency planning for water supply interruption in source water protection plans.

KEY ELEMENTS

The Council's review of local water supply plans focuses on key elements of the Master Water Supply Plan including:

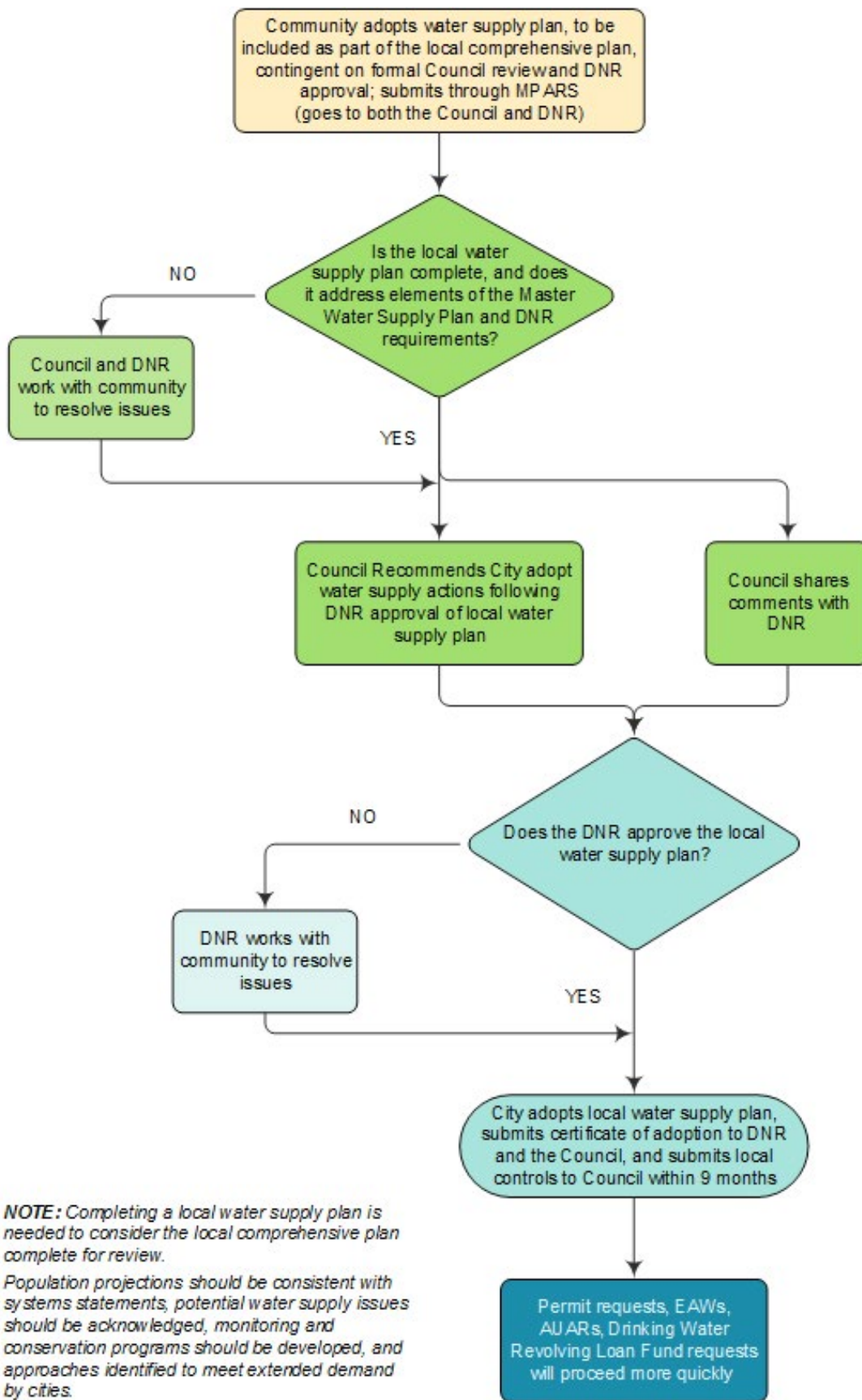
- **Extended water demand projections.** Extended water demand projections should be consistent with the population forecasts in the community's System Statement. Assumptions of water conservation impacts on demand projections need to be supported by information provided in the local water supply plan template.
- **Potential water supply issues.** The discussion of resource sustainability should acknowledge the potential water supply issues identified on the community water supply profile of the Master Water Supply Plan, and how any local studies have verified or refined understanding about the scope of the issue. The information in each water supply profile is generally based on regional analyses, and provides a useful starting place for local planning.
- **Monitoring and ongoing evaluation.** The local water supply plan should include information about existing and planned resource monitoring and evaluation needed to understand the local effects of community water use and to provide early warning of unidentified or developing water supply issues.
- **Water conservation.** Water conservation practices can effectively reduce the demand placed upon groundwater and surface water sources as well as municipal water supply systems. The local water supply plan should provide a detailed water conservation plan, which fulfills the new law requiring demand reduction measures and may also inform extended water demand projections.
- **Proposed approaches to meet extended water demand projections.** The local water supply plan should include information about the adequacy of the existing water supply system to meet demand through 2040, as well as proposed approaches to meet water demand through 2040, if the current system is inadequate to do so.
 1. Using new (currently not in use) approaches with a lower likelihood of causing well interference, aquifer or surface water impacts, or added treatment costs due to contamination.
 2. Expanded conservation, interconnections with neighbors, groundwater, surface water, reclaimed stormwater, and reclaimed wastewater.
 3. Continuing to use existing groundwater or surface water sources, supported by monitoring and evaluation to provide warning of developing problems and a back-up plan.

THE COUNCIL'S ROLE

The Council will also support the work outlined in the local water supply plan template through public outreach to increase knowledge by the general public about water supply issues, partnering on technical studies, promoting and supporting water conservation, investigating reuse of treated wastewater, and supporting investments in water supply. More detailed guidance on how local plans can incorporate water supply considerations is provided in the Council's Local Planning Handbook.

REVIEW PROCESS

The Council and the DNR cooperate in the process to review local water supply plans. The diagram on the next page shows the decision process review of water supply plans, including the benefits of completing and approving a local water supply plan.



September 2015