



---

## **Livability for All**

What We're Learning, Where We're Going

# Today's Agenda

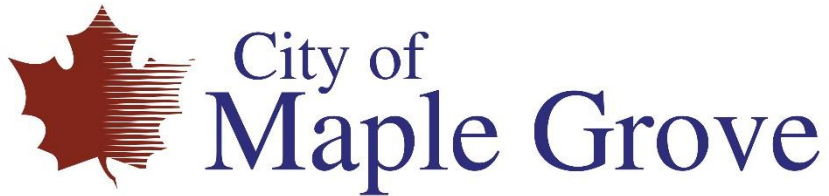
- **Welcome and Introductions**
- **Overview of Age-Friendly Maple Grove: What, Why, Who, & How?**
- **Assessment Findings: What We've Learned About Growing Older in Maple Grove**
- **What's Next for Age-Friendly Maple Grove?**
- **How You Can Help**
- **Group Discussion**

# Age-Friendly Maple Grove is...

- A city-based, community driven initiative to make Maple Grove a better place to grow older
- Led by a committee cross-sector representatives and community volunteers
- A member of the WHO/AARP Global Network of Age-Friendly Cities
- About the entire community, not a “senior program”

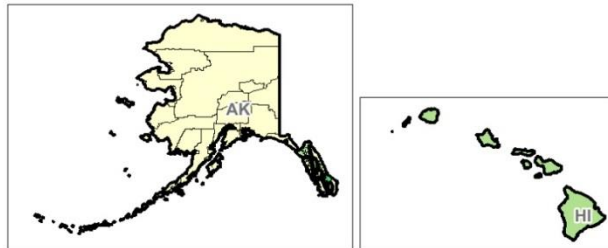
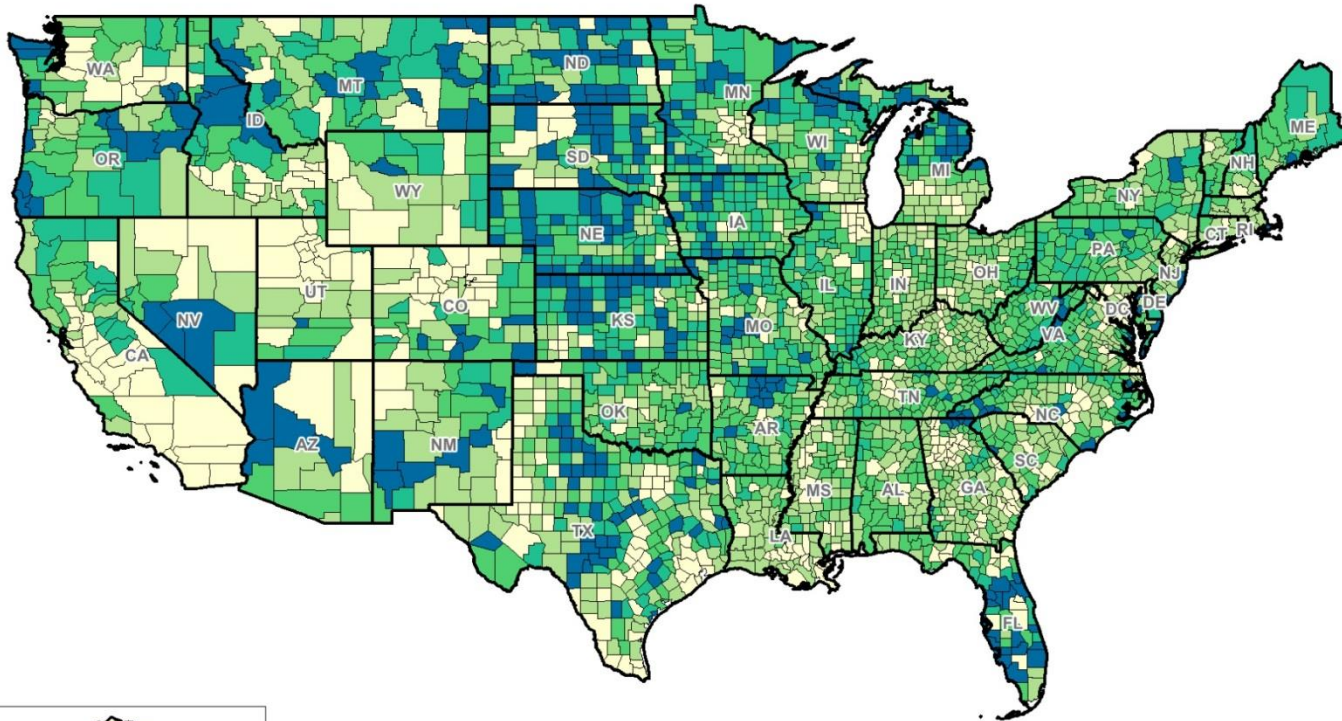


# AF-MG Supporters



# AMERICA IS AGING

## Percent of Population 65+ in 2010



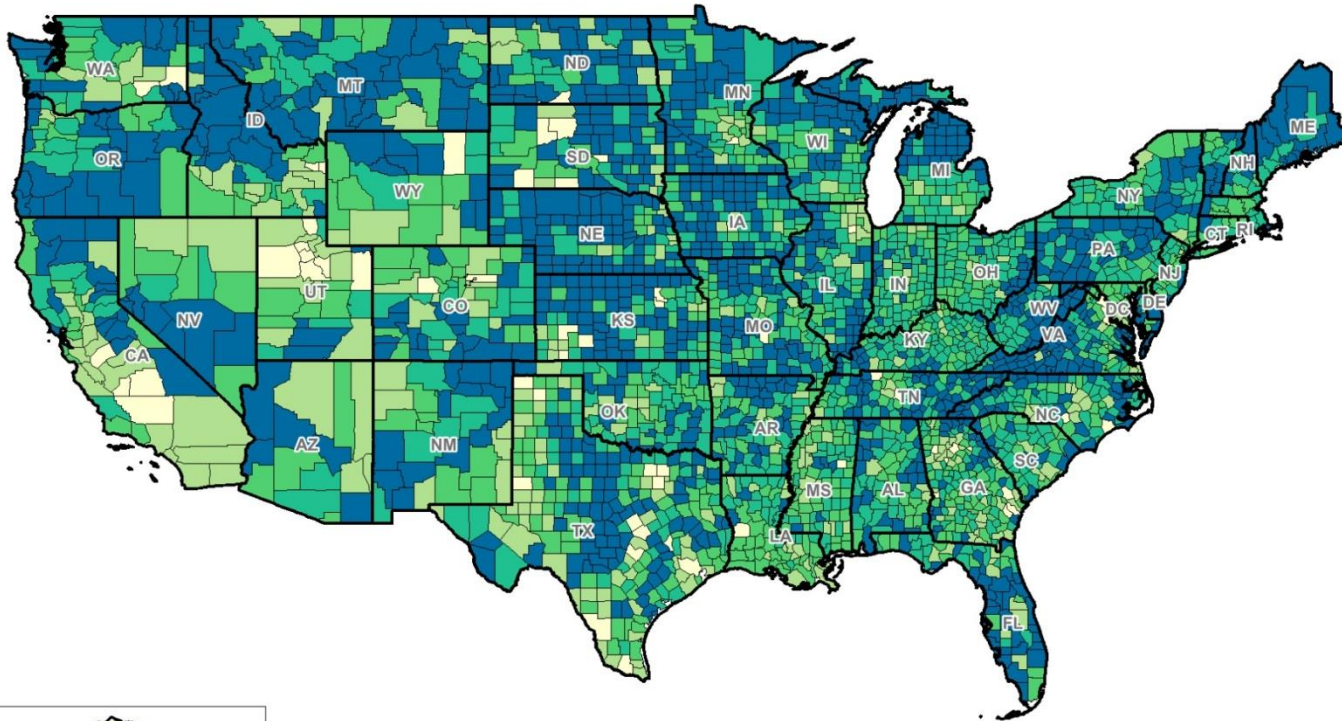
Percent Population Age 65+ 2010

21% or more	(349)
18% to 21%	(483)
15% to 18%	(917)
12% to 15%	(888)
12% or less	(506)

Source: U.S. Bureau of the Census, 2010 Census.

# AMERICA IS AGING

## Percent of Population 65+ in 2030



Percent Population Age 65+ 2030

21% or more	(1161)
18% to 21%	(920)
15% to 18%	(643)
12% to 15%	(338)
12% or less	(81)

## Maple Grove: Older adult population on the rise

Percent of older adults in Maple Grove population			
Age	2000	2010	2016
55-64	6.6%	12.8%	14.6%
65-74	2.6%	4.8%	7.3%
75-84	1.3%	1.9%	2.2%
85+	0.2%	0.6%	0.7%
<b>Total 55 and above:</b>	<b>10.7%</b>	<b>20.1%</b>	<b>24.8%</b>

Sources: 2000: US Census Bureau American Fact Finder, Profile of Demographic Characteristics: 2000 (<https://factfinder.census.gov/faces/tableservices/jsf/pages/productview.xhtml?src=CF>)

2010: US Census Bureau American Fact Finder, Profile of Demographic Characteristics: 2010 (<https://factfinder.census.gov/faces/tableservices/jsf/pages/productview.xhtml?src=CF>)

2016: City of Maple Grove Demographic Data

# Why Become an Age-Friendly City?

“The age-friendly community movement is necessary because **communities were and continue to be built without integrating the needs of people of all ages and abilities** into decision making.

[C]ities and counties were developed without the choices needed to support an aging population and certainly not the aging of the largest cohort to be born on the planet.

**[A]ge-friendly must be defined not as a new program or a new trend in service delivery but as a fundamental rethinking of how we live together.”**

*-Kathryn Lawler, “Go Big or Go Home,” Public Policy Aging Report, 2015*

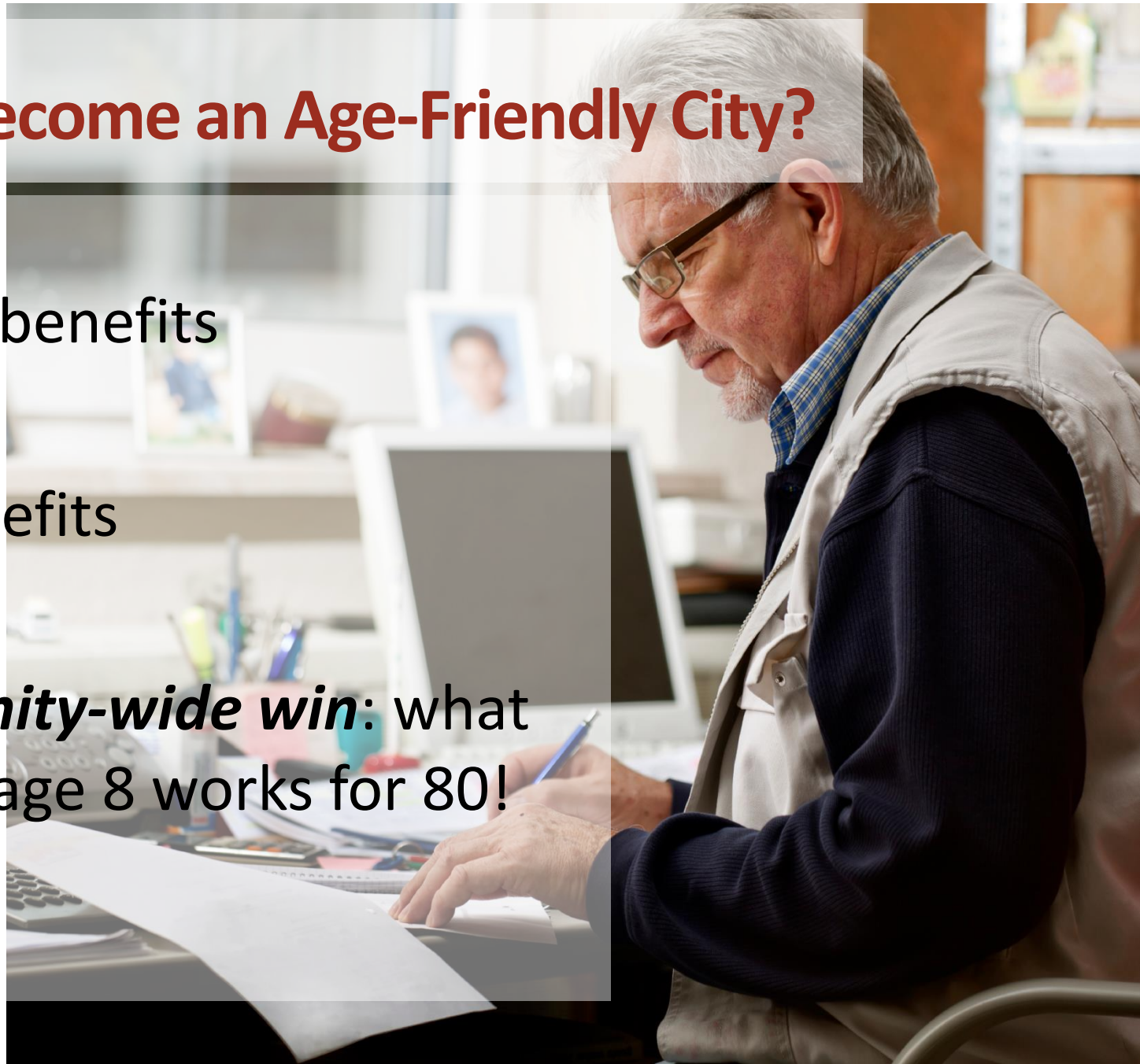


# *Why* become an Age-Friendly City?

*Economic* benefits

*Social* benefits

*A community-wide win:* what works for age 8 works for 80!



# WHO 8 Domains of Livability

**HOUSING**

**OUTDOOR SPACES  
& BUILDINGS**

**TRANSPORTATION**

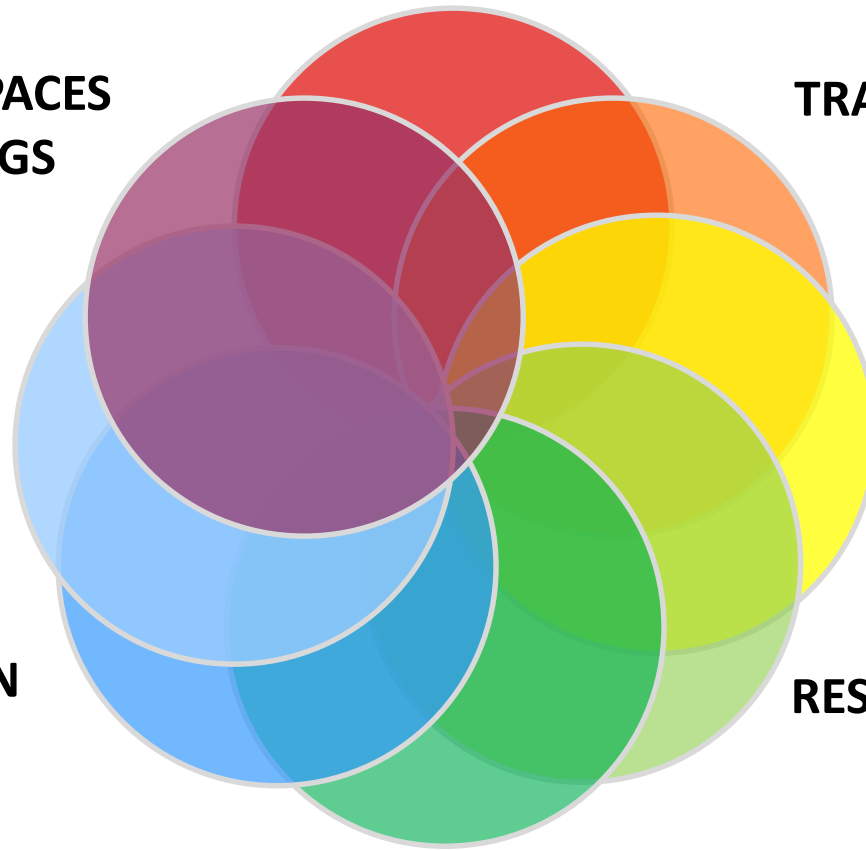
**COMMUNITY &  
HEALTH SERVICES**

**SOCIAL  
PARTICIPATION**

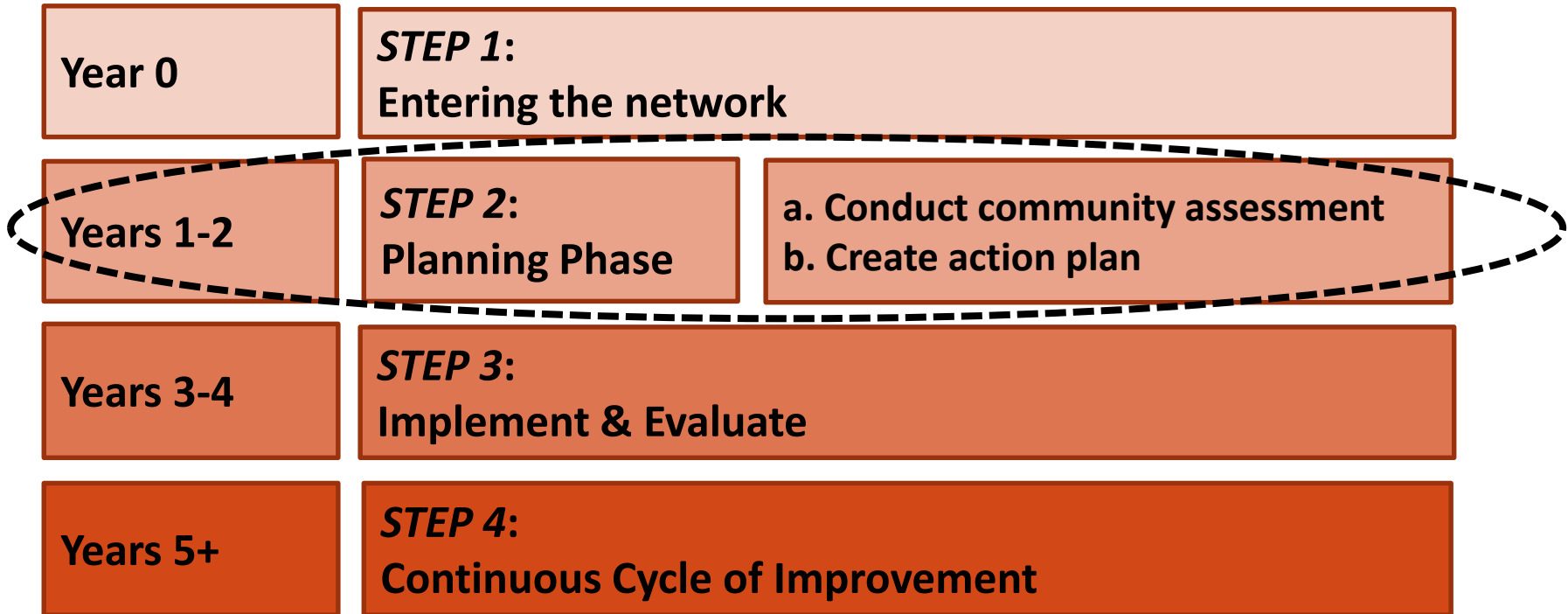
**COMMUNICATION  
& INFORMATION**

**RESPECT & SOCIAL  
INCLUSION**

**CIVIC PARTICIPATION &  
EMPLOYMENT**



# Age-Friendly Process: 5 Years, 4 Phases



# AF-MG Assessment: 5-Part Strategy

## How We Gathered Community Input

1. Informal Input

2. Focus Groups

3. Service Providers

4. AARP Phone Survey

5. City Dept. Self-Assessments

# Challenges in Assessment

- Not enough representation from isolated older adults living in own home.
- Difficult to engage ethnically/culturally diverse people.
- Additional input needed across the age spectrum.



# Overview Of Our Findings:

**People like living in Maple Grove.** They appreciate its safety, beauty, locally available healthcare services, parks and walking trails and friendly people.



## Challenges

#1: Transportation

#2: Housing



# Outdoor Spaces & Buildings

## Buildings

- Many doors are too heavy
- More seating in large stores
- Some entrances & exits far from each other, handicapped parking not central/easily accessed
- Additional curb cuts needed in long stretches of sidewalks (at shopping)

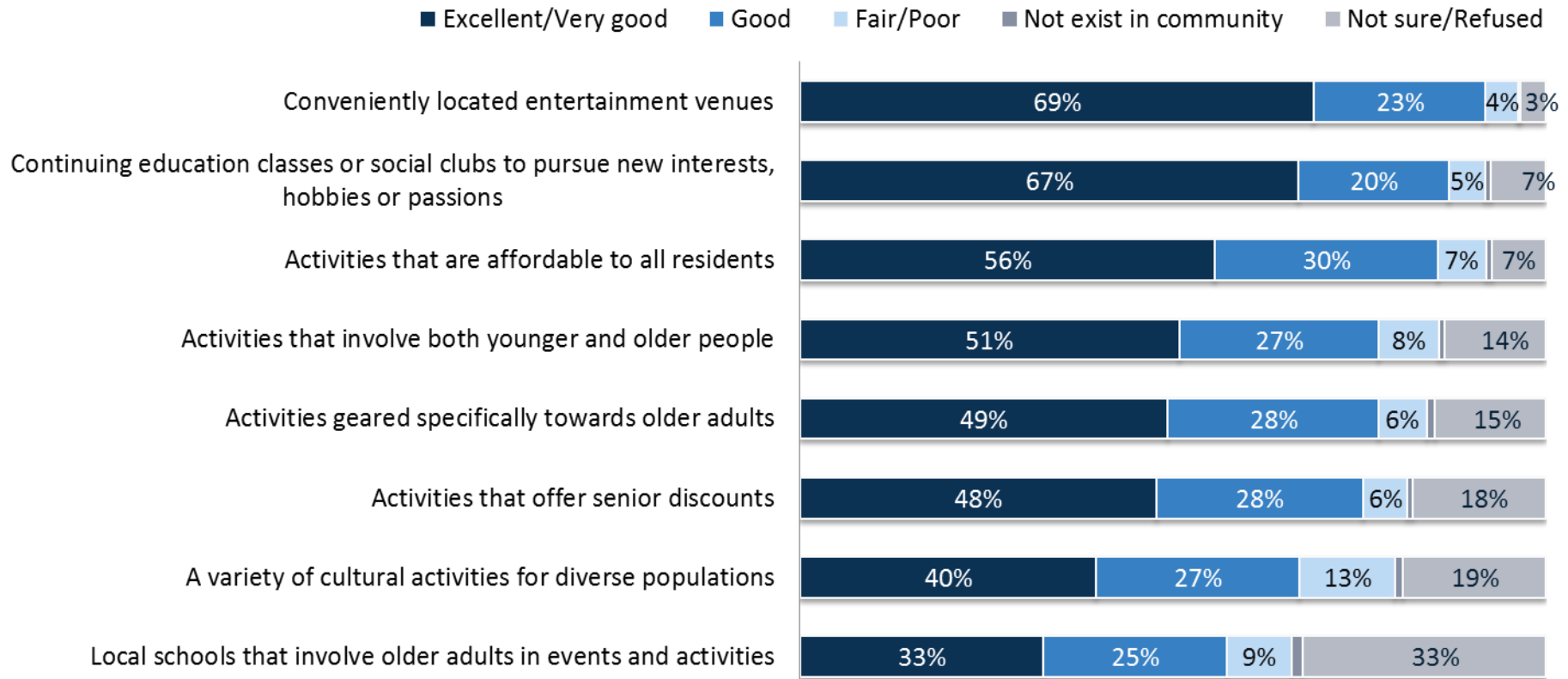


## Parks & Public Spaces

- Would like indoor place for winter walking.
- Availability of neighborhood space/parks for quiet/scenic use. (Benches, walking, contemplative opportunities)

# Social Participation

Maple Grove residents age 50+ say their community has an excellent to good variety of affordable social activities at convenient locations.



Question: Would you rate your community as excellent, very good, good, fair, or poor on having the following?

Source: 2016 AARP Age-Friendly Community Survey of City of Maple Grove Residents Age 50+



# Social Participation *(cont'd)*

- **Senior center** is valued.
- **Transportation** is a **barrier** to some social participation.
- **Cost** can be a barrier.
- **Senior housing** can provide social connection.



# Respect & Social Inclusion

- People generally feel respected and included
- Community events like Maple Grove Days and Farmers Market are supportive and inclusive
- Difficult for newcomers to socially connect, especially if not living in senior housing



# Civic Participation & Employment

- The majority of Maple Grove residents age 50+ rate their community positively on having access to a variety of volunteer activities.
- Half of Maple Grove residents age 50+ rate their community positively for having a range of flexible job opportunities for older residents.



# Communication & Information



**City of Maple Grove**  
Fall Newsletter  
**2017**

# CITY Focus

**Inside this issue**

- 4 Clean-up options
- 6 Farmers market
- 8 Fire chief retires
- 10 Domestic violence awareness
- 12 Community center 20-year celebration
- 16 Assessing update
- 17 Economic development update
- 20 55 forward programs
- 22 Ponds and wetlands

## Age-friendly Maple Grove: Creating a high quality of life for all ages

Community invited to learn more and provide input

Age-friendly Maple Grove is a city-sponsored, community-driven initiative to make Maple Grove a better place to grow older. The City of Maple Grove is part of the World Health Organization/AARP Global Network of Age-Friendly Cities. As a network member, the city commits to taking steps to become a better place for older adults using the program's framework as a guide.



In keeping with the World Health Organization's framework, age-friendly Maple Grove's first major phase of work was a community assessment of the needs and desires of older adults. The findings of the assessment have been presented to city council, city staff, and the citizens advisory committee. You are invited to hear and comment on the assessment findings on **Wednesday, September 27**, at either 2 p.m. or 7 p.m. at the Maple Grove Community



**WebTrac: Online Registration!**

Set up your account in just a few simple steps. Do it BEFORE registration dates to save time! (Google is the preferred browser.)

[webtrac.maplegrovern.gov](http://webtrac.maplegrovern.gov)

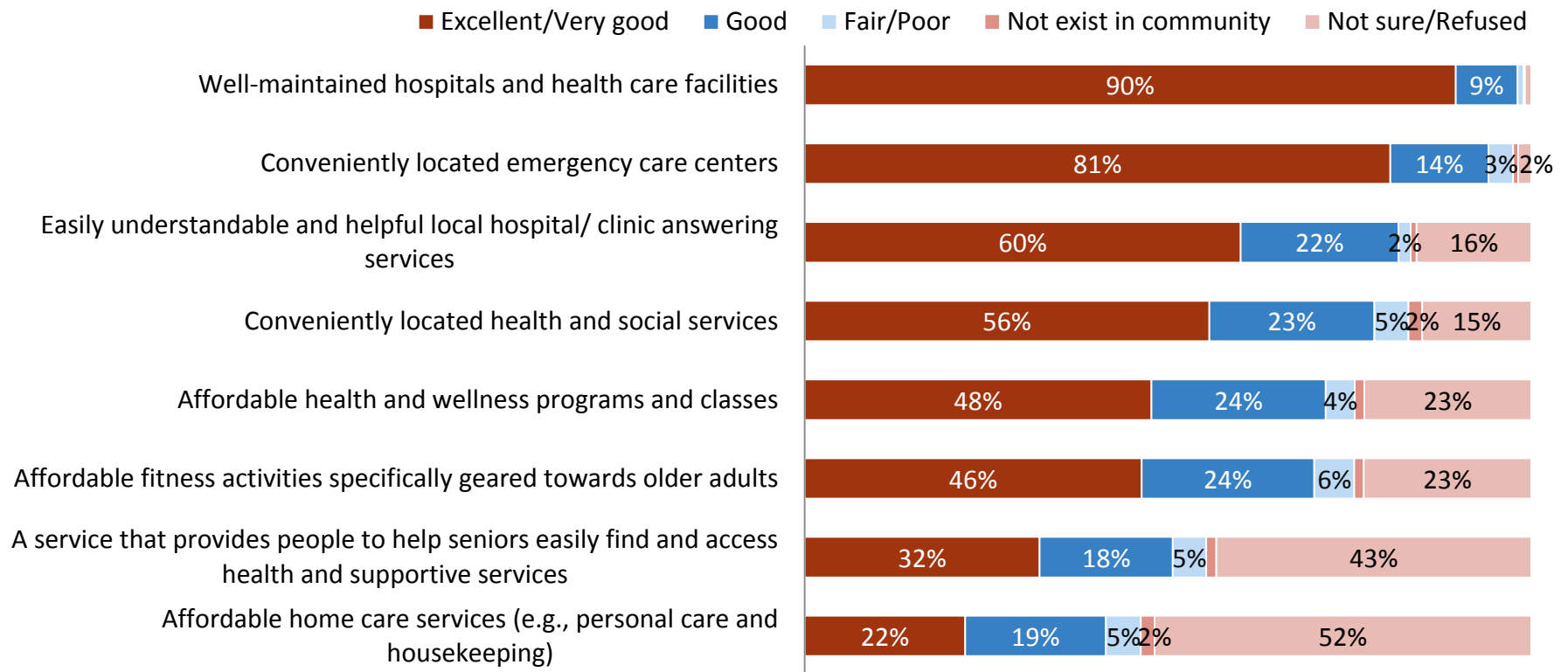
Create a login and password. Place a program into your wishlist now and then move it to your cart on registration day!

# Fall 2017

Seniors/55 Forward program registration starts on **Tuesday**, August 22 at 9:00 am.  
General program registration starts on **Wednesday**, August 23 at 9:00 am.

# Community and Health Services

The majority of Maple Grove residents age 50+ rate their community excellent to very good on having well-maintained and conveniently located health care facilities.



Question: Would you rate your community as excellent, very good, good, fair, or poor on having the following?

Source: 2016 AARP Age-Friendly Community Survey of City of Maple Grove Residents Age 50+

# Community and Health Services *(cont'd)*

*People want and need:*

- Help navigating the **complex healthcare** system (better “health literacy”)
- More **mental health** services
- Support for people with **dementia** and their caregivers
- Access to **nutritious food** and prepared meals
- Better **translation services** for non-English speakers
- More **affordable home care services**
- Help combating **isolation**
- More **preventative care**, not just sick care
- Affordable **chore services**
- More and better **delivery services** from grocery stores, restaurants, etc.



# Transportation

## Transit:

### More and better options are needed

- Existing options are limited. There are few choices and each has considerable limitations



## Walkability

- Need more and better sidewalks
- People don't feel safe at some intersections
- More benches on walking trails & in parks

## Driving & Parking

- Too much traffic congestion
- Traffic/street signs can be hard to read
- Need more handicapped parking
- A simple map of central MG would help



# Transportation (cont'd)

Most Maple Grove residents age 50+ drive themselves to get around their community.



Photo from iStock.com/diego\_cervo

**88%** drive themselves around  
**18%** have others drive them



Photo from iStock.com/Satoshi-K

**48%** walk  
**33%** ride a bike

**10%** use public transportation



Photo from iStock.com/kali9

**6%** take a taxi  
**4%** use a special transportation service



Photo from ScienceWorldReport.com

Question: How do you usually get around your community for things like shopping, visiting the doctor, running errands, or other things?

Source: 2016 AARP Age-Friendly Community Survey of City of Maple Grove Residents Age 50+





# Housing



The majority of Maple Grove residents age 50+ expect to stay in their home or community as they get older.

- More options needed – especially affordable
- Housing that includes services is too expensive for many
- Less “vertical living” / more single level
- Home modifications can allow people to remain at home
- Continuing to get more expensive

# What's Next?

- Share findings with community
- Gather further input
- Develop three-year action plan
- Implement action plan 2018 - 2020



# How Can You Help?

## Share your input

## Volunteer with Age-Friendly Maple Grove

- Attend monthly committee meetings
- Stay informed (join e-mail list)
- Engage in action plan implementation

## Spread the word





## Contact us!

**Kris Orluck**

Senior Coordinator, City of Maple Grove and  
Co-Chair of AF MG  
(763) 494-6514 | [korluck@maplegrovern.gov](mailto:korluck@maplegrovern.gov)

**Mark Carpenter, Co-Chair, AF-MG**

(612) 889-6557 | [vikesfan321@gmail.com](mailto:vikesfan321@gmail.com)

## More information on the Web

- **Age-Friendly Maple Grove**  
[maplegrovern.org/agefriendly](http://maplegrovern.org/agefriendly)
- **AARP Age-Friendly Communities:**  
[aarp.org/agefriendly](http://aarp.org/agefriendly)
- **AARP Livable Communities:**  
[aarp.org/livable](http://aarp.org/livable)
- **World Health Organization:**  
[who.int/ageing/en](http://who.int/ageing/en)