

Rice Creek Watershed District



Photo Credit: Ed Náter

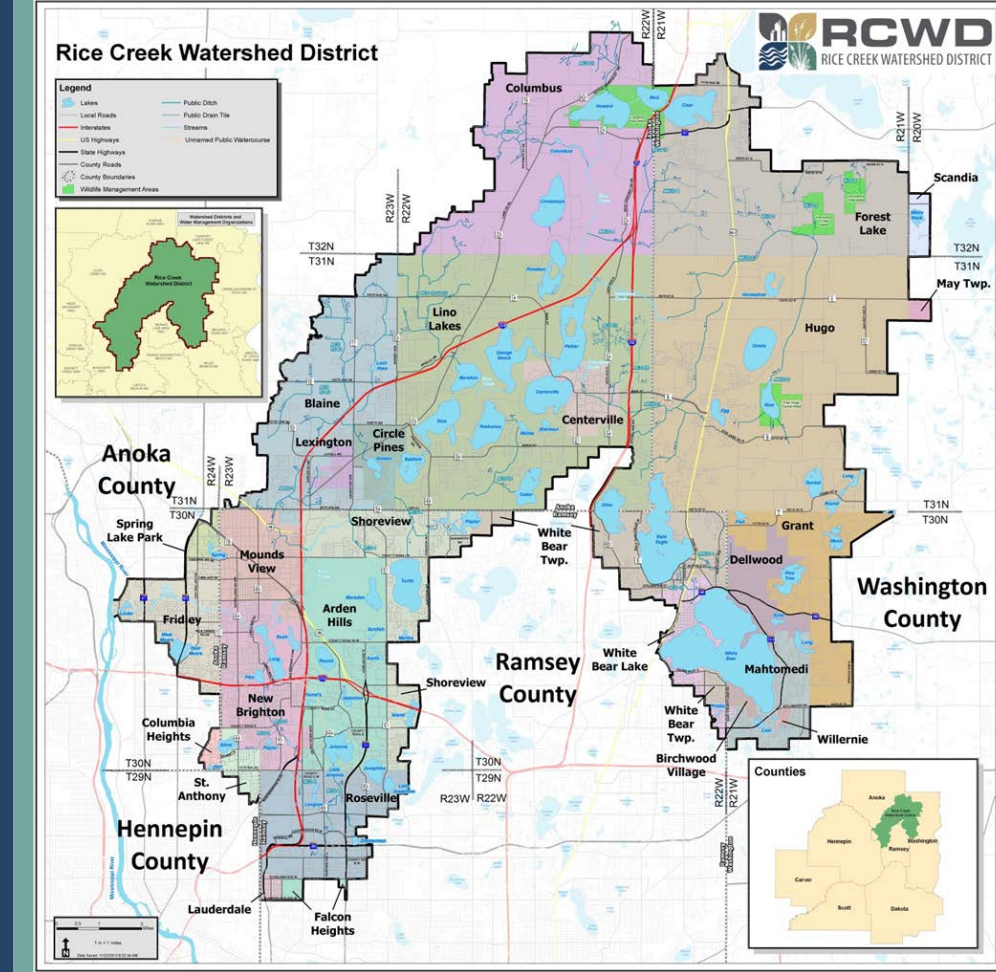
December 13, 2016
2016 Plant Conference
Phil Belfiori, Administrator

About the RCWD

- 186 square mile area
- Rural & Urban
- Rice Creek
- 60+ lakes
- 120+ miles of drainage
- 28 cities & 4 counties

FOCUS AREAS:

surface water quality, flood control, stormwater management, erosion control, drainage system maintenance, wetland protection, groundwater protection & municipal partnerships



Unique Planning Initiatives in RCWD

- Comprehensive Stormwater Management Plans (CSMP)
- Comp. Wetland Protection & Management Plans (CWPMP)
- NE Metro Groundwater Management Area- Reuse
- 8 TMDL studies complete, covering 18 waterbodies
- Existing and future condition hydraulic & hydrologic models
- Stormwater Reuse Assessment Tool (w/BWSR)
- Bi-annual Partnership meetings with all cities and counties

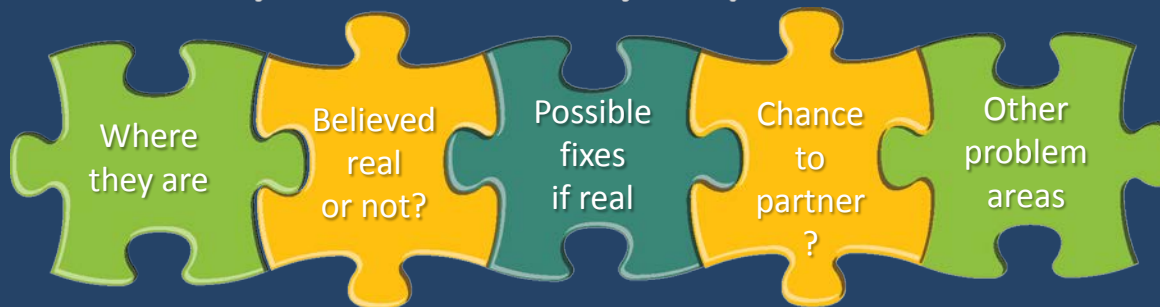


All of these tools are available to assist municipal planners with local water plan development!

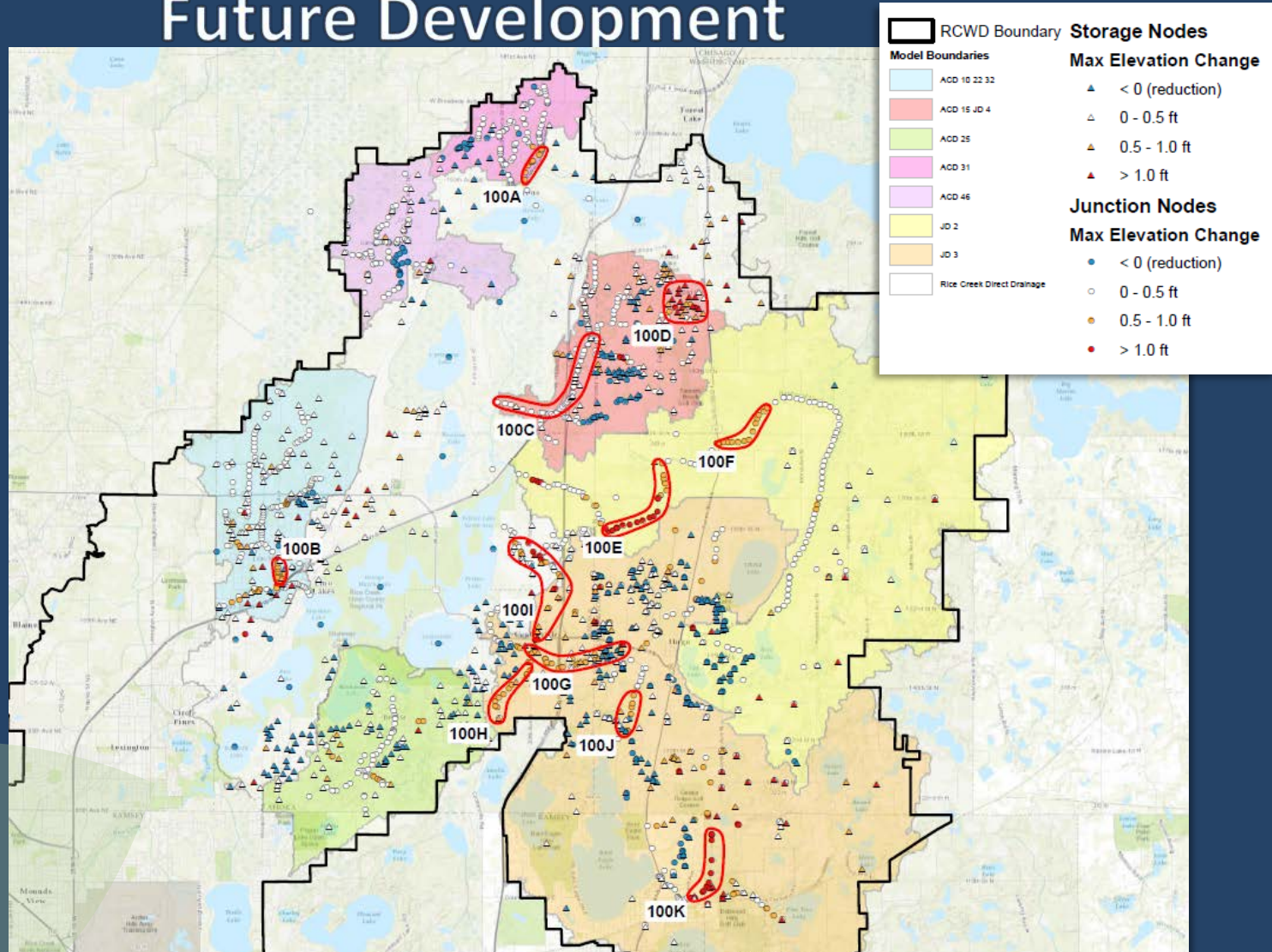
Thoughts About Future Regional Problem Areas – Your Plan

...from Bi-annual Partnership meetings

- Utilize resources provided by the District for your plan
- Think about current and future issues
- Generally address within your plan:



Future Conditions Model: Problem Areas and Estimated Floodplain Elevation Increases with Future Development



Incentives for Stormwater Reuse

- Allowed practice to meet RCWD volume control requirements
- Offer assistance through Urban Stormwater Remediation Cost-Share Program
- Assessment tool developed to target stormwater reuse
- Actively seeking partnerships with municipalities



Right: Oneka Ridge Golf Course
Reuse Irrigation Project

Preliminary Local Water Plan Schedule

... from Bi-annual Partnership meetings

March 31, 2017

- Birchwood Village
- Grant
- Mahtomedi
- May Township
- Willernie

Aug. 31, 2017

- White Bear Lake
- Roseville
- New Brighton
- Falcon Heights
- Columbia Heights
- St. Anthony
- Dellwood
- Hugo

Jan. 31, 2018

- Forest Lake
- Lauderdale
- Lexington
- Fridley
- Arden Hills
- Scandia
- Circle Pines
- Lino Lakes

July 31, 2018

- Shoreview
- White Bear Twp
- Columbus
- Blaine
- Spring Lake Park
- Centerville
- Mounds View



THANK YOU

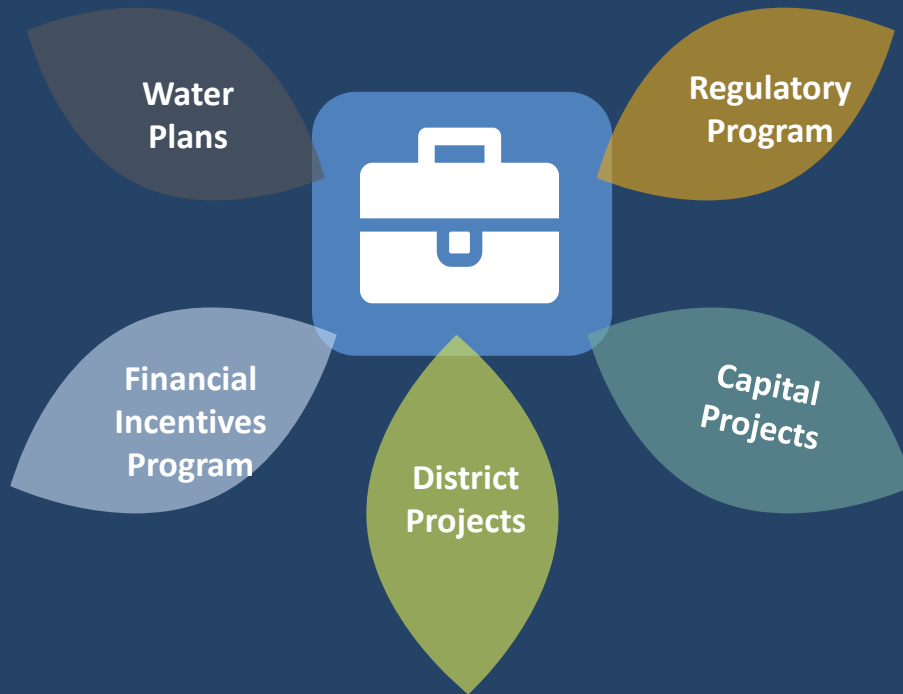


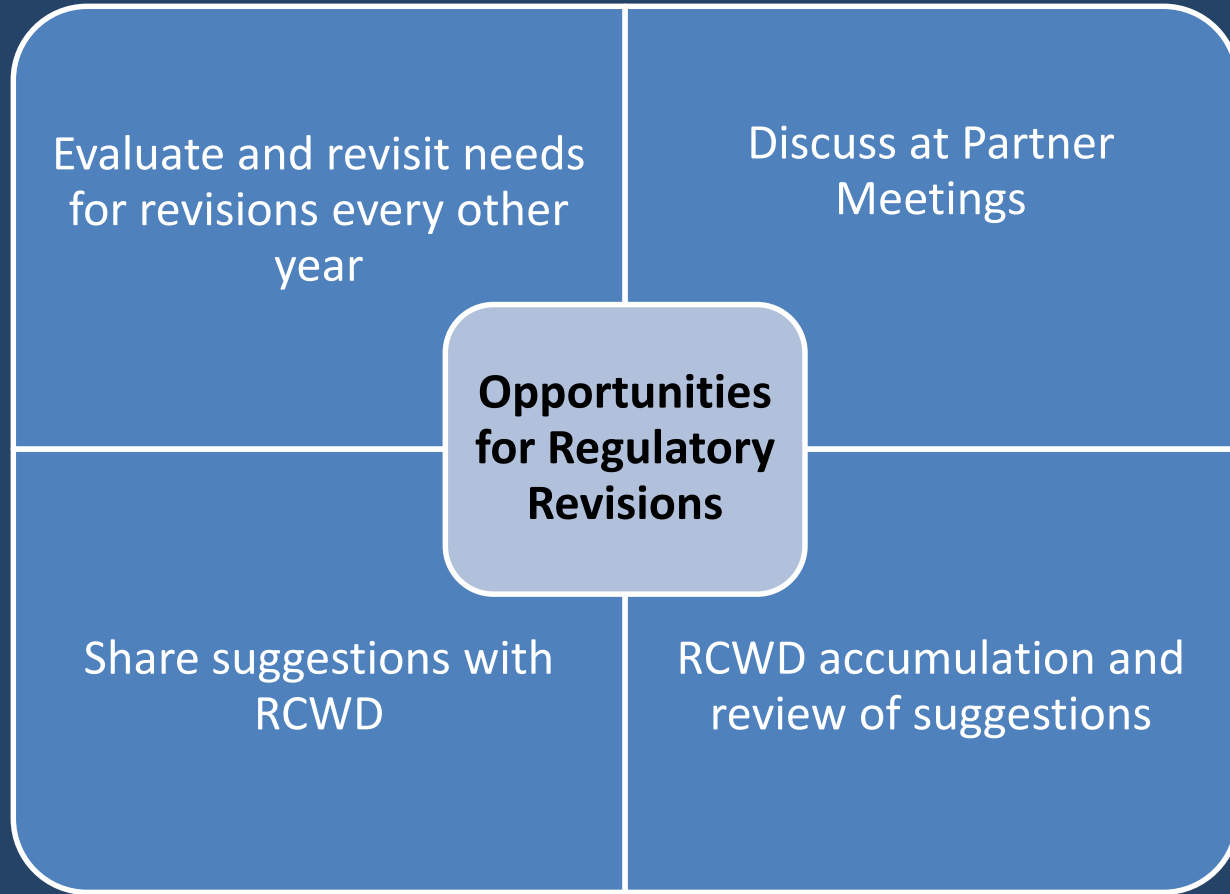
Extra slides if needed during Q and A



WELCOME

Our Tools





Bassett Creek Watershed Management Commission



Bassett Creek WMC

Originally formed in 1969 to focus on flood control along Bassett Creek.

Now operates under 1982 Metropolitan Surface Water Management Act.

Now focus on flood reduction + water quality improvements and protections

Includes parts of 9 cities, each with one city-appointed Commissioner:

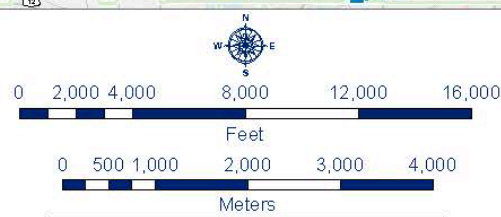
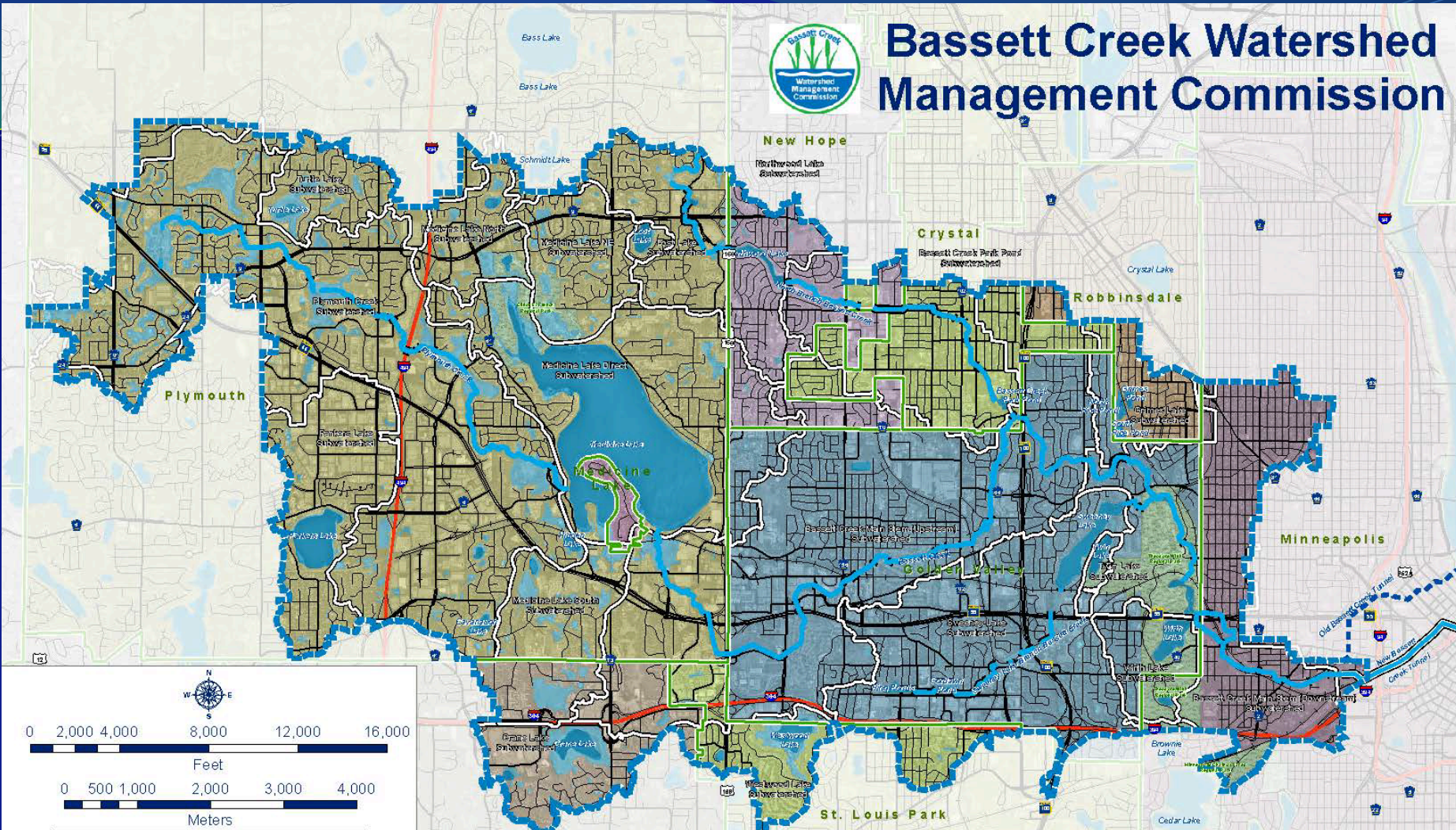
- Minneapolis
- Golden Valley
- Plymouth
- Crystal
- New Hope
- Robbinsdale
- St. Louis Park
- Minnetonka
- Medicine Lake



Photo: Dan Johnson



Bassett Creek Watershed Management Commission



	Bassett Creek Watershed		Old Territory
	Major Subwatersheds		Open
	City Boundaries		Culvert
	Regional Parks		Tunnel

- Greater than 40 mi²; Tributary to Mississippi River
- 4 major subwatersheds: Mainstem, Medicine Lake Branch (Plymouth Creek), North Branch, Sweeney Lake Branch
- Multiple lakes: Medicine, Westwood, Wirth, Twin, Sweeney, Lost, Northwood, Parkers, Turtle, Crane, others

Bassett Creek WMC

Vision Statement:

Stewardship of water resources to protect and enhance our communities



Photo: Dan Johnson

Commission Funding:

- Contributions from 9 member cities (\$500,000)
- Hennepin County tax levy for major projects (~ \$1.3 million)
- Grant funds and permit fees (varies)

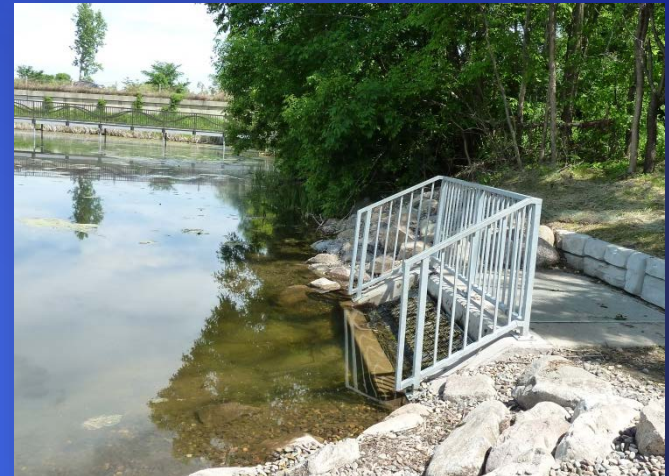
Bassett Creek WMC

Activities

- CIP Program
 - Streambank Restorations
 - Flood Control Projects
 - Infiltration Projects
 - Stormwater Reuse Systems
 - Water Quality Ponds
- Development Reviews
- Watershed-wide Modeling
 - XP-SWMM Hydrologic Model
 - P8 Model
- Monitoring – Quantity + Quality
- Education
- APM/AIS Issues



Wirth Lake Outlet Project



CIP: Streambank Restoration Project 2014-15

- Stabilized banks through Wirth Park
- Reduced pollutant loadings, improved near stream habitat



Bassett Creek WMC

Working Closely with Cities

- Active Technical Advisory Committee
 - Provides input and advice on technical aspects of projects and policy
 - Contributed significantly in developing 2015 Watershed Management Plan
- Partner in constructing CIP projects



Main Stem Restoration Project: Before and After

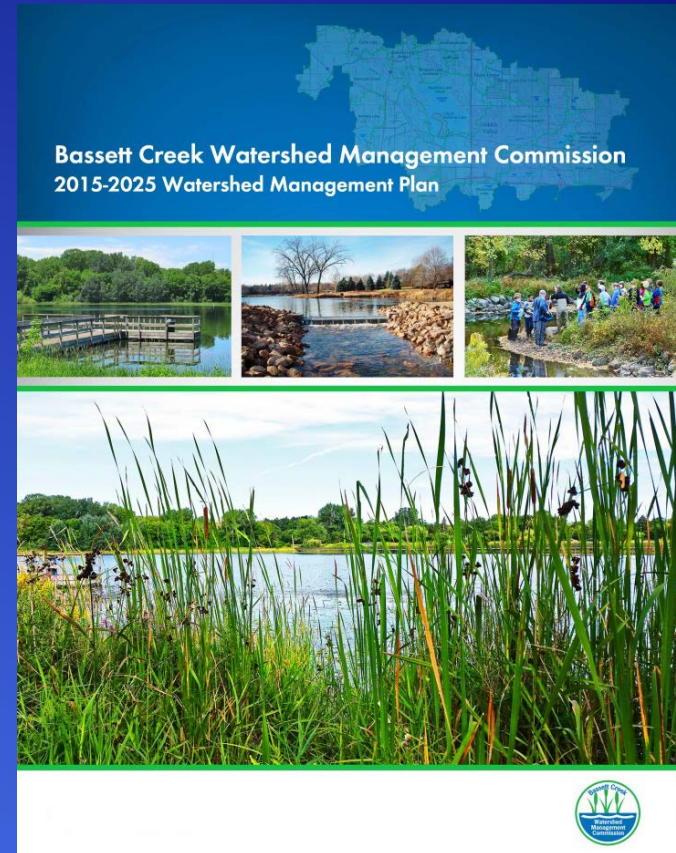
BCWMC Flood Control Project

- \$40M project 1978 – 1996 with ACOE, DNR, MnDOT, cities
- Reduced flood elevations along creek by 4.5 ft in Minneapolis
- Reduced annual flood damages by 62%
- Bassett Creek Tunnel
 - 2.4 mi under downtown
- Additional crossings and structures
- BCWMC performs annual inspections



BCWMC Watershed Management Plan

- Stakeholder input
 - Online survey
 - 10 small group meetings
 - Watershed Summit
- 24 Plan Steering Committee meetings
- 4 Commission-Agency-Partner workshops



Adopted in September 2015

Priority Policies & Strategies:

Adopted MPCA's Minimal Impact Design Standards (MIDS)

- Takes advantage of opportunity to improve conditions during redevelopment – a significant activity in this watershed
- MIDS Calculator “levels playing field” for assumptions and calculations for effects of various BMPs
- Guidance includes “off ramps” for projects that can't meet certain criteria, including infiltration (volume control)

Laura Jester

BCWMC Administrator

laura.jester@keystonewaters.com

952-270-1990

www.bassettcreekwmo.org



Follow us on Facebook!

