



PlanIt

Webinar Series for
Comprehensive Plan Updates

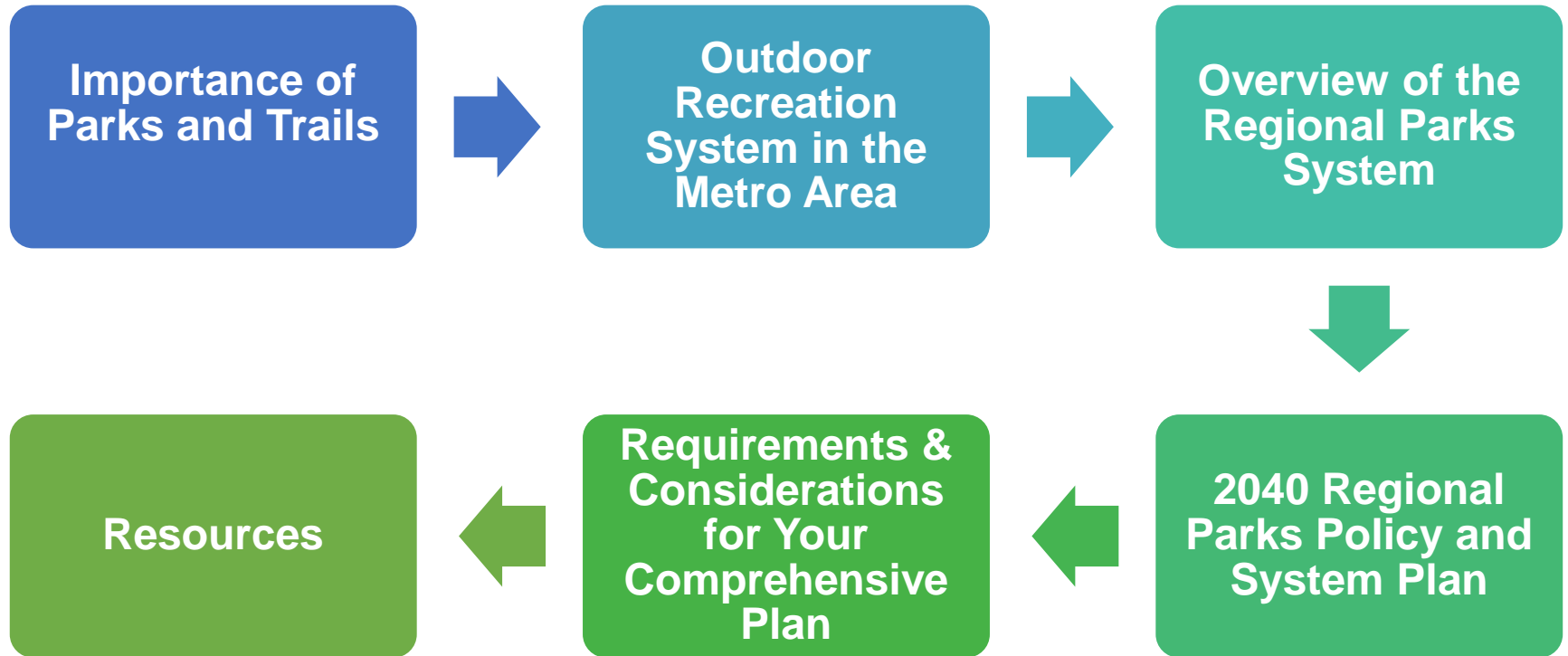
Making Your Plan a Walk in the Park

Presented by Jan Youngquist and Michael Peterka
September 15, 2016





Today's Presentation



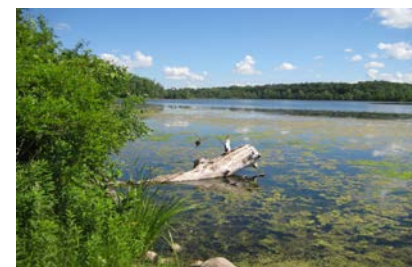


Importance of Parks and Trails

Why Are Minneapolis and St. Paul So Nice? Maybe It's the Parks

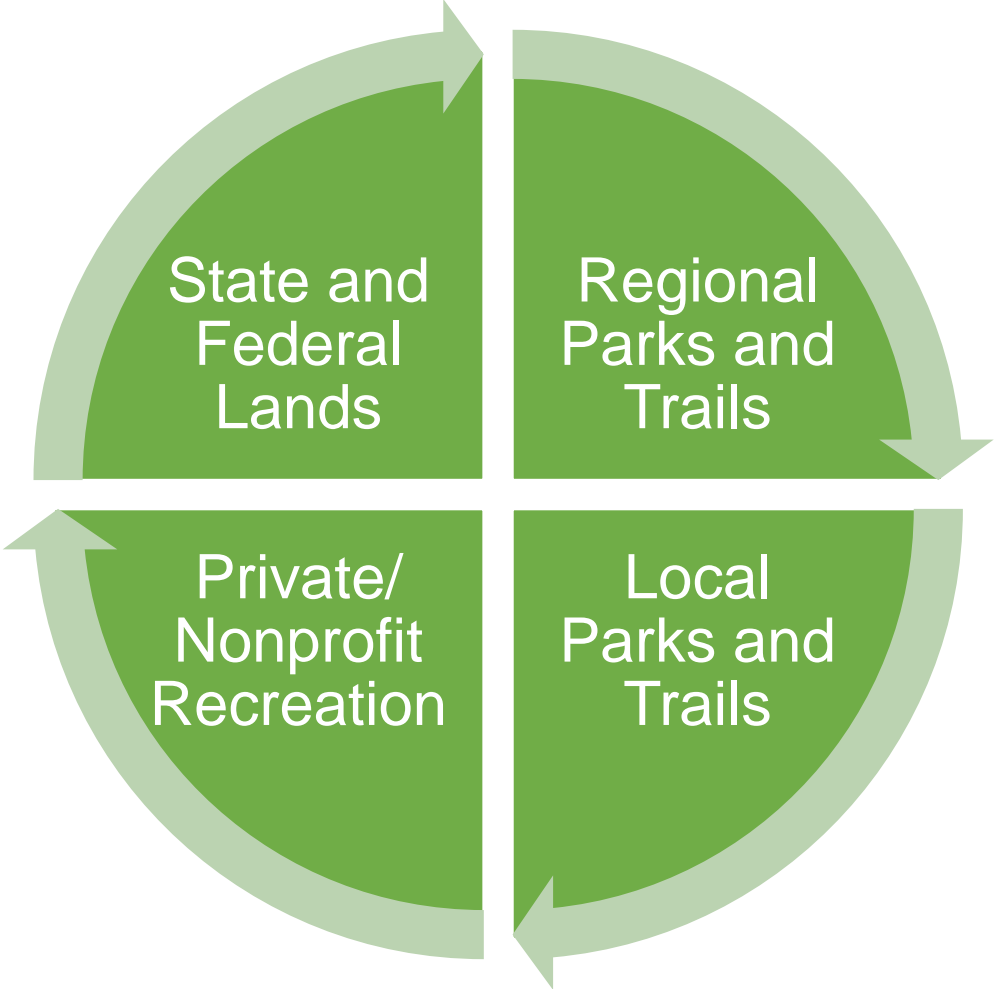
-New York Times

- Personal Benefits
- Community Benefits
- Environmental Benefits
- Economic Benefits





Outdoor Recreation System in the Metropolitan Area





National Parks/Federal Lands in the Metropolitan Area

- Mississippi National River and Recreation Area



Photo: National Park Service

- St. Croix National Scenic Riverway



Photo: National Park Service

- Minnesota Valley National Wildlife Refuge



Photo: CityKnown.com



State Parks and Trails in the Metropolitan Area



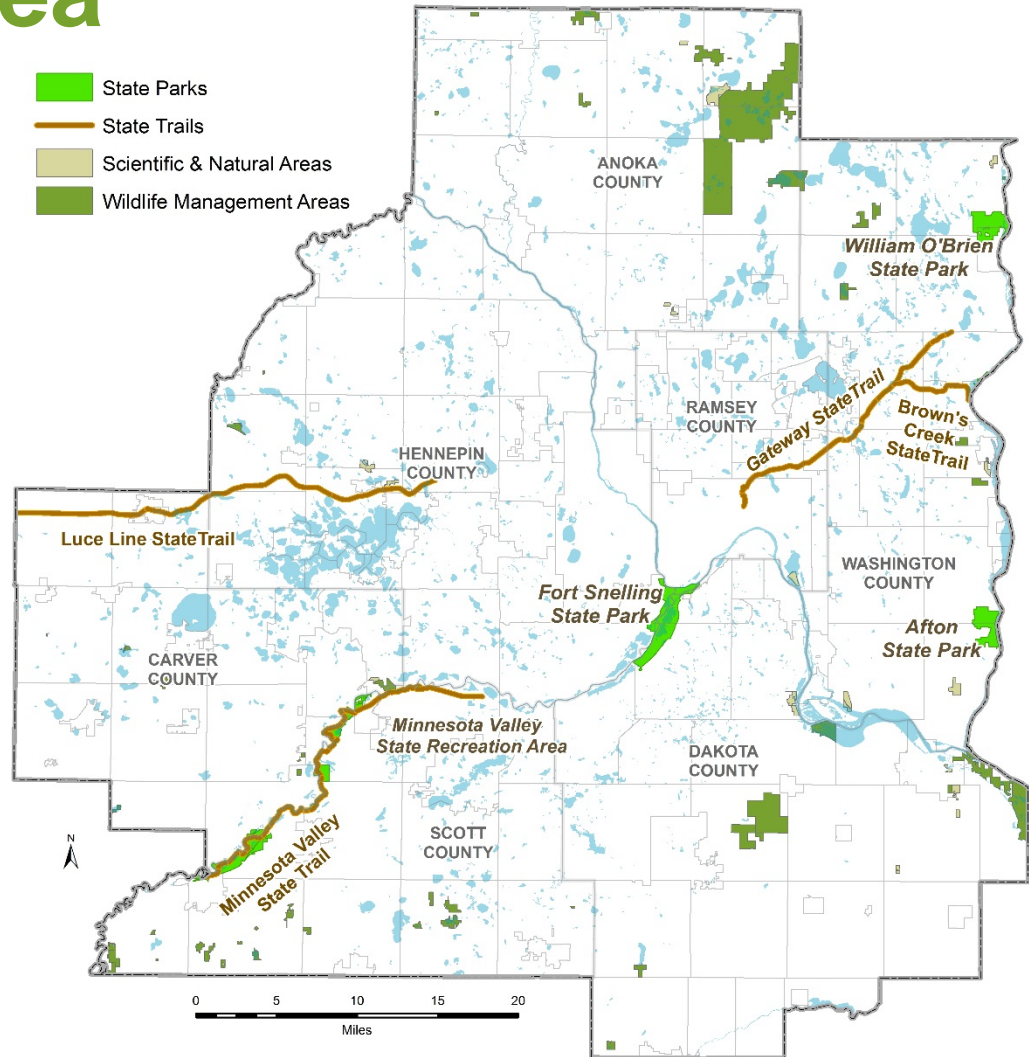
Afton State Park— MN DNR

Photo: Parks and Trails Council of Minnesota



Luce Line State Trail— MN DNR

Photo: Minnesota Department of Natural Resources





Regional Parks System

- Governed by the *2040 Regional Parks Policy Plan*
- Natural resource based
- Focused on water bodies
- Passive recreation
- Frequently crosses community boundaries



Hyland Bush Anderson Lakes Park Reserve—
Bloomington & Three Rivers Park District





Local Parks

- Tot lots, neighborhood parks, athletic fields and courts, community centers
- Located near schools, neighborhoods, community facilities
- Serve the local community
- May offer active and passive recreation



Classification System for Local and Regional Parks

Table 2: Classification System for Local and Regional Park Facilities

Component	Use	Service Area	Size	Site Attributes	Site Location
Local Facilities					
Mini-park	Specialized facilities that serve a concentrated or limited population or specific group such as tots or senior citizens.	Less than 1/4 mile radius	< 1 acre		May be publicly or privately owned and/or incorporated into a development site, such as apartment,
Neighborhood park/playground	Area for intense recreational activities such as field games, court games, crafts, apparatus area, skating, and neighborhood centers.	¼ to ½ mile radius to serve a population of 4,000 – 5,000 (one neighborhood)	< 25 acres	Physical geography suited for intense development.	Proximity to elementary schools or residential neighborhoods.
Community playfield	Area for intense recreational facilities such as athletic fields and swimming pools; could include a neighborhood use.	3 - 5 neighborhoods or one community	25 - 50 acres	Physical geography suited for intense development.	Proximity to secondary schools and other public facilities.
Community park	Area of natural or ornamental quality for outdoor recreation such as walking, viewing, sitting, picnicking; could have some field and court games.	3 - 5 neighborhoods or one community	25 - 100 acres	Affords natural features with varied physical geographic interest.	Proximity to community facilities and resources.
County park	Area of natural or ornamental quality for outdoor recreation such as walking, viewing, sitting, picnicking; could have some field and court games.	County	25 - 100 acres	Affords natural features with varied physical geographic interest.	Proximity to community facilities and resources and/or where resource occurs.





Private or Non-Profit Recreation in the Metropolitan Area

Examples:

- Golf courses
- Ski/snowboard areas
- Gun clubs
- Marinas
- Nature centers





Creation of the Regional Parks System

In 1974, State Legislature found that:

Pressure of urbanization and development **threatens valuable recreational open space areas** in the metro area at the same time as the need for such areas is increased.



Vadnais-Snail Lakes Regional Park—
Ramsey County

Minn. Statute 473.302

PlanIt





1974 Metropolitan Parks Act

Regional Parks Policy Plan shall:

- Identify generally the areas, which together with State facilities, will meet the outdoor recreation needs of the people of the metropolitan area



Minnehaha Regional Park—
Minneapolis Park & Recreation Board

Minn. Statute 473.147



Regional Park Implementing Agencies





Role of the Park Implementing Agencies

- Develop master plans
- Acquire land, develop, and rehabilitate regional parks and trails
- Operate and maintain the regional parks system
- Coordinate with local communities



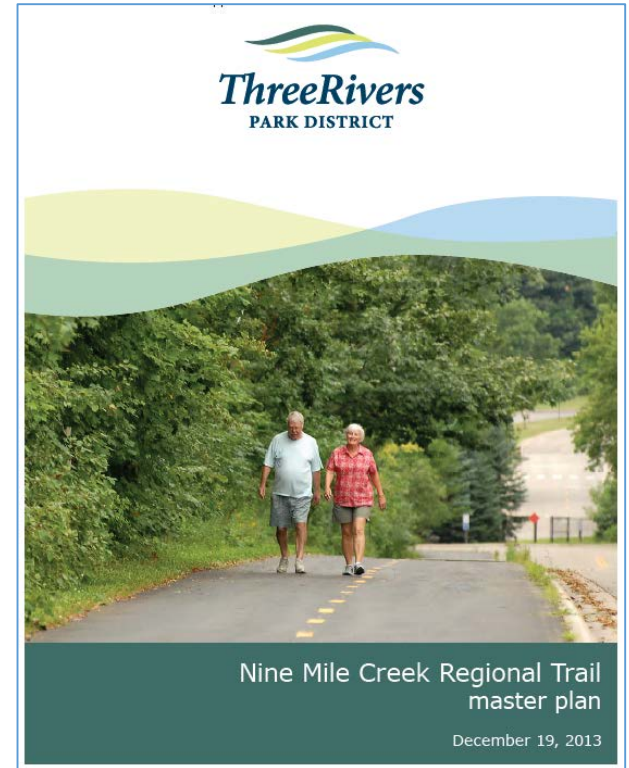
Cottage Grove Ravine Regional Park—
Washington County





Master Plans

- Implementing agencies prepare master plans for each regional park and trail
- Metropolitan Council review and approval





Regional Parks System

- Currently includes:
 - 42 Regional Parks
 - 12 Park Reserves
 - 40 Regional Trails
 - 8 Special Recreation Features
 - 54,600 acres
 - 360 miles of regional trails
- Hosted 47.3 million visits in 2015





Regional Parks System Facilities: Regional Parks

- 100 to 500 acres
- 42 regional parks open to the public
- Diversity of nature-based resources
- Swimming, boating, picnicking, walking & biking on trails



**Lebanon Hills Regional Park —
Dakota County**





Regional Parks System Facilities: Park Reserves



**Baker Park Reserve—
Three Rivers Park District**

- 1,000 to 5,000 acres
- 12 park reserves open to the public
- 80% natural habitat
- Environmental education, nature centers, campgrounds, walking/biking trails





Regional Parks System Facilities: Regional Trails



Mississippi River Regional Trail—
Anoka County

- 40 regional trails
- Link regional parks, park reserves, and trails
- 360 miles open to the public
- Walking, biking, inline skating, commuting





Regional Parks System Facilities: Special Recreation Features



Como Conservatory



Noerenberg Gardens



Square Lake



Gale Woods Farm



Silverwood



The Landing



Kingswood





If you went to **one** regional park, park reserve or special recreation feature **a week**, it would take you **more than a year** to visit them all!

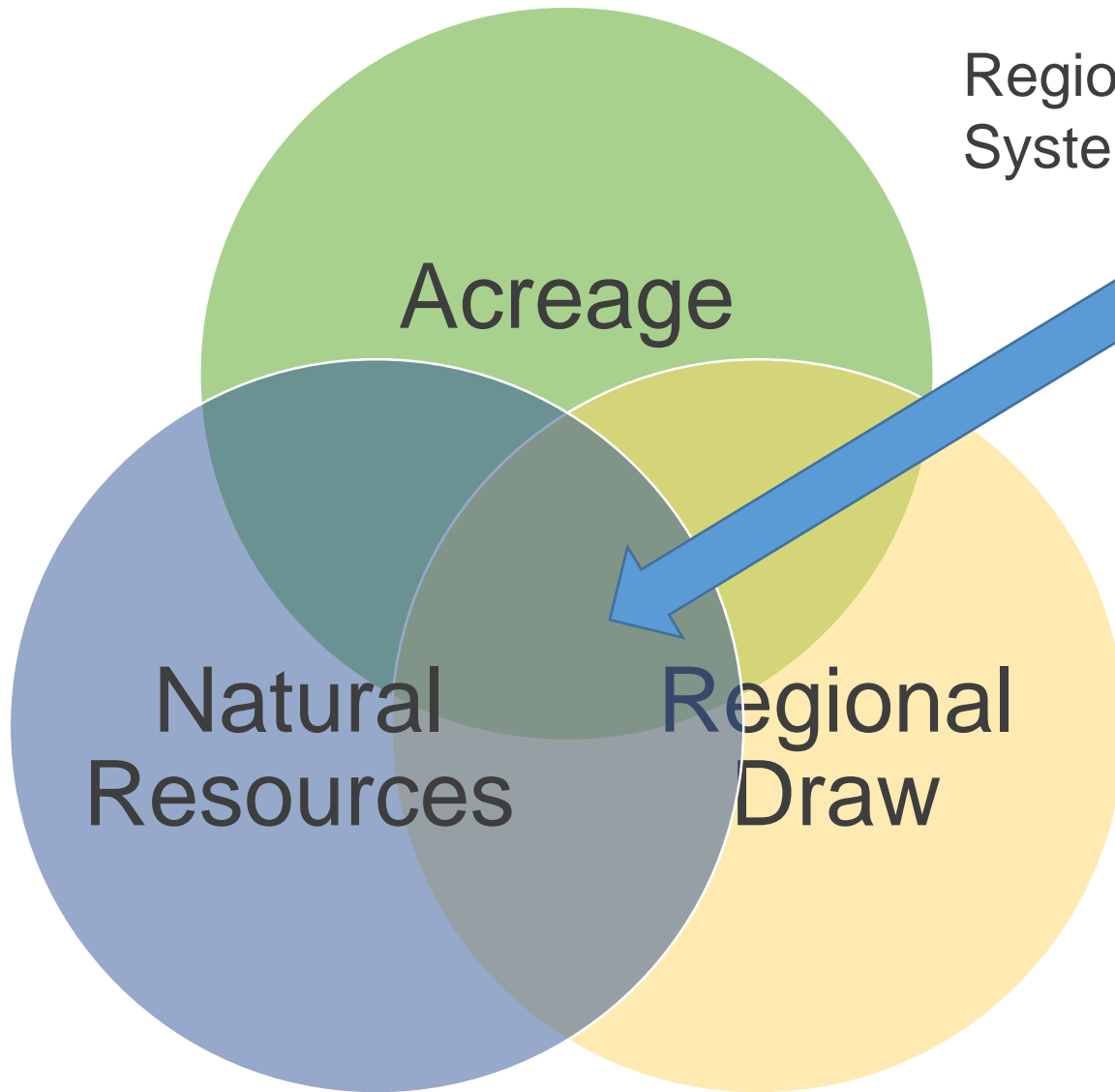


PlanIt



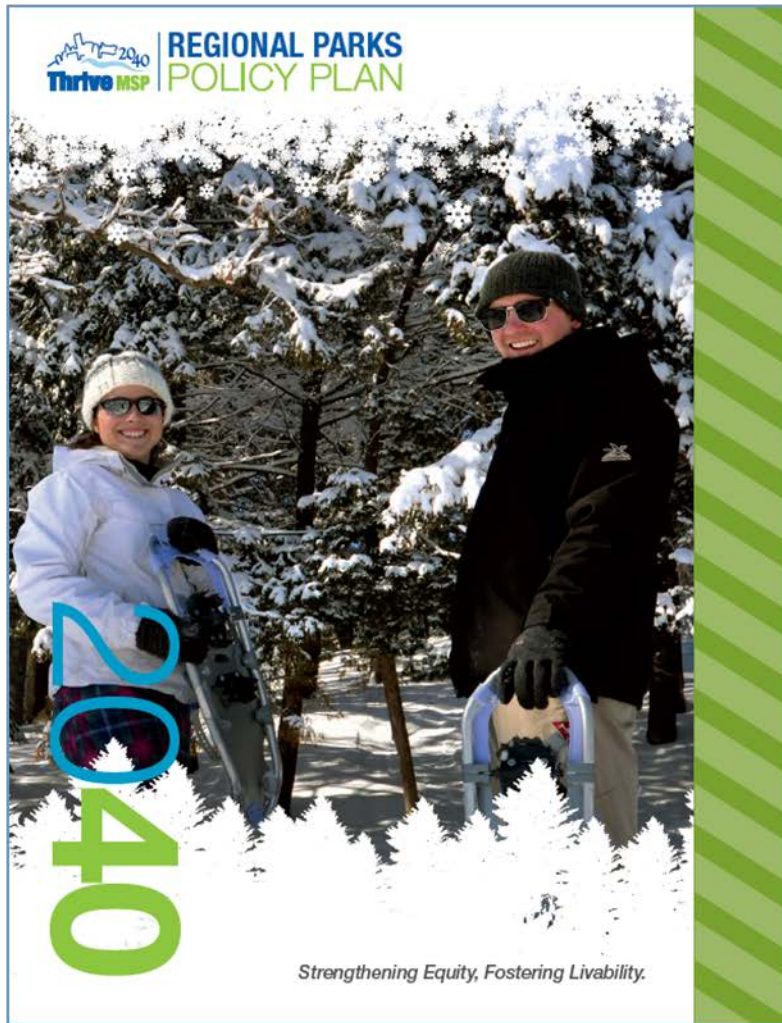


Regional Parks System





2040 Regional Parks Policy Plan



- Guiding document
- Identifies which parks and trails are part of the regional parks system





2040 System Plan

- Existing Regional Parks System Facilities
- Planned Regional Parks System Facilities
- Regional Parks System Boundary Adjustments
- Regional Park Search Areas
- Regional Trail Search Corridors
- 2040 Regional Trail Search Corridors System Additions



Dakota Rail Regional Trail—
Carver County



Cedar Lake Farm Regional Park—
Scott County



Minnehaha Parkway Regional Trail—
Minneapolis Park & Recreation Board

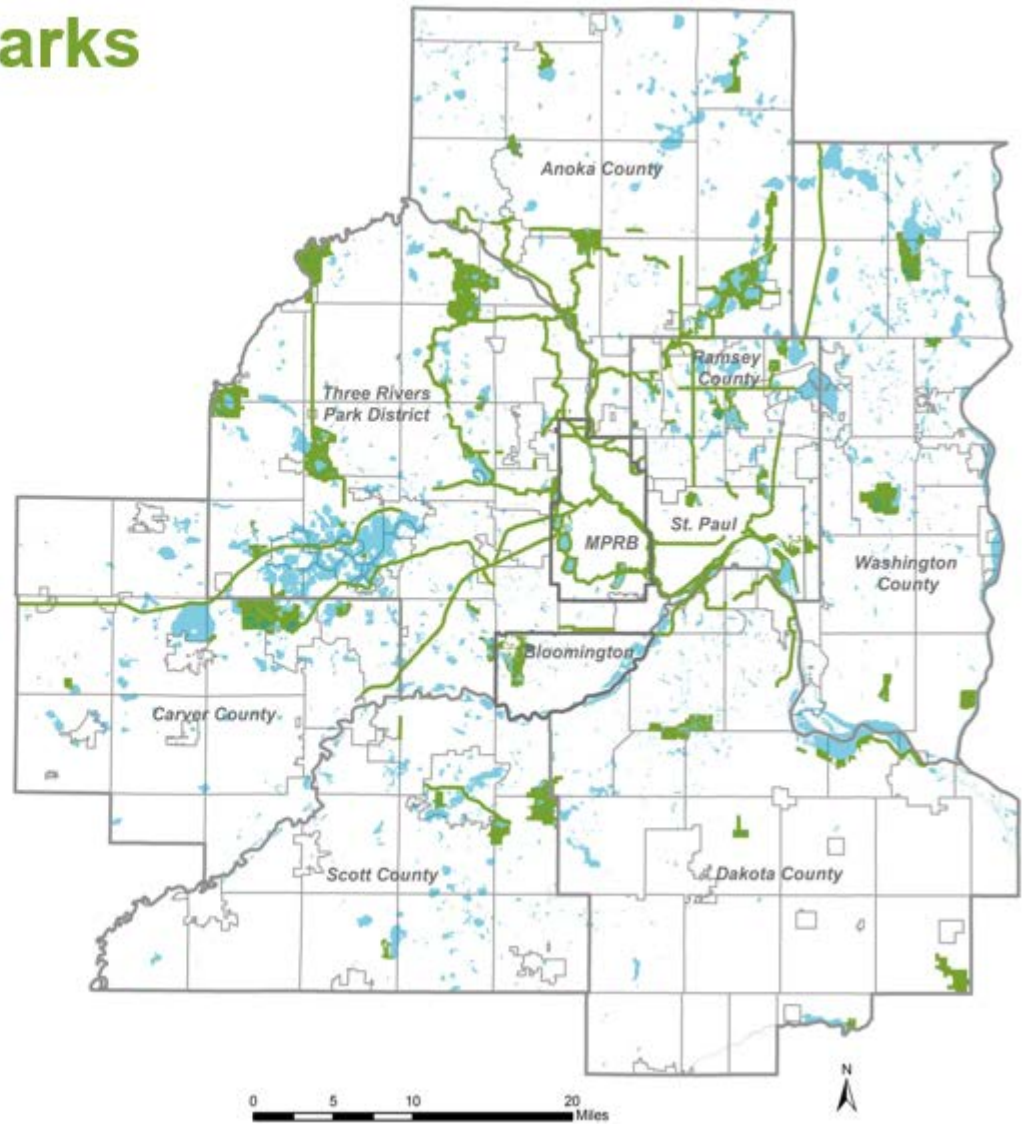




Existing Regional Parks System Facilities

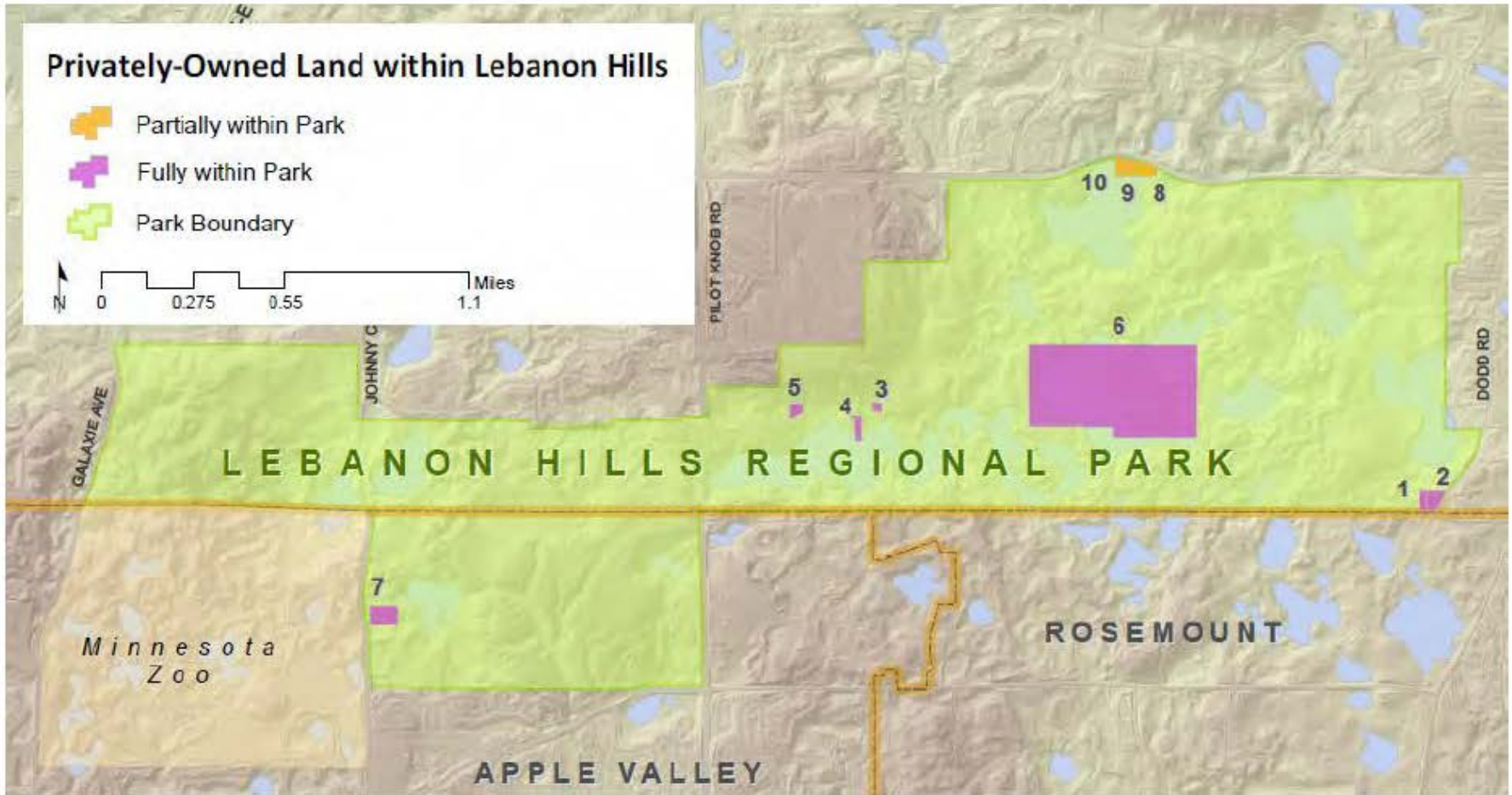
42 Regional Parks
12 Park Reserves
8 Special Recreation Features

40 Regional Trails



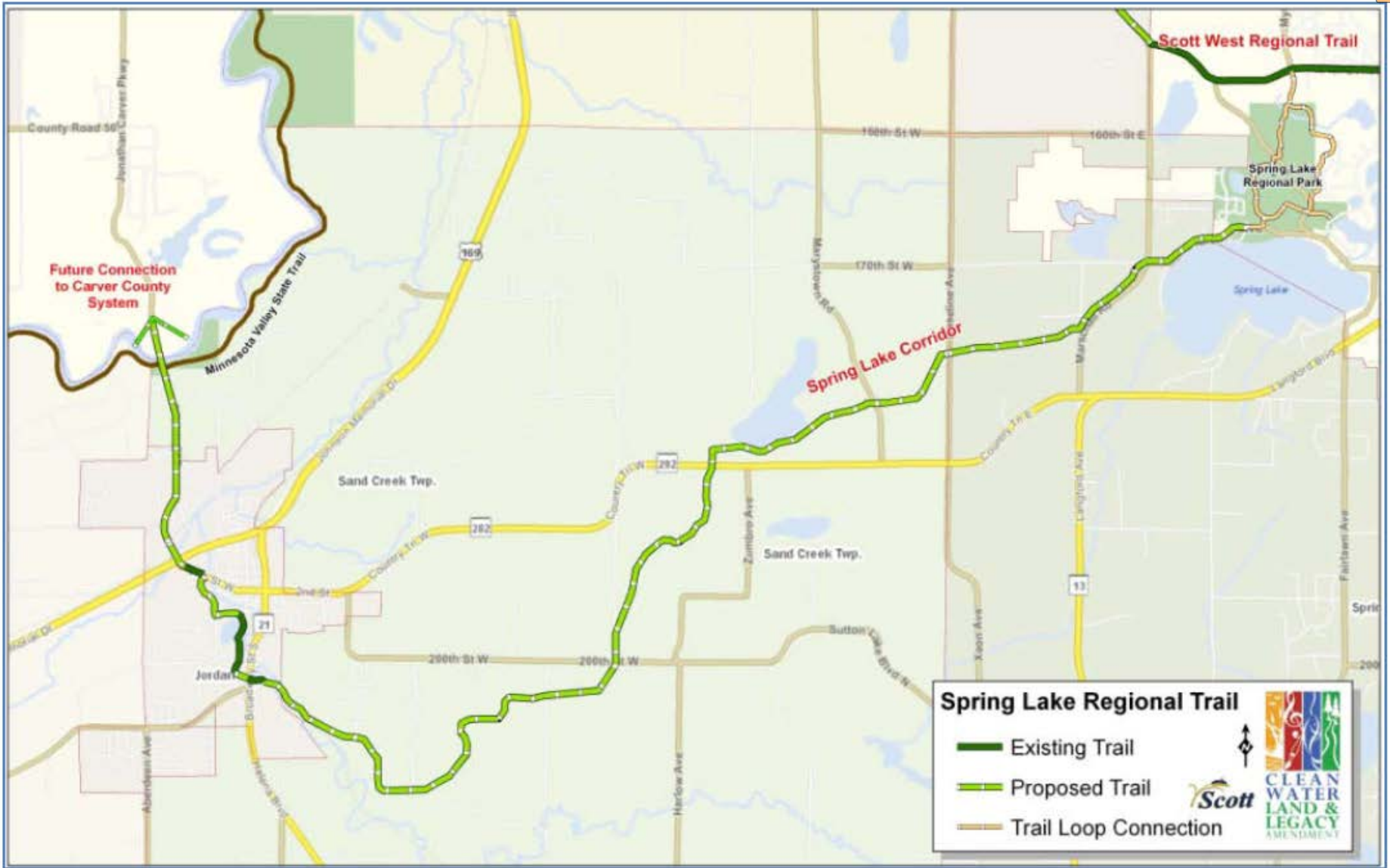


Existing Regional Park with Inholdings



Coon Creek Regional Trail— Anoka County





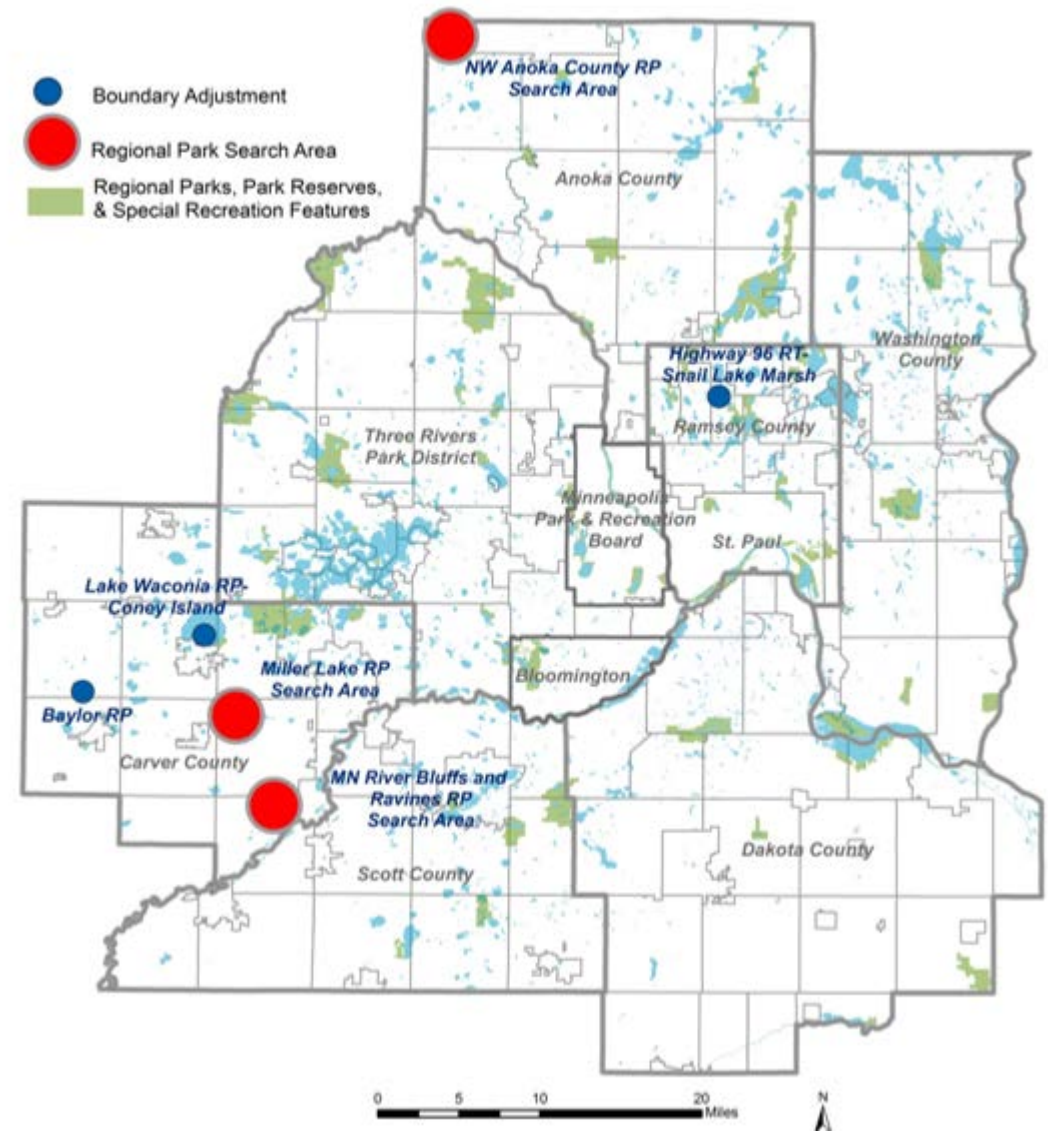
PlanIt



Planned Regional Parks System Facilities

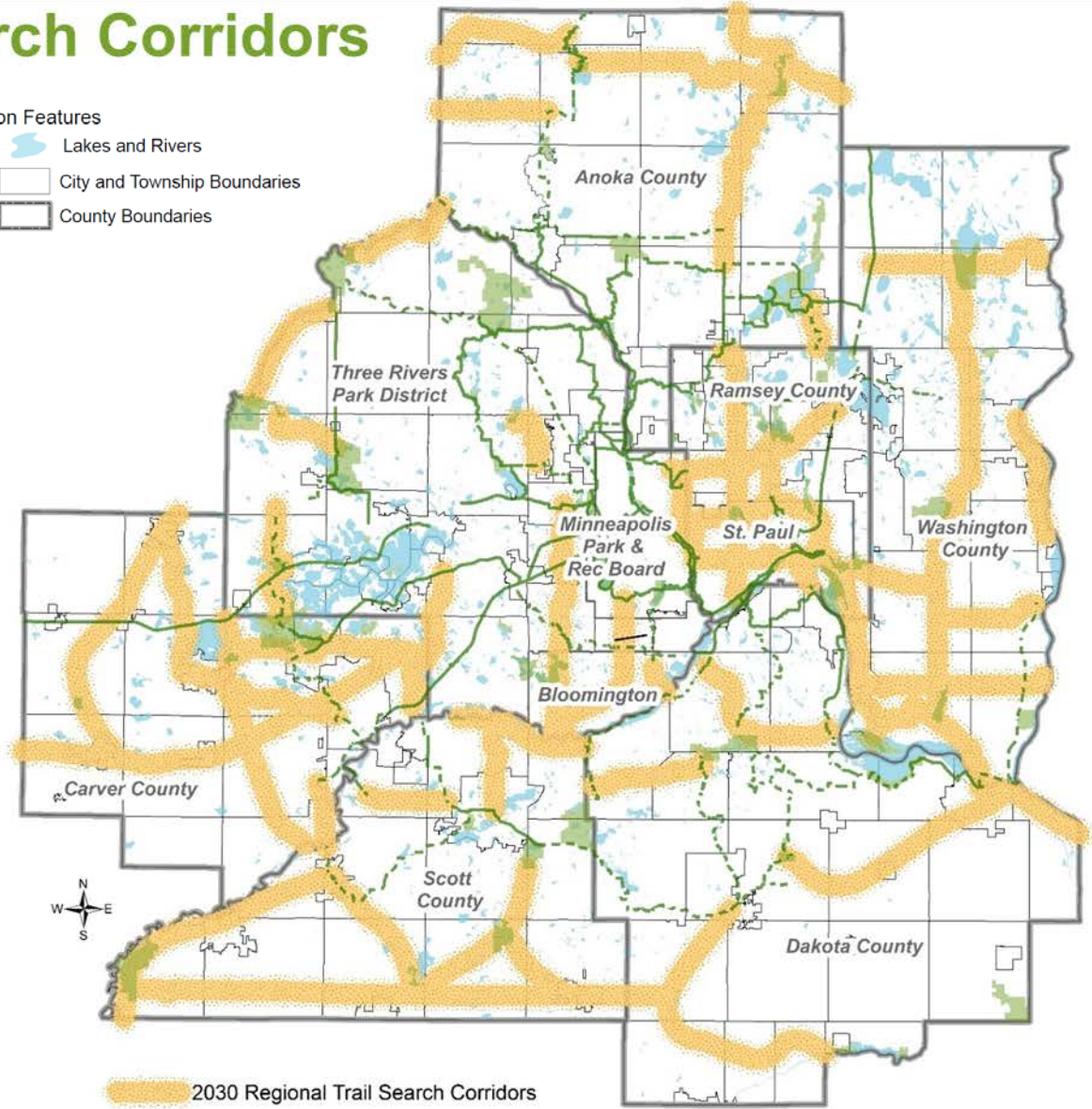


- **Boundary Adjustments:** General areas identified to be added to existing regional parks and trails
- **Search Areas:** General areas identified for future regional parks
- Implementing agencies will develop master plans



Regional Trail Search Corridors

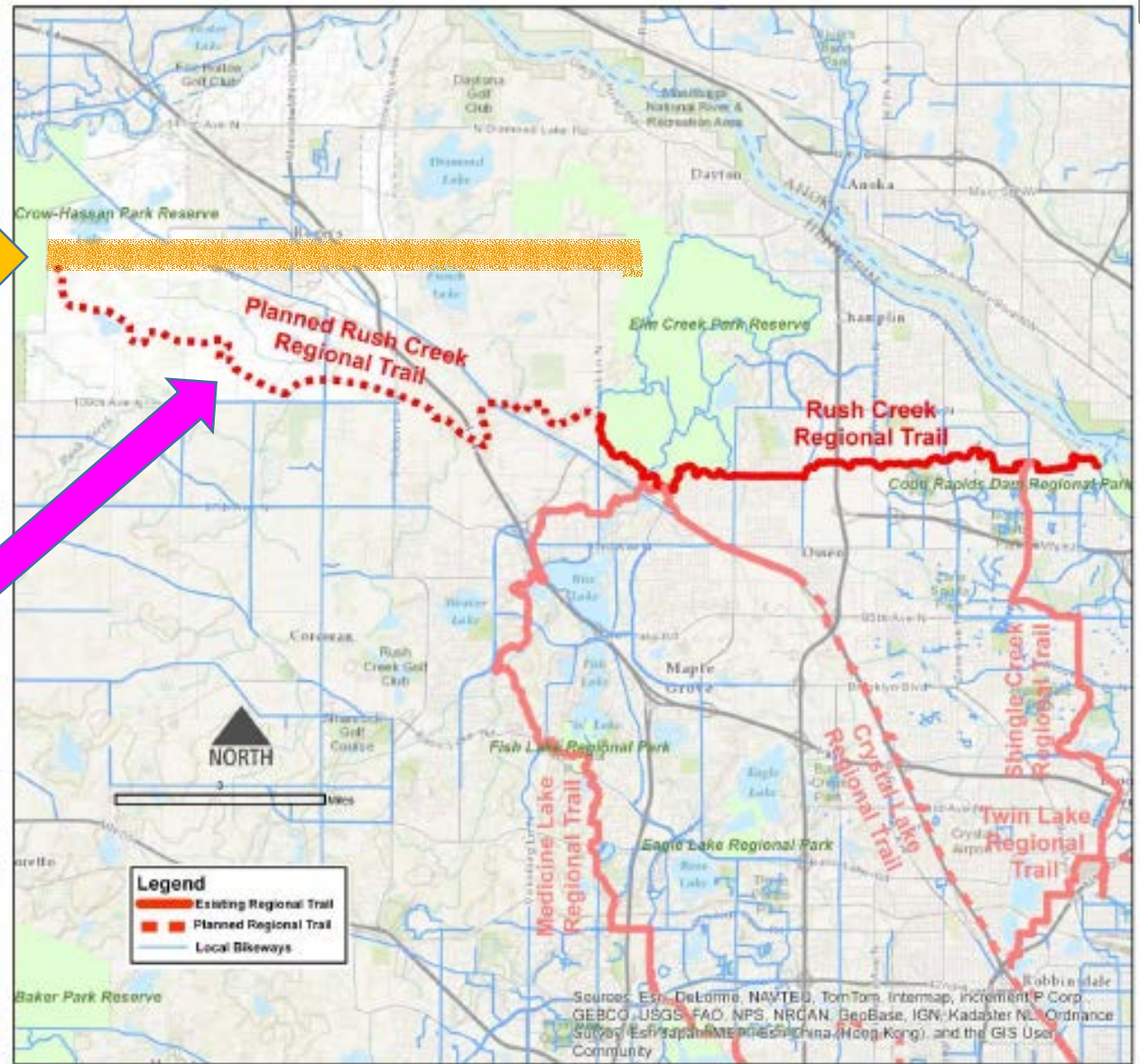
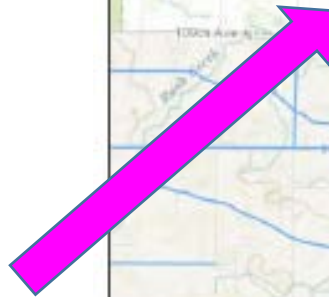
- Regional Parks, Park Reserves, Special Recreation Features
- Existing Regional Trails
- Planned Regional Trails
- Regional Trail Search Corridors
- Lakes and Rivers
- City and Township Boundaries
- County Boundaries



Search Corridor (from 2030 Regional Parks Policy Plan)



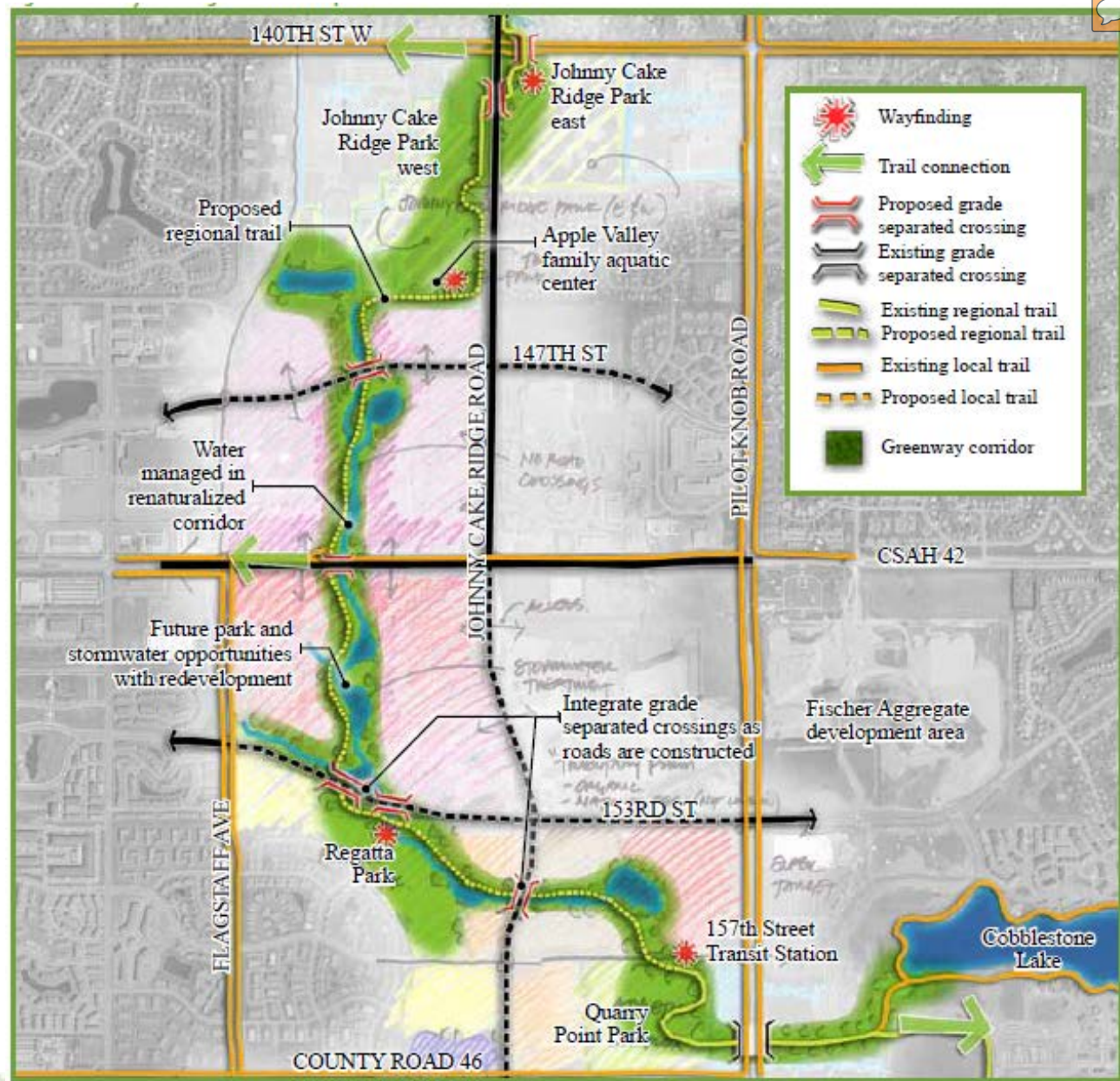
Subsequent Planned Alignment



North Creek Regional Trail—Dakota County

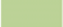






North Creek Greenway

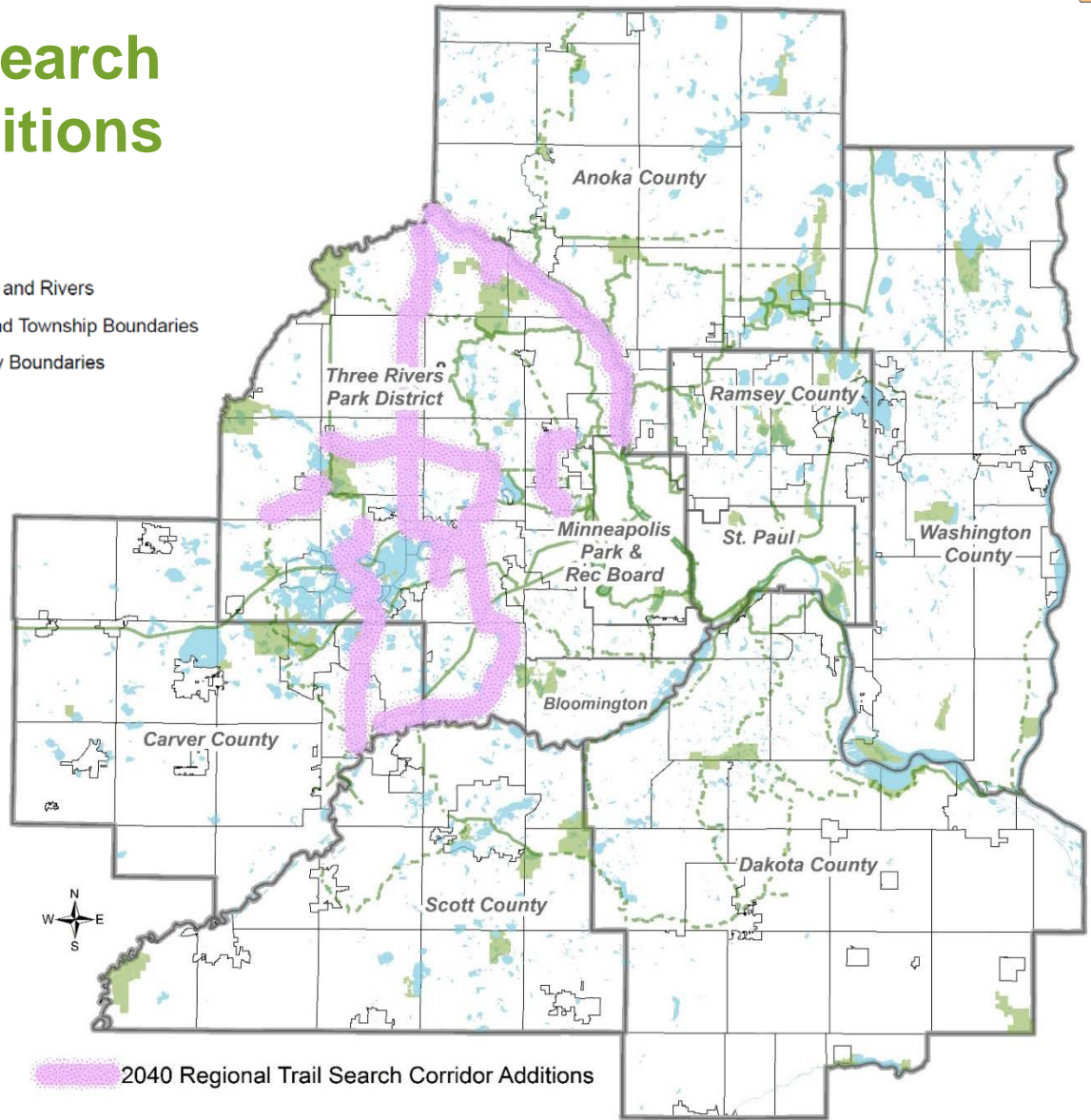
MASTER PLAN






2040 Regional Trail Search Corridor System Additions

-  Regional Parks, Park Reserves, Special Recreation Features
-  Existing Regional Trails
-  Planned Regional Trails
-  2040 Regional Trail Search Corridor Additions
-  Lakes and Rivers
-  City and Township Boundaries
-  County Boundaries



 2040 Regional Trail Search Corridor Additions



2040 Regional Parks System Plan

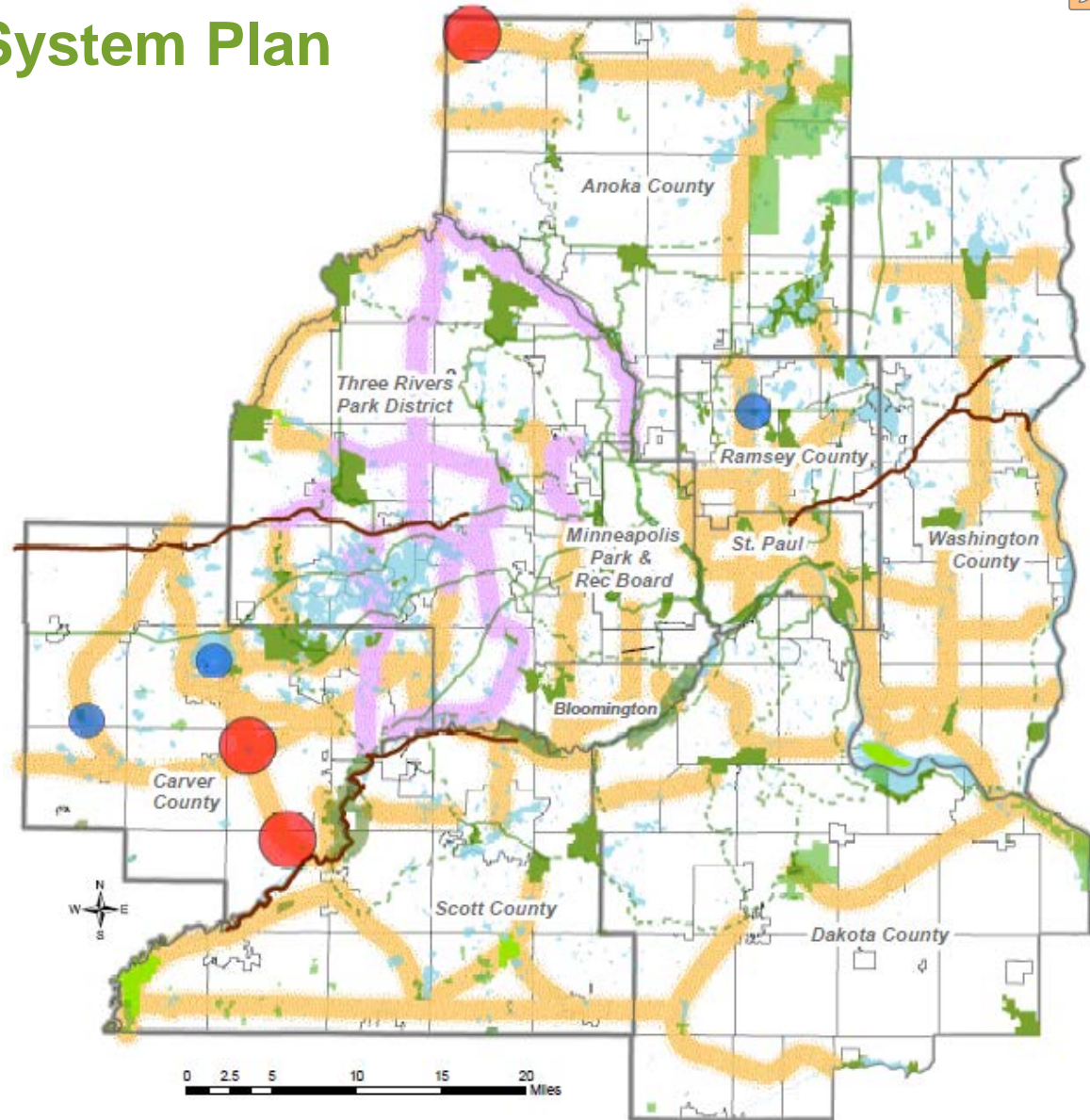


Regional Parks, Park Reserves, Special Recreation Features

- Existing
- Planned
- Boundary Adjustment
- Search Area

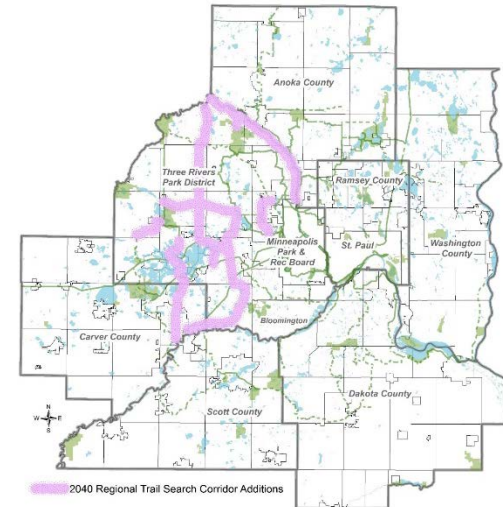
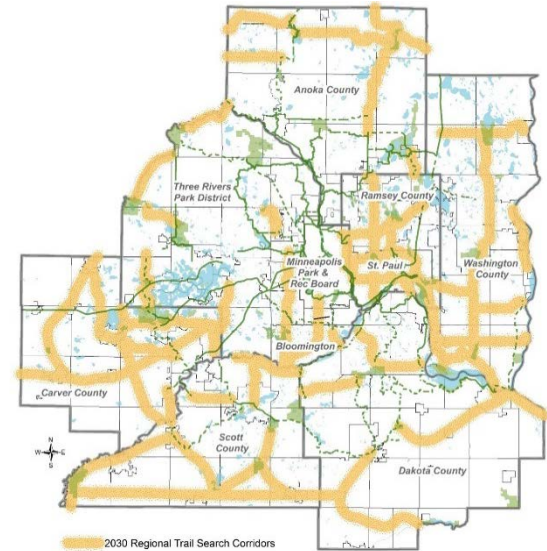
Regional Trails

- Existing Regional Trails
- Planned Regional Trails
- Regional Trail Search Corridors
- 2040 Regional Trail Search Corridor Additions



Key Changes in 2040 Regional Parks Policy Plan

- All proposed regional trails identified as regional trail search corridors
- New 2040 Regional Trail Search Corridor System Additions



Change in Trail Mapping Example

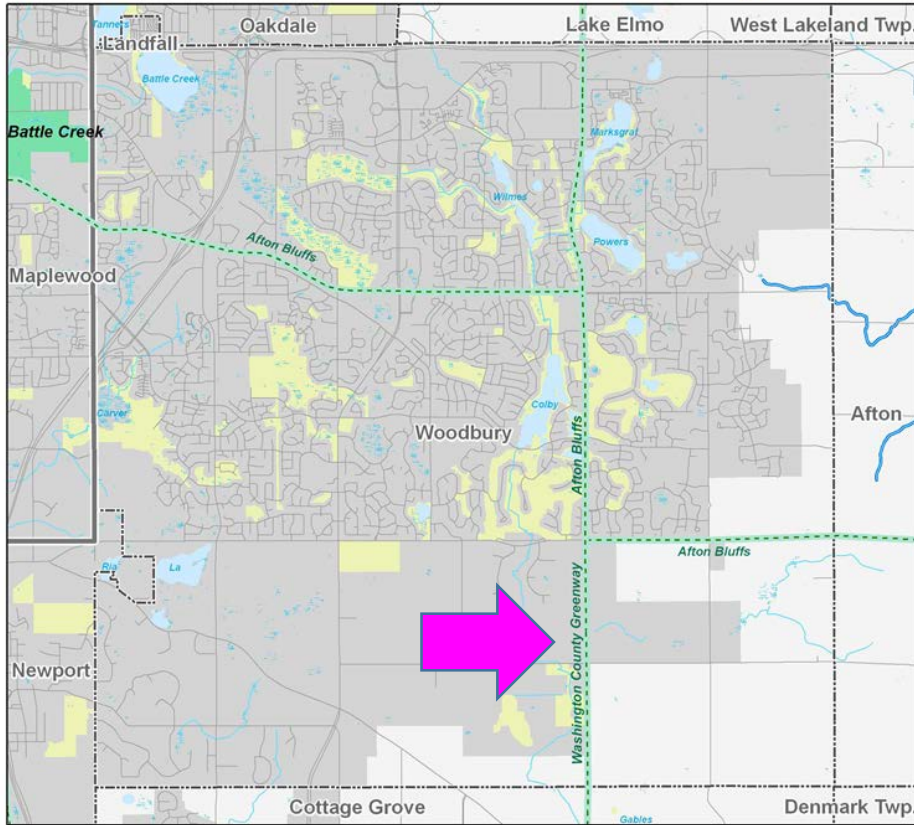


Figure 2. Regional Parks System Statement Map

July 2005



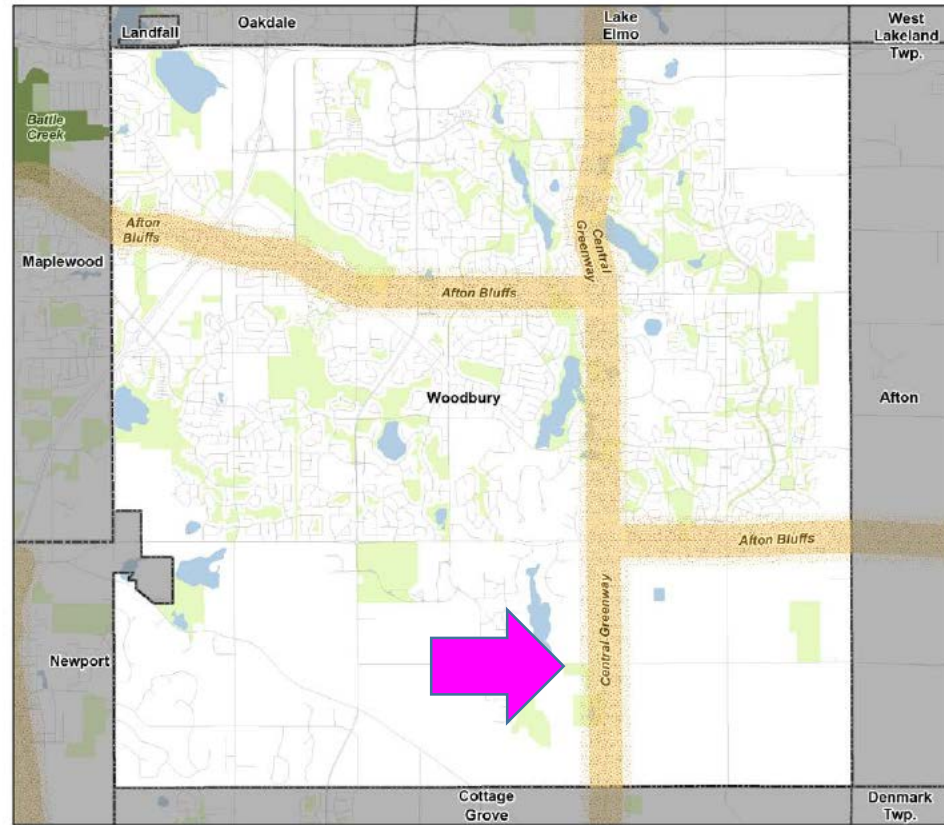
Woodbury



2030 System Statement
Proposed trails

Regional Parks System

City of Woodbury, Washington County



2040 System Statement
Regional trail search corridors





Regional Parks System

Required Elements for Your Comprehensive Plan

- Describe, map, and label all Regional Parks System Facilities that are located in your community



Make sure to use up to date mapping in your comprehensive plan





Regional System

The City is fortunate to have two regional trails that loop through the City and extend for miles east and west. The Cedar Lake LRT Regional Trail stretches from Hopkins to the Midtown Greenway in Minneapolis. The North Cedar Lake Regional Trail starts at Highway 169 and Excelsior Boulevard (intersecting with the Cedar Lake LRT) and connects to downtown Minneapolis. Both trails link up with the celebrated Minneapolis Grand Rounds Scenic Byway that encircles most of Minneapolis with 50 miles of off-street trails.

A possible third future regional trail is being studied by Three Rivers Park District. It would follow the Canadian Pacific (CP) railroad corridor and could stretch from the Minnesota River in Bloomington to Hopkins.

The regional trail system is the backbone of the City's bicycle system. It also provides great recreational walking/jogging routes. The regional system has the highest level of use and is the highest priority for snow removal and other maintenance of the pedestrian and bicycle systems.

Regional Parks, Open Space and Trails in St. Louis Park





Regional Facilities

Three Rivers Park District is responsible for the planning, development and operation of "regional" park and recreation facilities in Maple Grove and throughout the park district. This regional outreach serves a large portion of the greater Minneapolis-St. Paul metropolitan region. The Maple Grove Park Board has always focused its planning and development effort so as to avoid unnecessary duplication of amenities and services. Five regional facilities exist or are planned in Maple Grove:

- Elm Creek Park Reserve - existing
- Fish Lake Regional Park - existing
- Eagle Lake/Pike Lake Regional Park - existing
- Rush Creek Regional Trail - partially complete
- Medicine Lake Regional Trail - partially complete
- Crystal Lake Regional Trail - partially complete



2030 Comprehensive Plan

Regional Parks: Regional parks have maintained their philosophy of providing recreational opportunities in a natural resource type setting. The parks provide many of the amenities and special facilities that are not provided by the Maple Grove system.

Regional Trails: Regional trails provide a high quality trail experience typically through a broad corridor of diverse natural beauty. The regional trails are often designed to limit vehicle conflicts or interruptions which make them a very safe and attractive recreation amenity in the system. In Maple Grove the Medicine Lake Regional Trail will provide a central spine to the local trail network linking the City trail system to the larger regional context. Likewise, Rush Creek Regional Trail links Coon Rapids Dam to Elm Creek Park Reserve and is planned to continue west to Crow-Hassan Park Reserve.





EXISTING PARK AND TRAIL SYSTEM

-  City Park
-  School District Facility
-  Three River Park District Facility
-  City Forest Preservation Area
-  Park Trail
-  Three Rivers Park District Trail
-  City Pathway

00 Map Key
Refer to the Park Facilities Table on the following page for more park detail.

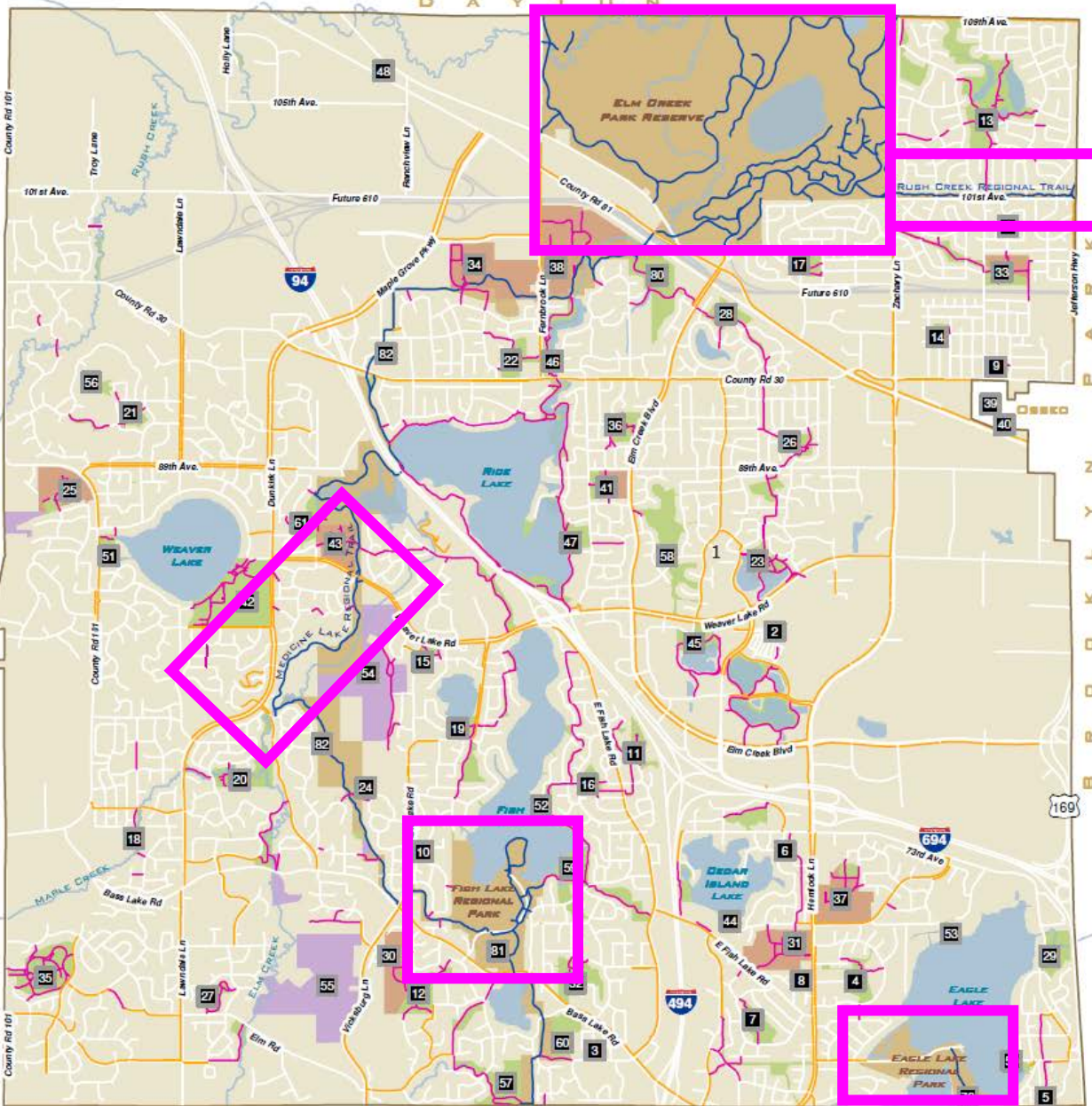


Exhibit 1



Regional Park Search Area Example



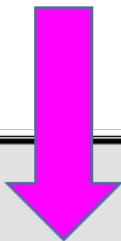
2030 COMPREHENSIVE PLAN

New Regional Park Unit / Northwest Anoka County Search Area – The 2030 *Regional Parks Policy Plan* includes three new regional park units needed to serve the expanding population by 2030 throughout the region. The Anoka County Parks Departments will be reviewing the potential for a new park on the west side of the City of St. Francis as a part of their process of updating the County Park System Plan. This new regional park is planned to be located on 1,000 acres likely, but could be up to 2,500 acres. This park unit has been identified as a reserve in order to protect the high quality natural resources found in this area, which are unique in Anoka County. This park is reflected on the City's park plan as the western of the two large scale park complexes.





Regional Park Search Area



Park and Trail Map

Trails

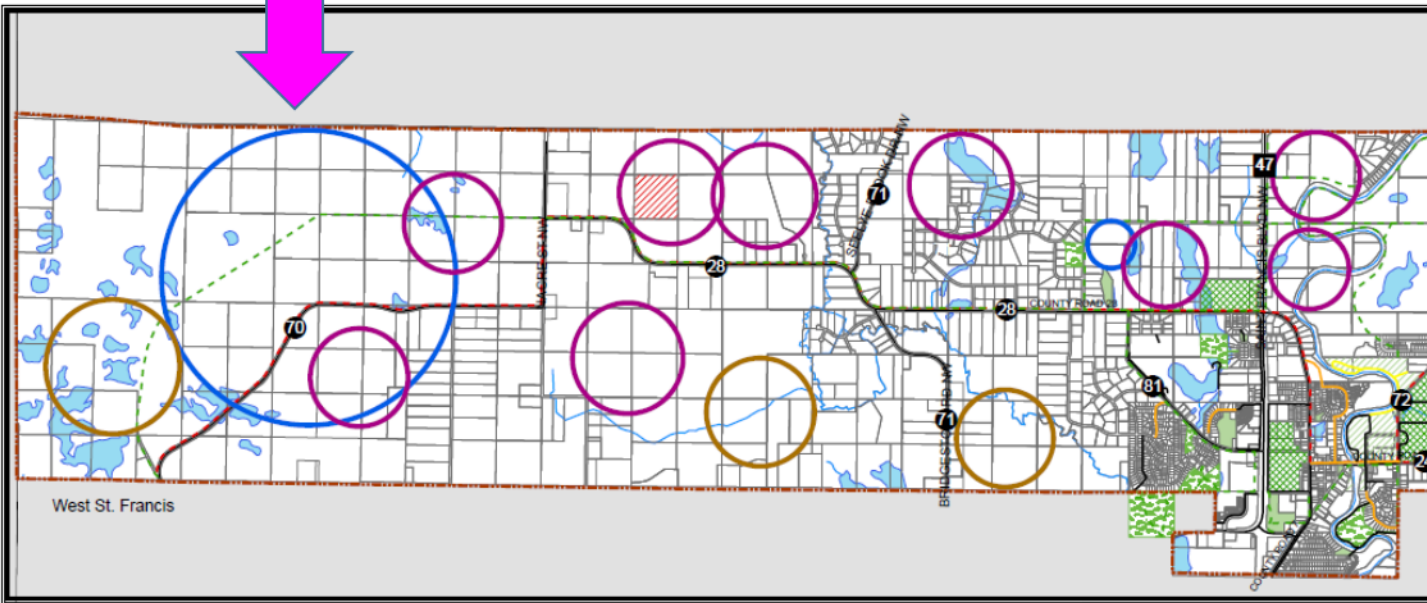
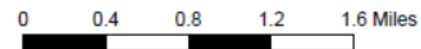
- Existing Bituminous Trail
- Existing Concrete Sidewalk
- Existing Limestone Trail
- Existing Regional Trail
- Future Proposed Trail Segments
- Proposed Regional Trail

Parks

- City Park
- City Park (undeveloped)
- County Park
- School Land
- State Land
- Rivers & Streams
- Protected Waters
- City Boundary

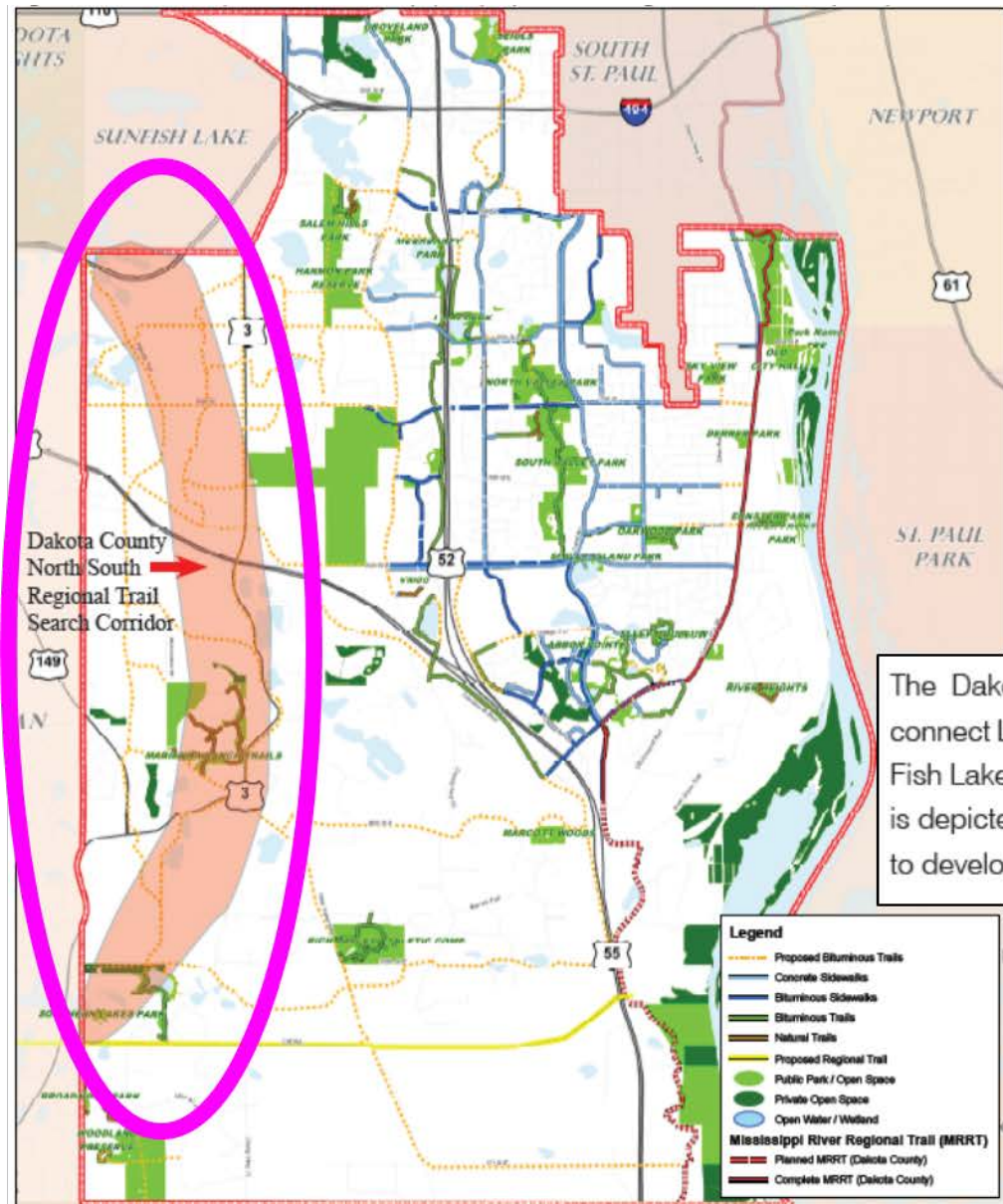
Future Park Search Areas

- Complex
- Mid Size Park
- Small Passive





Regional Trail Search Corridor Example



Dakota County
North South
Regional Trail
Search Corridor

The Dakota County North/South Regional Trail search area is shown to connect Lebanon Hills Regional Park to the South Urban Regional Trail to Sun Fish Lake through Inver Grove Heights. A potential route for the regional trail is depicted on the trail master plan and the City should work with the County to develop this regional trail as development happens in the NW area.

2030 Comprehensive Trail Plan

PlanIt





Regional Parks System

Required Elements for Your Comprehensive Plan (continued)

- If there are no Regional Parks System Facilities in your community, state that fact in your comprehensive plan
- Describe, map, and label the Federal and State recreational lands that are located in your community





Regional Parks System

Required Elements for Your Comprehensive Plan (continued)

- Depict existing regional parkland with a land use of “Park” on your **Existing Land Use Map**.
- Acknowledge the Council-approved boundaries of regional parks, park reserves, and special recreation features by guiding the properties with a land use of “Park” on your **Future Land Use Map**.





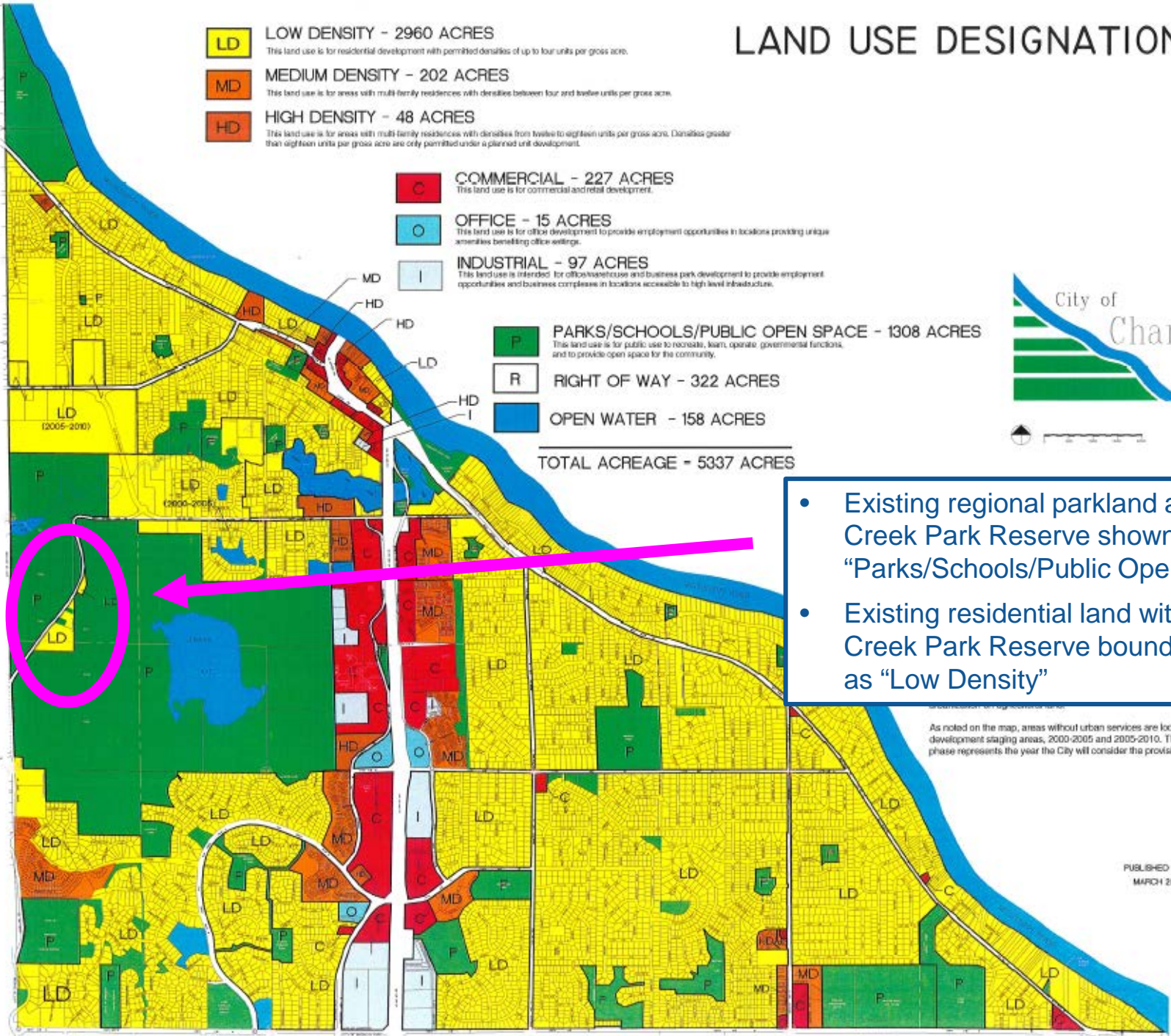
LAND USE DESIGNATIONS

- LD** LOW DENSITY - 2960 ACRES
This land use is for residential development with permitted densities of up to four units per gross acre.
- MD** MEDIUM DENSITY - 202 ACRES
This land use is for areas with multi-family residences with densities between four and twelve units per gross acre.
- HD** HIGH DENSITY - 48 ACRES
This land use is for areas with multi-family residences with densities from twelve to eighteen units per gross acre. Densities greater than eighteen units per gross acre are only permitted under a planned unit development.

- C** COMMERCIAL - 227 ACRES
This land use is for commercial and retail development.
- O** OFFICE - 15 ACRES
This land use is for office development to provide employment opportunities in locations providing unique amenities benefiting office-workers.
- I** INDUSTRIAL - 97 ACRES
This land use is intended for office/warehouse and business park development to provide employment opportunities and business complexes in locations accessible to high level infrastructure.

- P** PARKS/SCHOOLS/PUBLIC OPEN SPACE - 1308 ACRES
This land use is for public use to recreate, learn, operate, governmental functions, and to provide open space for the community.
- R** RIGHT OF WAY - 322 ACRES
- OPEN WATER** - 158 ACRES

TOTAL ACREAGE = 5337 ACRES



- Existing regional parkland at Elm Creek Park Reserve shown as “Parks/Schools/Public Open Space”
- Existing residential land within Elm Creek Park Reserve boundary shown as “Low Density”

As noted on the map, areas without urban services are located two development staging areas, 2000-2005 and 2005-2010. The first year of each phase represents the year the City will consider the provision of urban services.

PUBLISHED DATE
MARCH 2008

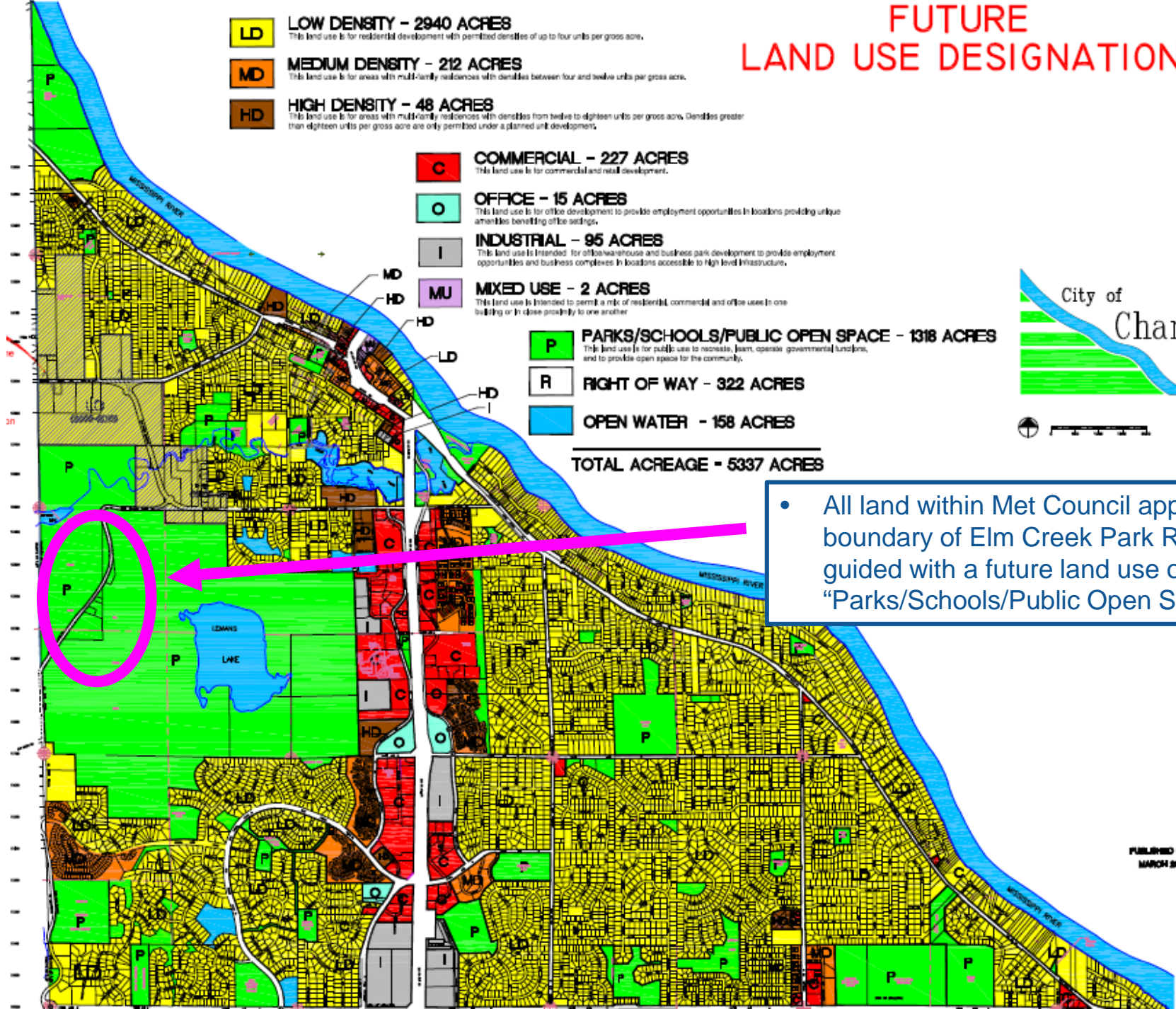
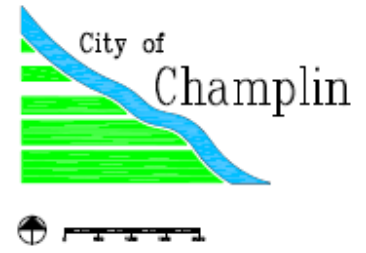
FUTURE LAND USE DESIGNATIONS



- LD LOW DENSITY - 2940 ACRES**
This land use is for residential development with permitted densities of up to four units per gross acre.
- MD MEDIUM DENSITY - 212 ACRES**
This land use is for areas with multi-family residences with densities between four and twelve units per gross acre.
- HD HIGH DENSITY - 48 ACRES**
This land use is for areas with multi-family residences with densities from twelve to eighteen units per gross acre. Densities greater than eighteen units per gross acre are only permitted under a planned unit development.

- C COMMERCIAL - 227 ACRES**
This land use is for commercial and retail development.
- O OFFICE - 15 ACRES**
This land use is for office development to provide employment opportunities in locations providing unique amenities benefiting office settings.
- I INDUSTRIAL - 95 ACRES**
This land use is intended for office/warehouse and business park development to provide employment opportunities and business complexes in locations accessible to high level infrastructure.
- MU MIXED USE - 2 ACRES**
This land use is intended to permit a mix of residential, commercial and office uses in one building or in close proximity to one another.
- P PARKS/SCHOOLS/PUBLIC OPEN SPACE - 1318 ACRES**
This land use is for public use to recreate, learn, operate governmental functions, and to provide open space for the community.
- R RIGHT OF WAY - 322 ACRES**
- OPEN WATER - 158 ACRES**

TOTAL ACREAGE - 5337 ACRES



- All land within Met Council approved boundary of Elm Creek Park Reserve guided with a future land use of "Parks/Schools/Public Open Space"

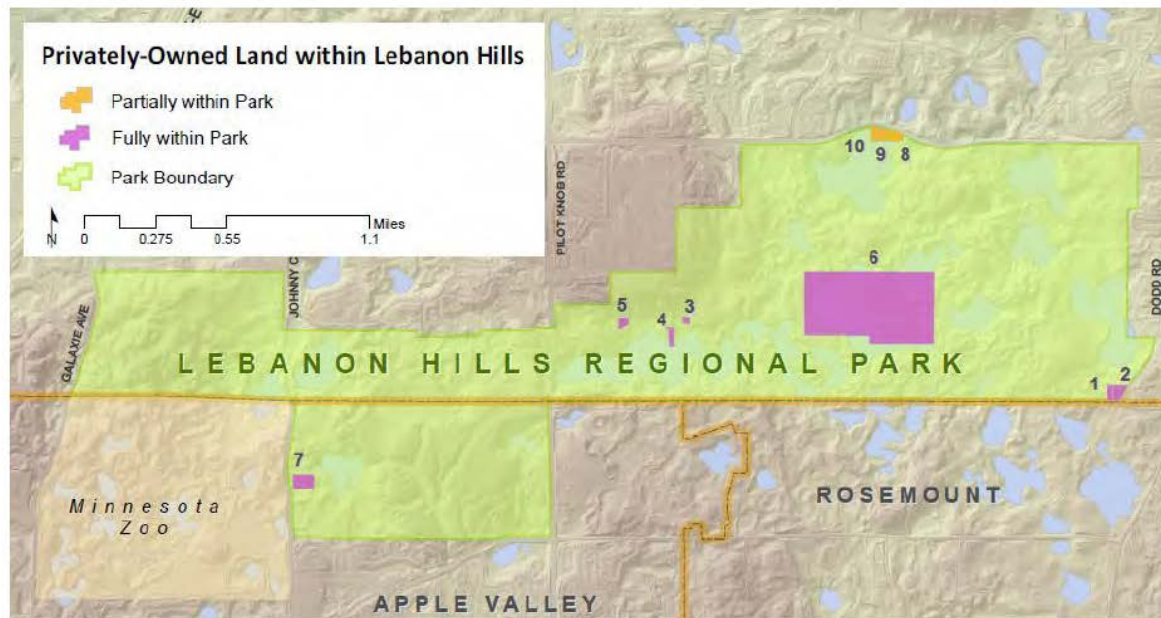
PUBLISHED DATE
MARCH 2008

Vision

In recognition of the surrounding park use, the community envisions these seven (7) properties as part of the Lebanon Hills Regional Park. However, the interim use of these properties as single family residential homes does not negatively impact that vision. The City seeks to allow the occupants of the residences to remain as conforming uses, while not allowing any future subdivision. Thus, to achieve the required land use consistency between the Land Use Plan and Zoning Map, the City has adopted policies to guide the transition of the existing residential use to a future park use.



City of Eagan



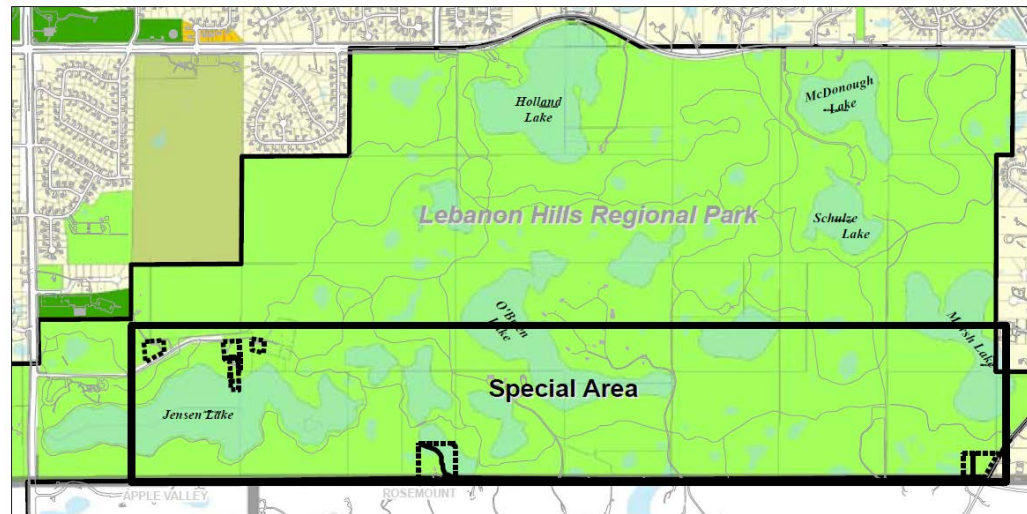
Lebanon Hills Special Area Plan



City of Eagan

Background

The Lebanon Hills Special Area overlays a portion of Lebanon Hills Regional Park located south of Cliff Road between Galaxie Avenue and Dodd Road (along the City's southern municipal boundary). More specifically, the Special Area encompasses seven (7) privately-owned single family residential properties, totalling 18.5 acres, which currently exist within the boundaries of the regional park. The community's intent is for these properties to become a part of the regional park at some point in the future because having private owned residences within the park is contrary to public use. These properties have been designated as a special area to facilitate the transition to that vision.





City of Eagan

Land Use Designation

Recognizing that the purpose of the Land Use Guide Plan is to identify the long-term desired use of property, all parcels in this Special Area have been guided P, Parks and Recreational Open Space.

Land Use/Zoning Designation

While the land use plan and the zoning designation need to be consistent, the City does not want to make these properties subject to the Zoning Ordinance's nonconforming use requirements. In addition, the continued use of these properties as single family homes is deemed consistent on an interim basis. Thus, instead of the P, park zoning designation, which would be consistent with the Land Use Plan, all of the properties will be zoned R-1, Single Family Residential. Under the R-1 zoning designation, existing homes will remain as "conforming" uses. Once the properties are acquired by Dakota County the parcels should be rezoned to P-Park.

PlanIt





Regional Parks System

Considerations for Your Comprehensive Plan

- Collaborate with staff from the regional park implementing agency for your community in the development of your comprehensive plan
- Plan for compatible land uses and buffers adjacent to regional parks system facilities in your community





Local Parks and Trails

Required Elements for Your Comprehensive Plan

- Describe and map your existing and proposed local parks, trails, and recreation facilities
- Include a capital improvement program for parks and open space facilities as part of your implementation plan.





Local Parks and Trails

Considerations for Your Comprehensive Plan

- Identify and include high quality natural resources as part of your local park planning
- Plan local trail connections to regional parks and trails
- Coordinate with adjacent communities in planning for local trails that cross jurisdictional boundaries
- Consider people's changing recreational preferences





Resources

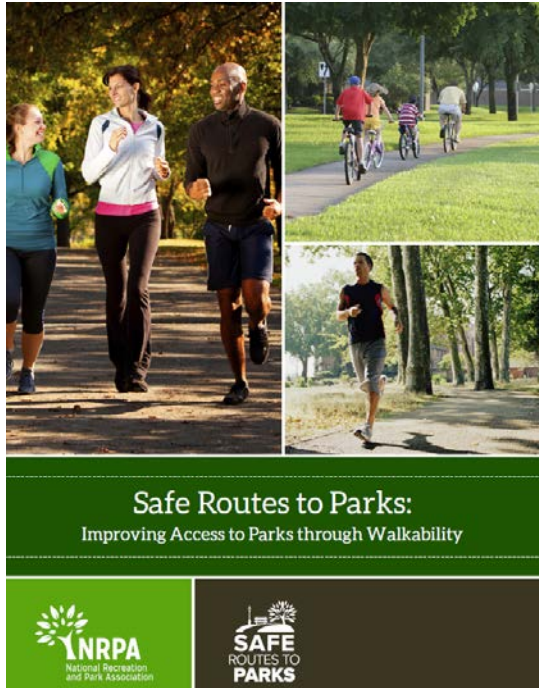
*Classification System for
Local and Regional
Facilities*

GIS Data

*Local Planning
Handbook's Interactive
Mapping Tool*



Resources

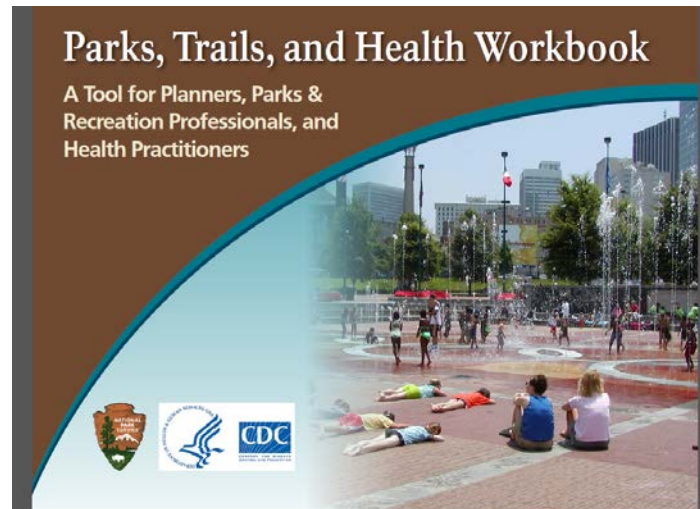


A poster titled "Safe Routes to Parks: Improving Access to Parks through Walkability". It features three photographs: a group of people walking on a path, a group of people cycling on a path, and a person jogging on a path. The poster includes the logo for the National Recreation and Park Association (NRPA) and the "SAFE ROUTES TO PARKS" logo.

Safe Routes to Parks:
Improving Access to Parks through Walkability

NRPA
National Recreation and Park Association

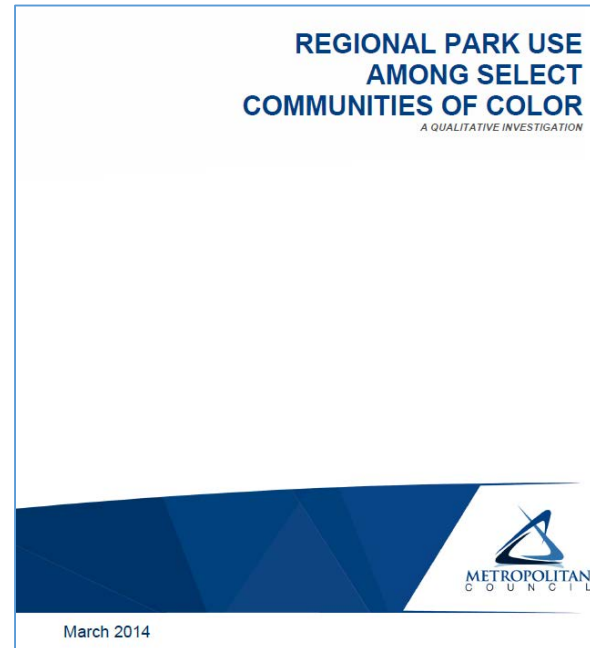
SAFE ROUTES TO PARKS



A workbook cover titled "Parks, Trails, and Health Workbook: A Tool for Planners, Parks & Recreation Professionals, and Health Practitioners". The cover features a photograph of a park with a fountain and people sitting on the ground. Logos for the National Recreation and Park Association, the U.S. Department of Health and Human Services, and the CDC are visible.

Parks, Trails, and Health Workbook
A Tool for Planners, Parks & Recreation Professionals, and Health Practitioners

CDC



A report cover titled "REGIONAL PARK USE AMONG SELECT COMMUNITIES OF COLOR: A QUALITATIVE INVESTIGATION". The cover features a blue geometric design at the bottom and the Metropolitan Council logo.

REGIONAL PARK USE AMONG SELECT COMMUNITIES OF COLOR
A QUALITATIVE INVESTIGATION

METROPOLITAN COUNCIL

March 2014

PlanIt





Resources

**LOCAL PLANNING
HANDBOOK**

<http://metro council.org/Handbook.aspx>

PlanIt

<http://www.metro council.org/Handbook/PlanIt.aspx>

**Community
Pages**

<http://lponline.metro council.state.mn.us/commportal>



Questions?

Jan Youngquist, AICP, Planning Analyst
Jan.Youngquist@metc.state.mn.us

Michael Peterka, Planner
Michael.Peterka@metc.state.mn.us



Upcoming Events

Transit Planning Basics, Market Areas, and Comprehensive Planning

Presented by Mike Larson and Michael Mechtenberg

Thursday, September 22, 2016

Local Planning, the Regional Bicycle Transportation Network & Regional Trails

Presented by Steve Elmer and Jan Youngquist

Thursday, October 13, 2016

Housing Requirements Discussion

Presented by Lisa Barajas

Thursday, October 27, 2016