



TRANSPORTATION POLICY PLAN

Chapter 2: Transportation Strategies

2040





TRANSPORTATION POLICY PLAN

Chapter 2: Transportation Policy Plan Strategies

● Transportation Policy Plan Strategies	2.4
● A. Transportation System Stewardship	2.17
● B. Safety and Security	2.20
● C. Access to Destinations	2.24
● D. Competitive Economy	2.38
● E. Healthy Environment	2.42
● F. Leveraging Transportation Investments to Guide Land Use	2.48



Transportation Policy Plan Strategies



Current federal transportation legislation, Moving Ahead for Progress in the 21st Century Act (MAP-21), mandates a streamlined and performance-based process for transportation planning, implementation, and assessment that shows how it will meet national transportation goals. National goals include:

- Increasing safety
- Maintaining infrastructure in a state of good repair
- Reducing congestion
- Improving efficiency and reliability
- Creating environmental sustainability, and
- Reducing project delays.

The legislation also requires metropolitan regions to use a performance-based planning process when identifying how transportation funds will be allocated and to assess progress towards meeting national and regional goals.

This Transportation Policy Plan responds to this mandate in its regional transportation goals and objectives that address and go beyond federal goals to align with the region's new metropolitan development guide, *Thrive MSP 2040*. Regional transportation goals and objectives are summarized in the [Overview](#), "Transportation for a Thriving Region". This section elaborates on those strategies that address how the region will make progress toward achieving the transportation goals and objectives. The strategies identify specific actions, along with responsible actors, that will be taken to help achieve the region's transportation goals.

While the goals and objectives are new to this Transportation Policy Plan, many of the strategies are not entirely new; they represent re-ordered content from the *2030 Transportation Policy Plan*. A large number of these strategies have existed in some form for the past several versions of the plan, although some have been combined or re-phrased to better fit the new format of this plan. As a result, the Council and its regional transportation partners have been advancing the work described in many of them for years. The strategies are organized under a specific transportation goal, but in many instances, a strategy may work toward achieving multiple transportation goals. The term “regional transportation partners” is frequently used in the strategies to broadly include all public entities within the region with responsibility for planning, implementing or maintaining the transportation system including the Council, MnDOT, counties, cities, townships, transit providers, airport sponsors and others.

Supportive local actions indicate how local governments, primarily cities, might have a role in supporting the strategy at the local level. Generally, the supportive local actions are meant to be advisory – indicating best practices or implementation methods that might be used to support the strategy. Most of the strategies in the section “Leverage Transportation Investments to Guide Land Use strategies” supportive local actions are already focused on local government actions, providing guidance for the development of local comprehensive plans and local transportation system planning.

The actions in these strategies reflect statutory requirements, positive actions, and best practices that advance the transportation system goals and objectives of the Transportation Policy Plan and help meet the federal requirements for a regional performance-based plan. Some of the strategies state that actors “will” do something, and others suggest that actors “should” do something. “Will” statements are positive actions that support the work of the Council and its partners in developing and implementing an effective regional transportation system. “Should” statements are recommendations directed primarily to local governments regarding their own investment and land use decisions. These strategies are provided as best practices or suggestions to guide local planning priorities and considerations. Only one strategy (F1) is a “must” statement, reflecting the statutory authority of the Council to review the transportation elements of local comprehensive plans.

The following matrix includes the full list of goals, objectives and associated strategies.

Table 2-1: Summary matrix of goals, objectives and associated strategies

Goal	Objectives	Strategies
<p>A. Transportation System Stewardship</p> <p><i>Goal Statement</i></p> <p><i>Sustainable investments in the transportation system are protected by strategically preserving, maintaining, and operating system assets.</i></p>	<ul style="list-style-type: none"> • Efficiently preserve and maintain the regional transportation system in a state of good repair. • Operate the regional transportation system to efficiently and cost-effectively connect people and freight to destinations 	<p>A1. Regional transportation partners will place the highest priority for transportation investments on strategically preserving, maintaining, and operating the transportation system.</p> <p>A2. Regional transportation partners should regularly review planned preservation and maintenance projects to identify cost-effective opportunities to incorporate improvements for safety, lower-cost congestion management and mitigation, transit, bicycle, and pedestrian facilities.</p> <p>A3. The Council and regional transit providers will use regional transit design guidelines and performance standards, as appropriate based on Transit Market Areas, to manage the transit network, to respond to demand, and balance performance and geographic coverage.</p> <p>A4. Airport sponsors will prepare a long-term comprehensive plan (LTCP) for each airport every five years and submit it to the Metropolitan Council for review to ensure that plans for preservation, management and improvement of infrastructure at each airport are consistent with the regional aviation system plan.</p>

Table 2-1: Summary matrix of goals, objectives and associated strategies

Goal	Objectives	Strategies
<p>B. Safety and Security</p> <p><i>Goal Statement</i></p> <p><i>The regional transportation system is safe and secure for all users.</i></p>	<ul style="list-style-type: none"> • Reduce crashes and improve safety and security for all modes of passenger travel and freight transport. • Reduce the transportation system’s vulnerability to natural and man-made incidents and threats. 	<p>B1. Regional transportation partners will incorporate safety and security considerations for all modes and users throughout the processes of planning, funding, construction, operation.</p>
		<p>B2. Regional transportation partners should work with local, state, and federal public safety officials, including emergency responders, to protect and strengthen the role of the regional transportation system in providing security and effective emergency response to serious incidents and threats.</p>
		<p>B3. Regional transportation partners should monitor and routinely analyze safety and security data by mode and severity to identify priorities and progress.</p>
		<p>B4. Regional transportation partners will support the state’s vision of moving toward zero traffic fatalities and serious injuries, which includes supporting educational and enforcement programs to increase awareness of regional safety issues, shared responsibility, and safe behavior.</p>
		<p>B5. The Council and regional transit providers will provide transit police services and coordinate with public safety agencies to provide a collaborative approach to safety and security.</p>
		<p>B6. Regional transportation partners will use best practices to provide and improve facilities for safe walking and bicycling, since pedestrians and bicyclists are the most vulnerable users of the transportation system.</p>
		<p>B7. Airport sponsors and air service providers will provide facilities that are safe, secure and technologically current.</p>

Table 2-1: Summary matrix of goals, objectives and associated strategies

Goal	Objectives	Strategies
<p>C. Access to Destinations</p> <p><i>Goal Statement</i></p> <p><i>People and businesses prosper by using a reliable, affordable, and efficient multimodal transportation system that connects them to destinations throughout the region and beyond.</i></p>	<ul style="list-style-type: none"> • Increase the availability of multimodal travel options, especially in congested highway corridors. 	<p>C1. Regional transportation partners will continue to work together to plan and implement transportation systems that are multimodal and provide connections between modes. The Council will prioritize regional projects that are multimodal and cost-effective and encourage investments to include appropriate provisions for bicycle and pedestrian travel.</p>
	<ul style="list-style-type: none"> • Increase travel time reliability and predictability for travel on highway and transit systems. 	<p>C2. Local units of government should provide a system of interconnected arterial roads, streets, bicycle facilities, and pedestrian facilities to meet local travel needs using Complete Streets principles.</p>
	<ul style="list-style-type: none"> • Ensure access to freight terminals such as river ports, airports, and intermodal rail yards. 	<p>C3. The Council, working with MnDOT through their Enhancing Financial Effectiveness (EFE) efforts, and other relevant jurisdictions, will continue to maintain a Congestion Management Process for the region’s principal arterials to meet federal requirements. The Congestion Management Process will incorporate and coordinate the various activities of MnDOT, transit providers, counties, cities and transportation management organizations to increase the multimodal efficiency and people-moving capacity of the National Highway System.</p>
	<ul style="list-style-type: none"> • Increase transit ridership and the share of trips taken using transit, bicycling and walking. 	<p>C4. Regional transportation partners will promote multimodal travel options and alternatives to single-occupant vehicle travel and highway congestion through a variety of travel demand management initiatives, with a focus on major job, activity, and industrial and manufacturing concentrations on congested highway corridors and corridors served by regional transit service.</p>
	<ul style="list-style-type: none"> • Improve multimodal travel options for people of all ages and abilities to connect to jobs and other opportunities, particularly for historically under-represented populations. 	<p>C5. The Council will work with MnDOT and local governments to implement a system of MnPASS lanes and transit advantages that support fast, reliable alternatives to single-occupancy vehicle travel in congested highway corridors.</p>

Table 2-1: Summary matrix of goals, objectives and associated strategies

Goal	Objectives	Strategies
		<p>C6. The Council will support an interagency approach to preserving right-of-way for future transportation projects that are consistent with the Transportation Policy Plan.</p>
		<p>C7. Regional transportation partners will manage and optimize the performance of the principal arterial system as measured by person throughput.</p>
		<p>C8. Regional transportation partners will prioritize all regional highway capital investments based on a project’s expected contributions to achieving the outcomes, goals, and objectives identified in <i>Thrive MSP 2040</i> and the Transportation Policy Plan.</p>
		<p>C9. The Council will support investments in A-minor arterials that build, manage, or improve the system’s ability to supplement the capacity of the principal arterial system and support access to the region’s job, activity, and industrial and manufacturing concentrations.</p>
		<p>C10. Regional transportation partners will manage access to principal and A-minor arterials to preserve and enhance their safety and capacity. The Council will work with MnDOT to review interchange requests for the principal arterial system.</p>
		<p>C11. The Council and regional transit providers will expand and modernize transit service, facilities, systems, and technology, to meet growing demand, improve the customer experience, improve access to destinations, and maximize the efficiency of investments.</p>
		<p>C12. Regional transportation partners will invest in an expanded network of transitways that includes but is not limited to bus rapid transit, light rail, and commuter rail. Transitway investments will be prioritized based on factors that measure a project’s expected contributions to achieving the outcomes, goals, and objectives identified in <i>Thrive MSP 2040</i> and the Transportation Policy Plan.</p>

Table 2-1: Summary matrix of goals, objectives and associated strategies

Goal	Objectives	Strategies
		C13. The Council will provide paratransit service complementary to the region’s regular route transit system for individuals who are certified by the Council under the Americans with Disabilities Act (ADA).
		C14. The Council and regional transit providers will provide coordinated transit options, including general public dial-a-ride and vanpool subsidies, in areas of the region not served by regular-route transit. Service levels for these options will be based on available resources and needs.
		C15. Regional transportation partners should focus investments on completing Priority Regional Bicycle Transportation Corridors and on improving the larger Regional Bicycle Transportation Network.
		C16. Regional transportation partners should fund projects that provide for bicycle and pedestrian travel across or around physical barriers and/or improve continuity between jurisdictions.
		C17. Regional transportation partners will provide or encourage reliable, cost-effective, and accessible transportation choices that provide and enhance access to employment, housing, education, and social connections for pedestrians and people with disabilities.
		C18. The Council, MnDOT, regional railroad authorities, and railroad companies will pursue short- and long-term improvements to accommodate future freight and passenger rail demand.
		C19. The Council and MnDOT should work together with cities and counties to provide efficient connections from major freight terminals and facilities to the regional highway system, including the federally designated Primary Freight Network.

Table 2-1: Summary matrix of goals, objectives and associated strategies

Goal	Objectives	Strategies
		<p>C20. The Council and airport sponsors will maintain a system of reliever airports to augment the Minneapolis-Saint Paul International Airport that are accessible within reasonable travel times from all parts of the metropolitan area.</p>
<p>D. Competitive Economy</p> <p><i>Goal Statement</i></p> <p><i>The regional transportation system supports the economic competitiveness, vitality, and prosperity of the region and state.</i></p>	<ul style="list-style-type: none"> • Improve multimodal access to regional job concentrations identified in <i>Thrive MSP 2040</i>. • Invest in a multimodal transportation system to attract and retain businesses and residents. • Support the region’s economic competitiveness through the efficient movement of freight. 	<p>D1. The Council and its transportation partners will identify and pursue the level of increased funding needed to create a multimodal transportation system that is safe, well-maintained, offers modal choices, manages and eases congestion, provides reliable access to jobs and opportunities, facilitates the shipping of freight, connects and enhances communities, and shares benefits and impacts equitably among all communities and users.</p> <p>D2. The Council will coordinate with other agencies planning and pursuing transportation investments that strengthen connections to other regions in Minnesota and the Upper Midwest, the nation, and world including intercity bus and passenger rail, highway corridors, air service, and freight infrastructure.</p> <p>D3. The Council and its partners will invest in regional transit and bicycle systems that improve connections to jobs and opportunity, promote economic development, and attract and retain businesses and workers in the region on the established transit corridors.</p> <p>D4. The Council, MnDOT, and local governments will invest in a transportation system that provides travel conditions that compete well with peer metropolitan areas.</p> <p>D5. The Council and MnDOT will work with transportation partners to identify the impacts of highway congestion on freight and identify cost-effective mitigation.</p>

Table 2-1: Summary matrix of goals, objectives and associated strategies

Goal	Objectives	Strategies
		<p>D6. The Council, Metropolitan Airports Commission, MnDOT, and other agencies will work together to maintain a strong regional airport system, including maintaining the Minneapolis-Saint Paul International Airport as a major national and international passenger hub and reliever airports that serve business travel.</p> <p>D7. The Metropolitan Airports Commission should periodically update its airport economic impact studies and commercial air-service competition plan to determine facility and service improvements needed at the region's airports to foster a competitive regional economy.</p>
<p>E. Healthy Environment</p> <p><i>Goal Statement</i></p> <p><i>The regional transportation system advances equity and contributes to communities' livability and sustainability while protecting the natural, cultural, and developed environments.</i></p>	<ul style="list-style-type: none"> • Reduce transportation-related air emissions. • Reduce impacts of transportation construction, operations, and use on the natural, cultural, and developed environments. • Increase the availability and attractiveness of transit, bicycling, and walking to encourage healthy communities and active car-free lifestyles. 	<p>E1. Regional transportation partners recognize the role of transportation choices in reducing emissions and will support state and regional goals for reducing greenhouse gas and air pollutant emissions. The Council will provide information and technical assistance to local governments in measuring and reducing transportation-related emissions.</p> <p>E2. The Council and MnDOT will consider reductions in transportation-related emissions of air pollutants and greenhouse gases when prioritizing transportation investments.</p> <p>E3. Regional transportation partners will plan and implement a transportation system that considers the needs of all potential users, including children, senior citizens, and persons with disabilities, and that promotes active lifestyles and cohesive communities. A special emphasis should be placed on promoting the environmental and health benefits of alternatives to single-occupancy vehicle travel.</p>

Table 2-1: Summary matrix of goals, objectives and associated strategies

Goal	Objectives	Strategies
	<ul style="list-style-type: none"> • Provide a transportation system that promotes community cohesion and connectivity for people of all ages and abilities, particularly for historically under-represented populations. 	<p>E4. Regional transportation partners will protect, enhance and mitigate impacts on natural resources when planning, constructing, and operating transportation systems. This will include management of air and water quality and identification of priority natural resources through the Natural Resources Inventory developed by the Council and Minnesota Department of Natural Resources.</p> <p>E5. Transportation partners will protect, enhance and mitigate impacts on the cultural and built environments when planning, constructing, and operating transportation systems.</p> <p>E6. Regional transportation partners will use a variety of communication methods and eliminate barriers to foster public engagement in transportation planning that will include special efforts to engage members of historically underrepresented communities, including communities of color, low-income communities, and those with disabilities to ensure that their concerns and issues are considered in regional and local transportation decision making.</p> <p>E7. Regional transportation partners will avoid, minimize and mitigate disproportionately high and adverse impacts of transportation projects to the region’s historically underrepresented communities, including communities of color, low-income communities, and those with disabilities.</p>

Table 2-1: Summary matrix of goals, objectives and associated strategies

Goal	Objectives	Strategies
<p>F. Leveraging Transportation Investments to Guide Land Use</p> <p><i>Goal Statement</i></p> <p><i>The region leverages transportation investments to guide land use and development patterns that advance the regional vision of stewardship, prosperity, livability, equity, and sustainability.</i></p>	<ul style="list-style-type: none"> • Focus regional growth in areas that support the full range of multimodal travel. • Maintain adequate highway, riverfront, and rail-accessible land to meet existing and future demand for freight movement. • Encourage local land use design that integrates highways, streets, transit, walking, and bicycling. • Encourage communities, businesses and aviation interests to collaborate on limiting incompatible land uses that would limit the use of the region's airports. 	<p>F1. Local governments within the seven-county metropolitan area must prepare comprehensive plans that conform to the Transportation Policy Plan and should recognize the land use and transportation opportunities and challenges that correspond to <i>Thrive MSP 2040</i> planning areas.</p>
		<p>Local governments within the Metropolitan Urban Service Area should plan for their projected growth and stage their transportation infrastructure to accommodate the needs of that growth.</p>
		<p>Local governments in the Rural Service Area should plan for transportation systems and land use patterns that are compatible with the protection of agricultural uses and the need for future sewered development.</p>
		<p>F2. Local governments should plan for increased density and a diversification of uses in job concentrations, nodes along corridors, and local centers to maximize the effectiveness of the transportation system.</p>
<p>F3. Metropolitan Council, MnDOT, and local governments will plan, build, operate, maintain, and rebuild an adequate system of interconnected highways and local roads.</p>		

Table 2-1: Summary matrix of goals, objectives and associated strategies

Goal	Objectives	Strategies
		<p>F4. Local governments will identify opportunities for and adopt guiding land use policies that support future growth around transit stations and near high-frequency transit service. The Council will work with local governments in this effort by providing technical assistance and coordinating the implementation of transit-oriented development. The Council will also prioritize investments in transit expansion in areas where infrastructure and development patterns to support a successful transit system are either in place or committed to in the planning or development process.</p> <p>F5. Local governments should lead planning efforts for land use in transit-oriented station areas, small-areas, or corridors, with the support of the Council and other stakeholders.</p> <p>F6. Local governments should adopt policies, develop partnerships, identify resources, and consider regulatory tools to support and specifically address the opportunities and challenges related to creating walkable, bikeable, transit-friendly places.</p> <p>F7. Local governments should include bicycle and pedestrian elements in local comprehensive plans.</p> <p>F8. Local governments should adopt comprehensive plans that include policies emphasizing identifying and improving roads best suited for carrying trucks while minimizing impacts such as noise and traffic to sensitive land uses.</p> <p>F9. Local governments should balance the needs of industrial, residential and recreational users when planning and implementing land uses along the navigable portions of the Mississippi River system to ensure sufficient access for existing and future barge transportation needs.</p>

Table 2-1: Summary matrix of goals, objectives and associated strategies

Goal	Objectives	Strategies
		<p>F10. Local governments should consider the role of railroads in promoting economic activity and identify an adequate supply of land in their comprehensive plans to meet existing and future demand for industrial uses requiring rail access.</p>
		<p>F11. Local governments located near all of the region's airports should address land use compatibility and air safety requirements in their comprehensive plans.</p>
		<p>F12. Communities affected by aircraft noise should incorporate the Land Use Compatibility Guidelines for Aircraft Noise into their local comprehensive plans and ordinances.</p>
		<p>F13. Local governments should minimize potential general airspace hazards by adopting federal and state regulations regarding airspace and notifying potential developers of the need to submit FAA form 7460-1 regarding structure height near an airport.</p>

A. Transportation System Stewardship

Goal:

Sustainable investments in the transportation system are protected by strategically preserving, maintaining, and operating system assets.

Objectives:

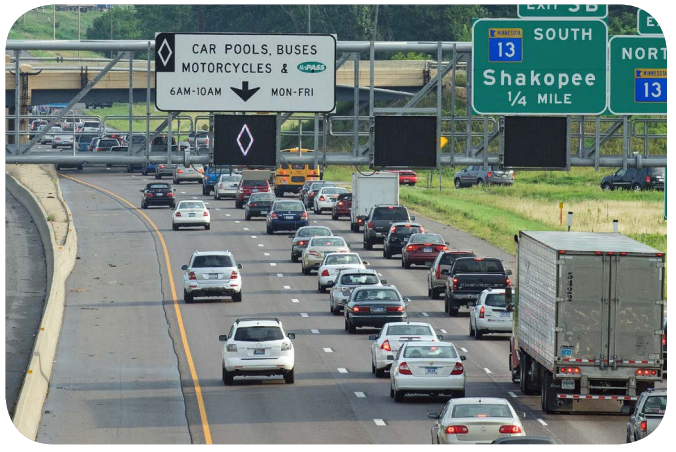
- A. Efficiently preserve and maintain the regional transportation system in a state of good repair.
- B. Operate the regional transportation system to efficiently and cost-effectively move people and freight.

Strategies:

A1. Regional transportation partners will place the highest priority for transportation investments on strategically preserving, maintaining, and operating the transportation system.

The regional transportation system represents an enormous public investment that is essential to our economy and quality of life. Protecting this investment means maintaining the entire system in a state of good repair. Doing so ensures that infrastructure and all facilities and equipment function well for their entire design life and minimize costs over their life cycle.

The federal legislation Moving Ahead for Progress in the 21st Century Act (MAP-21) also recognized the importance of maintaining the existing transportation system. One of the seven national goals on which the federal-aid highway program should focus is infrastructure condition. In that area the national goal is to maintain the highway infrastructure asset system in a state of good repair. The USDOT will develop measures by which states can assess the condition of pavements on the Interstate highways and National Highway



System and the condition of bridges on the National Highway System. These measures are scheduled to be released in the second quarter of 2015. Collecting data is important to the efficient preservation, maintenance and operation of all modes and allows for making strategic and timely investments. For example, deferring pavement maintenance can result in higher long-term needed investment in the pavement.

Preserving and maintaining the roadway system applies to bridges and roadway pavement, on-street bicycle facilities and adjacent trails within roadway rights-of-way, as well as all roadside infrastructure such as lighting, traffic signals, noise walls, and drainage systems.

Preserving and maintaining the transit system includes maintaining and replacing vehicles and equipment at consistent intervals, preserving the function and positive customer experience at customer facilities, and maintaining efficient support facilities.

Airport-related investments by public and private sectors in the region should focus on continued development of Minneapolis-Saint Paul International Airport as a major national and international hub. Investments should maximize the operational effectiveness and value of aviation services and airport infrastructure. For regional airports, airport sponsors should maintain and enhance existing facilities to their maximum capability before investing in new facilities.

Supportive local actions:

- Cooperate with MnDOT, regional transit providers, and regional parks implementing agencies in maintaining and operating shared and multimodal transportation facilities, including setting priorities for snow, ice and debris removal.

A2. Regional transportation partners should regularly review planned preservation and maintenance projects to identify cost-effective opportunities to incorporate improvements for safety, lower-cost congestion management and mitigation, transit, bicycle, and pedestrian facilities.

MnDOT should continue to regularly review highway maintenance and reconstruction projects to identify opportunities to integrate safety and lower-cost highway congestion management and mitigation. A similar approach should be used by cities and counties as they undertake local highway projects.

Regional transit providers should review preservation and maintenance projects to identify opportunities to improve the transit system and its integration with other systems. In addition, technology and design improvements in transit systems can be incorporated into maintenance, preservation, or replacement projects to provide a better customer experience or more efficient system.

Airport sponsors and air-service providers should establish airport business plans and agreements to deliver high-quality services at affordable prices to users. Airport sponsors should operate within a long-term financial plan that stresses maximizing non-regional funding sources to avoid or minimize financial impacts on regional taxpayers and maintaining a high bond rating for aviation improvements.



Supportive local actions:

- Plan and implement bicycle and pedestrian improvements as part of roadway projects. Where these travel options are needed and can be safely provided, this approach can take advantage of cost-effective opportunities to provide for pedestrian sidewalks or trails, on-street bicycle lanes, signage, improved signal timing and other improvements.

Coordinate preservation and maintenance projects with MnDOT, regional transit providers and other affected local governments when locally planned projects affect their systems.

A3. The Council and regional transit providers will use regional transit design guidelines and performance standards, as appropriate based on Transit Market Areas, to manage the transit network, to respond to demand, and balance performance and geographic coverage.

The Council and regional transit providers will look for opportunities to reinvest resources from underperforming routes and areas to those routes meeting regional transit performance standards and demonstrating demand for additional investment. When managing the transit system, the Council and regional transit providers will consider input from local communities, existing and potential riders, and the business community, and also consider the impacts and benefits to low-income groups and people of color.

The Council and regional transit providers will also look for opportunities to improve the performance of the transit system and adapt to current conditions by managing routes to meet regional transit performance standards. As the transit system continues to expand, new and improved routes and services will also be evaluated against regional transit performance standards. Transit design guidelines and performance standards are included in [Appendix G](#).

Supportive local actions:

- Work with transit providers to identify route changes that will better suit community needs.

A4. Airport sponsors will prepare a long-term comprehensive plan (LTCP) for each airport every five years and submit it to the Metropolitan Council for review to ensure that plans for preservation, management and improvement of infrastructure at each airport are consistent with the regional aviation system plan.

Regional aviation facilities are under various types of public and private ownership. The scope, application and content of a long-term comprehensive plan is defined for different sponsors in [Appendix K](#). If a substantial change to the approved plan is deemed necessary and cannot be addressed as part of the regular update, the long-term comprehensive plan should be amended.

B. Safety and Security

Goal:

The regional transportation system is safe and secure for all users.

Objectives:

A. Reduce crashes and improve safety and security for all modes of passenger travel and freight transport.

B. Reduce the transportation system's vulnerability to natural and man-made incidents and threats.

Strategies:

B1. Regional transportation partners will incorporate safety and security considerations for all modes and users throughout the processes of planning, funding, construction, operation.

Crashes resulting in fatal and serious injury are the major highway safety concern. The state and counties have done much work on this issue in recent years, producing the Minnesota Strategic Highway Safety Plan (MSHSP) and county highway safety plans. These resources should be considered in developing roadway improvements.

The major transit safety concerns include addressing accidents involving transit vehicles, especially light rail and commuter rail trains. Providing safe crossing of rail transit facilities is important in designing rail systems. Regional transit providers will emphasize improvements to areas with high vehicle crash rates. Additional details on transit security are discussed in Strategy B5.

As the most vulnerable users of the transportation system, pedestrians and bicyclists should be included in roadway and transit planning and project development. Additional information on improving safety for pedestrians and bicyclists is included in Strategy B6.

Safety is the number one priority in planning and developing aviation facilities and services. While the Federal Aviation Administration is responsible for safety of the airspace, all levels of government should work together to ensure that only appropriate land uses are allowed in runway approach areas.



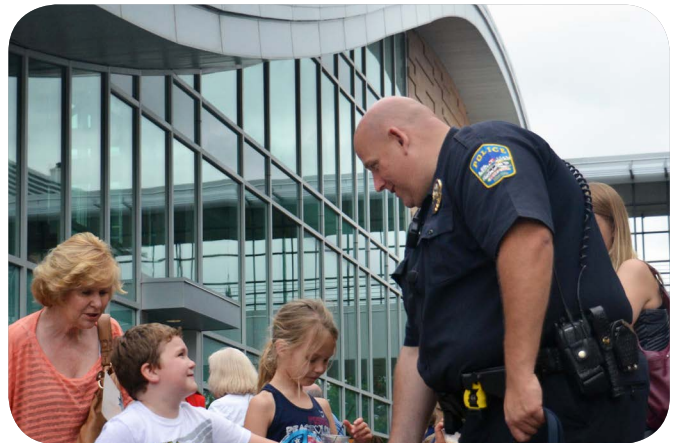
Supportive local actions:

- Address safety and security considerations in planning and implementing the local transportation system.
- Adopt local ordinances controlling all tall structures 250 feet or more to minimize potential general airspace hazards.

B2. Regional transportation partners should work with local, state, and federal public safety officials, including emergency responders, to protect and strengthen the role of the regional transportation system in providing security and effective emergency response to serious incidents and threats.

Regional transportation partners should consider security needs as contained in federal directives when planning, constructing and operating facilities for all modes of transportation.

The region's highways are crucial when responding to emergencies involving fire, ambulance, disaster, and evacuation. Principal and minor arterials provide valuable alternate routes as essential redundancy for responding to emergencies. For example, I- 94, I-694 and Trunk Highways 280 and 100 provided critical highway and bus transit capacity during the I-35W bridge collapse and reconstruction.



Regional transit providers can also play an important role in emergency response, such as moving people away from a dangerous situation or area and providing safe shelter in transit vehicles or major customer facilities.

Supportive local actions:

- Participate in multi-agency efforts to plan and prepare for transportation emergency response.

B3. Regional transportation partners should monitor and routinely analyze safety and security data by mode and severity to identify priorities and progress.

The State of Minnesota – MnDOT, Department of Public Safety, and Department of Health – regional transit providers, counties, and cities are doing important work in identifying, prioritizing, and addressing traffic and transit safety issues. The Council will continue to support these traffic and transit safety efforts, including direction provided in the Minnesota Strategic Highway Safety Plan, county highway safety plans, county transportation plans, local comprehensive plans, and regional transit provider operations. The Council will initiate a new effort to translate the data and many efforts into safety priorities that address the highest needs for all modes for the metropolitan area. Transit providers will monitor the state of good repair for facilities and other investments to ensure safety for passengers, operators, and other staff.

Supportive local actions:

- Maintain, monitor, and routinely analyze local safety and security data to identify priorities for investment and coordinate this data with regional efforts.

B4. Regional transportation partners will support the state’s vision of moving toward zero traffic fatalities and serious injuries, which includes supporting educational and enforcement programs to increase awareness of regional safety issues, shared responsibility, and safe behavior.



While engineering and emergency response are important for highway safety, other important areas include education, enforcement and legislation. Efforts in these areas are typically led by agencies whose jurisdiction extends beyond transportation, but transportation entities can be important partners in these efforts. The Department of Public Safety leads state education efforts focused on giving drivers information they need to avoid hazardous driving practices and choose responsible behavior. Enforcement efforts focus on ensuring compliance with traffic laws to change driver behavior and reduce unsafe driving practices. In recent years, key highway safety education, enforcement, and legislative efforts have focused on aggressive driving, distracted driving, speeding, impaired driving, reducing the number of people traveling without seatbelts or appropriate car seats, and motorcycle driver training.

In addition to general traffic safety, local and state agencies are encouraged to coordinate with state safety efforts to educate the public in the proper use of sidewalks and crosswalks by pedestrians and proper use of shared lanes, bicycle lanes and trails by bicyclists. These safety programs include the “Safe Routes to School” programs that promote bicycling and walking safety for school students. Programs should educate motorists regarding bicycle and pedestrian roadway and trail crossing laws (including intersection and mid-block crossings), how to safely interact with bicyclists riding legally in the roadway, and to be aware of pedestrians and bicyclists.

B5. The Council and regional transit providers will provide transit police services and coordinate with public safety agencies to provide a collaborative approach to safety and security.

The transit system employs and carries large numbers of people and can be both an important system in responding to threats, and a target for serious threats. An important emphasis for the transit system is responding to safety and security concerns in a timely manner. The transit system covers a large geographic area, and many jurisdictions and incidents often occur on moving vehicles. This requires significant coordination between transit providers and public safety agencies. Most of the transit system is supported by Metro Transit Police, which is dedicated to providing police services to transit safety and security. In addition to Metro Transit

Police, all regional transit providers coordinate with local public safety agencies, ensuring a safe and secure environment in and around the transit system.

The transit system also has security systems to monitor possible threats to people on and around transit vehicles and facilities. This system will continue to play an important role in improving the real and the perceived safety and security for transit employees and customers.

Supportive local actions:

- Coordinate local public safety agencies with regional transit providers to respond to incidents on the regional transit system.
- Use local public events as an opportunity to educate residents about potential security threats and natural disaster response procedures.

B6. Regional transportation partners will use best practices to provide and improve facilities for safe walking and bicycling, since pedestrians and bicyclists are the most vulnerable users of the transportation system.

Many best practice guidelines for planning and design are available for improving bicycling and walking safety and general experience. Some of the more pertinent guides include:

- Minnesota’s Best Practices for Pedestrian/Bicycle Safety (MnDOT, 2013)
- Best Practices Synthesis and Guidance in At-Grade Trail-Crossing Treatments (MnDOT, 2013)
- Guide for the Development of Bicycle Facilities, 4th ed. (American Association of State Highway Transportation Officials, 2012)
- Urban Street Design Guide (National Association of City Transportation Officials, 2013)

Intersections and pedestrian crossings (including intersection crossings, mid-block crossings, and trail crossings) pose key issues for drivers, bicyclists, and pedestrians. Safe rail crossings are particularly important for transit customers at light rail and commuter rail stops, since these are some of the busiest crossing points in the region. Transit providers and local governments should work together to design and provide effective and safe crossings, and to discourage bike and pedestrian crossings at unauthorized locations.

Supportive local actions:

- Coordinate with Metro Transit and other rail providers to improve safe crossings of rail facilities.
- Incorporate bicycle and pedestrian facilities in local plans.
- Use best practices to enhance bicycle and pedestrian safety.

B7. Airport sponsors and air service providers will provide facilities that are safe, secure and technologically current.

The regional aviation system is essential to the regional economy and should be developed, operated, and maintained to appropriate standards, to include making necessary improvements to the air traffic control system. Airport sponsors should provide facilities that are safe and secure, affordable, and technologically current for all facets of the aviation industry.

C. Access to Destinations

Goal:

People and businesses prosper by using a reliable, affordable, and efficient multimodal transportation system that connects them to destinations throughout the region and beyond.

Objectives:

A. Increase the availability of multimodal travel options, especially in congested highway corridors.

B. Increase travel time reliability and predictability for travel on highway and transit systems.

C. Ensure access to freight terminals such as river ports, airports, and intermodal rail yards.

D. Increase transit ridership and the share of trips taken using transit, bicycling and walking.

E. Improve multimodal travel options for people of all ages and abilities to connect to jobs and other opportunities, particularly for historically under-represented populations.

Strategies:

C1. Regional transportation partners will continue to work together to plan and implement transportation systems that are multimodal and provide connections between modes. The Council will prioritize regional projects that are multimodal and cost-effective and encourage investments to include appropriate provisions for bicycle and pedestrian travel.

Planning and design of highway and street corridors must continue to incorporate and improve the safety and mobility needs of all users, including trucks, buses, trains, pedestrians and people riding bicycles. The region and state have been pioneers in highway system management to increase multimodal efficiency. These efforts must be continued and expanded in the future. MnDOT, counties, and cities should provide advantages for transit on highways and streets, including bus-only shoulders, transit stations, bus bump-outs, transit signal priority, and ramp meter bypasses. MnDOT, counties, cities, and transit providers should provide facilities for people to safely walk or bike across highways, streets, and other major barriers in urban, suburban, and rural areas, especially on bridges.



MnDOT, counties, cities, and transit providers should also provide for people of all ages and levels of mobility to safely walk or bike on most highways and streets in the region (see Strategy C2 below). The needs of bicyclists and pedestrians must be addressed when roadway bridges are built or rebuilt.

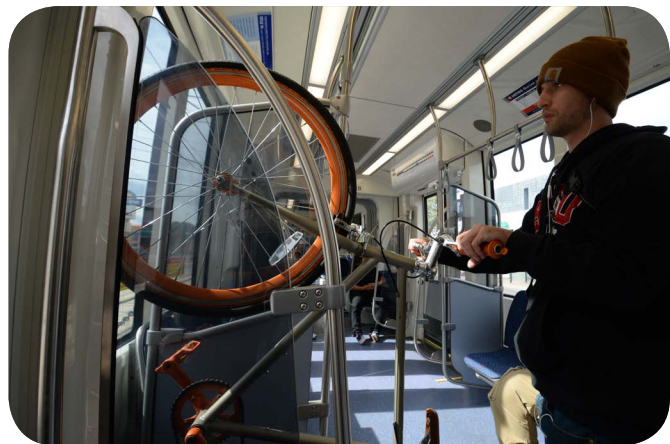
A strong bicycle and pedestrian system is essential to provide valuable connections to the regional transit system and improve mobility for people with disabilities. Since the experience of transit customers generally starts with walking, improvements to the pedestrian environment are essential to transit. This includes providing facilities but also considering the other elements of design and urban form that contribute to a good pedestrian experience.

Supportive local actions:

- In local comprehensive plans, coordinate the local transportation element for streets, pedestrian and bicycle facilities with county, regional, state agencies and adjacent communities.
- Continue to implement universal accessibility in all new construction and rehabilitation of transportation infrastructure to comply with the federal Americans with Disabilities Act.

C2. Local units of government should provide a system of interconnected arterial roads, streets, bicycle facilities, and pedestrian facilities to meet local travel needs using Complete Streets principles.

An interconnected, multimodal local transportation system helps reduce highway congestion, provides access to land uses, and expands travel options. Local and county governments should plan a system of multimodal interconnected collector roads and minor arterials to serve short and medium-length trips.



A local transportation system should serve the full range of types of trips. Minor arterials serve more and longer trips, sometimes at faster speeds, to help reduce demand on metropolitan highway system – also called principal arterials – and ensure that traffic does not spill over to local streets. Local streets provide a basic level of access to land, including homes and businesses. The functional classification system in [Appendix D](#) identifies roads by the function they serve. Cars, bicyclists, pedestrians, transit, and trucks need to be considered in the planning for all of these roads.

“Complete Streets” is a term used to describe an approach to transportation planning, design, and construction that considers the needs of all potential users – motorists, pedestrians, transit vehicles and users, bicyclists, commercial freight trucks, and emergency vehicles – moving along and across roads and through intersections. For pedestrians, bicyclists, and transit users this should include users of all ages and abilities. The goal of complete streets, as described in MnDOT’s *Complete Streets Policy and Procedures Technical Memorandum*, is to:

- Develop a balanced transportation system that integrates all modes via planning that includes each transportation mode (that is, transit, freight, auto, bicycle, and pedestrian) and
- Include transportation users of all types, ages, and abilities.

Complete Streets does not mean “all modes on all roads.” Instead, implementing Complete Streets principles ensures that the accessibility and safety of all travelers be appropriately considered and incorporated throughout any road project’s planning, design, and construction.

MnDOT, counties, and cities should continue to work together to provide facilities for people to bike or walk along most streets and highways in urban and in some rural areas, with the exception of freeways. A well-connected collector road network is important to support non-motorized modes parallel to major highways and within neighborhoods and activity centers. Local streets, especially where traffic calming measures have been implemented and traffic signals are provided at major intersections, can provide better bicycle and pedestrian comfort, air quality, and safety than highways with higher traffic volumes and speeds.

Minor arterials in some suburban and rural areas often have sufficient right-of-way to add separated off-road bicycle facilities, but in the urban core, narrower rights-of-way are more common. On-road bicycle facilities are appropriate along minor arterials where the bicycle facility can be designed to support safe travel for all users and the addition of the facility maintains the road’s overall function and capacity for other modes. More specific discussion of how bicycle facilities might be provided on arterials and local roadways is provided in the [Bicycle and Pedestrian Investment Direction](#).

Major transit investments like transitways and transit centers also need to be highly accessible for pedestrians and bicyclists. It is important that transit facilities are designed to integrate with existing local transportation systems and land use and to be supportive of plans for higher density development.

Supportive local actions:

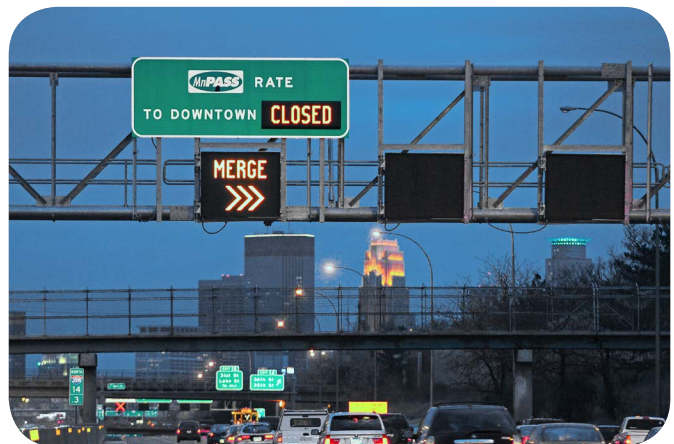
- In local comprehensive plans, develop and adopt local transportation plan elements for streets and pedestrian and bicycle facilities that serve the community, provide direct connections to job concentrations, create an integrated system with adjacent communities, and implement and connect to the Regional Bicycle Transportation Network.
- Adopt a Complete Streets policy and identify roads that should be emphasized for different uses (for example, transit, bicyclists, pedestrians and freight). All roads should be designed to accommodate emergency vehicles.

C3. The Council, working with MnDOT through their Enhancing Financial Effectiveness (EFE) efforts, and other relevant jurisdictions, will continue to maintain a Congestion Management Process for the region’s principal arterials to meet federal requirements. The Congestion Management Process will incorporate and coordinate the various activities of MnDOT, transit providers, counties, cities and transportation management organizations to increase the multimodal efficiency and people-moving capacity of the National Highway System.

The region has a well-developed and managed freeway system. In previous long-range transportation plans, the emphasis was to meet forecast demand by adding highway capacity. However, no region in the country has successfully “solved” highway congestion. Current trends also suggest that the transportation system is experiencing new resource, policy, technology, and local and global economic conditions that differ from those of the past.

In response, this Transportation Policy Plan recognizes that system-wide highway congestion will not be eliminated or significantly reduced. This plan, including the Congestion Management Process, emphasizes that the impacts of congestion should and can be eased by increasing the people-moving capacity of the multimodal transportation system, while minimizing future demand on the highway system. Mitigating the impacts of congestion will be achieved by implementing supportive land use policy; improving traffic management and more efficient use of existing highway system capacity, pavement, and right-of-way; implementing a MnPASS system and limited strategic highway capacity enhancements; and implementing alternatives to driving alone. Through the Congestion Management Process, the Council, MnDOT and other relevant jurisdictions will work to monitor and evaluate congestion mitigation strategies and projects being implemented and modify the approach in the future as needed.

This plan emphasizes that limited resources must be focused on providing the most system-wide transportation benefit. Where strategic enhancements to highway capacity are considered, MnDOT and local governments will design highway projects with the intent to manage congestion. Highway system performance will be measured by people-carrying capacity and travel time reliability instead of more traditional measures such as level of service. Chapter 12 of the Transportation Policy Plan includes a description of the [Congestion Management Process](#).



C4. Regional transportation partners will promote multimodal travel options and alternatives to single occupant vehicle travel and highway congestion through a variety of travel demand management initiatives, with a focus on major job, activity, and industrial and manufacturing concentrations on congested highway corridors and corridors served by regional transit service.

Travel demand management (TDM) strategies emphasize reducing vehicle miles traveled and trips made driving alone. These strategies should be directed at increasing the use of travel options, easing congestion, reducing pollution, and encouraging transportation-efficient land development.

TDM strategies are most successful in areas with high travel demand and potential for using travel options. Thus, the Council and its TDM partners will focus local and regional TDM efforts on employment centers and corridors with significant investments in travel options. Travel options include transit service, transit and ridesharing advantages like MnPASS lanes, high-occupancy vehicle lanes that bypass freeway ramp meters, bus-only shoulders, and biking and walking facilities for users of all ages and levels of mobility.



The Council will provide TDM technical assistance and financial incentives to transportation management organizations (TMOs), especially those located in areas with high levels of congestion. The Council and its TDM partners will also provide assistance to local units of government to implement TDM strategies and to employers and property owners. Other TDM strategies include the development of TDM plans for specific sites or new developments, telework and flexible work schedule programs, avoiding the oversupply of parking and pricing strategies for parking, and employee training programs.

Supportive local actions:

- Support, collaborate, and implement travel demand management policies, programs, and land use regulations in collaboration with other government agencies, transit providers, travel management organizations, businesses, employees, and property owners.

C5. The Council will work with MnDOT and local governments to implement a system of MnPASS lanes and transit advantages that support fast, reliable alternatives to single-occupancy vehicle travel in congested highway corridors.

MnPASS is an integral part of a multimodal transportation system, and helps people reach job concentrations faster and more efficiently. MnPASS lanes provide a reliable, congestion-free travel option for people who ride bus transit, people who ride in carpools and solo drivers who are willing to pay a fee during peak rush-hour periods. MnPASS can improve efficiency by moving more people through highway corridors during congested periods. It provides commuters and small commercial vehicles with greater travel-time reliability and choice. It encourages greater park-and-ride use and increases car and vanpooling. MnPASS also improves transit service and increases ridership, particularly on express bus service.

The Council and MnDOT will continue to implement transit advantages on the freeway system that allow transit vehicles to bypass congestion and provide a faster, more reliable travel time. The primary system of transit advantages in the region includes bus-only shoulders, ramp-meter bypasses, and MnPASS lanes. MnDOT will continue to analyze the need for new transit advantages and maintain existing transit advantages to the greatest extent possible.

Transit advantages are also used to improve local transit circulation. Examples include exclusive bus lanes, traffic signal timing and signal priority, and queue jumps. The Council and transit providers will work with local governments to determine where these improvements may be needed and identify possible implementation solutions.

In addition to moving people more expeditiously, implementing MnPASS lanes will provide benefits to local and regional freight moved by truck. MnPASS lanes will directly benefit shipments by single-unit commercial vehicles by allowing those vehicles to “buy in” to the lane to receive the benefit of an uncongested trip. The development of a MnPASS lane system may also benefit traditional freight movements by large trucks, because additional MnPASS lanes can reduce congestion in adjacent general purpose lanes.

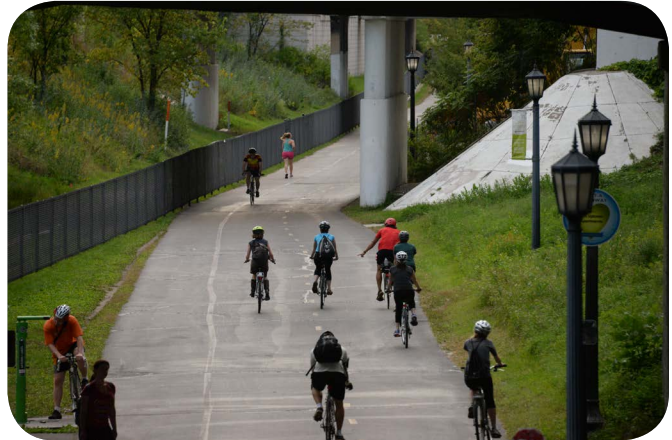
Supportive local actions:

- Identify opportunities for transit advantages on the local road system that improve the attractiveness of the transit system and coordinate their implementation with regional transit providers.



C6. The Council will support an interagency approach to preserving right-of-way for future transportation projects that are consistent with the Transportation Policy Plan.

Rights-of-way for future transportation infrastructure are difficult to obtain. Consequently, right-of-way should be preserved for public use as project locations become certain and property becomes available. The Council's Right-of-way Acquisition Loan Fund (RALF) will be used to preserve needed right-of-way for projects on principal arterials and other state highways consistent with the Transportation Policy Plan.



Railroad right-of-way that is proposed to be abandoned provides an opportunity to use these linear corridors for transit, trails, parks, or other systems that could serve a variety of roles. The appropriate agencies that could be involved in preserving rail rights-of-way may vary depending on the short- and long-term intended role. An interagency approach to determining that role will be valuable in ensuring that all possible uses are considered.

Supportive local actions:

- Identify future transportation right-of-way needs through comprehensive planning and coordinate with other transportation providers.

C7. Regional transportation partners will manage and optimize the performance of the principal arterial system as measured by person throughput.

MnDOT will work to address capacity problems across the region's entire principal arterial system. MnDOT and local units of government with jurisdiction over principal arterials will:

- First, address capacity issues by working to apply management improvements such as access management, improved or expanded traffic management technologies
- Second, seek spot mobility improvements identified through processes such as MnDOT's Congestion Management and Safety Plan
- Third, identify affordable MnPASS or other strategic highway capacity enhancements if the congestion issues have not been adequately addressed



Where possible, capacity should be added in the form of MnPASS lane capacity. MnPASS lanes also serve people who carpool or ride transit, key strategies for increasing person throughput since a bus can move as many as 90 passengers on just one vehicle.

Added capacity can be permanent or actively managed to be open only during certain hours, conditions, or for certain vehicles. All projects for expanding principal arterial capacity will implement the lower-cost/high-return approach to investments by maximizing use of available highway capacity, pavement, and right-of-way.

Traffic management technologies, spot mobility improvements identified through the Congestion Management and Safety Plan, MnPASS, strategic capacity enhancements, and regional highway access improvements to job, activity, industrial, and manufacturing centers are discussed further in the Highway Investment section. Access to principal arterials is discussed in Strategy C11.

C8. Regional transportation partners will prioritize all regional highway capital investments based on a project’s expected contributions to achieving the outcomes, goals, and objectives identified in *Thrive MSP 2040* and the Transportation Policy Plan.

All regional highway projects must address the plan goals of safety and security, transportation system stewardship, and healthy environment. After meeting these requirements, the following factors will be used to prioritize highway capital projects, including MnPASS, strategic highway capacity enhancements and access improvements:

- Improves regional economic vitality
- Improves critical regional highway system connectivity
- Increases regional highway system travel time reliability
- Supports regional population, household, and job forecasts and local comprehensive plans
- Supports regional balance of investments

When addressing highway capacity issues, regional transportation partners should work to first apply traffic management technologies to improve traffic flow without adding physical highway capacity. The next category of investment should be to investigate implementing the lower-cost/high-return approach to investments in spot mobility improvements. If traffic management technologies and spot mobility improvements do not address the highway capacity issue identified, only then should adding larger physical capacity – sometimes called expansion improvements – be explored. Expansion improvements include MnPASS lanes, strategic capacity enhancements, and highway access improvements.

Providing a congestion-free, reliable option for transit users, carpoolers and solo drivers willing to pay a fee to use MnPASS lanes is the region’s priority for expansion improvements. Strategic capacity additions to general purpose lanes should only be considered if adding MnPASS lane capacity has been evaluated and found not to be feasible, the improvement is affordable, and it is approached using the philosophy of lower-cost/high-return on investment.

C9. The Council will support investments in A-minor arterials that build, manage, or improve the system's ability to supplement the capacity of the principal arterial system and support access to the region's job, activity, and industrial and manufacturing concentrations.

MnDOT, counties, and cities within the seven-county region have identified the roads in the minor arterial system, called A-minor arterials, that provide the most support to the principal arterial system and access to regional job, activity, industrial, and manufacturing centers. The Transportation Advisory Board has chosen to focus much of its federal funding on highway improvements on A-minor and non-freeway principal arterials. The Metropolitan Council and partners recognize four types of A-minor arterials to ensure the system is flexible and responsive to different policies and situations throughout the urban and rural parts of the seven-county region. The four types—Augmentors, Expanders, Relievers, and Connectors—are defined in [Appendix D](#).

A-minor arterials should provide reliable travel times at reasonable travel speeds, but are not required to be high speed. They are important parts of the multimodal transportation system serving people in trucks, personal vehicles, buses, walking, and on bicycles. Access to A-minor arterials is discussed in Strategy C11. Within the urban service area, sidewalks or multi-use non-motorized facilities should be provided along A-minor arterials. On-road bicycle facilities are appropriate on A-minor arterials where there are no effective parallel route options and the bicycle or pedestrian facility can be designed to support safe travel for all users. The addition of the bicycle or pedestrian facility should maintain the road's multimodal function, safety and capacity.

Supportive local actions:

- Many A-minor arterials are owned and operated by counties and cities. Local units of government should plan and maintain a system of A-minor arterials that provide for these local, multimodal trips.

C10. Regional transportation partners will manage access to principal and A-minor arterials to preserve and enhance their safety and capacity. The Council will work with MnDOT to review interchange requests for the principal arterial system.

Interchanges and intersections on the principal arterial system provide important access to regional job, activity, industrial, and manufacturing centers. But the safety, capacity, and utility of principal and A-minor arterials are affected in large part by how street and driveway access to these roadways is provided and managed. Adding new interchanges to existing freeways generally makes freeway performance worse, while improving intersections on non-freeways can increase highway capacity.

Decisions about access on the principal arterial system need to be thoroughly analyzed and carefully considered in coordination with MnDOT and the Council. Access spacing and the MnDOT-Council interchange review process are discussed in [Appendix D](#) and [Appendix E](#). Appendices D and E emphasize the importance of improvements on non-freeway highways in providing benefits for regional travel. As local units of government work with MnDOT and the

Council to improve and convert intersections on non-freeway trunk highways, the following requirements are particularly important to achieve regional objectives:

- The appropriate local units of government exercising land use authority along trunk highways will be expected to incorporate access standards into their subdivision and zoning ordinances and apply the standards during their development review process
- Conversion of an at-grade intersection to an interchange should occur in sequence as part of an incremental freeway conversion. Isolated interchanges on non-freeway principal arterials are discouraged. Conversion of an at-grade intersection to an interchange must provide safety and mobility improvements to both the mainline and cross-street. The new interchange should be adjacent to an existing interchange unless MnDOT and the Council determine that the intermediate access points can be modified or managed to address safety and mobility concerns
- Principal arterials should have interchanges only with other principal or A-minor arterials. Minor arterials should have interchanges and intersections with principal arterials, other minor arterials, or major collectors. Only concentrations of commercial, industrial, or residential land uses should have direct access to minor arterials.
- Interchange spacing should be one mile or more.
- MnDOT and the counties control access on freeways and some expressways through the outright purchase of the access rights from abutting land owners. However, access to other principal and A-minor arterials is most effectively managed through local land use planning and development regulation. If considered early in the process of land development or redevelopment, the appropriate location and design of access and the supporting road network can be worked into the plans. If access is not considered until late in the design of development, it may be difficult to accommodate properly without added expense and potential disruption to the community.

Supportive local actions:

- Cities, counties and townships exercising land use authority along principal arterials and A-minor arterials will be expected to incorporate access standards in their subdivision and zoning ordinances and apply them during their development review process.
- Local access standards should be consistent with MnDOT's Access Management Manual or the appropriate county's access guidelines. Cities and townships should also consult with MnDOT or the county whenever reviewing development plans adjacent to principal arterials and A-minor arterials. For those arterials where the existing access does not conform to the standards, cities should work with MnDOT and/or the county to develop a long-term corridor plan to adjust and improve the access arrangements as opportunities arise through development or redevelopment of an adjacent property. MnDOT has developed a model access management ordinance to serve as a guide for local partners in updating their land use regulations to fully address access considerations.

C11. The Council and regional transit providers will expand and modernize transit service, facilities, systems, and technology, to meet growing demand, improve the customer experience, improve access to destinations, and maximize the efficiency of investments.

The transit system will need to continue to grow and improve to remain a competitive travel option for the region. A significant part of that growth will be expanding and improving the bus system that serves the majority of transit demand in the region. This includes both expanding geographic coverage and “thickening” the transit system by adding new routes and service frequency in areas already served by transit, including connections to transitways. There are several needs that will be addressed by expanding the bus system:

Meet growing demand. The region will add 824,000 people and 549,000 jobs by 2040, with a large portion of these in already developed communities. The region will need to invest in a bus system that serves this growing demand and supports more regional growth along transit routes.

- **Improve access to destinations.** Existing unmet needs and changing lifestyle preferences will lead to demand for better transit access to more destinations. The region will need to provide better access by improving existing service – speed, frequency, span, and connections – and expanding service to new areas. Two areas of high importance will be improving access to job concentrations and improving access to opportunities for people who rely on transit, including under-represented and low-income households. The design of the transit system will be guided by Regional Transit Design Guidelines in [Appendix G](#).
- **Improve the customer experience.** Many transit users choose to ride because of the quality of the experience. Those who rely on transit deserve a great customer experience as well. The region will need to invest in improvements to the transit experience that address factors such as transfers, customer information, comfort, technology, safety and perceived safety and security, and amenities.
- **Maximize the efficiency of investments.** Providing regional transit service is not cheap but investments and policies can often make transit more efficient and cost-effective. The region will need to seize these opportunities to maximize the return on investments in the bus system.

Regional transit providers will address these needs by applying a variety of types and designs of transit services and facilities. This work will be guided by a number of processes and plans designed to link transit improvements to specific needs and opportunities in the community. Some improvements may also address needs on the transitway system after the initial construction of lines, including adding stations or amenities at stations. The details of these plans and processes are described in the [Transit Investment Plan](#).

Supportive local actions:

- Work with regional transit providers to identify potential improvements to the transit system that will suit community needs.
- Focus forecasted growth at transit-supportive densities in job concentrations or nodes along corridors, supported by additional land use strategies discussed in [Land Use and Local Planning](#).

C12. Regional transportation partners will invest in an expanded network of transitways that includes but is not limited to bus rapid transit, light rail, and commuter rail. Transitway investments will be prioritized based on factors that measure a project’s expected contributions to achieving the outcomes, goals, and objectives identified in Thrive MSP 2040 and the Transportation Policy Plan.

Transitways will play an important role in serving the growing region and supporting the economic competitiveness of the region. The region will build an expanded system of transitways that includes bus rapid transit, light rail, and commuter rail. The region also needs to address policies related to modern streetcars, an emerging mode in corridor planning around the region.

Transitways represent a substantial investment for the region and will require extensive planning and coordination to determine the appropriate mix of transitway modes and corridors. There are a number of considerations when exploring transit options in a corridor and when determining the priorities for a long-range transitway system.

The Transit Investment Plan includes technical investment factors intended to measure the expected contributions of a project against the outcomes, goals, and objectives identified in *Thrive MSP 2040* and the Transportation Policy Plan. The list of factors includes ridership, access to jobs and activity, cost-effectiveness, existing land use, future land use and economic development, equity, and environment. Overall system planning will also need to consider policy investments factors such as regional balance, funding viability, community support, and technical readiness and risk when determining priorities in the plan.

Supportive local actions:

- Lead local corridor studies for potential transitway investments in coordination with regional transit providers and other agencies.
- Proactively plan land use around potential transitways that is consistent with the requirements described in [Land Use and Local Planning](#) and supported by additional land use strategies.

C13. The Council will provide paratransit service complementary to the region’s regular route transit system for individuals who are certified by the Council under the Americans with Disabilities Act (ADA).

The Council and regional transit providers will provide an option for those who are not able to use the regular-route transit system due to a disability. Complementary ADA service will be provided consistent with the requirements established in state and federal law. The Council will maintain the eligibility program for this service.

C14. The Council and regional transit providers will provide coordinated transit options, including general public dial-a-ride and vanpool subsidies, in areas of the region not served by regular-route transit. Service levels for these options will be based on available resources and needs.

The Council and regional transit providers will provide dial-a-ride service in areas of the region where transit demand is not strong enough to support regular-route service. These services will

be coordinated with the rest of the transit system to facilitate greater access from these parts of the region and to avoid duplication of services.

For trips where transit is not a viable option for travelers, the Council will make subsidies available for the formation of vanpools with volunteer drivers.

C15. Regional transportation partners should focus investments on completing Priority Regional Bicycle Transportation Corridors and on improving the larger Regional Bicycle Transportation Network.

A regional bicycle transportation network with priority bicycle corridors was developed through the Regional Bicycle System Study completed in 2014. This network establishes the region's priorities for planning and investment in bicycle facilities and is described in detail in the [Bicycle and Pedestrian Investment Direction](#) section.

Supportive local actions:

- Adopt local transportation bikeway elements that encourage community connectivity and connections to existing or planned regional bikeways.

C16. Regional transportation partners should fund projects that provide for bicycle and pedestrian travel across or around physical barriers and/or improve continuity between jurisdictions.

The natural and built environment in general and the region's transportation infrastructure in particular can create unintended physical barriers to a more prominent walking and biking culture. Freeways can be major barriers to safe and comfortable walking and cycling for transportation. The region's freight rail lines also often create formidable barriers to continuous travel, similar to rivers and streams. Bicycle and pedestrian-accessible bridges are an important element for the region to provide a friendly and safe environment for non-motorized transportation.

A definition for regional-critical bicycle links is provided under the [Bicycle and Pedestrian Investment Direction](#) section that would give regional priority to planning and funding bike and pedestrian projects that eliminate regional barriers or improve connections between jurisdictions.

Local bike networks can also be interrupted by high-traffic arterials that are difficult to cross or ride along. Overcoming many of these arterial barriers to walking and biking in the region requires interjurisdictional coordination, since many of these arterials form the boundaries between jurisdictions. The Council supports interjurisdictional coordination to improve planning for better connections across boundaries.

Supportive local actions:

- Identify gaps or barriers in bicycle and pedestrian systems in the comprehensive planning process.

C17. Regional transportation partners will provide or encourage reliable, cost-effective, and accessible transportation choices that provide and enhance access to employment, housing, education, and social connections for pedestrians and people with disabilities.

Local agencies should use best practices in designing pedestrian facilities. Such facilities must be accessible to people of all levels of functional ability so they meet the requirements of the Americans with Disabilities Act.

Supportive local actions:

- In comprehensive plans, adopt local transportation pedestrian and bikeway elements with accessibility guidelines and planned facilities for pedestrians and wheelchair accessibility in areas with high levels of bicycle and pedestrian activity.

C18. The Council, MnDOT, regional railroad authorities, and railroad companies will pursue short- and long-term improvements to accommodate future freight and passenger rail demand.

Where rail congestion has been identified and/or future capacity constraints are anticipated on the metropolitan rail system, regional partners should conduct additional rail corridor studies to facilitate the planning and implementation of needed system improvements that will accommodate future freight and passenger rail demand.

C19. The Council and MnDOT should work together with cities and counties to provide efficient connections from major freight terminals and facilities to the regional highway system, including the federally designated Primary Freight Network.

The Metropolitan Airports Commission should pursue provisions for air cargo infrastructure and air service for the region with direct air freight connections to import/export markets that provide trade opportunities for the region's economy.

City and county roadways provide the "last mile" connections between intermodal freight terminals and the metropolitan highway system, including the National Highway System (NHS) and its subset Primary Freight Network. Coordination with local planning efforts to preserve the condition and capacity of these connector roadways will be essential to maintaining the efficient flow of freight in the region.

Supportive local actions:

- Identify and classify freight corridors in the comprehensive planning process.

C20. The Council and airport sponsors will maintain a system of reliever airports to augment the Minneapolis-Saint Paul International Airport that are accessible within reasonable travel times from all parts of the metropolitan area.

State-of-the-art facilities should be made available by airport sponsors at the region's airports, commensurate with their system role, to induce additional aviation services to use the reliever system.

D. Competitive Economy

Goal:

The regional transportation system supports the economic competitiveness, vitality, and prosperity of the region and state.

Objectives:

- A. Improve multimodal access to regional job concentrations identified in Thrive MSP 2040.
- B. Invest in a multimodal transportation system to attract and retain businesses and residents.
- C. Support the region's economic competitiveness through the efficient movement of freight.

Strategies

D1. The Council and its transportation partners will identify and pursue the level of increased funding needed to create a multimodal transportation system that is safe, well maintained, offers modal choices, manages and eases congestion, provides reliable access to jobs and opportunities, facilitates the shipping of freight, connects and enhances communities, and shares benefits and impacts equitably among all communities and users.

The Current Revenue Scenario in this plan generally allows for investments to operate, maintain, and preserve the existing highway and transit systems, supported by some funding for MnPASS lanes, other strategic highway capacity enhancements, and transitway expansion. However, the Current Revenue Scenario does not allow the region to fully address highway operations, maintenance, and rebuilding needs, make the level of expansion and improvement investments needed to accommodate the expected growth in population and jobs, keep our region competitive, and provide improved choices and experiences for all users of the system.

The Increased Revenue Scenario for highways and transit provides a vision for the additional investments that could be made if a higher level of funding is achieved and that would move the region closer towards accomplishing the goals and objectives identified in this plan.

The Council will continue to work with regional partners to identify additional funding for the region's transportation system needs that would bridge the gap between the Current Revenue Scenario and the additional resources the region might reasonably expect under the Increased Revenue Scenario. If additional resources do become available, that funding would be prioritized and allocated based on the policies in this plan.



Supportive local actions:

- Identify funding needs on the local transportation system and local priorities for funding on the regional transportation system.

D2. The Council will coordinate with other agencies planning and pursuing transportation investments that strengthen connections to other regions in Minnesota and the Upper Midwest, the nation, and world including intercity bus and passenger rail, highway corridors, air service, and freight infrastructure.

Other agencies and private companies are largely responsible for planning and implementing the transportation investments that connect the region to the rest of Minnesota, the Upper Midwest, the nation, and the world. For example, MnDOT and counties are responsible for the major highway corridors that connect the Twin Cities to other regions within the state and to other states, and support cars, trucks, and private intercity bus providers such as Greyhound and Jefferson Lines. Amtrak provides intercity passenger rail, and MnDOT is responsible for planning additional intercity passenger rail services. The Metropolitan Airports Commission works with the airlines provide the region’s air service connections. MnDOT works with the private freight railroads that are responsible for freight rail service and infrastructure, and also with barge companies, port authorities and the Army Corps of Engineers, which provide infrastructure and serve freight service along the Mississippi. The Council will work closely with these partners to ensure that their planned improvements are coordinated with regional investments and that regional needs are considered in the prioritization of these investments.

D3. The Council and its partners will invest in regional transit and bicycle systems that improve connections to jobs and opportunity, promote economic development, and attract and retain businesses and workers in the region on the established transit corridors.

The transit system plays a vital role in getting people to and from jobs and education opportunities and centers of activity. An expanded and improved transit system will continue to strengthen the attractiveness of regional centers of business and activity. Transit will also promote economic development and enhance the region’s livability and prosperity, keeping the region competitive nationally and globally and helping to attract and retain businesses and workers. Investments in transit will be prioritized with access to jobs and activity and supporting economic development as important factors.



Priority Regional Bicycle Transportation Corridors were developed with an emphasis on connecting to regional job concentrations and to the regional transit system, where there is a high demand for bicycle travel and where opportunities for enhancing economic development and business retention are most prevalent. These corridors are introduced in the [Bicycle and Pedestrian Investment Direction](#) section.

Supportive local actions:

- Give priority to projects that integrate pedestrian facilities into regional job concentrations and connect local bikeways with the Regional Bicycle Transportation Network.

D4. The Council, MnDOT, and local governments will invest in a transportation system that provides travel conditions that compete well with peer metropolitan areas.

The Twin Cities region competes with metropolitan areas throughout the nation and the world. The transportation systems in all regions are a critical factor in determining how well they function economically, socially, and environmentally. These systems include airports, water ports, railroads, highways – principal and minor arterials – local streets, sidewalks, and trails. The Council will continue to measure the performance of its transportation system in terms of access and mobility, and its impacts compared to select peer regions nationally and internationally. The Council will also work with MnDOT and the Counties Transit Improvement Board (CTIB) to seek the latest techniques to improve transportation service in the most cost-effective and context-sensitive ways for all modes, including highways.



Supportive local actions:

- Identify local actions to improve overall capacity of critical corridors.

D5. The Council and MnDOT will work with transportation partners to identify the impacts of highway congestion on freight and identify cost-effective mitigation.

The Council and MnDOT will work to identify specific truck mobility issues and needs, and to develop operationally focused solutions for improving travel time reliability for trucks using the regional highway system.

Traffic management technologies such as ramp metering, variable speed control, and traveler information systems can help ease congestion on the highway system. The Council will work with MnDOT, counties, and cities to explore implementing additional strategies in corridors with high truck volumes to further reduce the impact of highway congestion on freight mobility, such as redirecting trucks in real time to avoid congestion caused by crashes.

Supportive local actions:

- Plan for and provide “first and last mile” highway connections to regional job concentrations and manufacturing and distribution areas.

D6. The Council, Metropolitan Airports Commission, MnDOT, and other agencies will work together to maintain a strong regional airport system, including maintaining the Minneapolis-Saint Paul International Airport as a major national and international passenger hub and reliever airports that serve business travel.

Availability of good air transportation connections is critical to maintaining a competitive state and regional economy. Public and private sector efforts in the region should focus on continued development of Minneapolis-Saint Paul International Airport as a major international hub. Maintaining a system of minor reliever airports to provide adequate alternative facilities for general aviation traffic is essential to the effective operations of Minneapolis-Saint Paul International Airport.

Supportive local actions:

- Participate in land use safety studies around airports.

D7. The Metropolitan Airports Commission should periodically update its airport economic impact studies and commercial air-service competition plan to determine facility and service improvements needed at the region’s airports to foster a competitive regional economy.

Decisions by aviation partners on providing facilities and services to improve regional economic capabilities should be based on periodic updating and refinement of airport economic impact studies and surveys, a commercial air-service competition plan, and annual airport marketing programs.

Although the actual provision of air service is a business decision made by privately owned airlines, the Metropolitan Airports Commission should continue its efforts to attract more air service carriers to the region to provide competition and affordable fares for residents and businesses. Since adoption of the last Transportation Policy Plan in 2010, the Metropolitan Airports Commission has pursued several airlines to add service at Minneapolis-Saint Paul International Airport, and two new airlines (Spirit Airlines and Condor Airlines) have recently started service.

E. Healthy Environment

Goal:

The regional transportation system advances equity and contributes to communities' livability and sustainability while protecting the natural, cultural, and developed environments.

Objectives:

- A. Reduce transportation-related air emissions.
- B. Reduce impacts of transportation construction, operations, and use on the natural, cultural, and developed environments.
- C. Increase the availability and attractiveness of transit, bicycling, and walking to encourage healthy communities and active car-free lifestyles.
- D. Provide a transportation system that promotes community cohesion and connectivity for people of all ages and abilities, particularly for historically under represented populations.

Strategies

E1. Regional transportation partners recognize the role of transportation choices in reducing emissions and will support state and regional goals for reducing greenhouse gas and air pollutant emissions. The Council will provide information and technical assistance to local governments in measuring and reducing transportation-related emissions.

State and regional goals are to reduce greenhouse gas emissions by 15% below 2005 levels by 2015, 30% by 2025 and 80% by 2050. Currently Minnesota is not on track to meet 2015 goals. Since one-quarter of statewide greenhouse gas emissions come from the transportation sector, reductions in transportation emissions will have to be part of the solution.

The Council will support efforts to reduce emissions through reductions in auto tripmaking and public education about the effects of transportation choices. An example of this education is Metro Transit's "Go Greener" campaign with its Trip Planner tool, which allows customers to see the greenhouse gas impact of their trip.



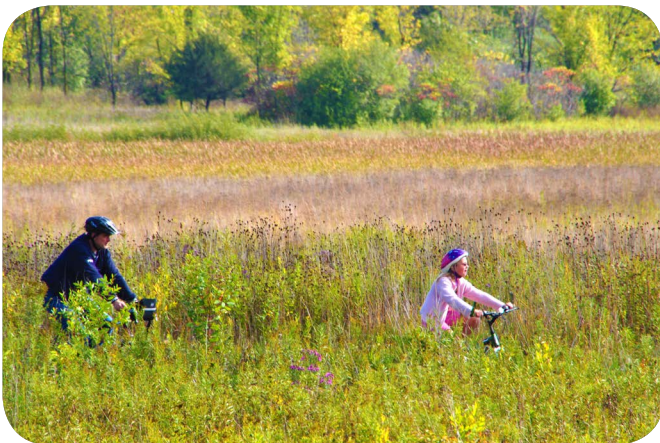
Many of the most effective strategies for reducing greenhouse gas emissions are accomplished through local land use decisions that reduce the number of auto trips, or by federal and auto industry action to control fuel efficiency of the vehicle fleet. The Council will use its technical expertise to identify and encourage adoption of the most effective measures to reduce air emissions. The Council will also develop a regional greenhouse gas emissions inventory.

Transportation also contributes significantly to elevated levels of regulated air pollutants such as carbon monoxide, nitrogen dioxide, ozone, and fine particulate matter and to other hazardous air toxics, all of which have negative effects on human health and quality of life throughout the region. The Council and MnDOT, in cooperation with MPCA, will continue efforts to improve air quality, reduce emissions from mobile sources, and maintain compliance with federal air quality standards.

The MAC should periodically evaluate the air quality impacts of aviation operations and report to the Council on air quality problems or issues through the MAC annual environmental review of the capital improvement program.

E2. The Council and MnDOT will consider reductions in transportation-related emissions of air pollutants and greenhouse gases when prioritizing transportation investments.

Reducing transportation-related emissions have been a consideration in selecting projects for many Council and MnDOT programs for years. The regional solicitation uses emissions reduction as one of its criteria for prioritizing projects. Emissions reduction has also become a prioritizing criteria for other transportation programs, including travel demand management, transitway expansion, highway expansion and system management. Opportunities to use federal funds for efficient emissions-reduction programs, such as diesel retrofits, should continue to be implemented. Consideration should be given to all types of transportation emissions and generators, including bus and truck fleets, construction vehicles, and electricity generation for light rail transit operations and electric cars. The region should not fund projects that will have a substantial negative effect on local or regional air quality.



E3. Regional transportation partners will plan and implement a transportation system that considers the needs of all potential users, including children, senior citizens, and persons with disabilities, and that promotes active lifestyles and cohesive communities. A special emphasis should be placed on promoting the environmental and health benefits of alternatives to single-occupancy vehicle travel.

The transportation system needs to meet the needs of all potential users, from the youngest to the oldest. This includes people with a broad range of abilities and backgrounds.

In recent years, elements of community design have gained attention for the way that they can encourage or discourage physical activity. Public health policy discussions have identified opportunities for bicycling and walking as one element in the fight against obesity and other health problems related to a lack of physical activity. As a result, several counties in the Twin Cities metropolitan area have incorporated active living principles into their community and health planning programs. These efforts communicate to the traveling public the individual and collective benefits to personal health and the environment of walking and biking in performing daily errands.



As regional transportation partners preserve and modernize the transportation system, they should design facilities, including signs, to accommodate older travelers with changing vision and slower reaction times. All transit vehicles in the region have been accessible for many years and transit providers should adapt as technologies in this area continue to improve. Metro Mobility provides service that complies with ADA requirements to complement regular-route transit. Public transit providers can also work with schools to identify opportunities to coordinate services, such as the Student Pass fare card. On roadways, partners should also continue to implement their ADA transition plans, especially at highway interchanges, intersections, and near transit access locations.

E4. Regional transportation partners will protect, enhance and mitigate impacts on natural resources when planning, constructing, and operating transportation systems. This will include management of air and water quality and identification of priority natural resources through the Natural Resources Inventory developed by the Council and Minnesota Department of Natural Resources.

Thrive MSP 2040 emphasizes the protection and enhancement of environmental quality through its outcomes of stewardship, livability, and sustainability. The Council supports work toward this end through the Natural Resource Inventory, which provides comprehensive information about environmental resources throughout the seven-county metropolitan area.

Planning and development should follow all requirements under the National Environmental Policy Act and Minnesota Environmental Policy Act for the disclosure of environmental impacts. During all phases of transportation project development, construction, and operation, regional partners and local governments should seek opportunities to not only avoid harming, but also enhance the natural environment, including air quality, water quality, natural area preservation, and wildlife preservation.

Airport long-term comprehensive plans shall include a management strategy to protect groundwater quality that includes proposed policies, criteria and procedures for preventing, detecting and responding to a spill or release of contaminants on the site. The plans should identify the location, design and age of individual/group/central sewer systems on site and all well location sites, and evaluate system deficiencies and pollution problems. Airport long-term comprehensive plans shall also include detailed proposals for providing sanitary sewer services. Reliever airports should be connected to the sewer system when service is available near the airport. When connection is not practical, the airport owner and local governmental agencies must adopt and implement ordinances, including administrative and enforcement procedures that will adequately meet the need for trouble-free, on-site sewage disposal in accordance with the Council’s guidelines in its Water Resources Management Policy Plan.

Airport long-term comprehensive plans should also include a plan for surface-water management that contains provisions to protect surface and groundwater. In addition to including information that must be consistent with plans of watershed management organizations and the state wetland regulations, the water management plan should include provisions to mitigate impacts from construction, restore or retain natural functions of remaining wetlands and water bodies, and include the pretreatment of runoff prior to being discharged to surface waters.

E5. Transportation partners will protect, enhance and mitigate impacts on the cultural and built environments when planning, constructing, and operating transportation systems.

Thrive MSP 2040 emphasizes the protection and enhancement of the cultural and built environment and quality of life (including air quality and its impacts on a community’s residents) through its outcomes of stewardship, livability, and sustainability. Transportation partners should plan and implement proposed highway and street design and transit routes and facilities with sensitivity to a community’s vision and quality of life, including using context-sensitive design methods.

Context-sensitive design acknowledges local attributes by balancing economic, social, aesthetic and environmental objectives in addition to mobility objectives. Highway projects can often provide opportunities to incorporate many community objectives for livability and enhanced environmental quality. In addition, local A-minor roads should be planned and implemented in a manner compatible with a road’s functional classification and surrounding land uses. Functional classification is discussed in [Appendix D](#).

In addition, during construction and implementation of projects, transportation partners need to be aware of and plan for the access needs of the local businesses and residents.

Supportive local actions:

- Allow the market to determine necessary parking ratios (remove requirements) and support shared parking.
- Support employer travel-demand management plans and programs.
- Support the development of local ride-sharing and bike-sharing programs.
- Accommodate higher-density development near transit stations.
- Develop plans to improve conditions for walking and bicycling.
- Adopt development requirements and Complete Streets policies that improve circulation and access for bicyclists and pedestrians.
- Adopt development standards that increase vegetative cover and increase the reflective quality (or albedo) of surfaces.

E6. Regional transportation partners will use a variety of communication methods and eliminate barriers to foster public engagement in transportation planning that will include special efforts to engage members of historically underrepresented communities, including communities of color, low-income communities, and those with disabilities to ensure that their concerns and issues are considered in regional and local transportation decision-making.

Transportation projects can affect people's daily lives in very tangible and immediate ways. Historically, some transportation projects, have disproportionately affected underrepresented communities, often with little or no input, participation or consent from these communities.

Regional transportation partners will seek public participation using a variety of communication methods to formulate transportation policy, develop transportation plans and make transportation investment decisions. Useful communication methods include websites and social media, print media, radio, direct mailing, and public meetings and hearings. These methods should include opportunities for broad participation, comment, review, and debate of proposed plans and actions.

Regional transportation partners should also recruit representatives of groups traditionally underrepresented in regional policymaking and provide enhanced participation opportunities to encourage members of those groups to share their unique perspectives, comments and suggestions. Enhanced participation could include such steps as foreign language and sign language interpreters, focus groups, and meetings in places familiar to the groups, such as their community centers and places of worship.

E7. Regional transportation partners will avoid, minimize and mitigate disproportionately high and adverse impacts of transportation projects to the region’s historically underrepresented communities, including communities of color, low-income communities, and those with disabilities.

Several federal laws and regulations, including Title VI of the Civil Rights Act and the Executive Order on Environmental Justice, require federally funded transportation investments to avoid disproportionately high and adverse impacts of transportation projects to the region’s minority and low-income populations. The region will not only follow those requirements to avoid adverse impacts, but go beyond them to ensure future transportation investments provide positive benefits for the region’s historically underrepresented communities, including communities of color and low-income communities, and those with disabilities.

F. Leveraging Transportation Investments to Guide Land Use

Goal:

The region leverages transportation investments to guide land use and development patterns that advance the regional vision of stewardship, prosperity, livability, equity, and sustainability.

Objectives:

- A. Focus regional growth in areas that support the full range of multimodal travel.
- B. Maintain adequate highway, riverfront, and rail-accessible land to meet existing and future demand for freight movement.
- C. Encourage local land use design that integrates highways, streets, transit, walking, and bicycling.
- D. Encourage communities, businesses and aviation interests to collaborate on limiting incompatible land uses that would limit the use of the region's airports.

Strategies

All strategies in this section should be viewed as supportive local actions and local governments will be the primary implementors of these actions. However, regional transportation partners, including the Council, will support the efforts of local governments through a number of the strategies.

- F1. Local governments within the seven-county metropolitan area must prepare comprehensive plans that conform to the Transportation Policy Plan and should recognize the land use and transportation opportunities and challenges that correspond to *Thrive MSP 2040* planning areas.**

Local governments within the Metropolitan Urban Service Area should plan for their projected growth and stage their transportation infrastructure to accommodate the needs of that growth.

Local governments in the Rural Service Area should plan for transportation systems and land use patterns that are compatible with the protection of agricultural uses and the need for future sewered development.



The partnership between regional and local planning and investment is established in the Metropolitan Land Planning Act to guide growth and change in the seven-county region of Anoka, Carver, Dakota, Hennepin, Ramsey, Scott, and Washington. Long-range forecasts for population, households and employment are used by the Council, MnDOT, and local governments to plan for orderly and economical growth and the land use and system changes – transportation, wastewater treatment, housing, and parks – needed to support that growth.

Local governments have the responsibility to guide and regulate land use and provide local infrastructure. What form this takes will depend on the type of development that can be supported by regional infrastructure and other considerations described in *Thrive MSP 2040*'s Geographic Planning Areas, Land Use Policy, and policy plans, including the special features. Local governments should refer to these coordinated documents along with the Transportation Policy Plan when preparing their comprehensive plans.

The opportunities and challenges associated with growth vary across the region. The community designations in *Thrive MSP 2040* establish some common strategy considerations for communities of a similar type. The specific considerations related to the Transportation Policy Plan that should be included in local comprehensive plans are summarized by community designation in the [Land Use and Local Planning](#).

F2. Local governments should plan for increased density and a diversification of uses in job concentrations, nodes along corridors, and local centers to maximize the effectiveness of the transportation system.

Job concentrations are critically important to the regional economy. Although most of these are located along regional highways, roadways alone cannot continue to provide the access needed as highway congestion continues to increase. Employment densities are an important factor influencing how people travel and how the transportation system supports their travel.

The region's transportation system and economy will be more effective if jobs are concentrated and density is focused in nodes along corridors. Planning for density in nodes also needs to provide for a high-quality, walkable local street network, a mix of land uses, and amenities to support denser development. These coordinated efforts will support more effective transportation by reducing short auto trips or replacing them with walking and biking, increasing transit potential, and allowing for more flexible parking.

Local governments can support the regional economy and the transportation system by guiding more density and a mix of uses to job concentrations, nodes along transportation corridors, and local centers. While market conditions play a primary role in economic development, local governments set the necessary groundwork through land use regulations, the design of local transportation networks, and community development incentives.

F3. Metropolitan Council, MnDOT, and local governments will plan, build, operate, maintain, and rebuild an adequate system of interconnected highways and local roads.

Local and county governments will plan and implement a system of multimodal interconnected highways and local roads to serve the full range of trips. This system of major highways and local streets supports connections to and from our homes, schools, jobs, other states, and the world. Some roads are intended to emphasize mobility for long-distance trips, while others are intended to primarily provide access to land.

The design and spacing of this system is a critical factor in successfully supporting a variety of land use densities. More dense land uses require a denser road network, or traffic can be forced to use inappropriate alternatives. For example, an inadequate system could force through traffic to use a local street to access a job concentration, increasing safety concerns, or could force local traffic to use the limited capacity of a principal arterial for a very short trip. [Appendix D](#) discusses roadway functional classification, facility spacing, and access management.

All levels of government need to work together if in the region. Cities and counties have roles in both land use and transportation. Considering the limited funding available for highway investments, cities and counties should continue to enhance highway safety and capacity by working with MnDOT and the Council to plan and control access to highways.

Cities and counties may also be able to protect right-of-way to widen existing highways or to build new ones. In all cases, land use planning and development should continue to be closely coordinated with the existing and future road system. The highway system and local roads are also critically important to manufacturing and distribution areas, as well as other freight generating land uses.

The Council will also work with its partners to ensure the road authority with jurisdiction over and responsibility for a road matches the role the road plays in the transportation system; for example, MnDOT should be responsible for principal arterials.



F4. Local governments will identify opportunities for and adopt guiding land use policies that support future growth around transit stations and near high-frequency transit service. The Council will work with local governments in this effort by providing technical assistance and coordinating the implementation of transit-oriented development. The Council will also prioritize investments in transit expansion in areas where infrastructure and development patterns to support a successful transit system are either in place or committed to in the planning or development process.

Local land use and development patterns greatly impact the need for and use of transit. This plan provides for significant investments in the expansion of transit stations along transitways and potential expansion along existing and future high-frequency transit corridors. The plan acknowledges the growing demand for transit services and transit-oriented development in the region. However, for the region to be good stewards of transit investments, local governments need to be partners in addressing the challenges of planning for and supporting denser development along transit corridors.



Transit service requires medium- to high-density housing to be successful and needs to be combined with a mix of uses along a transit line or route. Transit-oriented development should be focused on nodes along corridors – such as stations – to support the success of transit service and create livable, sustainable communities. The Council will support communities planning for higher densities by providing technical guidance on how to plan for higher density, transit-oriented development.

When making transit investments, the Council will prioritize investments in communities that have infrastructure and development patterns that are supportive of a successful transit system or are committed to them in planning or implementation. More details about what makes a community supportive of transit are available in [Land Use and Local Planning](#).

F5. Local governments should lead planning efforts for land use in transit-oriented station areas, small-areas, or corridors, with the support of the Council and other stakeholders.

Local governments should take the lead in developing plans and implementation strategies that support more effective transit investments in their communities. They are in the best position to understand the needs and desires of neighborhoods and the local business community and to set long-range plans that guide land use changes necessary to support transit investments. Local plans are the means to demonstrate local commitment to land use that is needed to support regional investments in transit infrastructure and service.



F6. Local governments should adopt policies, develop partnerships, identify resources, and consider regulatory tools to support and specifically address the opportunities and challenges related to creating walkable, bikeable, transit-friendly places.

As the Council works with communities to promote centers of development and redevelopment along transit corridors, walking and bicycling will become increasingly important and desirable ways of traveling within and between compact, mixed-use neighborhoods. Systems of safe, continuous, barrier-free bicycle and pedestrian facilities for people of all ages and levels of mobility are essential to the success of transit-oriented developments.



Most of the region has evolved to meet the needs of the private automobile. As preferences are shifting toward more transportation options, communities will have to adapt their regulatory tools to accommodate these preferences. There will be opportunities to change the built environment and improve local transportation networks for pedestrians, bicyclists and transit users. Cities are encouraged to identify and market redevelopment areas that may leverage investment in bicycle and pedestrian improvements. These opportunities may exist in transit station areas, along transit routes, in suburban mixed-use town centers, or in rural centers, but should also include other areas with low rates of auto ownership.

Not all local communities will need to address these concerns in the same way. The important consideration for local governments is ensuring that there are processes in place to address opportunities now and into the future.

F7. Local governments should include bicycle and pedestrian elements in local comprehensive plans.

Pedestrian and bicycle elements of local comprehensive plans should:

- Promote safety of pedestrians and bicyclists for people of all ages and mobility levels
- Provide connections to adjacent cities and counties and their pedestrian and bicycle systems
- Address gaps and remove barriers in the existing local, county or regional systems
- Provide local connections between the Regional Bicycle Transportation Network and major regional destinations, including regional job concentrations, as identified in the [Bicycle-Pedestrian Investment Direction section](#)
- Provide pedestrian and bicycle facilities within regional job concentrations, including commercial, retail, entertainment, and recreation centers

The extent to which local government plans should address bicycle and pedestrian systems depends on the community's needs for these modes. For instance, rural communities with a low density of origins and destinations within biking or walking distance may be able to meet these modal needs adequately on existing streets. Local streets and collectors are important elements of transportation because they generally have low volumes and lower speeds where bicycles and motor vehicles can co-exist safely. However, each community should also consider other options for safe bicycle and pedestrian travel to the extent appropriate for their community.

F8. Local governments should adopt comprehensive plans that include policies emphasizing identifying and improving roads best suited for carrying trucks while minimizing impacts such as noise and traffic to sensitive land uses.

Planning activities for land use and freight need to be closely coordinated, and they require communities to work with the trucking industry and regional, state, and federal transportation agencies. While freight access is vital to the region's economy and the economical viability of industrial and commercial land, truck traffic is often regarded as a nuisance to other land uses, such as residential areas and parks. Much of the region's freight traffic travels in trucks on regional highways and arterials, but local roads provide an important link to freight generators and destinations.

As a part of the comprehensive planning process, local governments should identify and analyze truck routes, review their comprehensive plans to ensure land set aside for industrial uses is adequate and appropriate, and address zoning and code regulations that consider the needs of freight users and surrounding land uses. Roadway designs should recognize contemporary truck length so there is adequate turning radius and sufficient delivery areas, especially when rebuilding roads in the older parts of the region where original road designs assumed shorter trucks, or when introducing innovative traffic intersections such as roundabouts.

F9. Local governments should balance the needs of industrial, residential and recreational users when planning and implementing land uses along the navigable portions of the Mississippi River system to ensure sufficient access for existing and future barge transportation needs.

The Mississippi River system (which includes parts of the Minnesota and Saint Croix rivers) is important for the economical movement of bulk commodities. The region's rivers are also important natural features and recreational areas. These differing uses can lead to conflicts and competing community and/or regional priorities that require balancing and coordinating uses.

The amount of land adjacent to rivers that is suitable for barge terminal uses is limited by a number of variables, such as topography and good highway access for truck-to-barge transfers. Local governments bordering the river should address the potential for freight use along the Mississippi River system in their comprehensive plans and balance that with other potential demands for use.

To aid local governments in planning for an appropriate balance of uses along the Mississippi River system, the Council will analyze existing land uses and zoning to determine the land and transportation needs of river-dependent industries and the extent to which land for industrial/manufacturing uses on the river is threatened by non-industrial development.

F10. Local governments should consider the role of railroads in promoting economic activity and identify an adequate supply of land in their comprehensive plans to meet existing and future demand for industrial uses requiring rail access.

Railroads are also important to the region's economy, providing valuable connections from the Twin Cities to national and global markets. While passenger service is one role of the rail system, movement of commodities is their main function. Commodity shipments by rail have been growing. While intermodal transfer terminals service the efficient transfer of containers between truck and rail, the demand for direct access to rail from adjacent warehouses and industries is also likely to increase.

Railroads often occupy central and important urban locations where redevelopment of adjacent industrial land use is driven by the real estate market for non-industrial or commercial uses. In comprehensive plans, local governments need to balance these potential changes with the economic and transportation benefits afforded by rail service, especially as long-distance freight movement on trucks is facing the higher fuel costs and highway congestion.

To aid local governments in planning for an adequate supply of land to meet existing and future demand for industrial rail access, the Council will analyze existing land uses and zoning to determine:

- The region's land and transportation needs for rail corridor-dependent industries
- The extent to which land for industrial/manufacturing uses with access to rail is threatened by non-industrial development

F11. Local governments located near all of the region’s airports should address land use compatibility and air safety requirements in their comprehensive plans.

The nature of local land use development varies around airports. Only Lake Elmo and Airlake airports remain adjacent to rural land uses, while Anoka County, Eden Prairie, and Forest Lake airports are located in suburban areas. Minneapolis-Saint Paul International Airport, Saint Paul Downtown, Crystal and South Saint Paul airports are in the Urban and Urban Center areas, as designated in *Thrive MSP 2040*.

Joint airport and community zoning boards should be established at each of the system airports to develop and adopt an airport safety zoning ordinance to maintain effective land use and clear zones at the ends of runways. Both the Federal Aviation Administration and the state have regulations regarding appropriate land uses for varying distances at the ends of runways, both on and off the airport property.

The Council also reviews local comprehensive plan updates and plan amendments for airport and community compatibility regarding height and safety zoning, land transportation access to the airport, sewer and water service, and safety and security services.

F12. Communities affected by aircraft noise should incorporate the Land Use Compatibility Guidelines for Aircraft Noise into their local comprehensive plans and ordinances.

In addition to safety, aircraft noise is an issue near airports, often extending farther into the community than safety zoning. The Council has adopted land use compatibility guidelines for aircraft noise as a preventative measure to help communities control noise sensitive land uses around airports. The definition and application of the guidelines is found in [Appendix L](#) along with the most recent noise contours for each airport.

In addition, the Council reviews the long-term comprehensive plans for each airport, including whether the airport plan is compatible with land use and environmental evaluation requirements concerning metro systems, and consistency with regional policies.

F13. Local governments should minimize potential general airspace hazards by adopting federal and state regulations regarding airspace and notifying potential developers of the need to submit FAA form 7460-1 regarding structure height near an airport.

Safety is the number one priority in the planning and providing aviation facilities and services. Local ordinances for all communities should control all proposed structures 250 feet or more above ground level to minimize potential general airspace hazards. Structures over 500 feet tall should be clustered, and no new structures over 1,000 feet tall should be built in the region unless they are replacements or provide for a function that cannot otherwise be accommodated. Local governments should notify the Federal Aviation Administration before approving permits for proposed tall structures.

