

Blue Line LRT Extension

CITY OF BROOKLYN PARK
63RD AVENUE STATION - PEDESTRIAN CROSSING



Existing conditions



NOT TO SCALE

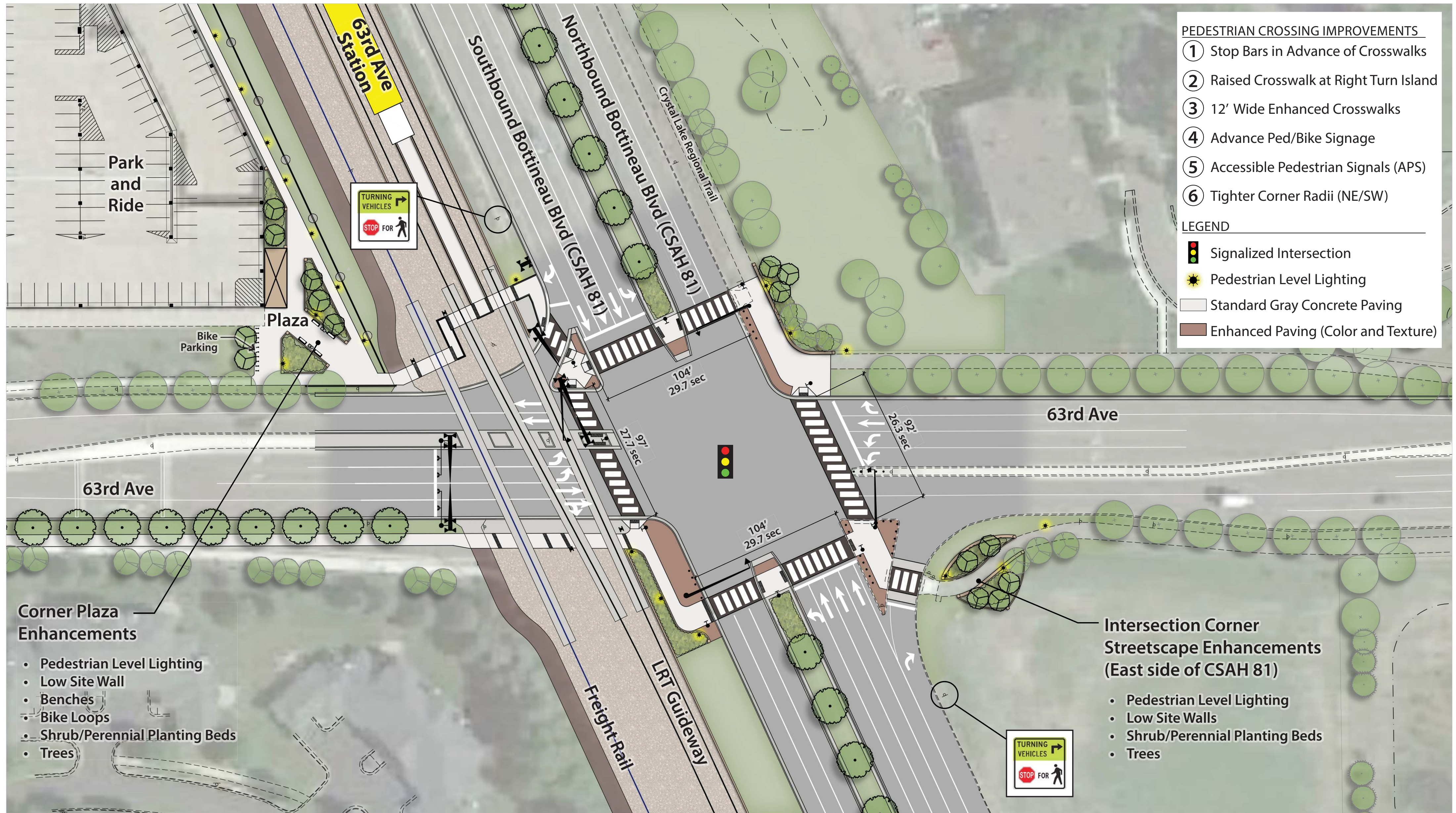


DRAFT
WORK IN PROCESS



Blue Line LRT Extension

CITY OF BROOKLYN PARK 63RD AVENUE STATION - PEDESTRIAN CROSSING



At-grade pedestrian crossing concept



DRAFT
WORK IN PROCESS



Blue Line LRT Extension

Two switchback ramp structures and pedestrian overpass concept (5% max. grade)



Two ramp structures and pedestrian overpass concept (8.33% max. grade)



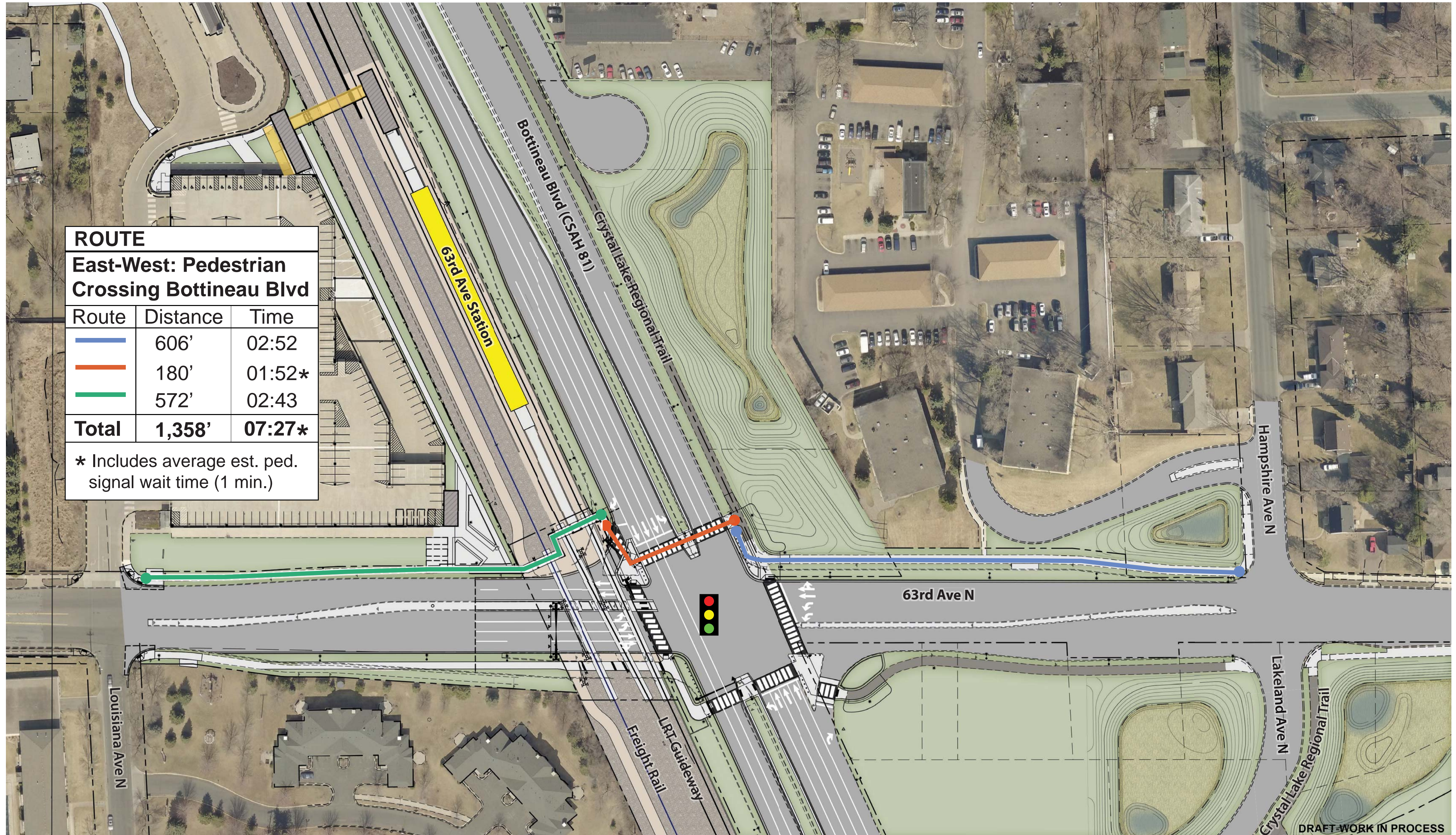
Two vertical circulation buildings and pedestrian overpass concept



DRAFT
WORK IN PROCESS



Blue Line LRT Extension



At-grade pedestrian crossing diagram



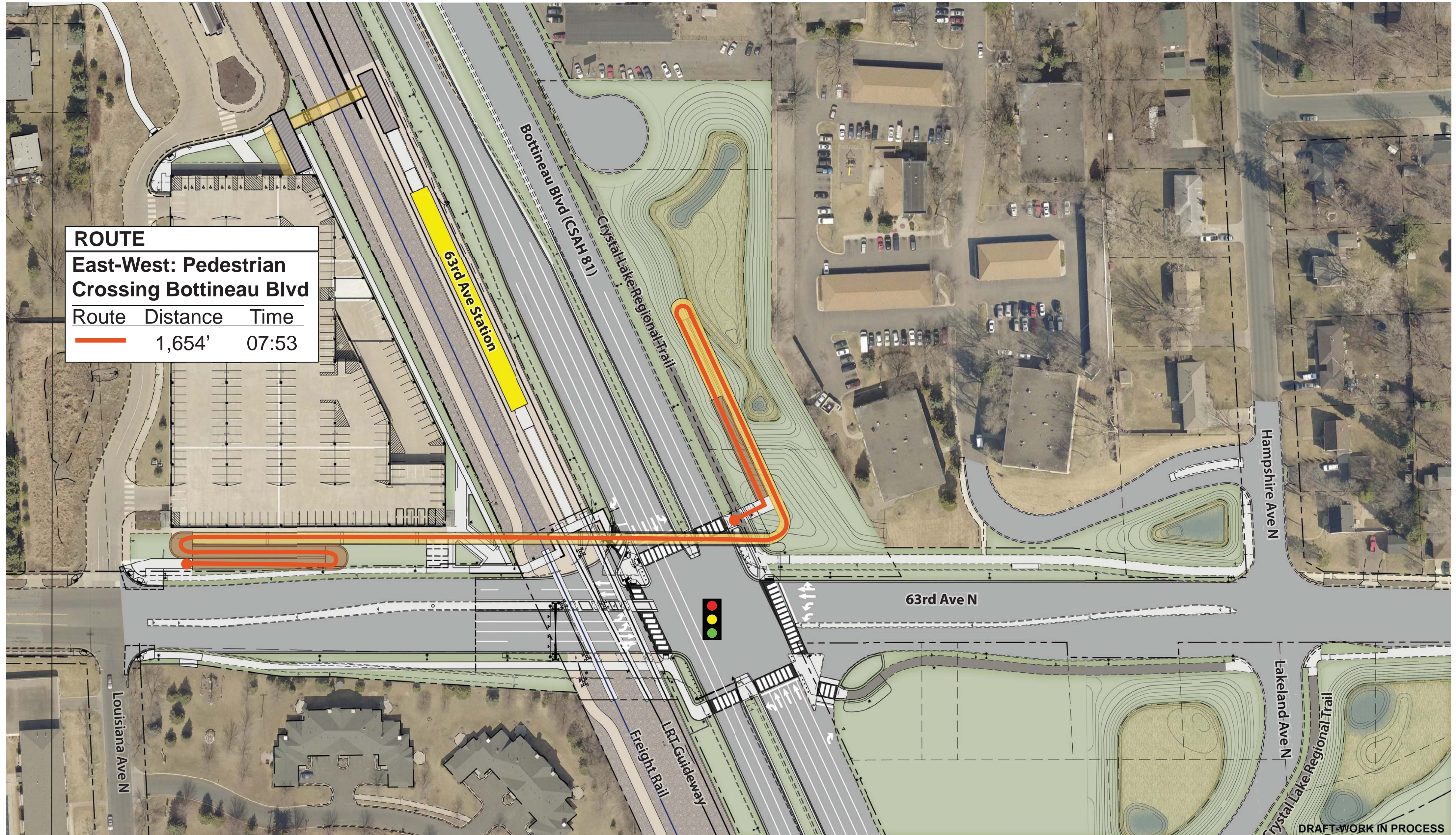
NOT TO SCALE



DRAFT
WORK IN PROCESS



Blue Line LRT Extension



ROUTE		
East-West: Pedestrian Crossing Bottineau Blvd		
Route	Distance	Time
	1,654'	07:53

Two switchback ramp structures and pedestrian overpass (5% max. grade) crossing diagram



NOT TO SCALE

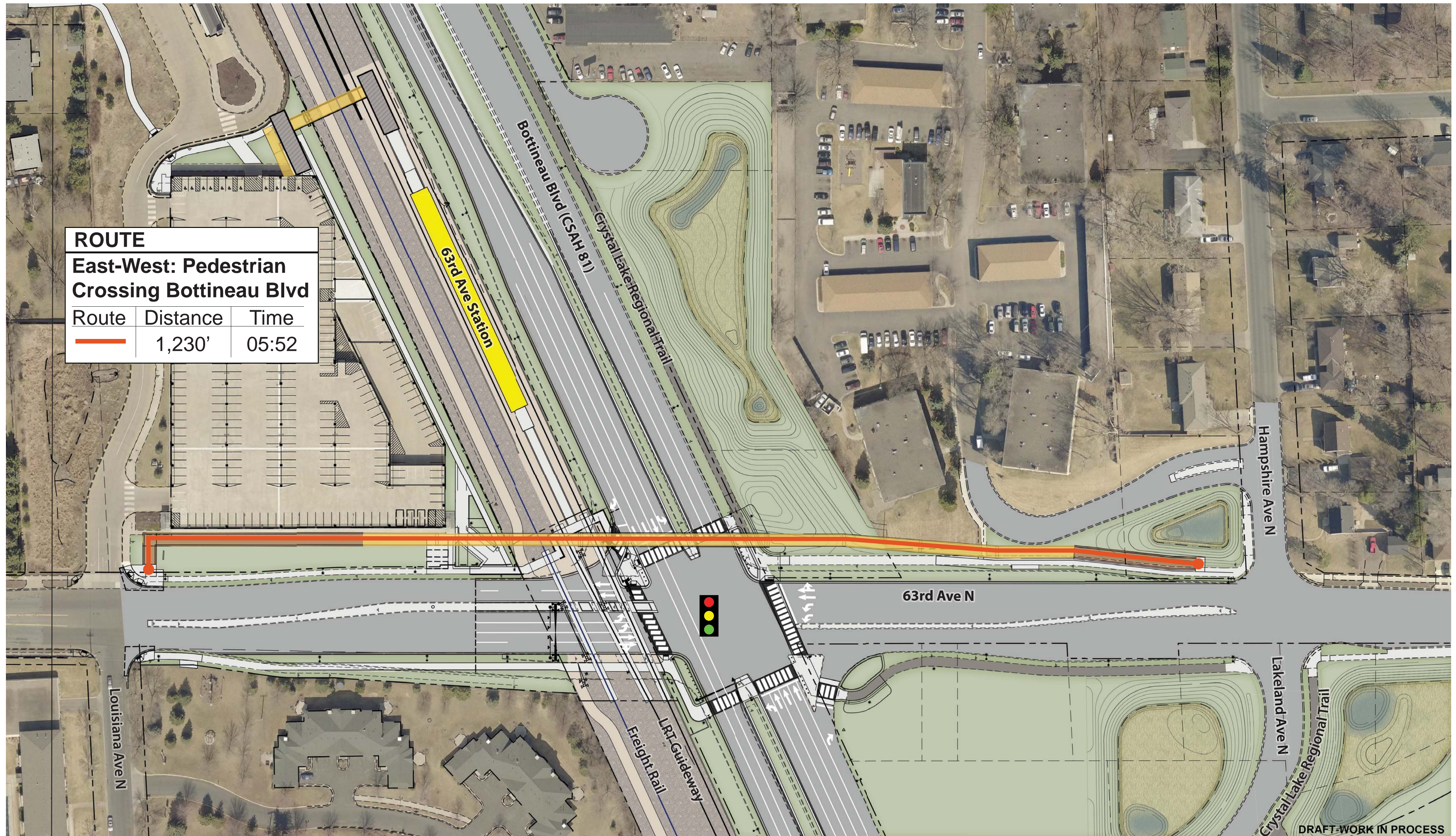


DRAFT
WORK IN PROCESS



DRAFT WORK IN PROCESS

Blue Line LRT Extension



Two ramp structures and pedestrian overpass (8.33% max. grade) crossing diagram



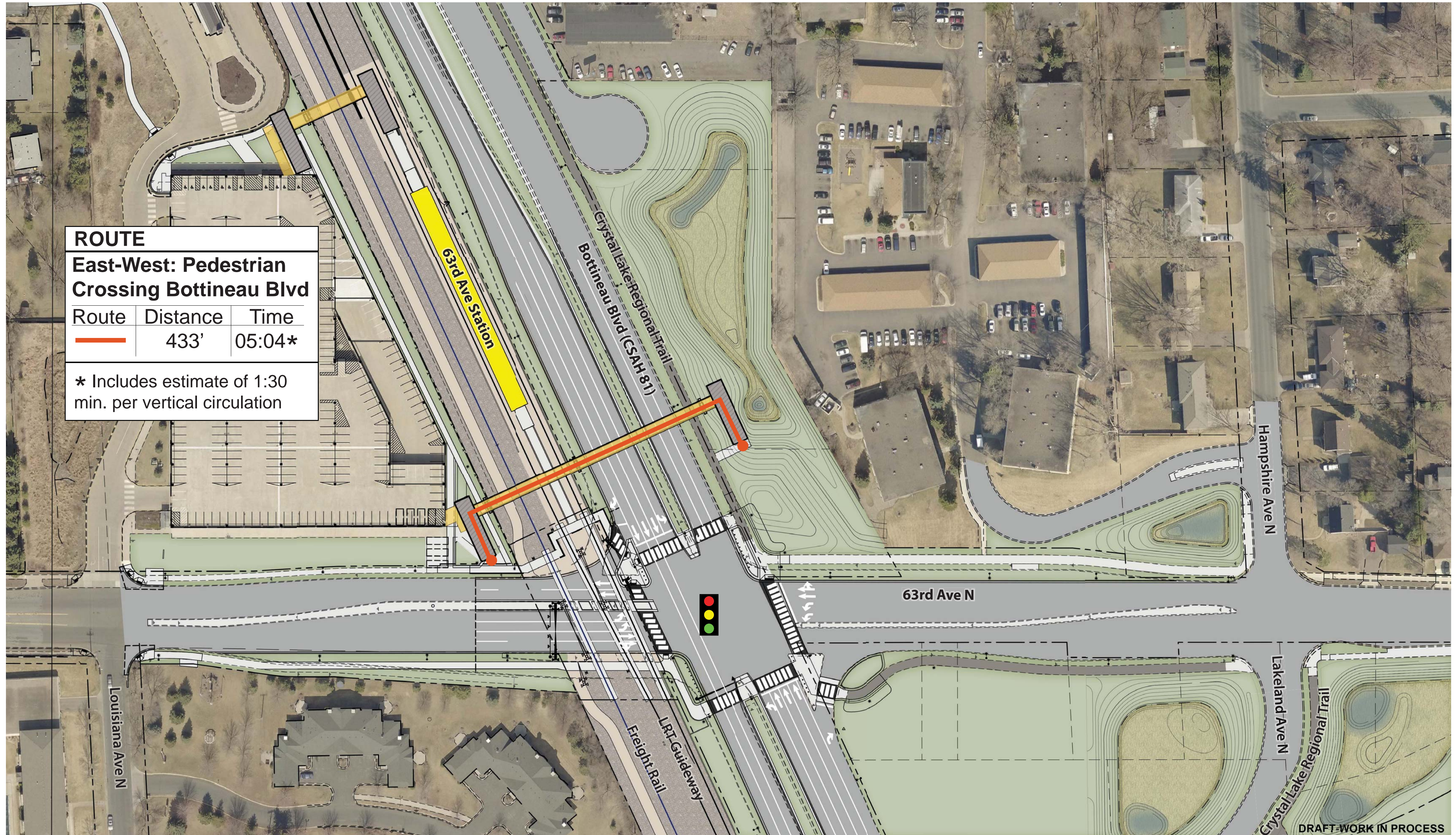
NOT TO SCALE



DRAFT
WORK IN PROCESS



Blue Line LRT Extension



ROUTE
East-West: Pedestrian Crossing Bottineau Blvd

Route	Distance	Time
	433'	05:04*

* Includes estimate of 1:30 min. per vertical circulation

Two vertical circulation buildings and pedestrian overpass crossing diagram



DRAFT
WORK IN PROCESS



DRAFT WORK IN PROCESS