



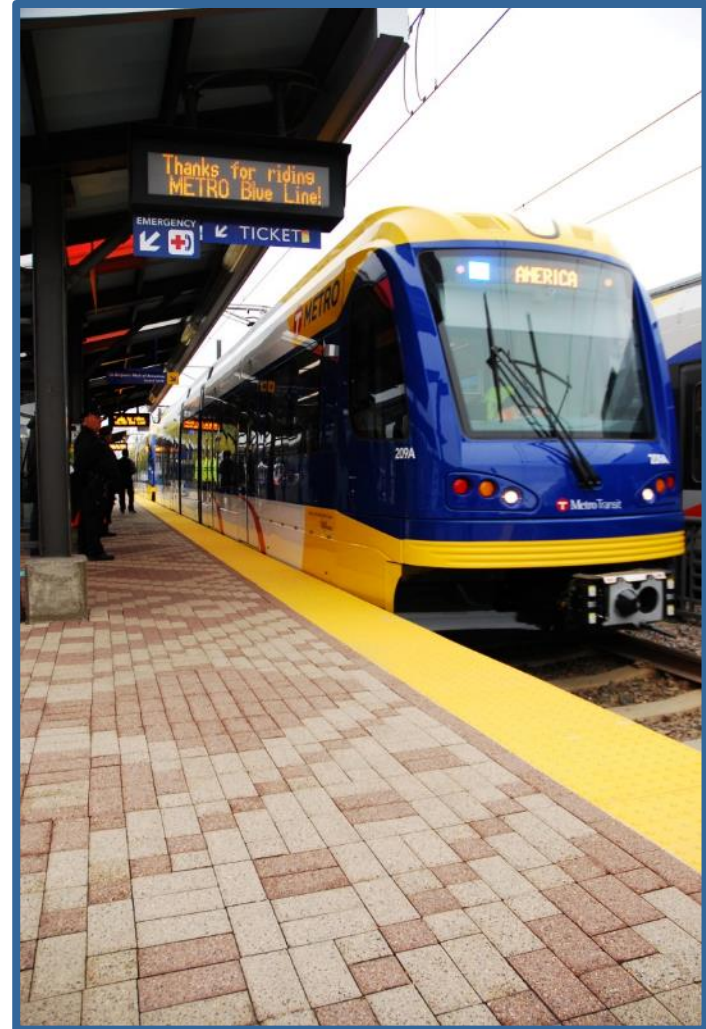
# Blue Line Extension Community Open Houses

November 2016



# Today's Topics

- Welcome
- Project Overview
- Station Design
- Stay Involved

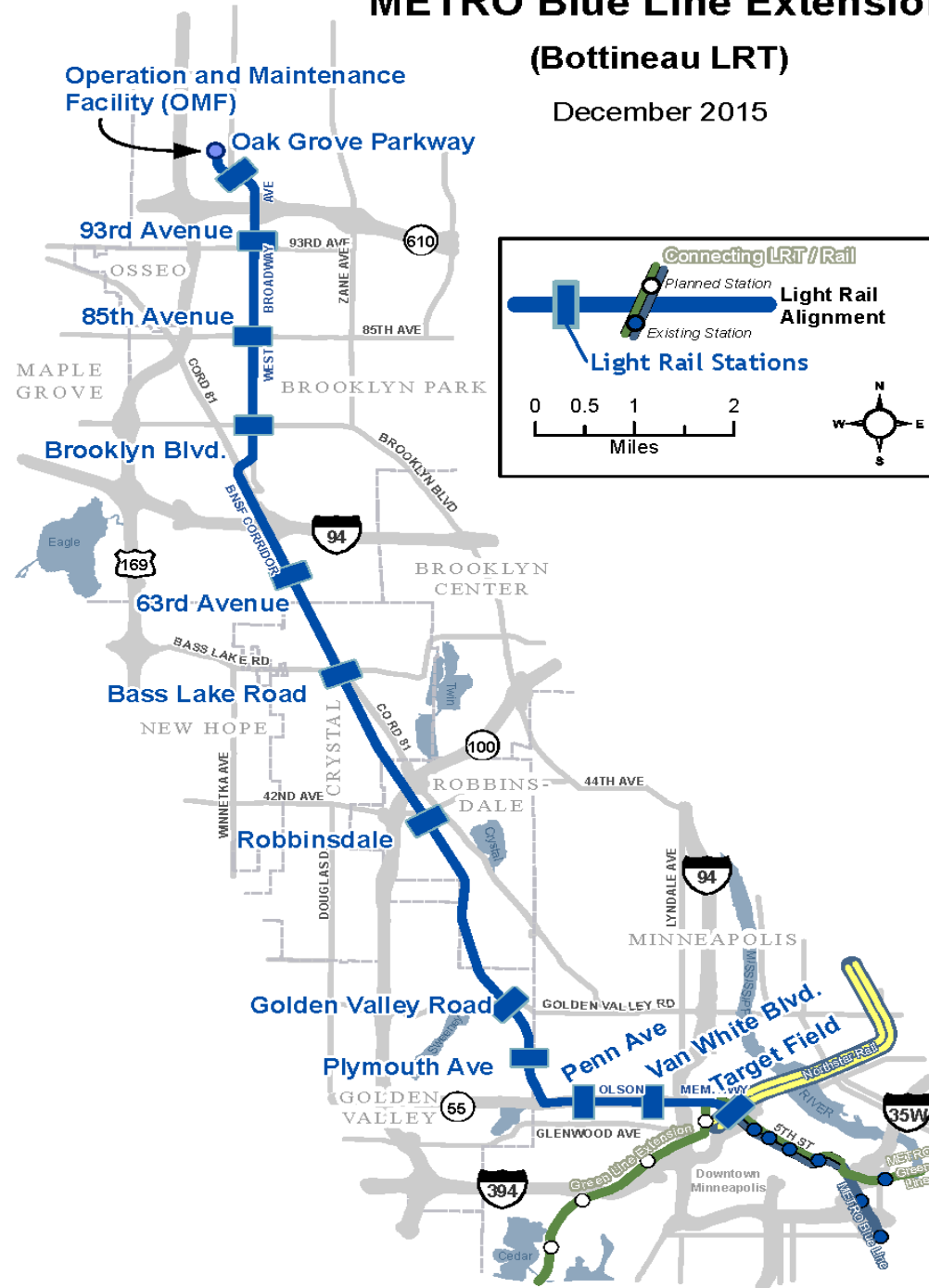


# Project Description

- 11 new LRT stations
- 13 miles of double track
- 27,000 est. rides by 2040
- Serving Brooklyn Park, Crystal, Robbinsdale, Golden Valley & Minneapolis
- Provides one seat Blue Line ride to MSP Airport and Mall of America
- Connections to METRO Green Line, Northstar and bus services

## METRO Blue Line Extension (Bottineau LRT)

December 2015



# Project Timeline

2014-2016

- Project Development

2016

- Environmental/Municipal Consent

2017

- Engineering

2018

- Full Funding Grant Agreement

2018-2020

- Heavy Construction

2021

- Passenger Operations

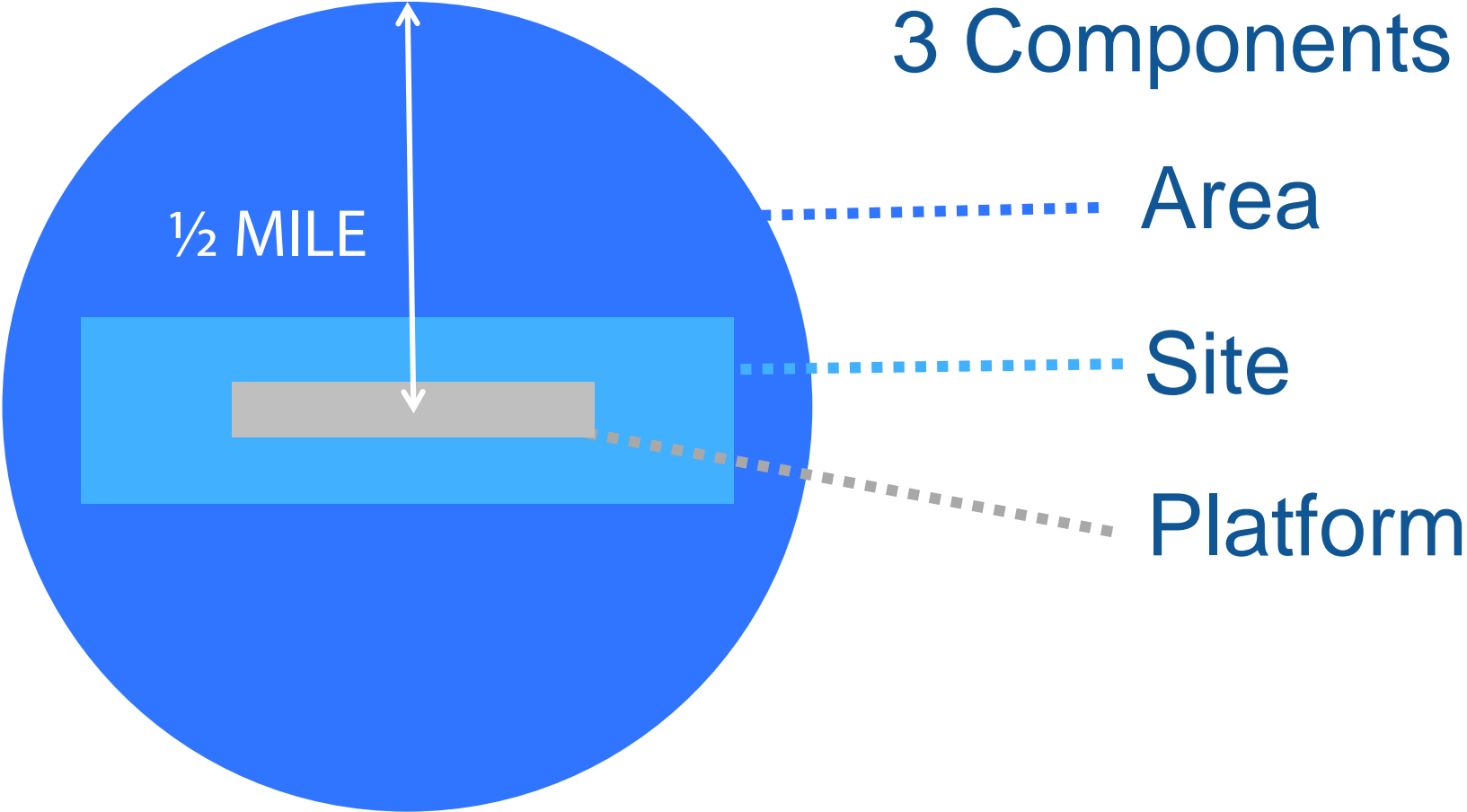


# Station Design Public Engagement

- Purpose:
  - Educate community about station design evolution
  - Receive feedback/ideas about station design concepts:
    - Did we miss anything?
    - Are we on the right track?
    - What did you like/didn't like?



# Stations



# 2014/2015: Station Area Planning

**Figure 3.1: Penn Avenue Station Area**

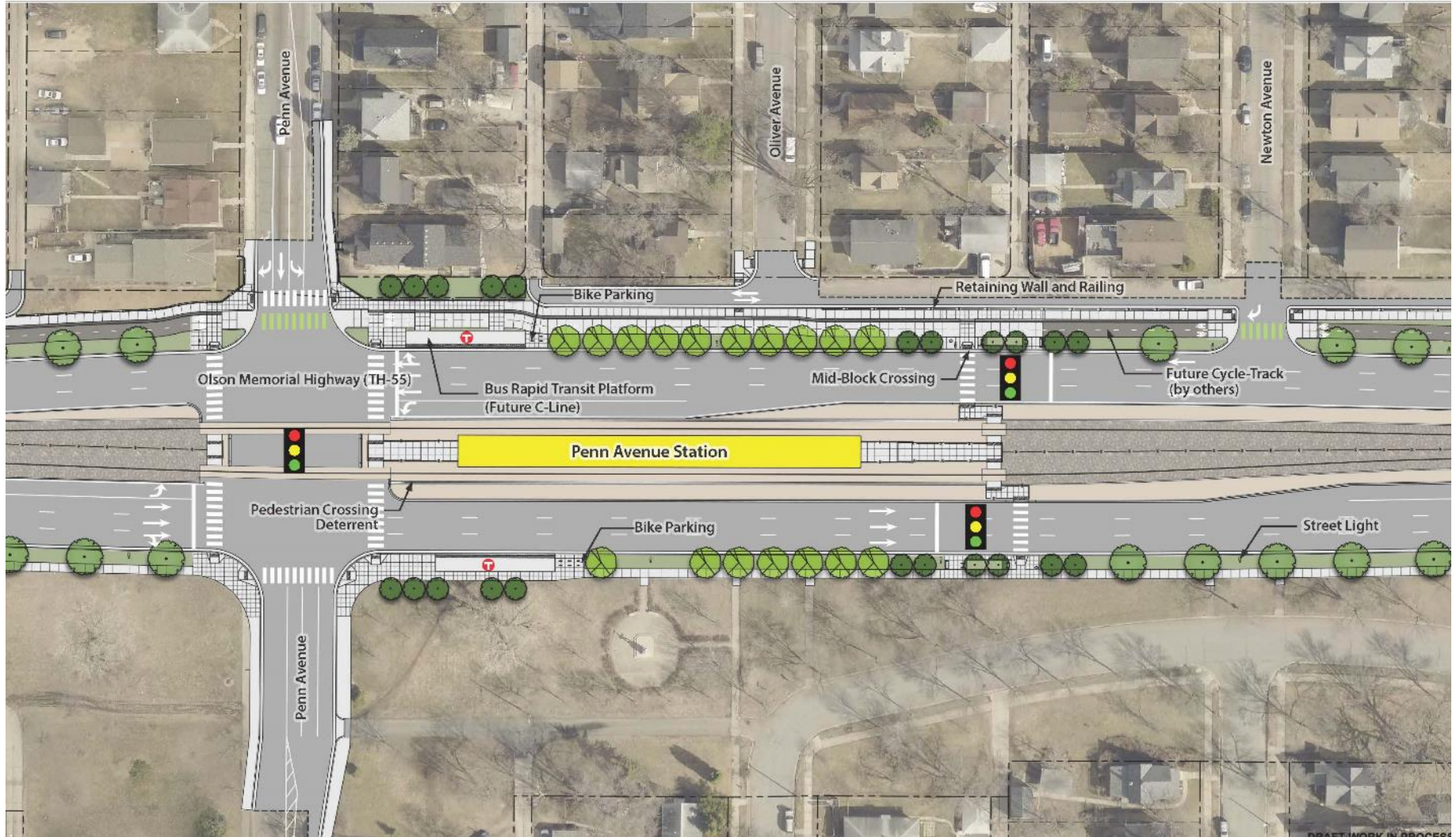
This map shows the half mile buffer and 10 minute walking extent for the station area.

- Planned LRT Station
- Bottineau LRT Alignment
- LRT Station Half Mile Buffer
- Adjacent Station 10-minute Walking Extent
- Penn Station 10-minute Walking Extent
- Railroad

Image provided by Hennepin County



# Station Site





# Station Site Elements

- Station
- Pedestrian access
- Bike facilities
- Wayfinding
- Landscape
- Stormwater
- Bus facilities
- Passenger drop-off
- Park-and-ride



# LRT Station Overview



# LRT Stations

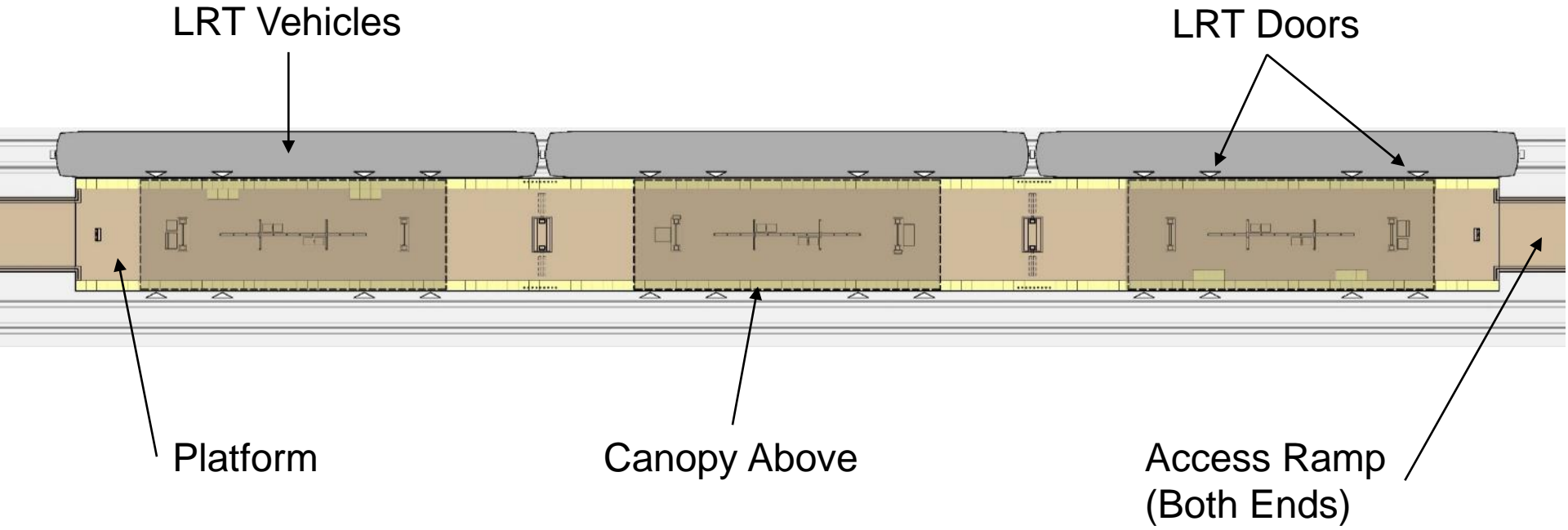
- LRT stations provide access to the light rail system
- LRT stations provide **form** in terms of shelters, and **function** in terms of ticket vending machines, heaters, train information
- LRT stations and access are owned/maintained by Metro Transit

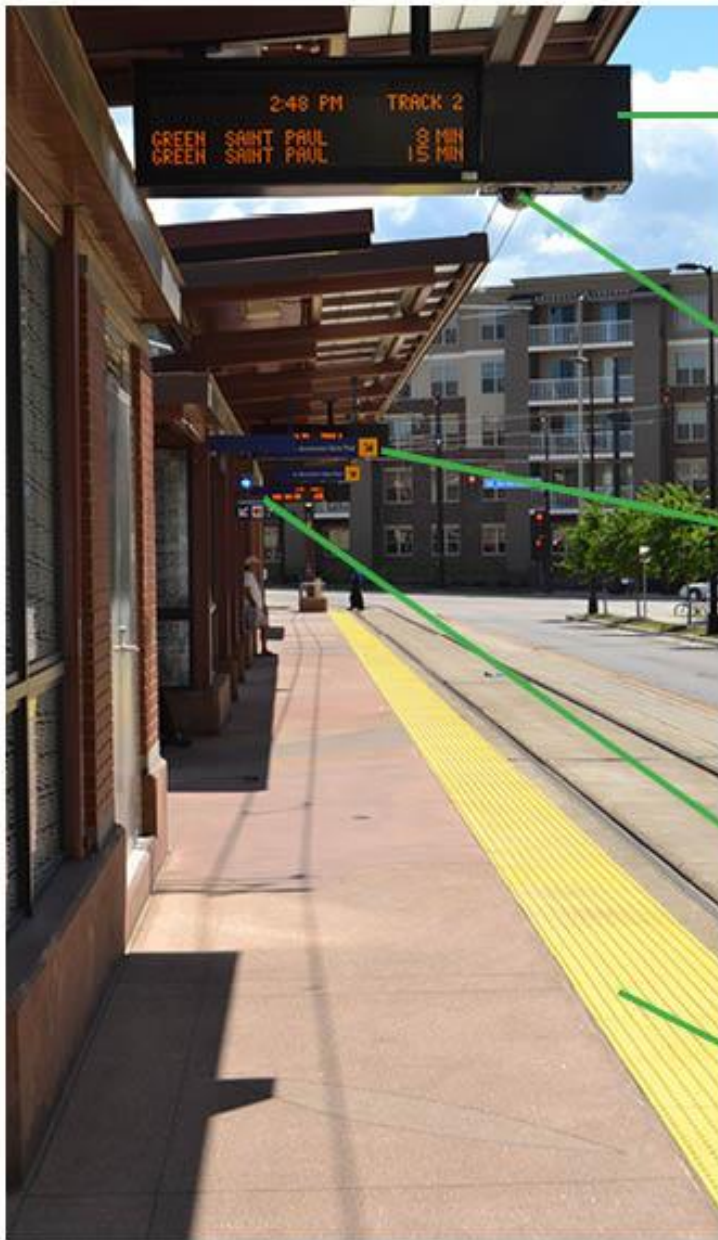


Green Line: Prospect Park Station



# Platform Design





### **Real Time Departure Information**

Updated real time departure information for next two trains

### **Security Cameras**

Monitored 24/7 for enhanced station safety

### **Destination Information**

### **Emergency Phone**

Direct contact to Rail Control Center

### **Platform Tactile Edge**

ADA Compliant, Creates a necessary buffer for riders between edge or platform and rail



**Station Name**

**Platform Shelter**  
Protect from weather elements

**Benches**  
Provide relief for passengers



### Shelter Roof

Protects passengers from the weather elements, enhances station design

### Railings

ADA Compliant, enhances station design, provides relief, and helps to channelize passengers

### Rider Alert Sign

Information regarding train shut down, platform information, alternative routing



### Prohibited Behavior Sign

Information about rules on the platform and while riding the train

### Center Platform Station Access

One platform for the station, access to both east and westbound trains, platform access from both ends





### **Information Kiosk**

Route map, station information and schedule

### **Waste Receptacle**

Maintenance and Facilities collects the waste from station platform

### **Card Validators**

GoTo Fare Cards and UPass for automated fare validator





## Lighting

Access and platform lighting

## Speakers

Announcements from Rail Operations, next train departure information, train arrival to platform information, safety messaging

## Heaters

Push for heat button, provide additional comfort for passengers in the cold weather

## Ticket Vending Machine

Accepts cash and credit/debit cards, pay individual fare or multiple, re-load GoTo Pass



# Station Design



# Station Design Framework

- Respond to **lessons learned**
- Provide **safe and accessible** facilities
- Enhance **customer experience**
- Develop design **consistency**
  - Customer wayfinding
  - Constructability / cost
  - Maintenance
- Respond to **character & context** of each site
- Incorporate **Section 106 / Secretary of Interior** standards



# Sect. 106: Historic Properties Interpretation

- Requires Federal agencies to take into account the effects of their “undertakings” on historic properties
- Osseo Branch Line/Great Northern Railway Historic District (BNSF corridor) and the Grand Rounds Historic District (Theodore Wirth Segment) contain stations will include interpretive elements:
  - 63rd Ave (Osseo Branch)
  - Bass Lake Rd (Osseo Branch)
  - Robbinsdale (Osseo Branch)
  - Golden Valley Rd (Osseo Branch & Grand Rounds)
  - Plymouth Ave (Osseo Branch & Grand Rounds)

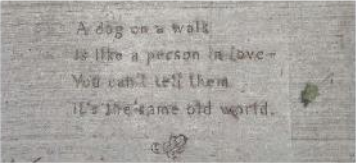


# What are Interpretive Elements?

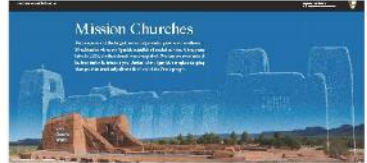
- Interpretation is a communication process for the public to discover the meaning and significance associated with historic resources; it tells a story



Creative Signage



Stamped Concrete



Graphic Panel

SEE



Multiple Languages



Etched Benches



Site-Specific Installation



Braille



Self Reflections/Photo-Ops



Tactiles

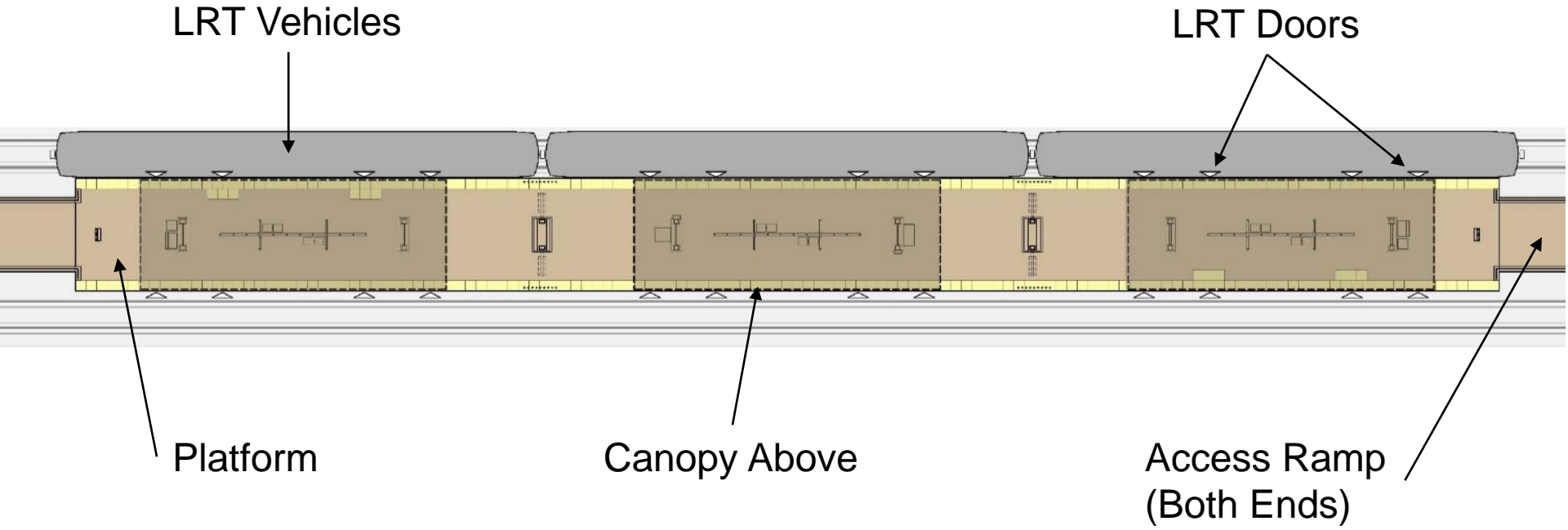
TOUCH



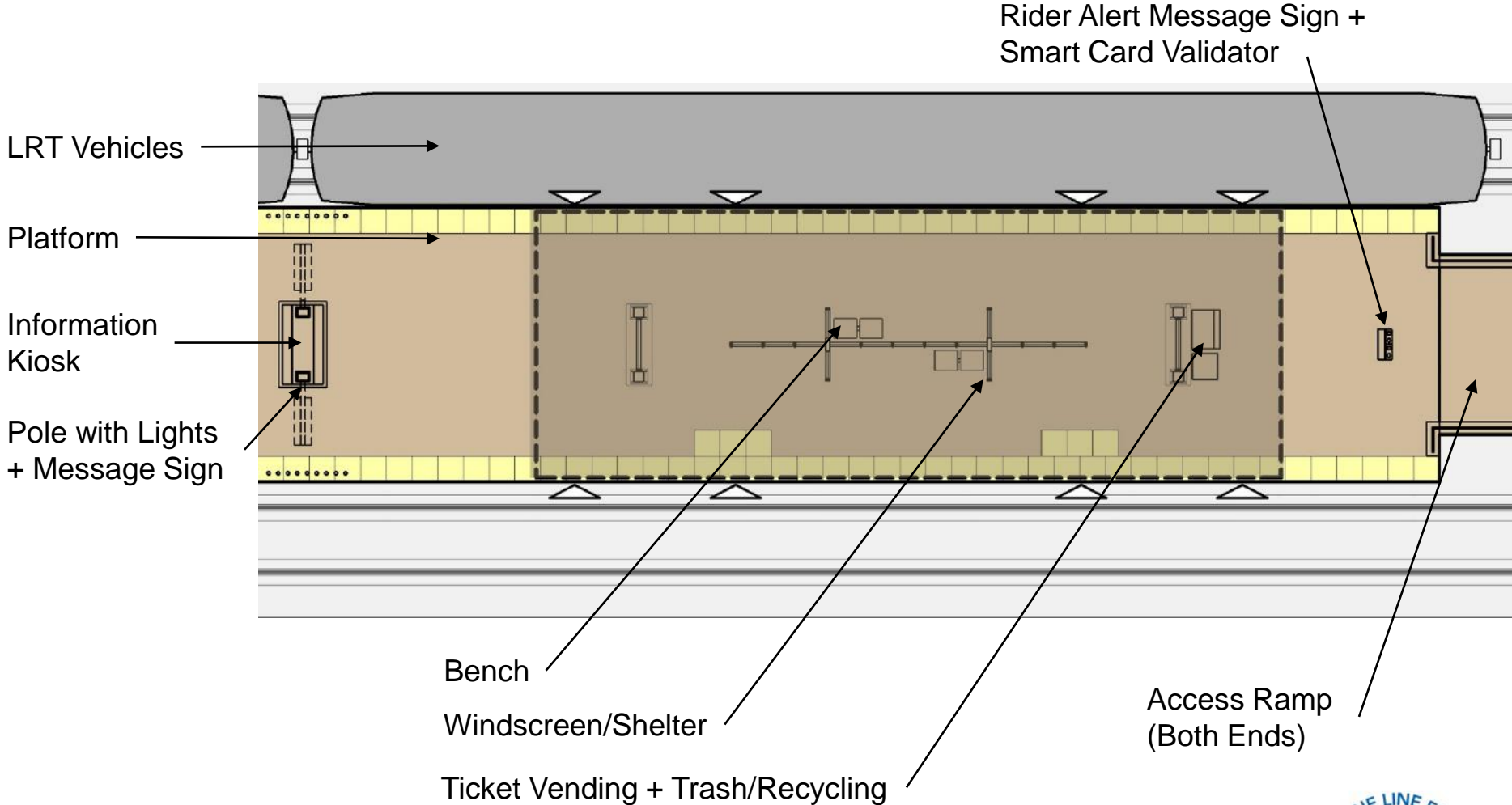
Interactive Graphics



# Station Platform Design



# Station Platform Design



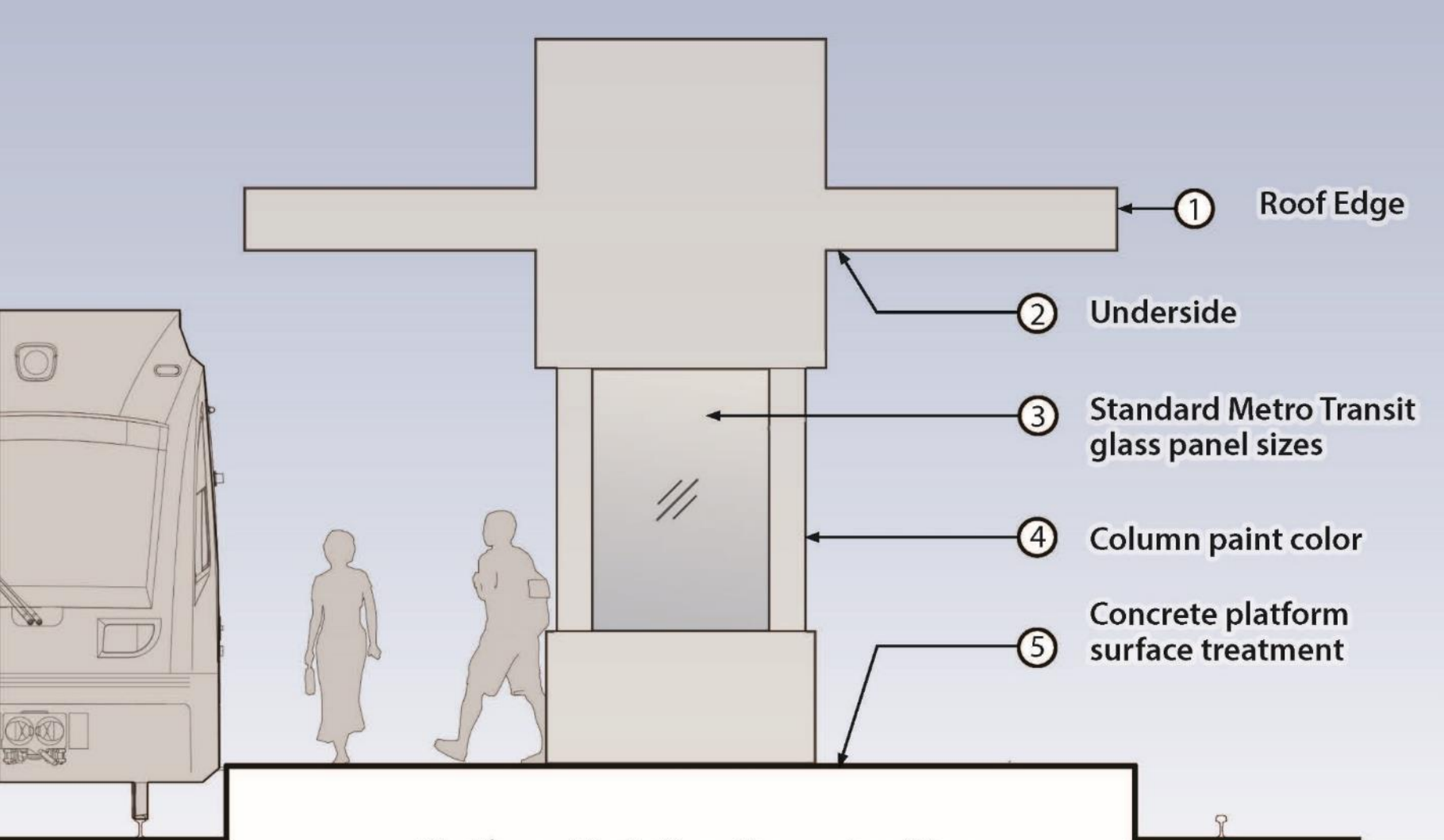
# Station Design Framework

- BPO areas of variability to create identity for each station through use of color, materials, massing
- Metro Transit encourages partnerships with stakeholders & community members to facilitate addition of artwork along BLRT corridor





# Opportunities for Variability



Platform Variation Opportunities

Draft: Work in Process



# How Context and Character Informs Design: Example



# Stadium Village Station



Stadium Village Station Rendering



Stadium Village Station Today



# Target Field Station

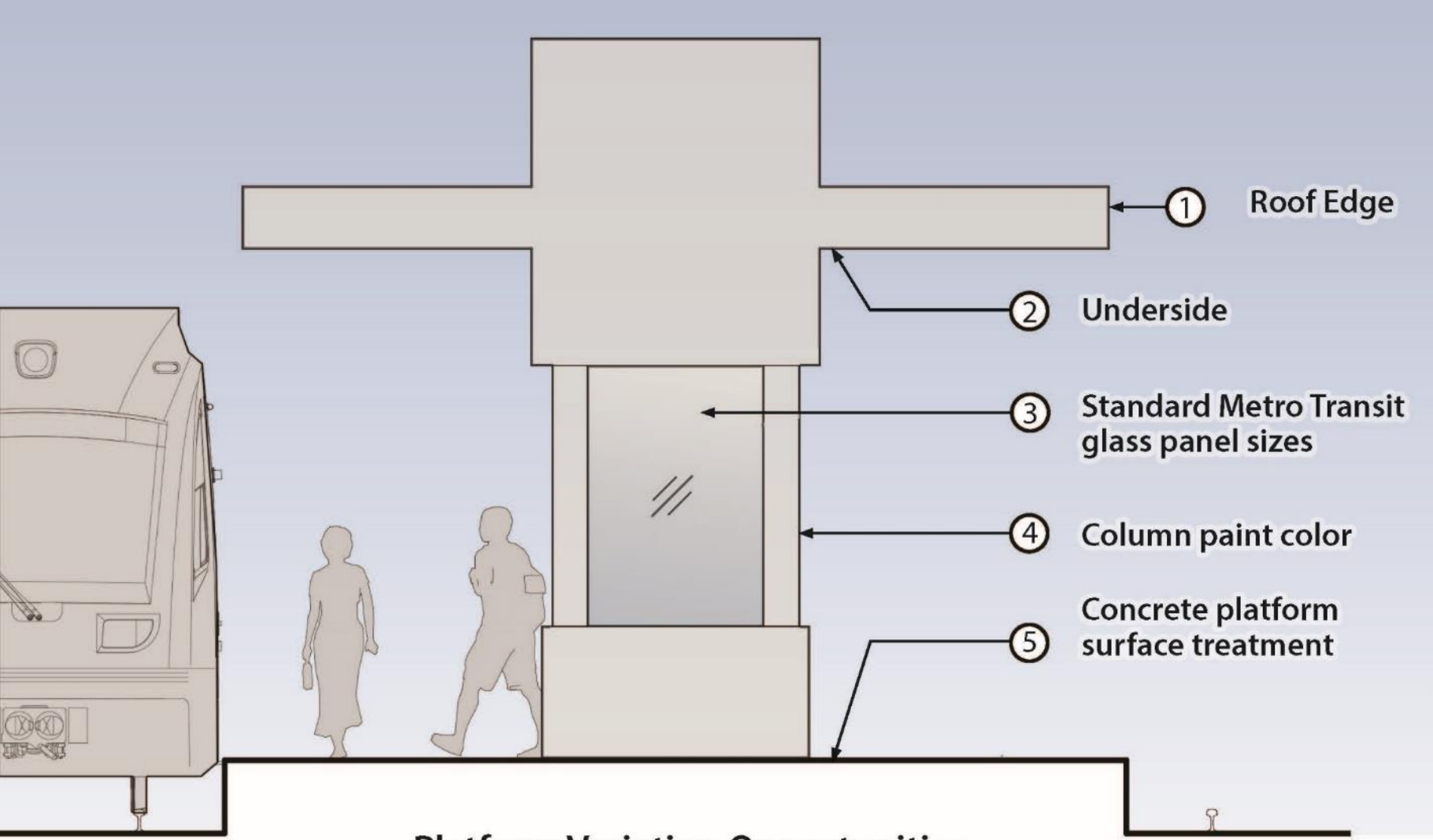
Target Field Station Rendering



Target Field Station Today



# Opportunities for Variability



Platform Variation Opportunities

Draft: Work in Process



# Brainstorming Questions:

- Think about the station site now.....
  - How do you feel about it now?
  - How do you want to feel about it in the future?
  - Tell us what you think are key features?
  - What elements would you like to see strengthened?
  - What elements would you like to see minimized/no longer exist?



# Van White Boulevard Station



# Aerial View of Van White Blvd Station Site



DRAFT-WORK IN PROCESS







**URBAN DOWNTOWN GATEWAY**  
RESIDENTIAL USES

HISTORIC LIBRARY  
COMMERCIAL GROCERY STORE

TRAFFIC  
BIKES  
**GREEN**  
DIVERSITY

**ALIVE**  
HISTORIC AREA

VISIBLE INSTITUTIONS  
SIMILAR TO PENN  
DESTINATION  
DENSITY

**ACTIVE**  
FOOT TRAFFIC  
BOLD AND BRIGHT  
**EXPANSIVE**  
OPEN AND VISIBLE  
COMMUNITY  
CONNECTION TO DOWNTOWN  
DESTINATION

MOVEMENT IN REGION  
TRANSITION CONNECTION

**SAFETY**  
UNIQUE  
PLANNED COMMUNITY

CONTEXT & CHARACTER WORKSHOPS

**URBAN DOWNTOWN GATEWAY**  
RESIDENTIAL USES

HISTORIC LIBRARY  
COMMERCIAL GROCERY STORE

TRAFFIC  
BIKES  
**GREEN**  
DIVERSITY

**ALIVE**  
HISTORIC AREA

VISIBLE INSTITUTIONS  
SIMILAR TO PENN  
DESTINATION  
DENSITY

**ACTIVE**  
FOOT TRAFFIC  
BOLD AND BRIGHT  
**EXPANSIVE**  
OPEN AND VISIBLE  
COMMUNITY  
CONNECTION TO DOWNTOWN  
DESTINATION

MOVEMENT IN REGION  
TRANSITION CONNECTION

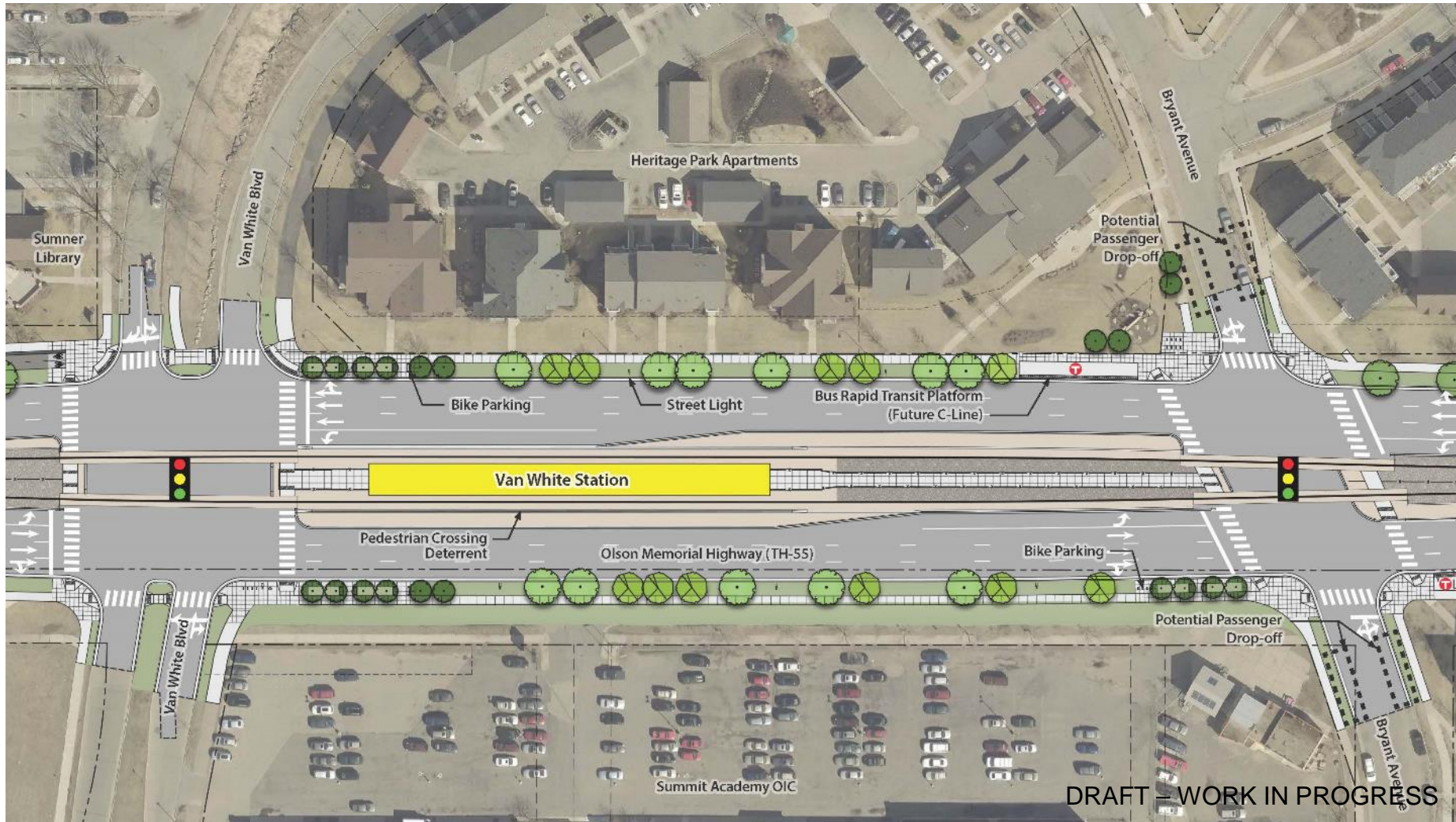
**SAFETY**  
UNIQUE  
PLANNED COMMUNITY

STATION DESIGN CONCEPTS

# Van White Blvd Station Context & Character Words



# Station Plan Concept





DRAFT - WORK IN PROGRESS

## View from Olson Memorial Highway looking Northeast





DRAFT - WORK IN PROGRESS

# View from platform entry looking West



# Penn Avenue Station



# Aerial View of Penn Ave Station Site



DRAFT-WORK IN PROCESS





MAJOR TRANSIT CORRIDOR  
COMMUNITY ART

EXPANSIVE

URBAN BEAUTY  
NO PARKING

VEHICLES

**GREEN**  
DROP-OFF NEEDS  
CHANGE  
OLSON AS BARRIER

FUNCTION

NEIGHBORHOODS

COMMERCIAL ACTIVITY  
CONNECTIONS TO MAJOR STREETS

HISTORIC

URBAN

DEVELOPMENT

INVITING

RESIDENTIAL BLOCKS

BUSY

**CONNECTIVITY**  
NEIGHBORHOOD TO DOWNTOWN TRANSITION  
"NEIGHBORHOOD STATION"

COMMUNITY CORRIDOR

**CONTEXT & CHARACTER WORKSHOPS**

MAJOR TRANSIT CORRIDOR  
COMMUNITY ART

EXPANSIVE

URBAN BEAUTY  
NO PARKING

VEHICLES

**GREEN**  
DROP-OFF NEEDS  
CHANGE  
OLSON AS BARRIER

FUNCTION

NEIGHBORHOODS

COMMERCIAL ACTIVITY  
CONNECTIONS TO MAJOR STREETS

HISTORIC

URBAN

DEVELOPMENT

INVITING

RESIDENTIAL BLOCKS

BUSY

**CONNECTIVITY**  
NEIGHBORHOOD TO DOWNTOWN TRANSITION  
"NEIGHBORHOOD STATION"

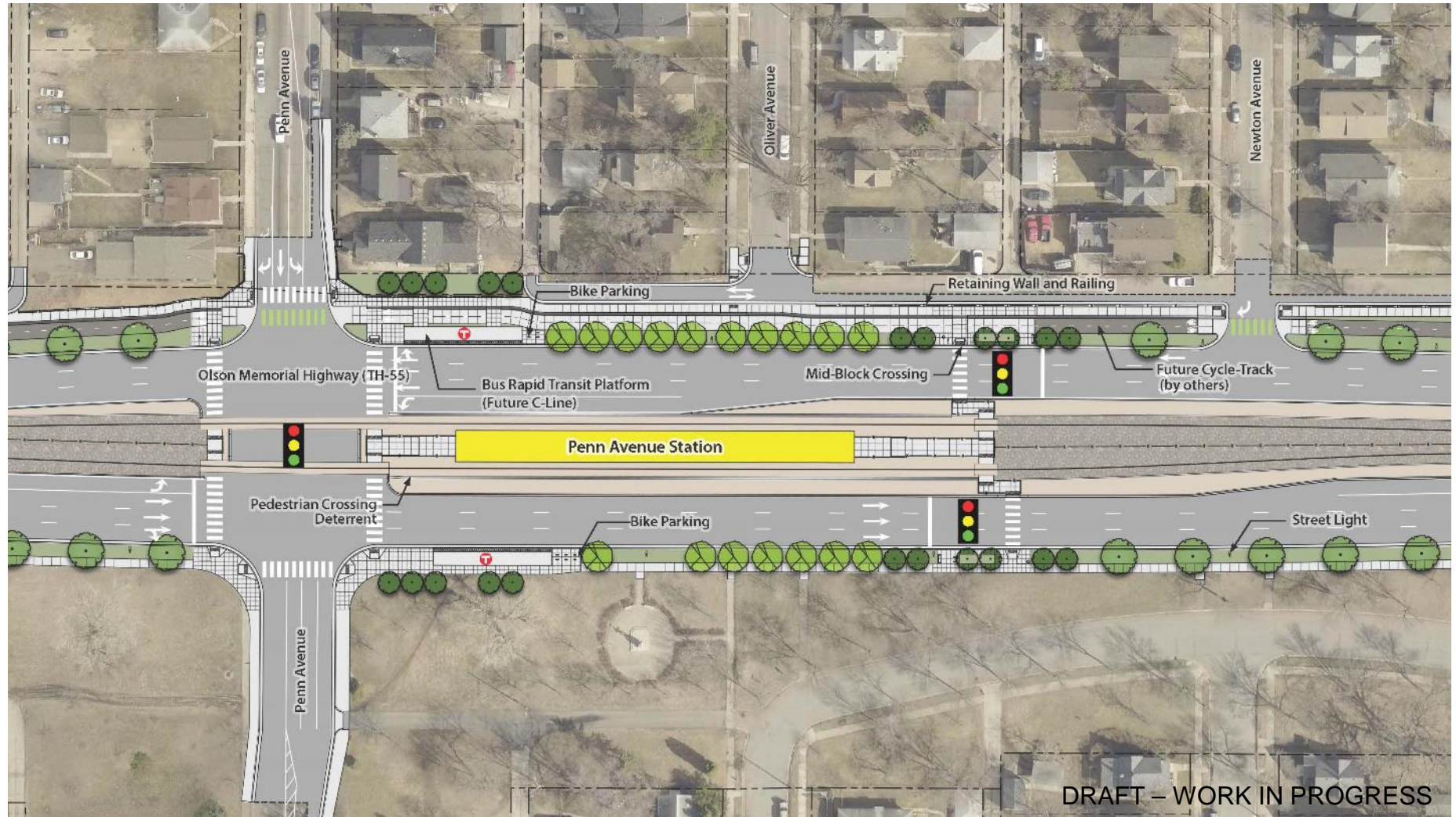
COMMUNITY CORRIDOR

**STATION DESIGN CONCEPTS**

# Penn Avenue Station Context & Character Words



# Station Plan Concept







# View from Olson Memorial Highway looking West





DRAFT – WORK IN PROGRESS

## View from platform entry looking East



# Plymouth Avenue Station



# Aerial View of Plymouth Ave Station



DRAFT-WORK IN PROCESS





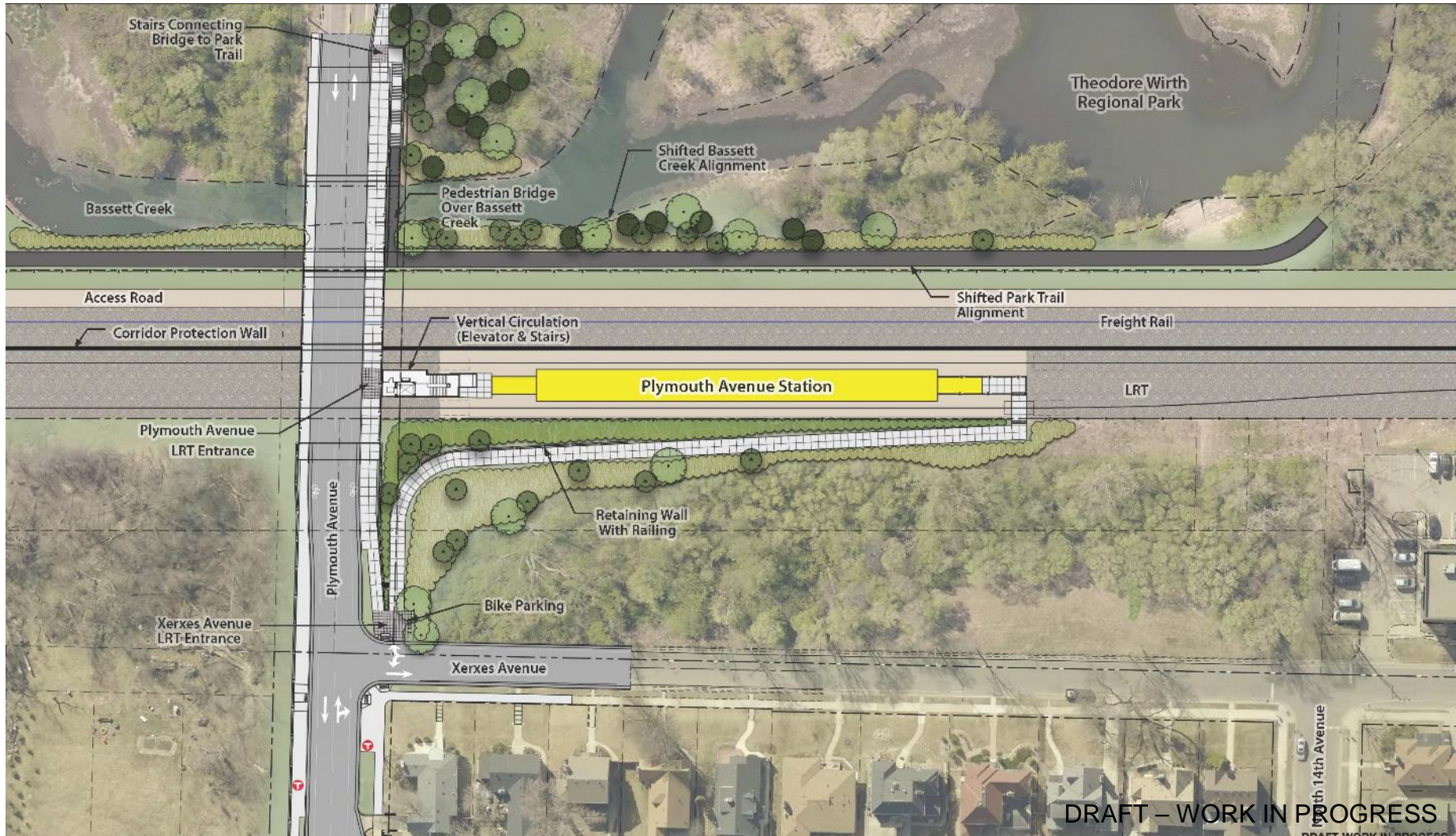
PARK TO NEIGHBORHOODS  
 OPEN VISTAS  
 NATURAL FORMS  
 CREEK LINEAR BARRIERS  
 GATEWAY  
 CONFLUENCE ACCESS  
 SUNKEN  
 EDGE OF CITY MEETS NATURE  
 "THE PARK'S STATION"  
 DIFFERENCE BETWEEN NIGHT AND DAY  
 "SHOULD I BE HERE?"  
 INFORMAL USES  
 FREIGHT CORRIDOR  
 HISTORIC BUILDINGS  
 TRANSITION  
 HISTORIC  
 HISTORY AND FUNCTION  
 REGIONAL DESTINATION  
 DARK  
 FUNCTION AND RECREATION  
 YEAR-ROUND RECREATION  
 CONTEXT & CHARACTER WORKSHOPS

PARK TO NEIGHBORHOODS  
 OPEN VISTAS  
 NATURAL FORMS  
 CREEK LINEAR BARRIERS  
 GATEWAY  
 CONFLUENCE ACCESS  
 SUNKEN  
 EDGE OF CITY MEETS NATURE  
 "THE PARK'S STATION"  
 DIFFERENCE BETWEEN NIGHT AND DAY  
 "SHOULD I BE HERE?"  
 INFORMAL USES  
 FREIGHT CORRIDOR  
 HISTORIC BUILDINGS  
 TRANSITION  
 HISTORIC  
 HISTORY AND FUNCTION  
 REGIONAL DESTINATION  
 DARK  
 FUNCTION AND RECREATION  
 YEAR-ROUND RECREATION  
 STATION DESIGN CONCEPTS

# Plymouth Avenue Station Context & Character Words



# Station Plan Concept





DRAFT – WORK IN PROGRESS

# View on Plymouth Ave bridge looking North at LRT station entrance – stairs and elevator





**View looking South from walkway access**







DRAFT - WORK IN PROGRESS

# View looking East from trail access



# Golden Valley Road Station



# Aerial View of Golden Valley Rd Station Site



DRAFT-WORK IN PROCESS





ACCESS TO GRAND ROUNDS HISTORY NATURE GATEWAY TO GOLDEN VALLEY CONVENIENCE VISIBILITY LINEAR CONTAINED NEIGHBORHOOD STATION 45TH PARALLEL

NAVIGATIONAL CHALLENGES GATEWAY TO GOLDEN VALLEY PARKING CROSSROADS RAILROADS LOCALIZED TRAILHEAD BACKDOOR TO PARK CONNECTIONS WOODED ENVIRONMENT

HIDDEN AUTOS, BIKES, PEDESTRIANS

**CONTEXT & CHARACTER WORKSHOPS**

ACCESS TO GRAND ROUNDS HISTORY NATURE GATEWAY TO GOLDEN VALLEY CONVENIENCE VISIBILITY LINEAR CONTAINED NEIGHBORHOOD STATION 45TH PARALLEL

NAVIGATIONAL CHALLENGES GATEWAY TO GOLDEN VALLEY PARKING CROSSROADS RAILROADS LOCALIZED TRAILHEAD BACKDOOR TO PARK CONNECTIONS WOODED ENVIRONMENT

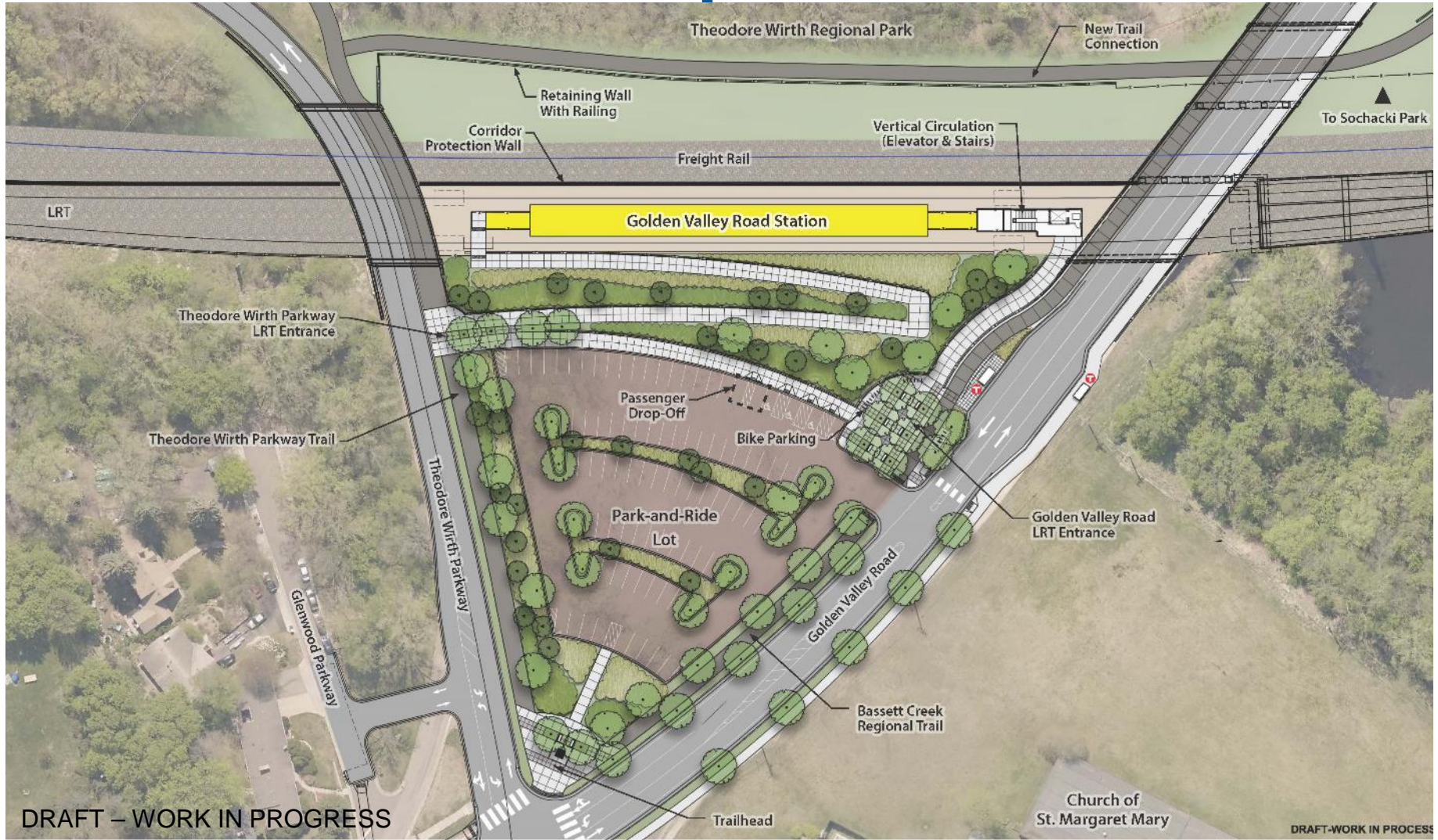
HIDDEN AUTOS, BIKES, PEDESTRIANS

**STATION DESIGN CONCEPTS**

# Golden Valley Rd Station Context & Character Words



# Station Plan Concept





DRAFT – WORK IN PROGRESS

# View looking West at LRT station entrance – stairs and elevator





DRAFT – WORK IN PROGRESS

## View looking West from walkway





DRAFT – WORK IN PROGRESS

## View of LRT station looking North





# Robbinsdale Station



# Aerial View of Robbinsdale Station Site

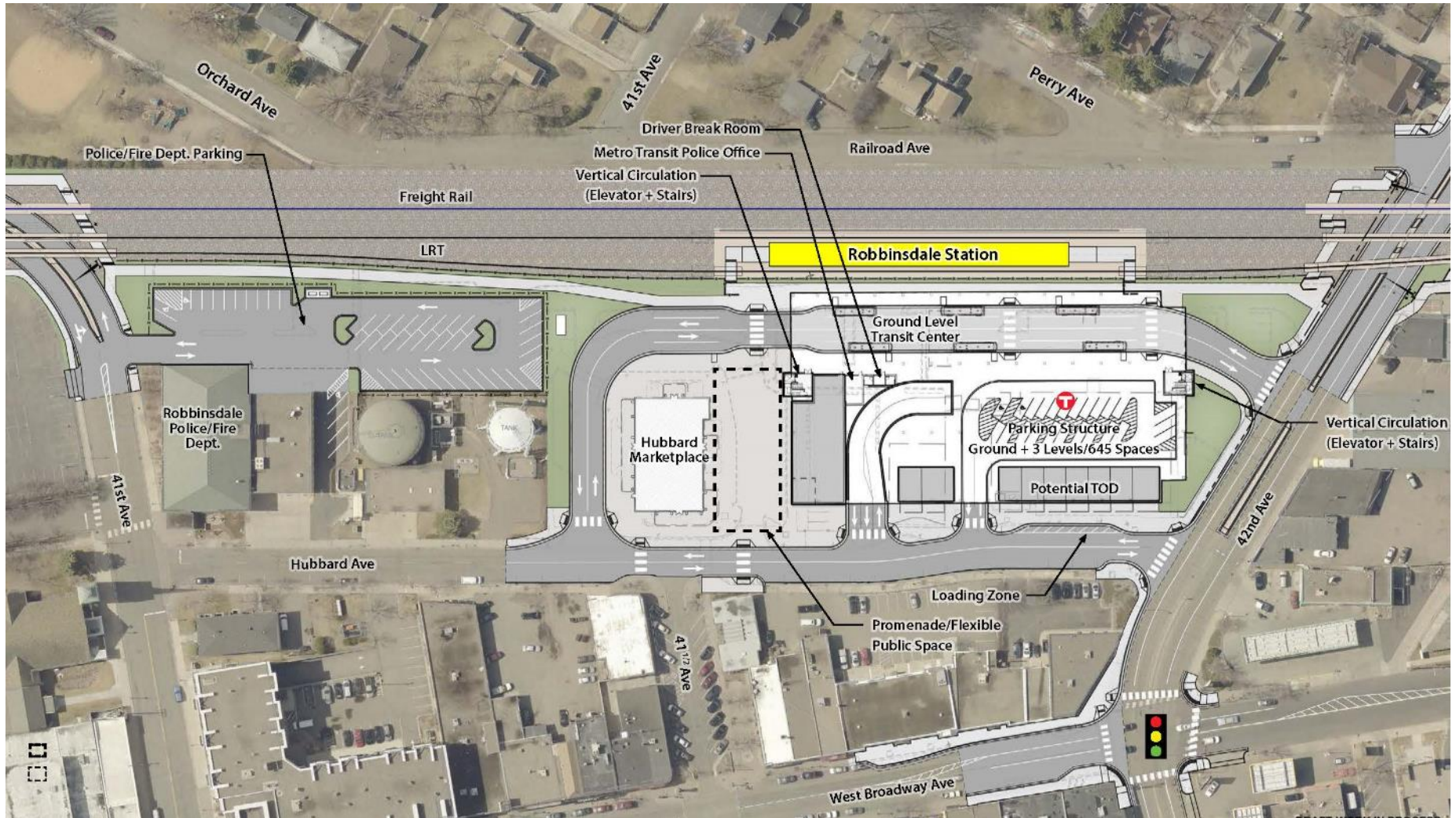




# Robbinsdale Station Context & Character Words



# Station Plan Concept





DRAFT – WORK IN PROGRESS

## View from Railroad Ave looking West





DRAFT – WORK IN PROGRESS

## View from Hubbard Ave looking West





DRAFT - WORK IN PROGRESS

# View of transit center and station looking North



# Bass Lake Road Station





# Aerial View of Bass Lake Rd Station Site



DRAFT-WORK IN PROCESS





**BECKER PARK** MIXTURE OF USES  
 FOOT TRAFFIC CONCERNS  
 "OLD SCHOOL"  
 PARK AND RIDE CONNECTION  
**RETAIL**  
 BITS OF EVERYTHING  
 COMMERCIAL ACCESS  
 WAVES OF REDEVELOPMENT  
**MAIN STREET**  
 CRYSTAL AUTO-ORIENTED  
 AIRPORT  
**ENTRYWAY**  
 INDUSTRIAL-FEEL  
 REDUCE IMPACT  
 "WHAT IS THIS PLACE?"  
 DISAPPEAR INTO LANDSCAPE  
 CELL TOWER  
**CONNECTION**  
 TO PARK  
 ACCESS TO SHOPPING  
**GREENERY**  
 HEIGHTENED VISIBILITY  
 BECOME WELCOMING  
 PIECEMEAL  
**TO PARK**  
 DOWNTOWN  
 TRANSITION  
**SEEKING IDENTITY**  
 CROSSROADS

**CONTEXT & CHARACTER WORKSHOPS**

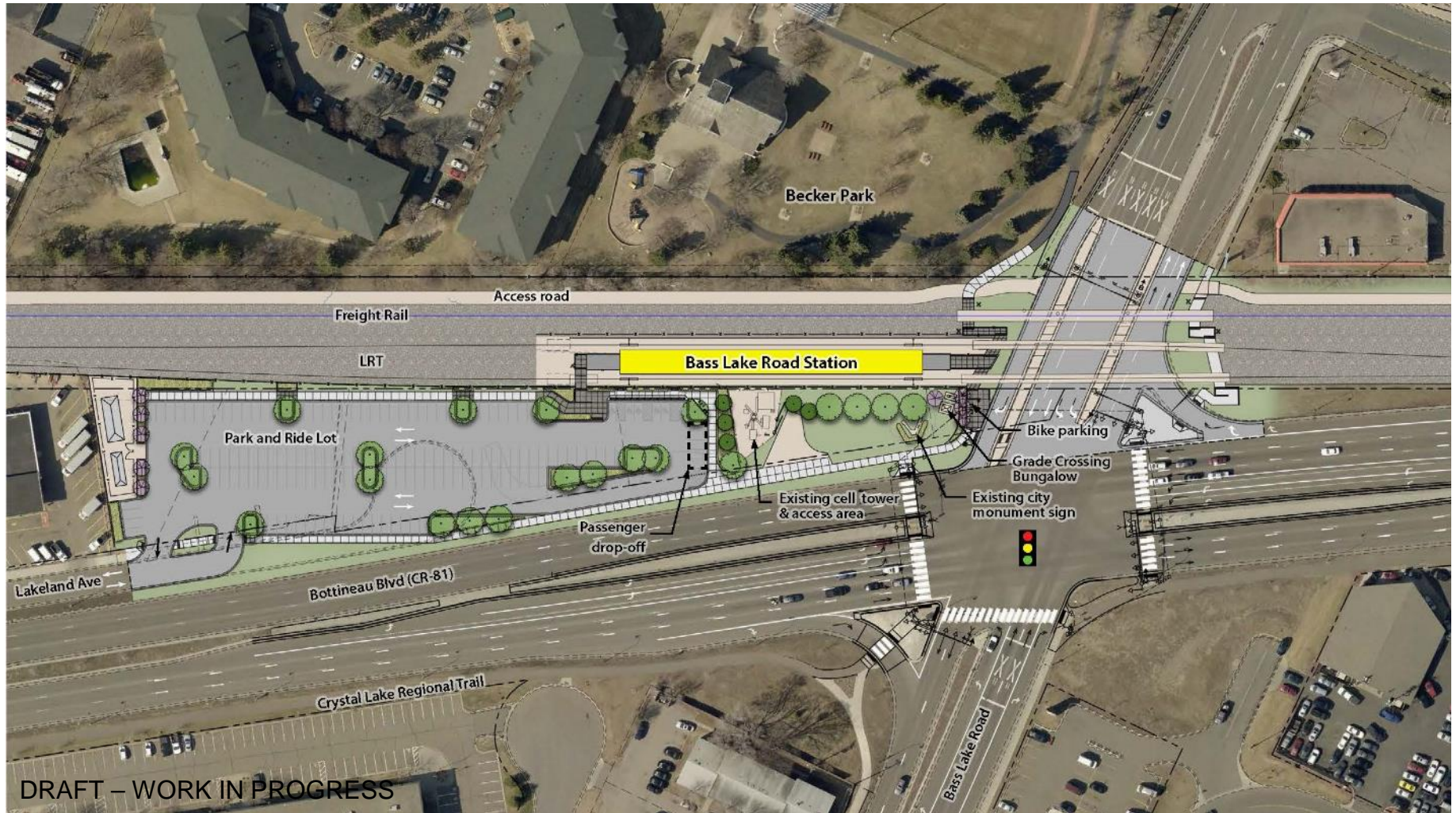
**BECKER PARK** MIXTURE OF USES  
 FOOT TRAFFIC CONCERNS  
 "OLD SCHOOL"  
 PARK AND RIDE CONNECTION  
**RETAIL**  
 BITS OF EVERYTHING  
 COMMERCIAL ACCESS  
 WAVES OF REDEVELOPMENT  
**MAIN STREET**  
 CRYSTAL AUTO-ORIENTED  
 AIRPORT  
**ENTRYWAY**  
 INDUSTRIAL-FEEL  
 REDUCE IMPACT  
 "WHAT IS THIS PLACE?"  
 DISAPPEAR INTO LANDSCAPE  
 CELL TOWER  
**CONNECTION**  
 TO PARK  
 ACCESS TO SHOPPING  
**GREENERY**  
 HEIGHTENED VISIBILITY  
 BECOME WELCOMING  
 PIECEMEAL  
**TO PARK**  
 DOWNTOWN  
**SEEKING IDENTITY**  
 CROSSROADS

**STATION DESIGN CONCEPTS**

# Bass Lake Road Station Context & Character Words



# Station Plan Concept





DRAFT – WORK IN PROGRESS

# View from Bass Lake Rd looking South





DRAFT – WORK IN PROGRESS

# View of station looking Northwest from Park and Ride



# 63<sup>rd</sup> Avenue Station



# Aerial View of 63<sup>rd</sup> Ave Station Site



DRAFT-WORK IN PROCESS





REGIONAL TRAIL

CONNECTIONS

FUTURE DENSITY DESIRE

CAR-ORIENTED

CROSSROADS

NEED FOR PLAZA

PARK AND RIDE CONNECTION

**PASS-THROUGH**

SHOPPING OPPORTUNITY

COMMERCIAL ACCESS

WAVES OF REDEVELOPMENT

GATHERING

WARMTH

AUTO-ORIENTED

**TRANSIT NEED**

WELCOMING FEEL

RESIDENTIAL

NEIGHBORHOOD

ROAD IMPACT ON BUSINESS

ZERO VEHICLE HOUSEHOLDS

OVERBUILT

**CREATE PLACE**

BOLD COLORS / PATTERNS

UNFINISHED

SPREAD OUT

WALK-UP

STATION

DON'T OVERDO IT

CAN'T SEE

FROM ROAD

CLEARING

CONTEXT & CHARACTER WORKSHOPS

REGIONAL TRAIL

CONNECTIONS

FUTURE DENSITY DESIRE

CAR-ORIENTED

CROSSROADS

NEED FOR PLAZA

PARK AND RIDE CONNECTION

**PASS-THROUGH**

SHOPPING OPPORTUNITY

COMMERCIAL ACCESS

WAVES OF REDEVELOPMENT

GATHERING

WARMTH

AUTO-ORIENTED

**TRANSIT NEED**

WELCOMING FEEL

RESIDENTIAL

**NEIGHBORHOOD**

ROAD IMPACT ON BUSINESS

ZERO VEHICLE HOUSEHOLDS

OVERBUILT

**CREATE PLACE**

BOLD COLORS / PATTERNS

UNFINISHED

SPREAD OUT

WALK-UP

STATION

DON'T OVERDO IT

CAN'T SEE

FROM ROAD

**CLEARING**

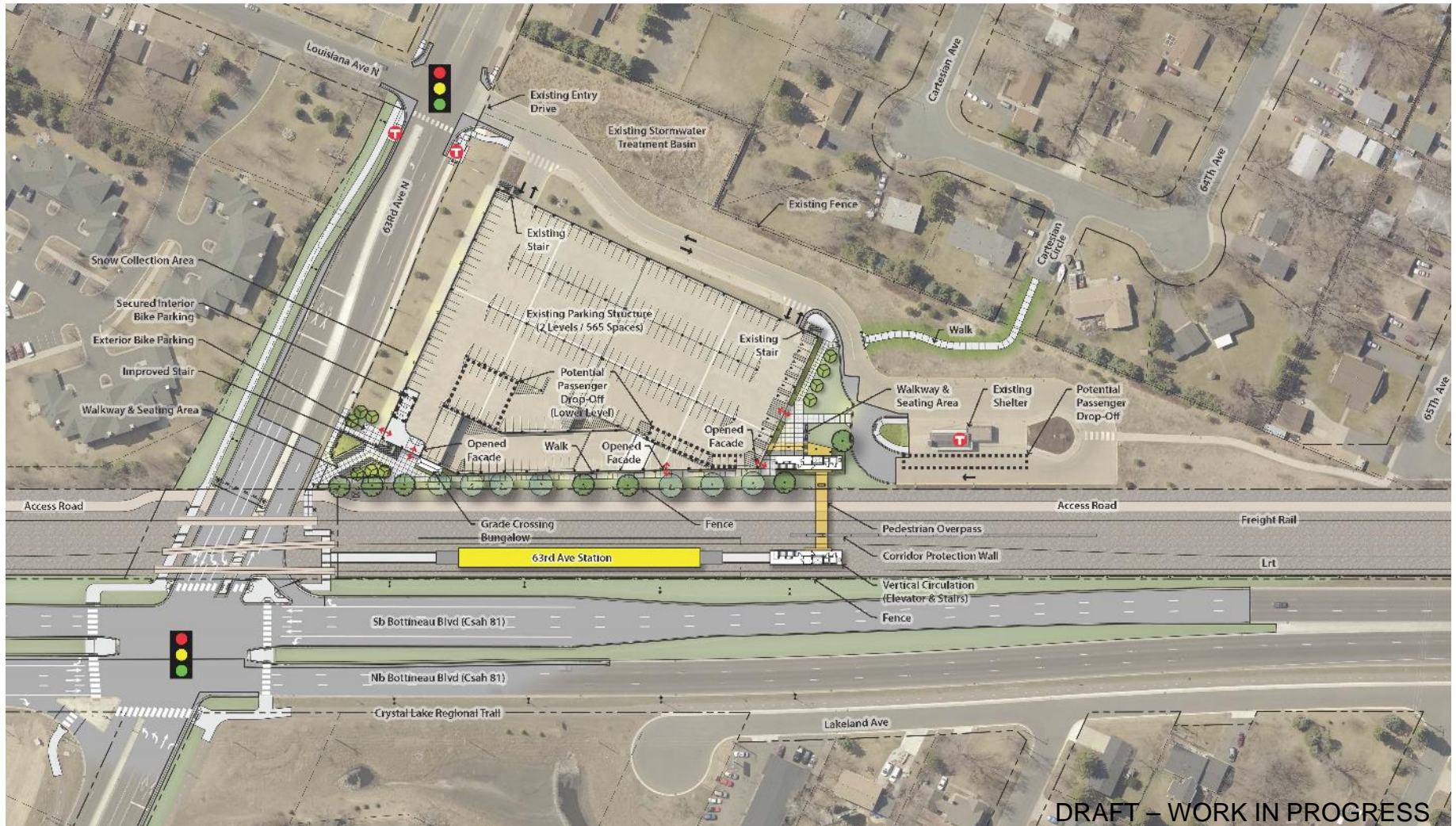
STATION DESIGN CONCEPTS

# 63<sup>rd</sup> Avenue Station Context & Character Words





# Station Plan Concept





DRAFT - WORK IN PROGRESS

## Birdseye view of 63<sup>rd</sup> Ave Station





DRAFT – WORK IN PROGRESS

## View of plaza at park and ride entry





DRAFT – WORK IN PROGRESS

# View of pedestrian overpass from LRT platform



# Brooklyn Boulevard Station



# Aerial View of Brooklyn Blvd Station Site



DRAFT-WORK IN PROCESS





**COMMERCIAL HUB**  
 DESTINATION  
 TRANSIT CONNECTIONS  
 CULTURAL  
 TREES  
 LIGHTING  
 VISIBILITY  
 INTENSIFICATION  
 BUSY  
 TIMELESS FEEL  
 PLAZA  
 PEDESTRIAN CIRCULATION  
 EXPRESSION OF COMMUNITY  
**WAYFINDING** RETAIL

ARTISTIC EXPRESSION  
**DIVERSITY**  
 AUTO-ORIENTED

SAFETY  
 CROSSROADS  
 TRANSIT DEPENDENT  
**VIBRANT**

CONTEXT & CHARACTER WORKSHOPS

**COMMERCIAL HUB**  
 DESTINATION  
 TRANSIT CONNECTIONS  
 CULTURAL  
 TREES  
 LIGHTING  
 VISIBILITY  
 INTENSIFICATION  
 BUSY  
 TIMELESS FEEL  
 PLAZA  
 PEDESTRIAN CIRCULATION  
 EXPRESSION OF COMMUNITY  
**WAYFINDING** RETAIL

ARTISTIC EXPRESSION  
**DIVERSITY**  
 AUTO-ORIENTED

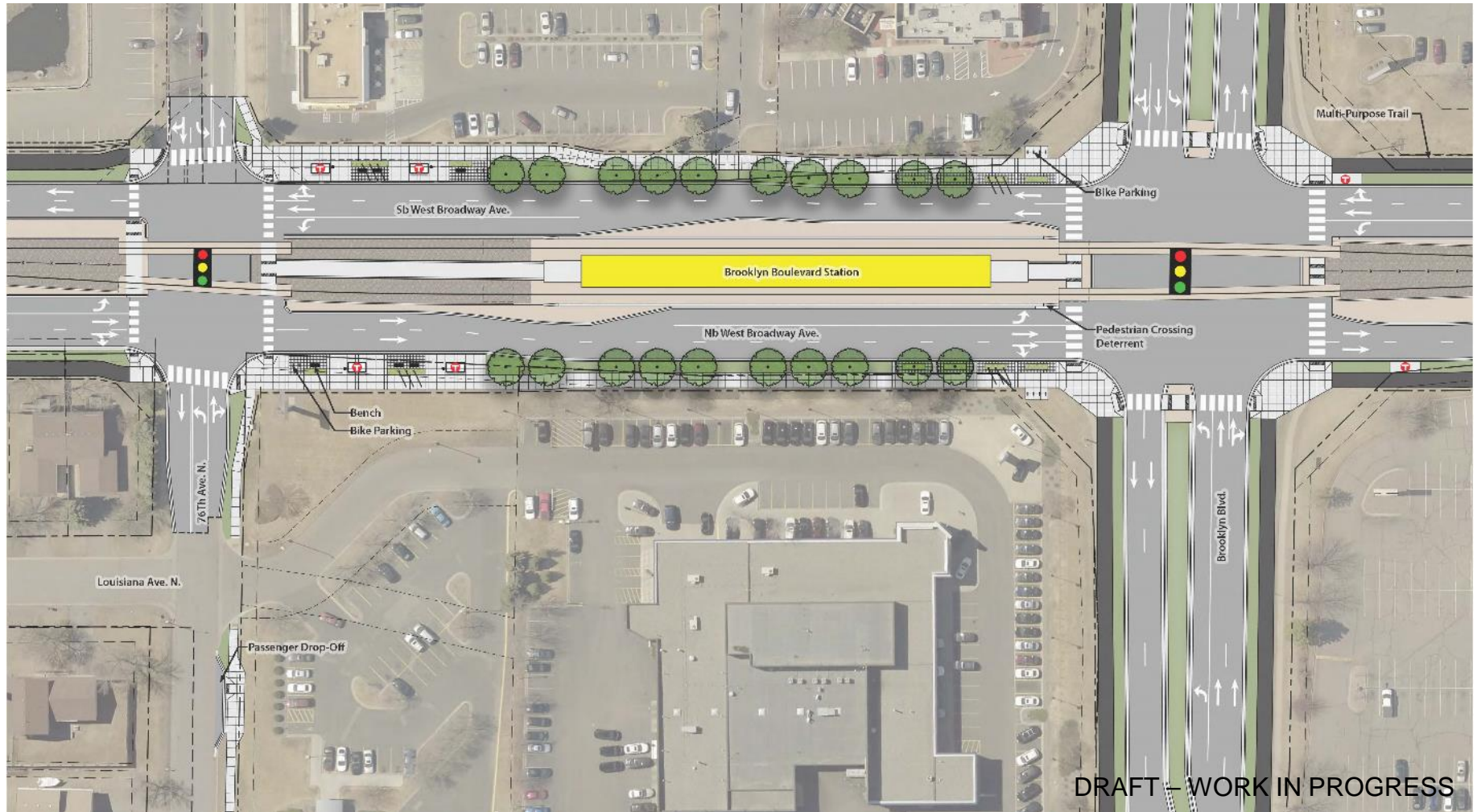
SAFETY  
 CROSSROADS  
 TRANSIT DEPENDENT  
**VIBRANT**

STATION DESIGN CONCEPTS

# Brooklyn Blvd Station Context & Character Words



# Station Plan Concept



Note: The streetscape design for West Broadway Ave. is being developed in coordination with the Visioning Team with input from the City, County, and Community. Improvements shown on the station site plan do not imply that the LRT Project will provide them. Final determination of funding sources for the streetscape features is yet to be determined.







# View from West Broadway Ave looking Northwest





DRAFT - WORK IN PROGRESS

# View from platform entry looking North



# 85<sup>th</sup> Avenue Station



# Aerial View of 85<sup>th</sup> Ave Station Site



DRAFT-WORK IN PROCESS





PRIDE FOR INSTITUTIONS

ENTRANCE TO THE FUTURE  
 CIVIC SPACE LOSS OF TREES EDGES  
**CAMPUS**  
 GENERATIONAL USE  
 CARPOOLS  
 PARKING  
 BUS STOPS  
 LIBRARY  
 LEARNING  
 MODERN DESIGN  
 PEDESTRIAN FACILITIES  
 PLAZA  
**CORRIDOR**  
 TRANSITION FROM PUBLIC TO PRIVATE  
 RESIDENTIAL UNEASINESS  
**DESTINATION**  
 ARTS AND EDUCATION  
 STUDENTS  
 STATION BLENDS WITH MODERN ARCHITECTURE

CONTEXT & CHARACTER WORKSHOPS

PRIDE FOR INSTITUTIONS

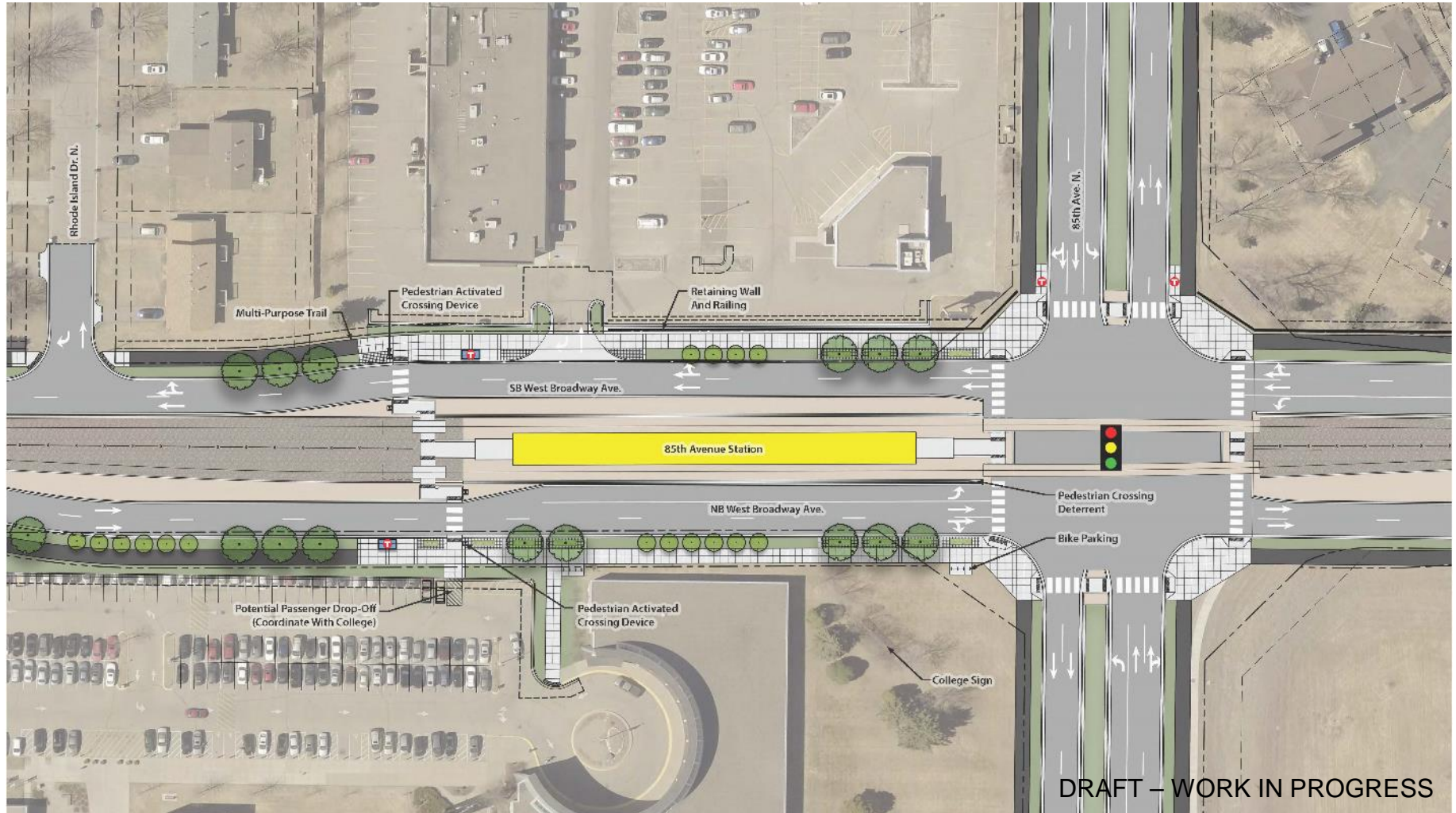
ENTRANCE TO THE FUTURE  
 CIVIC SPACE LOSS OF TREES EDGES  
**CAMPUS**  
 GENERATIONAL USE  
 CARPOOLS  
 PARKING  
 BUS STOPS  
 LIBRARY  
 LEARNING  
 MODERN DESIGN  
 PEDESTRIAN FACILITIES  
 PLAZA  
**CORRIDOR**  
 TRANSITION FROM PUBLIC TO PRIVATE  
 RESIDENTIAL UNEASINESS  
**DESTINATION**  
 ARTS AND EDUCATION  
 STUDENTS  
 STATION BLENDS WITH MODERN ARCHITECTURE

STATION DESIGN CONCEPTS

# 85<sup>th</sup> Avenue Station Context & Character Words



# Station Plan Concept



Note: The streetscape design for West Broadway Ave. is being developed in coordination with the Visioning Team with input from the City, County, and Community. Improvements shown on the station site plan do not imply that the LRT Project will provide them. Final determination of funding sources for the streetscape features is yet to be determined.





DRAFT - WORK IN PROGRESS

# View from West Broadway Ave looking Southeast





DRAFT - WORK IN PROGRESS

# View from platform entry looking North





# 93<sup>rd</sup> Avenue Station



# Aerial View of 93<sup>rd</sup> Ave Station Site



DRAFT-WORK IN PROCESS

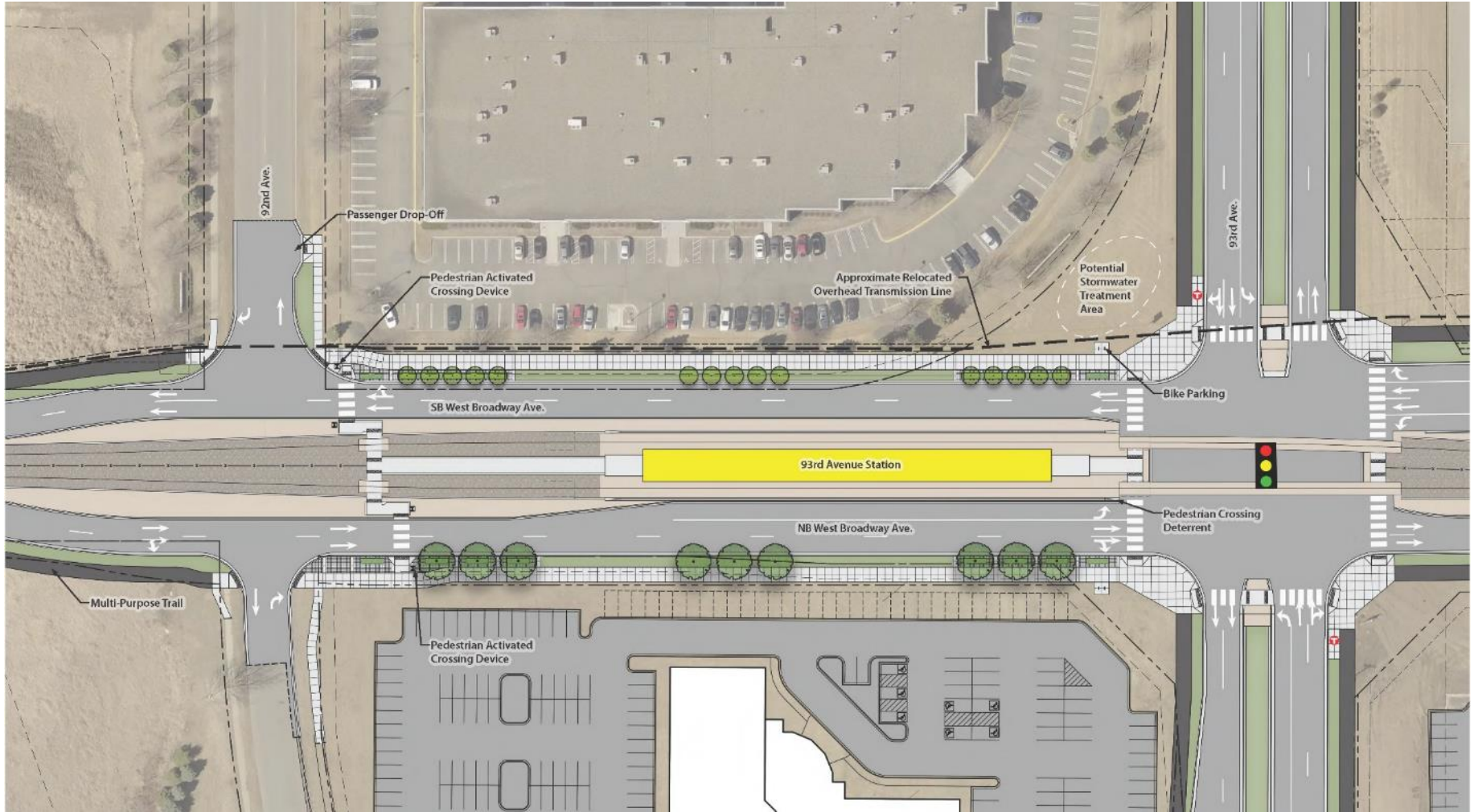




## 93<sup>rd</sup> Avenue Station Context & Character Words



# Station Plan Concept



Note: The streetscape design for West Broadway Ave. is being developed in coordination with the Visioning Team with input from the City, County, and Community. Improvements shown on the station site plan do not imply that the LRT Project will provide them. Final determination of funding sources for the streetscape features is yet to be determined.



DRAFT – WORK IN PROGRESS

# View from West Broadway Ave looking Southeast





DRAFT – WORK IN PROGRESS

# View from platform entry looking North



# Oak Grove Parkway Station



# Aerial View of Oak Grove Pkwy Station Site



DRAFT-WORK IN PROCESS







**CONTEXT & CHARACTER WORKSHOPS**

DEVELOPMENT  
PARK LIKE  
SIGNATURE AREA  
WAYFINDING  
WARM  
STATION TO REPRESENT CULTURE  
URBAN  
CITY CENTER  
PEOPLE CENTERED  
GREEN  
COMMUNITY HISTORY  
GRAND BOULEVARD  
ENTRANCE POINT  
FIELD  
INVITING  
MODERN  
SPECIAL EVENTS AREA  
EDUCATIONAL  
COMMUNITY HISTORY  
GRAND BOULEVARD  
NATIONAL EXAMPLE OF TOD  
COMMUTER ACTIVE  
MIXED USE DOWNTOWN  
CENTER FOCUSED  
CLEAR CONNECTIONS  
"HUBURB"  
HARD TO IMAGINE URBAN FUTURE  
ENERGY  
BEGINNING OF THE LINE

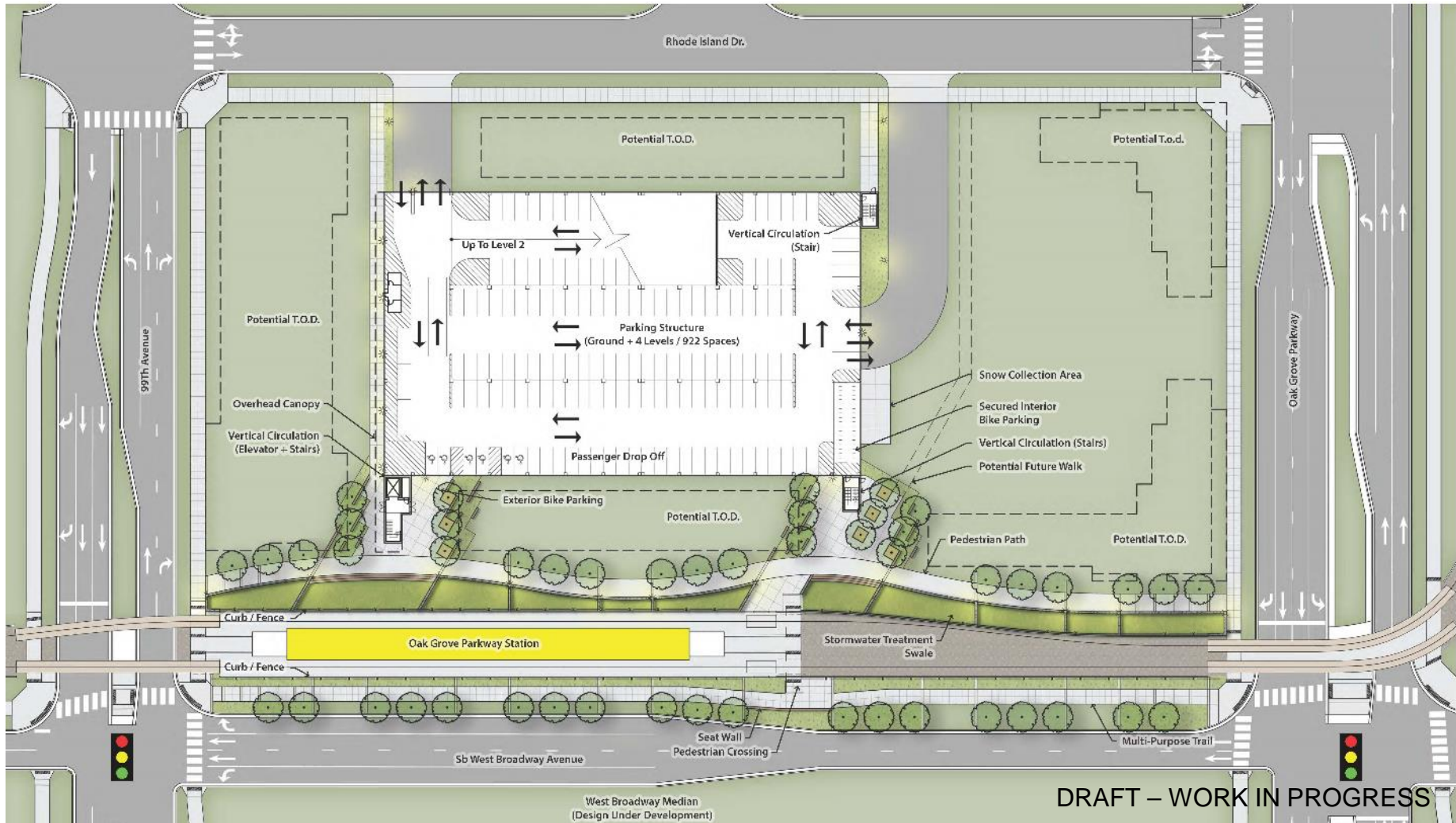
**STATION DESIGN CONCEPTS**

DEVELOPMENT  
PARK LIKE  
SIGNATURE AREA  
WAYFINDING  
WARM  
STATION TO REPRESENT CULTURE  
URBAN  
CITY CENTER  
PEOPLE CENTERED  
GREEN  
COMMUNITY HISTORY  
GRAND BOULEVARD  
ENTRANCE POINT  
FIELD  
INVITING  
MODERN  
SPECIAL EVENTS AREA  
EDUCATIONAL  
COMMUNITY HISTORY  
GRAND BOULEVARD  
NATIONAL EXAMPLE OF TOD  
COMMUTER ACTIVE  
MIXED USE DOWNTOWN  
CENTER FOCUSED  
CLEAR CONNECTIONS  
"HUBURB"  
HARD TO IMAGINE URBAN FUTURE  
ENERGY  
BEGINNING OF THE LINE

# Oak Grove Pkwy Station Context & Character Words



# Station Plan Concept



Note: The streetscape design for West Broadway Ave. is being developed in coordination with the Visioning Team with input from the City, County, and Community. Improvements shown on the station site plan do not imply that the LRT Project will provide them. Final determination of funding sources for the streetscape features is yet to be determined.





DRAFT – WORK IN PROGRESS

# Birdseye view of Oak Grove Pkwy Station





DRAFT - WORK IN PROGRESS

## View from sidewalk to LRT platform & ramp





DRAFT – WORK IN PROGRESS

# View from ramp to LRT platform with TOD



# Station Design: Stay Involved!

- Receive input from project partners, Community and Business Advisory Committees and Corridor Management Committees
- Share station design concepts at Community Open Houses:
  - Nov 9 – 17
- Presentation materials, station design boards and comment form posted on project website: [BlueLineExt.org](http://BlueLineExt.org)

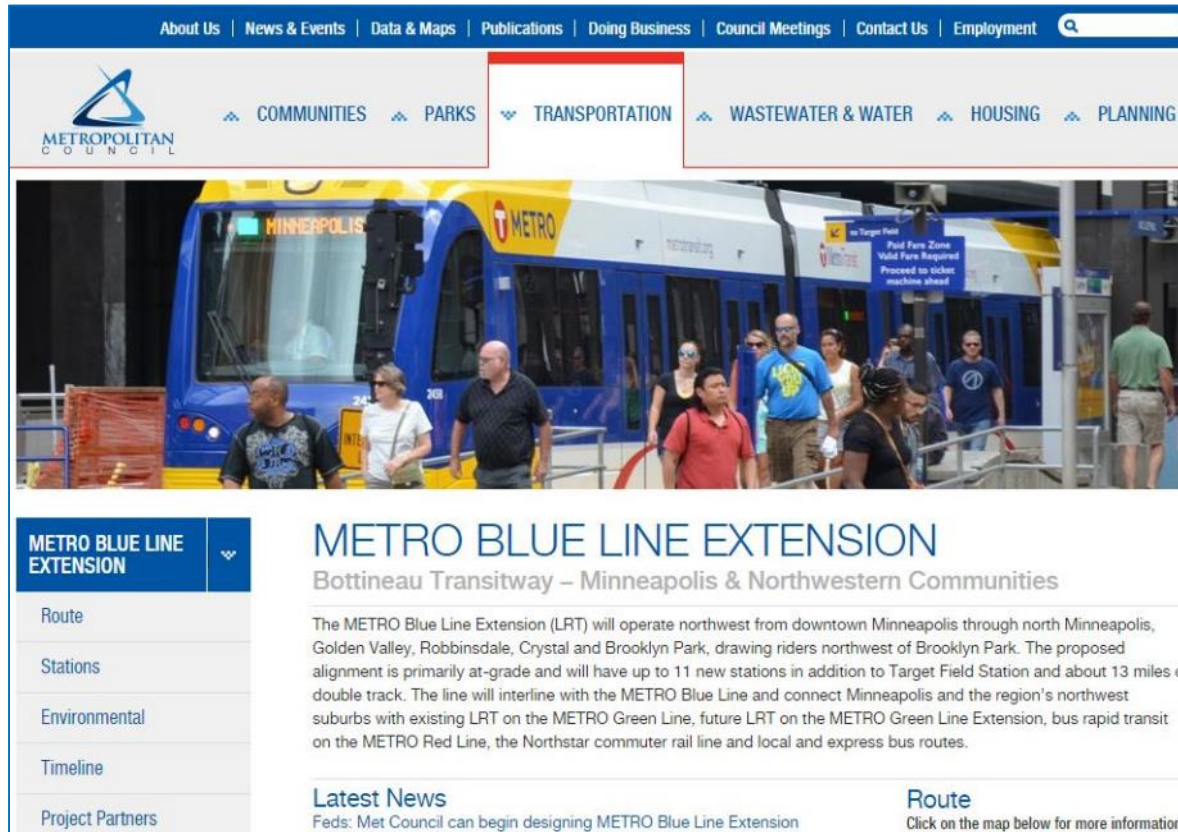


# Next Steps

- Oct - Nov: Receive community/project partner input on 30% station design concepts
- Dec - Jan: Review input received
- Feb: Finalize 60% station design
- Spring/Summer: Community updates



# More Information



The screenshot shows the Metropolitan Council website with the 'TRANSPORTATION' menu item highlighted. Below the navigation is a large photograph of a blue and yellow METRO Blue Line train at a station platform with passengers. The main content area features a sidebar with a dropdown menu for 'METRO BLUE LINE EXTENSION' containing links for Route, Stations, Environmental, Timeline, and Project Partners. The main text area is titled 'METRO BLUE LINE EXTENSION' and 'Bottineau Transitway – Minneapolis & Northwestern Communities'. It contains a paragraph describing the project: 'The METRO Blue Line Extension (LRT) will operate northwest from downtown Minneapolis through north Minneapolis, Golden Valley, Robbinsdale, Crystal and Brooklyn Park, drawing riders northwest of Brooklyn Park. The proposed alignment is primarily at-grade and will have up to 11 new stations in addition to Target Field Station and about 13 miles of double track. The line will interline with the METRO Blue Line and connect Minneapolis and the region's northwest suburbs with existing LRT on the METRO Green Line, future LRT on the METRO Green Line Extension, bus rapid transit on the METRO Red Line, the Northstar commuter rail line and local and express bus routes.' Below this text are two sections: 'Latest News' with a link to 'Feds: Met Council can begin designing METRO Blue Line Extension' and 'Route' with a link to 'Click on the map below for more information'.

Website: [BlueLineExt.org](http://BlueLineExt.org)

Email: [BlueLineExt@metrotransit.org](mailto:BlueLineExt@metrotransit.org)

Twitter: [@BlueLineExt](https://twitter.com/BlueLineExt)

