



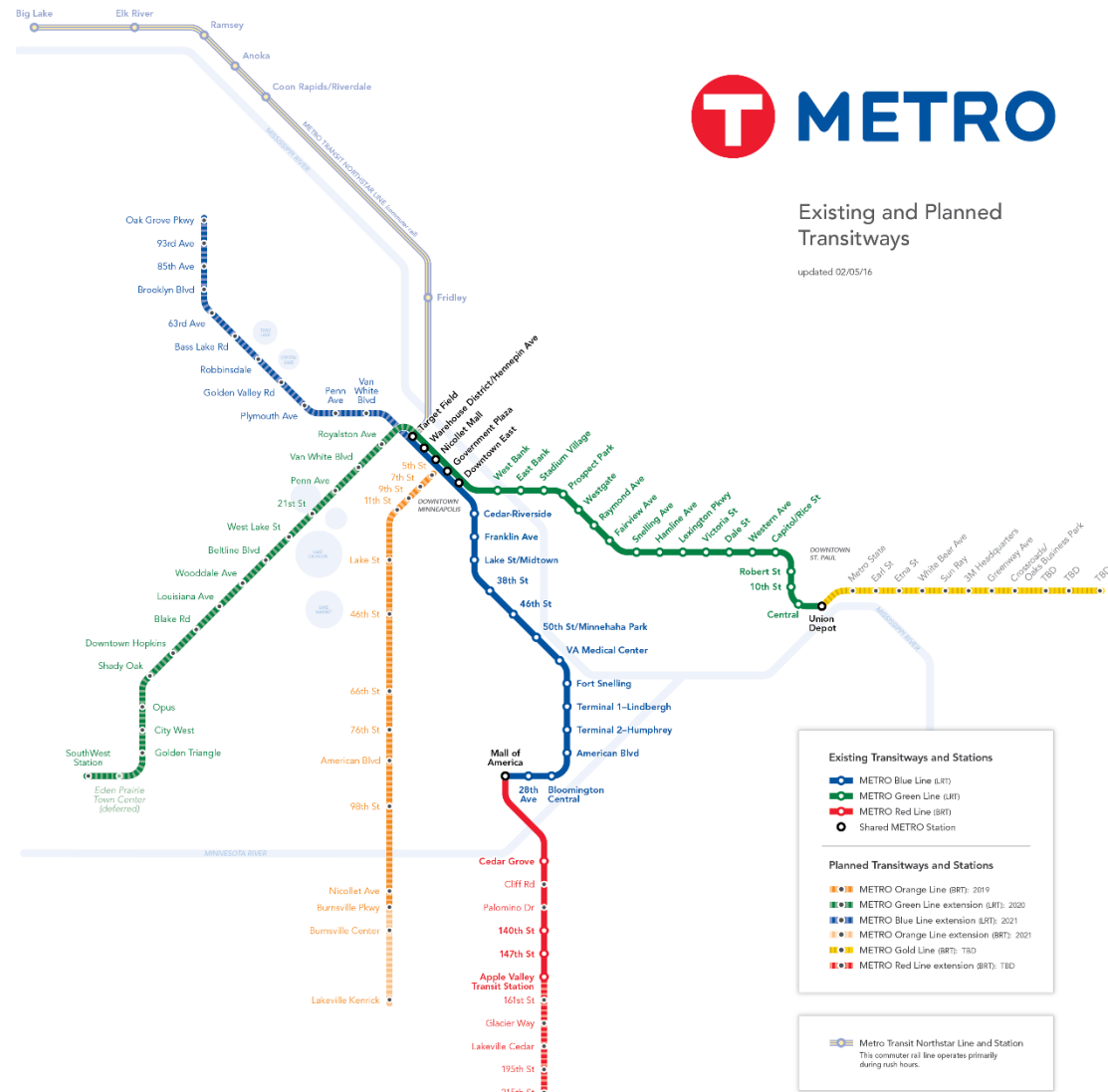
# Municipal Consent Plans

February 16, 2016



# METRO System: All-Day, Frequent Service

- Light Rail Transit
  - Blue Line (2004)
  - Green Line (2014)
  - Green Line Extension (2020)
  - Blue Line Extension (2021)
- Bus Rapid Transit
  - Red Line (2013)
  - Orange Line (2019)
  - Gold Line (TBD)

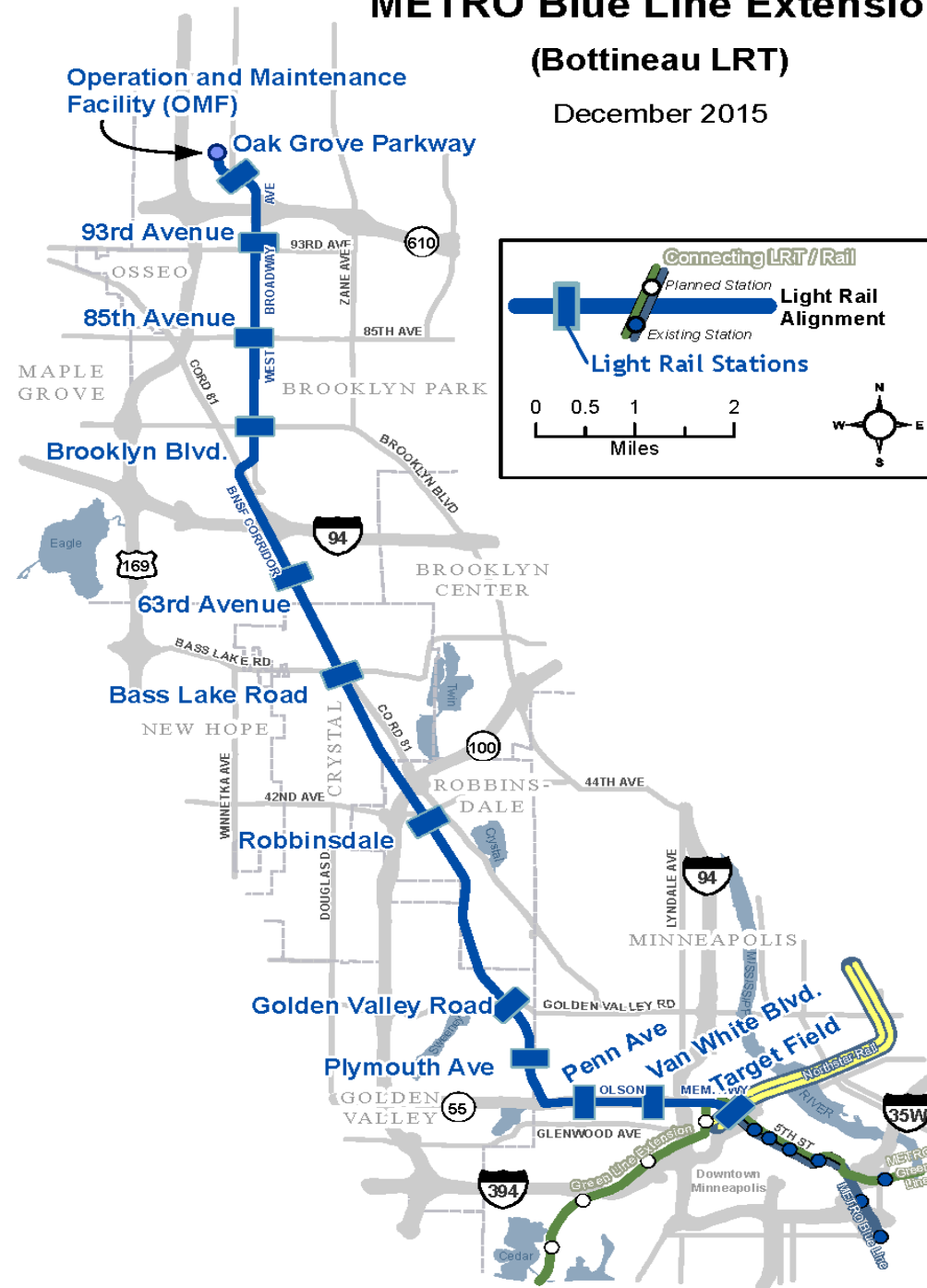


# Project Overview

- 11 new LRT stations
- 13.5 miles of double track
- 27,000 est. rides by 2040
- Serving Brooklyn Park, Crystal, Robbinsdale, Golden Valley & Minneapolis
- One seat ride from Brooklyn Park to Bloomington
- New Starts Status: Project Development

## METRO Blue Line Extension (Bottineau LRT)

December 2015



# Municipal Consent Process

- Minnesota Statute 473.3994
- Local jurisdictional review and approval of physical design component of preliminary design plans



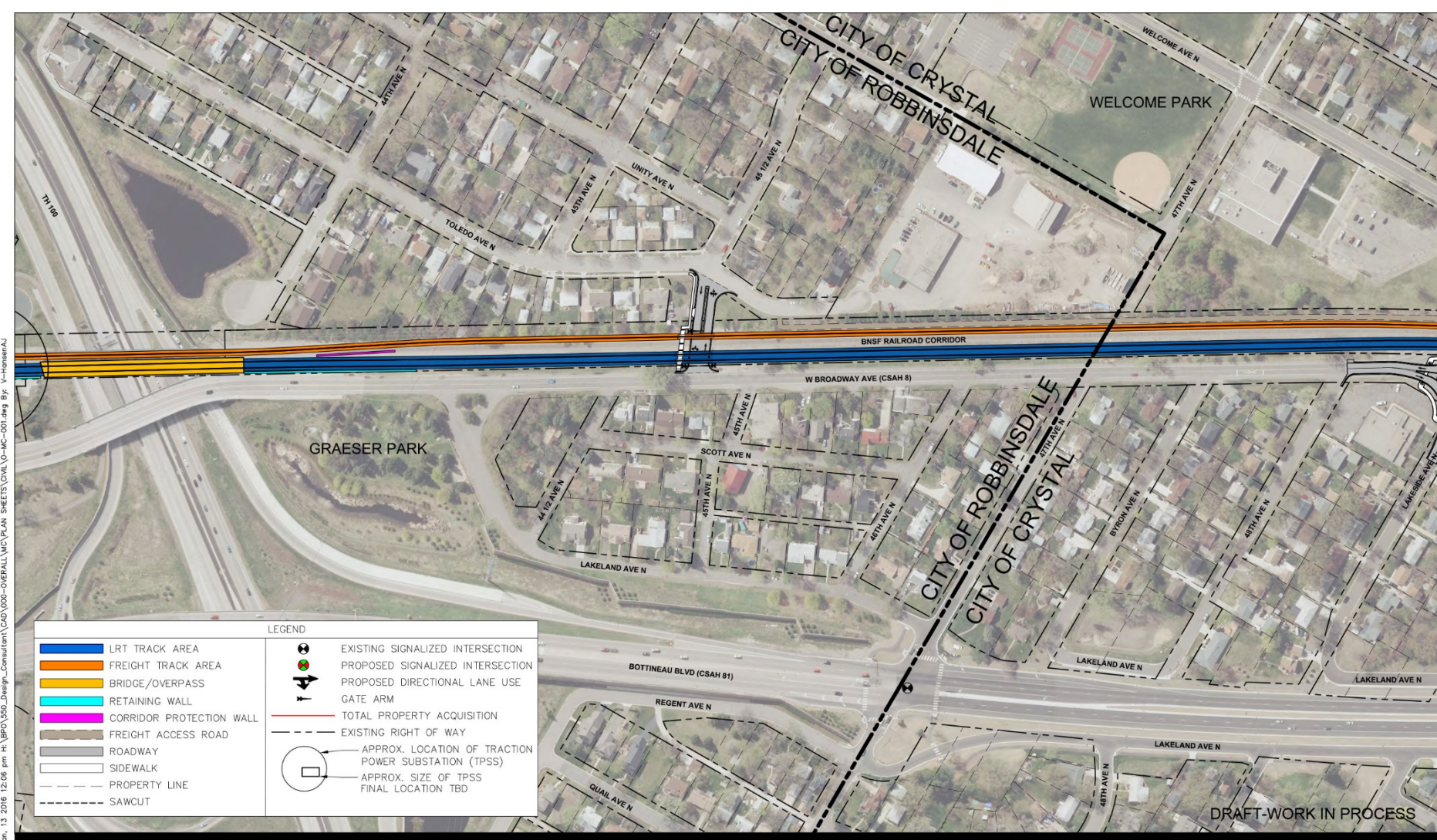


# Physical Design Components

- LRT track location
- Station location and layout
- Roadway features
  - Turn lanes
  - Lane widths
  - Traffic signals
- Sidewalks
- Pedestrian crossings
- Freight track location



Jan. 13 2016 12:06 pm H:\BPO\550\_Design\_Consultant\CAD\000-OVERALL\MC\PLAN\_SHEETS\DWG\0-MC-001.dwg By: V-Hansen



Kimley»Horn

## BLUE LINE LRT EXTENSION

CITY OF ROBBINSDALE / CITY OF CRYSTAL  
MUNICIPAL CONSENT LAYOUT

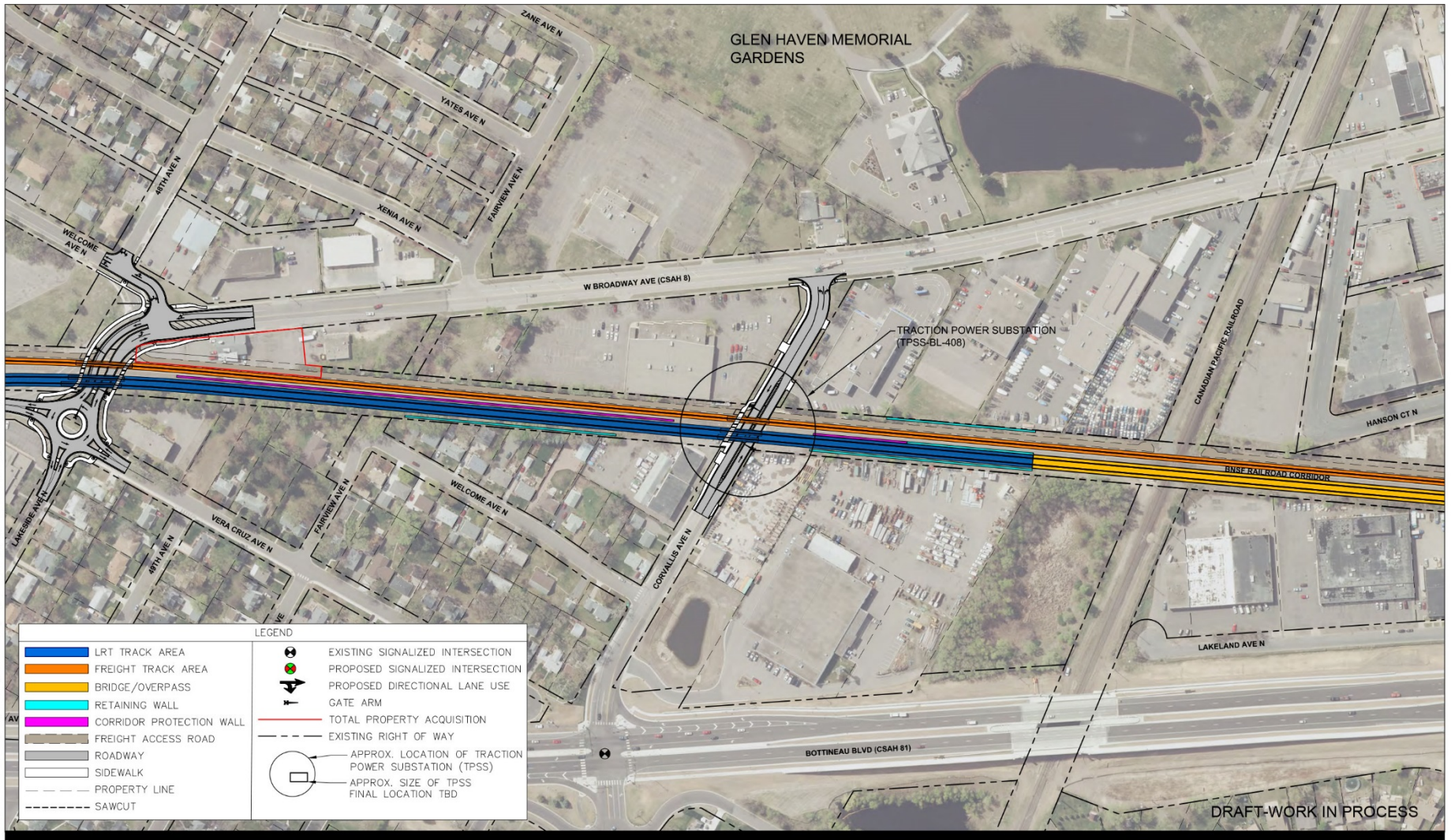


11





Jun, 13 2016 12:07 pm H:\BPO\550\_Design\_Consultant\CD\000-OVERALL\WC\PLAN SHEETS\CIVIL\0-MC-001.dwg By: V-HouseAU



**Kimley»Horn**

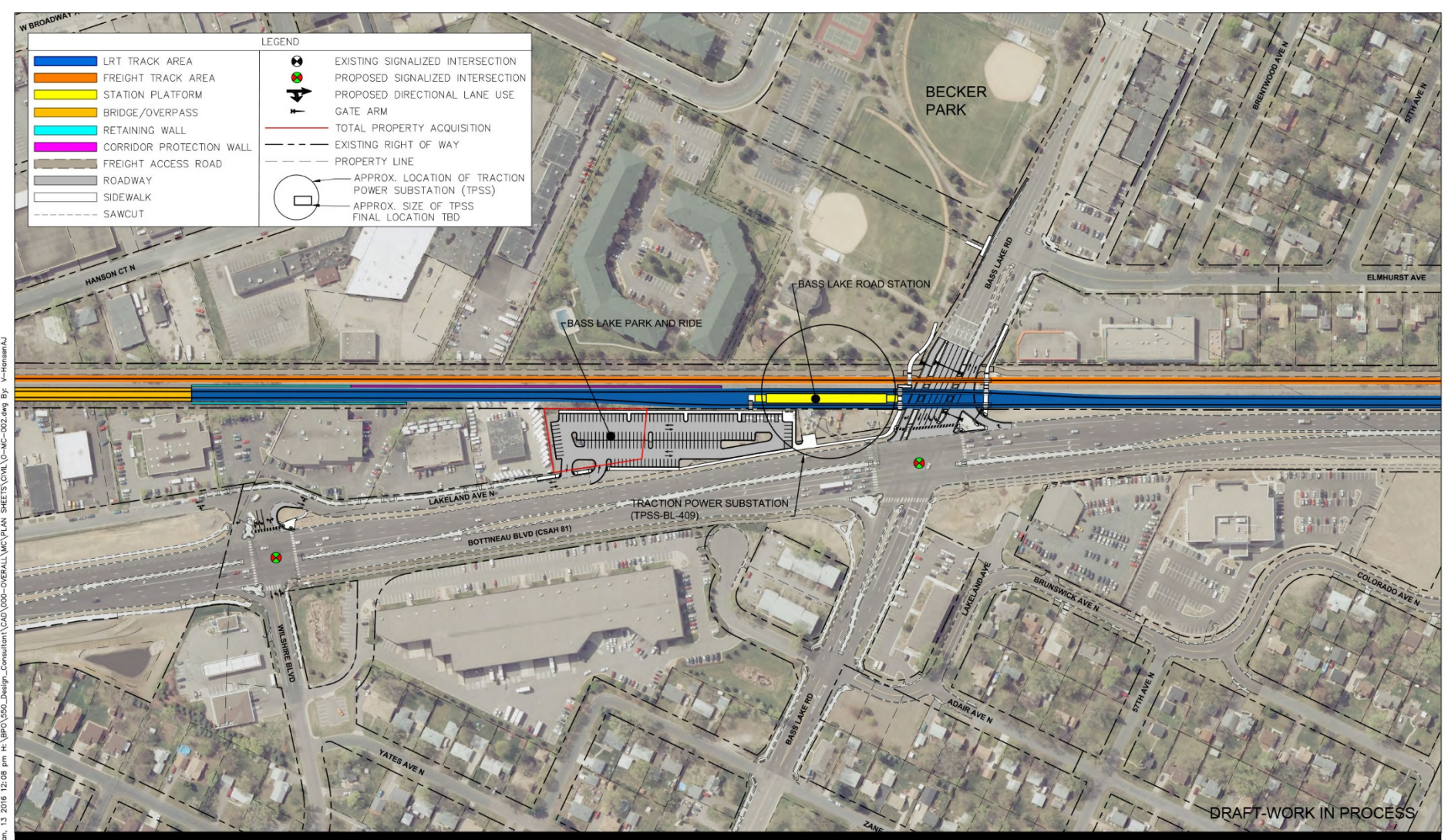
# **BLUE LINE LRT EXTENSION** CITY OF CRYSTAL MUNICIPAL CONSENT LAYOUT



12



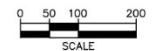




**Kimley»Horn**

# BLUE LINE LRT EXTENSION

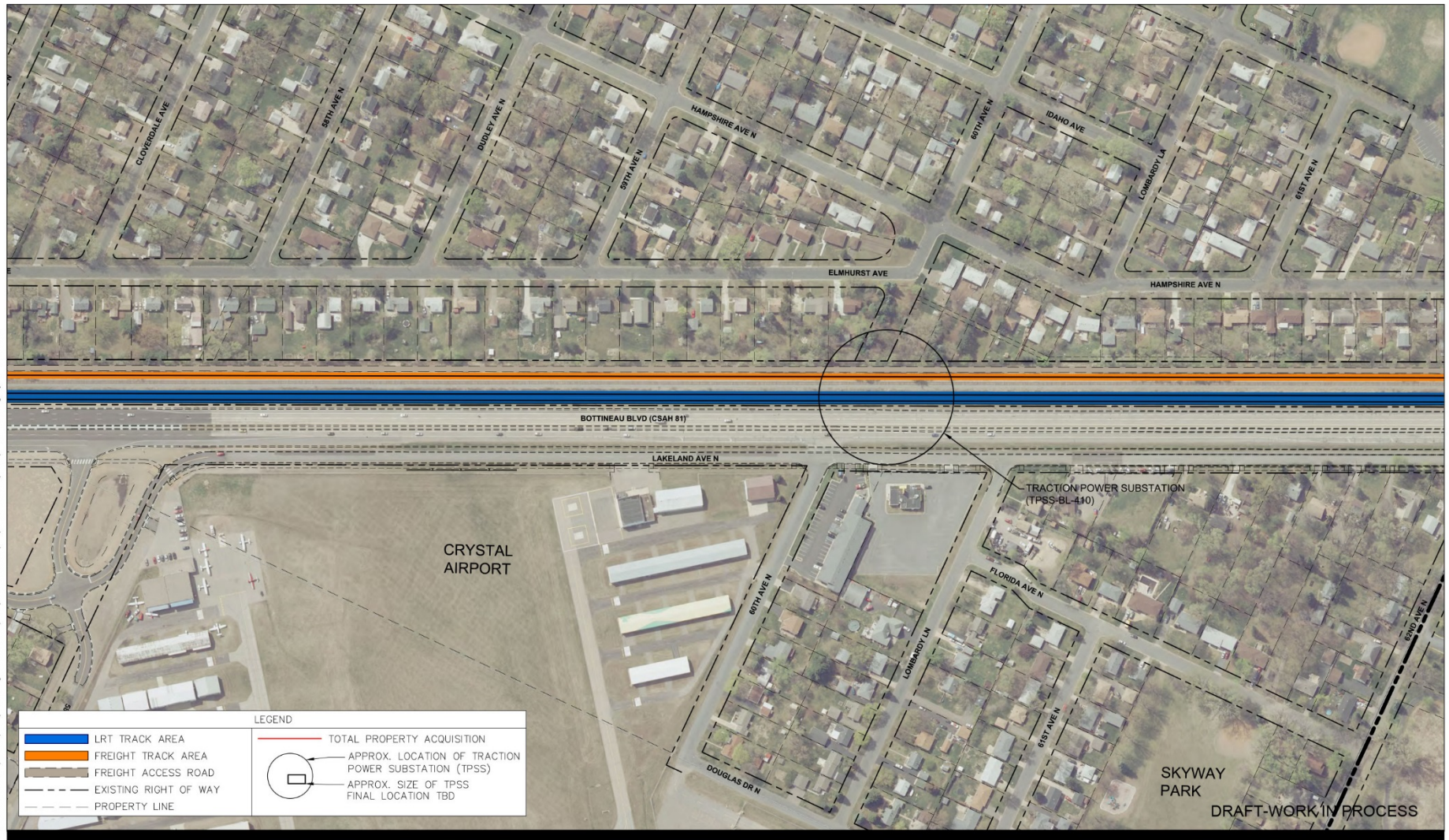
CITY OF CRYSTAL  
MUNICIPAL CONSENT LAYOUT



13







**Kimley»Horn**

## BLUE LINE LRT EXTENSION

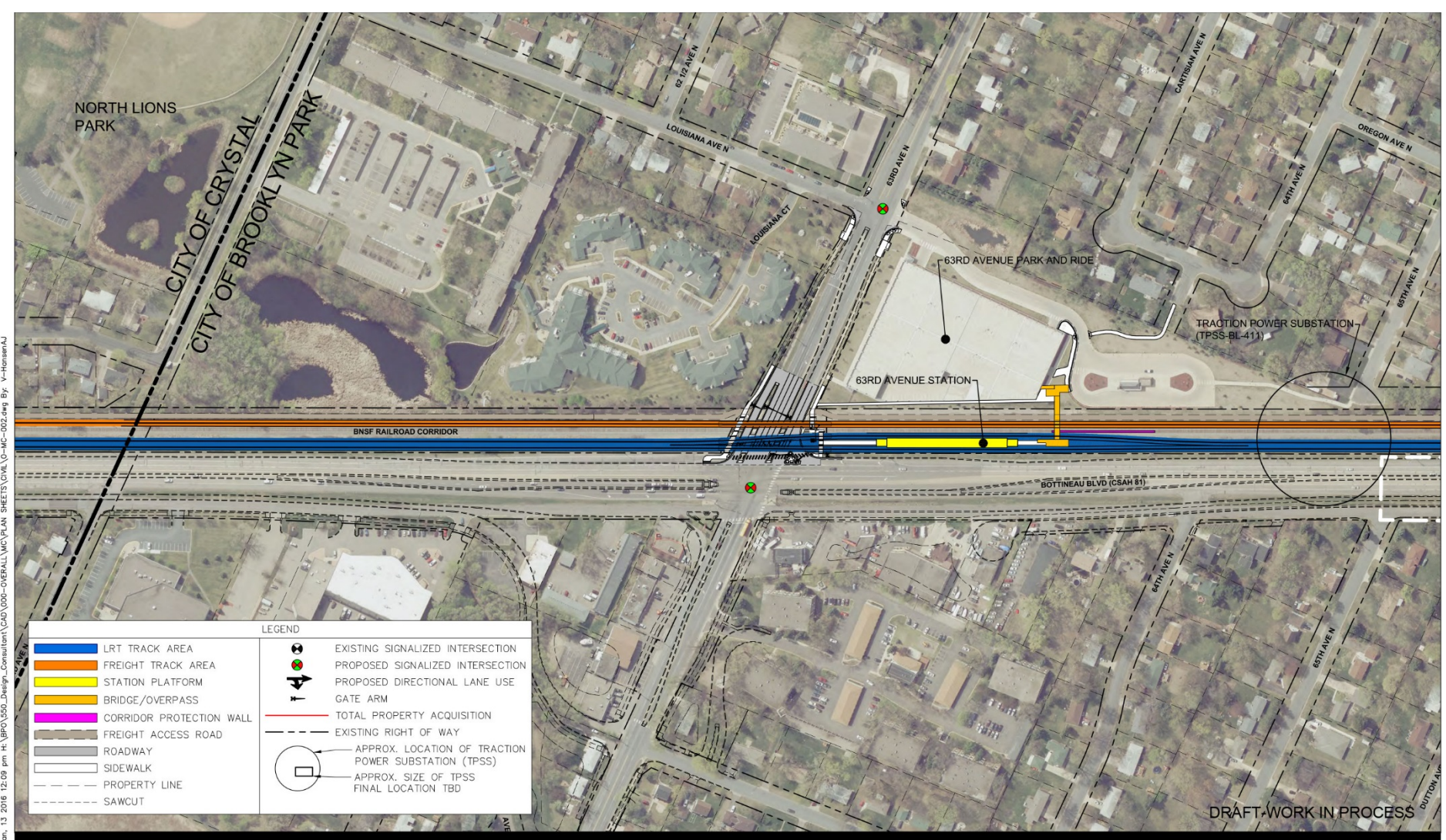
CITY OF CRYSTAL  
MUNICIPAL CONSENT LAYOUT



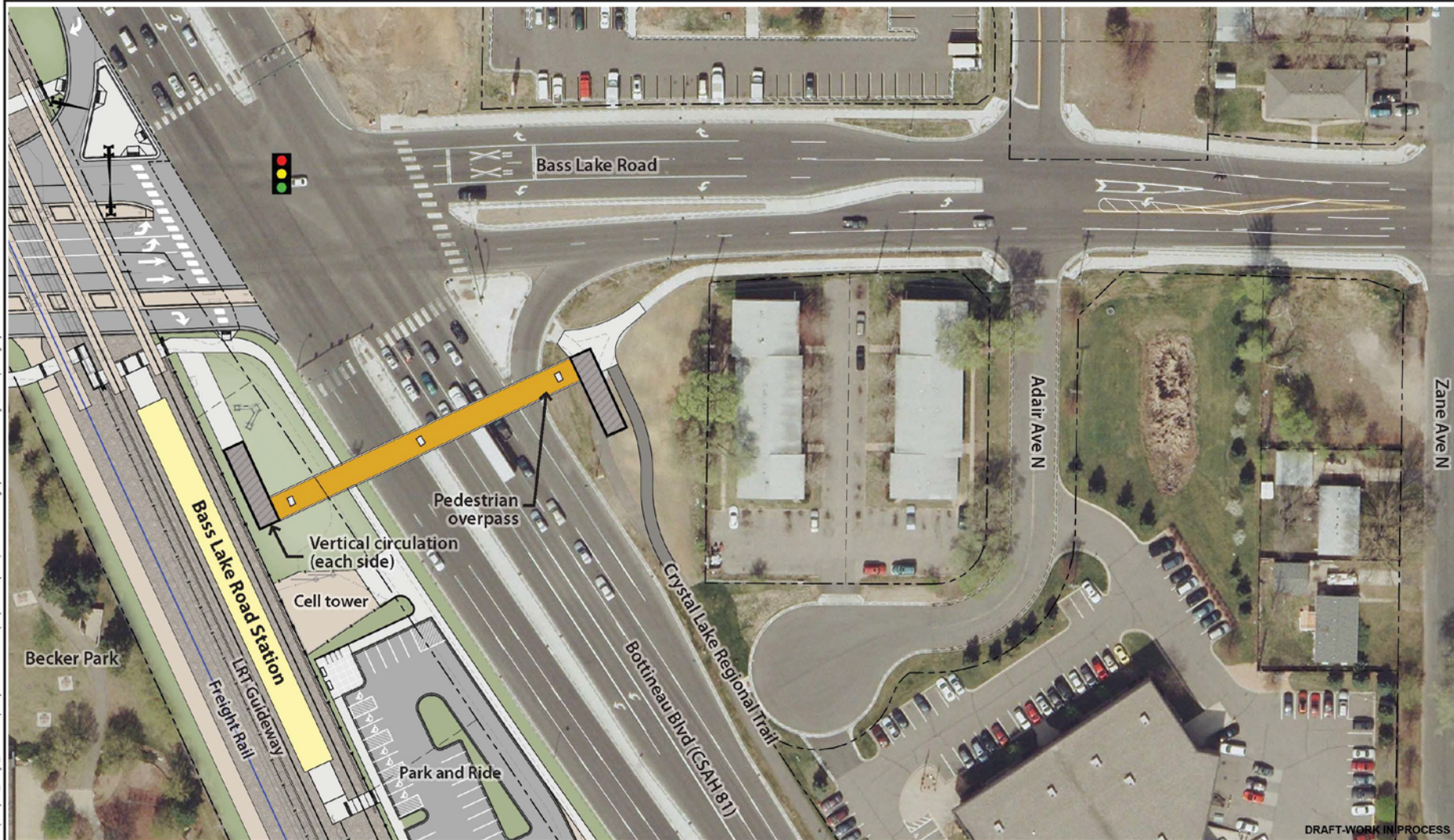
14





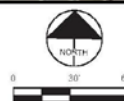






BLUE LINE LRT EXTENSION

E

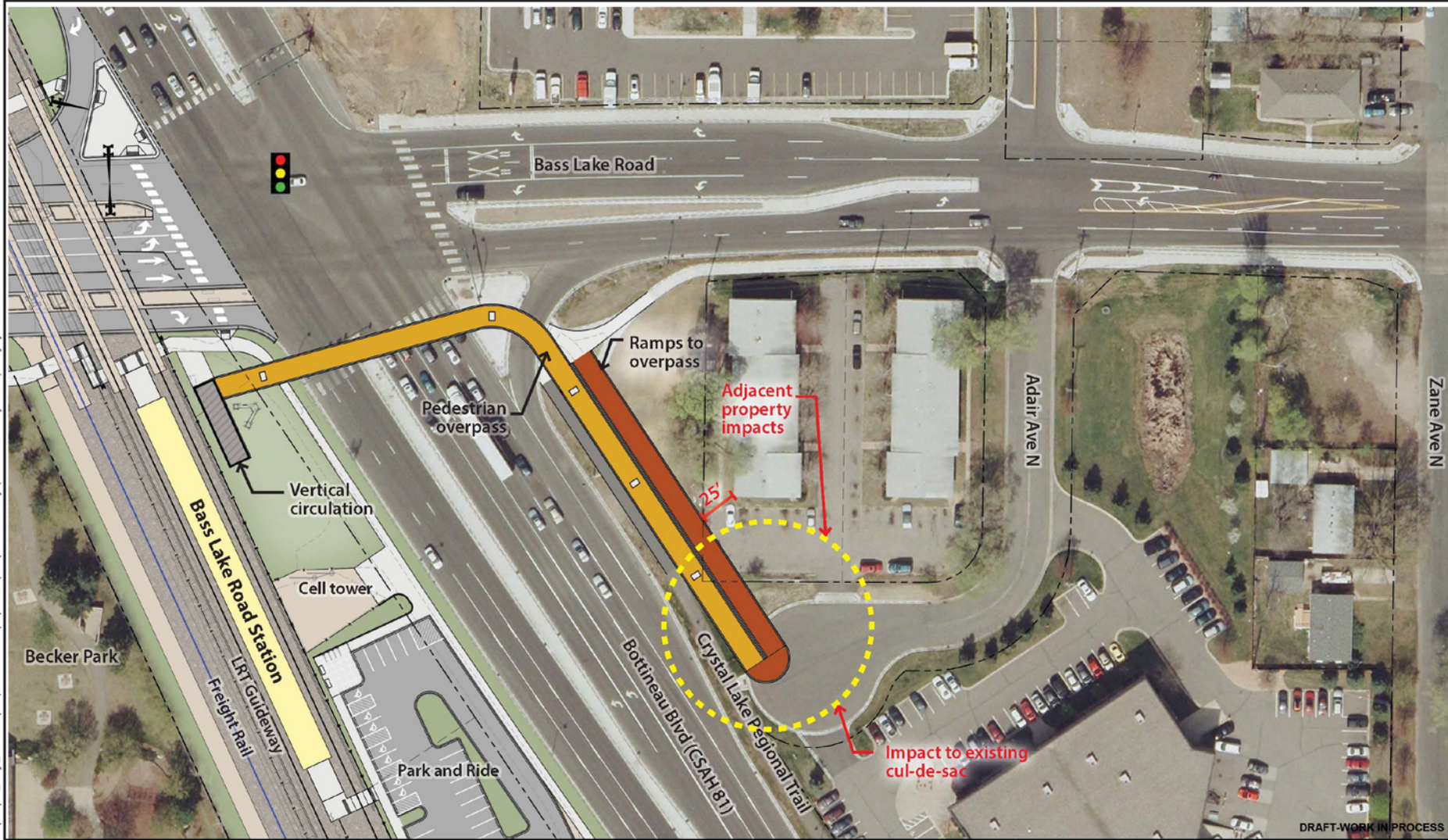


Kimley»Horn





H:\BPO\9601\_Design\_Construction\CAD\03-SEGMENT-C\VE\XCHG\T\CVL\BassLakePedBridge-ALL-Opt.dwg By: V-Horton



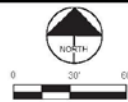
DRAFT-WORK IN PROCESS



**BLUE LINE LRT EXTENSION**  
CITY OF CRYSTAL  
PEDESTRIAN OVERPASS AT BASS LAKE ROAD  
SWITCHBACK OPTION 2

I

Rev 0  
01/25/2016



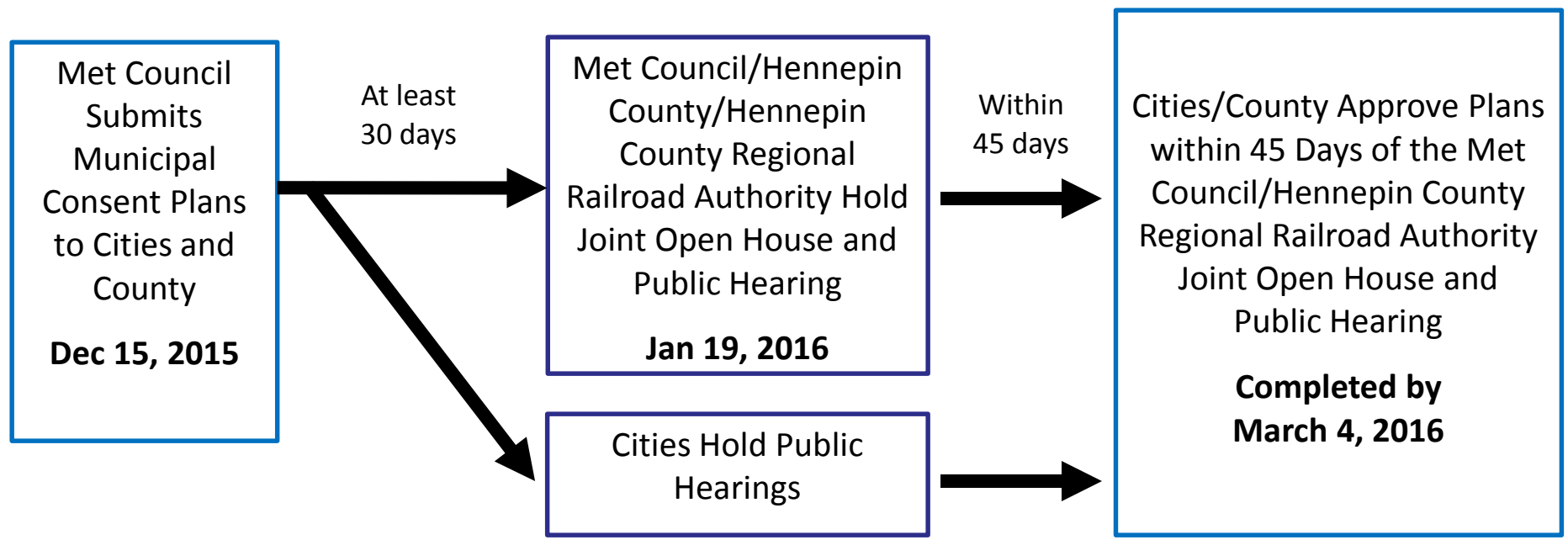
Kimley»Horn

**SRH** miller dunwiddie  
Consulting Group, Inc.





# Municipal Consent Schedule



# Next Steps

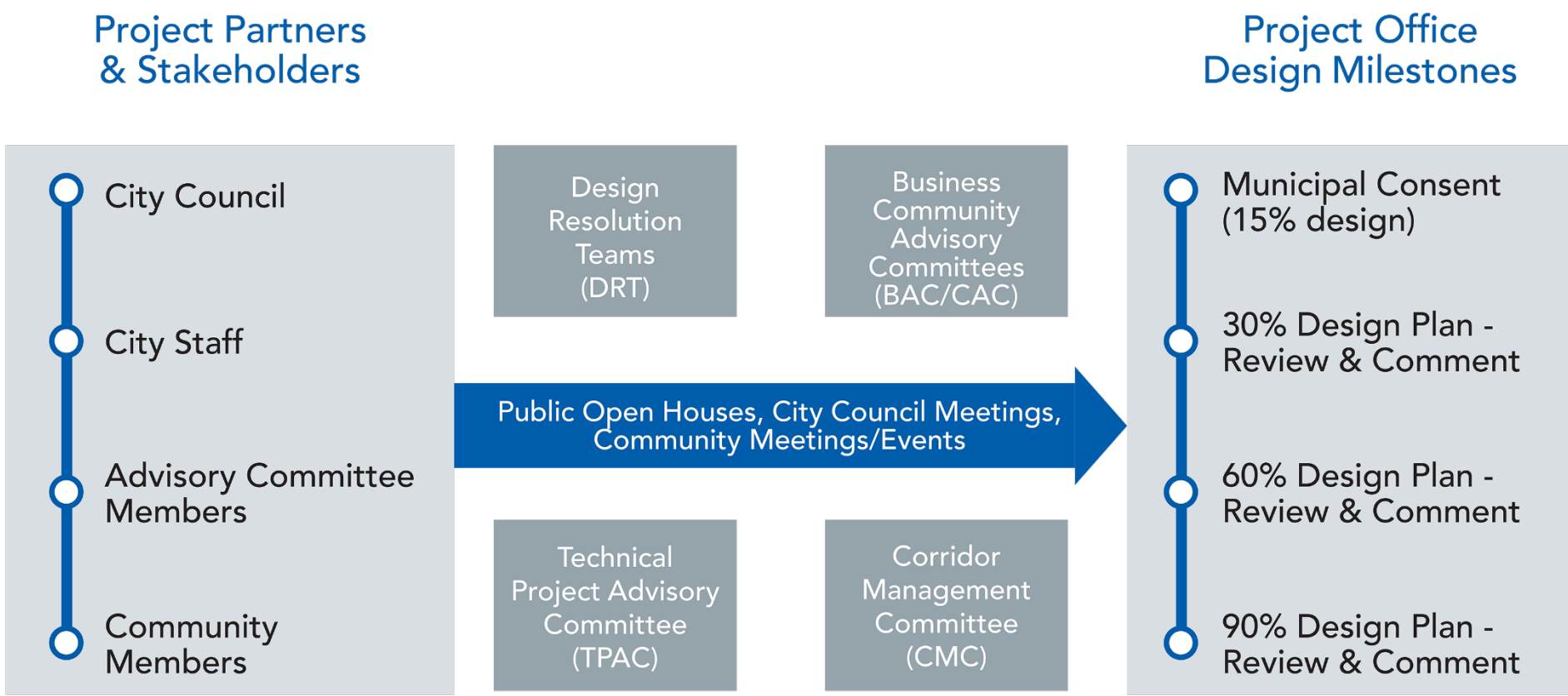


# Next Steps After Municipal Consent

- Station design
- Streetscape design
- Utility relocation design
- Design advancement:
  - LRT track features
  - Roadway details
  - OMF features
  - Bridges and tunnels
  - System elements
  - Freight rail features





# Continued Design Coordination



# More Information

[About Us](#) | [News & Events](#) | [Data & Maps](#) | [Publications](#) | [Doing Business](#) | [Council Meetings](#) | [Contact Us](#) | [Employment](#)

 [COMMUNITIES](#) [PARKS](#) [TRANSPORTATION](#) [WASTEWATER & WATER](#) [HOUSING](#) [PLANNING](#)



**METRO BLUE LINE EXTENSION**

[Route](#)

[Stations](#)

[Environmental](#)

[Timeline](#)

[Project Partners](#)

## METRO BLUE LINE EXTENSION

### Bottineau Transitway – Minneapolis & Northwestern Communities

The METRO Blue Line Extension (LRT) will operate northwest from downtown Minneapolis through north Minneapolis, Golden Valley, Robbinsdale, Crystal and Brooklyn Park, drawing riders northwest of Brooklyn Park. The proposed alignment is primarily at-grade and will have up to 11 new stations in addition to Target Field Station and about 13 miles of double track. The line will interline with the METRO Blue Line and connect Minneapolis and the region's northwest suburbs with existing LRT on the METRO Green Line, future LRT on the METRO Green Line Extension, bus rapid transit on the METRO Red Line, the Northstar commuter rail line and local and express bus routes.

**Latest News**

Feds: Met Council can begin designing METRO Blue Line Extension

**Route**

[Click on the map below for more information](#)

Website: [BlueLineExt.org](http://BlueLineExt.org)

Email: [BlueLineExt@metrotransit.org](mailto:BlueLineExt@metrotransit.org)

Twitter: [@BlueLineExt](https://twitter.com/BlueLineExt)

