

SOUTHWEST

Green Line LRT Extension



Construction Contractor Open House

December 5, 2016



EDEN PRAIRIE | MINNETONKA | EDINA | HOPKINS | ST. LOUIS PARK | MINNEAPOLIS

Today's Topics

- Welcome
- Project Overview
- Construction Activities Overview
 - Outreach and Communications
- DBE and Workforce Goals
- Met Council Bidding Process Overview



Welcome
Metropolitan Council
Chair Adam Duininck

METRO System: All-Day, Frequent Service

Light Rail Transit

- Blue Line (2004)
- Green Line (2014)
- Green Line Extension (2021)
- Blue Line Extension (2021)

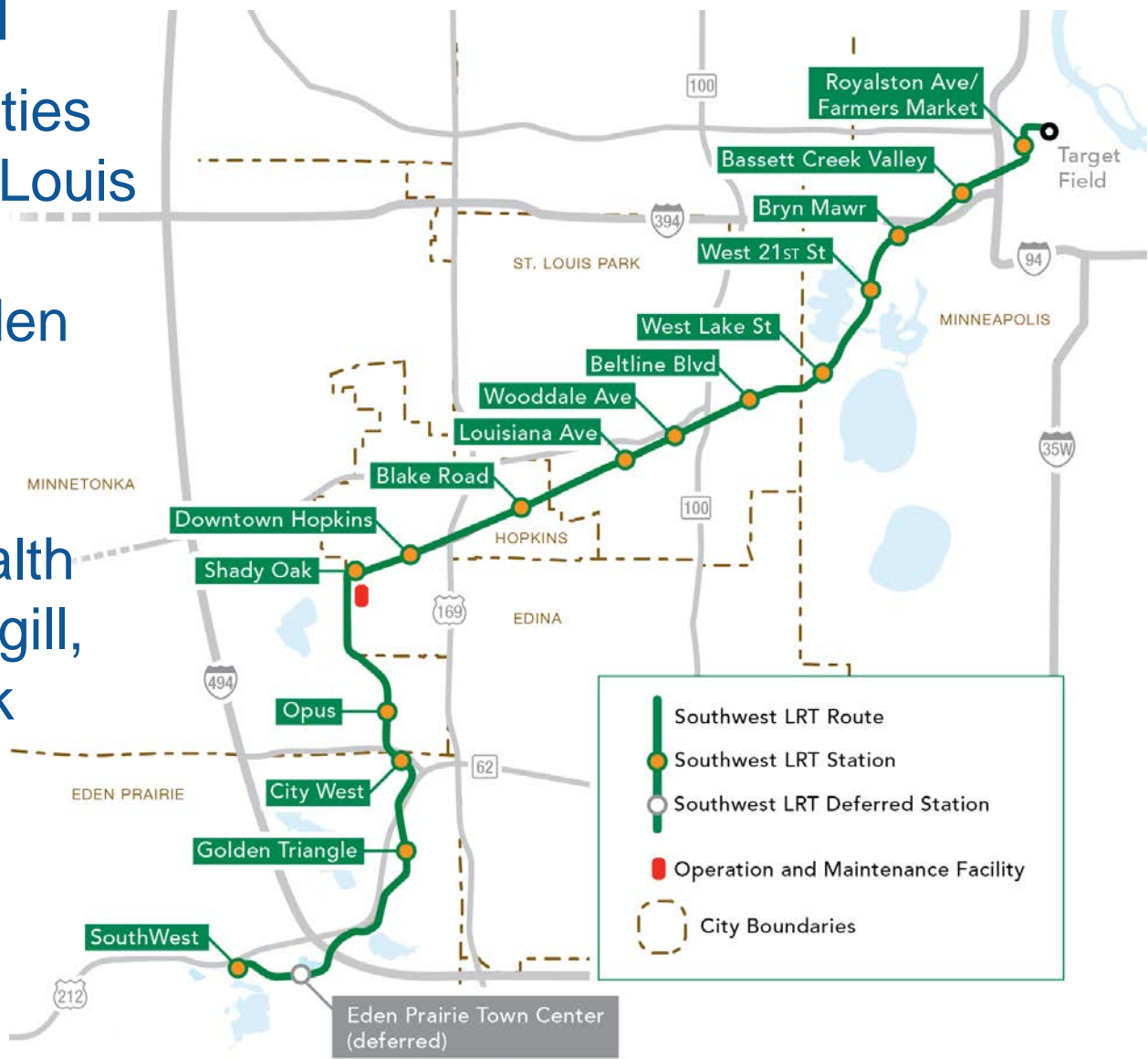
Bus Rapid Transit

- Red Line (2013)
- Orange Line (2019)
- Gold Line (TBD)



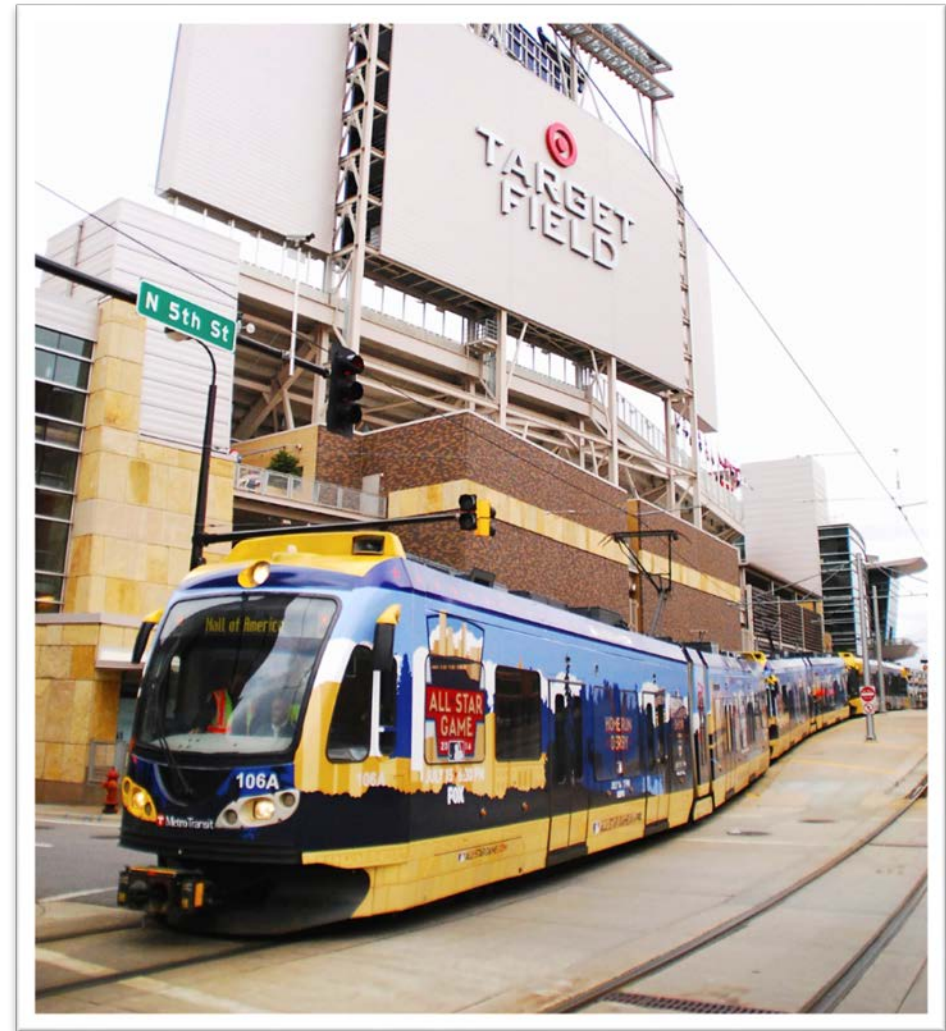
Southwest LRT

- Connects communities of Minneapolis, St. Louis Park, Hopkins, Minnetonka and Eden Prairie
- Home to UnitedHealth Group, Optum, Cargill, Supervalu and Park Nicollet Methodist Hospital



Southwest LRT: Green Line Extension

- 34,000 average weekday rides in 2040
- Will provide single seat rides to downtown Minneapolis, U of M and St. Paul
- Connections to the Airport and Mall of America via the Blue Line



Timeline

2013

- Project Development

2014

- Municipal Consent

2014-15

- Engineering, SDEIS

2016

- Final EIS

2017

- Full Funding Grant Agreement

2017-19

- Heavy Construction

2021

- Passenger Operations

Project and Construction Overview

Jim Alexander

Types of Work

- Civil Contract
 - Track
 - Bridges and retaining walls
 - Tunnels
 - Stations
 - Electrical
 - Roadway, curb, gutter, sidewalks
 - Traffic signals, striping and signage
 - Public utilities
 - Underground systems elements
- Systems
 - Train signal systems
 - Communications
 - Traction power/electrical
- OMF
 - Building: shop, admin and train storage areas
 - Site work
 - Track
 - Mechanical, electrical, plumbing

5 Main Contracts

Contract	Procurement Method	Timing
Light Rail Vehicles	Authorized/Limited Notice to Proceed	Q4 2016
Civil	Design/Bid/Build	Q1 2017
Systems	Design/Bid/Build	Q2 2017
Operations & Maintenance Facility	Design/Bid/Build	Q2 2017
Fare Collection	Request for Proposals	Q3 2019

Civil Contract Scope

- 15 Stations
 - Vertical circulation
 - West Lake St
 - Bryn Mawr
 - Bassett Creek Valley



Civil Contract Scope

- Park-and-rides
 - 7 Surface lots with a total of 1,747 spaces
 - 1 Ramp at SouthWest Station with 2 elevators



Civil Contract Scope

- 44 structures
 - 29 new bridges (LRT, Pedestrian, Roadway, Freight)
 - 7 existing bridges with modifications
 - 6 pedestrian tunnels
 - 2 cut and cover tunnels (TH62 582 ft., Kenilworth 2,236 ft)
- 15 at-grade crossings
- 110 retaining walls
- Track (153,440 TF)

Civil Contract Scope

- Demolition of 14 existing buildings
- Soil improvements
- Roadways and trails
- Systemwide cable trough/ductbank/foundations
- Utilities and drainage
- Urban design and landscaping
- Freight (BNSF, TCWR and CP)

Systems Contract



Systems Contract Scope

- Systems site work
- Traction power substations (TPSS)
 - 19 TPSS on main line
 - 2 at the OMF
- 3 Tunnel systems houses
 - 2 for Kenilworth tunnel
 - 1 for TH 62 tunnel
- Overhead contact system
- LRT and freight signaling systems
- Tunnel facilities systems
 - Tunnel power
 - Ventilation
- Communications systems
 - Supervisory Control and Data Acquisition (SCADA)
 - Rail Control Center (RCC)
 - Radio
 - Public Announcement/Variable Message Signs
 - Intrusion detection
 - Close Circuit TV (CCTV)
 - Emergency call boxes
 - Telephones
 - Building Management Systems
- SWLRT systems integration

Traction Power Substation



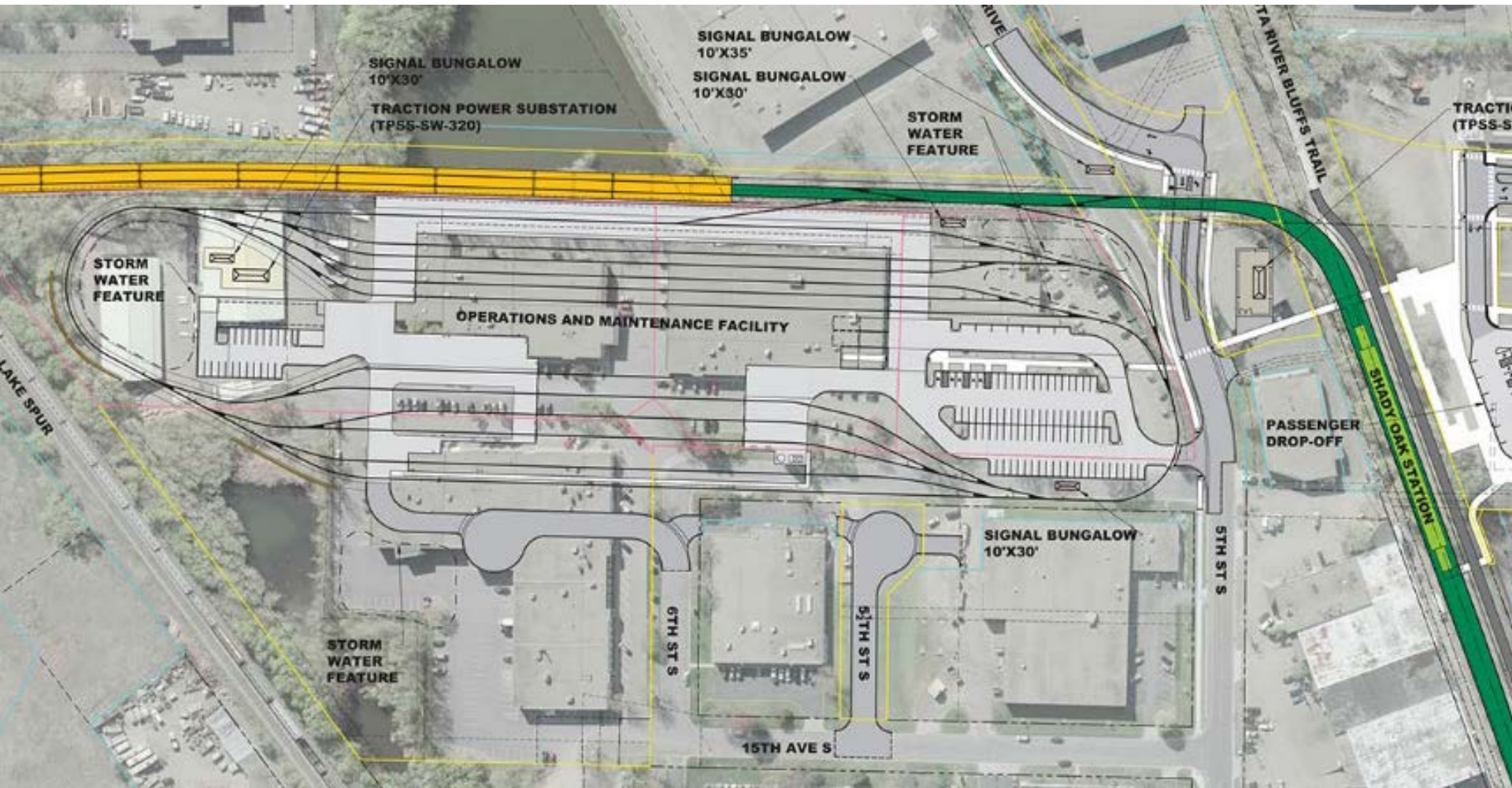
Operations and Maintenance Facility Contract



OMF Contract Scope

- Demolition of 6 existing buildings
- Soil improvements
- Yard track
- OMF building (2 story, 162,356 s.f.)
- Access roads
- Systemwide electrical cable trough/ductbank/foundations
- Utilities and drainage
- Urban design and landscaping

Operations and Maintenance Facility



Operations and Maintenance Facility



Light Rail Vehicles Contract



Light Rail Vehicles Scope

- Type III LRVs
 - Base order: 27
 - Options: Up to 50
- Limited Notice to Proceed: December 2016

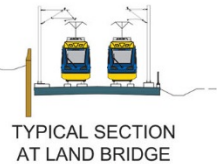
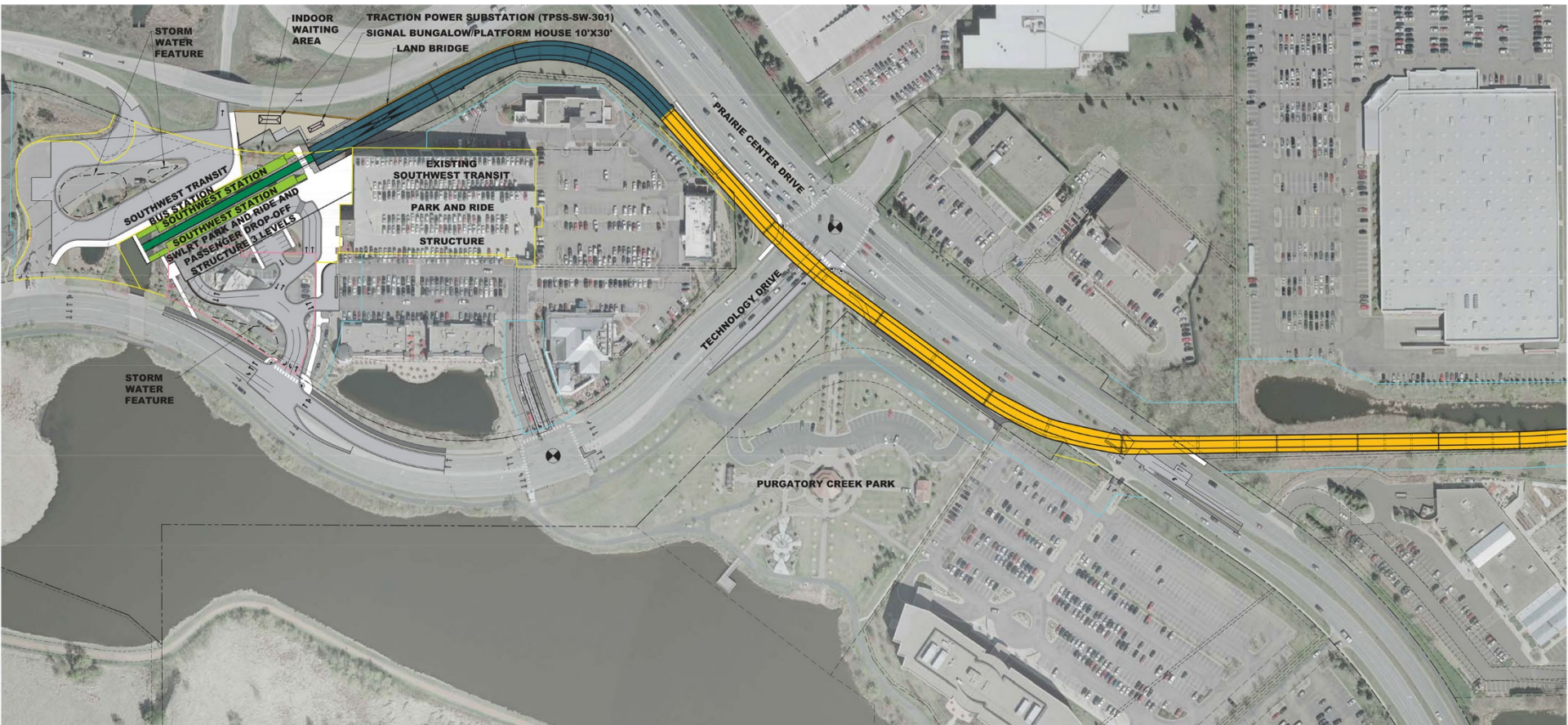
Fare Collection Contract



Fare Collection Scope

- Ticket Vending Machines (TVM): 52
- Smart Card Validators: 76
- Conduit provided for 30 future TVMs in Civil contract

SWLRT Alignment

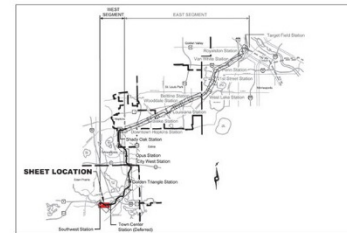


SOUTHWEST LRT ALIGNMENT

SEGMENT W1 - EDEN PRAIRIE

SOUTHWEST STATION

COLOR LEGEND			
	LRT TRACK AREA		EXISTING SIGNALIZED INTERSECTION
	PEDESTRIAN / SIDEWALK AREA		PROPOSED SIGNALIZED INTERSECTION
	STATION PLATFORM		TRACTION POWER SUBSTATION
	TUNNEL		SYSTEMS BUILDING (DESIGN VARIES)
	ROADWAY		GATE ARM
	TRAIL / BIKEWAY		TOTAL PROPERTY ACQUISITION
	SURFACE PARKING		PARTIAL PROPERTY ACQUISITION
	BRIDGE		RIGHT OF WAY
	RETAINING WALL		PROPERTY LINE
			TEMPORARY CONSTRUCTION EASEMENT



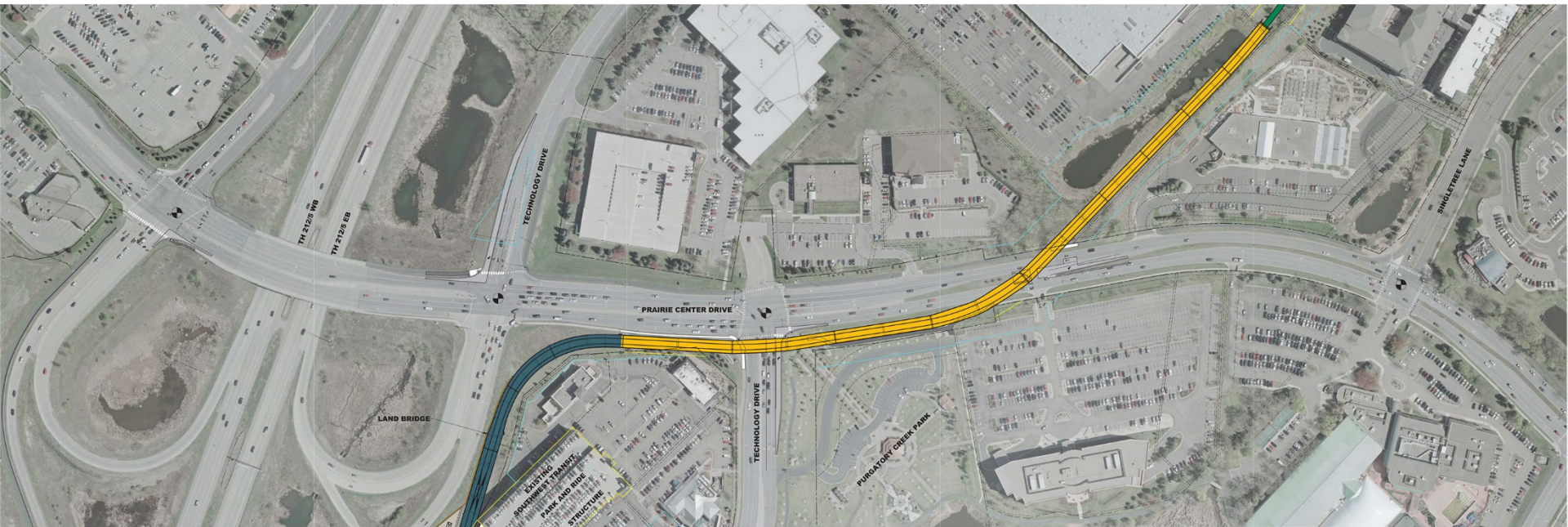
JANUARY 2016



0 25 50 100
SCALE HORIZONTAL FEET

1





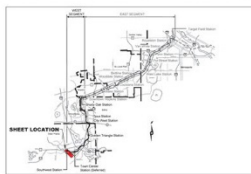
TYPICAL SECTION AT LAND BRIDGE



TYPICAL SECTION AT BRIDGE

SOUTHWEST LRT ALIGNMENT SEGMENT W1 - EDEN PRAIRIE PRAIRIE CENTER DRIVE

COLOR LEGEND	
	LRT TRACK AREA
	PEDESTRIAN / BIKEWAY AREA
	STATION PLATFORM
	LAND
	ROADWAY
	TRAIL / BIKEWAY
	SURFACE PARKING
	BRIDGE
	RETAINING WALL
	EXISTING SIGNALIZED INTERSECTION
	PROPOSED SIGNALIZED INTERSECTION
	TRACTION POWER SUBSTATION
	SYSTEMS BUILDING (DESIGN MARKED)
	GATE ARM
	TOTAL PROPERTY ACQUISITION
	PARTIAL PROPERTY ACQUISITION
	RIGHT OF WAY
	PROPERTY LINE
	TEMPORARY CONSTRUCTION EASEMENT



JANUARY 2016



2





PLATFORM HOUSE
10' X 30'

TRACTION POWER SUBSTATION
(TPSS-BW-302)

ACCESS ROAD

TOWN CENTER STATION
(DEFERRED)

LAKE IDLEWILD

TECHNOLOGY DRIVE

STORM WATER
FEATURE

STORM WATER
FEATURE

EDEN ROAD

STORM WATER
FEATURE

STORM WATER
FEATURE

STORM WATER
FEATURE

STORM WATER
FEATURE

STORM WATER
FEATURE

STORM WATER
FEATURE

STORM WATER
FEATURE

STORM WATER
FEATURE

STORM WATER
FEATURE

STORM WATER
FEATURE

STORM WATER
FEATURE

STORM WATER
FEATURE

STORM WATER
FEATURE

STORM WATER
FEATURE

STORM WATER
FEATURE

STORM WATER
FEATURE

STORM WATER
FEATURE

STORM WATER
FEATURE

STORM WATER
FEATURE

STORM WATER
FEATURE

SINGLETREE LANE

EDEN ROAD

GLEN LANE

FLYING CLOUD DRIVE

STORM WATER
FEATURE

STORM WATER
FEATURE

STORM WATER
FEATURE

STORM WATER
FEATURE

STORM WATER
FEATURE

STORM WATER
FEATURE

STORM WATER
FEATURE

STORM WATER
FEATURE

STORM WATER
FEATURE

STORM WATER
FEATURE

STORM WATER
FEATURE

STORM WATER
FEATURE

STORM WATER
FEATURE

STORM WATER
FEATURE

STORM WATER
FEATURE

STORM WATER
FEATURE

STORM WATER
FEATURE

STORM WATER
FEATURE

STORM WATER
FEATURE

STORM WATER
FEATURE



TYPICAL SECTION AT GRADE



TYPICAL SECTION AT BRIDGE

SOUTHWEST LRT ALIGNMENT SEGMENT W1 - EDEN PRAIRIE EDEN PRAIRIE TOWN CENTER STATION (DEFERRED)

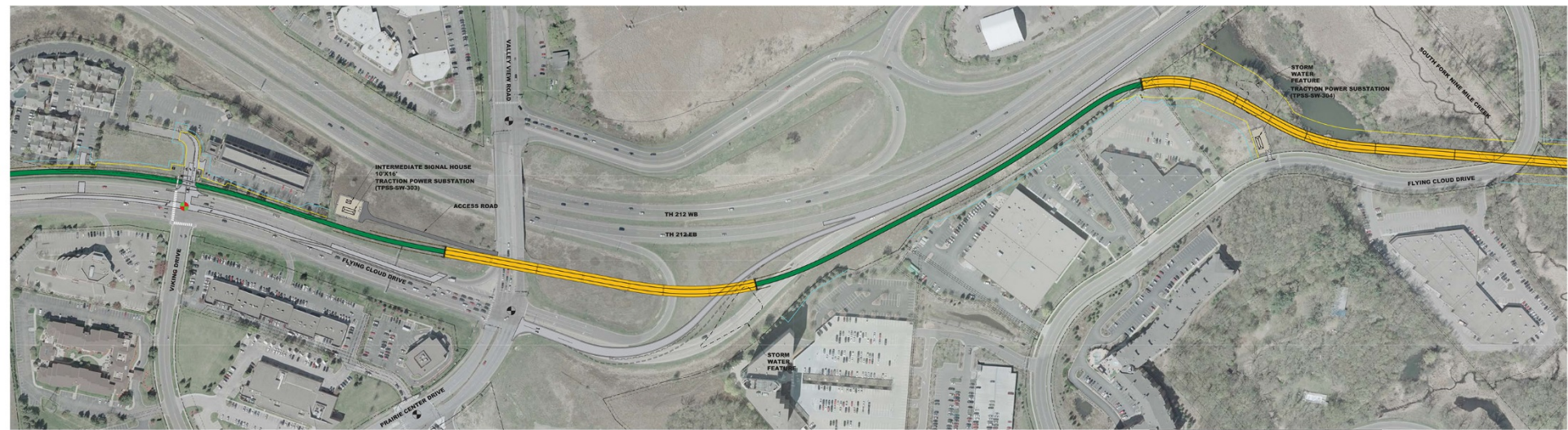
COLOR LEGEND	
	LRT TRACK AREA
	BIKEWAY / BIKEWALK AREA
	STATION PLATFORM
	TUNNEL
	ROADWAY
	TRAIL / BIKEWAY
	SURFACE PARKING
	BRIDGE
	RETAINING WALL
	EXISTING SIGNALIZED INTERSECTION
	PROPOSED SIGNALIZED INTERSECTION
	TRACTION POWER SUBSTATION
	SYSTEMS BUILDING (DESIGN VARIES)
	GATE ARM
	TOTAL PROPERTY ACQUISITION
	PARTIAL PROPERTY ACQUISITION
	RIGHT OF WAY
	PROPERTY LINE
	TEMPORARY CONSTRUCTION SUBWAY



JANUARY 2016



3



SOUTHWEST LRT ALIGNMENT
 SEGMENT W1 / W2 - EDEN PRAIRIE
 NINE MILE CREEK



COLOR KEY	
[Green Line]	LET TRACK AREA
[Green Line]	ALTERNATE / DESIGN AREA
[Green Line]	STATION PLATFORM
[Red Line]	ROADWAY
[Red Line]	RAIL / STREET
[Yellow Line]	SURFACE PARKING
[Yellow Line]	BRIDGE
[Yellow Line]	RETAINING WALL
[Red Circle]	EXISTING SIGNALIZED INTERSECTION
[Red Circle]	PROPOSED SIGNALIZED INTERSECTION
[Red Circle]	STATION TRUCK SUBSTATION
[Red Circle]	STATION BUILDING (OPTIONAL MARKS)
[Red Circle]	DATE AREA
[Red Circle]	TRAIL PROPERTY ACQUISITION
[Red Circle]	PARTIAL PROPERTY ACQUISITION
[Red Circle]	RIGHT OF WAY
[Red Circle]	PROPERTY LINE
[Red Circle]	TERMINARY CONSTRUCTION ELEMENT

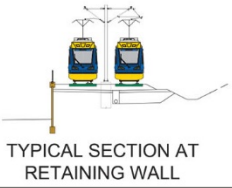
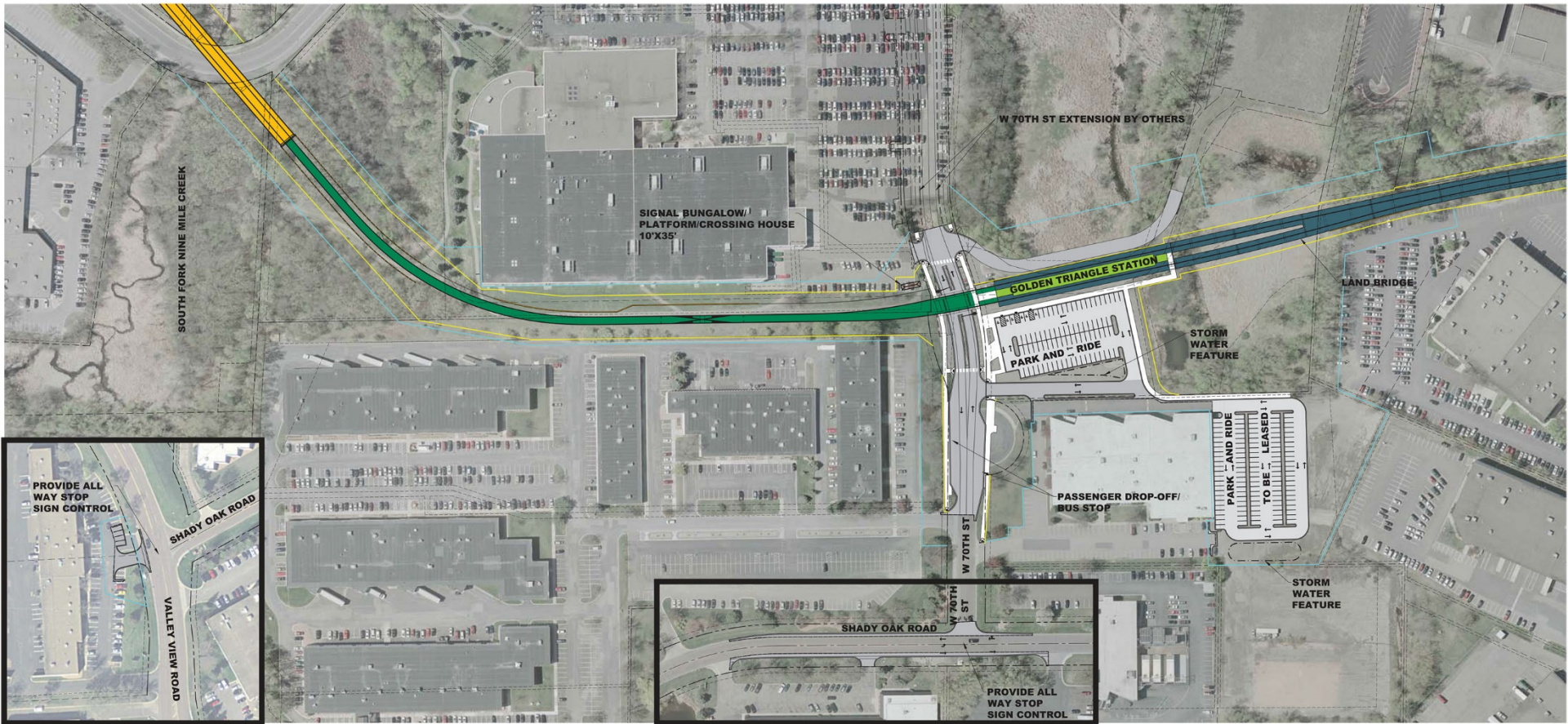


JANUARY 2016



4





SOUTHWEST LRT ALIGNMENT

SEGMENT W2 - EDEN PRAIRIE

GOLDEN TRIANGLE STATION

COLOR LEGEND

	LRT TRACK AREA		EXISTING SIGNALIZED INTERSECTION
	PEDESTRIAN / SIDEWALK AREA		PROPOSED SIGNALIZED INTERSECTION
	STATION PLATFORM		TRACTION POWER SUBSTATION
	TUNNEL		SYSTEMS BUILDING (DESIGN VARIES)
	ROADWAY		GATE ARM
	TRAIL / BIKEWAY		TOTAL PROPERTY ACQUISITION
	SURFACE PARKING		PARTIAL PROPERTY ACQUISITION
	BRIDGE		RIGHT OF WAY
	RETAINING WALL		PROPERTY LINE
			TEMPORARY CONSTRUCTION EASEMENT



JANUARY 2016



5





SOUTHWEST LRT ALIGNMENT
 SEGMENT W2 - EDEN PRAIRIE
 CITY WEST STATION

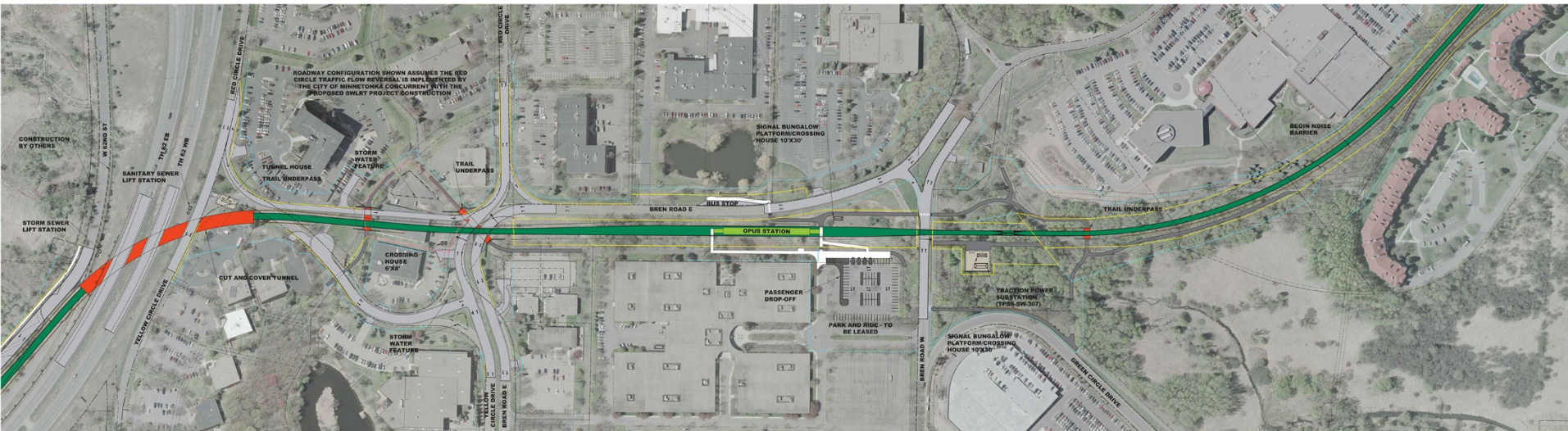
COLOR LEGEND	
[Green Line]	LET TRACK AREA
[Light Green Line]	FULLSTRAK / SIGNALING AREA
[Yellow Line]	STATION PLATFORM
[Red Line]	TRACK
[Grey Line]	ROADWAY
[Dark Grey Line]	RAIL / DRAINAGE
[Orange Line]	GRADE PARKING
[Blue Line]	GRADE
[Light Blue Line]	RETAINING WALL
[Red Circle]	EXISTING SIGNALIZED INTERSECTION
[Red Circle with Arrow]	PROPOSED SIGNALIZED INTERSECTION
[Red Square]	TRACTION POWER SUBSTATION
[Red Square with Arrow]	SYSTEM BUILDING DESIGN MARKER
[Red Square with Arrow]	DATE AREA
[Red Square with Arrow]	TOTAL PROPERTY ACQUISITION
[Red Square with Arrow]	PARTIAL PROPERTY ACQUISITION
[Red Square with Arrow]	EDGE OF WAY
[Red Square with Arrow]	PROPERTY LINE
[Red Square with Arrow]	TEMPORARY CONSTRUCTION EASEMENT



JANUARY 2016



6



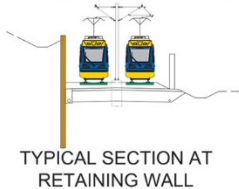
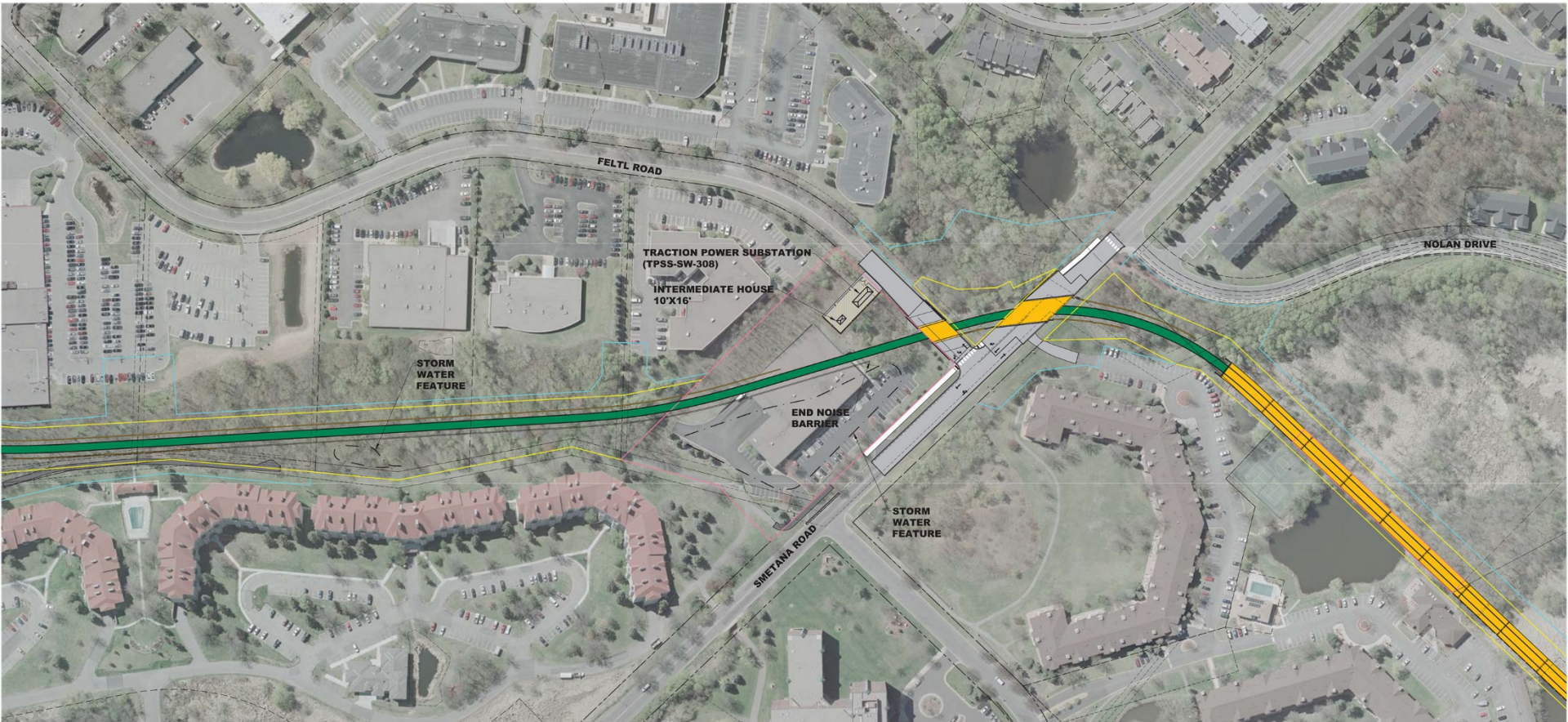
SOUTHWEST LRT ALIGNMENT
 SEGMENT W2 / W3 - EDEN PRAIRIE / MINNETONKA
 OPUS STATION

COLOR LEGEND

Light Green	LET TRACK AREA	Red Circle with Black Center	EXISTING SIGNALIZED INTERSECTION
Dark Green	FOOTPATH / BIKEWAY AREA	Red Circle with White Center	PROPOSED SIGNALIZED INTERSECTION
Orange	STATION PLATFORM	Red Square	TRACTION POWER SUBSTATION
Yellow	TRACK	Red Rectangle	SYSTEM SIGNALING DEVICES MARKERS
Light Blue	ROADWAY	Black Square	DATE AREA
Dark Blue	RAIL / BIKEWAY	Black Circle	TOTAL PROPERTY ACQUISITION
Light Blue	GRADE PARKING	Black Triangle	PARTIAL PROPERTY ACQUISITION
White	GRADE	Black Diamond	RIGHT OF WAY
Light Green	RETAINING WALL	Black Square	PROPERTY LINE
Light Green		Black Square	TEMPORARY CONSTRUCTION EXISTENCE



JANUARY 2016 7



SOUTHWEST LRT ALIGNMENT

SEGMENT W3 - MINNETONKA / HOPKINS

MINNETONKA / HOPKINS BRIDGE

COLOR LEGEND	
	LRT TRACK AREA
	PEDESTRIAN / SIDEWALK AREA
	STATION PLATFORM
	TUNNEL
	ROADWAY
	TRAIL / BIKEWAY
	SURFACE PARKING
	BRIDGE
	RETAINING WALL
	EXISTING SIGNALIZED INTERSECTION
	PROPOSED SIGNALIZED INTERSECTION
	TRACTION POWER SUBSTATION
	SYSTEMS BUILDING (DESIGN VARIES)
	GATE ARM
	TOTAL PROPERTY ACQUISITION
	PARTIAL PROPERTY ACQUISITION
	RIGHT OF WAY
	PROPERTY LINE
	TEMPORARY CONSTRUCTION EASEMENT

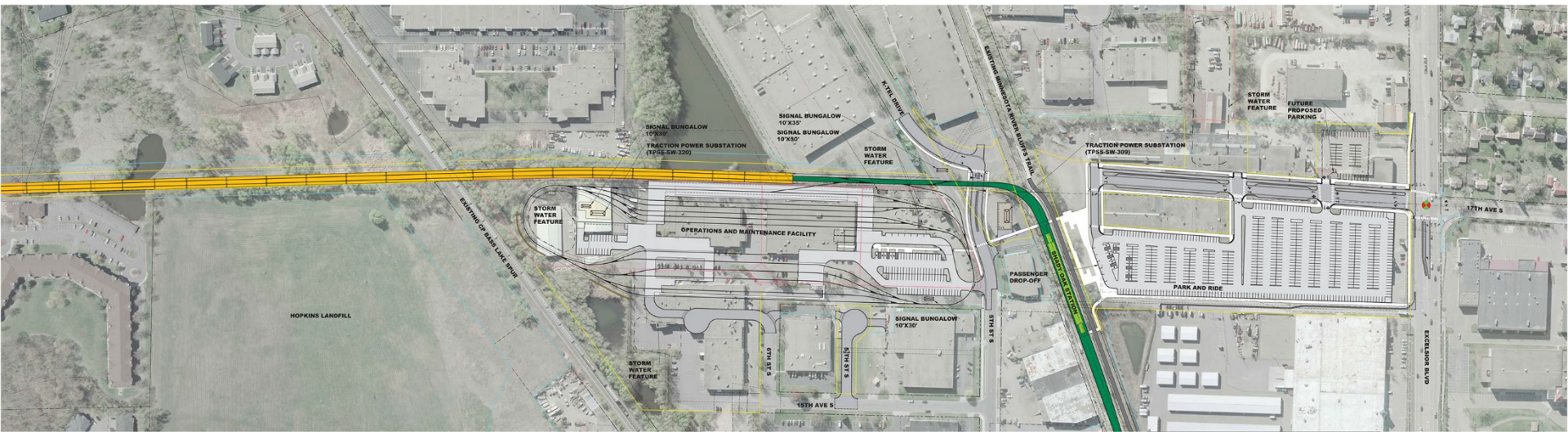


JANUARY 2016



8





SOUTHWEST LRT ALIGNMENT
 SEGMENT W3 - MINNETONKA / HOPKINS
 SHADY OAK STATION



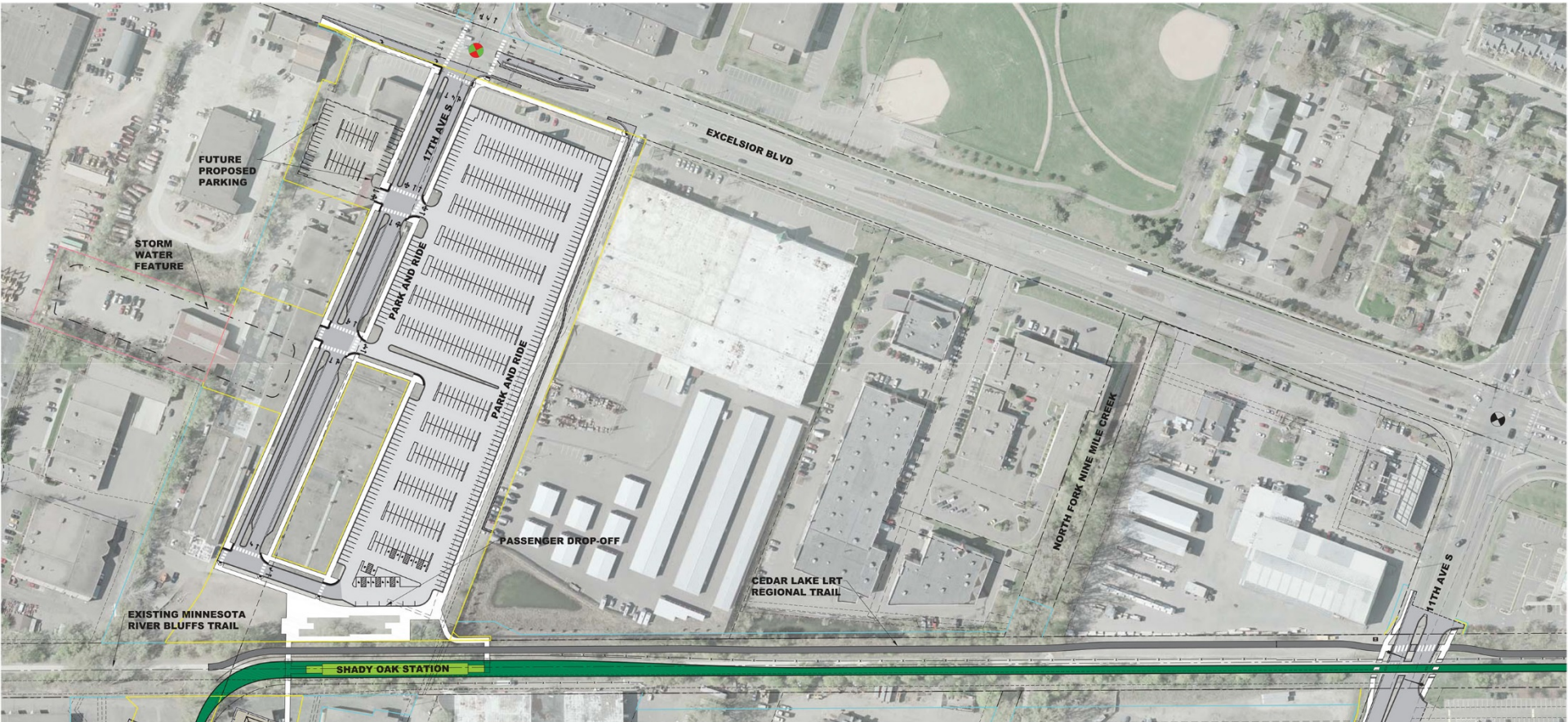
COLOR LEGEND

Light Green	LET TRACK AREA	Red	EXISTING SIGNALIZED INTERSECTION
Dark Green	FOOTPATH / BIKEWAY AREA	Yellow	PROPOSED SIGNALIZED INTERSECTION
Light Blue	STATION PLATFORM	Orange	TRACTION POWER SUBSTATION
Dark Blue	TRACK	Green	SYSTEM SIGNALING DESIGN MARKERS
Light Yellow	ROADWAY	Black	DATE AREA
Light Purple	WALL / BARRIER	Red	TOTAL PROPERTY ACQUISITION
Light Orange	GRADE PARKING	Yellow	PARTIAL PROPERTY ACQUISITION
Light Green	GRADE	Blue	EDGE OF WAY
Light Blue	RETAINING WALL	Black	PROPERTY LINE
		Red	TEMPORARY CONSTRUCTION EXISTENCE



JANUARY 2016

9

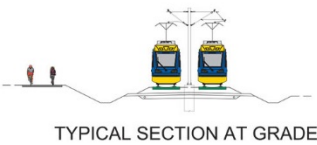
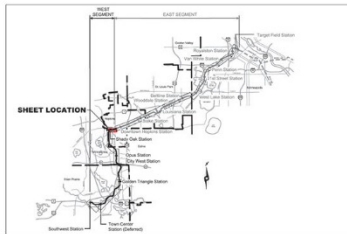


SOUTHWEST LRT ALIGNMENT

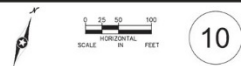
SEGMENT W3 - MINNETONKA / HOPKINS

SHADY OAK STATION

COLOR LEGEND	
	LRT TRACK AREA
	PEDESTRIAN / SIDEWALK AREA
	STATION PLATFORM
	TUNNEL
	ROADWAY
	TRAIL / BIKEWAY
	SURFACE PARKING
	BRIDGE
	RETAINING WALL
	EXISTING SIGNALIZED INTERSECTION
	PROPOSED SIGNALIZED INTERSECTION
	TRACTION POWER SUBSTATION
	SYSTEMS BUILDING (DESIGN VARIES)
	GATE ARM
	TOTAL PROPERTY ACQUISITION
	PARTIAL PROPERTY ACQUISITION
	RIGHT OF WAY
	PROPERTY LINE
	TEMPORARY CONSTRUCTION EASEMENT

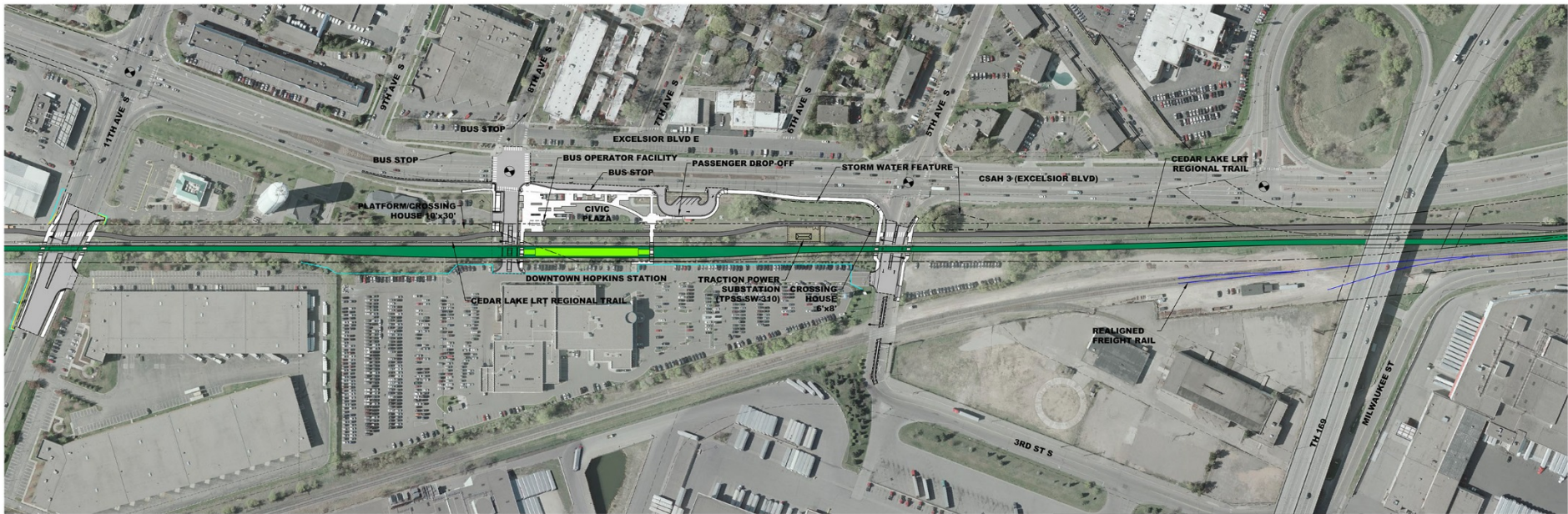


JANUARY 2016

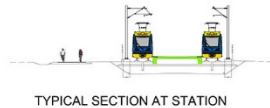


10



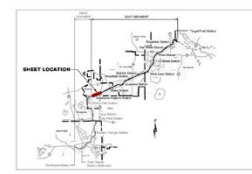


SOUTHWEST LRT ALIGNMENT
 SEGMENT E1 - HOPKINS
 DOWNTOWN HOPKINS STATION

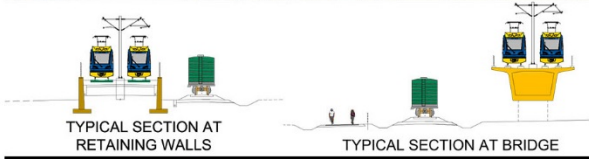
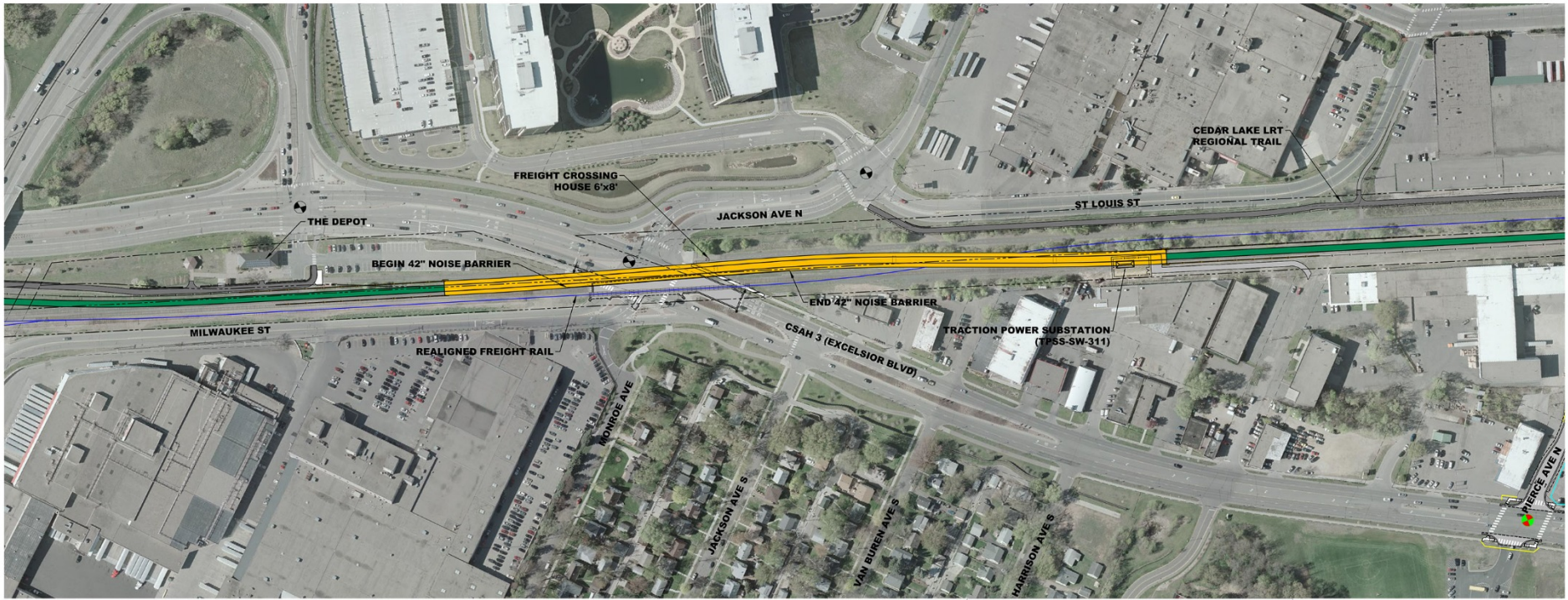


COLOR LEGEND

	LRT TRACK AREA		EXISTING SIGNALIZED INTERSECTION
	FOOTWALK / SIDEWALK AREA		PROPOSED SIGNALIZED INTERSECTION
	STATION PLATFORM		TRACTION POWER SUBSTATION
	TUNNEL		SYSTEMS BUILDING DESIGN (M&E)
	ROADWAY		RAIL SWAY
	TRAIL / BIWAY		TOTAL PROPERTY ACQUISITION
	SURFACE PARKING		PARTIAL PROPERTY ACQUISITION
	BRIDGE		RIGHT OF WAY
	RETAINING WALL		PROPERTY USE
			TEMPORARY CONSTRUCTION EASEMENT



JANUARY 2016



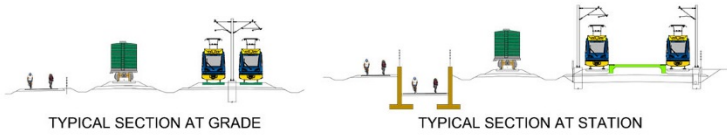
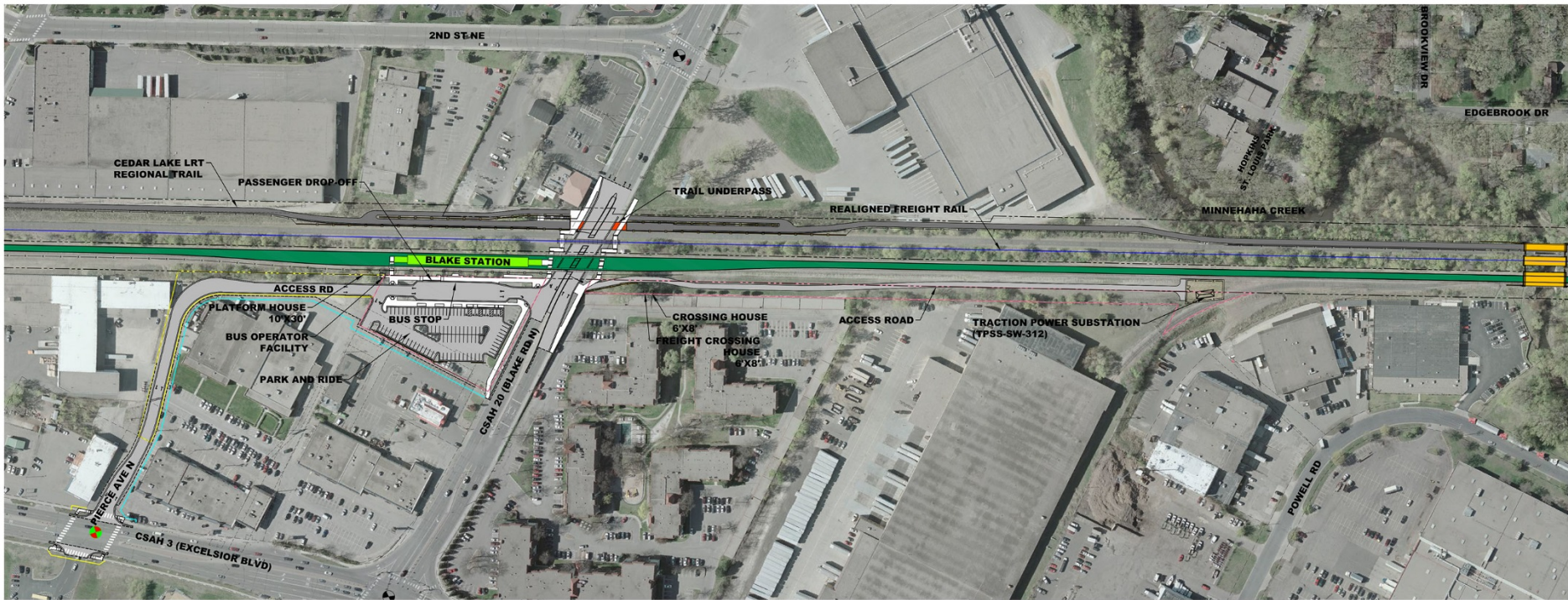
SOUTHWEST LRT ALIGNMENT
 SEGMENT E1 - HOPKINS
 EXCELSIOR BLVD. CROSSING

COLOR LEGEND

	LRT TRACK AREA		EXISTING SIGNALIZED INTERSECTION
	PEDESTRIAN / SIDEWALK AREA		PROPOSED SIGNALIZED INTERSECTION
	STATION PLATFORM		TRACTION POWER SUBSTATION
	TUNNEL		SYSTEMS BUILDING (DESIGN VARIES)
	ROADWAY		GATE ARM
	TRAIL / BIKEWAY		TOTAL PROPERTY ACQUISITION
	SURFACE PARKING		PARTIAL PROPERTY ACQUISITION
	BRIDGE		RIGHT OF WAY
	RETAINING WALL		PROPERTY LINE
			TEMPORARY CONSTRUCTION EASEMENT



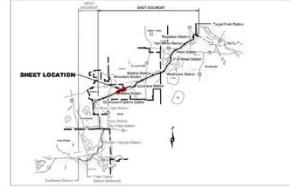
JANUARY 2016



SOUTHWEST LRT ALIGNMENT

SEGMENT E1 - HOPKINS BLAKE STATION

COLOR LEGEND	
█	LRT TRACK AREA
█	PEDESTRIAN / SIDEWALK AREA
█	STATION PLATFORM
█	TUNNEL
█	ROADWAY
█	TRAIL / BIKEWAY
█	SURFACE PARKING
█	BRIDGE
█	RETAINING WALL
●	EXISTING SIGNALIZED INTERSECTION
●	PROPOSED SIGNALIZED INTERSECTION
	TRACTION POWER SUBSTATION
	SYSTEMS BUILDING (DESIGN VARIES)
	GATE ARM
---	TOTAL PROPERTY ACQUISITION
---	PARTIAL PROPERTY ACQUISITION
---	RIGHT OF WAY
---	PROPERTY LINE
---	TEMPORARY CONSTRUCTION EASEMENT



JANUARY 2016



SCALE
0 50 100
HORIZONTAL FEET

13





SOUTHWEST LRT ALIGNMENT SEGMENT E2 - ST. LOUIS PARK MINNEHAHA CREEK

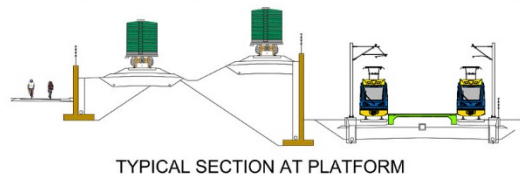
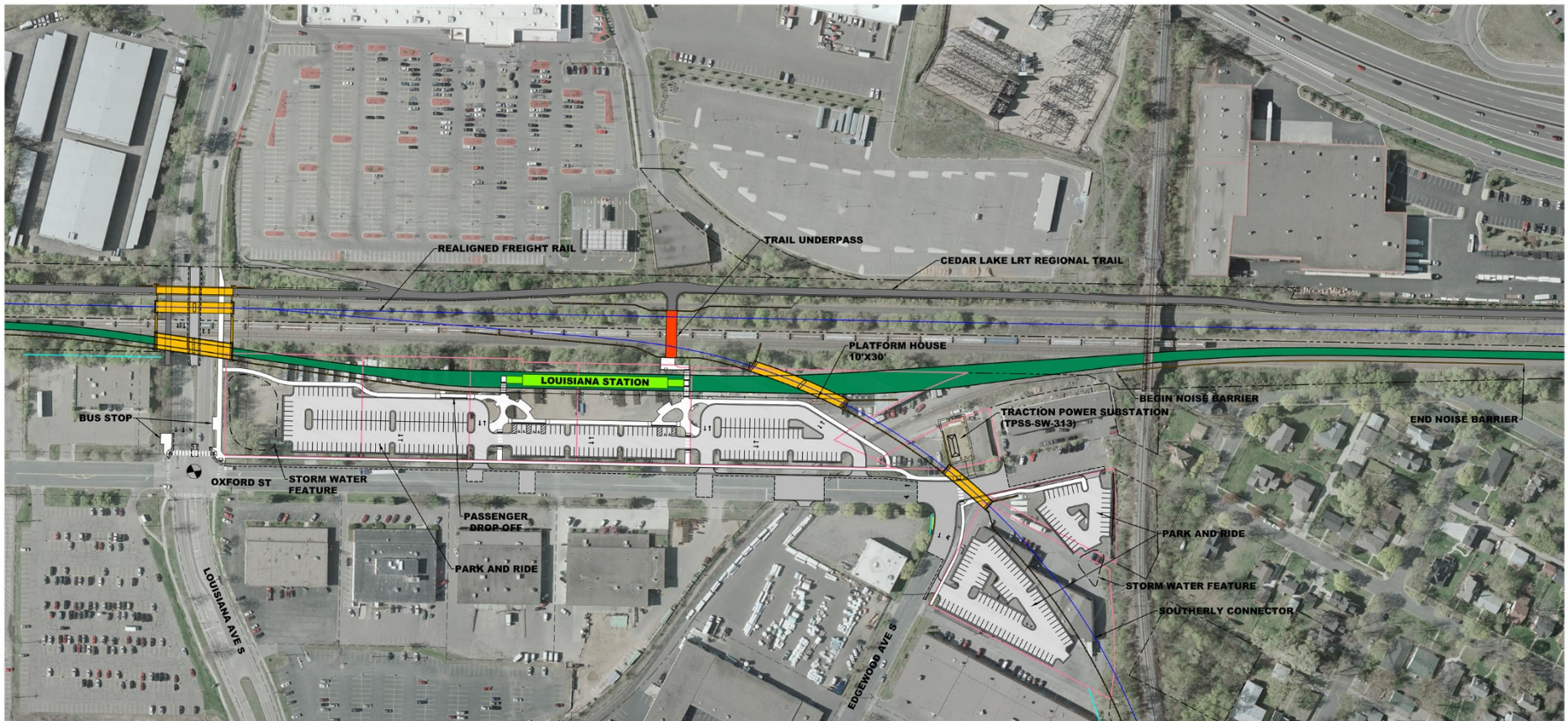
COLOR LEGEND			
	LRT TRACK AREA		EXISTING SIGNALIZED INTERSECTION
	PEDESTRIAN / SIDEWALK AREA		PROPOSED SIGNALIZED INTERSECTION
	STATION PLATFORM		TRACTION POWER SUBSTATION
	TUNNEL		SYSTEMS BUILDING (DESIGN WARNIS)
	ROADWAY		GATE ARM
	TRAIL / BIKEWAY		TOTAL PROPERTY ACQUISITION
	SURFACE PARKING		PARTIAL PROPERTY ACQUISITION
	BRIDGE		RIGHT OF WAY
	RETAINING WALL		PROPERTY LINE
			TEMPORARY CONSTRUCTION EASEMENT



JANUARY 2016



14



SOUTHWEST LRT ALIGNMENT

SEGMENT E2 - ST. LOUIS PARK LOUISIANA STATION

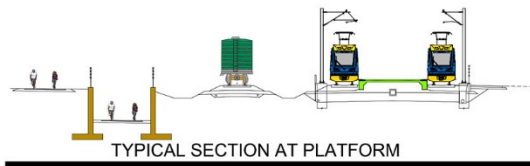
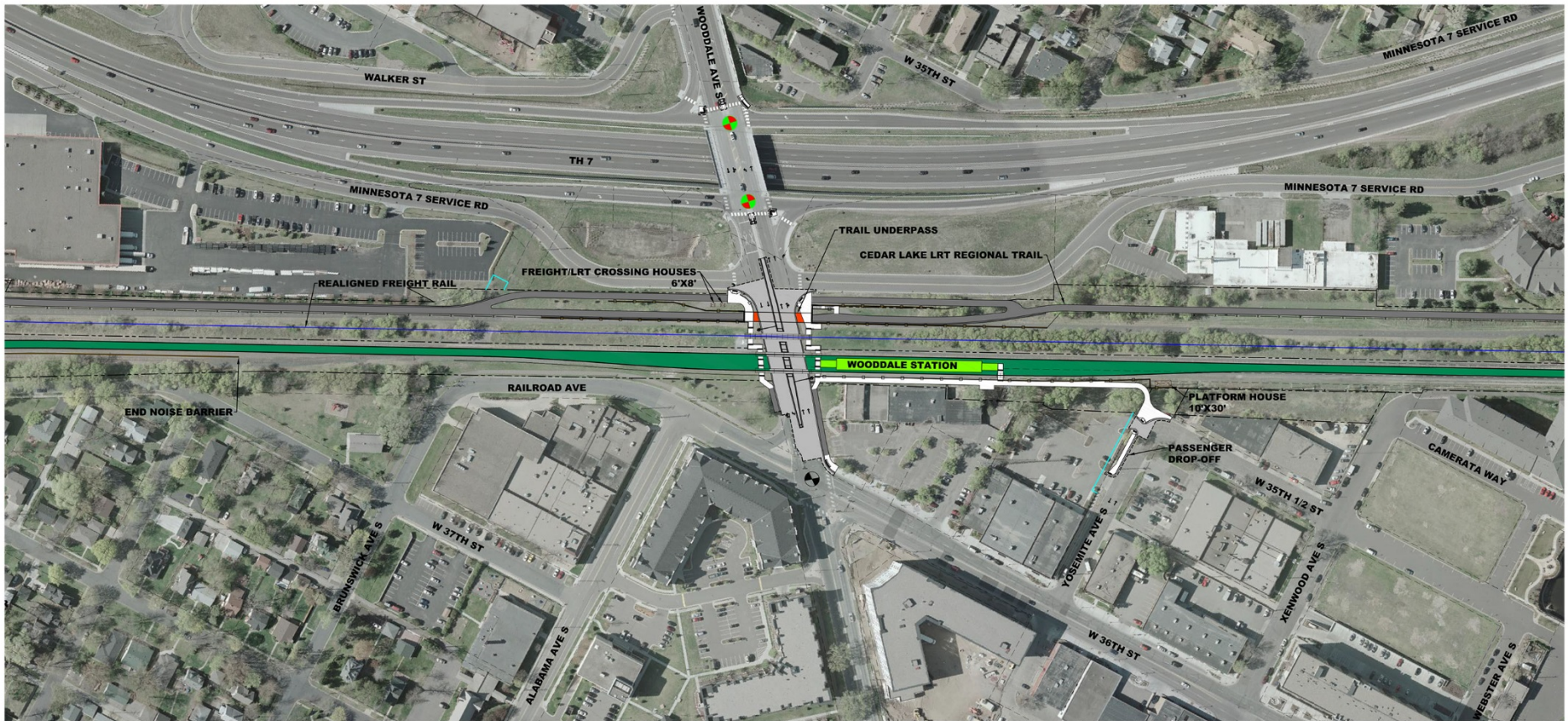
COLOR LEGEND	
█	LRT TRACK AREA
█	PEDESTRIAN / SIDEWALK AREA
█	STATION PLATFORM
█	TUNNEL
█	ROADWAY
█	TRAIL / BIKEWAY
█	SURFACE PARKING
█	BRIDGE
█	RETAINING WALL
	EXISTING SIGNALIZED INTERSECTION
	PROPOSED SIGNALIZED INTERSECTION
	TRACTION POWER SUBSTATION
	SYSTEMS BUILDING (DESIGN VARIES)
	GATE ARM
	TOTAL PROPERTY ACQUISITION
	PARTIAL PROPERTY ACQUISITION
	RIGHT OF WAY
	PROPERTY LINE
	TEMPORARY CONSTRUCTION EASEMENT



JANUARY 2016

SCALE: 0 25 50 100 HORIZONTAL IN FEET

15



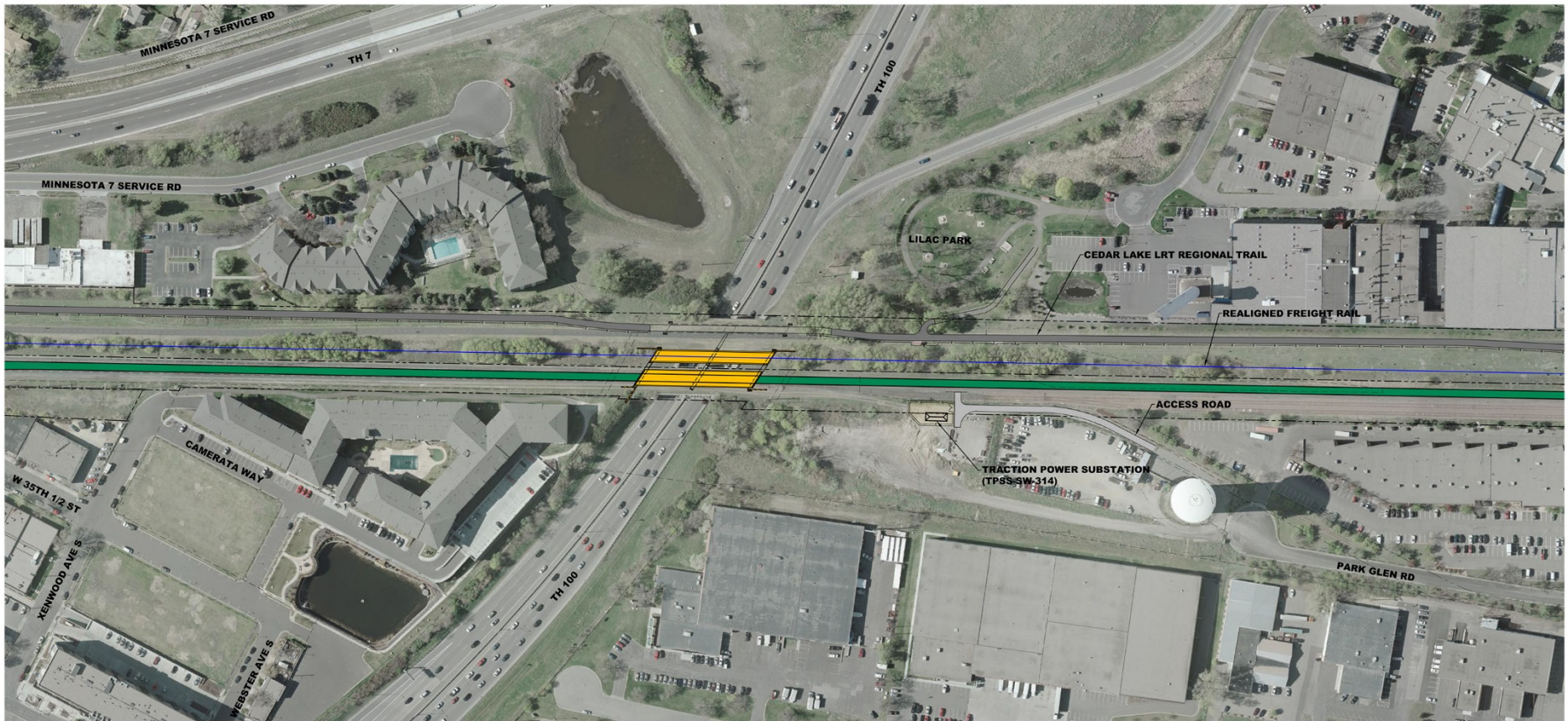
SOUTHWEST LRT ALIGNMENT

SEGMENT E2 - ST. LOUIS PARK WOODDALE STATION

COLOR LEGEND	
█	LRT TRACK AREA
█	PEDESTRIAN / SIDEWALK AREA
█	STATION PLATFORM
█	TUNNEL
█	ROADWAY
█	TRAIL / BIKEWAY
█	SURFACE PARKING
█	BRIDGE
█	RETAINING WALL
●	EXISTING SIGNALIZED INTERSECTION
●	PROPOSED SIGNALIZED INTERSECTION
	TRACTION POWER SUBSTATION
	SYSTEMS BUILDING (DESIGN VARIES)
	GATE ARM
	TOTAL PROPERTY ACQUISITION
	PARTIAL PROPERTY ACQUISITION
	RIGHT OF WAY
	PROPERTY LINE
	TEMPORARY CONSTRUCTION EASEMENT



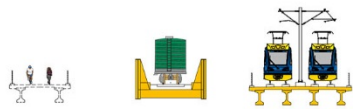
JANUARY 2016 SCALE: 1" = 50' 16



SOUTHWEST LRT ALIGNMENT

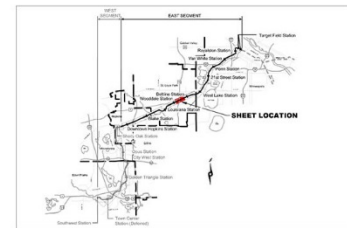
SEGMENT E2 - ST. LOUIS PARK

TH 100



TYPICAL SECTION AT BRIDGE

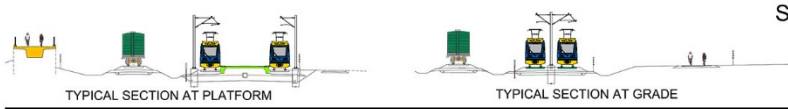
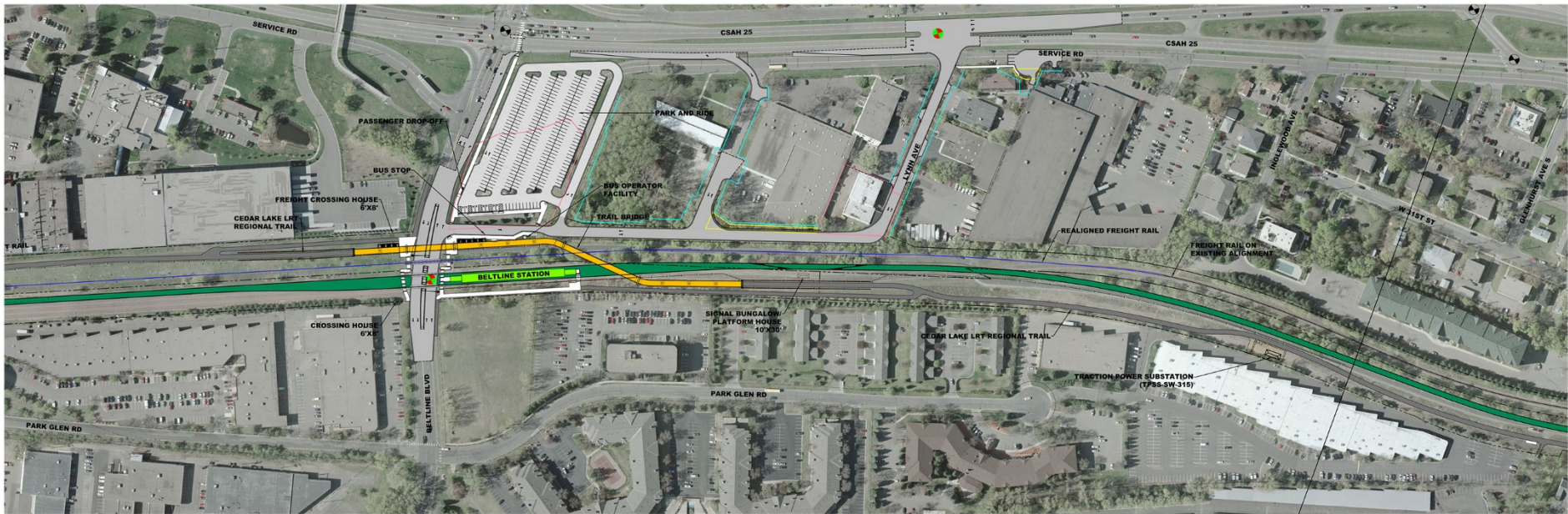
COLOR LEGEND	
█	LRT TRACK AREA
█	PEDESTRIAN / SIDEWALK AREA
█	STATION PLATFORM
█	TUNNEL
█	ROADWAY
█	TRAIL / BIKEWAY
█	SURFACE PARKING
█	BRIDGE
█	RETAINING WALL
	EXISTING SIGNALIZED INTERSECTION
	PROPOSED SIGNALIZED INTERSECTION
	TRACTION POWER SUBSTATION
	SYSTEMS BUILDING (DESIGN VARIES)
	GATE ARM
	TOTAL PROPERTY ACQUISITION
	PARTIAL PROPERTY ACQUISITION
	RIGHT OF WAY
	PROPERTY LINE
	TEMPORARY CONSTRUCTION EASEMENT



JANUARY 2016



17

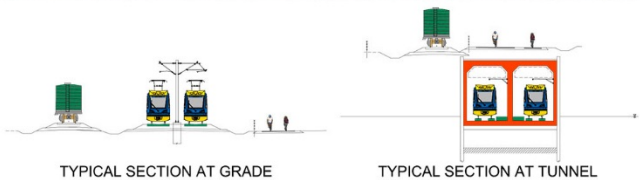
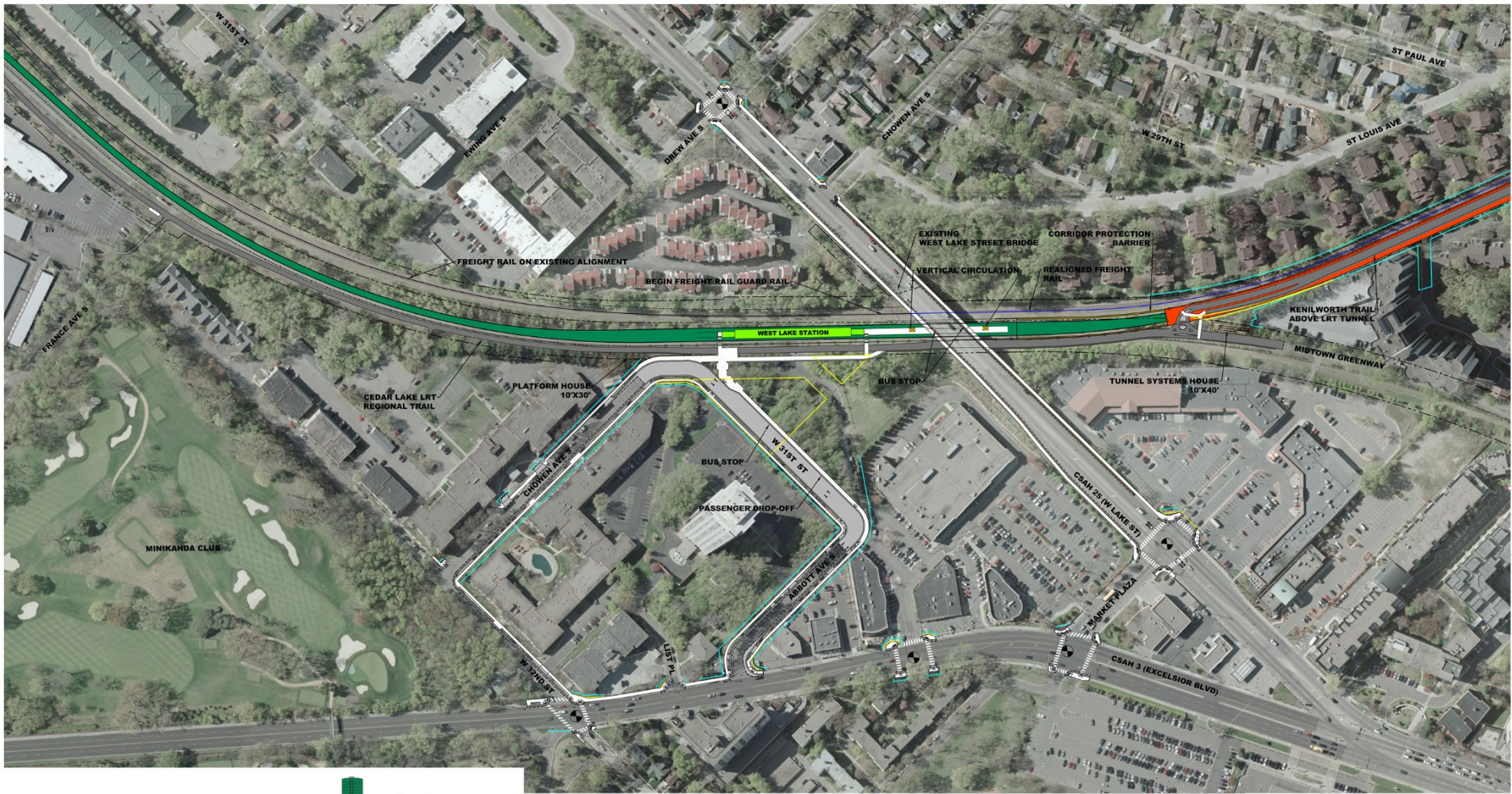


SOUTHWEST LRT ALIGNMENT
 SEGMENT E2 - ST. LOUIS PARK
 BELTLINE STATION

COLOR LEGEND	
[Green Box]	LRT TRACK AREA
[Light Green Box]	BIKEWAY / SIDEWALK AREA
[Yellow Box]	STATION PLATFORM
[Red Box]	TUNNEL
[Grey Box]	ROADWAY
[Light Blue Box]	TRAIL / BIKWAY
[Orange Box]	SURFACE PARKING
[Blue Box]	BRIDGE
[Dark Blue Box]	RETAINING WALL
[Red Circle]	EXISTING SIGNALIZED INTERSECTION
[Green Circle]	PROPOSED SIGNALIZED INTERSECTION
[Red Square]	TRACTION POWER SUBSTATION
[Yellow Square]	SYSTEMS BUILDING (DESIGN 300'x150')
[Blue Square]	RAIL BRIDGE
[Yellow Square]	TOTAL PROPERTY ACQUISITION
[Red Square]	PARTIAL PROPERTY ACQUISITION
[Blue Square]	RIGHT OF WAY
[Light Blue Square]	PROPERTY LINE
[Light Green Square]	TEMPORARY CONSTRUCTION EASEMENT



JANUARY 2016 (18)



SOUTHWEST LRT ALIGNMENT SEGMENT E3 - MINNEAPOLIS WEST LAKE STATION

COLOR LEGEND

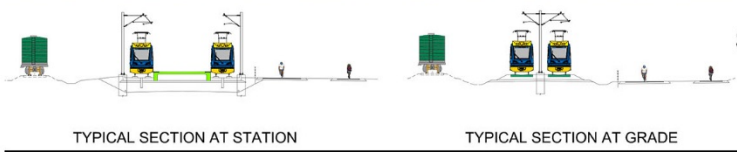
	LRT TRACK AREA		EXISTING SIGNALIZED INTERSECTION
	PEDESTRIAN / SIDEWALK AREA		PROPOSED SIGNALIZED INTERSECTION
	STATION PLATFORM		TRACTION POWER SUBSTATION
	STAGING		EXISTING BUILDING (DESIGN WORKS)
	ROADWAY		GATE ARM
	TRAIL / BIWAY		TOTAL PROPERTY ACQUISITION
	SURFACE PARKING		PARTIAL PROPERTY ACQUISITION
	BRIDGE		RIGHT OF WAY
	RETAINING WALL		PROPERTY LINE
			TEMPORARY CONSTRUCTION EASEMENT



JANUARY 2016

SCALE: 1" = 100' (VERTICAL) 1" = 100' (HORIZONTAL)

19



SOUTHWEST LRT ALIGNMENT SEGMENT E3 - MINNEAPOLIS 21ST ST STATION

COLOR LEGEND	
	LRT TRACK AREA
	STATION PLATFORM
	TUNNEL
	ROADWAY
	TRAIL / BIKEWAY
	SURFACE PARKING
	BRIDGE
	RETAINING WALL
	EXISTING SIGNALIZED INTERSECTION
	PROPOSED SIGNALIZED INTERSECTION
	TRACTION POWER SUBSTATION
	SYSTEMS BUILDING (DESIGN VARIES)
	GATE ARM
	TOTAL PROPERTY ACQUISITION
	PARTIAL PROPERTY ACQUISITION
	RIGHT OF WAY
	PROPERTY LINE
	TEMPORARY CONSTRUCTION EASEMENT

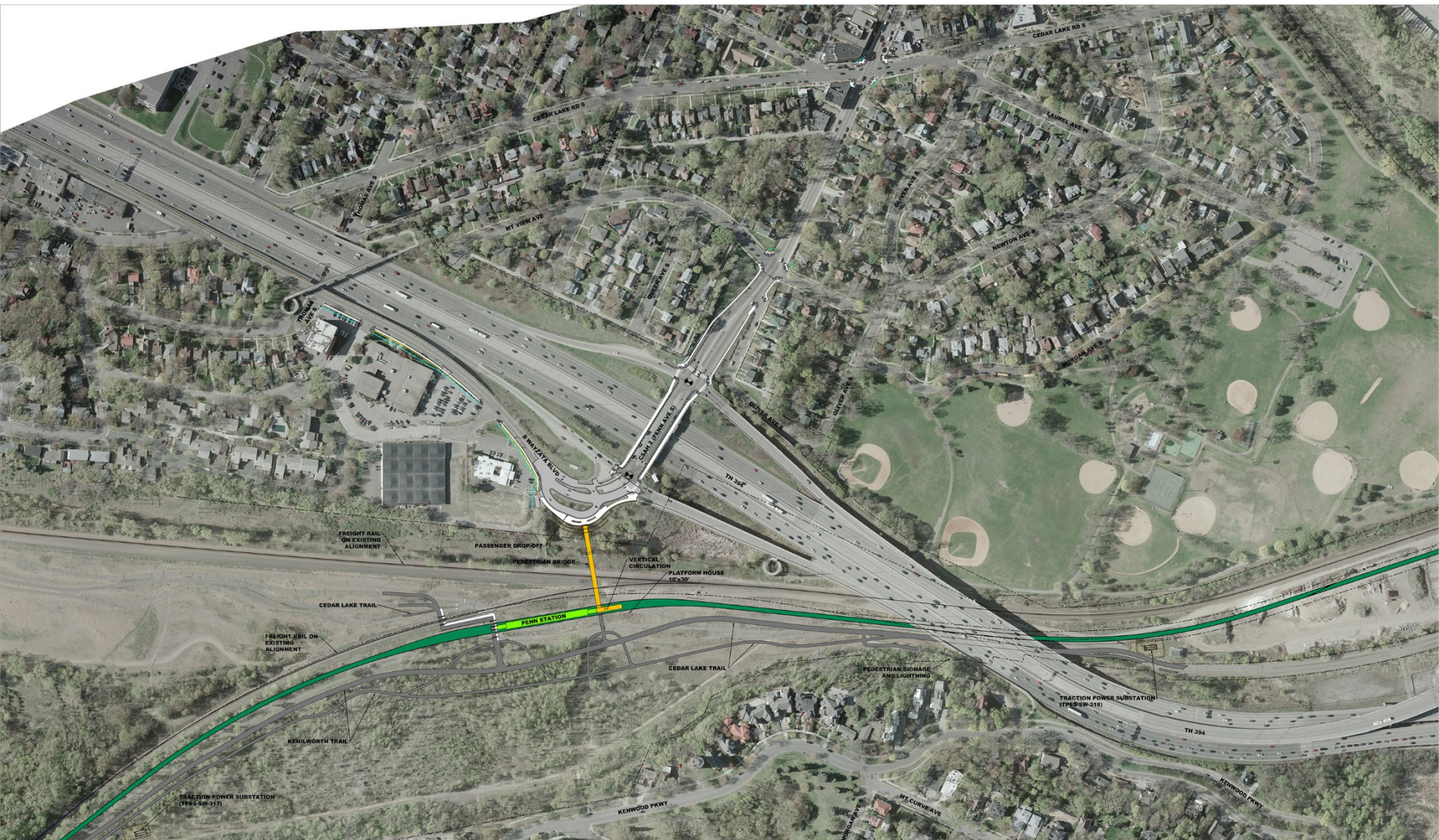


JANUARY 2016

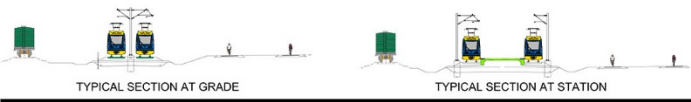


21



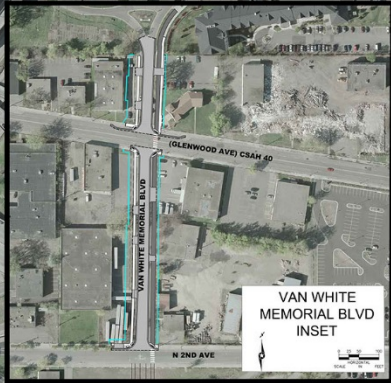
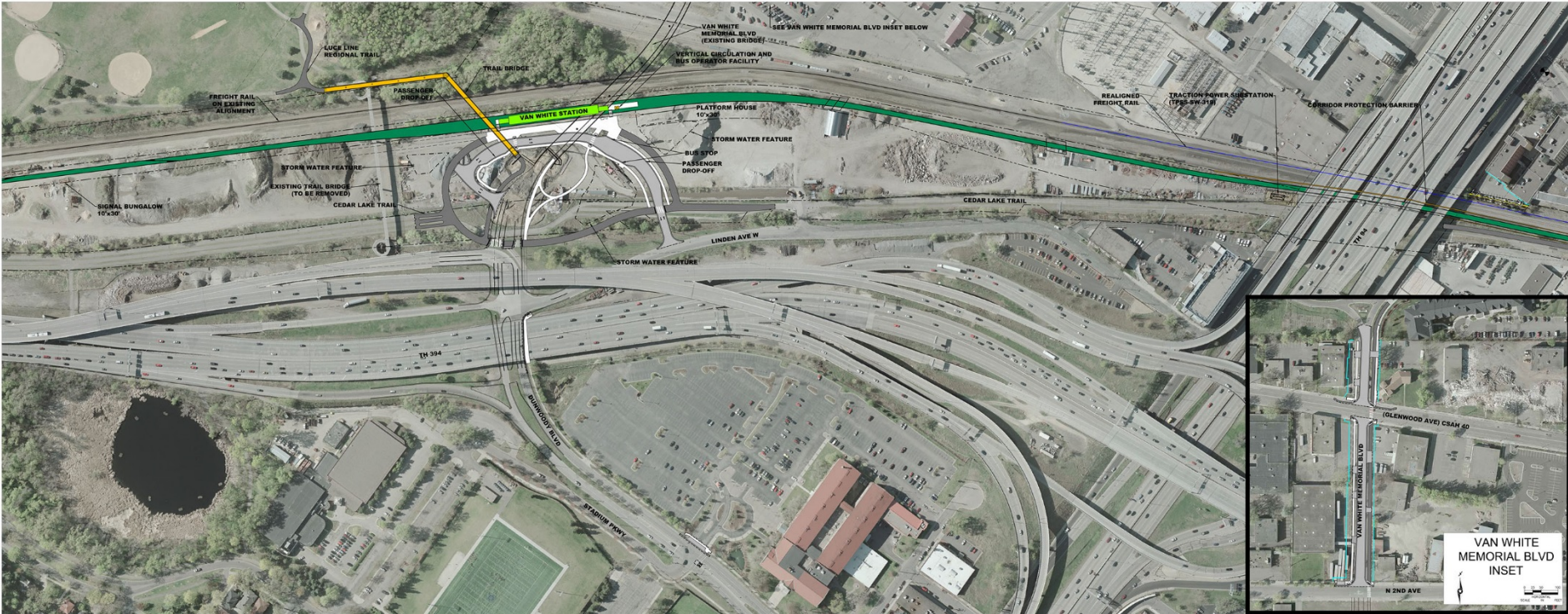


SOUTHWEST LRT ALIGNMENT
 SEGMENT E4 - MINNEAPOLIS
 PENN STATION



COLOR KEY		SYMBOL
Green	LET TRAIL AREA	Proposed Signalized Intersection
Yellow	PEDESTRIAN / SERVICE AREA	Proposed Signalized Intersection
Light Green	STATION PLATFORM	Traction Power Substation (General Area)
Orange	STATION	Signal Substation (General Area)
Red	ROADWAY	Right of Way
Dark Grey	DECK / BALANCE	Signal Property Acquisition
Light Grey	SURFACE PARKING	Signal Property Acquisition
Dark Grey	BRIDGE	Right of Way / Property Line
Light Green	STATION HALL	Temporary Construction Easement





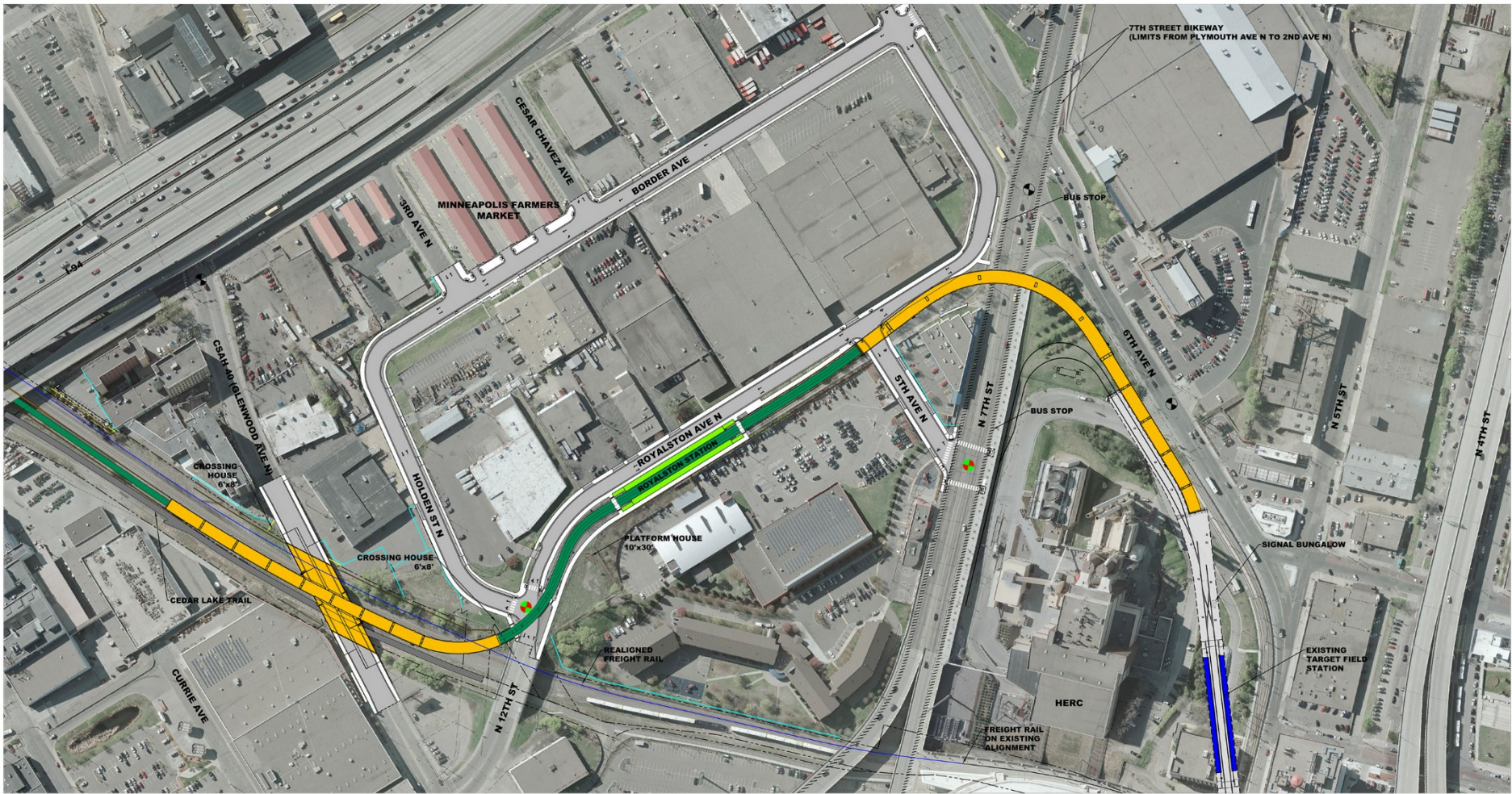
SOUTHWEST LRT ALIGNMENT
 SEGEMENT E4 - MINNEAPOLIS
 VAN WHITE STATION

COLOR LEGEND

Light Green	NET TRACK AREA	Red	EXISTING SIGNALIZED INTERSECTION
Dark Green	RESERVED / REGIONAL AREA	Yellow	PROPOSED SIGNALIZED INTERSECTION
Light Blue	STATION PLATFORM	Orange	TRACTION POWER SUBSTATION (GENERAL AREA)
Orange	PLANS	Green	STREET, REGIONAL USE GENERAL AREA
Yellow	PROPOSED	Blue	LAND USE
Grey	EXISTING	Light Green	RIGHT-OF-WAY ACQUISITION
Dark Grey	TRAIL / BRIDGE	Dark Green	TRAIL PROPERTY ACQUISITION
Light Green	SURFACE PARKING	Light Blue	TRAIL PROPERTY ACQUISITION
Dark Green	BRIDGE	Dark Blue	RIGHT-OF-WAY ACQUISITION
Light Green	BRIDGES PROTECTION BARRIERS	Light Blue	PROPERTY LINE



JANUARY 2016 **23**



7TH STREET BIKEWAY
(LIMITS FROM PLYMOUTH AVE N TO 2ND AVE N)

MINNEAPOLIS FARMERS MARKET

CESAR CHAVEZ AVE

BORDER AVE

3RD AVE N

BUS STOP

CROSSING HOUSE 6'x8'

CEDAR LAKE TRAIL

CURRIE AVE

CROSSING HOUSE 6'x8'

N 12TH ST

ROYALSTON AVE N

ROYALSTON STATION

PLATFORM HOUSE 10'x30'

REALIGNED FREIGHT RAIL

5TH AVE N

N 7TH ST

BUS STOP

9TH AVE N

SIGNAL BUNGALOW

EXISTING TARGET FIELD STATION

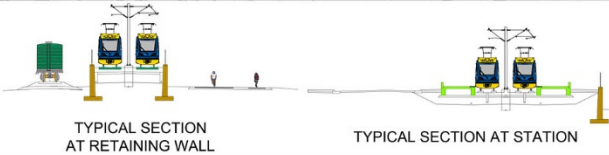
HERC

FREIGHT RAIL ON EXISTING ALIGNMENT

COLOR LEGEND

	LRT TRACK AREA		EXISTING SIGNALIZED INTERSECTION
	PEDESTRIAN / SIDEWALK AREA		PROPOSED SIGNALIZED INTERSECTION
	STATION PLATFORM		TRACTION POWER SUBSTATION (GENERAL AREA)
	SIGNAL		SIGNAL BUNGALOW (GENERAL AREA)
	ROADWAY		GATE ARM
	TRAIL / BIKEWAY		TOTAL PROPERTY ACQUISITION
	SURFACE PARKING		PARTIAL PROPERTY ACQUISITION
	BRIDGE		RIGHT OF WAY
	RETAINING WALL		PROPERTY LINE
			TEMPORARY CONSTRUCTION EASEMENT

SOUTHWEST LRT ALIGNMENT
SEGMENT E4 - MINNEAPOLIS
ROYALSTON STATION



TYPICAL SECTION AT RETAINING WALL

TYPICAL SECTION AT STATION



JANUARY 2016



24



Construction Outreach and Communications

Construction Outreach/Communication Plan

- Includes lessons learned/feedback from Blue and Green Lines
- Incorporates best practices from national, large-scale public works projects
- Developed in conjunction with SWLRT advisory committees
- Ensures clear, consistent project information throughout construction
- Describes methods/techniques to inform the public
- Includes metrics/evaluation

Construction Outreach/Communications

- Best practices:
 - Community construction communication committee
 - Outreach coordinators
 - 24-hour construction hotline
 - Property/business owners meetings
 - Public meetings
 - Construction tours
 - Neighborhood updates
 - Social media/website/media
 - Weekly construction updates
 - Signage



Disadvantaged Business Enterprise & Workforce Andrew Larson



Topics

- What is DBE Program?
- CCLRT DBE Achievement
- DBE Monitoring
- Workforce Requirements



What is the DBE Program?

- Disadvantaged Business Enterprise
- Federal Equal Opportunity Program
- Any recipient of federal DOT funds
- Small business subcontracting goals



Where to Find DBE Firms

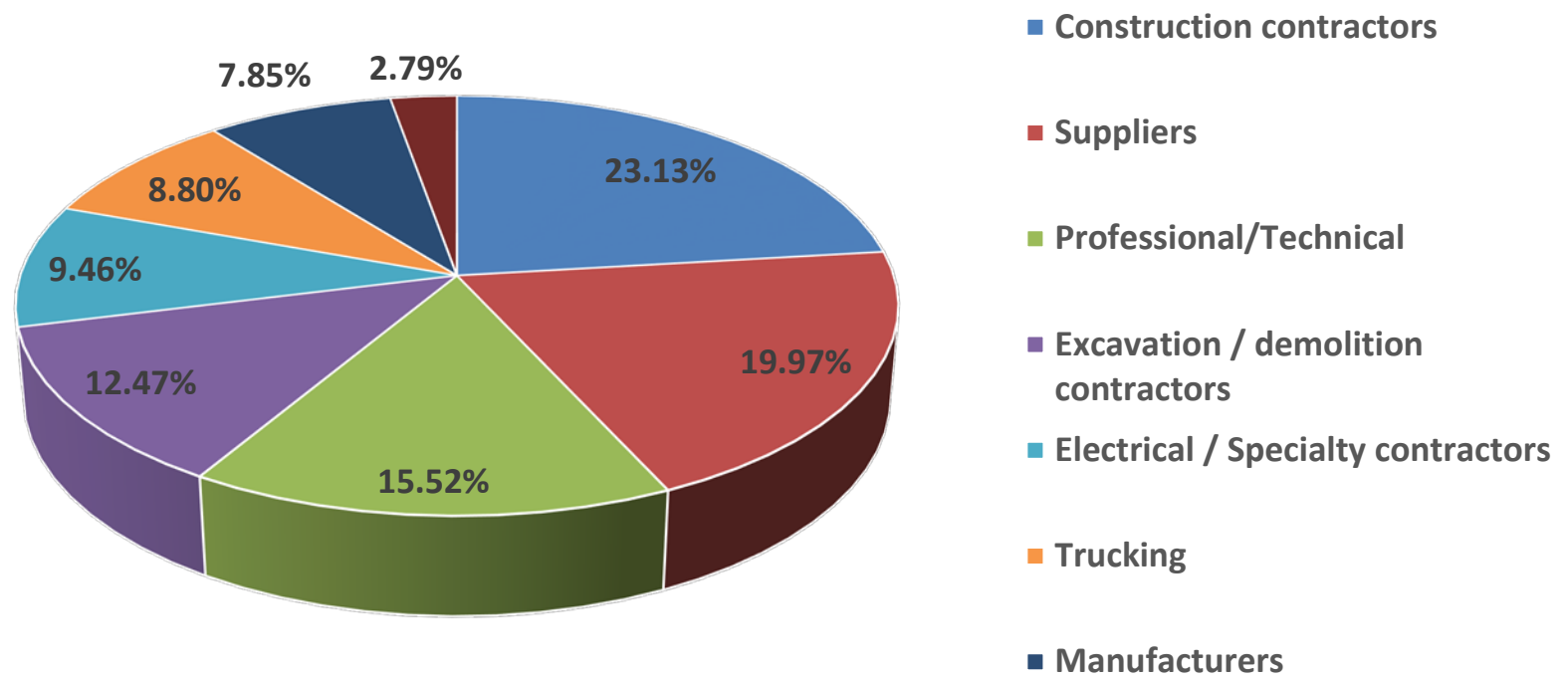
- Minnesota Unified Certification Program
- Directory of firms available at:

www.mnucp.org



Central Corridor LRT DBE Work Breakdown

\$125,328,239



Project Goals

- Project specific DBE subcontracting goals will be determined
- Workforce labor goals for Hennepin County:
 - 32% minority
 - 6% female



Oversight Activities

- Pre-bid info sessions
- Bid evaluation and reference checks
- Field verification interviews
- Monthly oversight committee
- Annual DBE/Workforce Summit
- Annual DBE Roundtable
- Post-project record audit



DBE Contact Info:

Andrew Larson

Senior EO Consultant

Southwest Project Office

612-373-3896

andrew.larson@metrotransit.org

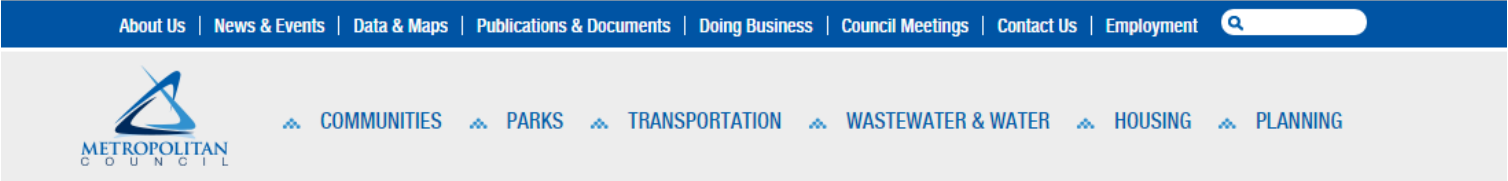
Met Council Bidding Process Overview Jody Jacoby

Contracting and Procurement

- Procure goods and services required to meet the Council's needs and fulfill its mission
- As economically as feasible, in a manner that is efficient, straightforward, and equitable
- Complies with all federal, state, and local laws and regulations and all other Council policies

Bid Advertisement

- www.metrocouncil.org: under “Doing Business” tab
- QuestCDN



- WHAT WE DO**
- Doing Business
- Contracting Opportunities
- Small Business Programs & Resources
- Council Invoice Payments

- Meetings, Agendas & Hearings
- Contact Us
- Employment
- Publications & Documents
- Council Fact Sheets

CONTRACTING OPPORTUNITIES

The Council frequently has contracting opportunities for businesses. The Council's publicly advertised solicitations for contracts are listed below. For details about specific contacts, select the contract number to see the details in PDF format. For best results use the latest version of [Acrobat Reader](#).

The Council tries to ensure that information about contracts is current and accurate. However, the only information to be relied upon for a contract solicitation is the information that is distributed to persons listed with the Council as document holders for that solicitation. To be listed, contact the person identified in the contract solicitation document. The document holders list is public information and will be distributed to whoever requests it. To request information regarding contract awards, see the [Council's Data Access Procedures](#) (36 pages, pdf).

NOTE: See [important changes affecting Contracts and Project requirements \(pdf\)](#) as a result of the 2014 Legislative Session.

Divisions of the Met Council

- CD** - Community Development
- ES** - Environmental Services
- LRT** - Light Rail Transit
- MTS** - Metropolitan Transportation Services
- RA** - Regional Administration
- Transit** - Metro Transit

Types of Solicitation

- A/E** - Architectural/Engineering Services
- Conet.** - Construction
- D/B** - Design/Build
- IFB** - Invitation for Bids
- PSD** - Prequalification Submittal Documents
- RFP** - Request for Proposal
- RFI** - Request for Information

Division Number	Title/General Description	Issue Date	Due Date	Type
Transit 15P198	Metro Transit Operator and Misc. Personnel Uniforms	9/10/2015	10/19/2015	IFB
ES 15P226	Richfield Interceptor Systems (RIS) - 66th Street	9/24/2015	10/22/2015	IFB
RA 15P092	Print Services	9/24/2015	10/22/2015	IFB
ES 15P217	Master Contracts for Wastewater Reuse Services	9/29/2015	10/27/2015	RFP
Transit 15P103	Shelter/Station Development Class	9/29/2015	10/28/2015	IFB



Bid Advertisement

- www.metrocouncil.org: under “Doing Business” tab
- QuestCDN

The screenshot shows the QuestCDN website interface for the Metropolitan Council. The browser address bar displays 'http://oap.questcdn.com/oap/projects/prj_browse'. The navigation menu includes 'About Us', 'News & Events', 'Data & Maps', 'Publications', 'Doing Business', 'Council Meetings', 'Contact Us', and 'Employment'. The 'Doing Business' tab is active, showing 'Project Results' and 'My Quest Account' options. A search bar is present with a 'search' button and a 'Show all' link. Below the search bar, there is a table of bid advertisements.

Post Date/Time	Category	Name	Bid Date/Time	City	County	St	Owner
10/06/15 01:03 PM	071-00 Automobiles, School Buses Miscellaneous	6,000 Gallon Sludge Truck	11/03/2015 02:00 PM CST	St. Paul	Ramsey	MN	Metropolitan Council
09/10/15 08:52 AM	200-00 Clothing: Athletic, Casual, Miscellaneous	Metro Transit Operator and Misc.	10/19/2015 02:00 PM CDT	St. Paul	Ramsey	MN	Metropolitan Council
10/05/15 11:58 AM	557-00 Mass Transportation-Trans Fleet	Engines for Metro Mobility Buses	11/03/2015 02:00 PM CST	St. Paul	Ramsey	MN	Metropolitan Council
10/05/15 11:53 AM	557-00 Mass Transportation-Trans Fleet	Transmissions for Metro Mobility E	11/03/2015 02:00 PM CST	St. Paul	Ramsey	MN	Metropolitan Council
09/24/15 09:50 AM	558-00 Mass Transportaion- Rail V Fleet	Metropolitan Council Procurement	12/18/2015 02:00 PM CST	St. Paul	Ramsey	MN	Metropolitan Council
09/24/15 02:38 PM	700-00 Printing Plant Equipment & Fleet	Print Services for the Metropolitan	10/22/2015 02:00 PM CDT	St. Paul	Ramsey	MN	Metropolitan Council
10/08/15 07:57 AM	915-00 Communications & Media Miscellaneous RFP/RFQ/RFLOI	MASTER CONTRACTS FOR PROJE	11/09/2015 05:00 PM CST	St. Paul	Ramsey	MN	Metropolitan Council
10/05/15 12:55 PM	Architectural/Engineering Services Buildings Rehabilitation/Renovatio Buildings/Public Design Electrical Installation/Construction Miscellaneous	Full Service Master Interceptor En	11/05/2015 05:00 PM CST	St. Paul	Ramsey	MN	Metropolitan Council
09/28/15 04:48 PM	Architectural/Engineering Services Geotechnical Miscellaneous	Master Contracts for Wastewater I	10/27/2015 05:00 PM CDT	Multiple	Multiple	MN	Metropolitan Council

Bid Documents

- Link to QuestCDN site provided in the advertisement posted on Doing Business with the Council
- Select “*View Plans*” to review documents (or at least a summary) at no charge
- Select “*Download Project PDF*” to download complete set for a fee of \$10.00; system will walk you through registration & payment

http://qap.questcdn.com/qap/projects/prj_browse/ipp_browse.html?projbrowse=true&jobNo=4127632&n

[Previous](#) [Next](#) [Close Window](#)

View Plan Holders **Download Project PDF** **Addenda** **View Plans**

6,000 Gallon Sludge Truck (Quest Project #4127632)

Print Ad

county/city/state: Ramsey - St. Paul, MN
directions to site:
bids close: 11/03/2015 02:00 PM CST
bids received by: Sealed Bid for "Sludge Truck - 6,000 Gallon" Enclosed Metropolitan Council
Pamela Marszalek 390 North Robert Street St. Paul, Minnesota 55101
owner project number: 15P210
project description: One current model year; 6,000 gallon capacity wastewater sludge truck for delivery prior to December 31, 2016.
owner: Metropolitan Council
390 N. Robert St
St. Paul, MN 55101
ph: 602-651-1573
contact: Pamela Marszalek
e-mail: pamela.marszalek@metc.state.mn.us

Soliciting Agent: Soliciting agent
Metropolitan Council
390 N. Robert St
St. Paul, MN 55101
ph: 602-651-1573
contact: Pamela Marszalek
e-mail: pamela.marszalek@metc.state.mn.us

project documents: Will be available 10/6/15
Quest eBidDocs™: Download cost is **\$10.00**, file size is **.4 Mb**.

Bid Process

- Who do I contact if I have a question about the bid documents?
 - Auburn Dees, IFB Administrator
 - auburn.dees@metc.state.mn.us
 - 651-602-1346
- Attend pre-bid meeting
 - Meeting date, time and location will be in solicitation documents

Construction Mixer Details

Sam O'Connell

Construction Mixer

- Construction Contractors/Firms
- Met Council DBE/Workforce Specialists
- Trade Associations
- Southwest Project Office Staff
- Met Council Contracts and Procurement Staff

Construction Mixer

- Exhibitors:
 - Associated General Contractors of Minnesota
 - Association of Women Contractors Minnesota
 - Aldridge Electric
 - Ames-Kramer JV
 - Graham
 - Lunda/Parsons/C.S. McCrossan Joint Venture
 - MEC/Egan JV
 - Meyer Contracting
 - Southwest Rail Constructors
 - Southwest Transit Constructors
 - The Reinforced Earth Company
 - Veit

- Full list of attendees will be posted on SWLRT.org

More Information

Online:

www.SWLRT.org

Email:

SWLRT@metrotransit.org

Twitter:

www.twitter.com/southwestlrt

