

Light Rail Construction Contracting Open House

METRO Green Line Extension (Southwest LRT) Project

DECEMBER 5, 2016

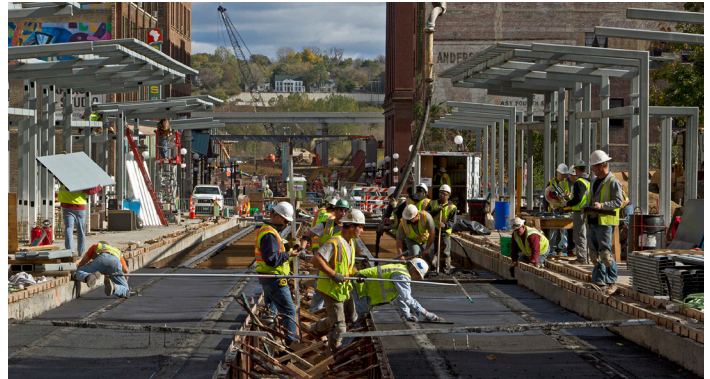
2:00 – 4:30 P.M.

Minnetonka Community Center

14600 Minnetonka Boulevard

Minnetonka, MN 55345

Map: <https://goo.gl/maps/t4c73>



Don't miss the train!

Construction of the planned METRO Green Line Extension (Southwest LRT) project creates many contracting and subcontracting opportunities. The prime contractors for this project will subcontract with hundreds of firms.

Attend this free informational event to learn about contracting opportunities in:

- Construction
- Demolition
- Electrical
- Excavation
- HVAC
- Trackwork
- Hauling
- Manufacturing
- Plumbing
- And more!

Agenda

2:00 – 3:00: Presentation by Metropolitan Council staff

The event will begin with a one-hour presentation by Metropolitan Council staff, covering the following topics:

- The project, contracts, and construction timeline.
- The Disadvantaged Business Enterprise (DBE) program, which helps eligible minority-owned and women-owned businesses participate in public contracts.
- The bidding process.

3:00 – 4:30: Contractor mixer

The presentation will be followed by a 90-minute mixer where attendees can meet members of the project staff, potential prime contractors, DBE/workforce specialists, trade association representatives and others.

Exhibitor and Attendee Registration

Pre-registration is not required to attend, but individuals and firms are encouraged to register online or contact the staff member listed below. You can also sign up to receive updates on contract procurement.

Online registration and information:

metro council.org/swlrt/contracting-open-house

Individual registration and questions:

Mary Richardson
612-373-3929
mary.richardson@metrotransit.org

Prime contractors and trade organizations interested in exhibiting at the open house:

Andrew Larson
612-373-3896
andrew.larson@metrotransit.org



Project Overview: METRO Green Line Extension (Southwest LRT)

The Southwest Light Rail Transit (LRT) Project (METRO Green Line Extension) will operate from downtown Minneapolis through the communities of St. Louis Park, Hopkins, Minnetonka and Eden Prairie, passing in close proximity to Edina.

The proposed alignment is primarily at-grade and includes 15 new stations and approximately 14.5 miles of double track as well as 29 new bridges, modifications of seven existing bridges, two new LRT tunnels, and six pedestrian tunnels. Eight new park-and-ride facilities will be built, including a 450-space structure at SouthWest Station. An Operations and Maintenance Facility (OMF) with facilities for storage and light maintenance of light rail vehicles as well as offices for supervisory staff is also part of the project.

The project has nearly completed engineering and design work and completed the environmental review process in 2016. Heavy construction will be underway from 2017 through 2020. The line is scheduled to begin passenger service in 2021.

The Metropolitan Council will be the grantee of federal funds. The regional government agency is charged with building the line in partnership with the Minnesota Department of Transportation. Funding is provided by the Federal Transit Administration, the Counties Transit Improvement Board (CTIB), the Hennepin County Regional Railroad Authority (HCRRA), the Metropolitan Council, the State of Minnesota, and the cities of St. Louis Park, Hopkins, Minnetonka, and Eden Prairie.

