

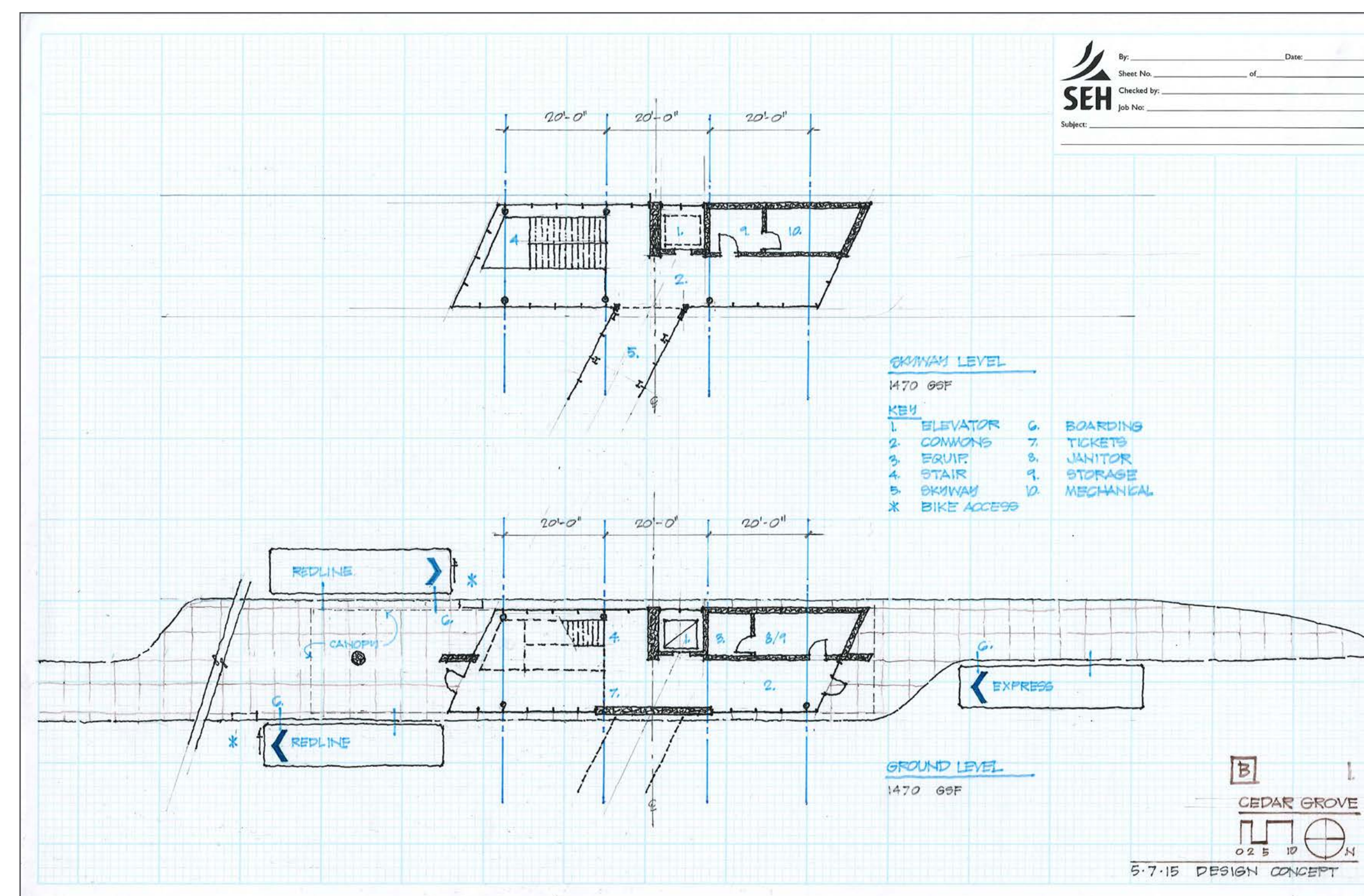
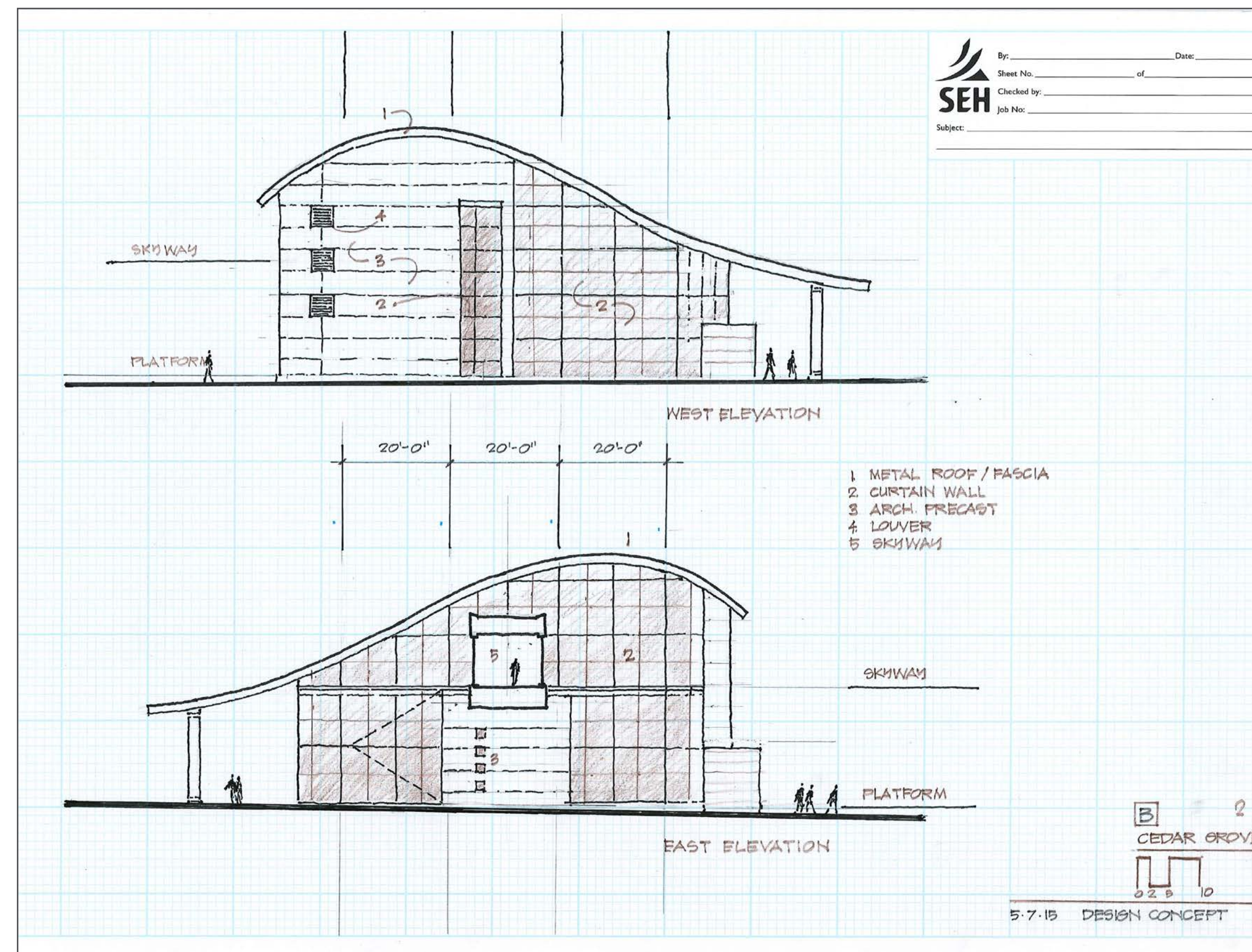
PROPOSED STATION CONCEPTS



NEW STATION FEATURES

- Glass-enclosed skyway across Highway 77
- Stairs and elevators at each end
- Glass enclosed indoor waiting area
- Canopied outdoor waiting area
- Red Line bus stops
- Potential for future use by express and other buses

Concept 1



Concept 2

