

### Project overview

Changes are proposed for the Cedar Grove Transit Station in Eagan that will **improve travel times** for users of the METRO Red Line and some express routes on Highway 77/Cedar Avenue. Today these buses must exit the highway, travel to the existing Cedar Grove station, and then reenter the highway. This trip takes several minutes in each direction, adding significantly to the travel time for Red Line users.

### Proposed Improvements

Design is now beginning on improvements to the station that will add a new passenger platform in the center of Hwy 77 with an enclosed skyway connecting back to the existing station on Nicols Road. When the work is completed, passengers will use the skyway to get to the center platform and buses will be able to get to the new station without leaving the highway.

### Project Partners



### Project Schedule

Concept Design



Early to mid 2015

We are here

Open House #1



May 2015

Detail Design



Mid to late 2015

Open House #2



Fall 2015

Construction Begins



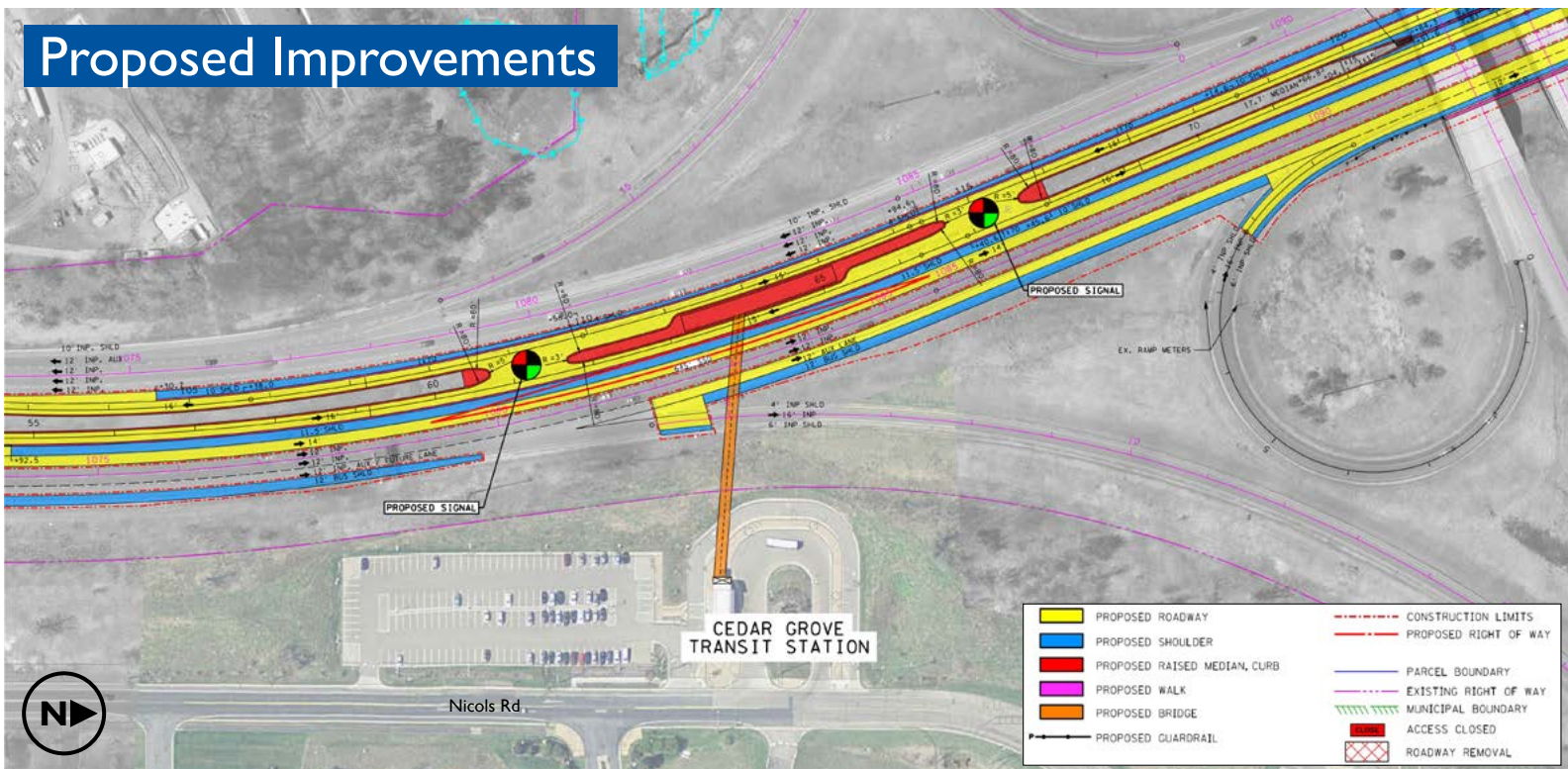
Early 2016

Station Opening



Early 2017

### Proposed Improvements





The new passenger platform will serve both Northbound and Southbound buses. This map shows only the Northbound route for example purposes



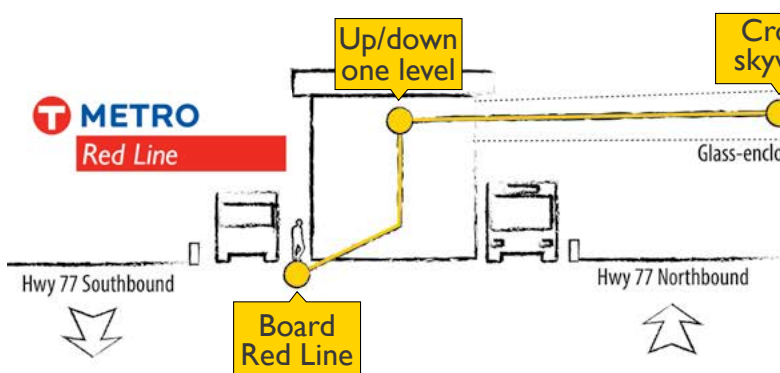
## New station features

- Glass-enclosed skyway across Highway 77
- Stairs and elevators at each end
- Glass enclosed indoor waiting area
- Canopied outdoor waiting area
- Red Line bus stops
- Potential for future use by express and other buses

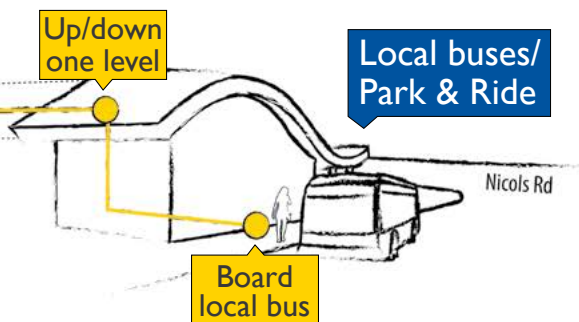
## How will you get to the Red Line?

	Now	Future
Where do Red Line buses stop?	Existing station (Nicols Rd)	New station (Hwy 77 median)
Where do local MVTA buses stop?	Existing station (Nicols Rd)	Existing station (Nicols Rd)
Where do MVTA express buses stop?	Existing station (Nicols Rd)	Potential to use new station in median of Hwy 77
Where do transfers between local and Red Line buses happen?	Existing station (Nicols Rd)	Cross skyway between new Hwy 77 station (Red Line) and existing Nicols Road station (local)

### NEW PASSENGER PLATFORM



### EXISTING STATION



The diagram above does not represent final design and is not to scale. It is for illustrative purposes only.



FOR MORE  
INFORMATION OR  
TO CONTACT US:

**Project Manager**  
Claudius Toussaint

**Phone:** 612-349-7770

**Email:** [claudius.toussaint@metrotransit.org](mailto:claudius.toussaint@metrotransit.org)

**Website:** [metrotransit.org/cedargrovestationimprovements](http://metrotransit.org/cedargrovestationimprovements)