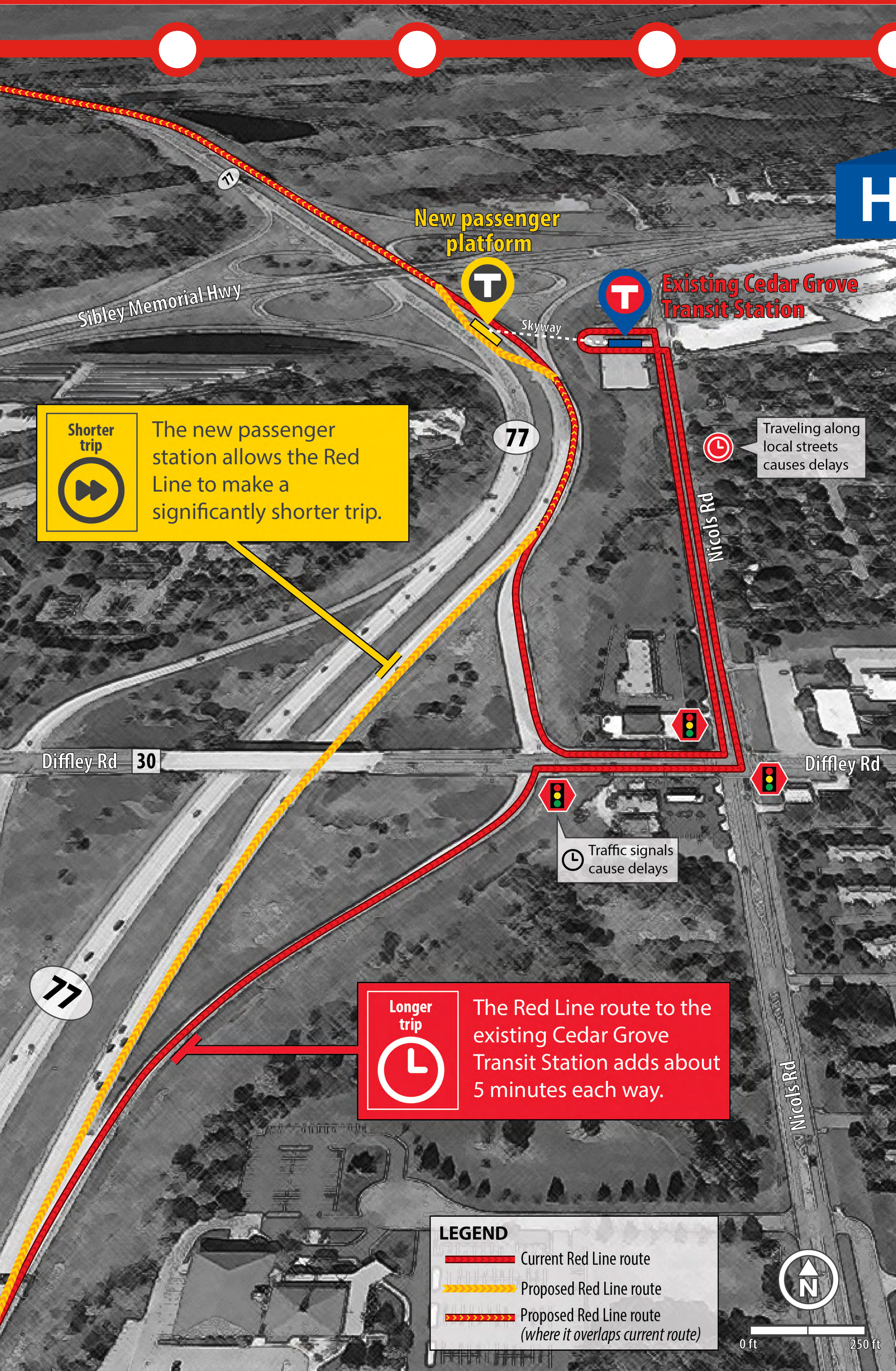
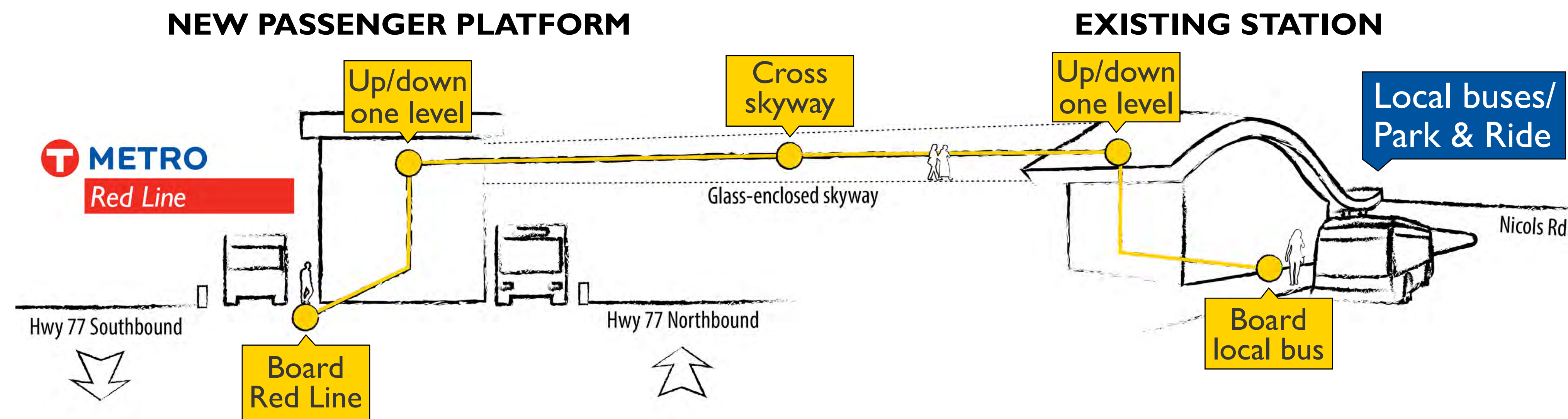


HOW WILL YOUR TRIP CHANGE?



How will you get to the Red Line?

The diagram below does not represent final design and is not to scale. It is for illustrative purposes only.



	Now	Future
Where do Red Line buses stop?	Existing station (Nicols Rd)	New station (Hwy 77 median)
Where do local MVTA buses stop?	Existing station (Nicols Rd)	Existing station (Nicols Rd)
Where do MVTA express buses stop?	Existing station (Nicols Rd)	Potential to use new station in median of Hwy 77
Where do transfers between local and Red Line buses happen?	Existing station (Nicols Rd)	Cross skyway between new Hwy 77 station (Red Line) and existing Nicols Road station (local)

The new passenger platform will serve both Northbound and Southbound buses. This map shows only the Northbound route for example purposes.



Red Line

Cedar Grove Transit Station Improvements