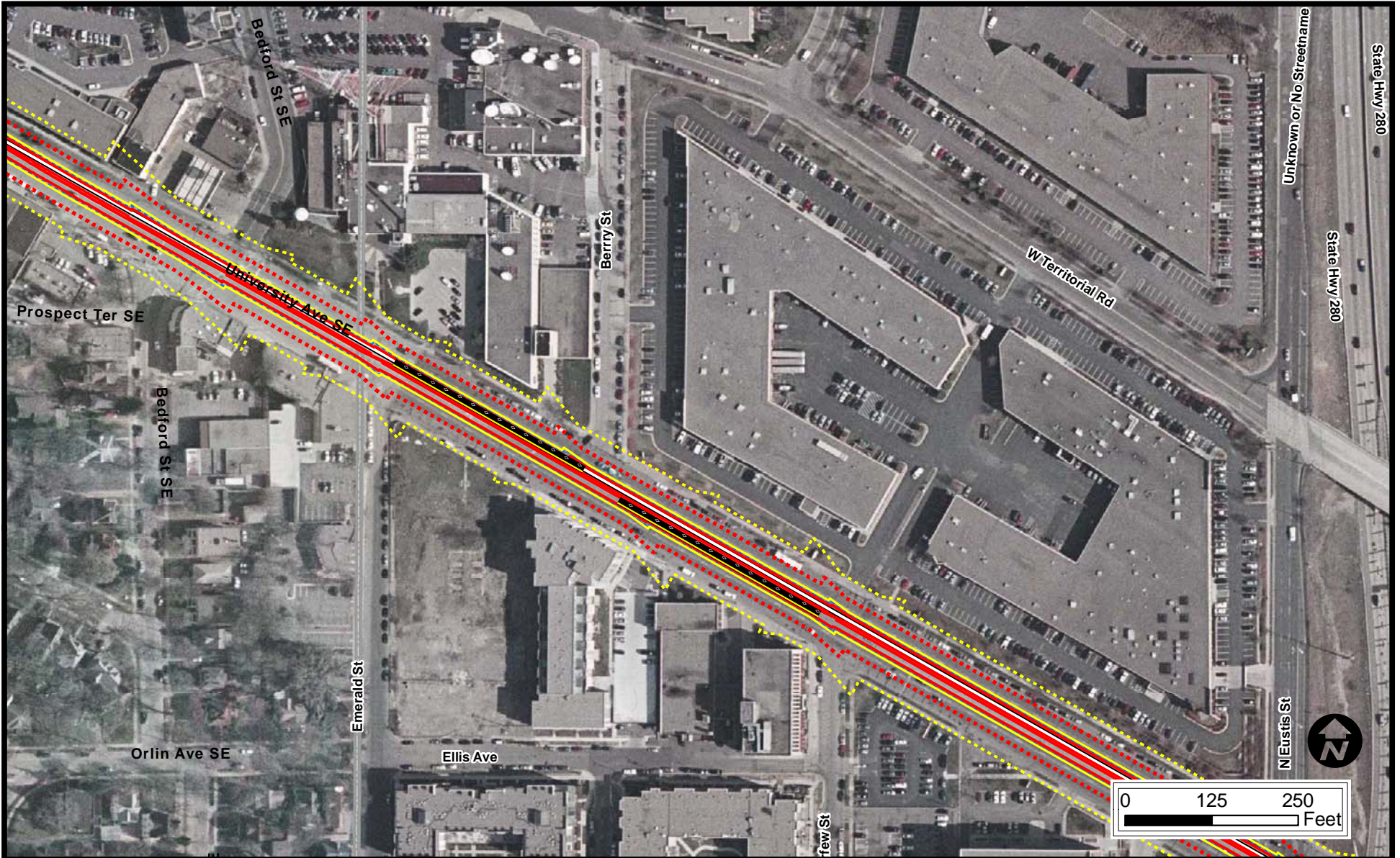


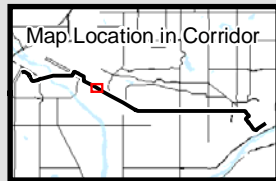
## NOISE CONTOUR FIGURES



- Legend**
- Station Platforms
  - Crossover
  - CCLRT
  - HLRT station
  - HLRT
  - Operations and Maintenance Facility

- Category 1 Moderate Contour
- Category 1 Severe Contour
- Category 2 Moderate Contour
- Category 2 Severe Contour
- Category 3 Moderate Contour
- Category 3 Severe Contour

- Cat 1 Receptor: Moderate Impact
- Note: No Cat 1 Severe Impact
- Cat 2 Receptor: Moderate Impact
- Cat 2 Receptor: Severe Impact
- Cat 3 Receptor: Moderate Impact
- Note: No Cat 3 Severe Impact



**32**  
**FTA Detailed**  
**Noise Assessment**  
**Based on SEL = 84 dBA**

---

Final Environmental Impact Statement

---

**Metropolitan Council**      Central Corridor  
 Light Rail Transit

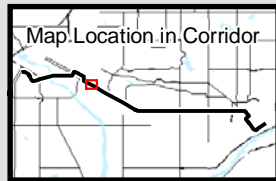




- Legend**
- Station Platforms
  - Crossover
  - CCLRT
  - HLRT station
  - HLRT
  - Operations and Maintenance Facility

- Category 1 Moderate Contour
- Category 1 Severe Contour
- Category 2 Moderate Contour
- Category 2 Severe Contour
- Category 3 Moderate Contour
- Category 3 Severe Contour

- Cat 1 Receptor: Moderate Impact
- Note: No Cat 1 Severe Impact
- Cat 2 Receptor: Moderate Impact
- Cat 2 Receptor: Severe Impact
- Cat 3 Receptor: Moderate Impact
- Note: No Cat 3 Severe Impact



**33**  
**FTA Detailed**  
**Noise Assessment**  
**Based on SEL = 84 dBA**

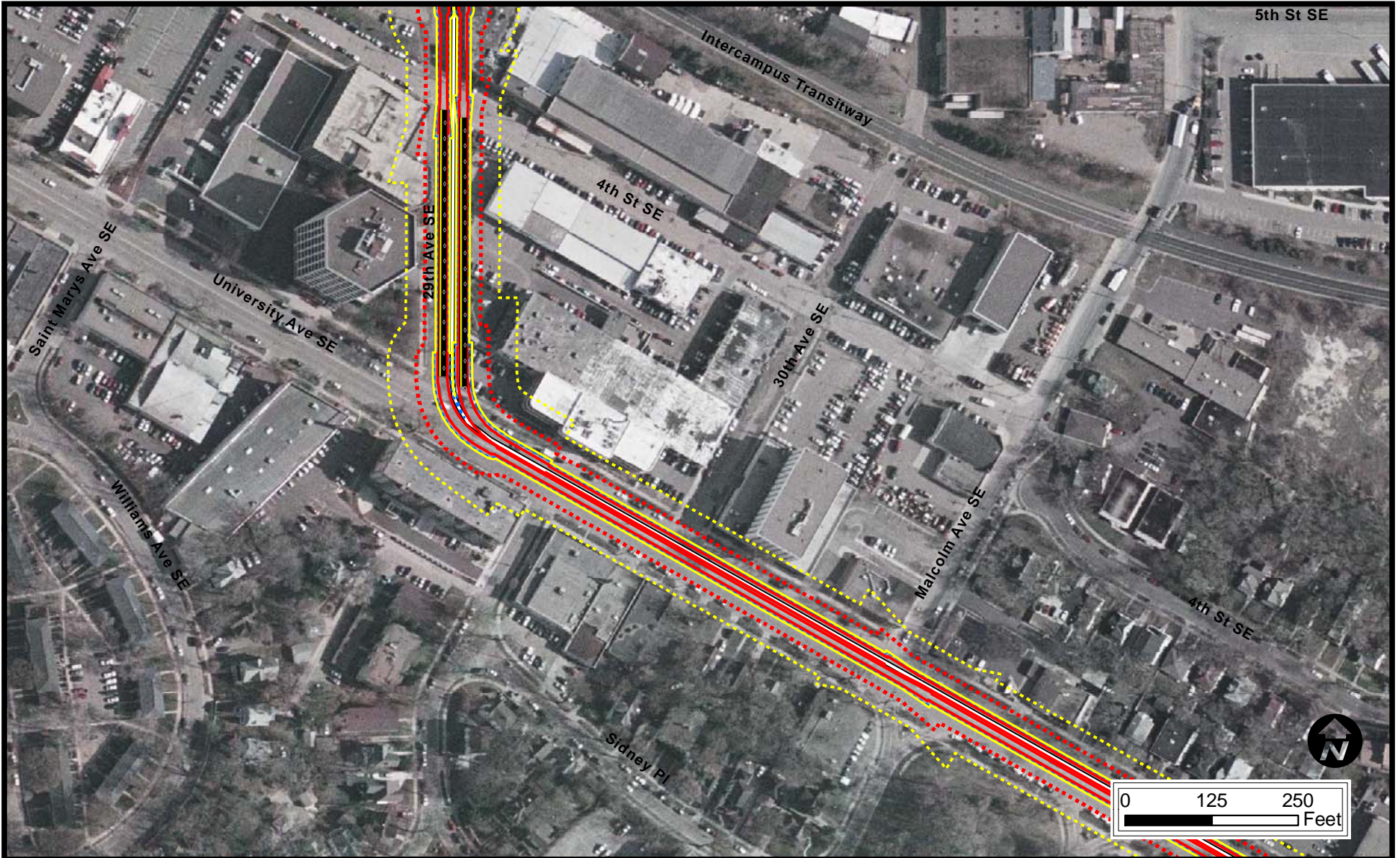
---

Final Environmental Impact Statement

---

**Metropolitan Council**      Central Corridor  
 Light Rail Transit

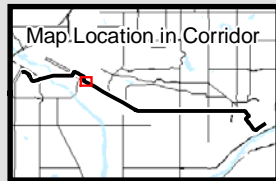




- Legend**
- Station Platforms
  - Crossover
  - CCLRT
  - HLRT station
  - HLRT
  - Operations and Maintenance Facility

- Category 1 Moderate Contour
- Category 1 Severe Contour
- Category 2 Moderate Contour
- Category 2 Severe Contour
- Category 3 Moderate Contour
- Category 3 Severe Contour

- Cat 1 Receptor: Moderate Impact
- Note: No Cat 1 Severe Impact
- Cat 2 Receptor: Moderate Impact
- Cat 2 Receptor: Severe Impact
- Cat 3 Receptor: Moderate Impact
- Note: No Cat 3 Severe Impact

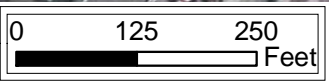
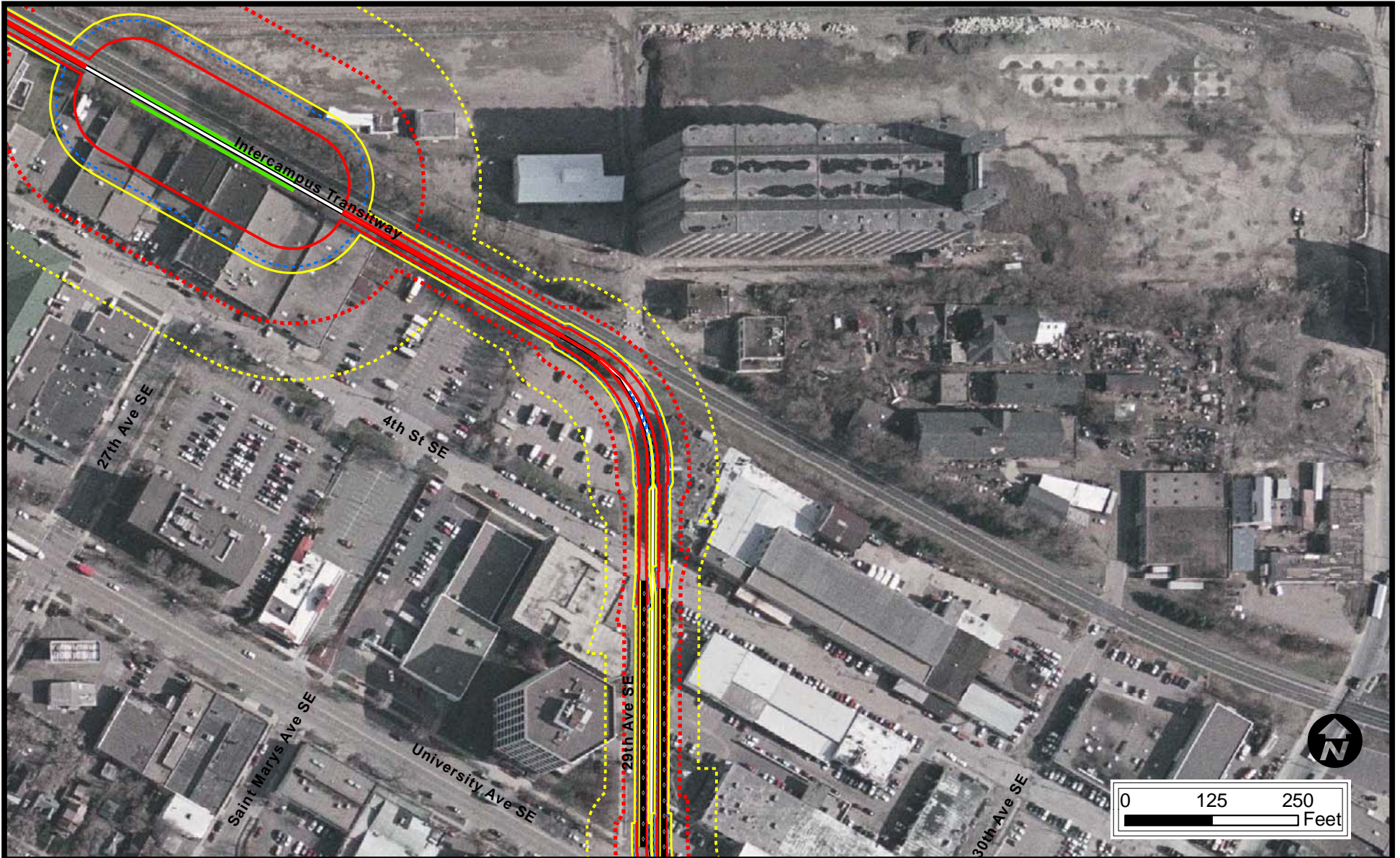


**34**  
**FTA Detailed**  
**Noise Assessment**  
**Based on SEL = 84 dBA**

Final Environmental Impact Statement

**Metropolitan Council** Central Corridor  
 Light Rail Transit

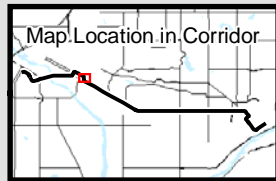




- Legend**
- Station Platforms
  - Crossover
  - CCLRT
  - HLRT station
  - HLRT
  - Operations and Maintenance Facility

- Category 1 Moderate Contour
- Category 1 Severe Contour
- Category 2 Moderate Contour
- Category 2 Severe Contour
- Category 3 Moderate Contour
- Category 3 Severe Contour

- Cat 1 Receptor: Moderate Impact
- Note: No Cat 1 Severe Impact
- Cat 2 Receptor: Moderate Impact
- Cat 2 Receptor: Severe Impact
- Cat 3 Receptor: Moderate Impact
- Note: No Cat 3 Severe Impact



**35**  
**FTA Detailed**  
**Noise Assessment**  
**Based on SEL = 84 dBA**

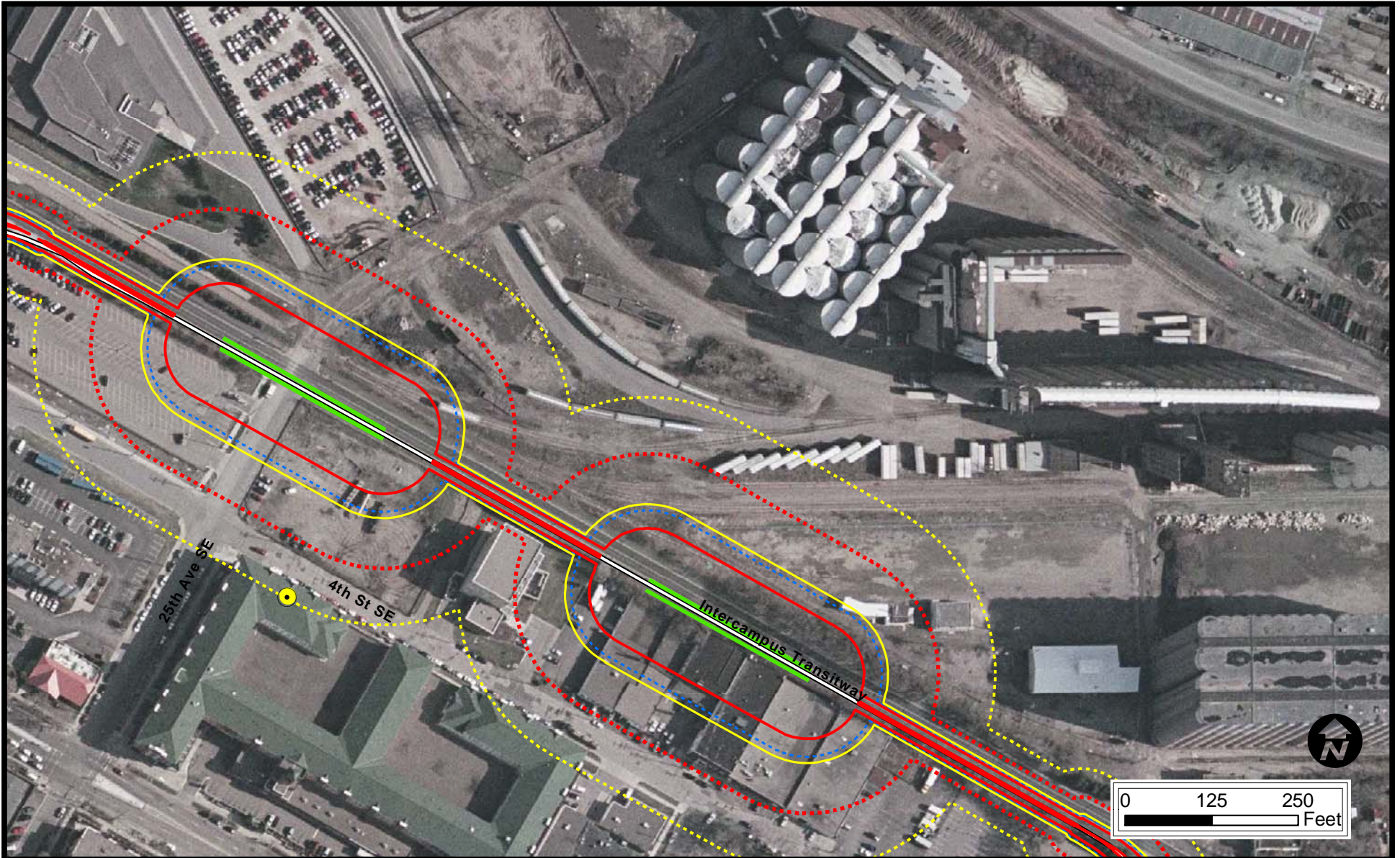
---

Final Environmental Impact Statement

---

**Metropolitan Council**      Central Corridor  
 Light Rail Transit





- Legend**
- Station Platforms
  - Crossover
  - CCLRT
  - HLRT station
  - HLRT
  - Operations and Maintenance Facility

- Category 1 Moderate Contour
- Category 1 Severe Contour
- Category 2 Moderate Contour
- Category 2 Severe Contour
- Category 3 Moderate Contour
- Category 3 Severe Contour

- Cat 1 Receptor: Moderate Impact
- Note: No Cat 1 Severe Impact
- Cat 2 Receptor: Moderate Impact
- Cat 2 Receptor: Severe Impact
- Cat 3 Receptor: Moderate Impact
- Note: No Cat 3 Severe Impact

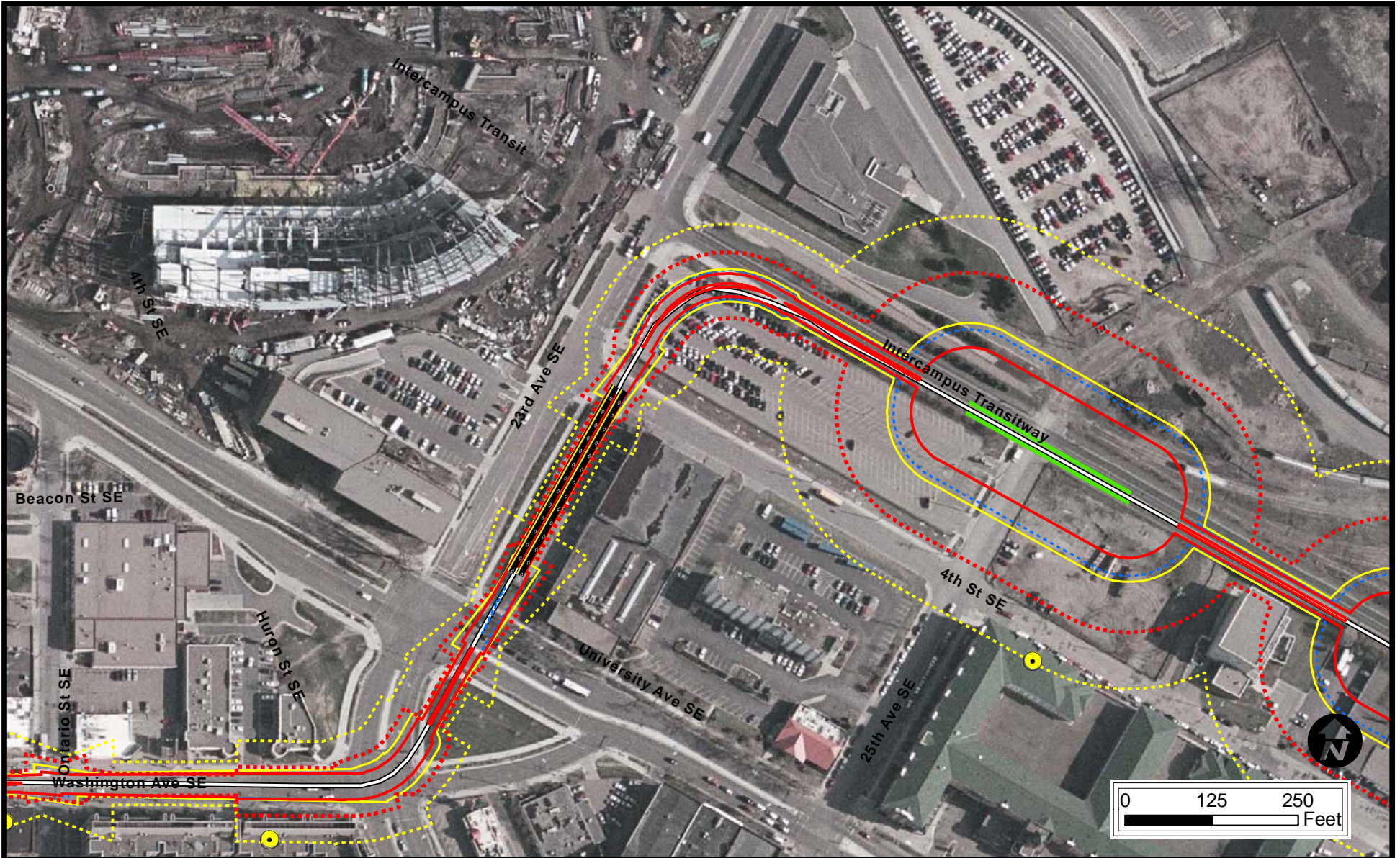


# 36

## FTA Detailed Noise Assessment Based on SEL = 84 dBA

Final Environmental Impact Statement

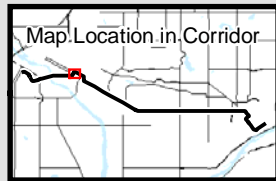




- Legend**
- Station Platforms
  - Crossover
  - CCLRT
  - HLRT station
  - HLRT
  - Operations and Maintenance Facility

- Category 1 Moderate Contour
- Category 1 Severe Contour
- Category 2 Moderate Contour
- Category 2 Severe Contour
- Category 3 Moderate Contour
- Category 3 Severe Contour

- Cat 1 Receptor: Moderate Impact
- Note: No Cat 1 Severe Impact
- Cat 2 Receptor: Moderate Impact
- Cat 2 Receptor: Severe Impact
- Cat 3 Receptor: Moderate Impact
- Note: No Cat 3 Severe Impact



**37**  
**FTA Detailed**  
**Noise Assessment**  
**Based on SEL = 84 dBA**

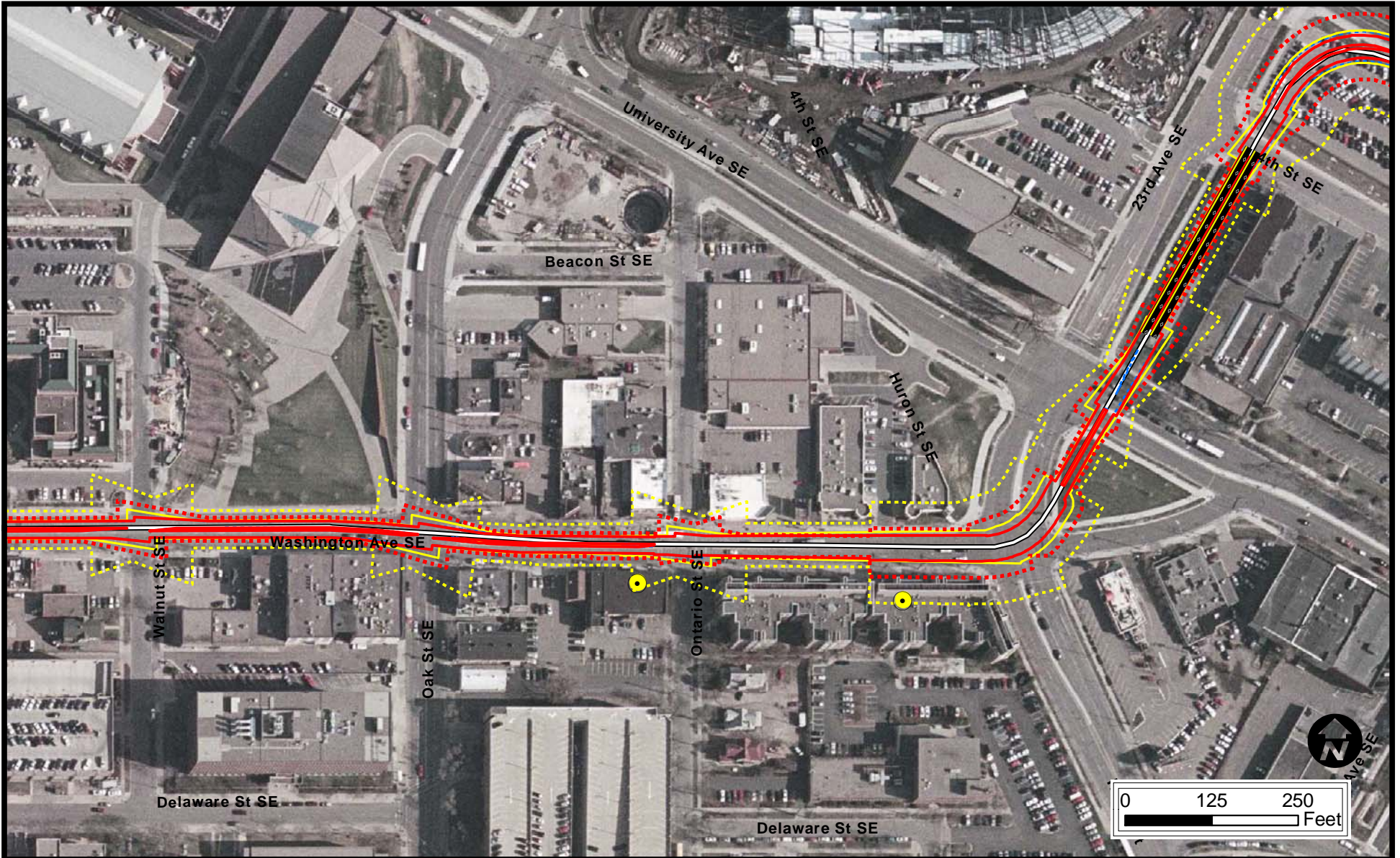
---

Final Environmental Impact Statement

---

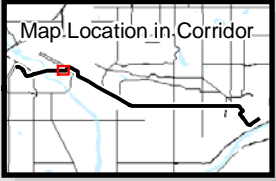
**Metropolitan Council** Central Corridor  
Light Rail Transit





**Legend**

	Station Platforms		Category 1 Moderate Contour		Cat 1 Receptor: Moderate Impact
	Crossover		Category 1 Severe Contour		Note: No Cat 1 Severe Impact
	CCLRT		Category 2 Moderate Contour		Cat 2 Receptor: Moderate Impact
	HLRT station		Category 2 Severe Contour		Cat 2 Receptor: Severe Impact
	HLRT		Category 3 Moderate Contour		Cat 3 Receptor: Moderate Impact
	Operations and Maintenance Facility		Category 3 Severe Contour		Note: No Cat 3 Severe Impact

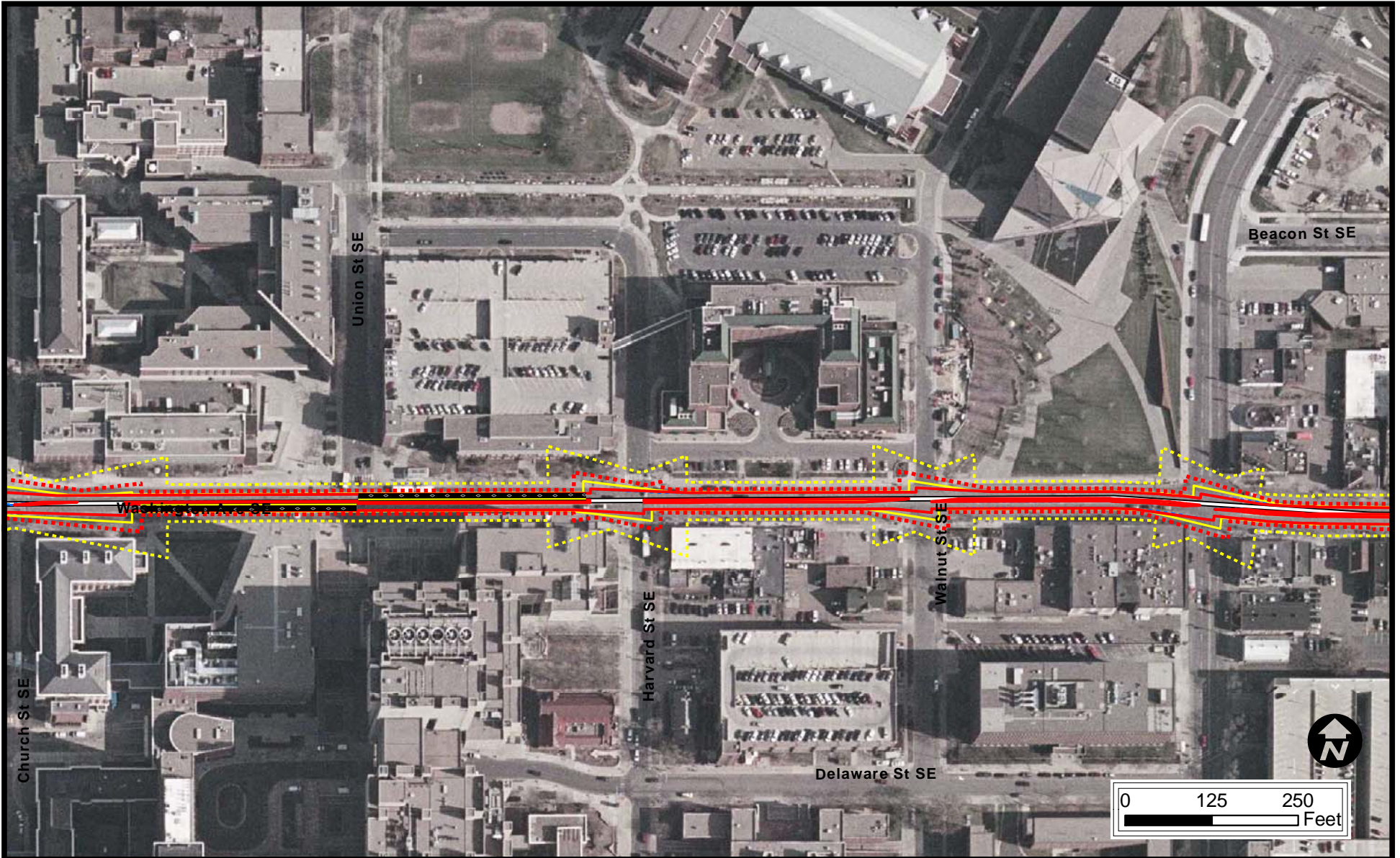


**38**  
**FTA Detailed**  
**Noise Assessment**  
**Based on SEL = 84 dBA**

Final Environmental Impact Statement

**Metropolitan Council** Central Corridor  
 Light Rail Transit

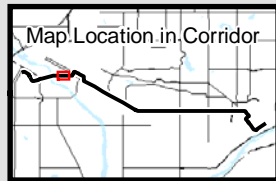




- Legend**
- Station Platforms
  - Crossover
  - CCLRT
  - HLRT station
  - HLRT
  - Operations and Maintenance Facility

- Category 1 Moderate Contour
- Category 1 Severe Contour
- Category 2 Moderate Contour
- Category 2 Severe Contour
- Category 3 Moderate Contour
- Category 3 Severe Contour

- Cat 1 Receptor: Moderate Impact
- Note: No Cat 1 Severe Impact
- Cat 2 Receptor: Moderate Impact
- Cat 2 Receptor: Severe Impact
- Cat 3 Receptor: Moderate Impact
- Note: No Cat 3 Severe Impact



**39**  
**FTA Detailed**  
**Noise Assessment**  
**Based on SEL = 84 dBA**

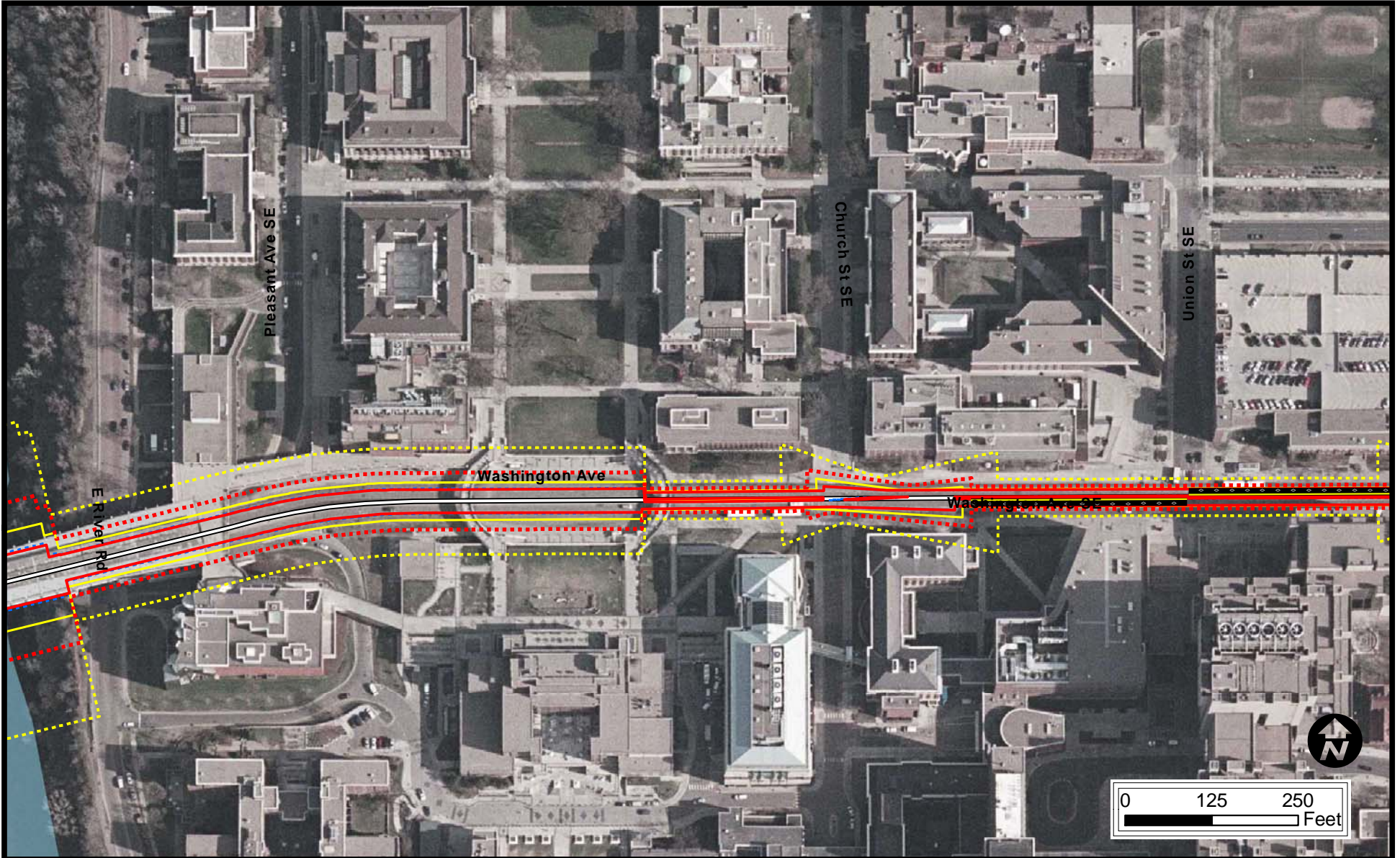
---

Final Environmental Impact Statement

---

**Metropolitan Council**      Central Corridor  
 Light Rail Transit



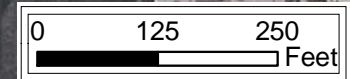


**Legend**

- Station Platforms
- Crossover
- CCLRT
- HLRT station
- HLRT
- Operations and Maintenance Facility

- Category 1 Moderate Contour
- Category 1 Severe Contour
- Category 2 Moderate Contour
- Category 2 Severe Contour
- Category 3 Moderate Contour
- Category 3 Severe Contour

- Cat 1 Receptor: Moderate Impact
- Note: No Cat 1 Severe Impact
- Cat 2 Receptor: Moderate Impact
- Cat 2 Receptor: Severe Impact
- Cat 3 Receptor: Moderate Impact
- Note: No Cat 3 Severe Impact



**40**  
**FTA Detailed**  
**Noise Assessment**  
**Based on SEL = 84 dBA**

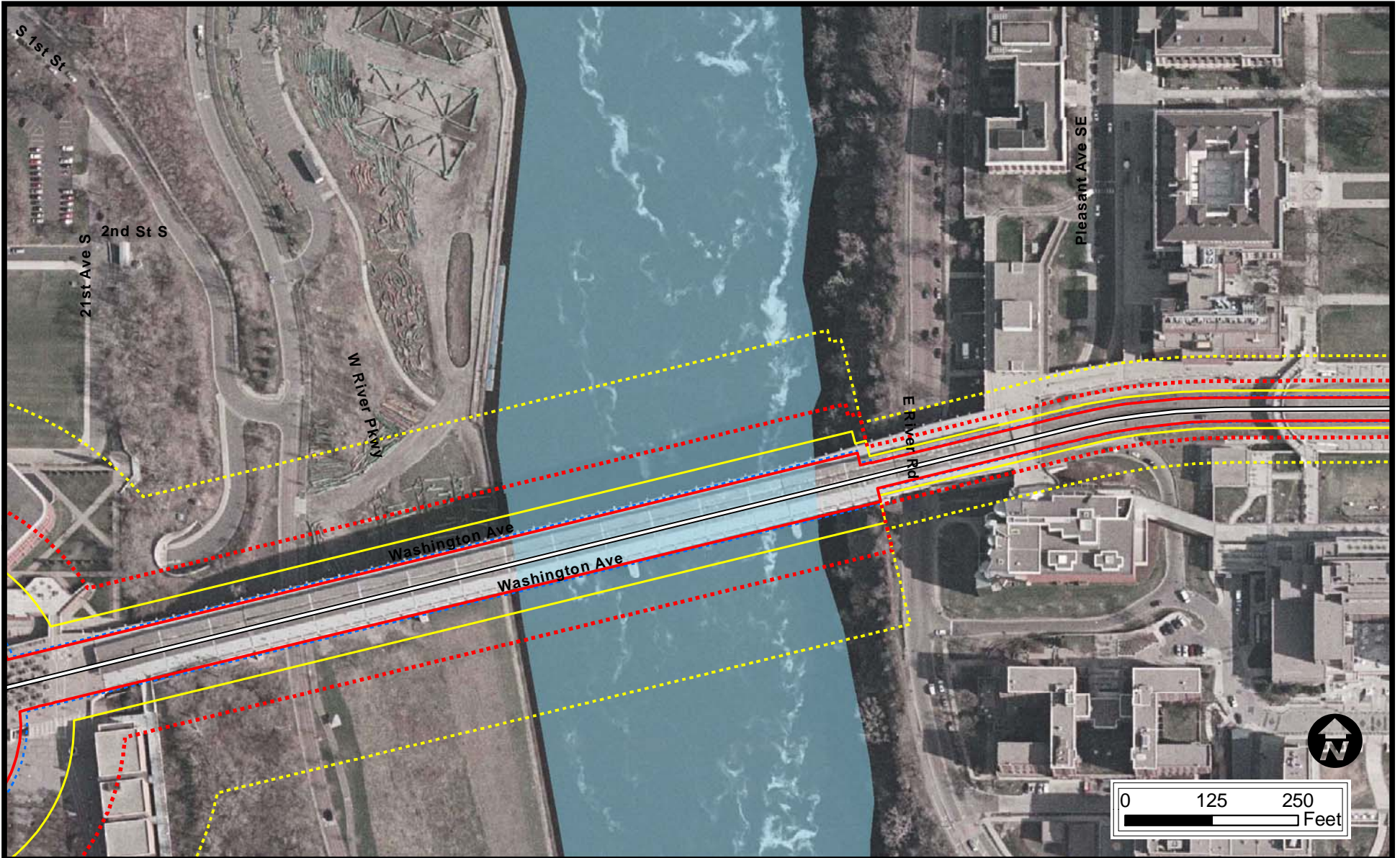
---

Final Environmental Impact Statement

---

**Metropolitan Council**      Central Corridor  
 Light Rail Transit

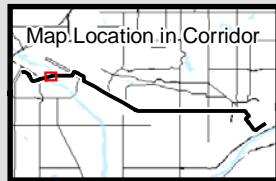




- Legend**
- Station Platforms
  - Crossover
  - CCLRT
  - HLRT station
  - HLRT
  - Operations and Maintenance Facility

- Category 1 Moderate Contour
- Category 1 Severe Contour
- Category 2 Moderate Contour
- Category 2 Severe Contour
- Category 3 Moderate Contour
- Category 3 Severe Contour

- Cat 1 Receptor: Moderate Impact
- Note: No Cat 1 Severe Impact
- Cat 2 Receptor: Moderate Impact
- Cat 2 Receptor: Severe Impact
- Cat 3 Receptor: Moderate Impact
- Note: No Cat 3 Severe Impact

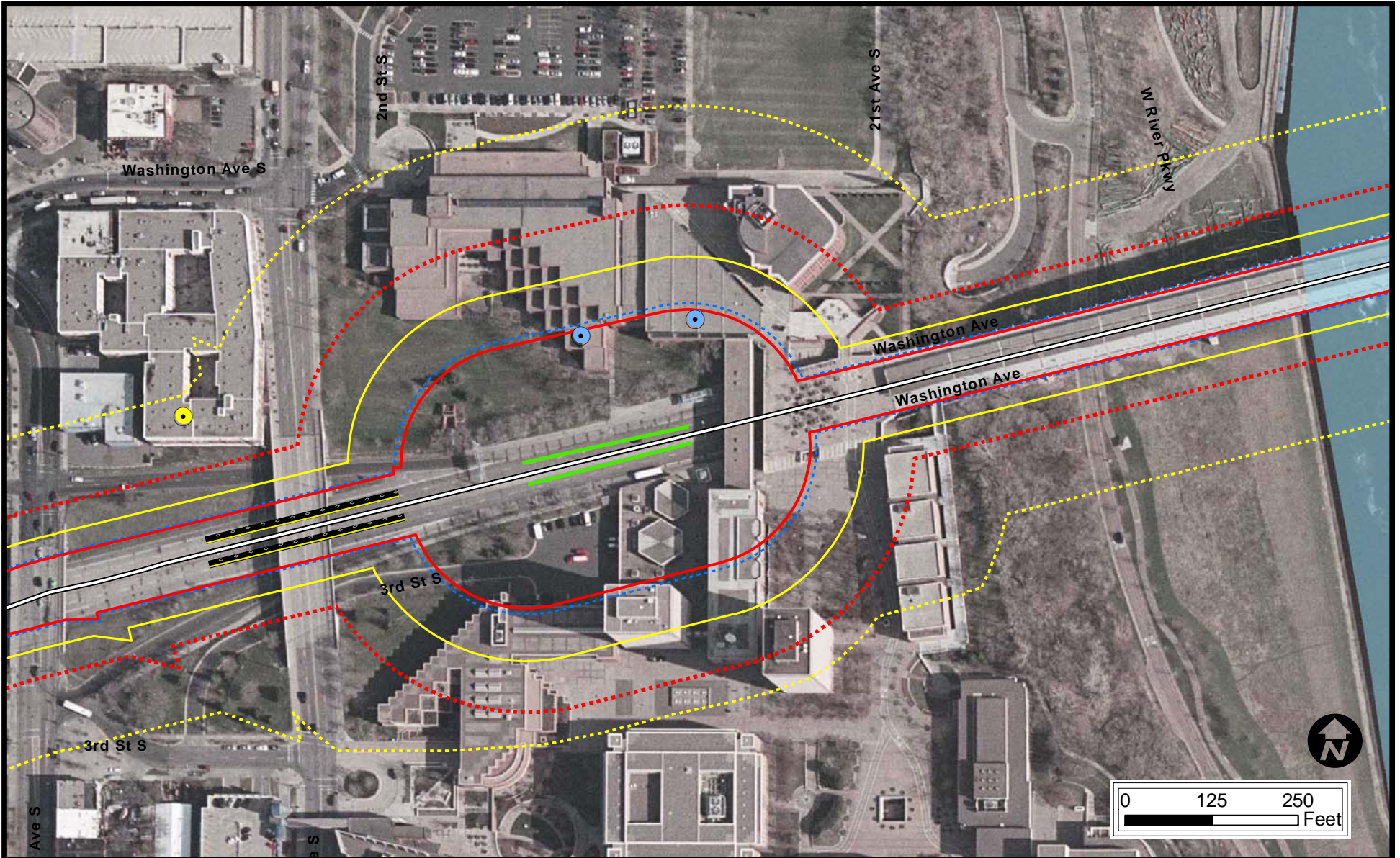


**41**  
**FTA Detailed**  
**Noise Assessment**  
**Based on SEL = 84 dBA**

Final Environmental Impact Statement

**Metropolitan Council** Central Corridor  
 Light Rail Transit

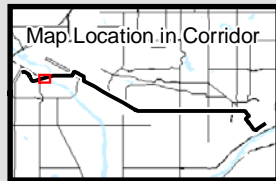




- Legend**
- Station Platforms
  - Crossover
  - CCLRT
  - HLRT station
  - HLRT
  - Operations and Maintenance Facility

- Category 1 Moderate Contour
- Category 1 Severe Contour
- Category 2 Moderate Contour
- Category 2 Severe Contour
- Category 3 Moderate Contour
- Category 3 Severe Contour

- Cat 1 Receptor: Moderate Impact
- Note: No Cat 1 Severe Impact
- Cat 2 Receptor: Moderate Impact
- Cat 2 Receptor: Severe Impact
- Cat 3 Receptor: Moderate Impact
- Note: No Cat 3 Severe Impact



**42**  
**FTA Detailed**  
**Noise Assessment**  
**Based on SEL = 84 dBA**

Final Environmental Impact Statement

**Metropolitan Council** Central Corridor  
 Light Rail Transit

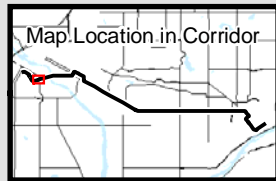




- Legend**
- Station Platforms
  - Crossover
  - CCLRT
  - HLRT station
  - HLRT
  - Operations and Maintenance Facility

- Category 1 Moderate Contour
- Category 1 Severe Contour
- Category 2 Moderate Contour
- Category 2 Severe Contour
- Category 3 Moderate Contour
- Category 3 Severe Contour

- Cat 1 Receptor: Moderate Impact
- Note: No Cat 1 Severe Impact
- Cat 2 Receptor: Moderate Impact
- Cat 2 Receptor: Severe Impact
- Cat 3 Receptor: Moderate Impact
- Note: No Cat 3 Severe Impact

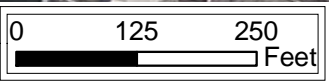
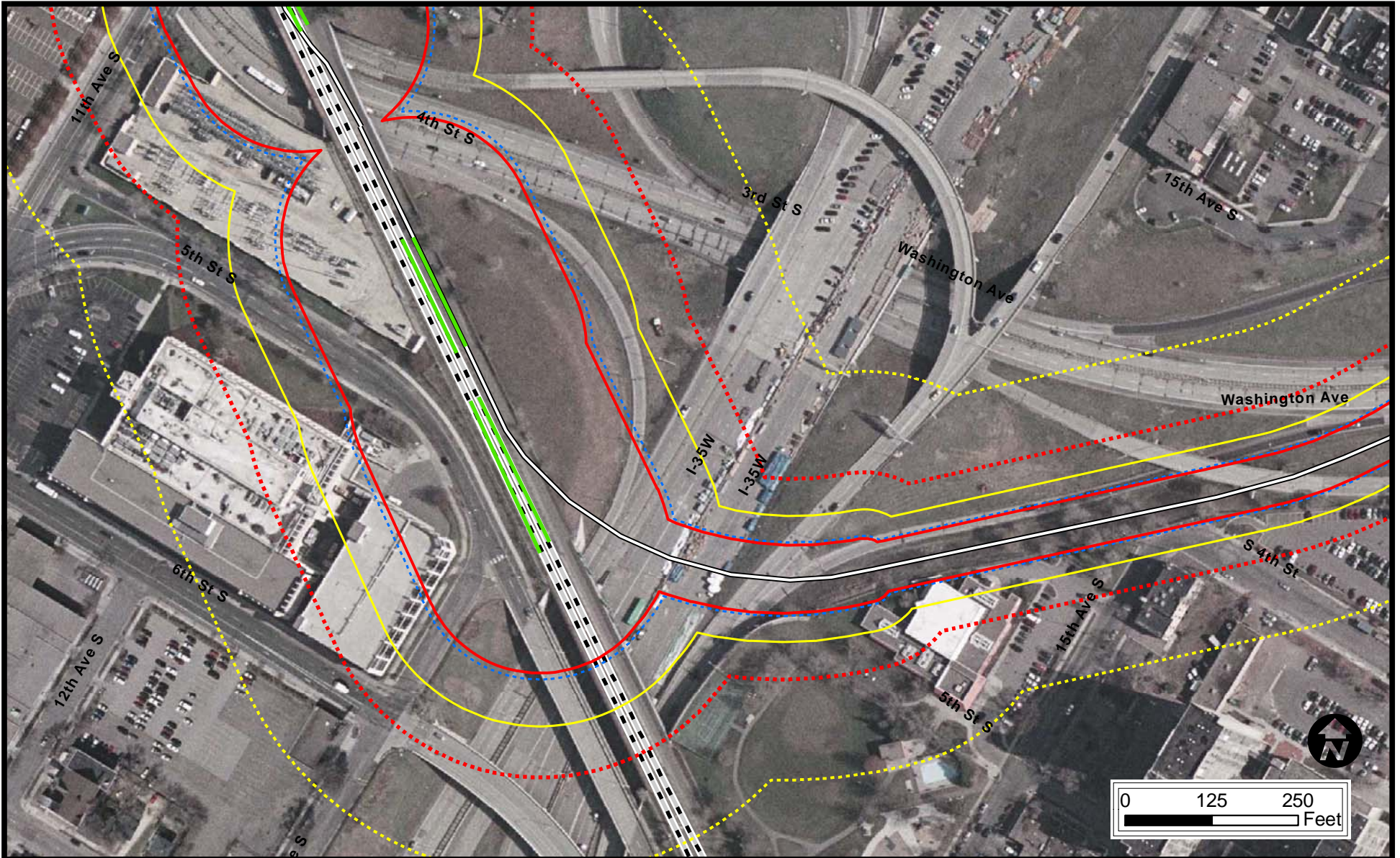


**43**  
**FTA Detailed**  
**Noise Assessment**  
**Based on SEL = 84 dBA**

Final Environmental Impact Statement

**Metropolitan Council** Central Corridor  
 Light Rail Transit



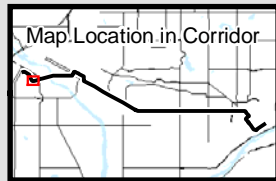


**Legend**

- Station Platforms
- Crossover
- CCLRT
- HLRT station
- HLRT
- Operations and Maintenance Facility

- Category 1 Moderate Contour
- Category 1 Severe Contour
- Category 2 Moderate Contour
- Category 2 Severe Contour
- Category 3 Moderate Contour
- Category 3 Severe Contour

- Cat 1 Receptor: Moderate Impact
- Note: No Cat 1 Severe Impact
- Cat 2 Receptor: Moderate Impact
- Cat 2 Receptor: Severe Impact
- Cat 3 Receptor: Moderate Impact
- Note: No Cat 3 Severe Impact



# 44

## FTA Detailed Noise Assessment Based on SEL = 84 dBA

Final Environmental Impact Statement

**Metropolitan Council** Central Corridor  
Light Rail Transit

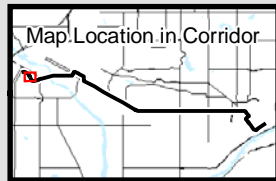




- Legend**
- Station Platforms
  - Crossover
  - CCLRT
  - HLRT station
  - HLRT
  - Operations and Maintenance Facility

- Category 1 Moderate Contour
- Category 1 Severe Contour
- Category 2 Moderate Contour
- Category 2 Severe Contour
- Category 3 Moderate Contour
- Category 3 Severe Contour

- Cat 1 Receptor: Moderate Impact
- Note: No Cat 1 Severe Impact
- Cat 2 Receptor: Moderate Impact
- Cat 2 Receptor: Severe Impact
- Cat 3 Receptor: Moderate Impact
- Note: No Cat 3 Severe Impact

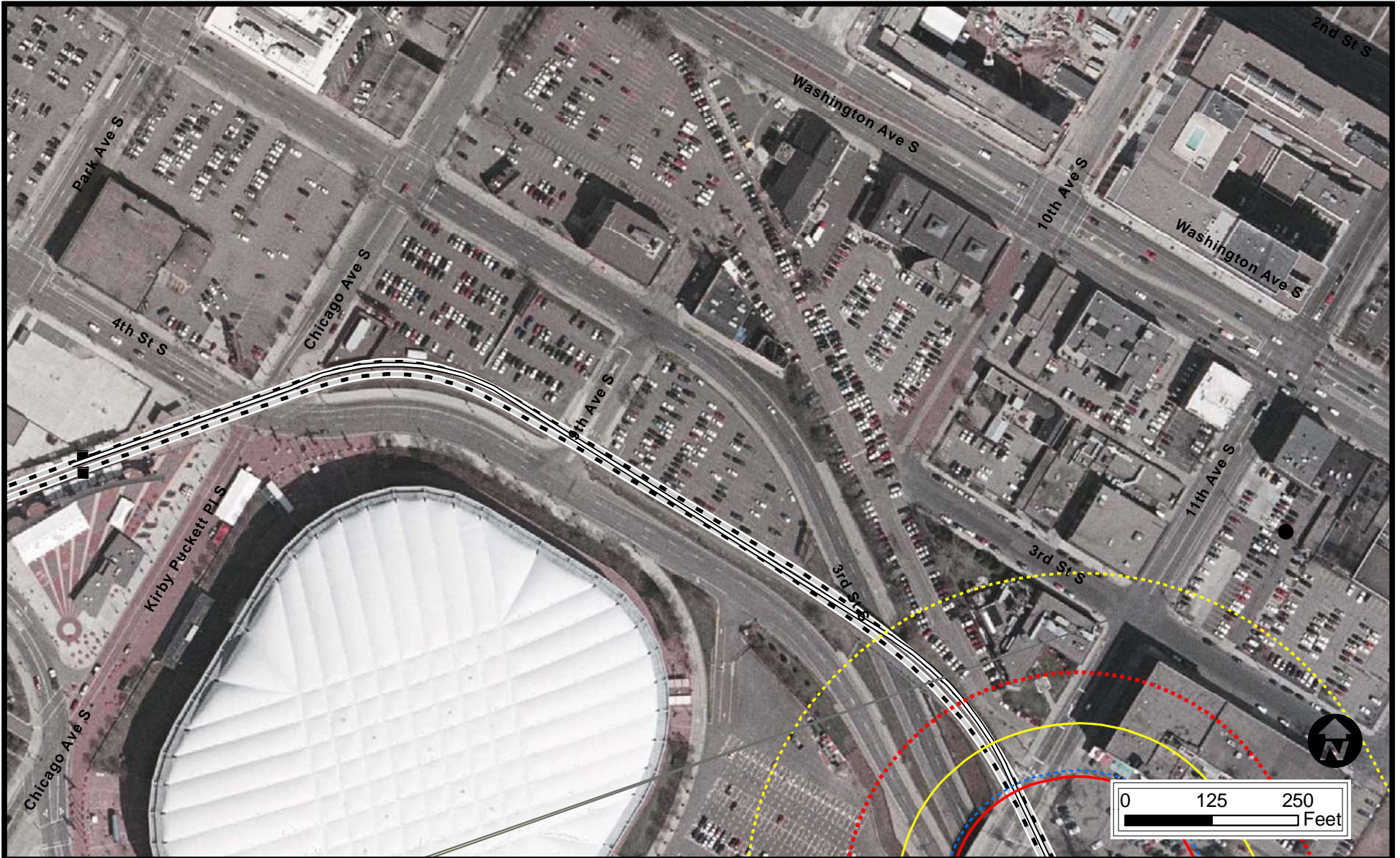


**45**  
**FTA Detailed**  
**Noise Assessment**  
**Based on SEL = 84 dBA**

Final Environmental Impact Statement

**Metropolitan Council**      Central Corridor  
 Light Rail Transit



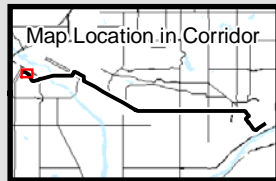


**Legend**

- Station Platforms
- Crossover
- CCLRT
- HLRT station
- HLRT
- Operations and Maintenance Facility

- Category 1 Moderate Contour
- Category 1 Severe Contour
- Category 2 Moderate Contour
- Category 2 Severe Contour
- Category 3 Moderate Contour
- Category 3 Severe Contour

- Cat 1 Receptor: Moderate Impact
- Note: No Cat 1 Severe Impact
- Cat 2 Receptor: Moderate Impact
- Cat 2 Receptor: Severe Impact
- Cat 3 Receptor: Moderate Impact
- Note: No Cat 3 Severe Impact



# 46

## FTA Detailed Noise Assessment Based on SEL = 84 dBA

Final Environmental Impact Statement

**Metropolitan Council** Central Corridor  
Light Rail Transit

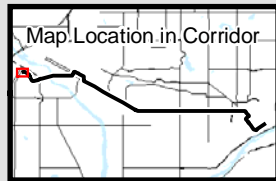




- Legend**
- Station Platforms
  - Crossover
  - CCLRT
  - HLRT station
  - HLRT
  - Operations and Maintenance Facility

- Category 1 Moderate Contour
- Category 1 Severe Contour
- Category 2 Moderate Contour
- Category 2 Severe Contour
- Category 3 Moderate Contour
- Category 3 Severe Contour

- Cat 1 Receptor: Moderate Impact
- Note: No Cat 1 Severe Impact
- Cat 2 Receptor: Moderate Impact
- Cat 2 Receptor: Severe Impact
- Cat 3 Receptor: Moderate Impact
- Note: No Cat 3 Severe Impact



**47**  
**FTA Detailed**  
**Noise Assessment**  
**Based on SEL = 84 dBA**

---

Final Environmental Impact Statement

---

**Metropolitan Council**      Central Corridor  
 Light Rail Transit