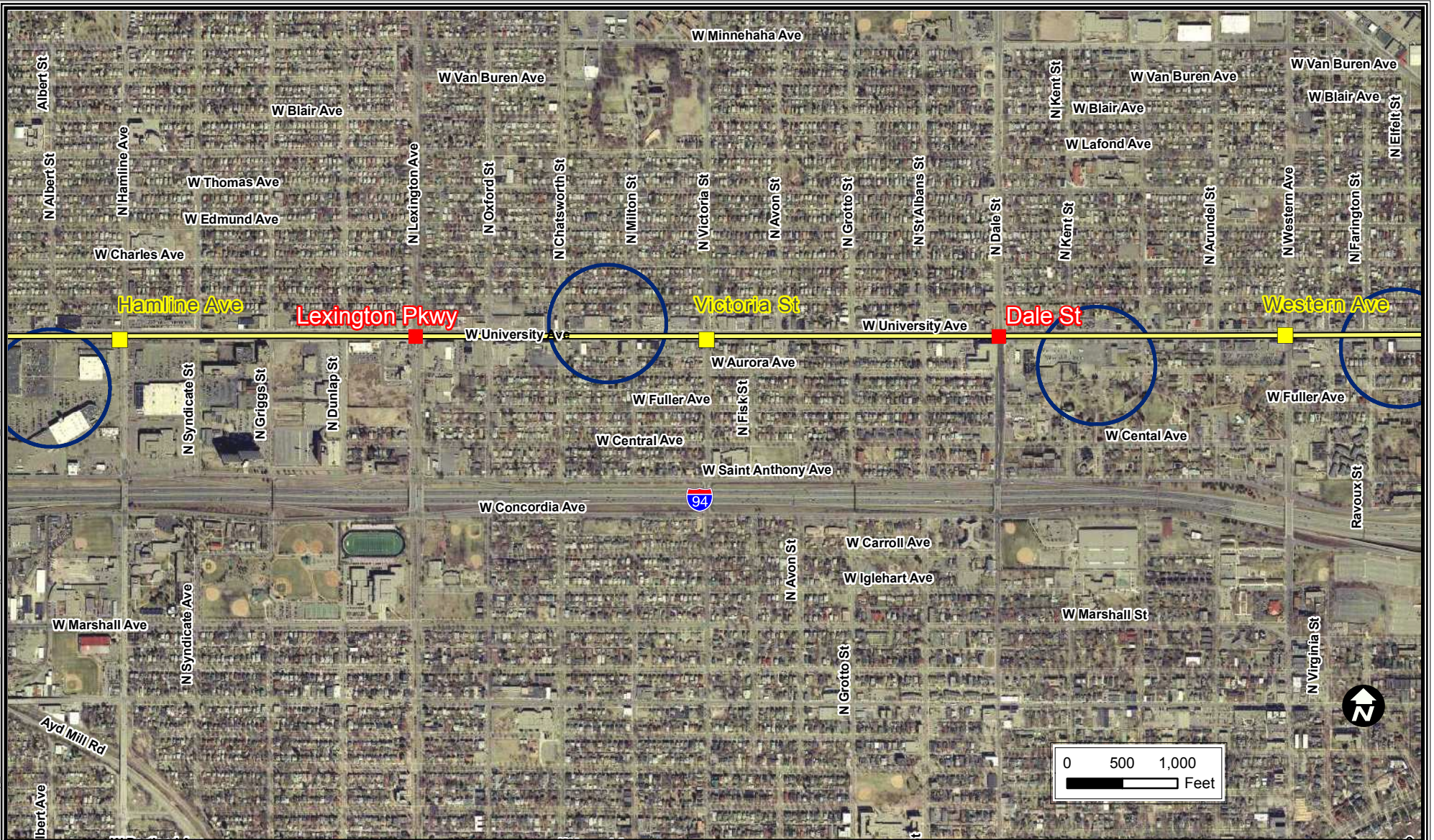


Map Document: (N:\GIS\Proj\MetCouncil\65891\map\_docs\mxd\SD\DEIS\CH2\_Alternatives\Fig2-6\_FutureStations\_0326108\_cs.mxd, 4/28/2008 - csers



**Legend**

- DEIS Station
- SDEIS Alignment\*
- Future infill station
- Traction Power Substation  
General vicinity: .1 mi radius

\*Note: DEIS and SDEIS alignment are identical in this area.

Figure 2-6

Future Infill Stations  
Hamline - Victoria - Western



Central Corridor  
Light Rail Transit