



Business Advisory Committee: February 1, 2022



Brooklyn Park | Crystal | Robbinsdale | Golden Valley | Minneapolis



Today's Topics

- Draft Report Comment Overview
- Anti-Displacement Working Group Update



Approve December 2021 Meeting Summary



One New Co-Chair Selection

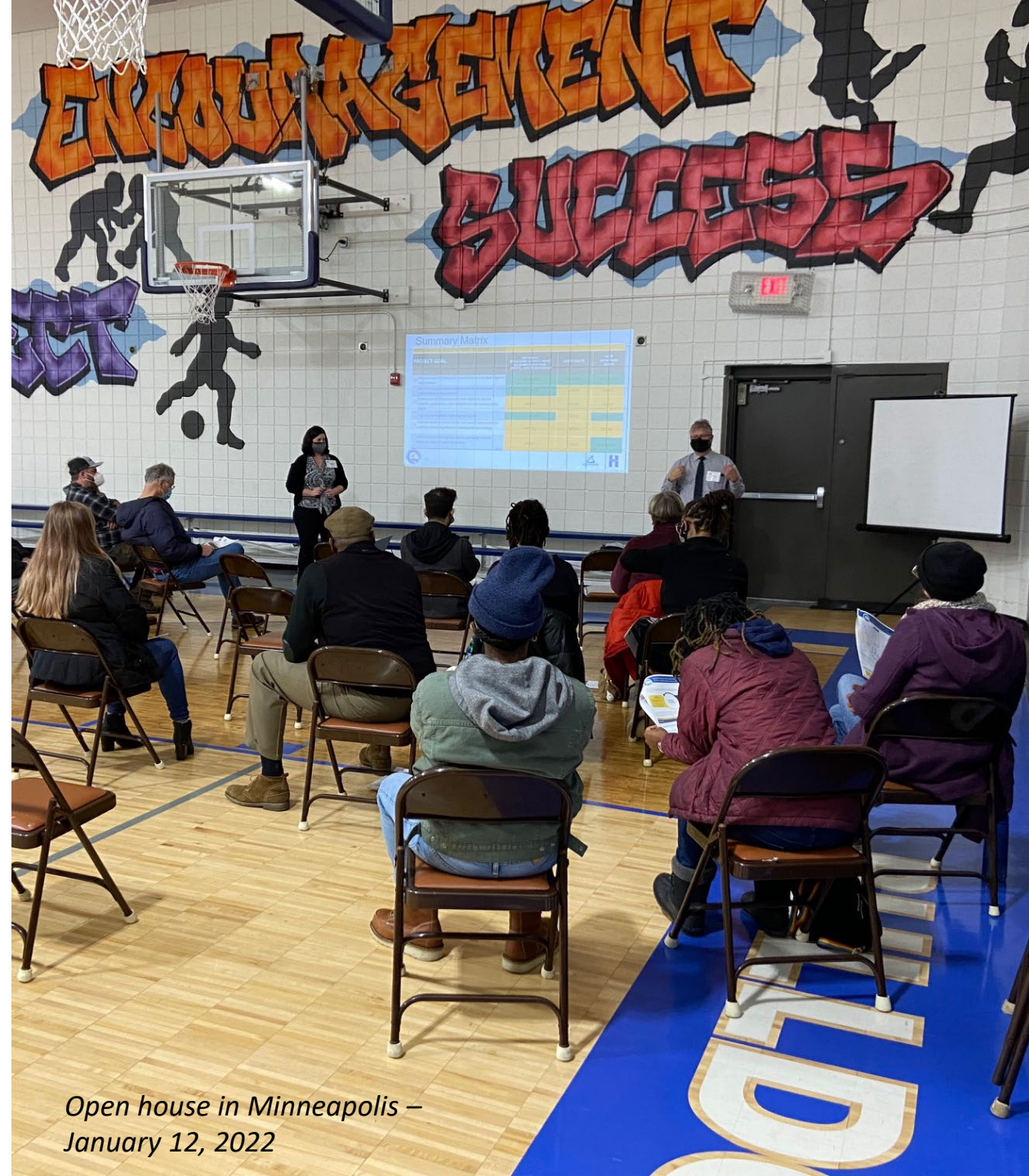


Draft Report Comment Overview



Comment Period Overview (Dec 13-Jan 25)

- Comment Form: 132 responses
- Emailed Comments: 13
- Agency Comment Letters: 5
(Minneapolis, Robbinsdale, Crystal, Brooklyn Park, and Maple Grove)
- Interactive Map Comments: 296 (during the comment period)
- Open House Comments: 55 comments
 - Meetings were held in Minneapolis, Robbinsdale, Crystal, Brooklyn Park, and 2 virtual meetings

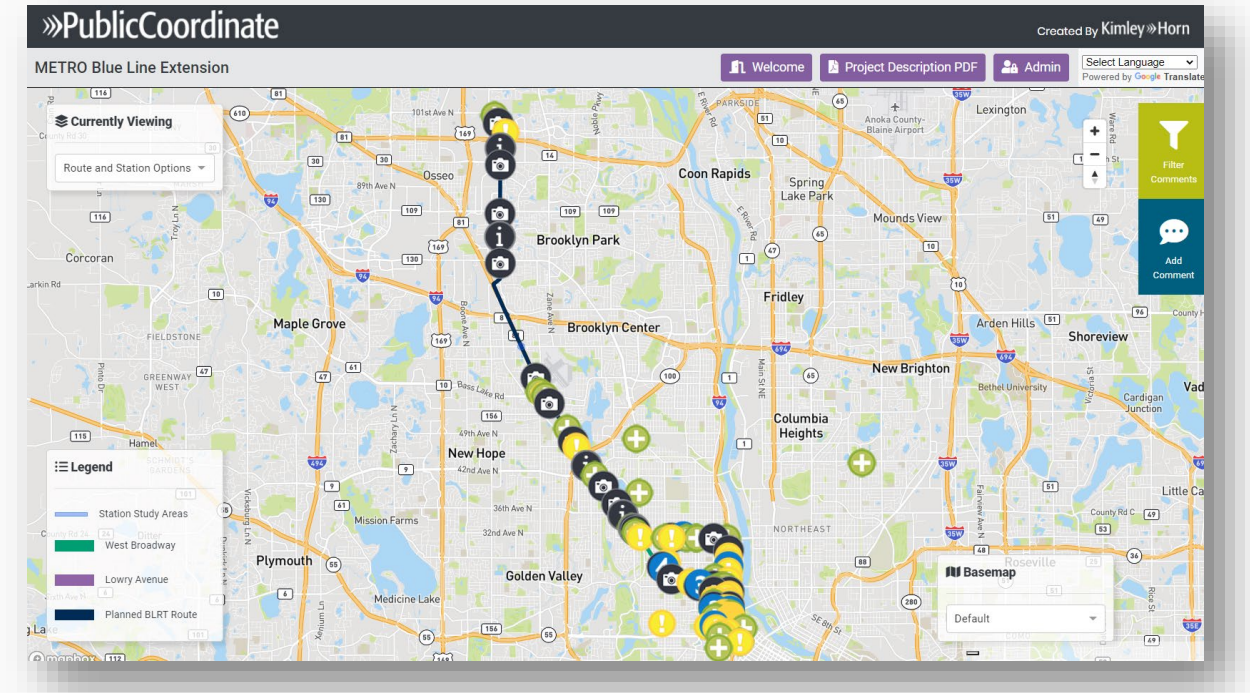


*Open house in Minneapolis –
January 12, 2022*

Interactive Map Comments

Summary

- 296 public comments received since Dec. 13
 - 23 comments in Brooklyn Park
 - 13 comments in Crystal
 - 52 comments in Robbinsdale
 - 110 comments on Lowry Route
 - 81 comments on West Broadway Route
 - 17 in other locations (Brooklyn Center, Champlin, Saint Anthony)



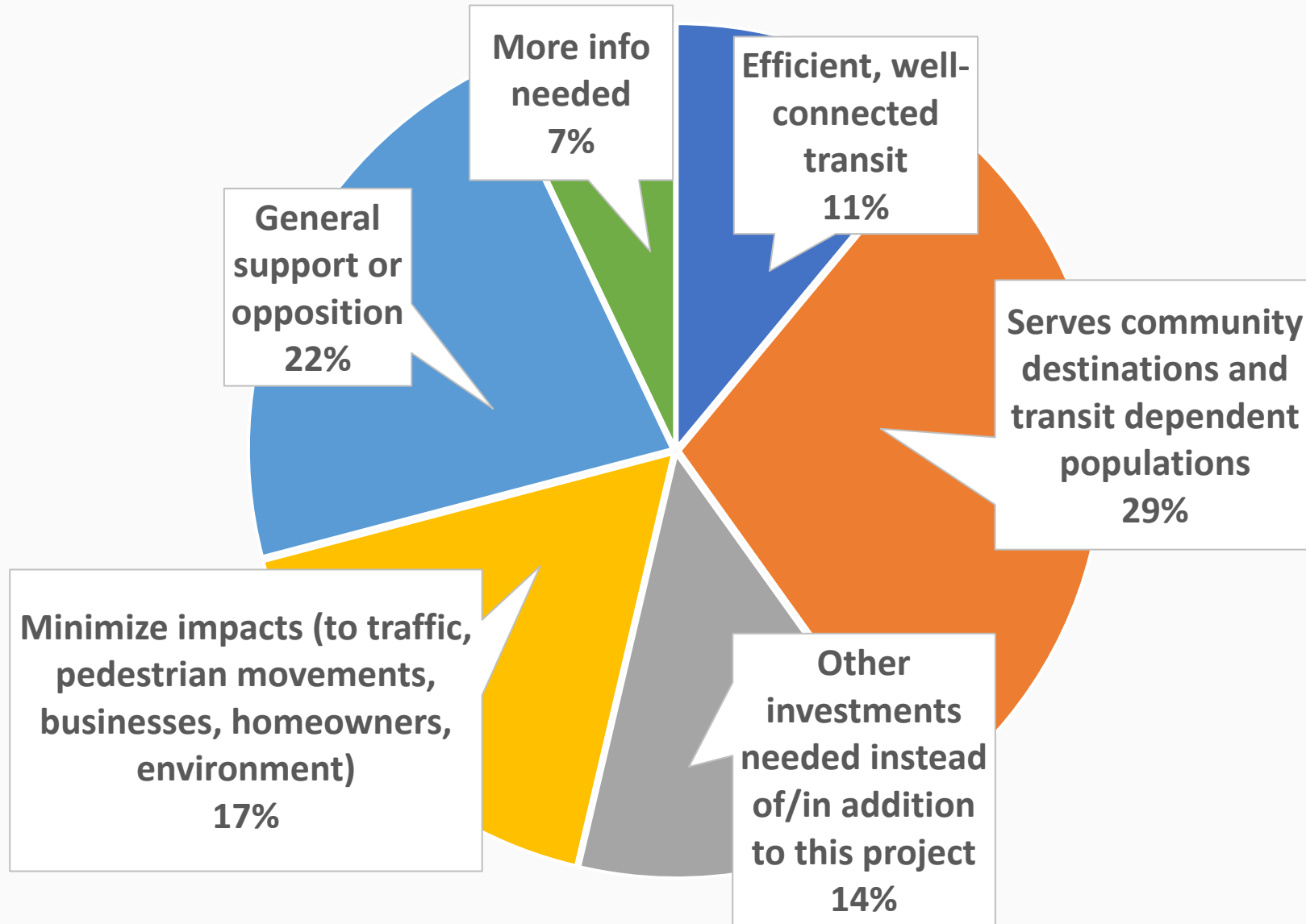
Overall Themes

- Need for efficient transit option that also connects to other modes/transit routes
- Select route that serves transit dependent households and access to more businesses / destinations
- Other investments needed as part of the project related to traffic, bus, bike/ped improvements and safety
- General support or opposition for West Broadway, Lowry, or overall project
- More info needed about:
 - Project ridership, safety impacts, station renderings, train travel times, cost of each route option, TOD produced by each route option, construction timelines/impacts, funding for equitable community development along the route



Open house in Robbinsdale – January 11, 2022

Overall Themes (continued)





Common Themes of Goal 1: Improve transit access and connections to jobs and regional destinations.

Overall

- Put BRT on the route that isn't selected to serve people in all the neighborhoods along the two proposed routes
- LRT needs to connect to other transit routes

Area 1

- Park-and-rides should be walkable
- Need to plan connections to nearby parks and trails (Rush Creek Trail and Shingle Creek Trail)

Crystal

- Concern about traffic impacts on County Road 81

Robbinsdale

- Station near Downtown Robbinsdale would serve many of the businesses
- Concern about access to neighborhoods and business during construction
- Mixed feedback about park and ride location



Common Themes of Goal 1: Improve transit access and connections to jobs and regional destinations.

Lowry - Opportunities

- Stations east of I-94 provides access to the underdeveloped areas along the river
- Allows extension north along I-94 into NE
- Opportunity to bring more residents and businesses to the area
- Connects to existing and planned BRT routes
- Serves zero vehicle households
- Provides access to North Loop, Upper Harbor Terminal development, attractions in NE

Lowry - Concerns

- Location between I-94 and river is mostly industrial, little residential
 - People who use LRT would need to cross I-94 to access it
- Would result in many pedestrian crossings being cut off between neighborhood streets
- Lowry only serves commuters (people passing through North Minneapolis)



Common Themes of Goal 1: Improve transit access and connections to jobs and regional destinations.

West Broadway - Opportunities

- West Broadway is a vibrant cultural/economic corridor with many destinations and services
- Brings more customers to local businesses and help to revitalize West Broadway
- Connects to existing and planned BRT routes

West Broadway - Concerns

- Concern about traffic on West Broadway; need for a more pedestrian friendly environment



Common Themes of Goal 2: Improve frequency and reliability of transit service to communities in the corridor.

Overall

- Mixed feedback about elevated track options

Crystal

- Need for LRT to work well with traffic
- Desire for a fast route into downtown

Robbinsdale

- Concern about LRT splitting Robbinsdale, impacts on businesses, traffic congestion, emergency response
- Supportive of LRT in Robbinsdale – BRT/bus are too slow due to traffic, LRT is easier, more frequent



Common Themes of Goal 2: Improve frequency and reliability of transit service to communities in the corridor.

Lowry - Opportunities

- Ability to improve transit efficient / traffic in the area for buses
- Lowry route would cause less congestion going in/out of the downtown area

Lowry - Concerns

- Traffic impacts – 10th Ave already has heavy traffic
- Narrow right-of-way at 10th Ave and Washington, limited parking in this area/need to maintain parking
- Sharp turn would be noisy and slow down travel times
- Worsening traffic



Common Themes of Goal 2: Improve frequency and reliability of transit service to communities in the corridor.

West Broadway - Opportunities

- More efficient/direct route
- Desire for design options that are not impeded by traffic

West Broadway - Concerns

- Concern about the congestion/traffic signals on West Broadway slowing the train down



Common Themes of Goal 3: Provide transit improvements that maximize transit benefits, while being cost competitive and economically viable.

Overall

- Received comments about BRT or LRT being a poor use of taxpayer money

Crystal & Robbinsdale

- Concern about money already spent on roadway improvements

Lowry/West Broadway

- Concern about compete roadway reconstruction



Common Themes of Goal 4: Support communities' development goals.

Brooklyn Park

- Transit connections create opportunities for future TOD

Lowry - Opportunities

- Desire to build business nodes, and small businesses
- Desire to see affordable housing developed using vacant lots businesses and affordable & market-rate housing

West Broadway - Opportunities

- West Broadway is an important commercial corridor – existing businesses would benefit from presence of light rail
- Opportunity for more mixed use residential and business development
- Ensure development benefits existing businesses, leverages current community initiatives, supports small, POC owned enterprises



Common Themes of Goal 5: Promote healthy communities and sound environmental practices including efforts to address climate change.

Overall

- Community input on station design and placement – stations should be unique and reflect neighborhoods they are in; budget money for station art
- Prioritize bike/ped traffic over vehicle traffic to/from stations
- Consider EV charging near stations
- Need to ensure safety of all riders and community



Common Themes of Goal 5: Promote healthy communities and sound environmental practices including efforts to address climate change.

Brooklyn Park

- Need for a safe bike/walking route to near by trails/destinations

Crystal

- Concern about high traffic volumes at Bass Lake Road Station; stressful to cross with high vehicle speeds; consider above/below grade transit stations and crossings

Robbinsdale

- Desire for a pedestrian bridge over County Road 81
- Concern about noise coming from station near North Memorial



Common Themes of Goal 5: Promote healthy communities and sound environmental practices including efforts to address climate change.

Lowry - Opportunities

- Stations would feel safe to walk to
- Hope that residents would use transit instead and reduce VMT

Lowry - Concerns

- Concern about walkability to station on Washington

West Broadway - Opportunities

- Opportunity to create a better pedestrian environment along West Broadway
- Enables residents to get rid of car, saving money and prevent emissions
- Adding LRT provides opportunity to calm traffic on West Broadway

West Broadway - Concerns

- Concern that adding LRT to West Broadway will worsen pedestrian safety



Common Themes of Goal 6: Advance local and regional equity and work towards reducing regional racial disparities.

Overall

- North Minneapolis deserves both routes; reparation for disinvestment over many decades
- Concern that selecting a route will lead to displacement

West Broadway - Opportunities

- Investment opportunities

- Closer to the previous alignment

West Broadway - Concerns

- Concern about business impacts during construction
- Concern about parking

Lowry - Opportunities

- Has wider right-of-way and more vacant adjacent properties already publicly owned

City Feedback on Report

- **Brooklyn Park**

- Supports the route change from rail corridor to County Road 81
- Pedestrian crossings need to be evaluated at 63rd St Station and ensure that development opportunities are retained in the 73rd Ave flyover area

- **Crystal**

- Additions to report to include details about vehicular mobility impacts from reducing County Road 81 from 6 to 4 lanes
- Requesting opportunity for further input on a decision about at-grade or grade separation at Bass Lake Road



City Feedback on Report (continued)

- **Robbinsdale**

- Robbinsdale evaluated separately in the report
- A no-build option should be evaluated as part of the report

- **Minneapolis**

- Need for additional information to assist identifying a preferred route between West Broadway/Lyndale and Lowry/Washington Avenues

- **Maple Grove**

- Request to include design options to accommodate a future BLRT spur to Maple Gove



Consideration of Comments

- Two types of comments received:
 - Consistent themes from what we previously heard
 - Request to provide additional information for the analysis
- Comments received will be incorporated into the Route Modification Report
 - 30-day comment period will follow release of Report to allow communities to comment on the recommendation

Anti-Displacement Working Group Update



Next Meeting: March*



Stay Connected!

- Project website: BlueLineExt.org
 - Project news, maps, surveys, what we're hearing
 - Committee meeting materials: agenda, handouts, presentations, meeting minutes
 - Sign-up for GovDelivery project updates
 - Connect with staff for your questions or schedule a presentation
- Follow us:
 - Twitter: [@BlueLineExt](https://twitter.com/BlueLineExt)
 - Facebook: [MetroBlueLineExtension](https://www.facebook.com/MetroBlueLineExtension)

