

# Business Advisory Committee

July 12, 2022



BROOKLYN PARK | CRYSTAL | ROBBINSDALE | MINNEAPOLIS



# Today's Topics

---

- Approve Meeting Summary
- Anti-Displacement Update
- Design & Environmental Next Steps



A service of the Metropolitan Council

COUNTIES *Transit*  
Improvement  
BOARD

# Approval of June Meeting Summary



# Anti-Displacement Update







# June 4<sup>th</sup> Event

---

- Day-long workshop
- Reviewing data
- Co-defining displacement
- Reviewing anti-displacement policies
- Deciding what to focus on

# Day-long workshop: Key takeaways

---

- Research on how each LRT line has a different effect on the timing of displacement
  - Trend: BLE will experience development and pressures of displacement earlier than the other lines
- Green Line Investment Framework
  - What worked
  - Opportunities to further efforts



# Day-long workshop: Key takeaways

---

- National policies/programs/investments overview
  - Graphic illustrating what type of displacement they mitigate
- ADWG recommendations to mitigate displacement for government bodies to work on – high overview of focus areas
  - Develop policy nuance
  - Model policies for effectiveness



# Day-long workshop: Key takeaways

---

- Co-defining displacement examples
  - Changes that force people out or feel like they no longer belong
  - People are forced out of a location and can not live or work there anymore
  - Housing price increases
  - Businesses forced out of the neighborhood
  - Deconstructing/demolishing communities for economic gain
  - Home (or part of your home) isn't available to you anymore
  - A return of those who fled, back to previously undesirable neighborhoods





# Community based project website

---

- [www.mybluelineext.org/anti-displacement](http://www.mybluelineext.org/anti-displacement)
  - Anti-Displacement Work Group membership roster
  - Workshop and meeting recordings and summaries
  - Meeting materials
  - News releases and interviews
  - Meeting schedule



# What's next?

- Public Open Houses
  - Inform/collect input/feedback
- Internal government meetings and its focus/process
- Scheduled ADWG meeting dates
  - Additional 2-hour meetings to work through recommendation progress with ADWG to further or redefine focus



# Design & Environmental Next Steps



# Update on Environmental Evaluation

- Environmental Review (Final EIS and Record of Decision) completed for previous project definition
- Re-evaluation is a federal process to determine whether a completed environmental document or decision requires supplemental analysis
- Parallel process for Minnesota Environmental Policy Act





# Environmental Next Steps

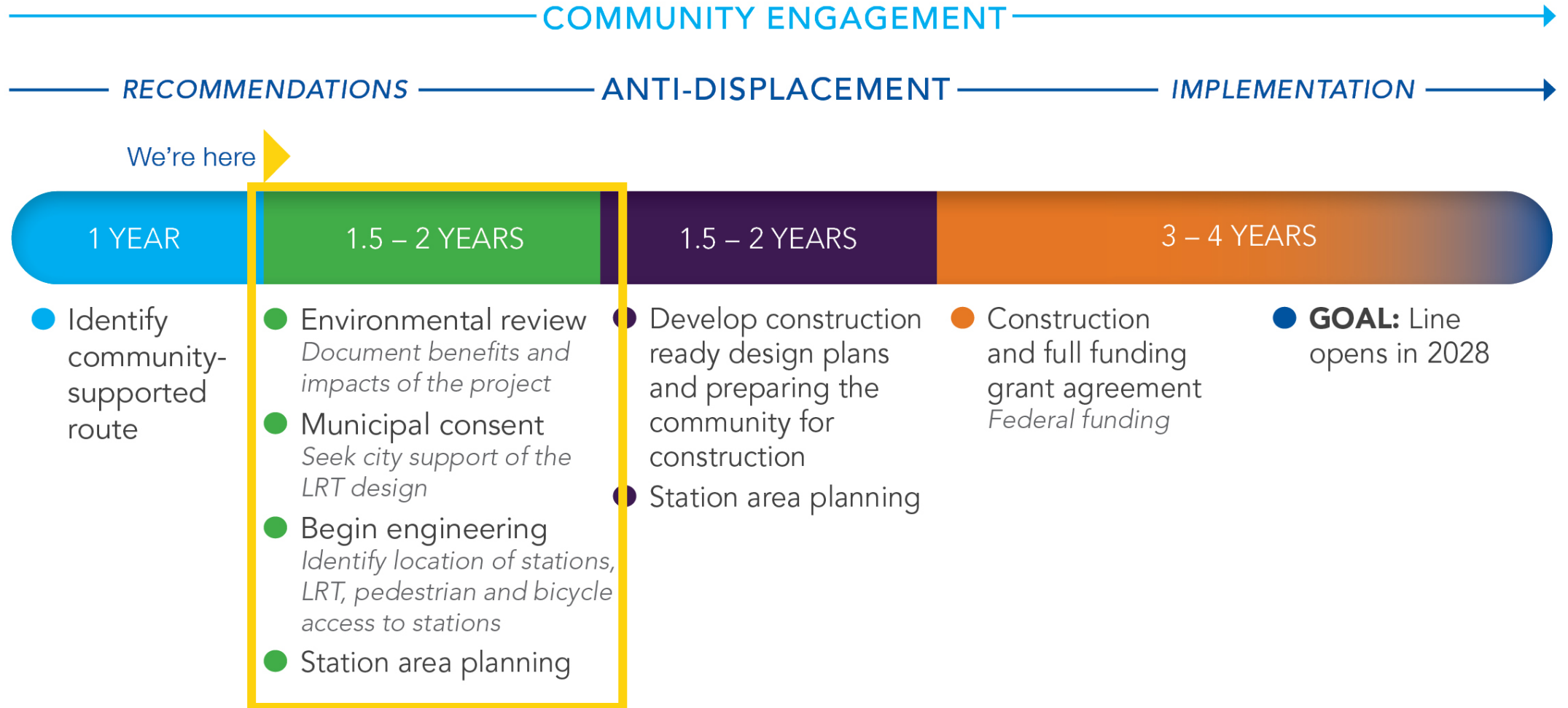
---

- Re-evaluation Memo Submitted to FTA for review: June 2022
  - Recommends a Supplemental EIS as the NEPA Class of Action
    - When changes to the proposed project would result in significant environmental impacts that were not evaluated in the Final EIS
    - Modified route has impacts to locations not previously assessed
  - Commence environmental review in Summer 2022 after Re-Evaluation is approved





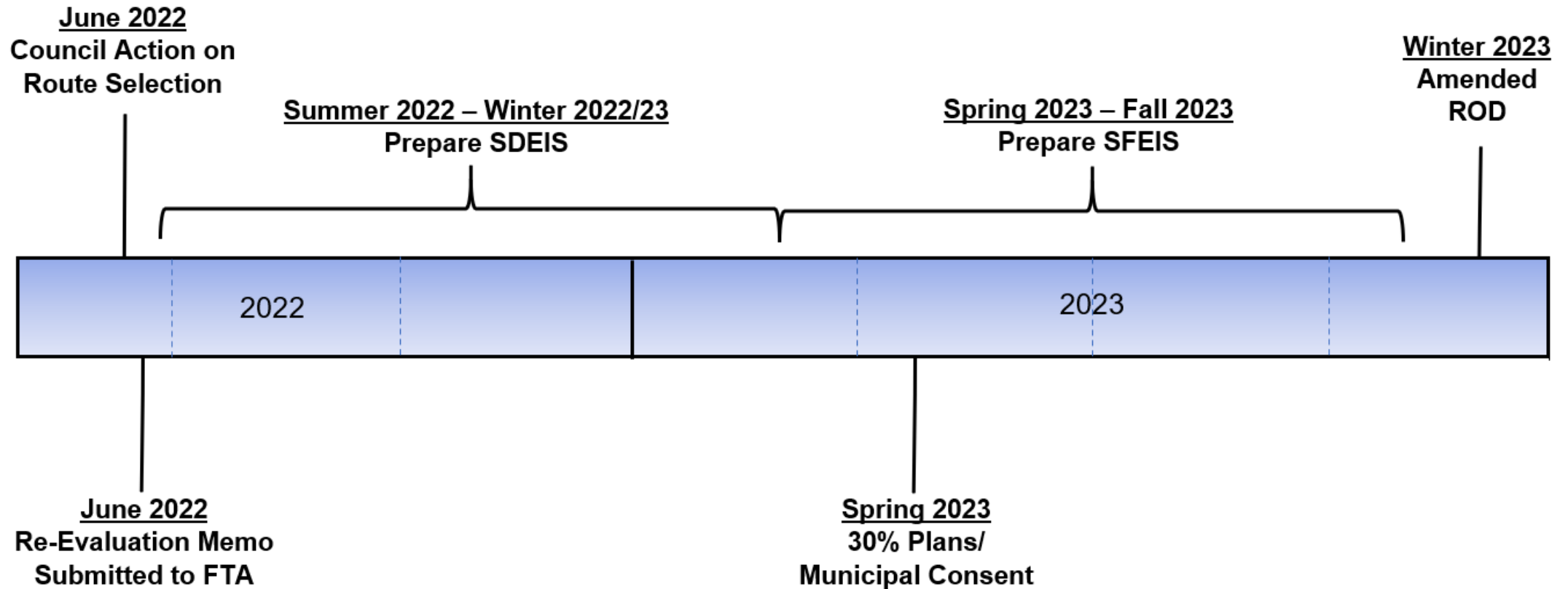
# Project Schedule



LRT projects are complex and unforeseen challenges arise. Schedules and timelines are subject to change.



# Environmental Anticipated Next Steps



# Environmental Next Steps

---

- Prepare and publish Draft Environmental Documentation
  - Compare multiple design solutions impacts and benefits
- Public Hearing on Draft Environmental Documentation
  - More public engagement and hearing
  - Comment period



# Environmental Next Steps

---

- Prepare Final Environmental Documentation
  - Social, economic, and environmental impacts reflected in project design
  - Mitigation commitments finalized
- Amend the Project Record of Decision
  - Formalizes environmental commitments



# Issue Resolution Process



- Issue Resolution Teams (IRT) are composed of city staff and the Blue Line Project Team members
- Developing full list of engineering and design issues with each city that will be updated regularly and shared with advisory committees
- During regular IRT meetings issues are resolved and incorporated into the design and environmental process

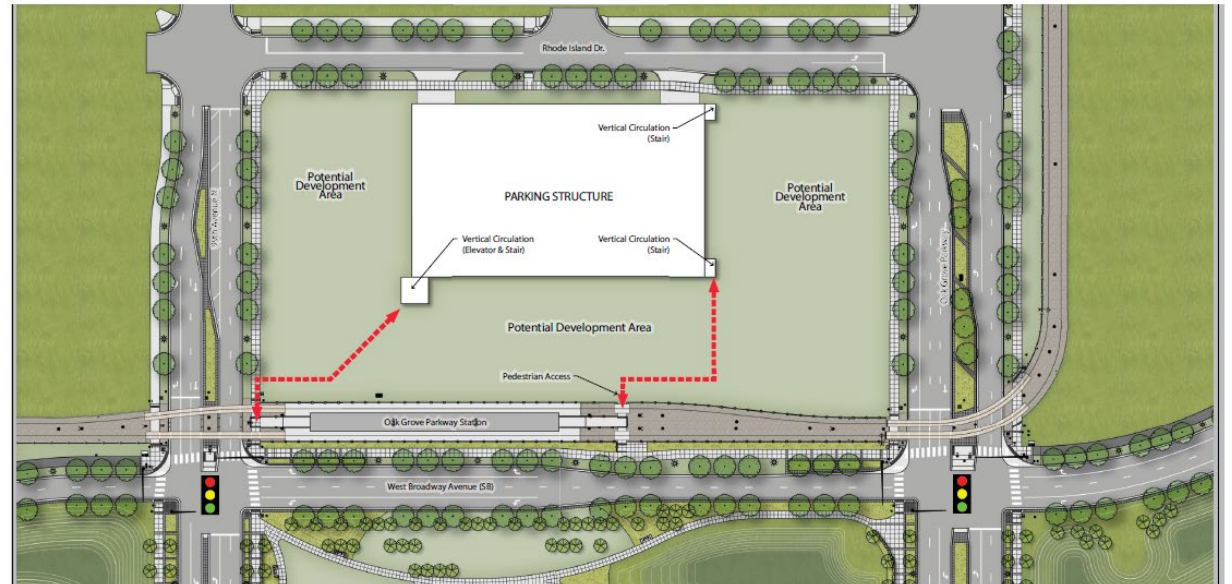




# Brooklyn Park: Previous Design Refresh

- Ensure plans meet revised design and environmental requirements
- Update designs for new developments
- Pedestrian crossing at 63<sup>rd</sup> Avenue Station

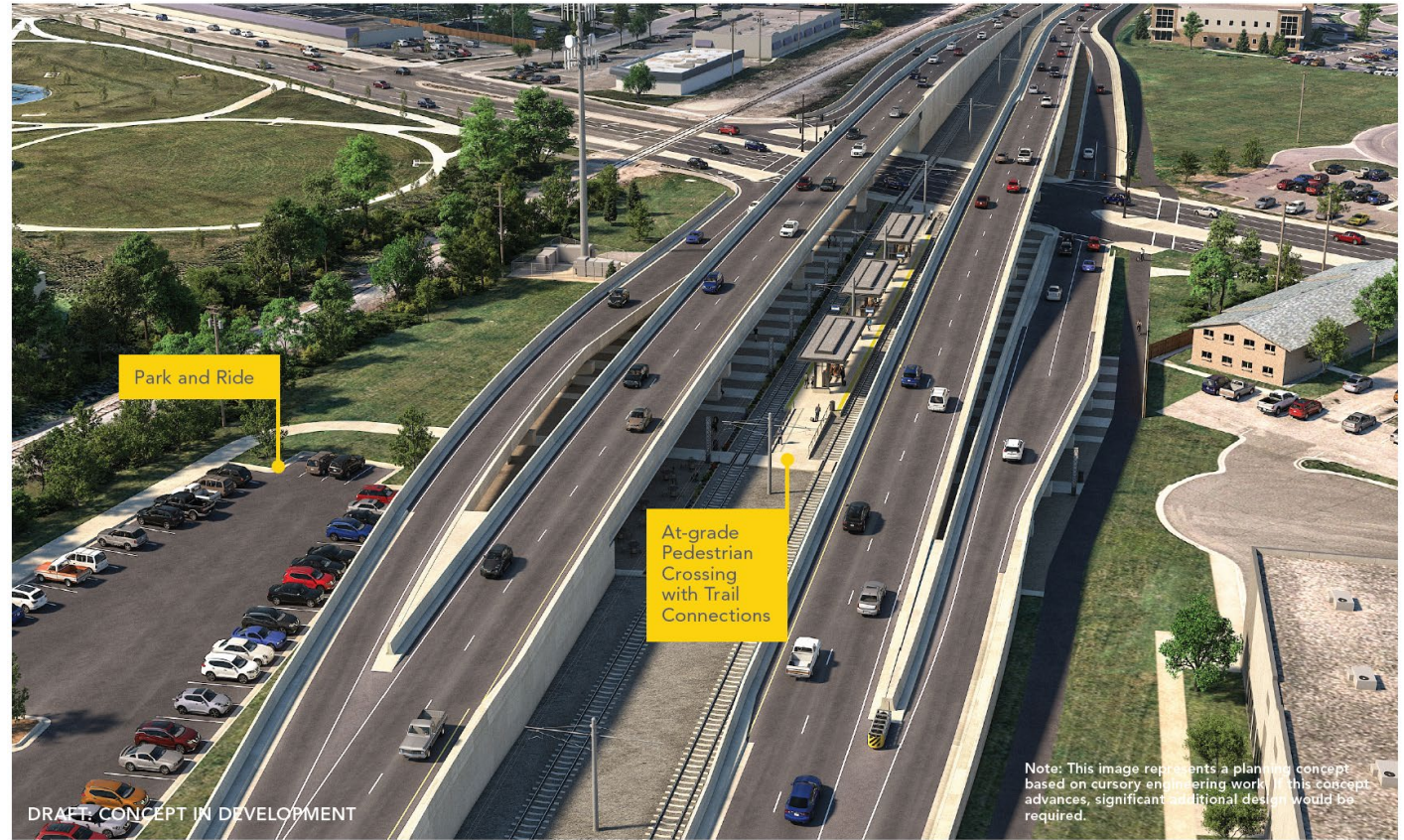
## OAK GROVE PARKWAY STATION DESIGN CONCEPTS, BROOKLYN PARK



Site Plan

# Crystal: CR 81/Bass Lake Road Intersection

- Traffic capacity and intersection operations on County Road 81
- Refine station access and design



*Aerial View of Station Area Looking North*





# Robbinsdale: Station placement

- Station placement downtown
- North Memorial Hospital station and access



DRAFT: CONCEPT IN DEVELOPMENT





# Minneapolis: Route to West Broadway

- Actively evaluating options between Target Field Station and West Broadway Avenue in Minneapolis
  - Developing routing options
  - Preparing evaluation matrix
  - Designing robust community engagement



**Legend**  
[Green Box] Study Area  
[Blue Line] Recommended Route

**TARGET FIELD STATION**

**Next Meeting: Seeking Reappointments**

**Thank you!!!**

