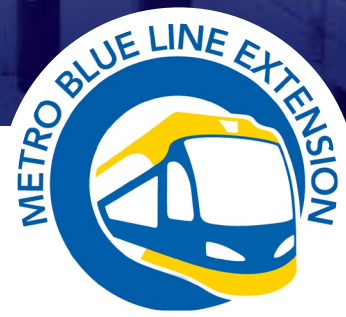


Business Advisory Committee

May 9, 2023



BROOKLYN PARK | CRYSTAL | ROBBINSDALE | MINNEAPOLIS



Today's Topics

- Welcome and Call to Order
- Anti-Displacement Overview & Recommendations
- Discussion and Members Feedback
- Next Steps
- Adjourn



The public can submit written comments to Nkongo Cigolo (Nkongo.Cigolo@metrotransit.org)

Call to Order & Approval of April Meeting Summary



Anti-Displacement Overview



Work Group Member Introductions



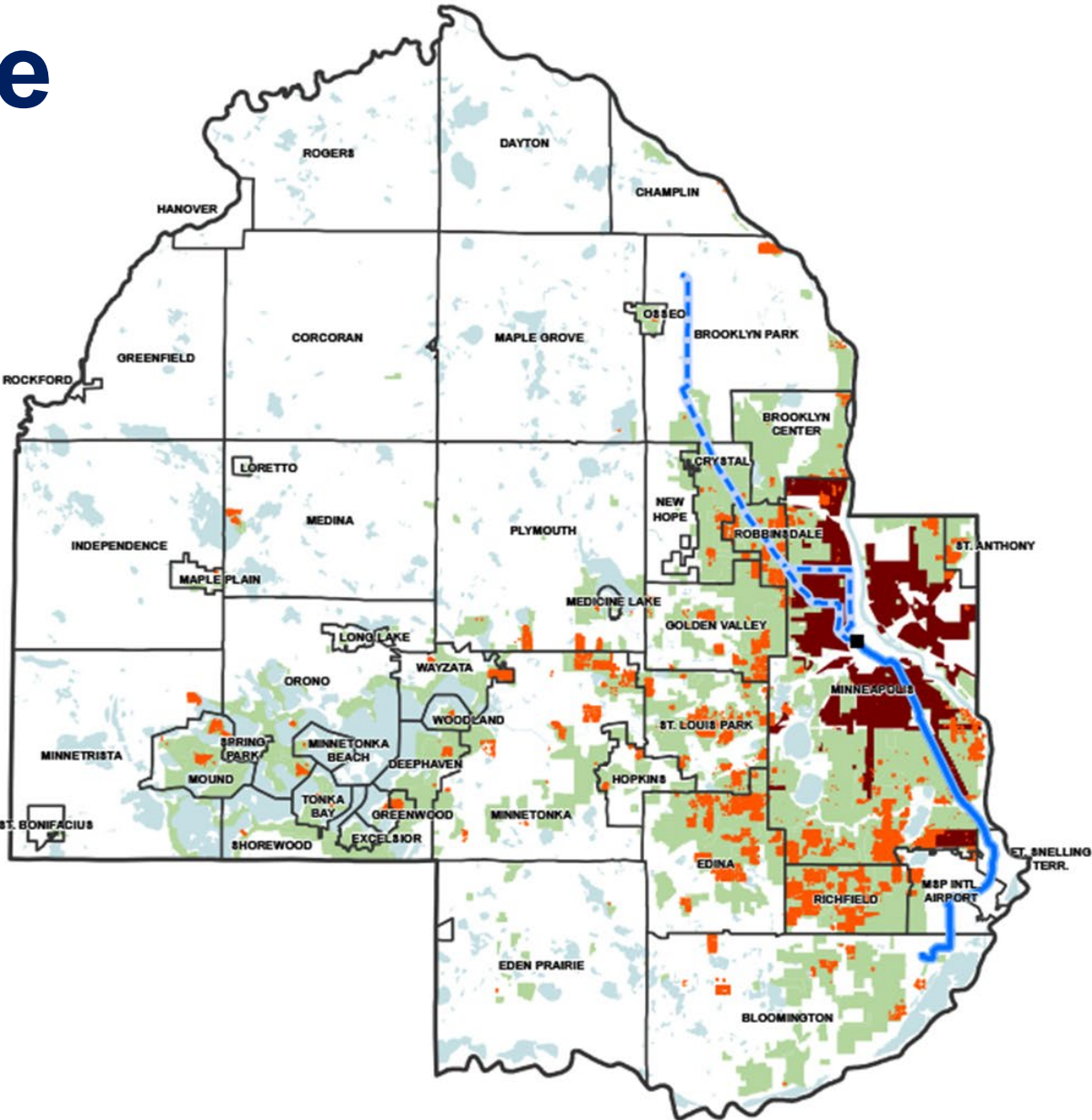
Mapping Prejudice

Historical redlining and Racial Covenants

Map Legend

- Light Rail Transit**
 - Target Field Station
 - Blue Line (Existing)
 - - - Blue Line Extension (Proposed)
- Parcels with Historical Racial Covenants
- Historic HOLC Neighborhood Appraisal - Red Line Areas*
- Residential Land Use - 1959
- Water Bodies

*Classified by Home Owners Loan Corporation (HOLC) as "Definitely Declining" or "Hazardous"

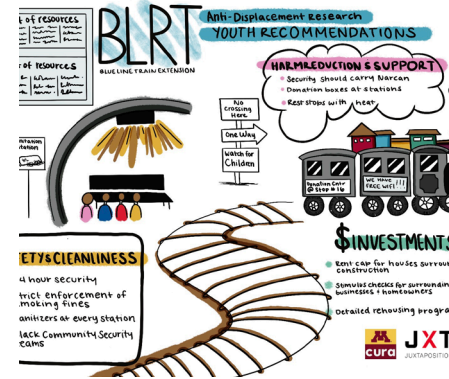


Source: <https://mappingprejudice.umn.edu/>



Vision for the Blue Line Extension Anti-Displacement Work

- Minimize displacement and maximize community benefits of light rail by centering community voices in establishing strong anti-displacement strategies for implementation



Goals

- Ensure light rail investment benefits current corridor residents, businesses
- Help communities prepare for light rail opportunities, survive construction, and thrive into the future



Anti-Displacement Recommendations



Recommendations



Centers recommended
outcomes first

Distinct to each jurisdiction
and corridor-wide



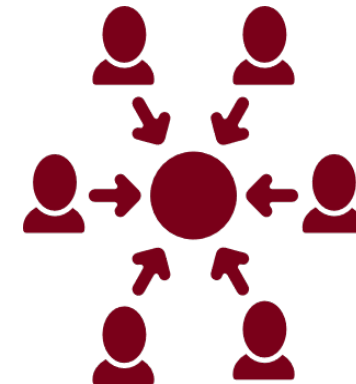
17 policies support
recommended outcomes



ADWG identified underlying
principles for all
recommendations

Principles for Recommendations

- Accessible to all
- Measurable with accountability mechanisms
- Designed to support those most impacted by construction
- Target existing residents, not potential ones



Brooklyn Park Recommended Outcomes

- Keep the rich culture of the corridor in place
- Improve the climate for businesses post-construction, and prioritize development of spaces for small businesses
- Provide opportunities for existing residents and businesses to stay in place and feel supported
- Support development, preservation, and access of safe and affordable housing and housing choice
- Ensure youth feel safe on and around the light rail and feel excited and proud to remain in their communities



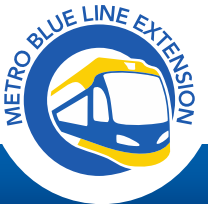
Crystal/Robbinsdale Recommended Outcomes

- Address indirect construction impacts
- Improve the climate for businesses post-construction, and prioritizing development of spaces for small businesses
- Improve infrastructure around the project
- Support development, preservation, and access of safe and affordable housing and housing choice
- Keep the rich culture of the corridor in place
- Ensure there are sufficient resources to support policy implementation, organizing efforts, community development and ownership, and other anti-displacement strategies



Minneapolis Recommended Outcomes

- Provide opportunities for community to connect to BLRT and development in a joyful way
- Create opportunities for community ownership and being able to measure levels of community ownership
- Empower community to have control over decision-making throughout the corridor
- Provide opportunities for existing residents and businesses to stay in place and feel supported
- Grant reparations to the Harrison neighborhood for the harm caused by the previous iteration of the alignment



Minneapolis Recommended Outcomes

(continued)

- Create and enforce structures of accountability for government agencies along the alignment
- Ensure there are sufficient resources to support policy implementation, organizing efforts, community development and ownership, and other anti-displacement strategies
- Ensure there is access to land, housing and businesses in the corridor throughout all phases of construction
- Ensure that 50% of jobs from the Bottineau Light Rail development are held by North Minneapolis residents
- Ensure that there is a continued role for ADWG members throughout all phases of the project



Policy Recommendations

Mandatory Relocation Assistance

Tenant Opportunity to Purchase

Limiting Investor Purchasing/Corporate Ownership

Land Disposition Policy

Right to Return

Rent Stabilization

Commercial and Residential Land Trusts

Financial Resources for Organizing/The Right to Organize

Zero to Low Interest Loans

Small Business Grants/Small Business Support

Workforce Programs

NOAH Preservation

Inclusionary Zoning

Universal Basic Income/Guaranteed Basic Income

Right to Counsel

Tenant Screening Reform

Cultural Placekeeping/Placemaking



What it Will Take for Implementation



Coordination, collaboration
and commitment



Investment and partnership
from public, private,
philanthropic, and
community organizations



Transparency and shared
decision-making

Transitioning to Implementation

June 2023-2024

- Communicate recommendations, Phase I deliverables
- Engage communities in developing implementation plan
- Prioritize strategies for before, during, after construction
- Bring implementing partners together for action



Read the recommendations and provide feedback

[Yourblueline.org/anti-displacement](https://yourblueline.org/anti-displacement)



Anti-Displacement Workgroup Members



Discussion and Members Feedback



Blue Line Extension Project Next Steps



Minneapolis Design Decisions Preview

- June 8, 2023 CMC meeting to focus on update of Mpls Decisions required to publish the Supplemental Draft EIS
- Decisions that will be reported on include:
 - Route option from Target Field Station to West Broadway
 - Route option for LRT on West Broadway or 21st Avenue
 - Number and Location of Stations
 - Penn Avenue Station Location



Stay connected

- **BlueLineExt.org**
 - For the latest project updates and to sign up for our newsletter
 - Connect with staff for your questions or schedule a presentation
- Follow us:
 - Twitter: @BlueLineExt
 - Facebook: MetroBlueLineExtension



A service of the Metropolitan Council

COUNCIL'S *Transit*
Improvement
BOARD