

Community Advisory Committee

January 11, 2023



BROOKLYN PARK | CRYSTAL | ROBBINSDALE | MINNEAPOLIS



Today's Topics

- Project Update
- Engagement Rollout for 2023
- Format of Committee Presentations (Feb - May)
- Anti-Displacement Update
- Cultivate Arts Recap
- Questions



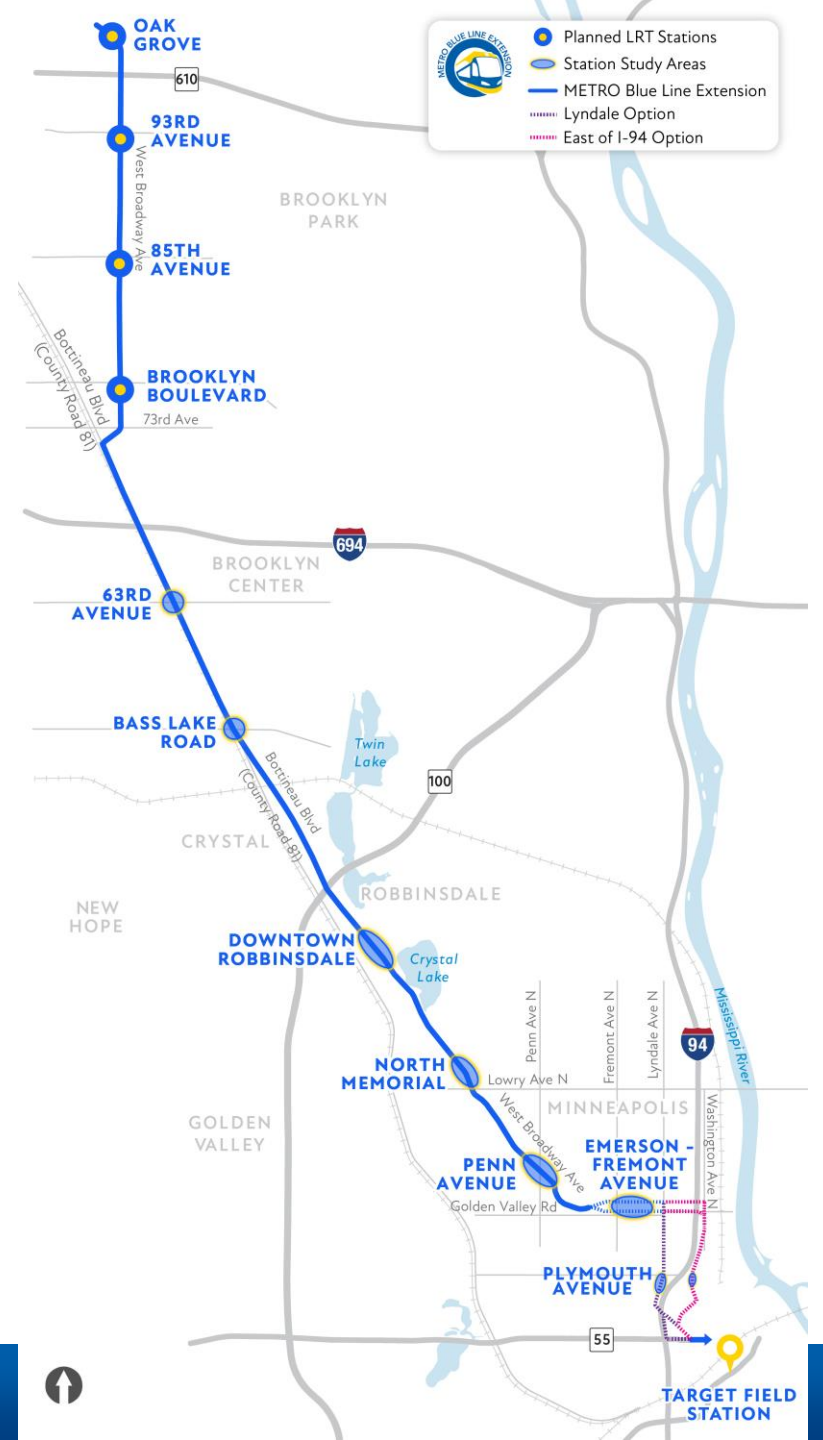
A service of the Metropolitan Council
TRANSIT BOARD
Transit Improvement

Project Update



Blue Line LRT Extension

- Located in Hennepin County directly connecting downtown Minneapolis, Robbinsdale, Crystal and Brooklyn Park and communities in the northwest Metro
- New route adopted in June 2022
- Advancing environmental analysis and engineering for Supplemental Draft and Final EIS
- Public engagement underway and ongoing, including an Anti-Displacement Workgroup



Project Schedule



LRT projects are complex and unforeseen challenges arise. Schedules and timelines are subject to change.



Environmental Update

1. Select design options included in draft environmental document

- Public comment period on the design options (Oct 18 – Nov 7, 2022)

2. Prepare draft environmental document

we are here

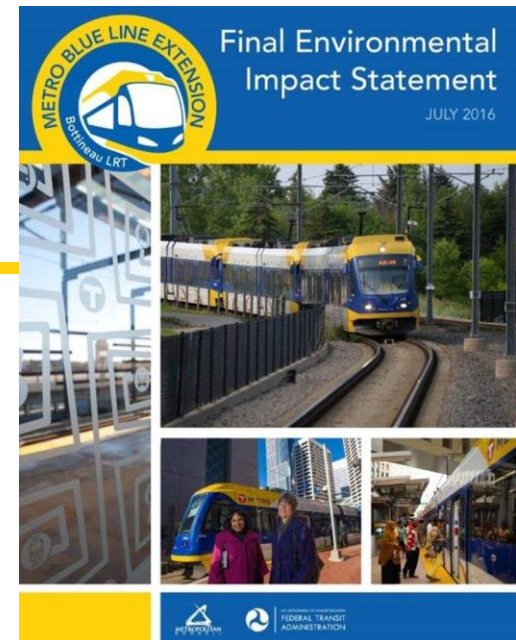
- Public comment period on the findings

3. Selected preferred route

- Public comment period and municipal consent

4. Prepare final environmental document and mitigation commitments

- Public comment on the mitigation commitments



Original FEIS completed July 2016



Project Purpose and Need

- Review Purpose and Need
- Review Project Principles
- Review Project Goals



Outreach Update



Outreach and Engagement Plan

- 2023 Outreach and Engagement & Committee Workplan
 - Designed to develop policy recommendations for preferred route(s) where SDEIS includes more than one option
 - “Line, Lanes and Stations” recommendation included in SDEIS
 - One corridor city reviewed by BLRT Committees each month (Feb - May)



SDEIS: Supplemental Draft Environmental Impact Statement

Committee Workplan for 2023



	Jan	Feb	Mar	Apr	May	June	July	Aug
BLRT Committees	Review Workplan	Brooklyn Park	Crystal	Robbinsdale	Minneapolis			
Brooklyn Park		CMC Review				} CMC Recommendation		
Crystal			CMC Review					
Robbinsdale				CMC Review				
Minneapolis					CMC Review			



Committee Workplan for 2023

	Jan	Feb	Mar	Apr	May	June	July	Aug	Sept	Oct	Nov	
BLRT Committees	Review Workplan	Brooklyn Park	Crystal	Robbinsdale	Minneapolis							
Brooklyn Park		CMC Review				} CMC Recommendation						
Crystal			CMC Review									
Robbinsdale				CMC Review								
Minneapolis					CMC Review							
SDEIS				FTA Review #1		FTA Review #2		FTA Review #3		Legal Review	Finalize SDEIS	Publish SDEIS
Design										30% Design		
Anti-Displacement Workgroup			Recommendations & Begin Implementation		Phase II							



Outreach and Engagement Look-Ahead

Brooklyn Park

Feb - City Council Update

Jan 30 - Open House

Feb – Blue Line Committees*

Crystal

Feb - City Council Update

Feb 27 - Open House

Mar – Blue Line Committees*

Robbinsdale

Mar - City Council Update

Mar 6 - Open House

Apr – Blue Line Committees*

Minneapolis

Apr - City Council Update

Mar 20 & Apr 17 Open Houses

May – Blue Line Committees*

*Technical Project Advisory Committee (TPAC), Community Advisory Committee (CAC), Business Advisory Committee (BAC), Corridor Management Committee (CMC)



Outreach and Engagement Plan

Blue Line Committees*
review staff
recommendations for
options in SDEIS

June 5 - TPAC

June 6 - BAC

June 7 - CAC

June 8 - CMC

- June 2023 will focus on policy recommendations for Supplemental Draft Environmental Impact Statement (SDEIS)

*Technical Project Advisory Committee (TPAC), Community Advisory Committee (CAC), Business Advisory Committee (BAC), Corridor Management Committee (CMC)



Format of Committee Presentations (Feb – May)



Committee Presentations (by City)

- Format for each BLRT Committee meeting (Feb – May):
 - Project Scope Overview in SDEIS (by city)
 - Open Issues and Opportunities (by city)
 - Review Design Decisions Document (includes CMC decisions required to publish SDEIS)



Project Scope Overview (by City)

- Summary of SDEIS Scope
- Update on SDEIS Analysis



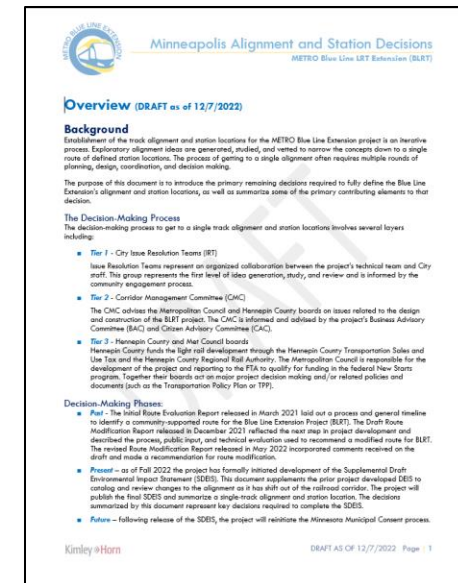
Open Issues and Opportunities (by City)

- High-level overview of Design Issues and Opportunities
- Timing of decision-making to inform Design
- Decisions/requirements to publish SDEIS
- Discussion of Municipal Consent process and timing



Review Design Decisions Document (by City)

- A Design Decision Document will be developed and reviewed for each City documenting:
 - Decision-Making Process & Phases
 - Engagement Plan
 - Key Design Decisions
 - Technical Challenges and Opportunities
 - Summary of Community/Stakeholder Input
 - Outstanding Issues



Anti-Displacement Work Group Update



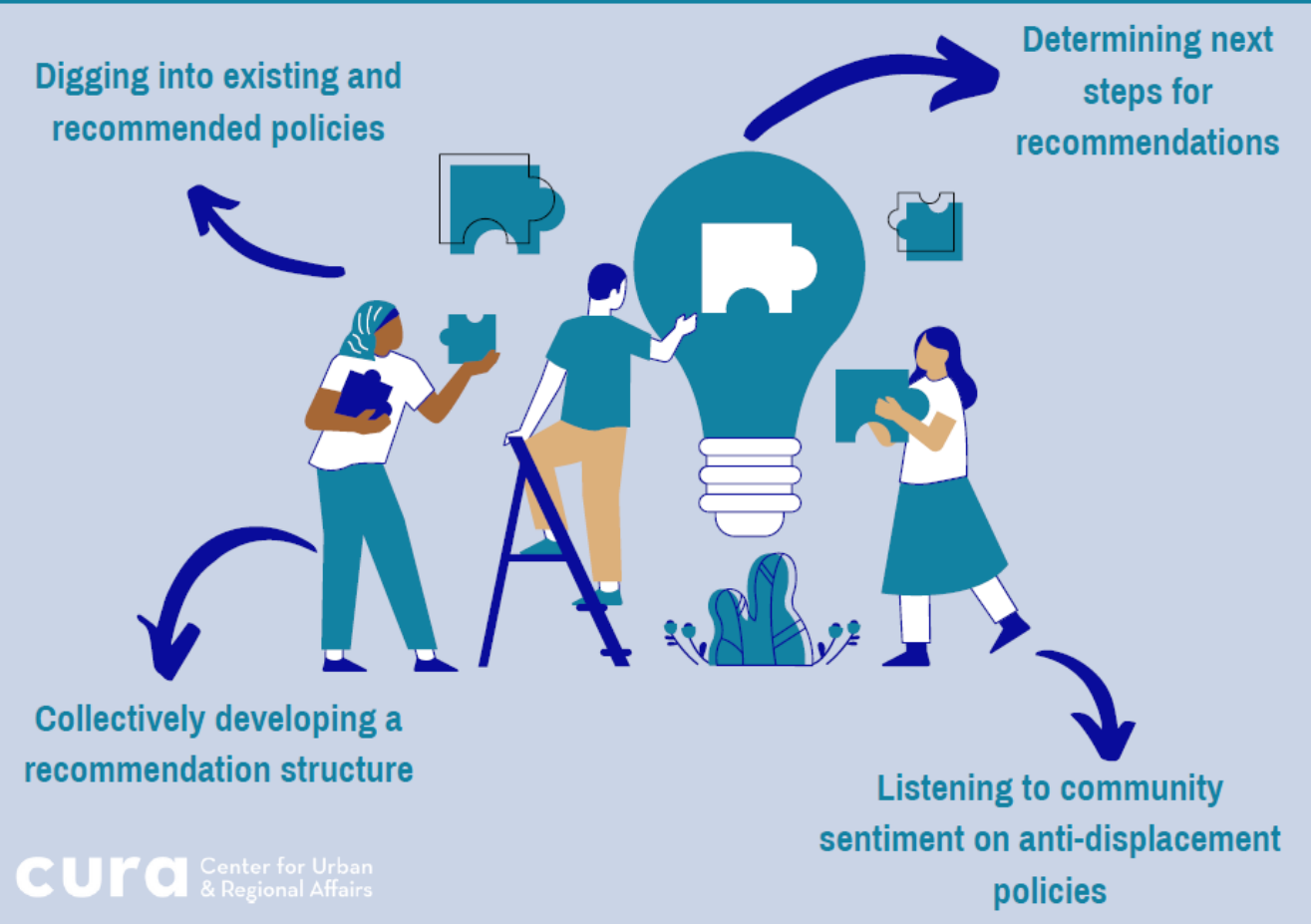
Workshop #1: Displacement and Lessons Learned from Previous Light Rail Projects

The June 4 workshop focused on national best practices in anti-displacement policies and case studies of existing Twin Cities light rail projects.



Workshop #2: Existing Anti-Displacement Policies and Creating a Recommendation Structure and Process

The September 24 workshop focused on existing anti-displacement policies in the Twin Cities, opportunities to build policy, and developing a recommendation structure.



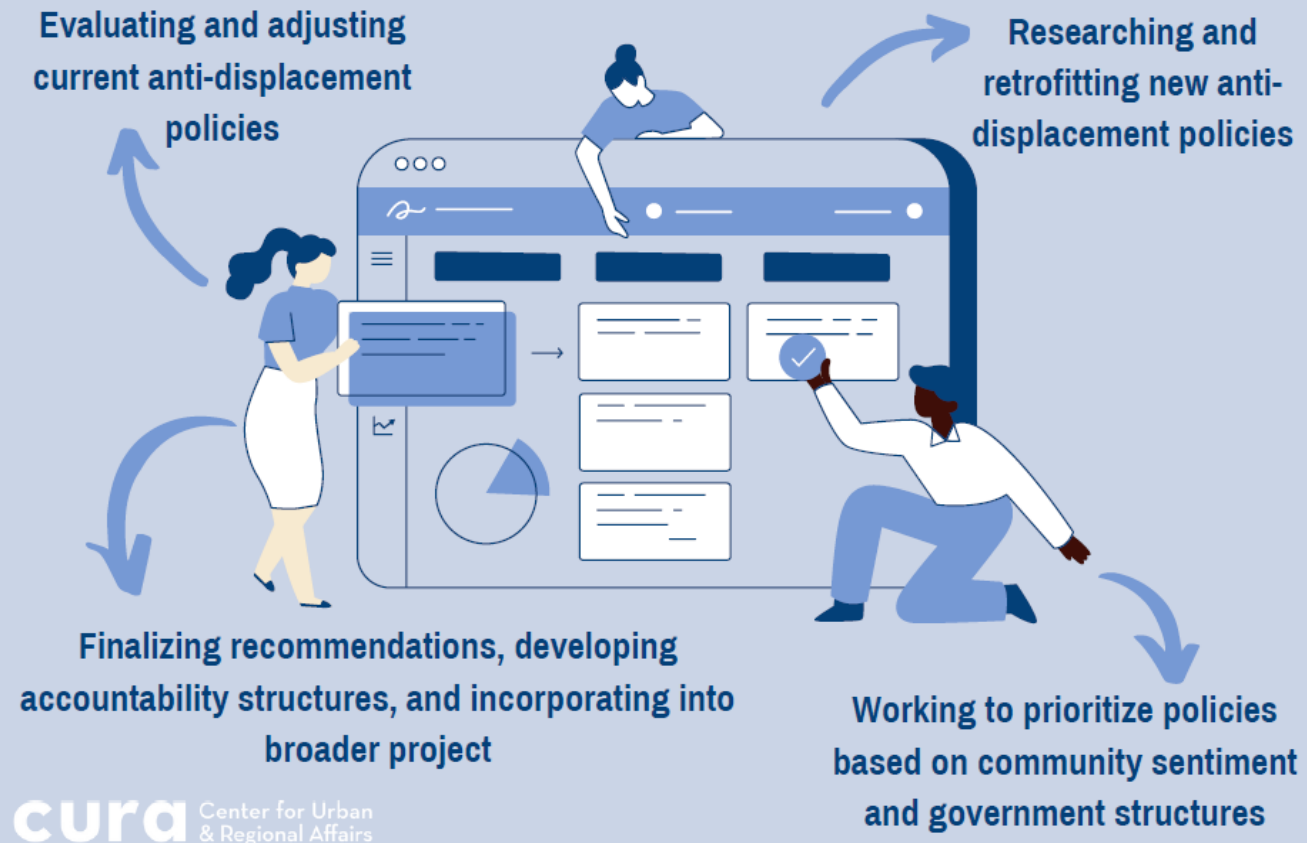
Workshop #3: Business and Cultural Displacement

The December 10 workshop focused on defining cultural displacement, looking at existing cultural placekeeping efforts, and digesting quantitative and qualitative research done for the project.



What's Next: Policy Prioritization, Research, and Finalizing Recommendations

The work group will have two more workshops in January and February that will focus on policy prioritization, policy research, finalizing recommendations, and incorporating these into the broader BLRT project.



Cultivate Arts 2022 Recap



What is Cultivate Arts?

- Initiative to engage communities along the Metro Blue Line Extension corridor to build artist capacity, demonstrate arts and placemaking tools, and activate the creative economy through culturally representative arts-based activities.
- Events in 2022 from July to Nov



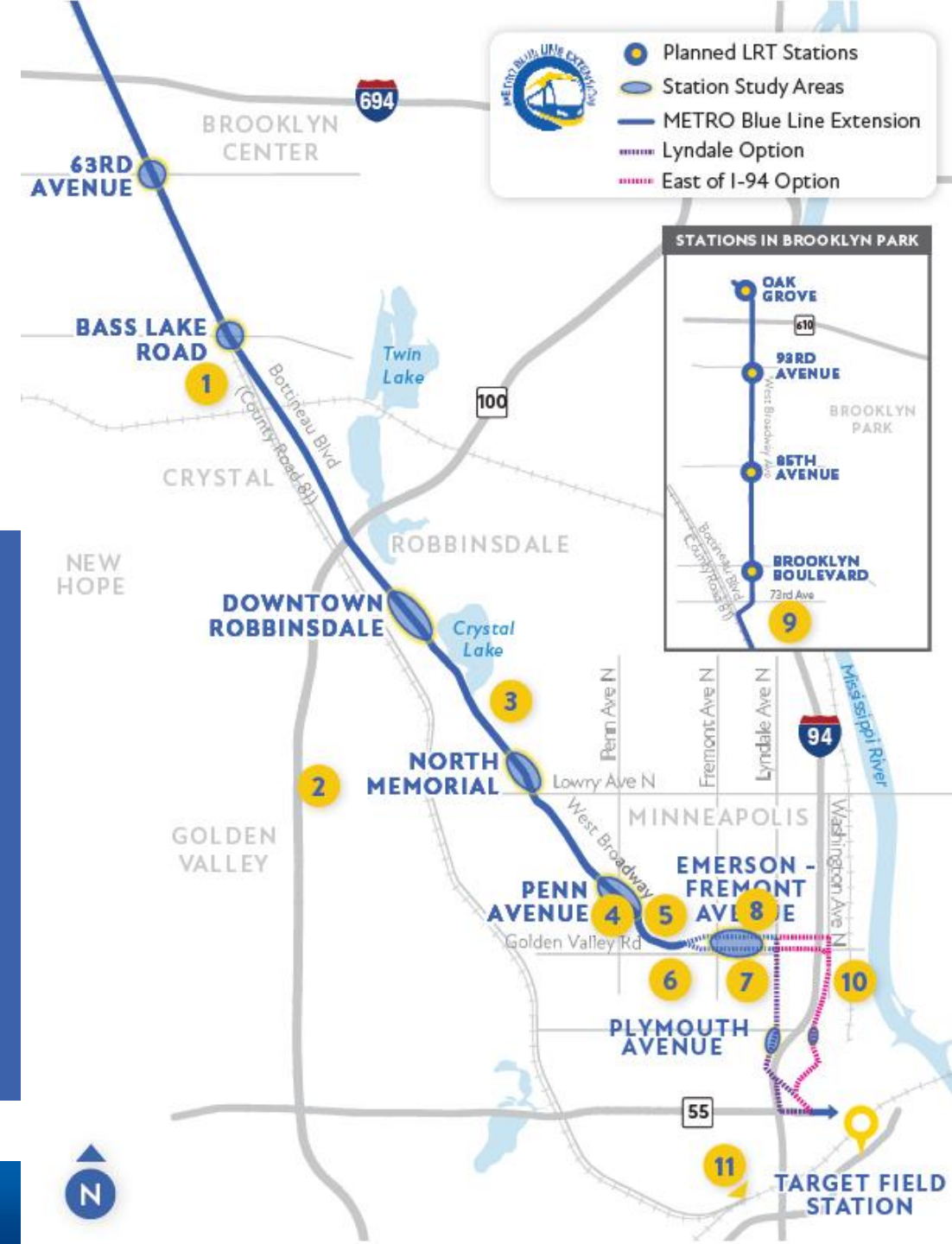
Sam King at Asian Media Access event



Engagement along the Blue Line route

31 EVENTS | **5,000+** RESIDENTS ENGAGED

- Cultivate Arts Event Locations**
- 1** **Becker Park**
Afrocontigbo
On the Ground Up
Malik De Universo
 - 2** **Valley Community Church**
HeArt Connection
 - 3** **Lakeview Terrace Park**
Malik De Universo
 - 4** **Capri Theater**
Dis Place Ment Home
 - 5** **West Broadway Farmer's Market**
On the Ground Up
 - 6** **St. Andrew's Episcopal Church**
Rails to Souls
 - 7** **Open Streets West Broadway**
At the Front of the Line
Robot Mobile Disco
AMA Project Resonance
 - 8** **Sanctuary Covenant Church**
Rails to Souls
 - 9** **Zanewood Community School**
HeArt Connection
Robot Mobile Disco
 - 10** **Meteor Bar**
Robot Mobile Disco
 - 11** **FAIR School in Minneapolis**
Kickin It With Culture

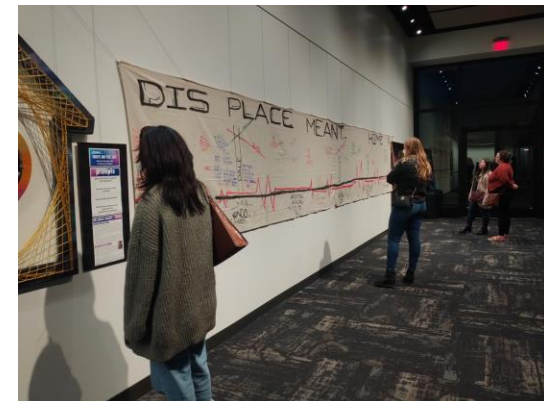


Artist Activities (1/2)

- Events at Becker Park
- Workshops with 5th grade class at Zanewood
- Farmers market community conversations
- Photos of members at Liberian church
- Project flyers posted
- Robot Mobile Disco



Five to Ten



*Dis Place
meant
Home*

Artist Activities (2/2)

- Events downtown at Fair School
- Community mapping and cultural Asian dance performance
- Interactive art installation about displacement at Capri Theater
- Community mural project
- Free tie-dyeing and painting activities



Kulture Klub Collaborative

Cultivate Arts Impact

- 5,000+ community members directly engaged
- 31 total events
- BIPOC and historically disenfranchised communities saw increased engagement
- Removed barriers for entry
- Met community where they were at and brought them along



More info and links

- [Mybluelineext.org/Cultivate](https://mybluelineext.org/Cultivate)



- Contact:

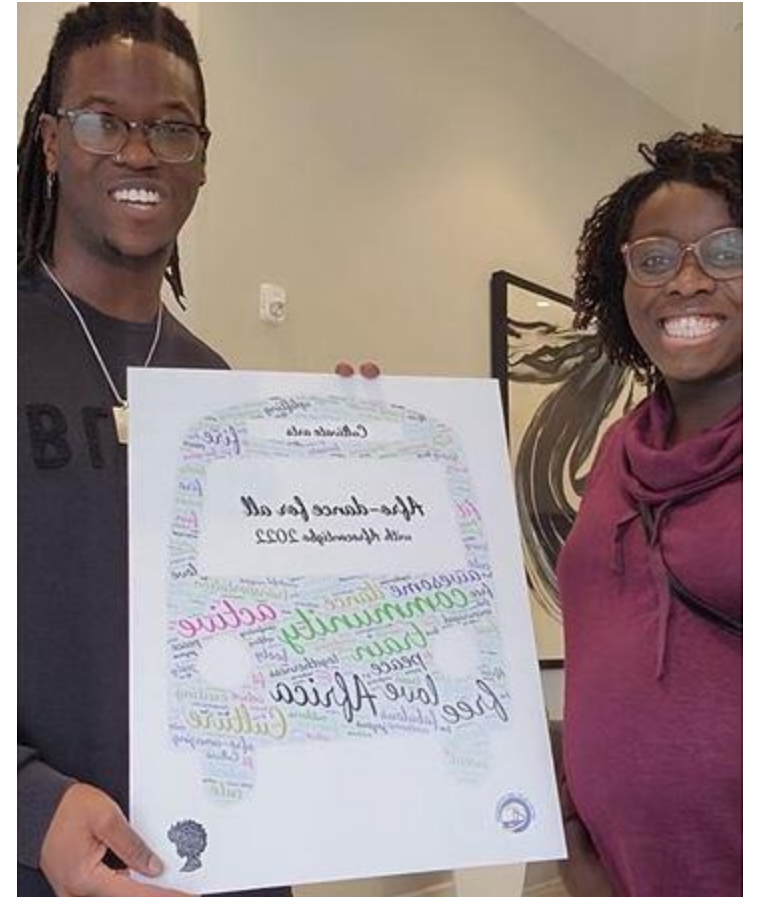
Sam King, Cultivate Arts Engagement Lead,
Hennepin County // Samuel.King@hennepin.us



Rail to Souls event



Open Streets West Broadway



AfroContigbo-Afrodance for All



Discussion questions



Discussion questions (via Menti)

- What would the community/organization you represent think about the schedule and decision process presented above?
- Is there any information you need to help answer questions you receive about the project?
- What other outreach/engagement tips would you suggest for 2023?



Go to www.menti.com
and use code 3479 7913

Next meeting: February 1

