

# Community Advisory Committee

July 12, 2023

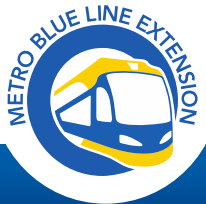


BROOKLYN PARK | CRYSTAL | ROBBINSDALE | MINNEAPOLIS



# Today's Topics

- Call to Order and Welcome
- Upcoming Meetings/Attendance
- Approval of June 7 Meeting Minutes
- Project Update
- Outreach and Engagement Update
- Minneapolis Design Update
- Discussion and Members Feedback
- Adjourn



# Approval of June 7 Meeting Minutes



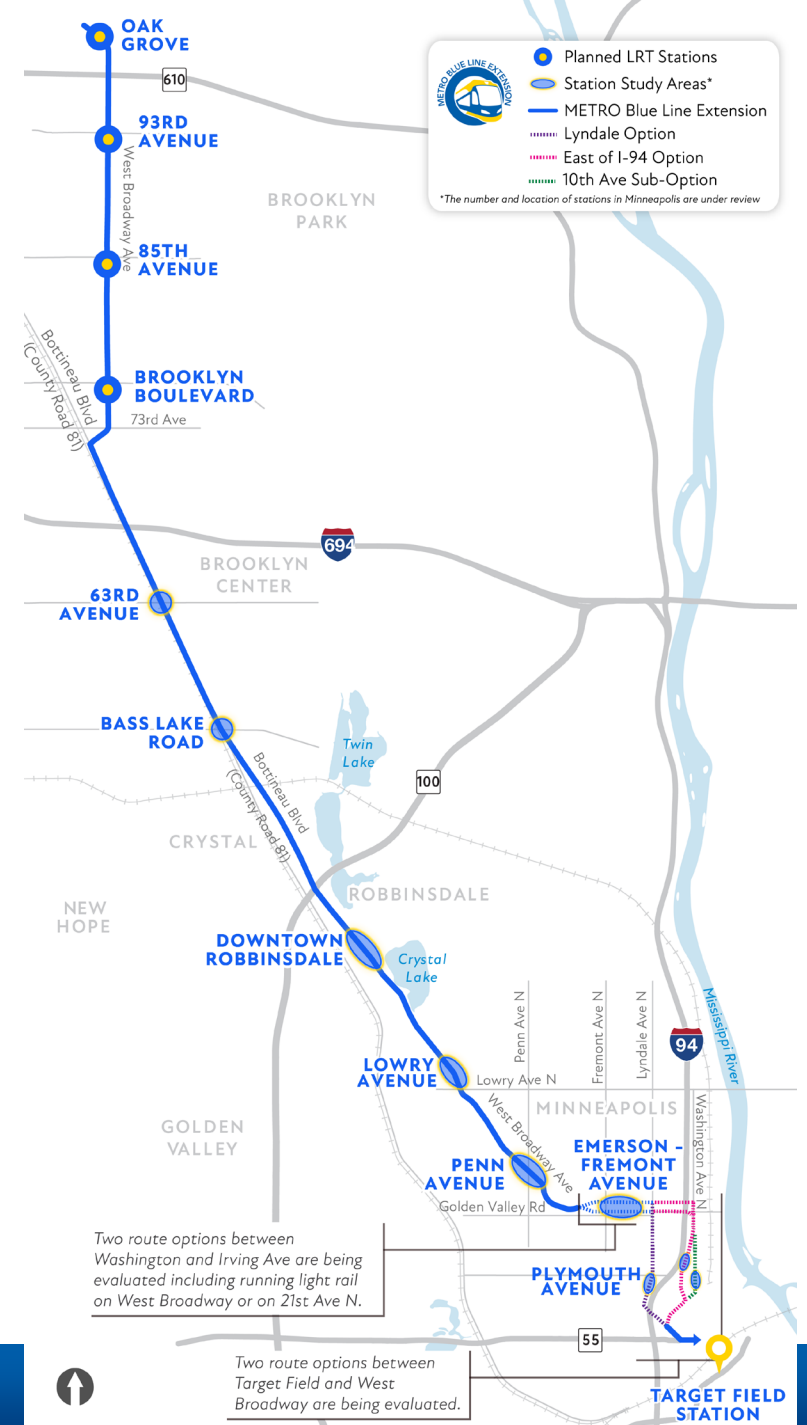
---

# Project Update



# Blue Line LRT Extension

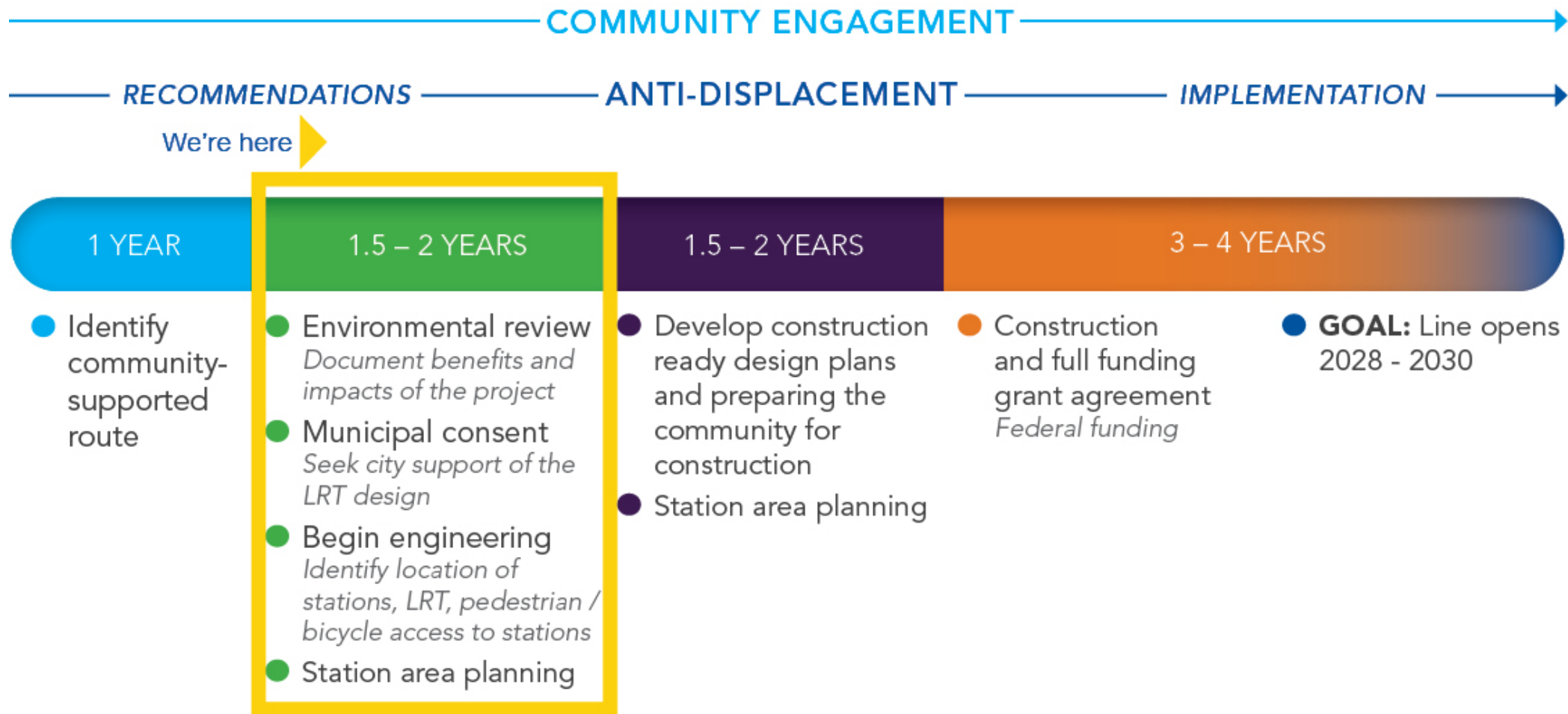
- BLRT Extension located in Hennepin County directly connecting downtown Minneapolis, Robbinsdale, Crystal and Brooklyn Park and communities in the northwest metro
- Modified route adopted in June 2022
- Public engagement ongoing, including an Anti-Displacement Workgroup
- Anti-Displacement Recommendations Report published for comment in May 2023
- Policy recommendation on route in Summer 2023 where Supplemental Draft Environmental Impact Statement includes more than one option



# Project Schedule

**Blue Line Extension Community Supported Route:**

- Best meets the project Principles and Goals
- Grounded in community feedback through collaboration with stakeholders
- Supported by project corridor communities and decision-makers



*LRT projects are complex and unforeseen challenges arise. Schedules and timelines are subject to change.*





---

# Outreach and Engagement Update





# Engagement Framework: Statutory Requirements

---

- BLRT Community Engagement Meetings
  - Quarterly meetings in consultation with community groups; documented and provided to the CMC
  - Will include representatives from Met Council, Henn County, MnDOT, and all corridor cities
  - By July 1, the BLRT Project Team must coordinate with community groups to establish a framework for community engagement meetings



# Draft Engagement Framework: Comments

---

- Relevant comments on the framework document:
  - Outreach to reach the senior community (1 comment)
  - Document accessibility: translate document, increase font (2 comments)
  - Recommendations on engagement strategies, activities and community outreach: mailers, social media, talk to businesses, video interviews (4 comments)
- Themes of other comments received: safety on transit, route design/location, property loss, preference for expanding bus service over LRT, project timeline, support or opposition of project (44 comments)



# Finalized Engagement Framework Document

---

- Changes to the document included:
  - Increased the size of the text for readability
  - Translated this document into Spanish
  - Added a focus for reaching and providing access to project information to the elderly
  - Added a section for how to request meetings/events from the Project's Outreach Coordinators
  - Added a section about our partnership with Elevate Hennepin
- Final English and Spanish versions are available at: [bluelineext.org](https://www.bluelineext.org)



# Upcoming Minneapolis Meetings

---

- **Summer Block Party along 21st Avenue North**  
Saturday, July 22, 1:00 p.m. – 4:00 p.m.  
On 21st Avenue, east of Lyndale Avenue
- **Minneapolis Community Meeting for East of I-94 – Option #1**  
Saturday, July 22, 11:00 a.m. – 12:30 p.m.  
Twin Cities International School, 277 North 12th Avenue, Minneapolis, MN 55401
- **Minneapolis Community Meeting for East of I-94 – Option #2**  
Tuesday, July 25, 6:00 p.m. – 7:30 p.m.  
Metro Transit North Loop Garage  
Training Room 104, 812 North 7th Street, Minneapolis, MN 55411
- **Minneapolis Community Meeting for East of I-94 – Option #3**  
Thursday, July 27, 6:00 p.m. – 7:30 p.m.  
Virtual Meeting
- **Metro Blue Line Extension Quarterly Meeting #1**  
Wednesday, August 23, 6:00 p.m. – 8:00 p.m.  
Capri Theater, 2027 West Broadway Avenue, Minneapolis, MN 55411



---

# Minneapolis Design Update



# Design Principles

---

Maintain BLRT Purpose and Need

Minimize travel time

Maximize ridership

Maximize community and economic development

Maximize Federal Transit Administration New Starts project rating

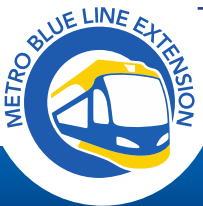
Pursue opportunities to serve even more people and destinations

Complement existing and planned METRO transitways

Minimize residential, commercial and environmental impacts

Support safety and connections prioritizing people walking, biking, and rolling

Maximize carbon pollution reduction



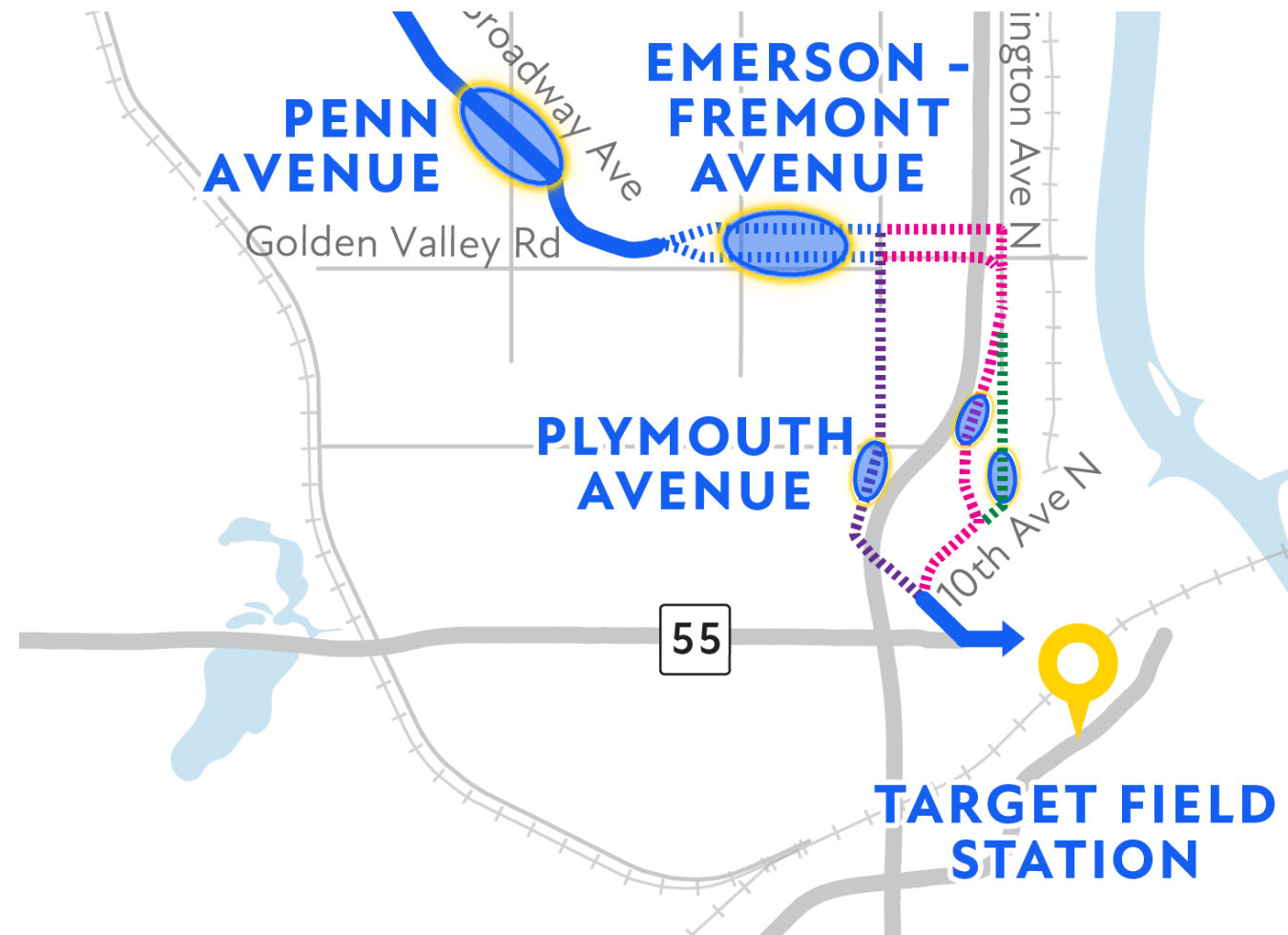
# Minneapolis Design Decisions

- Decisions required to publish the Supplemental Draft EIS:
  - Number and Location of Stations
  - Penn Avenue Station Location
  - Route option from Target Field Station to West Broadway (**next month**)
  - Route option for LRT on West Broadway or 21<sup>st</sup> Avenue (**next month**)



# Minneapolis Decisions

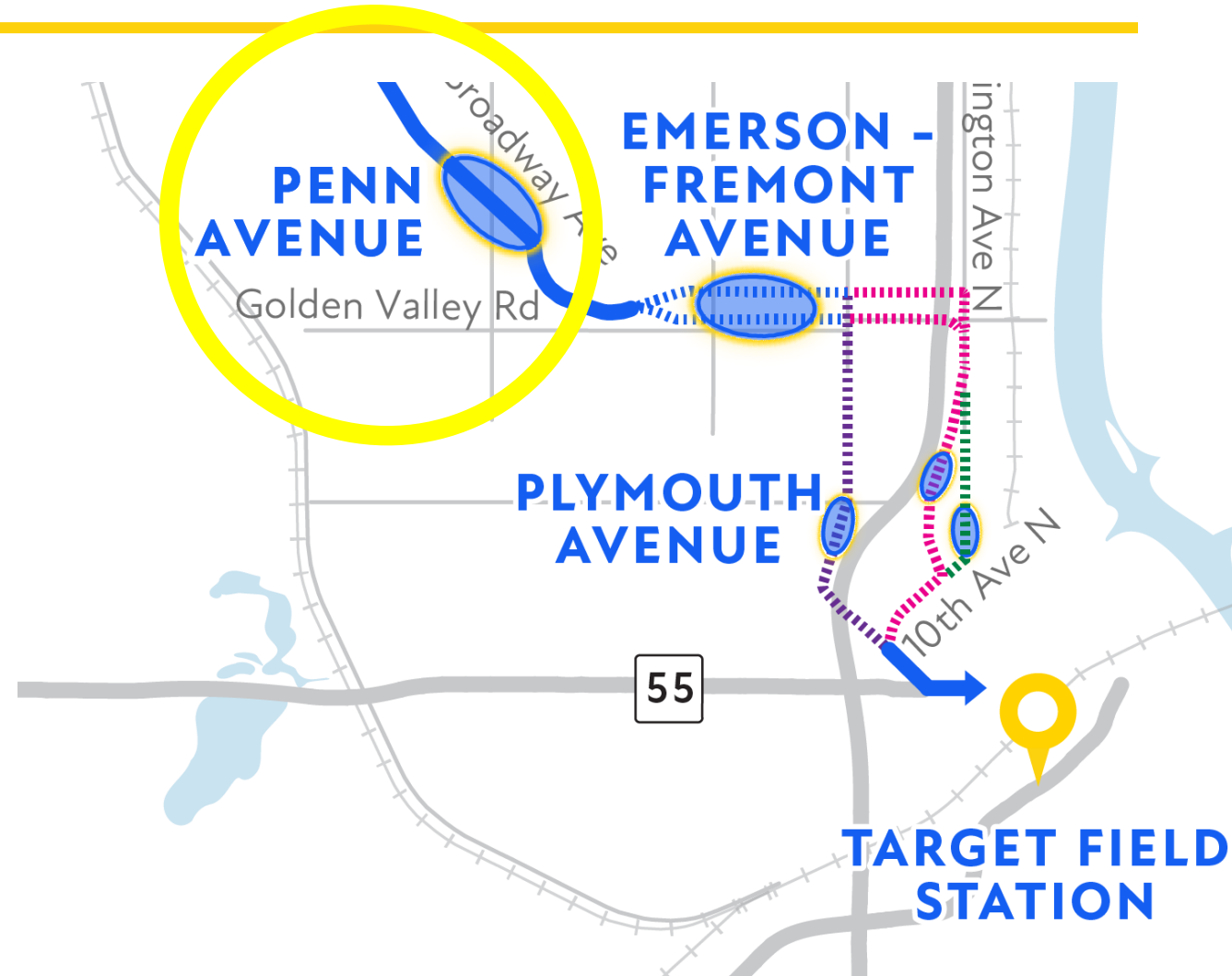
- Penn Avenue Station Refinement
- Station number (1 or 2) and placement in the area between Knox Avenue and Lyndale Avenue
- Route from Target Field Station to 10<sup>th</sup> Ave N. or Lyndale



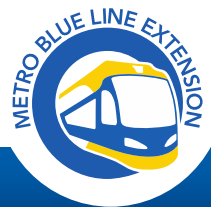
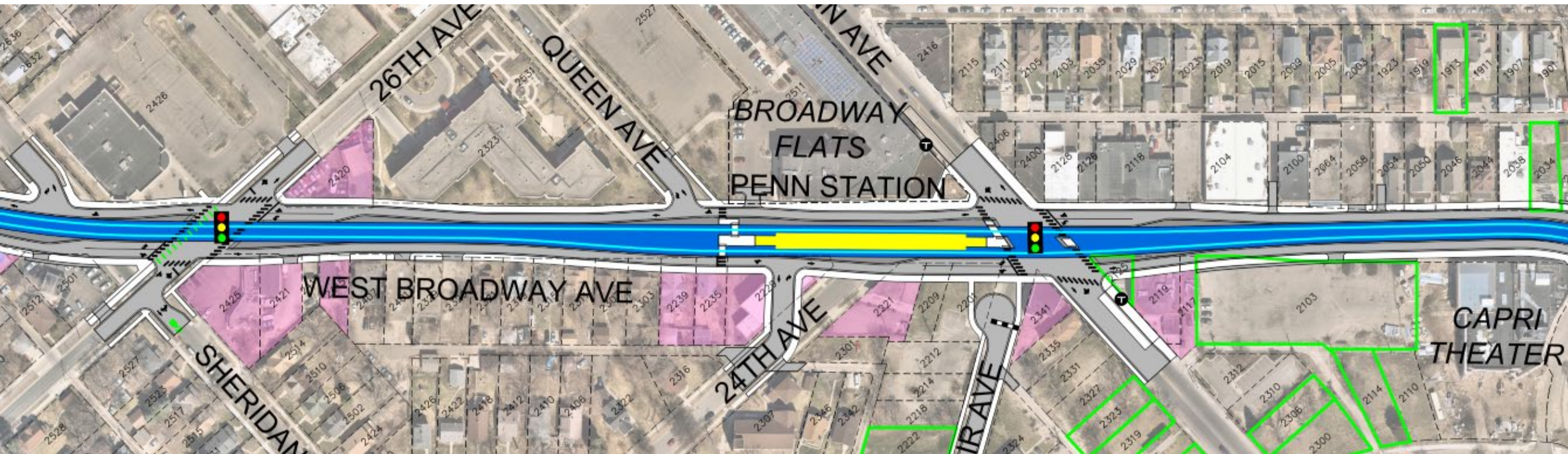


# Penn Ave Station

- Center platform
- North side of Penn intersection
- Penn Ave intersection operations will be refined in design
- Continue to coordinate station access

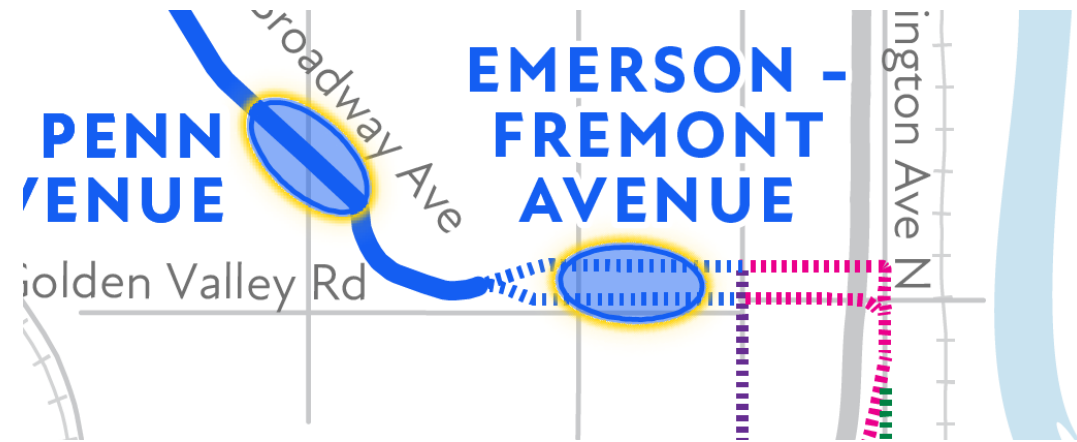


# Penn Ave Station

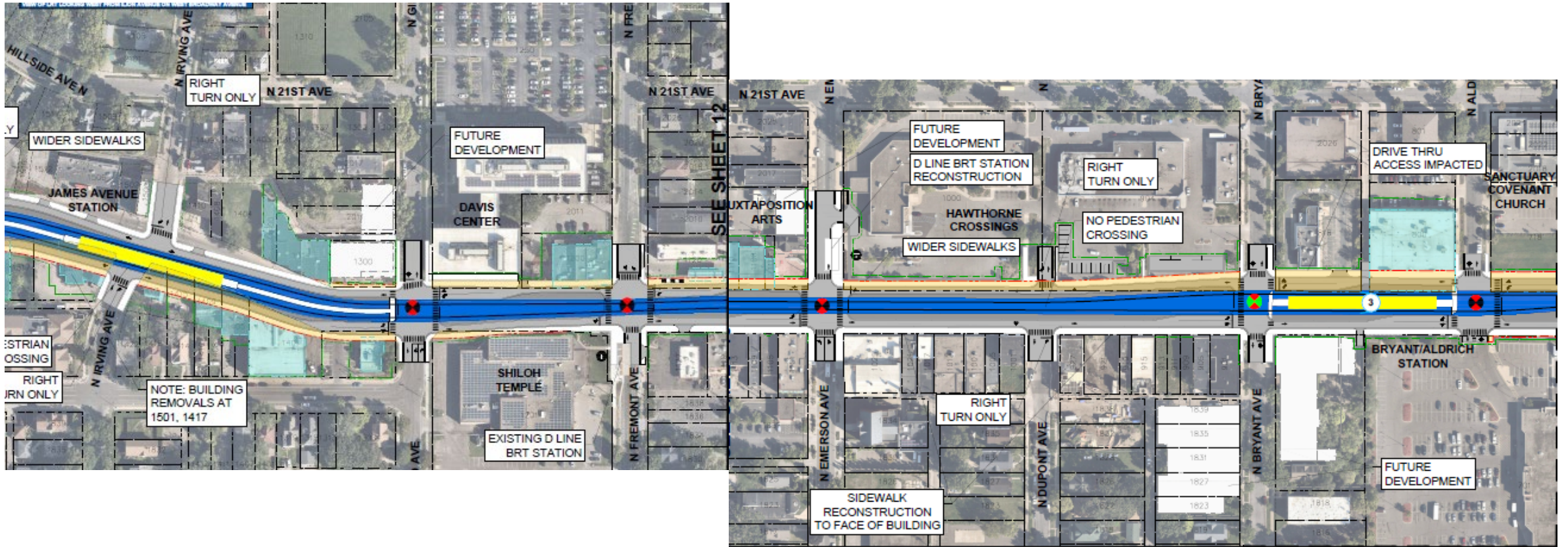


# Stations between Knox Ave and Lyndale Ave

- Originally one station was proposed near Emerson-Fremont
- Community asked to evaluate an additional station
- Two stations can be included in either W. Broadway or 21<sup>st</sup> Ave options



# 2 Stations at James Ave and Bryant/Aldrich along West Broadway



# 2 Stations at James Ave and Bryant/Aldrich along 21<sup>st</sup> Ave



# Target Field Station to 10<sup>th</sup> Ave N. or Lyndale

- Studied route options:
  - Olson Memorial Hwy or North 7th Street to Lyndale Avenue
  - North 7th South to 10th Avenue North then either:
    - Along the east side of I-94 parallel to Washington Avenue; or
    - Continuing on 10<sup>th</sup> Avenue to Washington Avenue
- Both routes connect to 21st Avenue and/or West Broadway
- Both route options will travel over I-94 on a bridge
  - Bridge/Structure details will be coordinated with Met Council, Hennepin County, Minneapolis, MnDOT



# Route from Target Field to 10<sup>th</sup> Ave N. or Lyndale –N 7th



# Stay connected

---

- **BlueLineExt.org**
  - For the latest project updates and sign up for our newsletter
  - Connect with staff for your question schedule a presentation
- Follow us:
  - Twitter: @BlueLineExt
  - Facebook: MetroBlueLineExtensio



A service of the Metropolitan Council

COUNTY'S *Transit*  
Improvement  
BOARD