

# Corridor Management Committee

July 13, 2023



BROOKLYN PARK | CRYSTAL | ROBBINSDALE | MINNEAPOLIS



# Today's Topics

- Call to Order and Welcome & Public Invitation
- Approval of June 8 Meeting Summary
- Community and Business Advisory Committees Report
- Project Update
- Outreach and Engagement Update
- Minneapolis Design Update
- Next Steps



The public can submit written comments to Nkongo Cigolo ([Nkongo.Cigolo@metrotransit.org](mailto:Nkongo.Cigolo@metrotransit.org))

# Approval of June 10 Meeting Summary



# Public Invitation

---

- 15 minutes allotted to receive public comments
  - Up to 3 minutes per speaker
- Speakers who have pre-registered will be called in order
- If there are more speakers than the time allotted, comments may be submitted in writing to [Nkongo.Cigolo@metrotransit.org](mailto:Nkongo.Cigolo@metrotransit.org)



---

# Community and Business Advisory Committees Report





---

# Project Update



# Blue Line LRT Extension

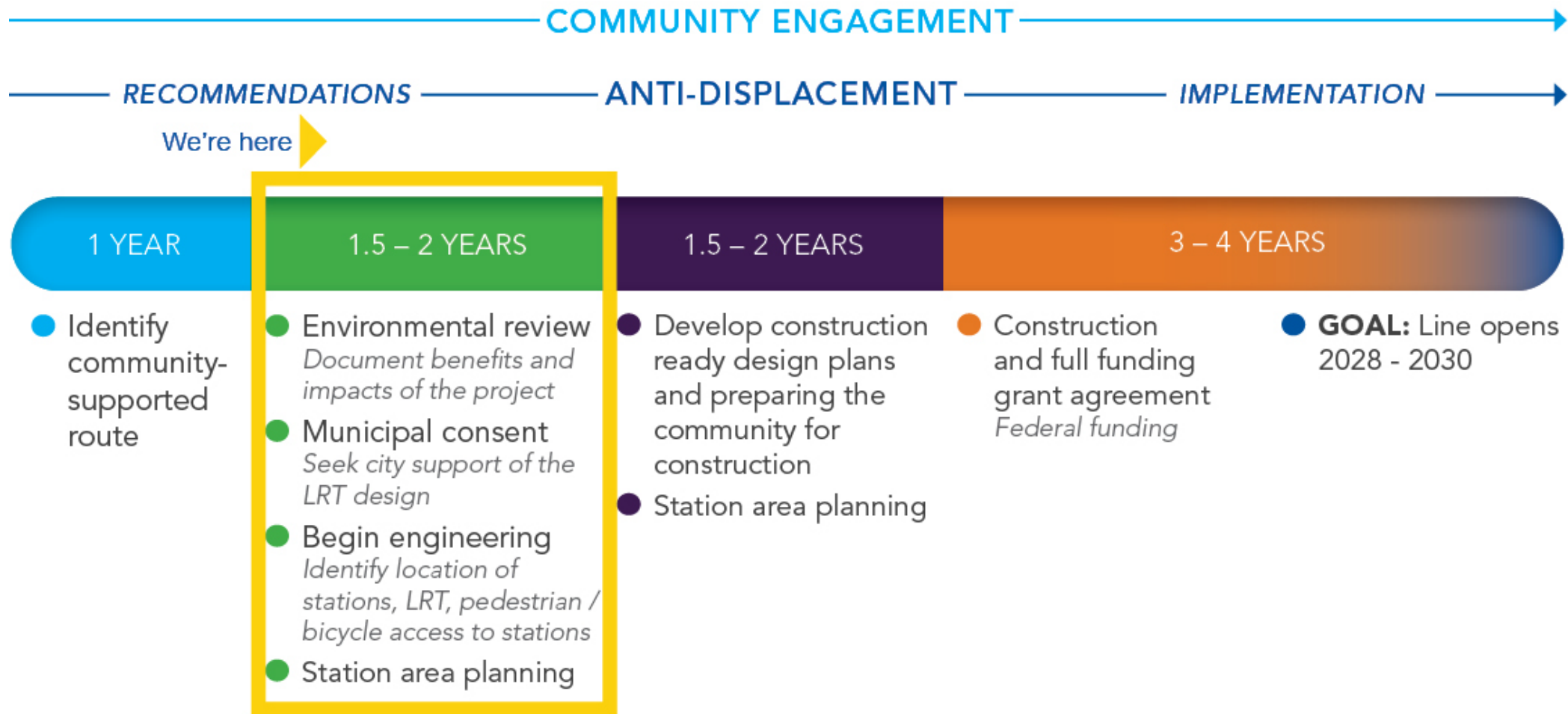
- BLRT Extension located in Hennepin County directly connecting downtown Minneapolis, Robbinsdale, Crystal and Brooklyn Park and communities in the northwest metro
- Modified route adopted in June 2022
- Public engagement ongoing, including an Anti-Displacement Workgroup
- Anti-Displacement Recommendations Report published for comment in May 2023
- Policy recommendation on route in Summer 2023 where Supplemental Draft Environmental Impact Statement includes more than one option



# Project Schedule

**Blue Line Extension Community Supported Route:**

- Best meets the project Principles and Goals
- Grounded in community feedback through collaboration with stakeholders
- Supported by project corridor communities and decision-makers



*LRT projects are complex and unforeseen challenges arise. Schedules and timelines are subject to change.*





# Timeline to Publish SDEIS and Initiate Municipal Consent

	Feb	Mar	Apr	May	Jun	Jul	Aug	Sep	Oct	Nov	Dec	Jan	Feb	Mar	Apr	May	Jun	Jul	Aug
<b>Corridor Management Committee (CMC)</b>	X	X	X	X	X														
<b>Brooklyn Park</b>	X			X	X														
<b>Crystal</b>		X		X	X														
<b>Robbinsdale</b>			X	X	X														
<b>Minneapolis</b>				X	X														
<b>Anti-Displacement Workgroup</b>	X	X	X	X	X														
<b>Supplemental Environmental Impact Statement</b>																			
<b>Municipal Consent</b>																			

FTA Review #1

FTA Review #2

FTA Review #3

Publish SDEIS

Prepare SFEIS...

Municipal Consent...



---

# Outreach and Engagement Update



# Engagement Framework: Statutory Requirements

---

- BLRT Community Engagement Meetings
  - Quarterly meetings in consultation with community groups; documented and provided to the CMC
  - Will include representatives from Met Council, Henn County, MnDOT, and all corridor cities
  - By July 1, the BLRT Project Team must coordinate with community groups to establish a framework for community engagement meetings



# Draft Engagement Framework: Comments

---

- Relevant comments on the framework document:
  - Outreach to reach the senior community (1 comment)
  - Document accessibility: translate document, increase font (2 comments)
  - Recommendations on engagement strategies, activities and community outreach: mailers, social media, talk to businesses, video interviews (4 comments)
- Themes of other comments received: safety on transit, route design/location, property loss, preference for expanding bus service over LRT, project timeline, support or opposition of project (44 comments)



# Finalized Engagement Framework Document

---

- Changes to the document included:
  - Increased the size of the text for readability
  - Translated this document into Spanish
  - Added a focus for reaching and providing access to project information to the elderly
  - Added a section for how to request meetings/events from the Project's Outreach Coordinators
  - Added a section about our partnership with Elevate Hennepin
- Final English and Spanish versions are available at: [bluelineext.org](https://www.bluelineext.org)





# Upcoming Minneapolis Meetings

---

- **Summer Outdoor Event**  
Saturday, July 22, 1:00 p.m. – 4:00 p.m.  
Sanctuary Covenant Church, 2018 Aldrich Avenue North, Minneapolis, MN 55411
- **Minneapolis Community Meeting for East of I-94 – Option #1**  
Saturday, July 22, 11:00 a.m. – 12:30 p.m.  
Twin Cities International School, 277 North 12th Avenue, Minneapolis, MN 55401
- **Minneapolis Community Meeting for East of I-94 – Option #2**  
Tuesday, July 25, 6:00 p.m. – 7:30 p.m.  
Metro Transit North Loop Garage  
Training Room 104, 812 North 7th Street, Minneapolis, MN 55411
- **Minneapolis Community Meeting for East of I-94 – Option #3**  
Thursday, July 27, 6:00 p.m. – 7:30 p.m.  
Virtual Meeting
- **Metro Blue Line Extension Quarterly Meeting #1**  
Wednesday, August 23, 6:00 p.m. – 8:00 p.m.  
Capri Theater, 2027 West Broadway Avenue, Minneapolis, MN 55411



---

# Minneapolis Design Update



# Design Principles

---

---

Maintain BLRT Purpose and Need

---

Minimize travel time

---

Maximize ridership

---

Maximize community and economic development

---

Maximize Federal Transit Administration New Starts project rating

---

Pursue opportunities to serve even more people and destinations

---

Complement existing and planned METRO transitways

---

Minimize residential, commercial and environmental impacts

---

Support safety and connections prioritizing people walking, biking, and rolling

---

Maximize carbon pollution reduction

---



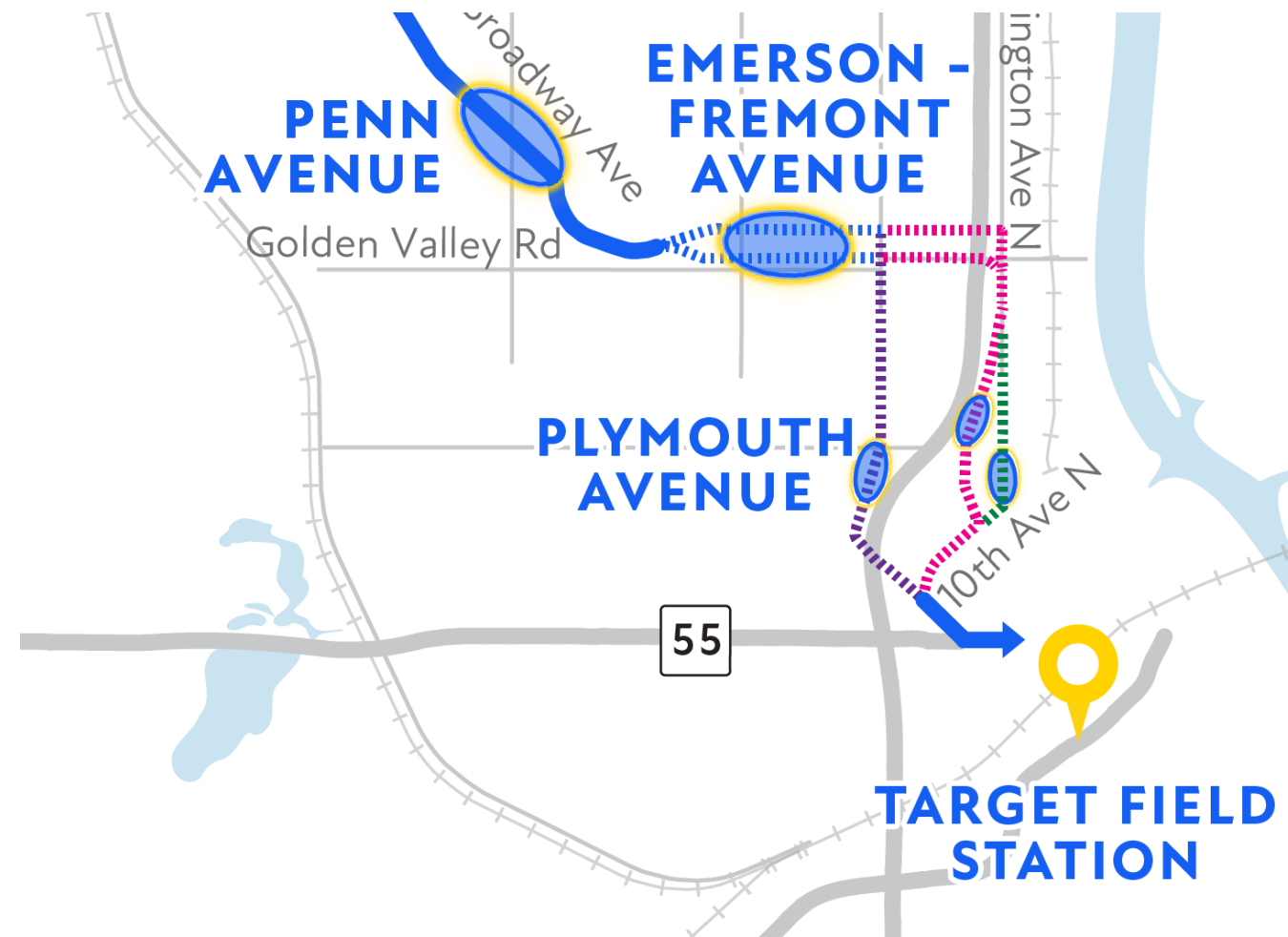
# Minneapolis Design Decisions Summary

- Decisions required to publish the Supplemental Draft EIS:
  - Number and Location of Stations
  - Penn Avenue Station Location
  - Route option from Target Field Station to West Broadway (**next month**)
  - Route option for LRT and associated roadway improvements on West Broadway or 21<sup>st</sup> Avenue (**next month**)



# Minneapolis Design Decisions Update

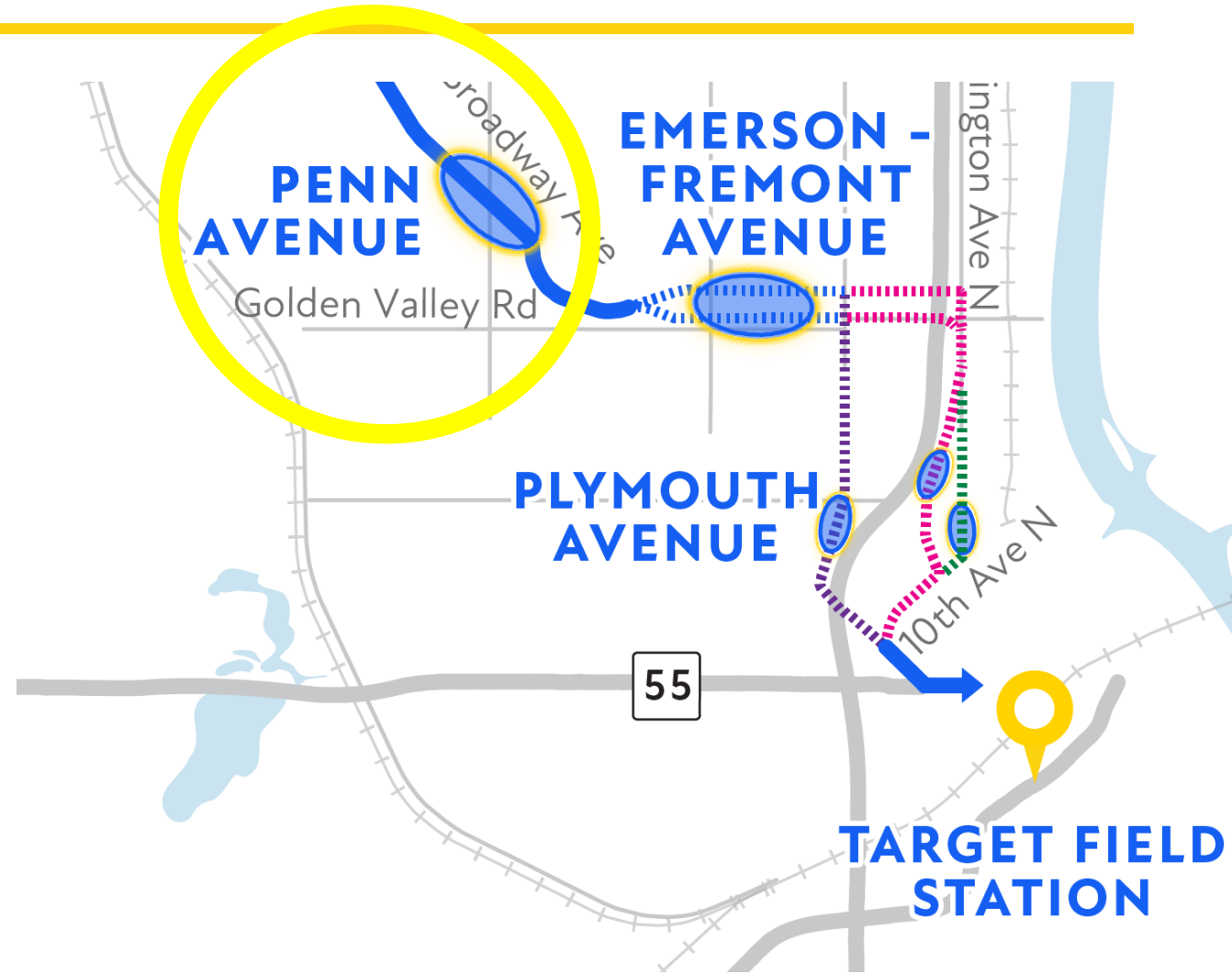
- Penn Avenue Station Refinement
- Station number (1 or 2) and placement in the area between Knox Avenue and Lyndale Avenue
- Route from Target Field Station to 10<sup>th</sup> Ave N. or Lyndale



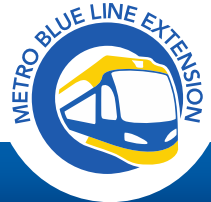
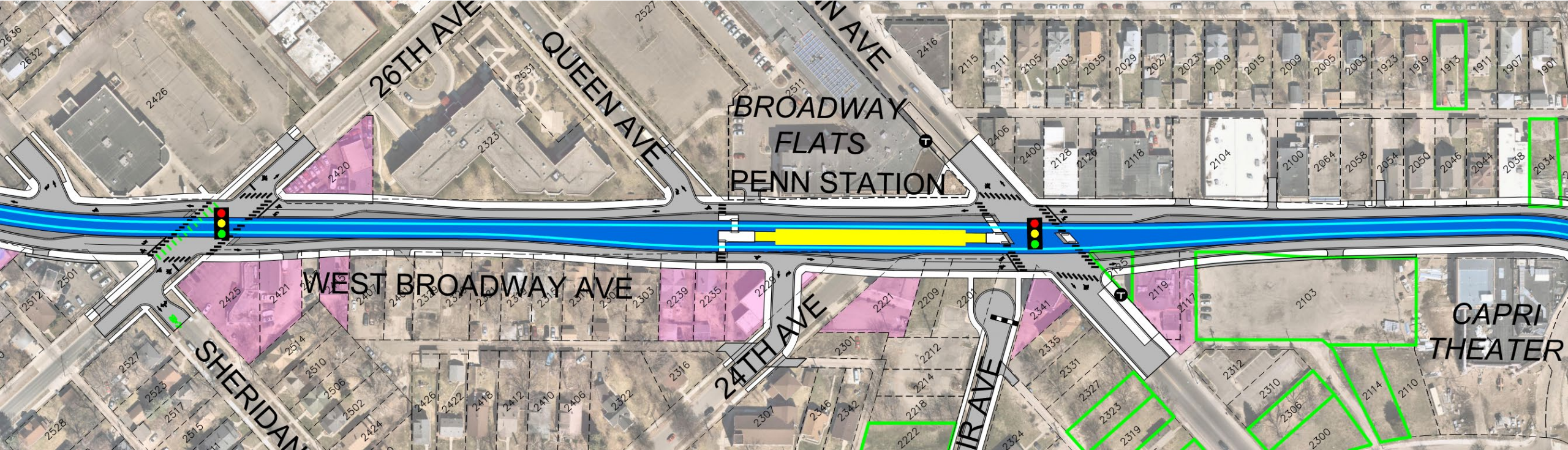


# Penn Ave Station

- Center platform
- North side of Penn intersection
- Penn Ave intersection operations will be refined in design
- Continue to coordinate station access



# Penn Ave Station



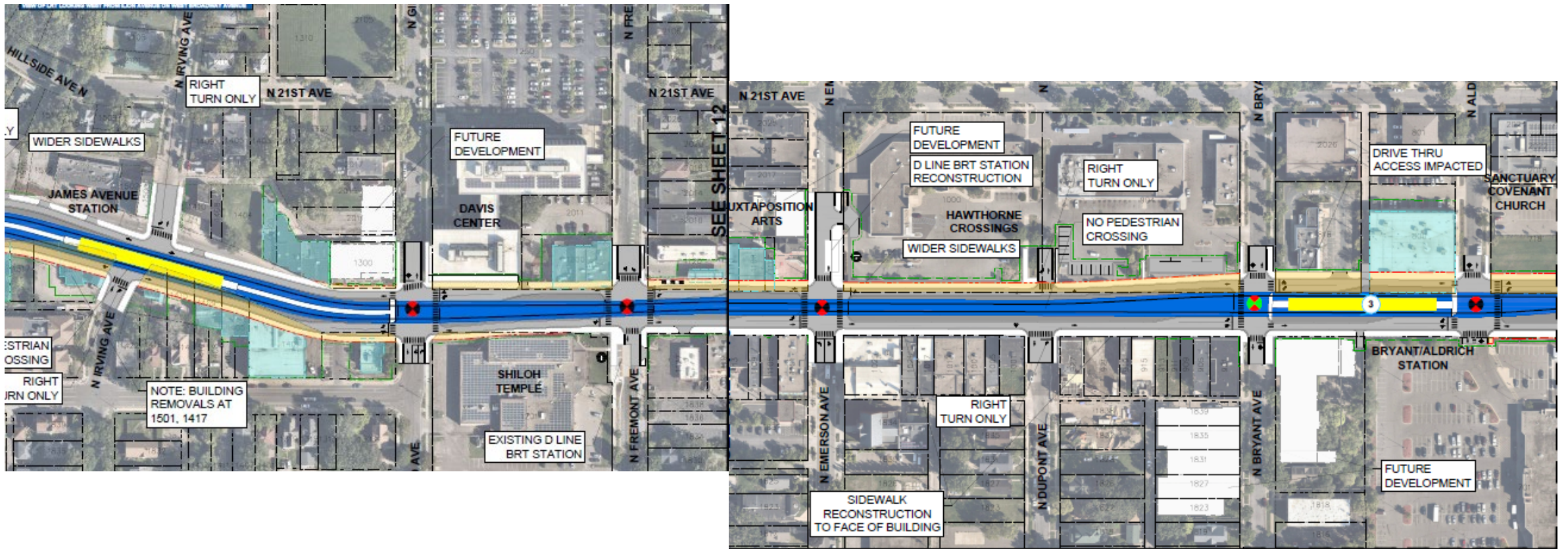
# Stations between Knox Ave and Lyndale Ave

- Originally one station was proposed near Emerson-Fremont
- Community asked to evaluate an additional station
- Two stations can be included in either W. Broadway or 21<sup>st</sup> Ave options





# 2 Stations at James Ave and Bryant/Aldrich along West Broadway









# Target Field Station to 10<sup>th</sup> Ave N. or Lyndale

- Studied route options:
  - Olson Memorial Hwy or North 7th Street to Lyndale Avenue
  - North 7th South to 10th Avenue North then either:
    - Along the east side of I-94 parallel to Washington Avenue; or
    - Continuing on 10<sup>th</sup> Avenue to Washington Avenue
- Both routes connect to 21st Avenue and/or West Broadway
- Both route options will travel over I-94 on a bridge
  - Bridge/Structure details will be coordinated with Met Council, Hennepin County, Minneapolis, MnDOT



# Route from Target Field to 10<sup>th</sup> Ave N. or Lyndale –N 7th





# Minneapolis Design Decisions – Aug CMC

- Remaining decisions required to publish the Supplemental Draft EIS:
  - Route option from Target Field Station to West Broadway
  - Route option for LRT and associated roadway improvements on West Broadway or 21<sup>st</sup> Avenue



# Stay connected

---

- **BlueLineExt.org**
  - For the latest project updates and to sign up for our newsletter
  - Connect with staff for your questions or schedule a presentation
- Follow us:
  - Twitter: @BlueLineExt
  - Facebook: MetroBlueLineExtension



A service of the Metropolitan Council

COUNCIL'S *Transit*  
Improvement  
BOARD