

# Corridor Management Committee

October 10, 2024



BROOKLYN PARK | CRYSTAL | ROBBINSDALE | MINNEAPOLIS



# Today's Topics

- Call to Order & Welcome
- Approval of August 8 Meeting Summary
- Community and Business Advisory Committee Reports
- Outcomes of Municipal Consent
- Environmental Update
- Schedule Update



# Approval of August 8 Meeting Summary



---

# Community and Business Advisory Committees Report

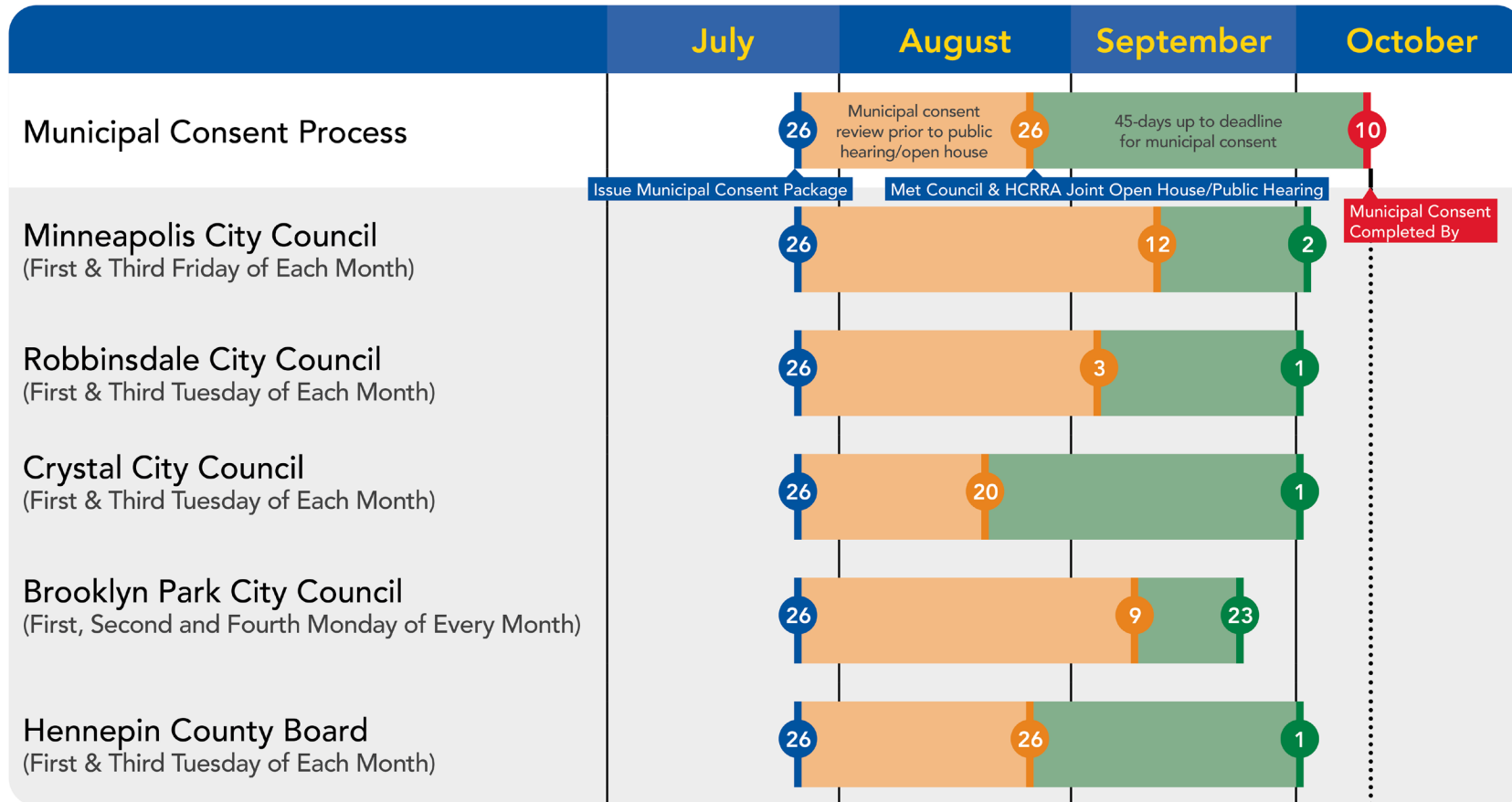


---

# Outcomes of Municipal Consent



# Municipal Consent Timeline



● Begin Municipal Consent Review

● Public Hearing

● Council/Board Action



# Municipal Consent Action

- Municipal Consent requires corridor Cities and Counties to approve the physical design of the LRT including:
  - Location
  - Length
  - Termini
  - General dimensions
  - Approximate station locations
- Municipal Consent plans were distributed at approximately 30% level of design



Brooklyn Park Municipal Consent Open House – September 9, 2024



# Municipal Consent Action cont.

---

- Recognize the collaboration and effort that each city and staff has committed to inform each vote
- Corridor Cities and Hennepin County have completed their Municipal Consent votes within the required timeline
  - All partners voted for approval of Municipal Consent
  - 33 of 38 votes cast were for approval
  - Each City included “priorities” in their city for the project





# Station Design Changes

---

- Changes to Scope
  - Addition of a station at Washington and W. Broadway
  - Relocate the 40<sup>th</sup> station to the north side of the intersection
- Continued evaluation of Lowry Station design
- Changes to be reflected in final design plans



# West Broadway Station

- Additional station at Washington Avenue and W. Broadway
  - Provides service to developing area of North Minneapolis



# Lowry Station

- Evaluate station design for:

- Better access to North Memorial Hospital
- Minimize impacts to the parkway and park trails
- Provide better neighborhood access to station

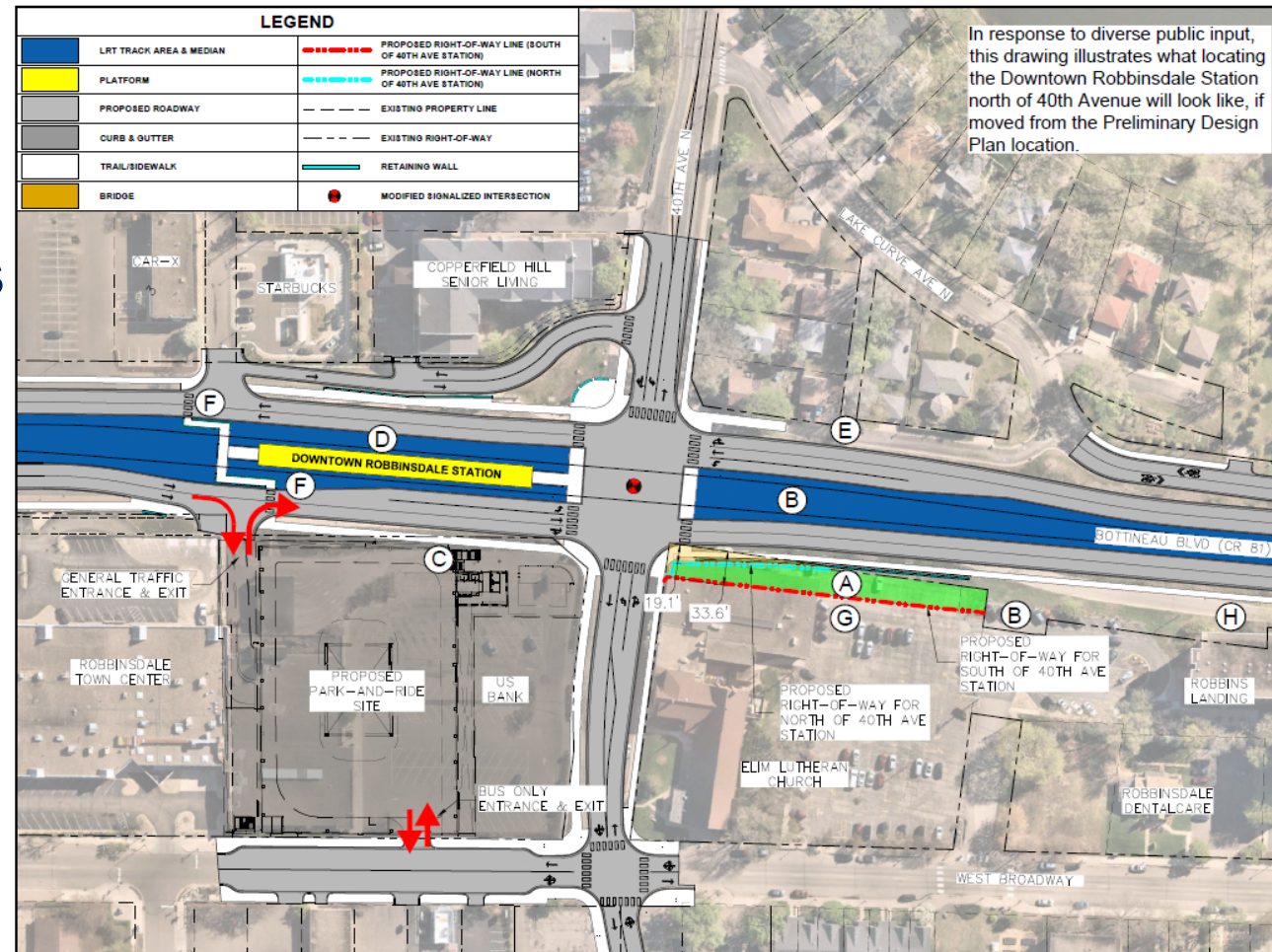


Municipal Consent Lowry Station Location

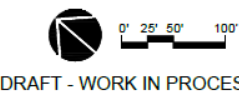


# 40<sup>th</sup> Station

- Relocate station to the north side
  - Reduces ROW impacts
  - Aligns with the park and ride
  - Closer to Downtown
  - Provides new pedestrian crossing



Concept for Station North of 40th

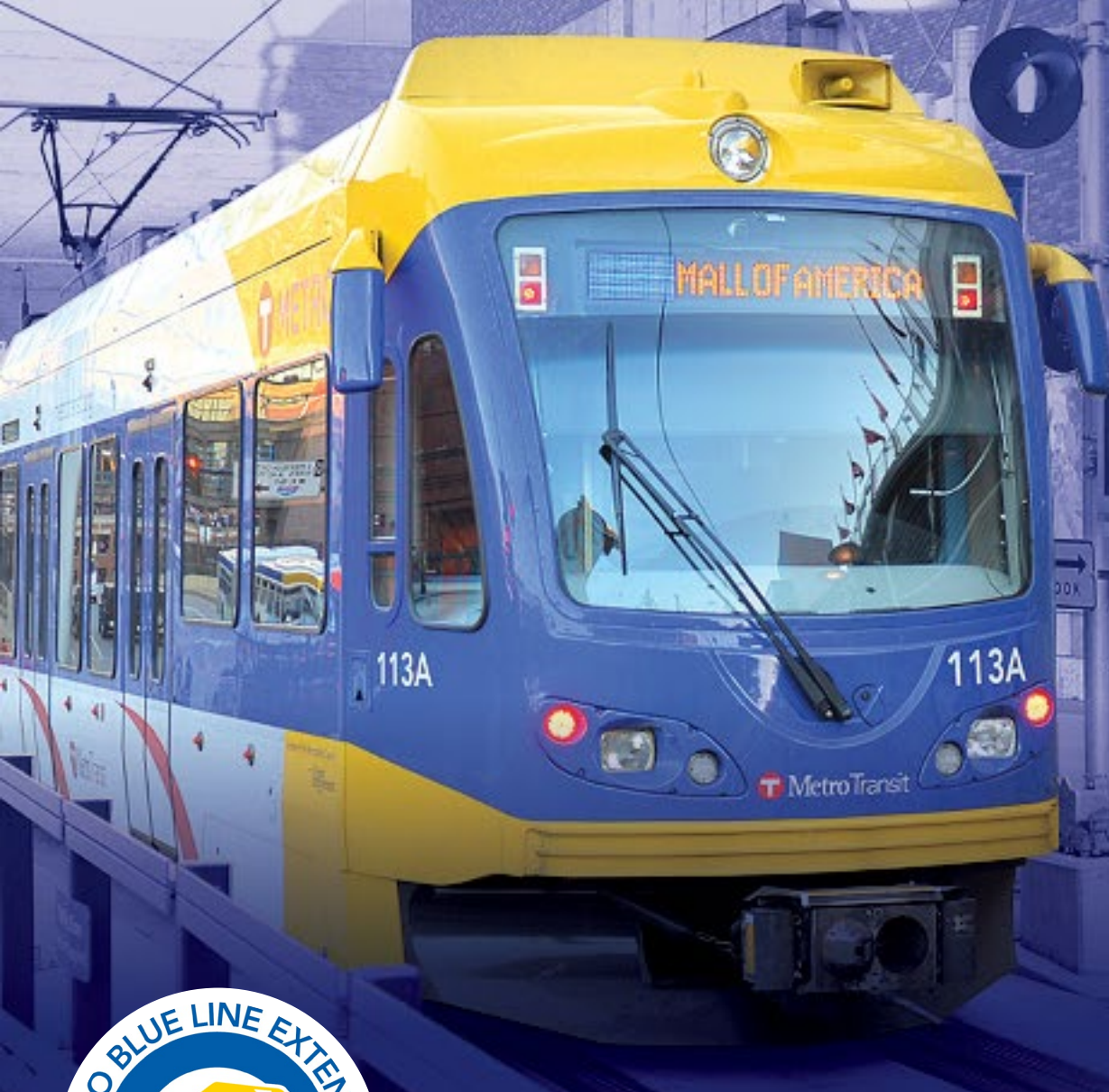


# Next Steps

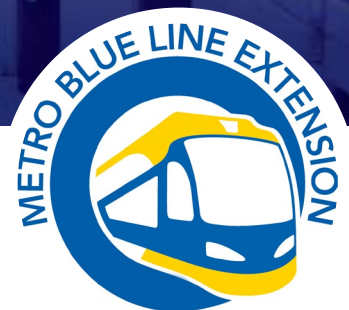
---

- Continue collaboration with each project partner on path to final plans
  - Refocus Issues Resolutions Team (IRT) to Design Resolutions Teams (DRT)
    - Dedicated and funded city staff
    - Regular scheduled meetings with each city to guide and inform the design
  - Confirm the “priorities” from Municipal Consent and determine if it is a scope change or refinement
  - Continue to advance plans from 30% to 60%
- Formal plan reviews by partners at 60% and 90%





# Environmental Update



BROOKLYN PARK | CRYSTAL | ROBBINSDALE | MINNEAPOLIS



# Environmental Review Next Steps

---

- Supplemental Final EIS/Amended Record of Decision
  - Analysis updates and FTA coordination: Fall 2024-Spring 2025
  - Mitigation Outreach: Fall 2024-Spring 2025
  - Anticipated publication Summer 2025
  - Mitigation implementation: Summer 2025 onward



# Supplemental Final EIS Next Steps

---

- Analysis updates
  - Additional noise and vibration analysis conducted
  - Additional historic/cultural surveys
- Agency coordination (MPRB, City partners, permitting agencies)
- Design updates to reflect 30% plan coordination and Municipal Consent
- Mitigation development





# Mitigation Development – Environmental Justice

---

- Mitigation within the Project is funded by the Project
- All mitigation subject to FTA approval
- Developing proposed mitigation for adverse impacts to EJ communities
  - Business impacts during construction
  - Loss of parking
  - Community character
  - Indirect displacement



# Mitigation Development - EJ

---

- Mitigation options under development/consideration:
  - Funding for community programs
  - Cultural placekeeping design groups
  - Storefront/virtual resource center
  - Workforce development/local hiring incentives for construction
  - Business support during construction
  - Parking solutions near Penn/W Broadway



# Mitigation Development Outreach

---

- Mitigation Outreach Framework: October 2024
- Mitigation Outreach: November 2024 – Summer 2025
- Mitigation Implementation: Summer 2025 – ongoing into construction



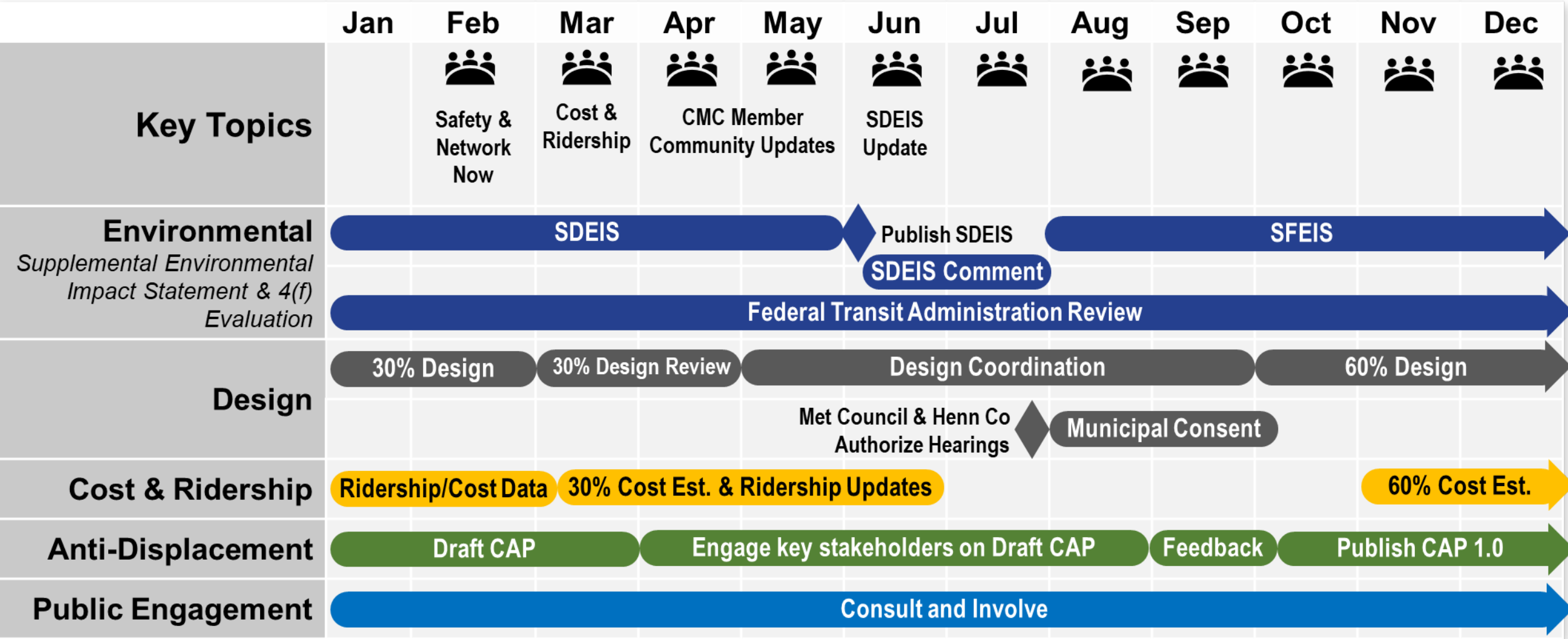
---

# Schedule Update



# 2024 Schedule

**WE ARE HERE**



# Major Project Milestones - Completed

Activity	Milestone Date
Publish SDEIS	June 14, 2024
Municipal Consent Start	July 26, 2024
Complete SDEIS Comment Period	Aug. 6, 2024
Municipal Consent Public Hearing	Aug. 26, 2024
Municipal Consent Action Completed	Oct. 2, 2024



# Major Project Milestones – Look Ahead

Activity	Milestone Date
NEPA Coordination and Reviews	Oct. 2024 – June 2025
Complete 60% Design	Q2 2025
Amended Record of Decision	July 2025
Complete 90% Design	Q4 2025
Project Rating Application Request to FTA	Aug. 2025
Project Risk Assessment w/ FTA	Sept. 2025
Complete 100% Design	Q1 2026
Full Funding Grant Application to FTA	Q1 2026
Award Major Construction Contract	Q4 2026



# Stay connected

---

- **BlueLineExt.org**
  - For the latest project updates and to sign up for our newsletter
  - Connect with staff for your questions or schedule a presentation
- Follow us:
  - Twitter: @BlueLineExt
  - Facebook: MetroBlueLineExtension

