

Corridor Management Committee

April 10, 2025



BROOKLYN PARK | CRYSTAL | ROBBINSDALE | MINNEAPOLIS



Today's Topics

- Call to Order & Welcome
- Approval of February 13 Meeting Summary
- Community and Business Advisory Committee Reports
- Anti-Displacement Community Prosperity Program Board Update
- Environmental Update
- Design Update
- Schedule Update
- Engagement Update



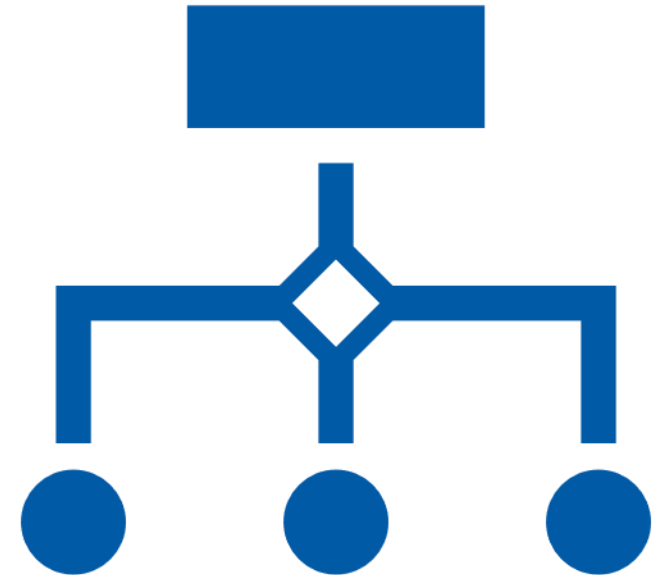
Staffing Updates - Welcome



- Alicia Vap – Project Director



- Anna Beth Gunderson – Station and Facilities Design Lead



Approval of February 13 Meeting Summary



The public can submit written comments to BLE Outreach (nkongo.cigolo@metrotransit.org)

Community and Business Advisory Committees Report



Anti-Displacement Community Prosperity Program Board Update



Environmental Update



Environmental Update

- Continuing development of Supplemental Final EIS
 - Monitoring Federal policy updates and undergoing reviews by FTA
 - Updated SFEIS structure and language in accordance with FTA guidance
- Coordinating with project partners to ensure project success for community, region, and state
- SFEIS anticipated publication - June 2025
- Amended Record of Decision - August 2025



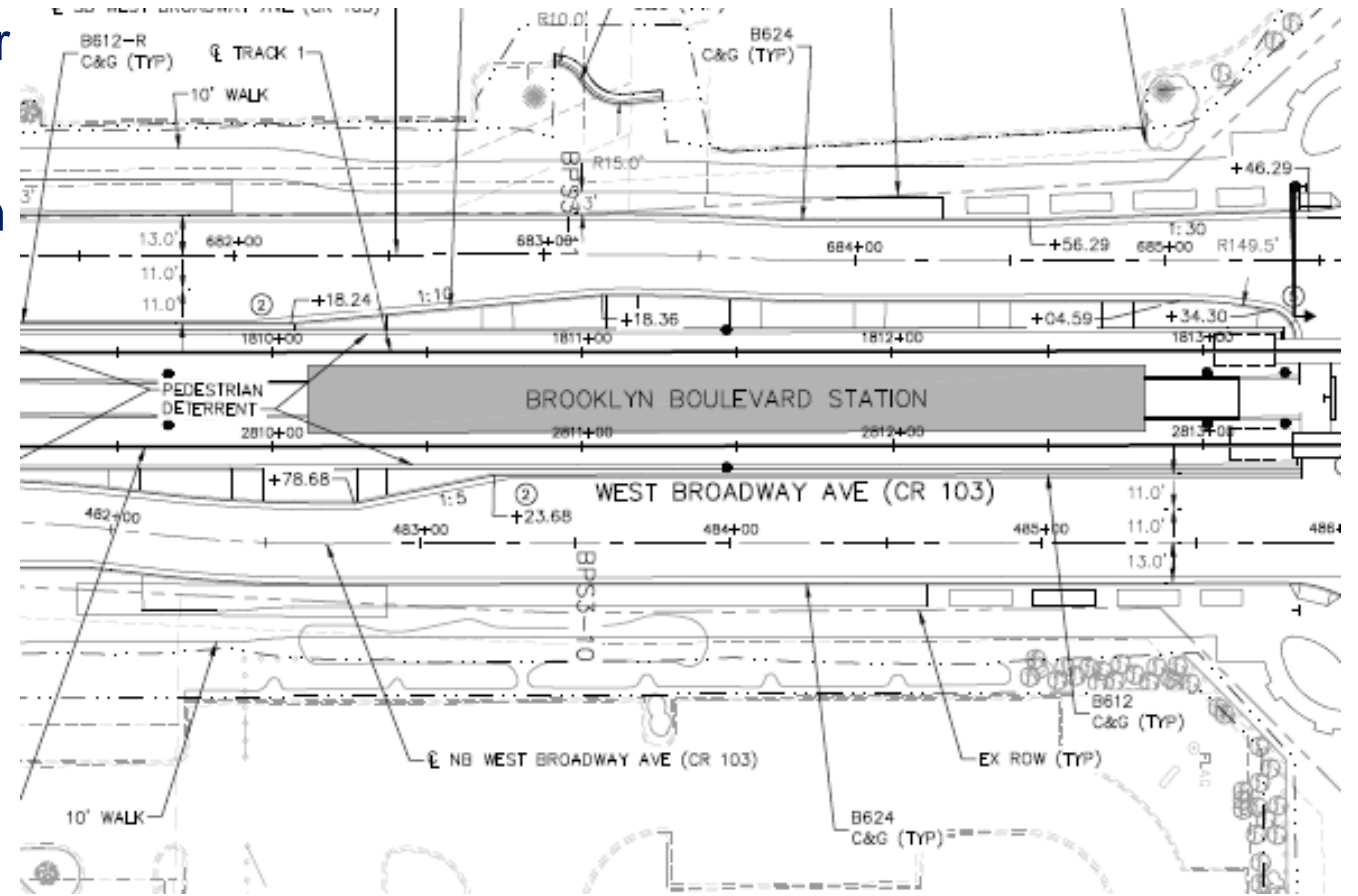
Design Update

60% Civil Plans Brooklyn Park & Crystal



60% Design Plans

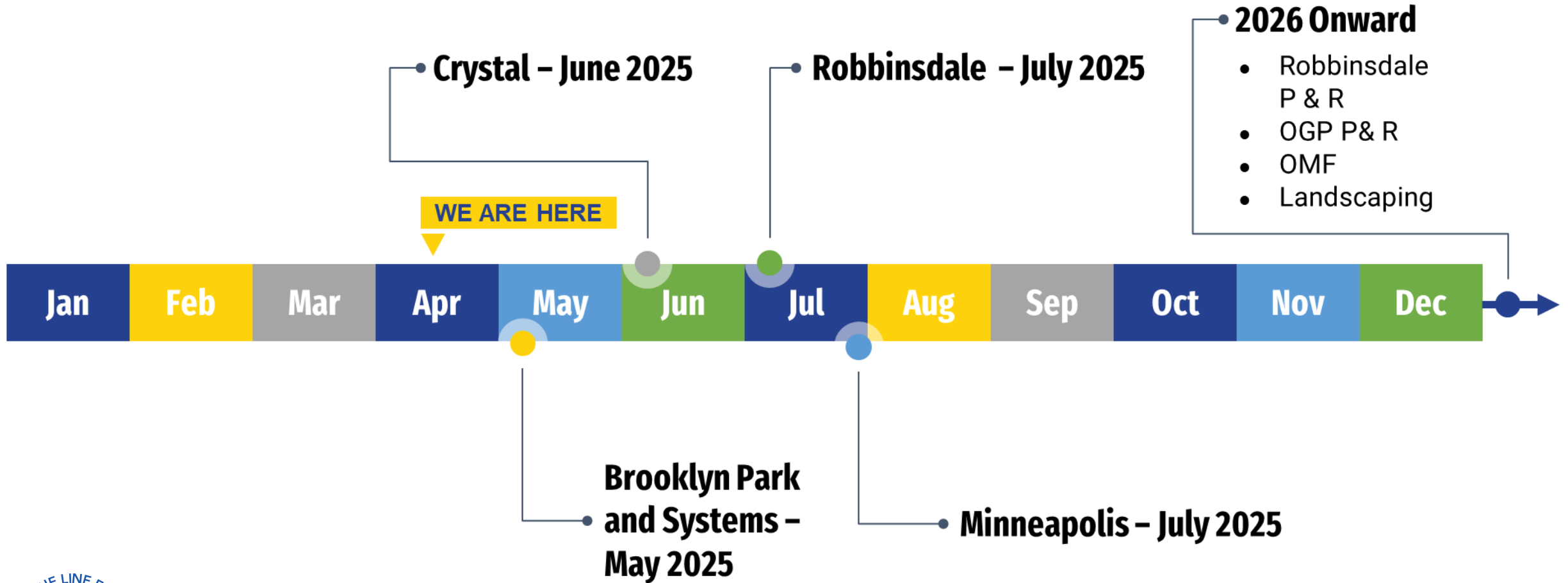
- Drawing package of 11x17 sheets created for each city and Lowry Station area
- Significantly more information and detail than 30%
- 13 disciplines represented in each package
- Roll plots will be developed for public meetings
- Details added post 60% via Cultural Placekeeping and continued work with project partners



Example of 60% design level plan sheet.



60% Design Release



Approximate dates for 60% completion and sent to cities. Comments will be incorporated in the 90% design plans.



Brooklyn Park Oak Grove Pkwy Station and Park & Ride



Site View



Oak Grove Pkwy Station and Park & Ride



Site Plan



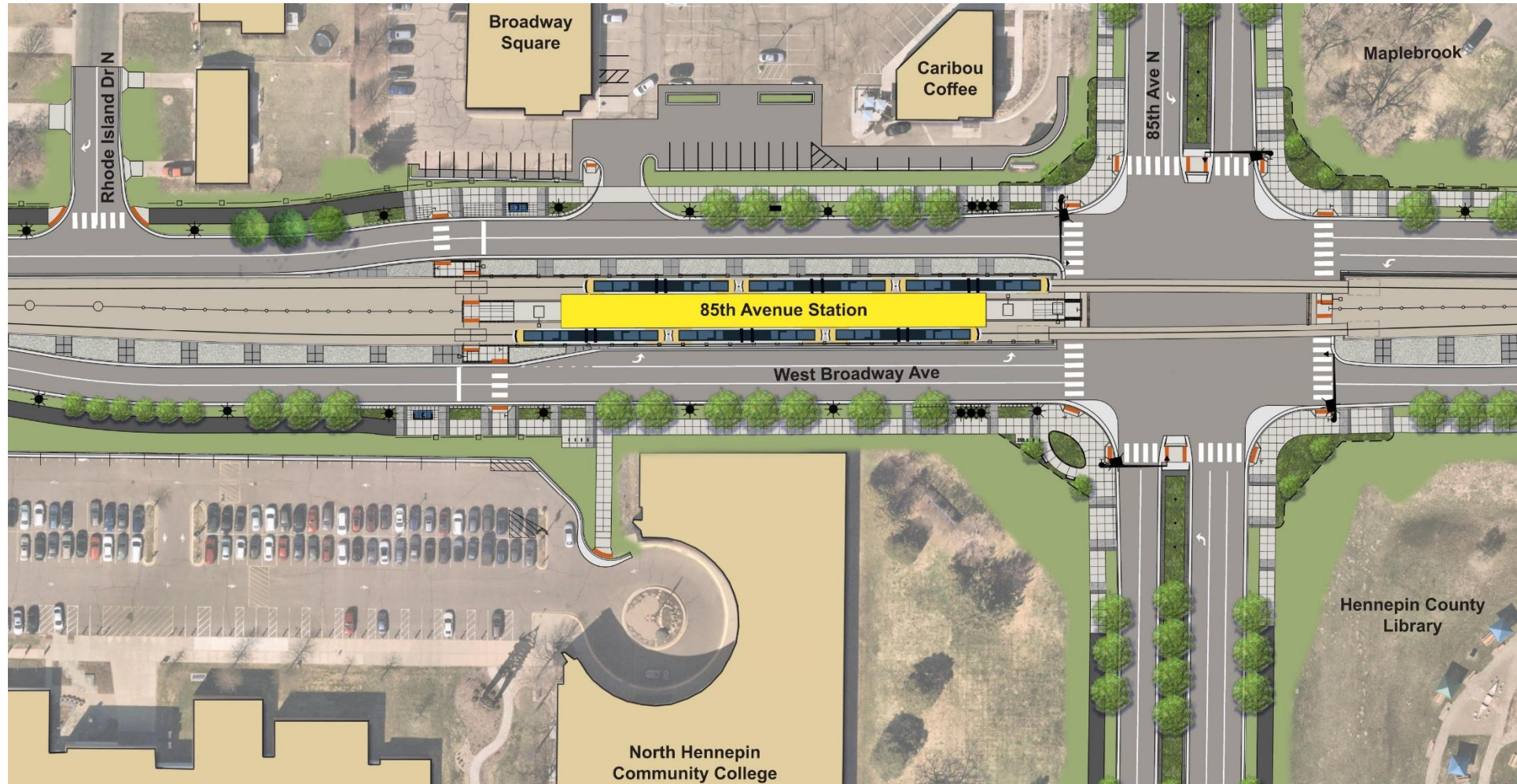
Oak Grove Pkwy Station and Park & Ride



View from
Station



85th Ave Station



Site Plan



85th Ave Station



Site View



85th Ave Station



Street View



63rd Ave Station and Park & Ride



Site Plan



63rd Ave Station and Park & Ride



Site View

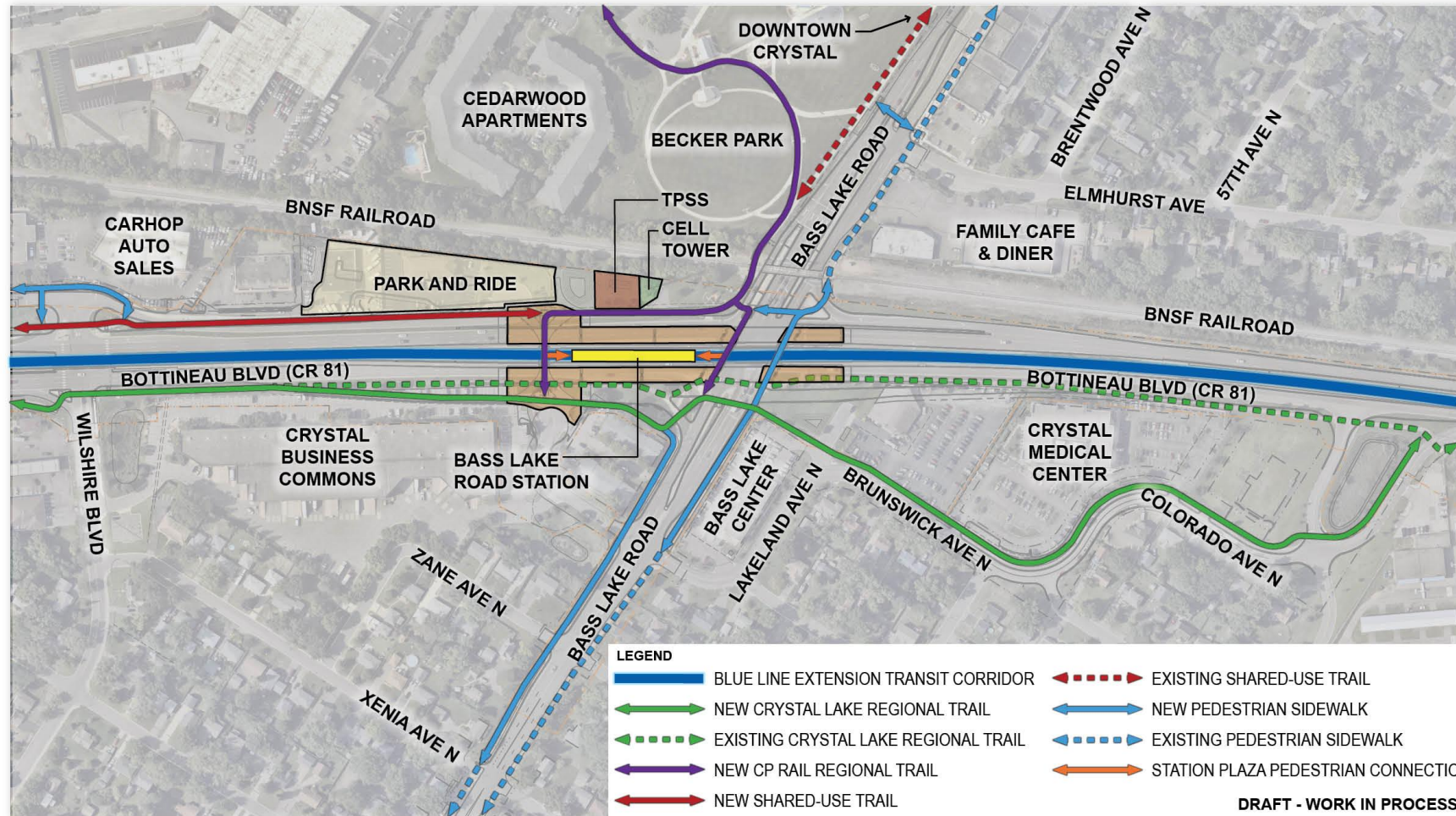
63rd Ave Station and Park & Ride



Street View



Crystal Bass Lake Rd Station

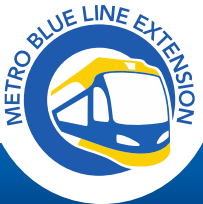
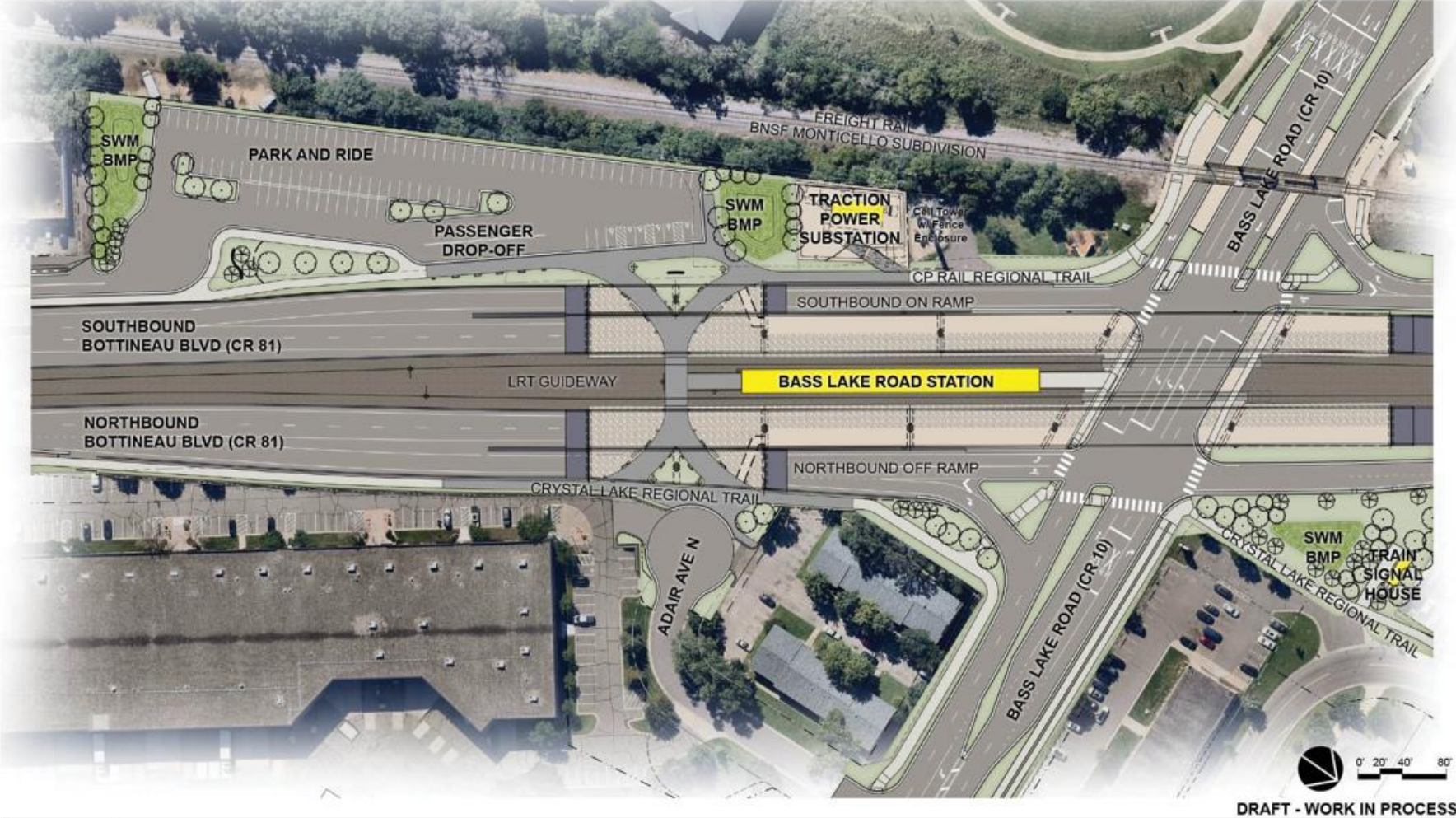


**BLUE LINE EXTENSION
Circulation Diagram**

April 8, 2025

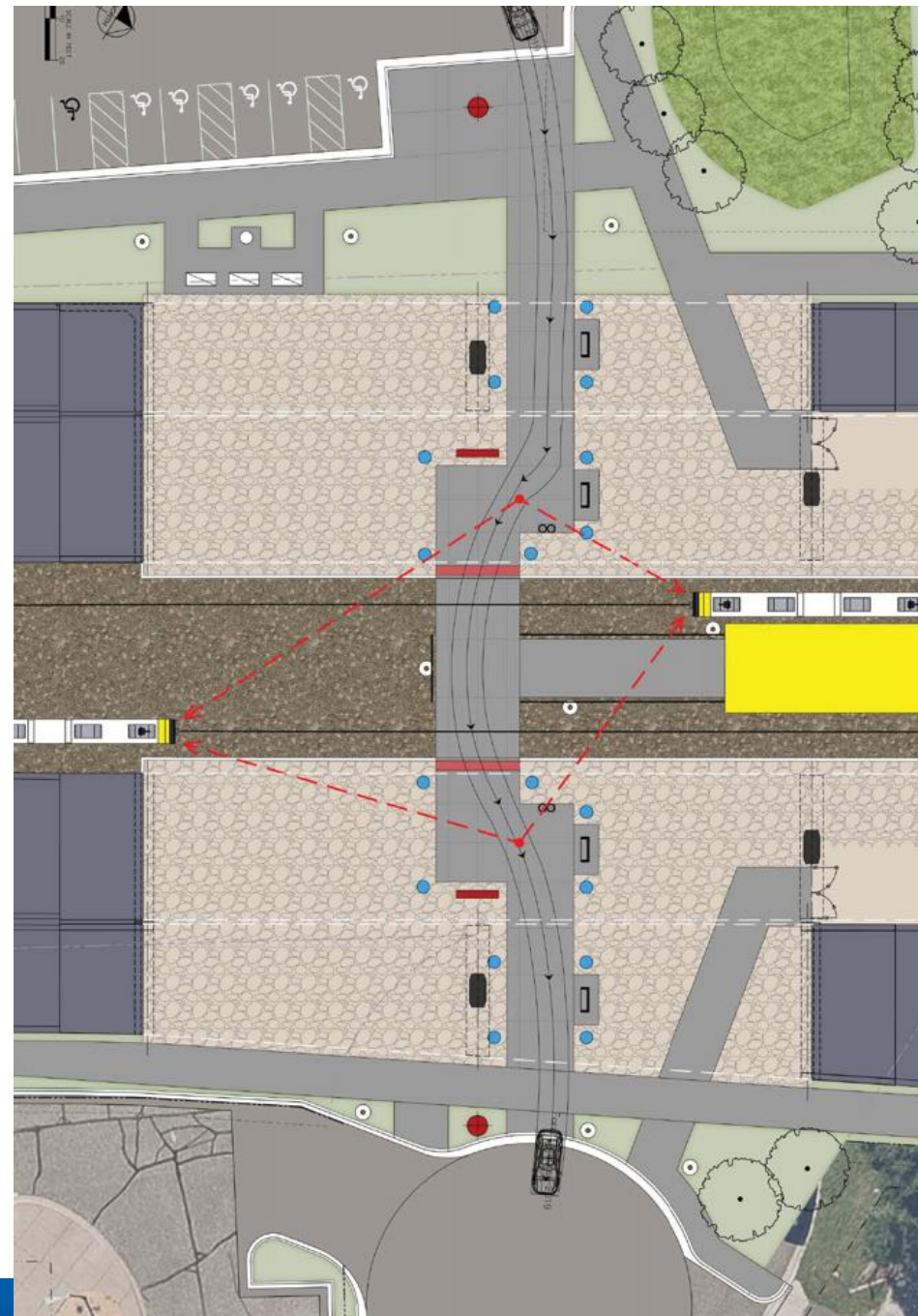


Bass Lake Rd Station



Bass Lake Rd Station

- 60% plans show basic bridges and retaining walls, ordinations of paths and spatial relationships around the station
- Details added post 60% via Cultural Placekeeping and continued work with project partners
- Areas of development post 60%:
 - Station colors, patterns, etc.
 - Bridge and wall color and textures
 - Ground treatments
 - Lighting



Bass Lake Rd Station – Animation



Bass Lake Rd Station



DRAFT - WORK IN PROCESS



Bass Lake Rd Station



DRAFT - WORK IN PROCESS



Bass Lake Rd Station



DRAFT - WORK IN PROCESS



Bass Lake Rd Station



DRAFT - WORK IN PROCESS



Bass Lake Rd Station



DRAFT - WORK IN PROCESS



Next Steps

- Presenting 60% designs for Robbinsdale and Minneapolis at future CMC
- Details added post 60% via Cultural Placekeeping and continued work with project partners



Schedule Update

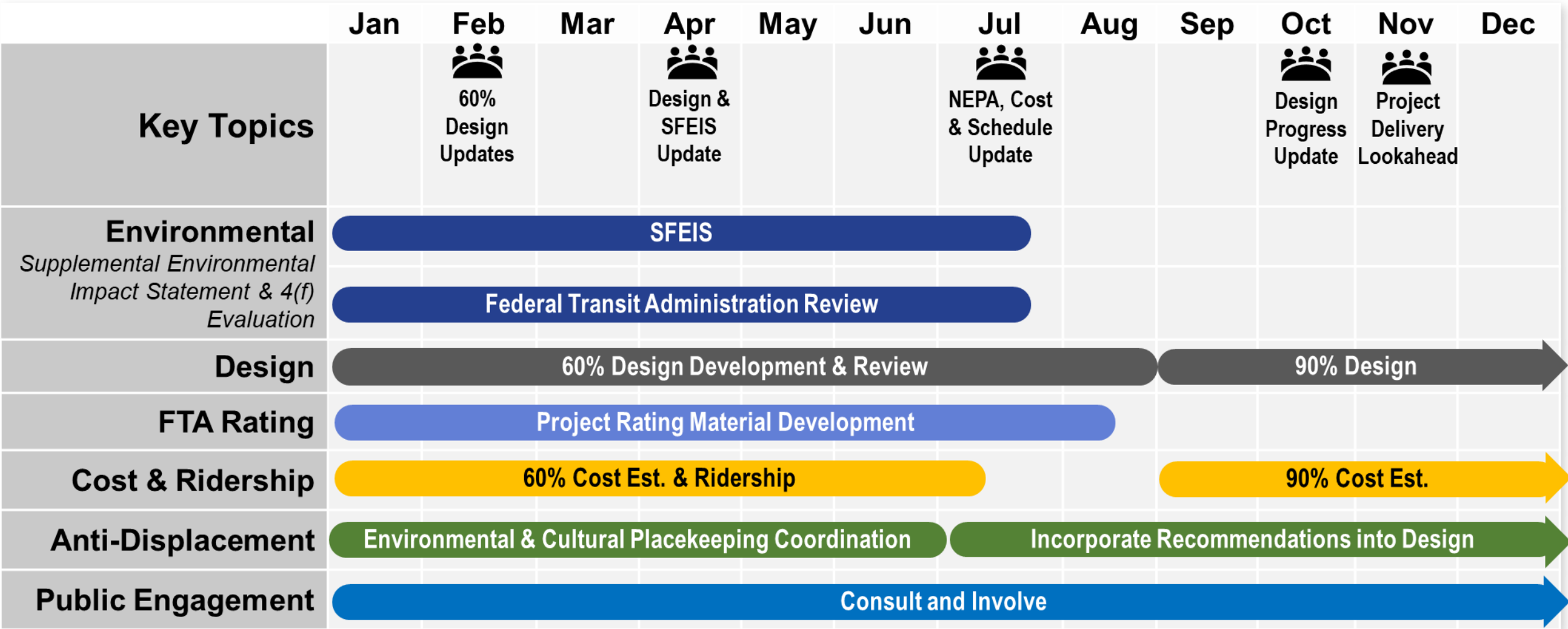


2025 Schedule

WE ARE HERE



 CMC Meeting



All schedules are subject to change



Engagement Update



Engagement Metrics: Aug 2020-Mar 2025

- **933** events resulting in nearly **41,685** points of contact with the public
- **80,000** reach on social media and **10 million+** reach through newsletters and paid ads on community and cultural media
- Approximately **7,170** survey responses, written comments, and comments on the interactive map
- Approximately **250,000 postcards** mailed to corridor properties
- Over **7,000** emails and phone calls



Business & Property Owner Engagement

- Business and residential canvassing underway
 - Property Impact Mailer sent week of 2/10
 - Received +350 responses to date
- Reviewing design changes with community prior to publishing 60% design
- Meeting with impacted property owners
- North Loop design coordination
- Design workshops



Robbinsdale Lowry Workshop, December 2024

Engagement Events

Recent Events	Location	Day
North Loop Community Meeting	North Loop Garage	Thu, Mar 13
Lowry Ave Station Design Workshop	Sanctuary Church, Minneapolis	Mon, Mar 24
Quarter 1 Community Update	Brooklyn Park Library	Tue, Mar 25
North Loop Neighborhood Association	Itasca Event Center, Minneapolis	Wed, Mar 26
Lowry Ave Station Design Workshop	Elim Church, Robbinsdale	Thu, Mar 27
Upcoming Events	Location	Day
Crystal City Council Update	Crystal	Tue, June 3
Quarter 2 Community Update Meeting	Sanctuary Church, Minneapolis	Thu, June 5
Crystal Open House	Crystal Community Center	Tue, Jun 24
Quarter 3 Community Update Meeting	Elim Church, Robbinsdale	Tue, Sept 16
Quarter 4 Community Update Meeting	Crystal Community	Thu, Nov 20



Stay connected

- Engagement email:
 - BLEoutreach@metrotransit.org
- **BlueLineExt.org**
 - For the latest project updates and to sign up for our newsletter
 - Connect with staff for your questions or schedule a presentation
- Follow us:
 - Instagram: Blue_Line_Extension
 - BlueSky: @BlueLineExt.bsky.social
 - Facebook: MetroBlueLineExtension
 - X/Twitter: @BlueLineExt

