

Project Decision Board

January 15, 2025



BROOKLYN PARK | CRYSTAL | ROBBINSDALE | MINNEAPOLIS



Today's Topics

- Call to Order
- Approval of December 18 Meeting Minutes
- Environmental Mitigation Measure Update
- 2025 Early Construction
 - Target Field Station Bridge Connection



The public can submit written comments to Nkongo Cigolo (Nkongo.Cigolo@metrotransit.org)

Approval of December 18, 2024 Meeting Minutes



Environmental Justice Mitigation Update



Environmental Justice Mitigation Update

- Federal Executive Order guides agencies to conduct meaningful engagement and collaboration with underserved and overburdened communities to address the adverse conditions they experience
- Coordinating Environmental Mitigation with FTA
 - Seeking FTA's guidance and input on federally eligible mitigation
 - Environmental Justice mitigation is less specific
 - Proposing mitigation to FTA for consideration



Environmental Justice Mitigation Considerations

- Supplemental Final EIS includes:
 - Offstreet parking at Penn/W Broadway
 - Cultural Placekeeping Design Groups
 - Public realm improvements
 - Storefront space for project and partner resources
 - Workforce – Local Hiring Preference Program
 - Business Support During Construction



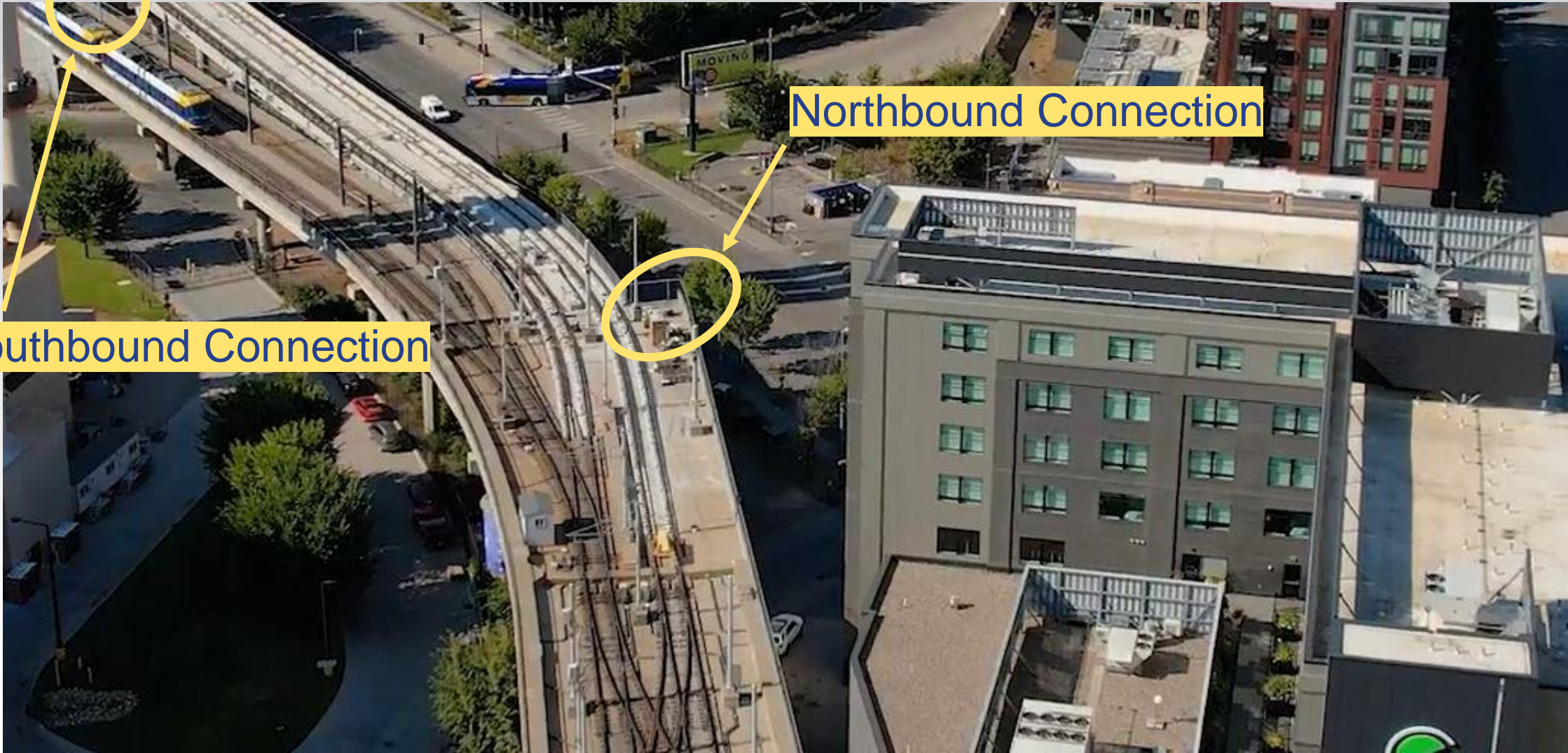
2025 Early Construction Target Field Station



Need for Advanced Construction

- The project team has been evaluating opportunities to address critical path items to BLE construction and mitigate construction impacts
- Key Considerations
 - GLE testing scheduled for Spring 2026
 - GLE revenue service starts in 2027
 - BLE major construction starts in 2027
- Major BLE impacts to revenue operations may be avoided by constructing portions of Target Field Station (TFS) Infrastructure in 2026





Southbound Connection

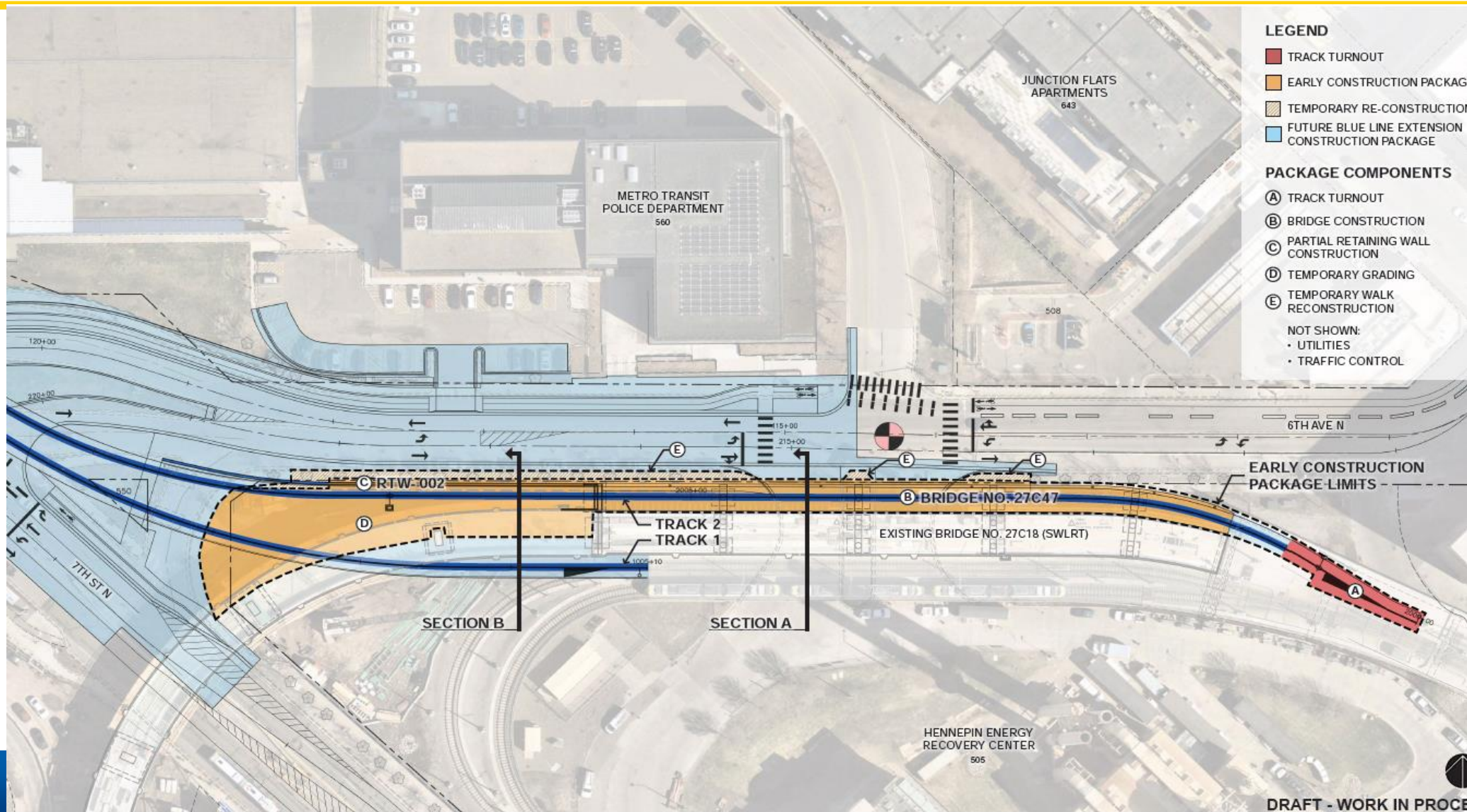
Northbound Connection



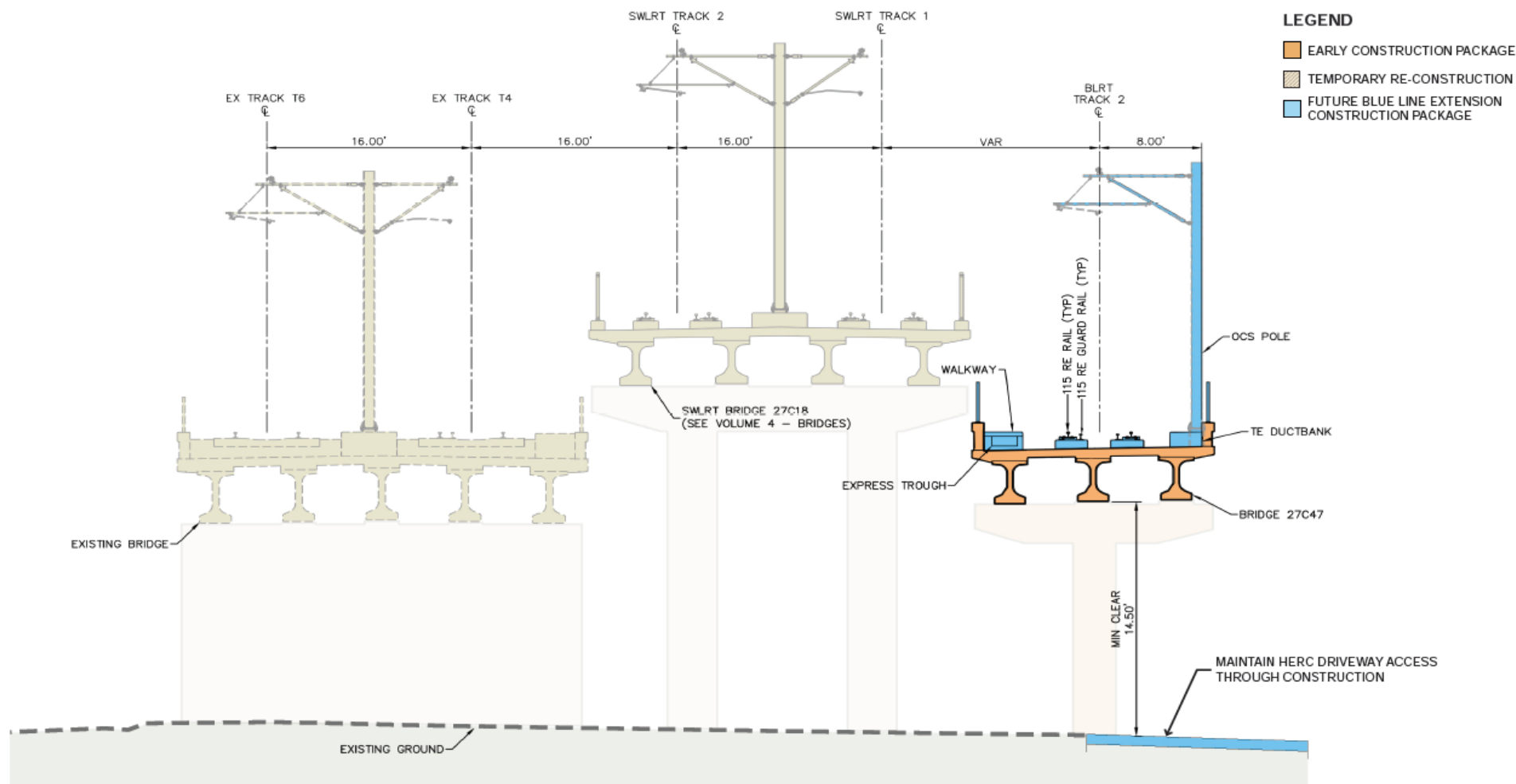
Target Field Station BLE Connections



Target Field Station Bridge Connection

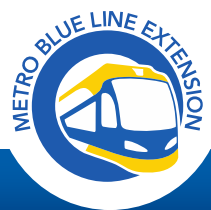


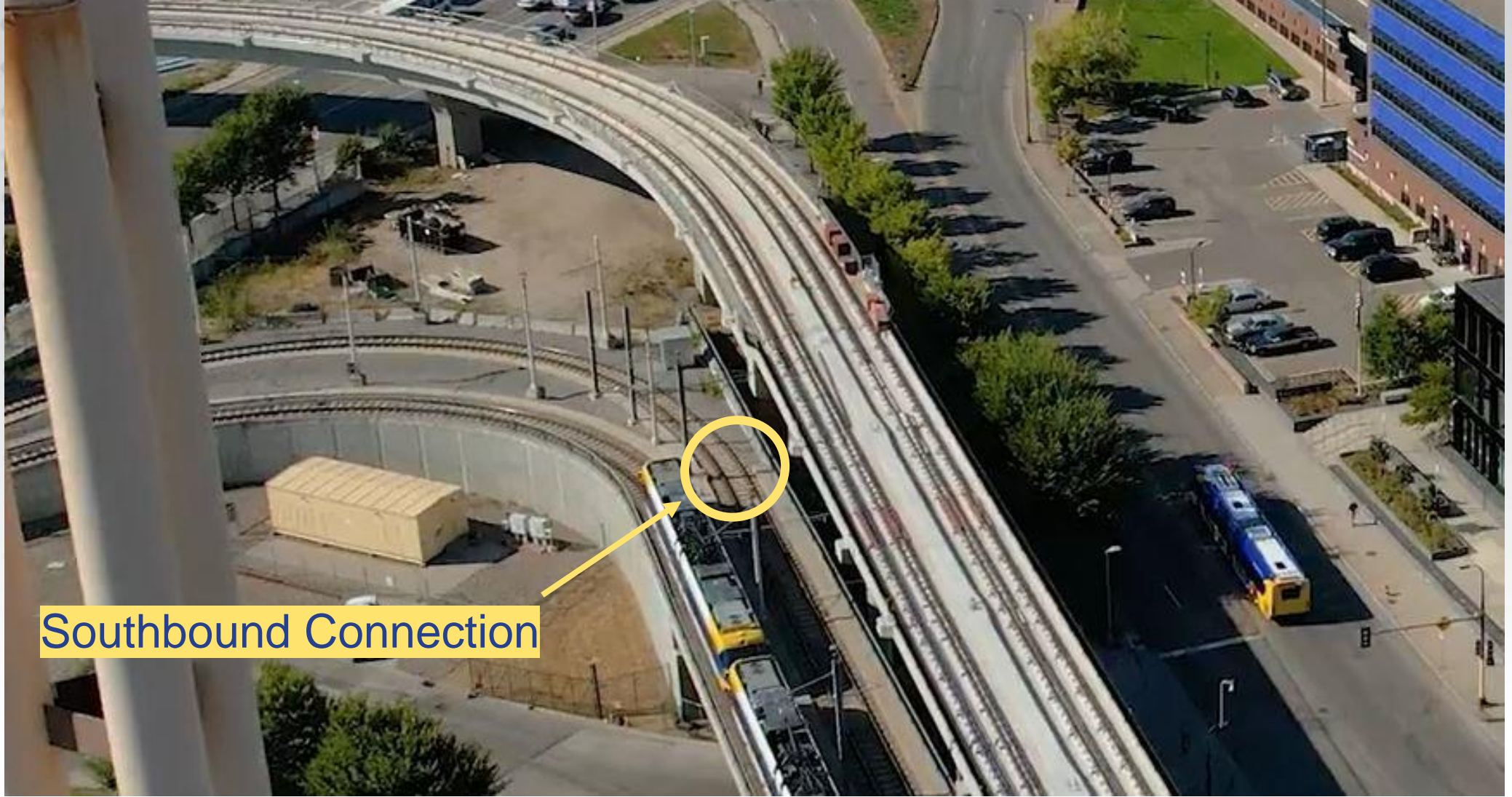
Target Field Connection – Section A



- LEGEND**
- EARLY CONSTRUCTION PACKAGE
 - TEMPORARY RE-CONSTRUCTION
 - FUTURE BLUE LINE EXTENSION CONSTRUCTION PACKAGE

TYPICAL SECTION
 STA 2000+00 TO 2005+64
 (LRT OVER HERC ENTRANCE)



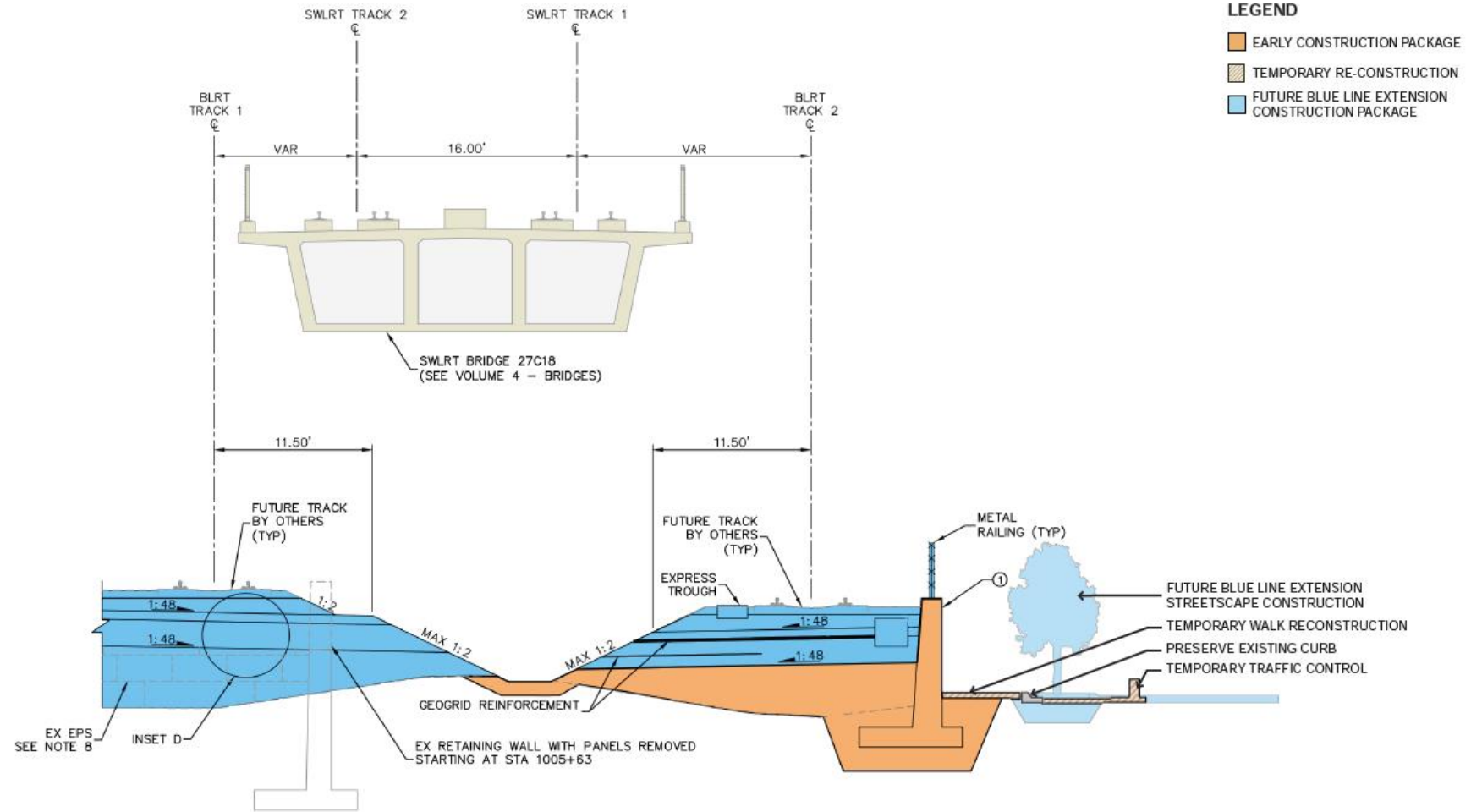


Southbound Connection

Southbound Connection



Target Field Connection - Section B



TYPICAL SECTION
 STA 1005+95 TO 1006+75
 STA 2005+84 TO 2006+71



Decision Risks and Considerations

- Avoid adverse operational impacts to GLE during BLE construction
- Avoid adverse impacts to GLE testing schedule
- Avoid adverse cost and schedule impacts to BLE construction
 - Limitations on work hours
 - Limitations on construction activities
 - Limitations on construction methods and equipment



Mitigation Options Under Evaluation

- Change order to GLE construction contract
- BLE LONP for early construction
- Procurement approach
 - One package
 - Two packages; Turnout (Separate material procurement), Bridge
- Other options?



Next Steps

- Identification of advanced package(s) for further evaluation
- Develop scope/schedule/cost justification
- Final advanced package(s) decision
- Begin design and contract document development
- Q1 2025
 - TFS Detailed Scope Definition



Next Meeting

- Next Meeting: February 19, 2025

