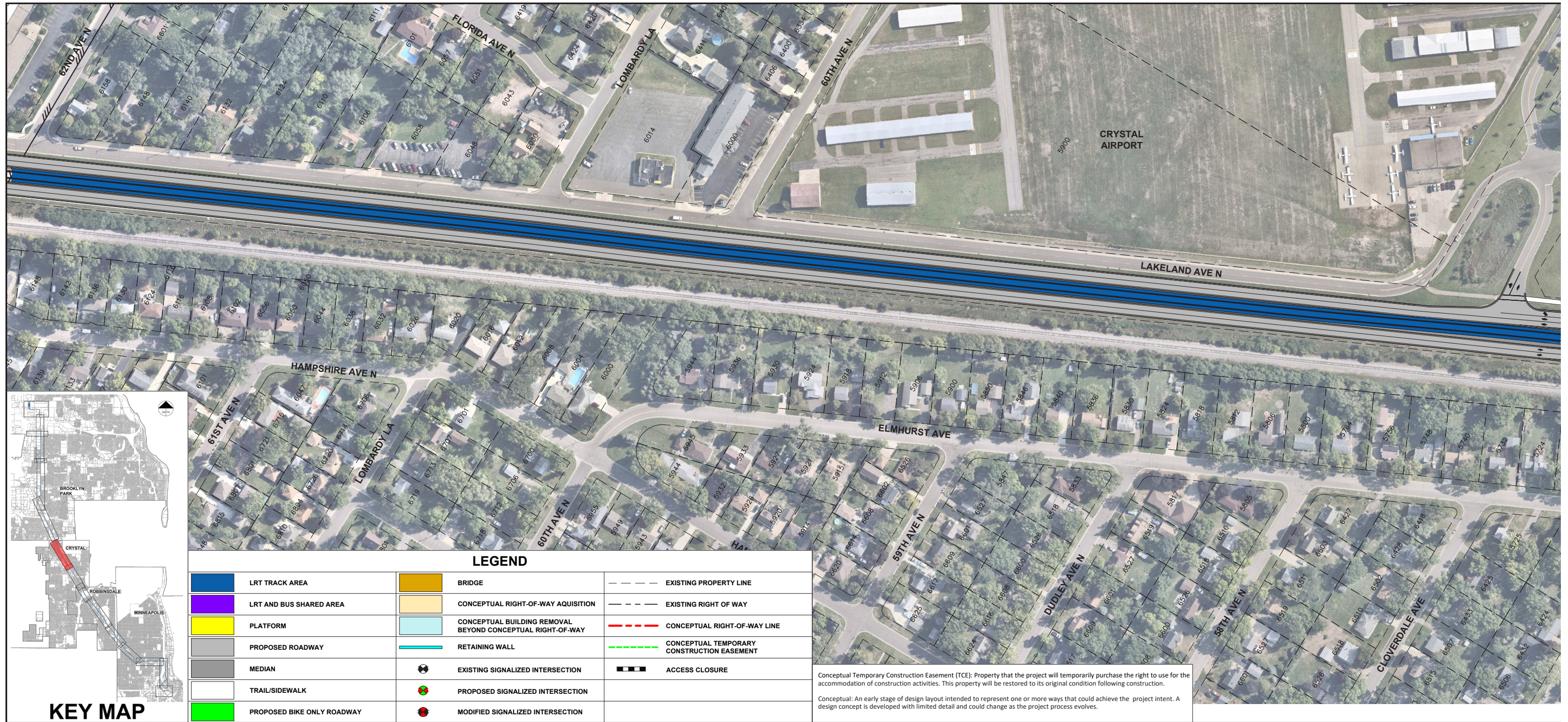
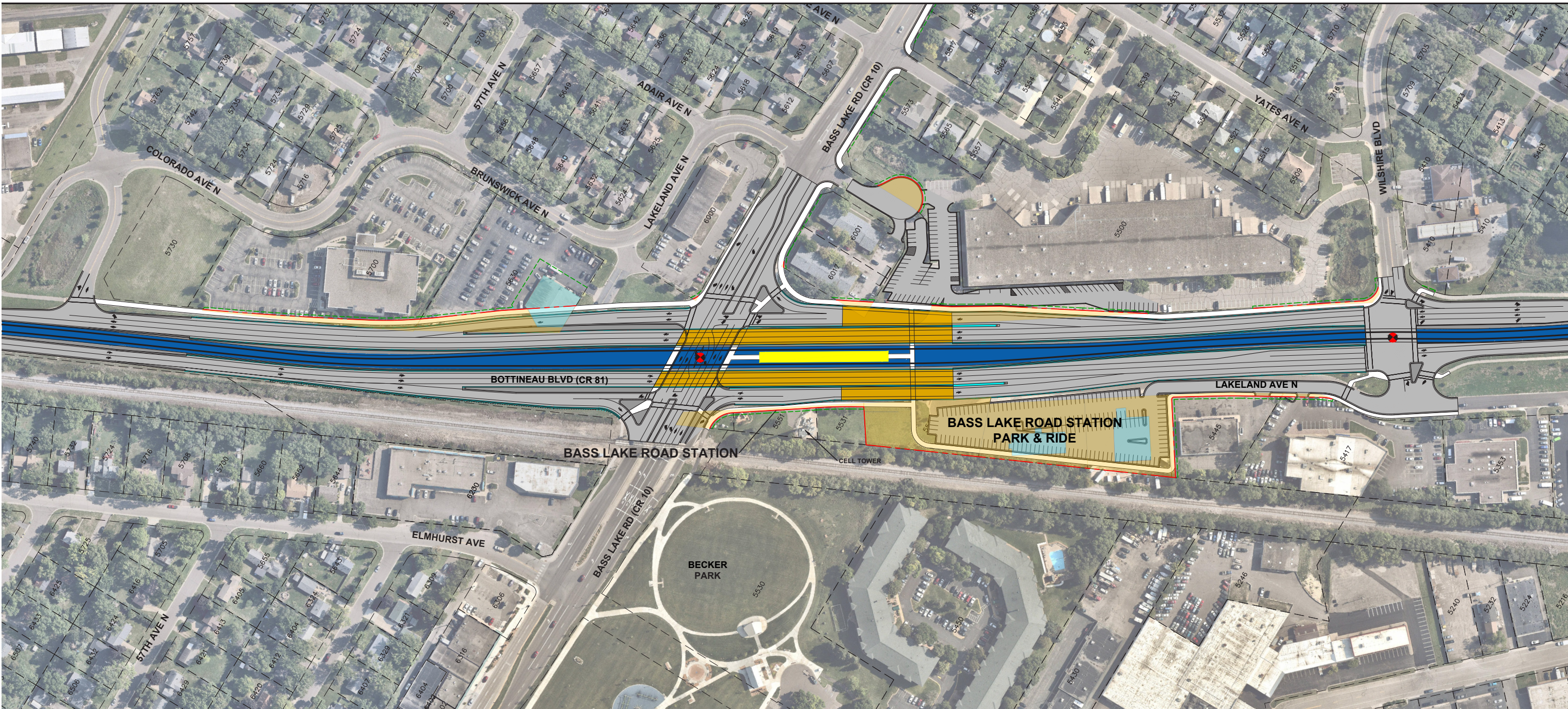


CITY OF CRYSTAL CRYSTAL AIRPORT



CITY OF CRYSTAL BASS LAKE ROAD STATION



DRAFT-WORK IN PROCESS



CITY OF CRYSTAL

WILSHIRE BLVD TO 51ST AVE N



CITY OF CRYSTAL

51ST AVE N TO 47TH AVE N

