



Appendix F

Supporting Technical Reports

F.7 Modified Phase I Environmental Site Assessment



This page intentionally left blank

Modified Phase I Environmental Site Assessment

Metro Blue Line Extension Light Rail Transit Project
Minneapolis, Golden Valley, Robbinsdale, Crystal, and Brooklyn Park,
Minnesota
Metropolitan Council Contract Number: 14P232

Prepared For

Metropolitan Council And Minnesota Department of Transportation



Project B1502383
October 22, 2015
Braun Intertec Corporation



The Science You Build On.

Braun Intertec Corporation
11001 Hampshire Avenue S
Minneapolis, MN 55438

Phone: 952.995.2000
Fax: 952.995.2020
Web: braunintertec.com

October 22, 2015

Project B1502383

Kathryn O'Brien
Metropolitan Council
Blue Line Extension Project Office
5514 West Broadway Avenue, Suite 200
Crystal, MN 55428

Re: Modified Phase I Environmental Site Assessment
Metro Blue Line Extension Light Rail Transit (BLRT) Project
Minneapolis, Golden Valley, Robbinsdale, Crystal, and Brooklyn Park, Minnesota
Metropolitan Council Contract Number: 14P232

Dear Ms. O'Brien:


In accordance with Metropolitan Council Contract 14P232, Braun Intertec Corporation conducted a Modified Phase I Environmental Site Assessment (ESA) of the above-referenced site (Corridor). The objective of the Modified Phase I ESA was to serve as a screening tool to identify, to the extent possible, existing sources of contamination (based on present or former uses) at locations that could impact future construction of the Corridor.

The Modified Phase I ESA was prepared on behalf of and for use by Metropolitan Council and the Minnesota Department of Transportation (MnDOT). No other party has a right to rely on the contents of the Modified Phase I ESA without written authorization by Braun Intertec. Please refer to the attached report for the scope, methods, and conclusions of this assessment.

Braun Intertec appreciates the opportunity to provide professional services to you for this project. If you have any questions regarding this letter or the attached report, please contact Joseph Foline at 952.995.2484 or Jaclyn Dylla at 952.995.2490.

Sincerely,

BRAUN INTERTEC CORPORATION



Jennifer B. Wolff, PG, CPG
Senior Scientist



Jaclyn E. Dylla, CHMM
Principal – Senior Scientist

Attachment:
Modified Phase I Environmental Site Assessment Report

cc: James L. DeLuca, Minnesota Department of Transportation
AA/EOE

Table of Contents

Description	Page
Executive Summary	A
A. Introduction.....	1
A.1. Purpose.....	1
A.2. Scope of Services.....	2
A.3. General Definitions.....	3
A.4. Corridor Ranking Definitions	3
B. General Corridor Description and Location.....	4
C. Records Review	5
C.1. Physical Setting Information	5
C.1.a. Topography	5
C.1.b. Geology and Hydrogeology by Segment	5
C.2. Regulatory Information	10
C.2.a. Corridor	10
C.2.b. Adjoining Properties.....	13
C.2.c. Unmapped Sites	13
C.3. Additional Government Records.....	13
C.3.a. Interviews.....	13
C.3.b. Met Council	13
C.3.c. Minnesota County Well Index.....	13
C.3.d. State Regulatory Web Pages	14
C.4. Historical-Use Information	14
C.4.a. Aerial Photographs.....	14
C.4.b. City Directory Information	14
C.4.c. Fire Insurance Maps	15
C.4.d. Historical Topographic Maps.....	15
C.4.e. Hennepin County Information	15
D. Interviews.....	15
E. Corridor Reconnaissance.....	16
F. Current and Historical Corridor Land-Use.....	16
G. MnDOT Contamination Potential Ranking.....	17
G.1. Parcels with Low Potential for Contamination.....	18
G.2. Parcels with Medium Potential for Contamination	18
G.3. Parcels with High Potential for Contamination.....	18
H. Limitations and Data Gaps	19
I. Additional Considerations	19
J. Recommendations	20
K. References.....	20
L. Statement and Qualifications.....	20

Figures

- 1: Corridor Location Map
- 2: Project Corridor Features

Appendices

- A: Parcel Summary Table
- B: Parcel Summary Table – Low Potential for Contamination Sites
- C: Parcel Summary Table – Medium Potential for Contamination Sites
- D: Parcel Summary Table – High Potential for Contamination Sites
- E: Parcel Summaries
- F: Additional Parcel Summary Table (on CD)
- G: GeoSearch Regulatory Report (on CD)
- H: MPCA File Review Information (on CD)
- I: Aerial Photographs (on CD)
- J: Fire Insurance Maps (on CD)
- K: Topographic Maps (on CD)
- L: Parcel Summary Table with PIN Information (on CD)
- M: References

Executive Summary

Braun Intertec received authorization from the Metropolitan Council (Met Council) to conduct a Modified Phase I Environmental Site Assessment (ESA) for the planned Metro Blue Line Extension Light Rail Transit (LRT) Project along the locally preferred alternative (LPA) from Target Field Station located in Minneapolis, Minnesota north to the Oak Grove Parkway Park and Ride facility in Brooklyn Park, Minnesota, and including an Operation and Maintenance Facility (OMF) located north of the Oak Grove Parkway Park and Ride facility (Corridor). For the purposes of this report, the Corridor includes the LPA, the OMF site, and the area within 500 feet of the LPA and OMF site. The Corridor is located in the cities of Minneapolis, Golden Valley, Robbinsdale, Crystal, and Brooklyn Park, in Hennepin County, Minnesota, a distance of approximately 13 miles.

This Modified Phase I ESA was divided into six segments based on municipality:

- Segment M, located within the City of Minneapolis, a distance of approximately 2 miles
- Segment GV, located within the City of Golden Valley, a distance of approximately 1.4 miles
- Segment R, located within the City of Robbinsdale, a distance of approximately 2.6 miles
- Segment C, located within the City of Crystal, a distance of approximately 1.9 miles
- Segment BP2, located within the City of Brooklyn Park, a distance of approximately 2.6 miles
- Segment BP1, located within the City of Brooklyn Park, a distance of approximately 2.4 miles

Please refer to the Corridor Location Map attached as Figure 1 and the Project Corridor Feature Maps attached as Figure 2 for a depiction of the Corridor location, as well as the locations of the above-listed segments.

The Modified Phase I ESA was completed in anticipation of preliminary design and future construction activities and included the area within 500 feet of the proposed centerline of the Corridor. The Modified Phase I ESA was completed in conformance with the scope of services outlined by Metropolitan Council Contract Number 14P232, as well as the United States Environmental Protection Agency (USEPA) All Appropriate Inquiry and ASTM 1527-13, as modified by the Minnesota Department of Transportation (MnDOT) for transportation projects. The modified approach includes ranking identified parcels within the Corridor as having a low, medium, or high potential for contamination. The objective of the Modified Phase I ESA was to serve as a screening tool to identify, to the extent possible, existing sources of contamination (based on present or former uses) at locations that could impact future construction of the Corridor.

At the time of this assessment, the majority of the Corridor was developed with residential and commercial parcels.

Specifically, the M (Minneapolis) Segment has been developed since the 1880s, with residential and park areas on the west end and commercial development on the east end. In the GV, R, C, and BP2 Segments, the Corridor follows an existing BNSF railroad track, which has been present since the 1880s. The remainder of the GV (Golden Valley) Segment has been residential and park areas since the 1930s, with additional development in the 1960s and 1970s. The R (Robbinsdale) Segment was mixed residential and farmland until the 1960s when the commercial district in the central portion of the segment and additional residences replaced the farmland. The C (Crystal) Segment includes the Crystal Airport in the central portion of the segment, with commercial and residential in the remainder of the segment. This area was developed in the 1950s and 1960s. The Corridor follows the railroad until the central portion of the BP2 Segment, when the Corridor trends to the east. The BP2 and BP1 (Brooklyn Park) Segments were cultivated farmland until the 1950s and 1960s when the areas were converted to commercial with some residential areas. The northern end of the Corridor, in the BP1 Segment, has some formerly cultivated areas, which are currently undeveloped.

Braun Intertec evaluated all parcels in the Corridor to determine if they met the ranking criteria established by MnDOT as having a low, medium, or high potential for contamination. Parcel summaries were prepared for parcels that were determined to have a low, medium, or high potential for contamination. A parcel summary table of these ranked parcels and the corresponding parcel summaries are included in Appendices A and E, respectively. Corridor Sketches depicting the locations of the ranked parcels with a low, medium, or high potential for contamination are included as Figure 2. The parcel summaries provide an overview of the regulatory and historical review of the information attached as Appendices G through J.

Some parcels were evaluated but were determined not to have a low, medium, or high potential for contamination. These additional parcels are summarized in Appendix F. Parcel summaries for these additional parcels were not prepared and these parcels are not further discussed in this report.

Based on Braun Intertec's assessment, 271 parcels were identified within the Corridor as having a low, medium, or high potential for contamination. More specifically, 47 parcels were identified within the M Segment, 9 parcels were identified within the GV Segment, 67 parcels were identified in the R Segment, 63 parcels were identified in the C Segment, 54 parcels were identified in the BP2 Segment, and 31 parcels were identified in the BP1 Segment.

The following is a discussion of the parcel ranking criteria and the corresponding parcels identified within each segment of the Corridor with a low, medium, or high potential for contamination.

Low Potential for Contamination Parcels include parcels that are hazardous waste generators (HWGS), light industrial facilities, and possibly some parcels where site reconnaissance showed poor housekeeping or soil disturbance, etc. Braun Intertec identified 112 *Low Potential for Contamination Parcels* within the Corridor. Specifically, 9 parcels were identified within the M segment, 3 parcels were identified in the GV segment, 37 parcels were identified in the R segment, 20 parcels were identified in the C segment, 24 parcels were identified in the BP2 Segment, and 19 parcels were identified in the BP1 Segment. The specific parcels identified are included in the Parcel Summary Table in Appendix A and on the Parcel Summary Table – Low Potential for Contamination Sites in Appendix B.

Medium Potential for Contamination Parcels include parcels with closed leaking underground or aboveground storage tanks (LUASTs), all parcels with underground or aboveground storage tanks (UASTs), all parcels with historic or current vehicle and/or auto body repair activities and petroleum use or storage, and unintentional hazardous materials release (HMIRSR05) sites. Braun Intertec identified 135 *Medium Potential for Contamination Parcels* within the Corridor. Specifically, 28 parcels were identified within the M segment, 6 parcels were identified in the GV segment, 23 parcels were identified within the R segment, 41 parcels were identified within the C segment, 26 parcels were identified within the BP2 Segment, and 11 parcels were identified within the BP1 Segment. The specific parcels identified are included in the Parcel Summary Table in Appendix A and on the Parcel Summary Table – Medium Potential for Contamination Sites in Appendix C.

High Potential for Contamination Parcels include all active and inactive Voluntary Investigation and Cleanup Program (VIC), Minnesota Environmental Response and Liability Act (MERLA) sites, all heavy industry sites, all active and inactive dumpsites, all Comprehensive Environmental Response, Compensation and Liability Information System (CERCLIS) sites, and all active LUAST sites. Braun Intertec identified 24 *High Potential for Contamination Parcels* within the Corridor. Specifically, 10 parcels were identified within the M segment, 7 parcels were identified within the R segment, 2 parcels were identified within the C segment, 4 parcels were identified within the BP2 Segment, and 1 parcel was identified within the BP1 Segment. The specific parcels identified are included in the Parcel Summary Table in Appendix A and on the Parcel Summary Table – High Potential for Contamination Sites in Appendix D.

The following table provides a summary of the ranked sites by segment:

Table 1. Parcels with Low, Medium, or High Potential for contamination by segment

Segment	# of Parcels with Low potential	# Parcels with Medium potential	# Parcels with High potential	Totals
M	9	28	10	47
GV	3	6	0	9
R	37	23	7	67
C	20	41	2	63
BP 2	24	26	4	54
BP-1	19	11	1	31
TOTAL	112	135	24	271

Additional Considerations

Based on a review of historical information, many properties within the Corridor were farmsteads prior to the 1930s or have been residences since the 1880s. Fuel oil tanks or other hazardous materials may be present within these parcels. In those cases where the historical information confirmed the presence of tanks or other contaminants, the parcel was assigned a parcel number and was ranked in accordance with the MnDOT definitions of having a low, medium, or high potential for contamination. For those parcels where the historical information did not confirm tanks or hazardous materials were present, the parcels were not assigned a parcel number and were not ranked. These additional parcels are summarized on the table in Appendix F.

Drilling Investigation activities, including the collection and analysis of soil and groundwater samples, are recommended along the Corridor where a medium or high potential for contamination is both adjacent to or in close proximity to the Corridor or where significant amounts of fill materials will be excavated during future construction.

A. Introduction

A.1. Purpose

Braun Intertec received authorization from the Metropolitan Council (Met Council) to conduct a Modified Phase I Environmental Site Assessment (ESA) for the planned Metro Blue Line Extension Light Rail Transit (LRT) Project along the locally preferred alternative (LPA) from Target Field Station located in Minneapolis, Minnesota north to the Oak Grove Parkway Park and Ride facility in Brooklyn Park, Minnesota, and including an Operation and Maintenance Facility (OMF) located north of the Oak Grove Parkway Park and Ride facility (Corridor). For the purposes of this report, the Corridor includes the LPA, the OMF site, and the area within 500 feet of the LPA and OMF site. The Corridor is located in the cities of Minneapolis, Golden Valley, Robbinsdale, Crystal, and Brooklyn Park, in Hennepin County, Minnesota, a distance of approximately 13 miles.

This Modified Phase I ESA divided into six segments based on municipality:

- Segment M, located within the City of Minneapolis, a distance of approximately 2 miles
- Segment GV, located within the City of Golden Valley, a distance of approximately 1.4 miles
- Segment R, located within the City of Robbinsdale, a distance of approximately 2.6 miles
- Segment C, located within the City of Crystal, a distance of approximately 1.9 miles
- Segment BP2, located within the City of Brooklyn Park, a distance of approximately 2.6 miles
- Segment BP1, located within the City of Brooklyn Park, a distance of approximately 2.4 miles

The Modified Phase I ESA was completed in conformance with the United States Environmental Protection Agency (USEPA) All Appropriate Inquiry and ASTM 1527-13, as modified by the Minnesota Department of Transportation (MnDOT) for transportation projects, including ranking identified parcels within the Corridor as having a low, medium, or high potential for contamination. The objective of the Modified Phase I ESA was to serve as a screening tool to identify, to the extent possible, existing sources of contamination (based on present or former uses) at locations that could impact future construction of the Corridor.

The Modified Phase I ESA was prepared on behalf of and for the use by Met Council and MnDOT in accordance with Contract number 14P232 between Met Council and Braun Intertec. No other party has a right to rely on the contents of the Modified Phase I ESA without written authorization by Braun Intertec. All authorized parties are entitled to rely on the attached report according to Braun Intertec's contract with Met Council, and under the same terms, conditions and circumstances.

A.2. Scope of Services

Services provided for this assessment included:

- Prepared a description of the Corridor location and current uses of properties within the Corridor.
- Prepared a general description of the topography, soils, geology, and groundwater flow direction at the Corridor.
- Reviewed reasonably ascertainable and practically reviewable regulatory information published by state and federal agencies, health, and/or environmental agencies.
- Determined the location/boundaries of any Wellhead Protection Areas that exist in the vicinity of the Corridor.
- Reviewed Minnesota Pollution Control Agency (MPCA) or Minnesota Department of Agriculture (MDA) files to obtain additional information about the magnitude and extent of known contamination and the regulatory status of parcels in the Corridor.
- Reviewed the history of the Corridor, including aerial photographs, directories, and other readily available Corridor development data.
- Conducted a reconnaissance of the Corridor, which included, at a minimum, drive- and walk-by reviews.
- Interviewed local government officials or agencies having jurisdiction over hazardous waste disposal or other environmental matters in the area of the Corridor.
- Ranked all identified parcels within the Corridor as having low, medium, or high potential for contamination based on criteria established by MnDOT.

A.3. General Definitions

The following are definitions of terms used in this report:

- Corridor: The area and parcels located within 500 feet of the Metro Blue Line Extension LRT project northbound track centerline. This includes parcels that are only partially located within 500 feet of the proposed boundaries.
- Light Rail Line (LRT): The proposed light rail line alignment subject to this Modified Phase I ESA.
- Parcel: A property, or portion of a property, located within the Corridor that has been evaluated.
- Site: A parcel or group of parcels that were collectively investigated or documented within a regulatory listing.
- Facility: A building, business, or land use located on the parcel.
- Right-of-Way: The land adjacent to the Corridor, which may be acquired by the Met Council/MnDOT to facilitate project construction. Public right-of-way is land adjacent to currently publicly owned roadways.

A.4. Corridor Ranking Definitions

As indicated, identified parcels within the Corridor were ranked as having a low, medium, and high potential for contamination to the project area using criteria established by MnDOT. Braun Intertec amended the definitions to ensure consistency with ranking and include situations not originally covered by the MnDOT criteria. The rankings, defined by MnDOT and amended by Braun Intertec, are as follows:

Low Potential for Contamination Parcels include parcels that are hazardous waste generators, light industrial facilities, and possibly some parcels where site reconnaissance showed poor housekeeping or soil disturbance, etc.

Medium Potential for Contamination Parcels include parcels with closed leaking underground storage tanks (LUASTs), all parcels with underground or aboveground storage tanks (UASTs), all parcels with historic or current vehicle and/or auto body repair activities and petroleum use or storage, and unintentional hazardous materials release sites.

High Potential for Contamination Parcels include all active and inactive Voluntary Investigation and Cleanup Program (VIC) sites, all active Petroleum Brownfields Program (PBP) sites, Minnesota Environmental Response and Liability Act (MERLA) sites, all heavy industry sites, all active and inactive dumpsites, all Comprehensive Environmental Response, Compensation and Liability Information System (CERCLIS) sites, and all active LUAST sites.

Please refer to Appendix A for a Parcel Summary Table for parcels which were identified within the Corridor as having a low, medium, or high potential for contamination. Parcels that did not meet the criteria as having a low, medium, or high potential for contamination are summarized in the Additional Parcel Summary Table in Appendix F.

B. General Corridor Description and Location

The total length of the Corridor is approximately 13 miles. The length of each segment is as follows:

- Segment M: approximately 2 miles
- Segment GV: approximately 1.4 miles
- Segment R: approximately 2.6 miles
- Segment C: approximately 1.9 miles
- Segment BP2: approximately 2.6 miles
- Segment BP1: approximately 2.4 miles

The Corridor is a proposed LRT project that will provide for transit improvements in the northwest area of the Twin Cities. The Metro Blue Line Extension LRT project will include up to 11 new stations, three of which will include new or renovated park and ride lots. Traction Power Substations (TPSS) are proposed to be located along the Corridor on limited-access sites. The TPSS buildings are the sites in which the alternating current (AC) of the power grid is converted by rotary transformers into the voltage and direct current (DC) that is required by the electric trains. The current is routed to the trains via a utility duct bank that connects to the overhead catenary (contact) systems poles.

To facilitate construction, the project may include the acquisition of new right of way and parcels for park and rides. For the purposes of this report, the Modified Phase I ESA study area included the area within 500 feet of the proposed alignment of the Corridor. Please refer to the Corridor Location Map and Project Corridor Features, attached as Figures 1 and 2, for a depiction of the Corridor location.

At the time of this assessment, the majority of the Corridor was developed with residential and commercial parcels.

Specifically, the M (Minneapolis) Segment has been developed since the 1880s, with residential, park areas on the west end, and commercial development on the east end. In the GV, R, C, and BP2 Segments, the Corridor follows an existing BNSF railroad track, which has been present since the 1880s. The remainder of the GV (Golden Valley) Segment has been residential and park areas since the 1930s, with additional development in the 1960s and 1970s. The R (Robbinsdale) Segment was mixed residential and farmland until the 1960s when the commercial district in the central portion of the segment and additional residences replaced the farmland. The C (Crystal) Segment includes the Crystal Airport in the central portion of the segment, with commercial and residential in the remainder of the segment. This area was developed in the 1950s and 1960s. The Corridor follows the railroad until the central portion of the BP2 Segment, when the Corridor trends to the east. The BP2 and BP1 (Brooklyn Park) Segments were cultivated farmland until the 1950s and 1960s when the areas were converted to commercial with some residential areas. The northern end of the Corridor, in the BP1 Segment, has some formerly cultivated areas, which are currently undeveloped.

C. Records Review

C.1. Physical Setting Information

C.1.a. Topography

The Corridor is located on the Anoka, Coon Rapids, Minneapolis North, Minneapolis South, and Osseo the United States Geological Survey (USGS) 7.5-minute topographic map series.

According to the USGS 7.5-minute topographic map series, the elevation along the Corridor is generally level, ranging from to 840 – 850 feet above mean sea level (amsl) at the south/east end (in Segments GV and M) to 880 – 900 feet amsl along the north end (in Segments BP1, BP2, C, and R).

C.1.b. Geology and Hydrogeology by Segment

M Segment

- The unconsolidated sediment beneath the Corridor in the M Segment starts with Pleistocene age middle-terrace deposits, which consist of sand, gravelly sand, and loamy sand with thin deposits of silt, loam, or organic sediment on top, and transitions to postglacial lacustrine deposits, which consist of sand, loamy sand, and loam with local organic-rich layers, and then

upper-terrace deposits, which consist of sand, gravelly sand and loamy sand (Meyer and Hobbs, 1989). The west or north end of the M Segment contains Pleistocene age loamy till deposits, which are loam in texture with a few beds and lenses of stratified sediment, underlain by Superior lobe stratified sediment or till and are generally at a depth of more than 50 feet, including small areas of thick, fine, loamy colluvium sediment, and also by postglacial organic deposits. The organic deposits have largely been drained and filled (Meyer and Hobbs, 1989).

- The uppermost bedrock unit beneath the east/south end of the M Segment is the Middle Ordovician, St. Peter Sandstone (Olsen and Bloomgren, 1989). The St. Peter Sandstone is described as a fine- to medium-grained, friable quartz sandstone in the upper half to two thirds of the unit. The lower part of the St. Peter Sandstone contains multicolored beds of mudstone, siltstone and shale with interbedded, very coarse sandstone. The central portion of the M Segment is the Lower Ordovician, Prairie du Chien Group (Olsen and Bloomgren, 1989). The Prairie du Chien Group is described as Dolostone that varies greatly in thickness because its top is a major erosional surface. The lower part of the section is less sandy except within 10 to 15 feet of the base. The west or north end of the M Segment is underlain by the Middle Ordovician, Platteville and Glenwood Formation (Olsen and Bloomgren, 1989). The Platteville Formation is described as fine-grained limestone containing thin shale partings near the top and base, underlain by green, sandy shale of the Glenwood Formation, which is very thin.
- In general, the depth to bedrock beneath the M Segment ranges from approximately 51 to 100 feet below the land surface. A southwest-northeast trending bedrock valley is present along the south and east end of the M Segment.
- According to published geologic information, the depth to groundwater beneath the M Segment ranges from approximately 10 to 20 feet below land surface. The regional groundwater flow direction beneath the segment is to the east toward the Mississippi River.

GV Segment

- The unconsolidated sediment beneath the GV Segment of the Corridor is postglacial organic deposits at the south end, transitioning to Pleistocene age till of mixed composition deposits, which are complexly intermixed yellowish brown to gray and reddish brown to reddish gray in color, loam to sandy loam. Reddish colored till or stratified sediment are commonly within 20

feet of the surface. Locally, this deposit includes small areas of thick reddish brown-colored till and thick loamy to sandy colluvium. Lenses of stratified sediment, primarily sand and gravel, are common (Meyer and Hobbs, 1989).

- The uppermost bedrock unit beneath the GV Segment is the Platteville and Glenwood Formation along the south end of the GV Segment, replaced by the St. Peter Sandstone in the north end. Bedrock descriptions are provided in the M Segment geology discussion above.
- In general, the depth to bedrock beneath the GV Segment ranges from approximately 101 to 200 feet below the land surface, with the depth along the majority of the Segment between 151 and 200 feet below land surface.
- According to published geologic information, the depth to groundwater beneath the GV Segment ranges from approximately 10 to 20 feet below land surface. The regional groundwater flow direction beneath the segment is to the east toward the Mississippi River.

R Segment

- The unconsolidated sediment beneath the R Segment of the Corridor is Pleistocene age till on the south end, and then Pleistocene age sandy till deposits that consist of loam to sandy loam and are commonly capped by and interbedded with thin deposits of silty to gravely stratified sediment. This deposit includes small areas of thick loamy to sandy colluviums in the central area, followed by the Pleistocene age upper-terrace deposits.
- The uppermost bedrock beneath the R Segment is the St. Peter Sandstone. Bedrock descriptions are provided in the M Segment geology discussion above.
- In general, the depth to bedrock beneath the R Segment ranges from approximately 101 to 200 feet below the land surface, with the depth along the majority of the segment between 151 and 200 feet below land surface.
- According to published geologic information, the depth to groundwater beneath the R Segment ranges from approximately 30 to 60 feet below land surface. The regional groundwater flow direction beneath the segment is to the east toward the Mississippi River.

C Segment

- The unconsolidated sediment beneath the C Segment is Pleistocene age upper-terrace deposits (Meyer and Hobbs, 1989). A description of the Pleistocene age upper-terrace deposits is provided in the M Segment geology discussion above.
- The uppermost bedrock beneath the C Segment is the St. Peter Sandstone. Bedrock descriptions are provided in the M Segment geology discussion above.
- In general, the depth to bedrock beneath the C Segment ranges from approximately 51 to 200 feet below the land surface, with the depth along the majority of the segment between 151 and 200 feet below land surface.
- According to published geologic information, the depth to groundwater beneath the C Segment ranges from approximately 30 to 60 feet below land surface. The regional groundwater flow direction beneath the segment is to the east toward the Mississippi River.

BP2 Segment

- The unconsolidated sediment beneath the BP2 Segment is Pleistocene age upper-terrace deposits (Meyer and Hobbs, 1989). A description of the Pleistocene age upper-terrace deposits is provided in the M Segment geology discussion above.
- The uppermost bedrock unit beneath the BP2 Segment is the St. Peter Sandstone at the south end, replaced by the Prairie du Chien Group in the central portion; the northern portion is underlain by the Upper Cambrian, Jordan Sandstone (Olsen and Bloomgren, 1989). A description of the St. Peter Sandstone and the Prairie du Chien Group is provided in the M Segment geology discussed above. The Jordan Sandstone is described as quartzose sandstone that is carbonate cemented in the upper 10 to 15 feet of the deposit. The middle part of the deposit is coarse grained, and the basal 10 to 20 feet is finer grained and may contain minor amounts of shale.
- In general, the depth to bedrock beneath the BP2 Segment ranges from approximately 51 to 150 feet below the land surface, with the depth along the majority of the Corridor between 101 and 150 feet below land surface.

- According to published geologic information, the depth to groundwater beneath the BP2 Segment ranges from approximately 20 to 60 feet below land surface. The regional groundwater flow direction beneath the segment is to the east/southeast toward the Mississippi River.

BP1 Segment

- The unconsolidated sediment beneath the BP1 Segment is Pleistocene age upper-terrace deposits (Meyer and Hobbs, 1989). A description of the Pleistocene age upper-terrace deposits is provided in the M Segment geology discussion above.
- The uppermost bedrock unit beneath the BP1 Segment is the Jordan Sandstone on the south end, which is replaced in the north by the Upper Cambrian, St. Lawrence and Franconia Formations (Olsen and Bloomgren, 1989). The St. Lawrence Formation consists of dolomitic siltstone and shale in eastern Hennepin County. The fine-grained, glauconitic sandstone and shale of the Franconia becomes dolomitic in western Hennepin County, where the two units are distinguishable only by the higher glauconite content of the Franconia. Fine- to medium-grained quartzose sandstone with minor amounts of white or light-colored shale forms the upper part of the Franconia in parts of the north and west.
- In general, the depth to bedrock beneath the BP1 Segment ranges from approximately 101 to 200 feet below land surface, with the depth along the majority of the Corridor between 151 and 200 feet below land surface. An east-west trending bedrock valley crosses the BP1 Segment in the northern portion.
- According to published geologic information, the depth to groundwater beneath the BP1 Segment ranges from approximately 20 to 40 feet below land surface. The regional groundwater flow direction beneath the segment is to the east/southeast toward the Mississippi River.

The groundwater flow was identified in some parcel summaries through review of available data, but was the Corridor-specific groundwater flow direction was not determined through direct measurement during this Modified Phase I ESA. Additional field investigation, beyond the Scope of Services of this Modified Phase I ESA, would be required to determine this information.

C.2. Regulatory Information

Braun Intertec obtained regulatory information pertaining to the Corridor and surrounding area from GeoSearch. The GeoSearch report is a compilation of records of facilities that are included on current federal and state environmental regulatory databases. The databases were searched to a distance of one-quarter mile from the Corridor. Braun Intertec reviewed the GeoSearch report to identify records that indicate known or potential environmental hazards within the Corridor and/or surrounding area and to evaluate the likelihood for those hazards to impact the Corridor. Information obtained from the GeoSearch report was used to determine which facilities are located within the Corridor and have known or potential contamination associated with current and/or past uses. The GeoSearch report also includes a description, source reference, and date of acquisition.

In addition to the information obtained from the GeoSearch report, Braun Intertec reviewed select files at the MPCA. Pertinent information obtained from GeoSearch or the MPCA file review is included in the parcel summaries in Appendix E. Copies of the GeoSearch report and information reviewed as part of the MPCA file review are included as Appendices G and H, respectively.

C.2.a. Corridor

Parcels along the Corridor are listed on the following federal and/or state databases in the GeoSearch report:

Table 2: Regulatory Database Summary

Database Name	Parcel Numbers Identified
Resource Conservation and Recovery Act (RCRA) Hazardous Waste Generators (RCRAGR05)	1, 2, 3, 7, 10, 11, 14, 15, 16, 18, 26, 28, 43, 46, 68, 72, 75, 76, 81, 82, 83, 86, 93, 109, 110, 111, 116, 117, 122, 123, 133, 134, 135, 138, 139, 140, 141, 142, 143, 144, 148, 149, 151, 152, 155, 157, 159, 162, 163, 173, 174, 181, 182, 185, 188, 193, 195, 196, 197, 199, 202, 209, 210, 212, 214, 225, 226, 227, 232, 236, 241, 243, 250, 251, 257, 258, 259
Facility Registry System (FRS)	1, 2, 3, 5, 6, 7, 8, 10, 12, 13, 14, 16, 17, 18, 21, 23, 24, 26, 28, 31, 43, 53, 62, 65, 68, 72, 75, 76, 78, 81, 83, 93, 97, 104, 110, 111, 114, 116, 117, 122, 123, 125, 127, 131, 132, 133, 134, 138, 139, 140, 141, 142, 143, 144, 148, 149, 150, 151, 152, 153, 154, 155, 157, 158, 159, 162, 163, 172, 172, 173, 174, 179, 181, 182, 185, 188, 191, 195, 196, 197, 199, 201, 209, 210, 212, 214, 225, 230, 232, 233, 236, 237, 243, 247, 250, 253, 257

Database Name	Parcel Numbers Identified
RCRA No Longer Regulated Facility (NLRRCRAG)	1, 2, 5, 6, 8, 11, 12, 13, 17, 21, 23, 41, 75, 97, 132, 148, 151, 155, 171, 179, 181, 205, 207, 230, 233, 237
Hazardous Waste Generator Site (HWGS)	1, 2, 3, 6, 7, 8, 10, 11, 12, 13, 14, 15, 16, 17, 18, 21, 23, 24, 26, 28, 43, 46, 62, 68, 72, 75, 76, 78, 81, 82, 83, 86, 87, 93, 97, 109, 110, 111, 116, 117, 122, 123, 125, 127, 131, 132, 133, 134, 135, 138, 139, 140, 141, 142, 143, 144, 148, 149, 150, 151, 152, 153, 155, 157, 158, 159, 162, 163, 166, 171, 172, 173, 179, 181, 182, 185, 193, 195, 196, 197, 199, 201, 202, 205, 207, 208?, 209, 210, 212, 214, 225, 226, 227, 230, 232, 236, 237, 241, 243, 246, 247, 250, 258, 259, 260
Registered Storage Tanks (UAST)	1, 2, 3, 5, 6, 7, 8, 10, 11, 12, 13, 15, 16, 17, 21, 22, 23, 30, 32, 46, 53, 66, 68, 72, 75, 76, 84, 90, 102, 105, 109, 110, 111, 123, 125, 126, 139, 142, 153, 156, 157, 160, 162, 163, 166, 169, 171, 174, 179, 181, 189, 192, 193, 195, 196, 197, 199, 201, 202, 205, 207, 208, 210, 214, 230, 237, 241, 243, 256, 257, 258, 260
Spills Listings (PCASPILLS)	1, 2, 3, 6, 10, 16, 17, 21, 26, 29, 38, 39, 40, 42, 49, 50, 56, 58, 60, 64, 69, 70, 78, 101, 110, 111, 126, 129, 136, 149, 155, 156, 162, 173, 181, 191, 194, 195, 196, 199, 209, 211, 214, 231, 239, 240, 242, 243, 255, 256, 257
Tier II Facility Listing (TIERII)	3, 7, 10, 16, 78, 72, 105, 125, 209, 214, 247, 257
Water Discharge Permit (WDP)	1, 3, 5, 6, 7, 8, 10, 15, 17, 20, 21, 26, 75, 123, 126, 149, 157, 179, 181, 195, 196, 199, 202, 209, 212, 241, 256, 257, 260
National Pollutant Discharge Elimination System (NPDESRO5)	257
Permit Compliance System (PCSR05)	3, 257
Registered Leaking Storage Tanks (LUAST)	1, 2, 3, 5, 6, 7, 10, 11, 2, 13, 16, 17, 21, 25, 30, 31, 32, 38, 46, 66, 74, 75, 76, 96, 109, 110, 111, 123, 125, 126, 156, 160, 169, 174, 181, 189, 195, 196, 197, 199, 201, 202, 205, 207, 208, 210, 241, 243, 258, 260
Petroleum Brownfields Program (PBF)	2, 3, 5, 8, 75, 162, 172, 195, 196, 219, 258, 260,
Voluntary Investigation and Cleanup Program (VIC)	1, 2, 3, 5, 7, 8, 12, 17, 21, 47, 59, 75, 76, 88, 90, 107, 172, 190, 192, 195, 196, 258,
Site Response Section (SRS)	1, 2, 3, 7, 8, 17, 21, 59, 75, 192, 195, 196, 258
Industrial Stormwater Permit	250, 251, 259, 260
Construction Stormwater Permit	132, 244, 251, 269, 251
Registered drycleaning facilities (CLEANERS)	76, 109, 243

Database Name	Parcel Numbers Identified
Biennial Reporting System (BRS)	13, 225
Permitted Air Facilities (AIRS)	2, 3, 7, 16, 138, 141, 142, 151, 154, 193, 251, 260
Aerometric Information Retrieval System/Air Facility Subsystem (AIRSAFS)	1, 10, 17, 138, 141, 142, 148, 151, 154
Integrated Compliance Information System (ICIS)	1, 3, 105
Institutional Controls (IC)	7, 59
Comprehensive Environmental Response, Compensation and Liability Information System (CERCLIS)	3, 76,
CERCLIS NO Further Response Actions Planned (NFRAP)	3, 76,
State Superfund Site (SF)	76
Unpermitted Dumps (UNPERMDUMPS)	58
State Assessment Site (SAS)	7, 8, 58,
MDA Spills (AGSpills)	46, 58, 198
Toxic Release Inventory (TRI)	7
Open Solid Waste Facilities (SWF)	3
Emergency Response Notification System (ERNS)	52

Sites 1 – 47 are located within the M Segment, 48 – 56 are within the GV Segment, 57 – 123 are within the R Segment, 124 – 186 are within the C Segment, 187 – 240 are within the BP2 Segment, and 241 – 271 are within the BP1 Segment.

Pertinent information obtained from GeoSearch report is included in the parcel summaries in Appendix E.

Sites identified in the GeoSearch report that were determined to be located within or partially within the Corridor are presented in the table above.

Of these sites, Braun Intertec requested to review the MPCA files for 84 LUAST/PBF listings and 50 VIC/SRS listings that were identified in the GeoSearch report and were determined by Braun Intertec to be located within or partially within the Corridor. Supplemental environmental information was obtained from the MPCA Tank and Leak and/or VIC databases. Due to the volume of information obtained from the current assessment of MPCA file reviews, it was deemed impractical to include hard copies of the information as appendices to the bound hard copy of this report. However, this information is provided as Appendix H in the pdf version of this report included on the attached CD. Select diagrams and tables referencing the MPCA files subsurface investigations are included under the regulatory review narrative in the parcel summaries included as Appendix E.

C.2.b. Adjoining Properties

We reviewed the GeoSearch report for properties that adjoin the Corridor and are located within the approximate minimum search distances on the standard environmental records sources as specified in the ASTM Standard that may indicate a release or likely release of hazardous substances and/or petroleum products that may impact the Corridor. Based on factors that include regulatory status, distance from the Corridor, and/or location relative to the regional groundwater flow direction, as referenced in Section C.1., no facilities are identified in the GeoSearch report that warrant further consideration as potential for contamination.

C.2.c. Unmapped Sites

The GeoSearch report did not identify any “orphan” sites, which, because of poor or inadequate address information could not be mapped by GeoSearch.

C.3. Additional Government Records

C.3.a. Interviews

Braun Intertec made inquiry to the following individuals to obtain knowledge or records of historical and current land-use information regarding the Corridor and surrounding area:

- Gilbert Gabanski, Hennepin County Public Works, Environment and Energy Department, Land and Water, Contaminated Lands Unit
- Jim DeLuca, MnDOT Office of Environmental Stewardship
- John Crelly, Fire Chief, City of Golden Valley
- Mark Fairchild, Fire Chief, City of Robbinsdale
- Shelby Wolf, Deputy Fire Marshal, City of Crystal
- Kenneth Prillaman, Fire Chief, City of Brooklyn Park

Section D of this report provides the discussion of the results of Braun Intertec inquiry and presents any applicable information obtained.

C.3.b. Met Council

Braun Intertec obtained information regarding the project location and proposed construction plans from Met Council.

C.3.c. Minnesota County Well Index

The Minnesota Geological Survey (MGS) maintains the Minnesota County Well Index (MCWI), which is a limited database of water well records. The MCWI was accessed through the Minnesota Department of Health (MDH) website. Several private wells were identified within the Corridor. The locations of the wells are indicated on Figure 2.

Braun Intertec also accessed the MCWI to determine the location/boundaries of any Wellhead Protection Areas (WPA) that exist within the Corridor. According to the MCWI, four WPAs that intersect the Corridor were identified. The locations of these WPAs are shown on the sheet index in Figure 2.

C.3.d. State Regulatory Web Pages

Braun Intertec accessed MPCA's Aboveground/Underground Storage Tank Site Search web page, MDA's "What's In My Neighborhood" Agricultural Interactive Mapping web page, MPCA's Petroleum Remediation Program "What's In My Neighborhood" web page, and MPCA's "What's In My Neighborhood" web pages for information regarding the potential for sites located within the Corridor to be of environmental concern that were not identified in the GeoSearch report. The additional facilities identified that were not included in the GeoSearch report are included in the parcel summaries in Appendix E.

C.4. Historical-Use Information

The objective of the historical-use information review was to develop a history of the previous uses of properties located within the Corridor in order to help evaluate the likelihood of past uses having led to environmental issues that may affect the Corridor. Braun Intertec consulted only those historical sources that were readily available, practically reviewable, and likely to be useful to develop a history of previous uses of the Corridor and surrounding area within the time and cost constraints of this Modified Phase I ESA.

C.4.a. Aerial Photographs

Braun Intertec retained Historic Information Gatherers (HIG) to obtain aerial photographs for the Corridor and surrounding areas. Braun Intertec obtained aerial photographs from HIG for years 1937, 1947, 1956, 1960-62 (partial), 1966-67, 1970-71, 1978, 1984, 1987, 1994, 1997, 200, 2004, 2009, and 2012. Information obtained for low, medium, and high potential for contamination parcels from the aerial photographs review are included in the parcel summaries in Appendix E. Copies of the aerial photographs are attached in Appendix I.

C.4.b. City Directory Information

Braun Intertec retained HIG to obtain city directory information for streets within the Corridor. HIG provided city directories for approximate five-year intervals between the years 1930 and 2012. Braun Intertec reviewed the city directories to assist in identifying properties by name alone that could impact the Corridor. Information obtained for low, medium, and high potential for contamination parcels from the city directory review are included in the parcel summaries in Appendix E.

C.4.c. Fire Insurance Maps

Braun Intertec retained HIG to obtain historical fire insurance maps within the Corridor. Fire insurance maps were produced by private fire insurance companies and indicated uses of properties at specific dates. The information noted on the maps commonly includes uses of individual structures, locations of fuel and/or chemical storage tanks, and storage of other toxic substances. Maps were provided for the years 1885, 1892, 1904, 1912, 1914, 1924, 1929, 1930, 1940, 1950, 1952, and 1963. Each map may not provide coverage for the entire Corridor. Information obtained for low, medium, and high potential for contamination parcels from the review of the fire insurance maps are included in the parcel summaries in Appendix E. Copies of fire insurance maps are attached as Appendix J.

C.4.d. Historical Topographic Maps

The USGS topographic maps for the Corridor were reviewed for the years 1896, 1901, 1902, 1952, 1954, 1955, 1967, 1972, 1977, 1980, 1993, and 2013. Each map may not provide coverage for the entire Corridor. Information obtained for low, medium, and high potential for contamination parcels from review of the topographic maps are included in the parcel summaries in Appendix E. Copies of historical topographic maps are included in Appendix K.

C.4.e. Hennepin County Information

The Hennepin County Property Information website provides information on Hennepin County properties including but not limited to taxes due (tax statement), current and prior year taxes, assessment values, tax parcel description, and sales information. Property Identification Numbers (PINs) and other property information obtained for low, medium, and high potential for contamination parcels from review of the topographic maps are included in the parcel summaries in Appendix E. A list of the PINs for low, medium, and high potential for contamination parcels is included in Appendix L.

D. Interviews

Braun Intertec made inquiry to the following local government officials to obtain knowledge or records of historical and current land-use information regarding the Corridor and surrounding area:

- Gilbert Gabanski, Hennepin County Public Works, Environment and Energy Department, Land and Water, Contaminated Lands Unit
- Jim DeLuca, MnDOT Office of Environmental Stewardship
- John Crelly, Fire Chief, City of Golden Valley
- Mark Fairchild, Fire Chief, City of Robbinsdale
- Shelby Wolf, Deputy Fire Marshal, City of Crystal
- Kenneth Prillaman, Fire Chief, City of Brooklyn Park

No additional environmental concerns within the Corridor were identified during the interviews that were not already addressed in the GeoSearch report and included in this report for Sections B, C, and D.

E. Corridor Reconnaissance

Braun Intertec environmental professional Kelly Brown conducted reconnaissance of the Corridor on May 8, 21 and 27, June 22 and 24, and July 9, 2015. General observations were made along the length of the Corridor from public areas such as roads, sidewalks, retail/commercial buildings, and other publicly accessible areas. Observations of the facilities included, but were not limited to:

- Occupant/property use
- Type of structure
- Evidence of water wells and/or septic systems
- Evidence of storage tanks
- Evidence of use and/or storage of hazardous substances and/or petroleum products
- Evidence of spills or releases of hazardous substances and/or petroleum products
- Evidence of dumping, landfilling, or non-native fill

Specific observations of the parcels with a low, medium, and high potential for contamination parcels within the Corridor are included in Appendix E.

F. Current and Historical Corridor Land-Use

At the time of this assessment, the Corridor passed through primarily residential and commercial areas of Minneapolis, Golden Valley, Robbinsdale, Crystal, and Brooklyn Park.

Specifically, the M (Minneapolis) Segment has been developed since the 1880s, with residential and park areas on the west end, and commercial development on the east end. In the GV, R, C, and BP2 Segments, the Corridor follows an existing BNSF railroad track, which has been present since the 1880s. The remainder of the GV (Golden Valley) Segment has been residential and park areas since the 1930s, with additional development in the 1960s and 1970s. The R (Robbinsdale) Segment was mixed residential and farmland until the 1960s when the commercial district in the central portion of the segment and additional residences replaced the farmland. The C (Crystal) Segment includes the Crystal Airport in the central portion of the segment, with commercial and residential in the remainder of the segment. This area was developed in the 1950s and 1960s. The Corridor follows the railroad until the

central portion of the BP2 Segment, when the Corridor trends to the east. The BP2 and BP1 (Brooklyn Park) Segments were cultivated farmland until the 1950s and 1960s when the areas were converted to commercial with some residential areas. The northern end of the Corridor, in the BP1 Segment, has some formerly cultivated areas, which are currently undeveloped.

G. MnDOT Contamination Potential Ranking

As indicated, identified parcels within the Corridor were ranked/classified as having a low, medium, or high potential for contamination to the Corridor using criteria established by MnDOT, as amended and discussed in Section A.4. The remaining parcels, which were evaluated but did not meet the ranking criteria, are summarized in Appendix F, but are not otherwise included within this report. The rankings, defined by MnDOT, and amended for this project, and the number of parcels identified within each criterion is discussed in the following sections. A complete listing of these parcels is provided in Appendix A.

Low Potential for Contamination Parcels include parcels that are hazardous waste generators (HWGS), light industrial facilities, and possibly some parcels where site reconnaissance showed poor housekeeping or soil disturbance, etc.

Medium Potential for Contamination Parcels include parcels with closed leaking underground or aboveground storage tanks (LUASTs), all parcels with underground or aboveground storage tanks (UASTs), all parcels with historic or current vehicle and/or auto body repair activities and petroleum use or storage, and unintentional hazardous materials release sites.

High Potential for Contamination Parcels include all active and inactive Voluntary Investigation and Cleanup Program (VIC), all active Petroleum Brownfields Program (PBP) sites, Minnesota Environmental Response and Liability Act (MERLA) sites, all heavy industry sites, all active and inactive dumpsites, all Comprehensive Environmental Response, Compensation and Liability Information System (CERCLIS) sites, and all active LUAST sites.

Based on Braun Intertec's assessment, 271 parcels were identified within the Corridor as having a low, medium, or high potential for contamination. More specifically, 47 parcels were identified within the M Segment, 9 parcels were identified within the GV Segment, 67 parcels were identified in the R Segment, 63 parcels were identified in the C Segment, 54 parcels were identified in the BP2 Segment, and 31 parcels were identified in the BP1 Segment. The following table provides a summary of the ranked sites by segment:

Table 1. Parcels with Low, Medium, or High Potential for contamination by segment

Segment	# of Parcels with Low potential	# Parcels with Medium potential	# Parcels with High potential	Totals
M	9	28	10	47
GV	3	6	0	9
R	37	23	7	67
C	20	41	2	63
BP 2	24	26	4	54
BP-1	19	11	1	31
TOTAL	112	135	24	271

G.1. Parcels with Low Potential for Contamination

Braun Intertec identified 112 parcels with *Low Potential for Contamination* within the Corridor, as shown on Table 1 above. Specifically, 9 parcels were identified within the M segment, 3 parcels were identified in the GV segment, 37 parcels were identified in the R segment, 20 parcels were identified in the C segment, 24 parcels were identified in the BP2 Segment, and 19 parcels were identified in the BP1 Segment. The specific parcels identified are included in the Parcel Summary Table in Appendix A and on the Parcel Summary Table – Low Potential for Contamination Sites in Appendix B.

G.2. Parcels with Medium Potential for Contamination

Braun Intertec identified 135 parcels with *Medium Potential for Contamination* within the Corridor, as shown on Table 1 above. Specifically, 28 parcels were identified within the M segment, 6 parcels were identified in the GV segment, 23 parcels were identified within the R segment, 41 parcels were identified within the C segment, 26 parcels were identified within the BP2 Segment, and 11 parcels were identified within the BP1 Segment. The specific parcels identified are included in the Parcel Summary Table in Appendix A and on the Parcel Summary Table – Medium Potential for Contamination Sites in Appendix C.

G.3. Parcels with High Potential for Contamination

Braun Intertec identified 24 parcels with *High Potential for Contamination* within the Corridor, as shown on Table 1 above. Specifically, 10 parcels were identified within the M segment, seven parcels were identified within the R segment, two parcels were identified within the C segment, four parcels were identified within the BP2 Segment, and one parcel was identified within the BP1 Segment. The specific parcels identified are included in the Parcel Summary Table in Appendix A and on the Parcel Summary Table – High Potential for Contamination Sites in Appendix D.

H. Limitations and Data Gaps

This assessment was conducted in conformance with the USEPA All Appropriate Inquiry and ASTM 1527-13, as modified by MnDOT. The conclusions presented in this report are based on inquiries with public officials, available literature cited in this report, conditions noted at the time of the reconnaissance, and Braun Intertec's interpretation of the information obtained as part of this Modified Phase I ESA. Braun Intertec's conclusions are limited to the specific project and properties described in this report and by the accuracy and completeness of information provided by others.

An environmental site assessment cannot wholly eliminate uncertainty regarding the potential for recognized environmental conditions in connection with a property. Performance of this practice is intended to reduce, but not eliminate, uncertainty regarding the potential for recognized environmental conditions in connection with a property within reasonable limits of time and cost.

Braun Intertec's visual observations of portions of the Corridor were limited to public road right-of-ways, sidewalks, commercial/retail properties, and other areas that are accessible to the public. None of the buildings on the Corridor were inspected by Braun Intertec, as it was not within the scope of this Modified Phase I ESA. Contaminant sources and/or hazardous materials and substances may exist within the buildings in the Corridor or on areas of the parcels that were not visible from public areas.

Braun Intertec's review of historical sources was limited to those which were reasonably ascertainable and which were likely to be useful, accurate, or complete in terms of identifying obvious past uses and activities in the Corridor. In addition, Braun Intertec reviewed only as many historical sources that were needed to meet this objective.

No data gaps were identified during the Modified Phase I ESA process, with the exception that Braun Intertec did not interview property owners located within the Corridor.

The identified data gaps did not affect the environmental professional's ability to render opinions regarding conditions indicative of a release or threatened release. Information requested during the Modified Phase I ESA and received after issuance of the report will be forwarded to all parties relying on this report. An addendum will be provided if the information received alters the findings of the report.

I. Additional Considerations

Based on a review of historical information, many properties within the Corridor were farmsteads prior to the 1930s or have been residences since the 1880s. Fuel oil tanks or other hazardous materials may be present within these parcels. In those cases where the historical information confirmed the presence

of tanks or other contaminants, the parcel was assigned a parcel number and was ranked in accordance with the MnDOT definitions of having a low, medium, or high potential for contamination. For those parcels where the historical information did not confirm tanks or hazardous materials were present, the parcels were not assigned a parcel number and were not ranked. These additional parcels are summarized on the table in Appendix F.

J. Recommendations

Drilling Investigation activities, including the collection and analysis of soil and groundwater samples, are recommended along the Corridor where a medium or high potential for contamination is both adjacent to or in close proximity to the Corridor or where significant amounts of fill materials will be excavated during future construction.

K. References

References are listed in Appendix M.

L. Statement and Qualifications

We have the specific qualifications based on education, training, and experience to assess a property of the nature, history and setting of the subject area. The Modified Phase I ESA was conducted in general conformance with the USEPA All Appropriate Inquiry and ASTM 1527-13, as modified by MnDOT for transportation projects.

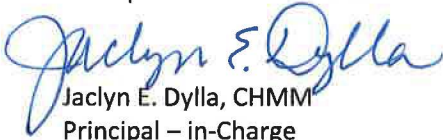
BRAUN INTERTEC CORPORATION



Jennifer B. Wolff, PG, CPG
Senior Scientist – Report Preparer

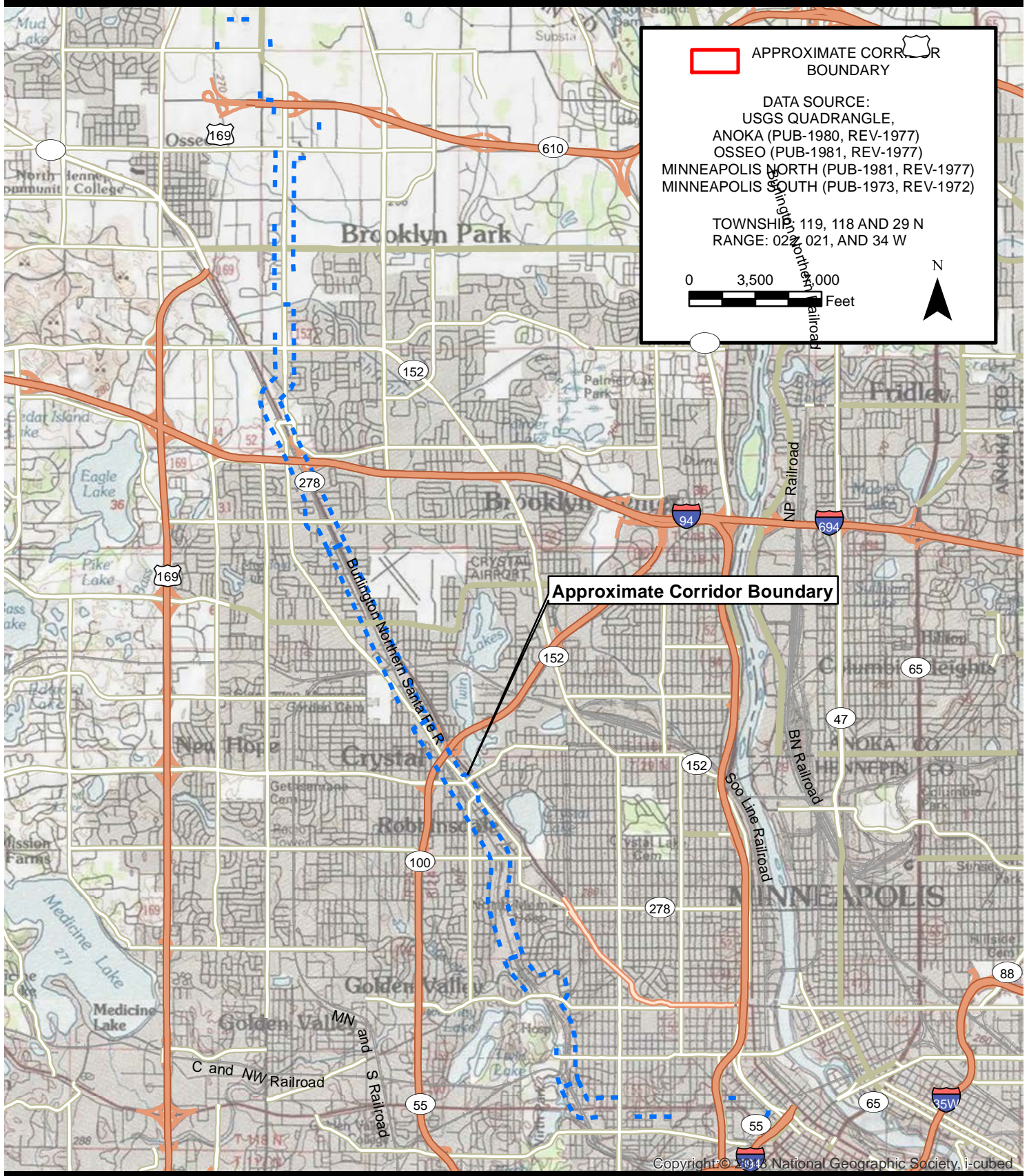


Kenneth A. Larsen, PG, PE
Principal – Technical Review



Jaclyn E. Dylla, CHMM
Principal – in-Charge

Figures



Project No:	B1502383
Drawing No.	B1502383_SiteLocMap
Scale:	1 in = 7,000 ft
Drawn By:	CMF
Date Drawn:	08/31/2015
Checked By:	JW
Last Modified:	8/31/15





CORRIDOR LOCATION MAP
 Phase I Environmental Site Assessment
 Metro Blue Line Extension LRT Project
 Hennepin County, Minnesota

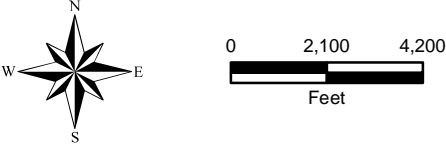
BRAUN
INTERTEC

11001 Hampshire Avenue So.
 Minneapolis, MN 55438
 PH. (952) 995-2000
 FAX (952) 995-2020

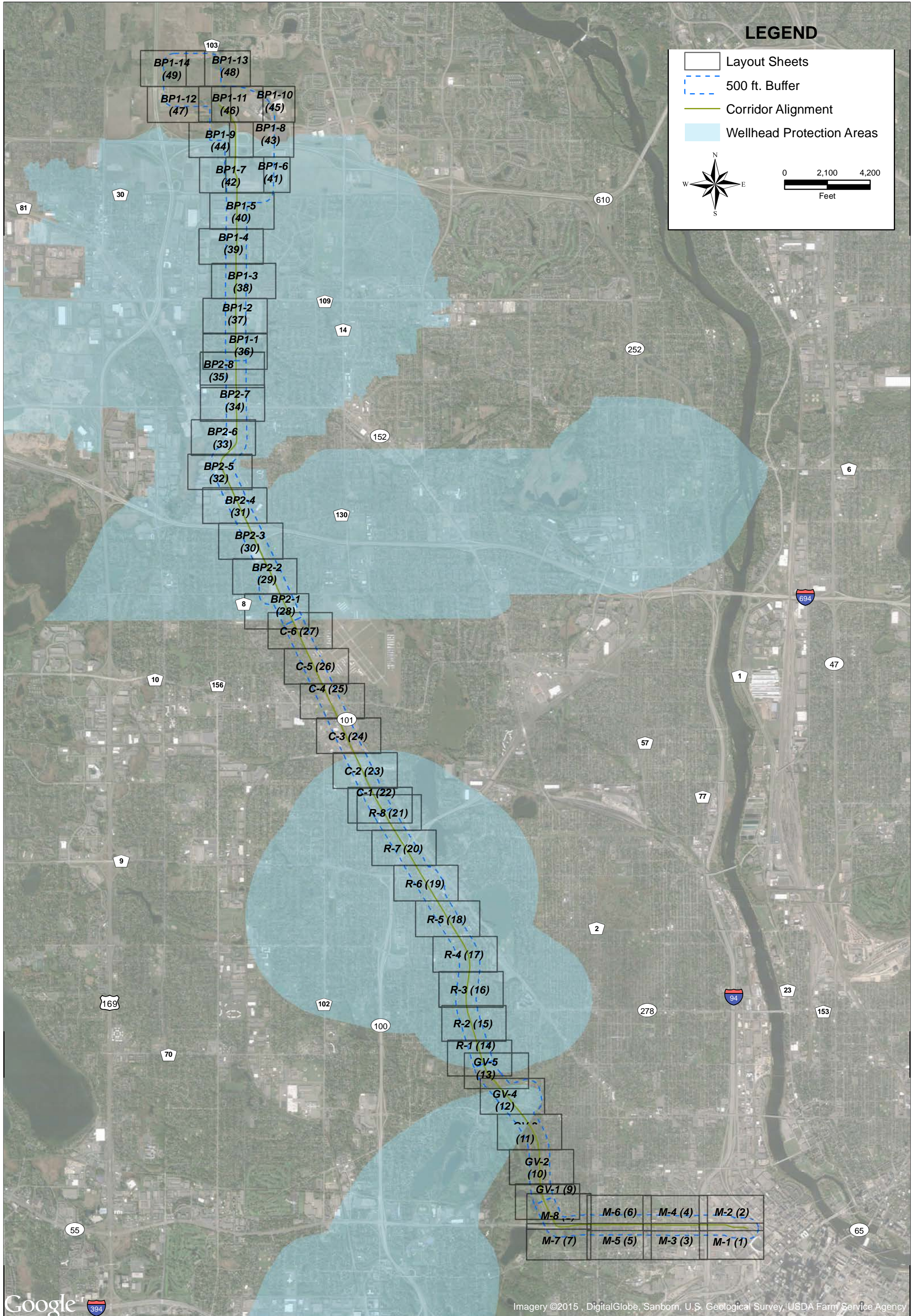
Sheet:
 1 of 1
 Fig:
 1

LEGEND

-  Layout Sheets
-  500 ft. Buffer
-  Corridor Alignment
-  Wellhead Protection Areas



0 2,100 4,200
Feet



Imagery ©2015, DigitalGlobe, Sanborn, U.S. Geological Survey, USDA Farm Service Agency

Project No. B1502383
 Drawing No. B1502383_SheetLayout.mxd
 Scale: 1" = 4,200'
 Drawn By: CMF
 Date Drawn: 08/31/2015
 Checked By: JW
 Last Modified: 08/31/15



PROJECT CORRIDOR FEATURES

Sheet Overview - Phase I Environmental Site Assessment
 Metro Blue Line Extension LRT Project
 Hennepin County, Minnesota



Figure 2



The following detailed figures are not included in this version of the Modified Phase I ESA report due to volume.

They are available for viewing at the Blue Line Extension Project Office at 5514 West Broadway Ave, Suite 200, Crystal, MN 55428. Or, can be requested by contacting Robin Caufman at (651) 602-1457.

Figures of “Project Corridor Features” for the following segments:

Minneapolis

Golden Valley

Robbinsdale

Crystal

Brooklyn Park 1

Brooklyn Park 2

Appendix A
Parcel Summary Table

Segment	Parcel	Figure Number	Name	Rank	Rationale
M	1	2-M, sheet 1	Ford Center	High	ASTs, closed LUST, closed spill, inactive VIC, hazardous waste generator
M	2	2-M, sheets 1 & 2	Be The Match	High	AST, closed LUST, closed spill, active VIC, active PBF, hazardous waste generator
M	3	2-M, sheet 1	Hennepin County Energy Recovery Center and Caribou Coffee	High	Past filling stations and auto repair facilities, ASTs, USTs, closed LUST, closed spill, inactive VIC, inactive PBP, inactive CERCLIS, hazardous waste generator
M	4	2-M, sheet 2	Fulton Brewing	Low	Past and current commercial uses
M	5	2-M, sheet 2	Parcel Under Construction	High	ASTs, USTs, closed LUST, active VIC, active PBP, hazardous waste generator
M	6	2-M, sheets 1 & 2	Holiday Gasoline Station/Convenience Store	Medium	Past and current auto repair and filling station, USTs, closed LUST, closed spill, hazardous waste generator
M	7	2-M, sheet 2	Weather Rite	High	Past and commercial uses including machine shop, metal manufacturing, waste (garbage) management, and automotive repair and junkyard, USTs, closed LUST, inactive VIC, active SAS, hazardous waste generator
M	8	2-M, sheet 2	Junction Flats	High	Past auto repair and junkyard, ASTs, USTs, active VIC, inactive PBP, active SR, hazardous waste generator
M	9	2-M, sheet 1	Mary My Hope Children's Center	Medium	Past commercial uses including auto repair activities
M	10	2-M, sheets 1 & 2	Metro Transit Garage and Offices	Medium	Past and current auto repair activities, ASTs, USTs, closed LUST, closed spill, hazardous waste generator
M	11	2-M, sheet 1	City of Minneapolis Department of Public Works Royalston Maintenance Facility	Medium	Past coal yard, ASTs, USTs, closed LUST, hazardous waste generator
M	12	2-M, sheet 1	Sharing and Caring Hands	High	Past auto repair and filling stations, UST, closed LUST, inactive VIC, hazardous waste generator
M	13	2-M, sheet 1	Commercial Buildings	Medium	USTs, closed LUST, hazardous waste generator
M	14	2-M, sheet 2	Wells Fargo Bank	Medium	Storage tanks, hazardous waste generator
M	15	2-M, sheet 1	Commercial Building	Medium	ASTs, hazardous waste generator
M	16	2-M, sheet 1	G&K Services	Medium	ASTs, USTs, closed LUST, closed spill site, hazardous waste generator
M	17	2-M, sheet 2	Velocity Express	High	ASTs, USTs, closed LUST, closed spill site, active VIC, hazardous waste generator
M	18	2-M, sheet 2	Commercial Building	Low	Hazardous waste generator
M	19	2-M, sheet 2	Velocity Express	Low	Past and current commercial uses
M	20	2-M, sheet 3	Heritage Park	Medium	Former filling station
M	21	2-M, sheet 4	Heritage Park II	High	Past commercial uses, USTs, closed LUST, closed spill, inactive VIC, hazardous waste generator
M	22	2-M, sheet 3	Apartment Building	Medium	AST, USTs
M	23	2-M, sheet 3	Commercial Buildings	Medium	Past filling station, USTs, hazardous waste generator
M	24	2-M, sheet 3	Commercial Building	Medium	Past dry cleaner, automotive service training school, hazardous waste generator
M	25	2-M, sheet 4	Hennepin County Summer Library	Medium	Closed LUST site
M	26	2-M, sheet 3	Undeveloped Parcel	Medium	Past filling station, closed spill site, hazardous waste generator
M	27	2-M, sheet 4	Harvest Preparatory School and A.M.W. Church	Medium	Past commercial uses including filling stations

Segment	Parcel	Figure Number	Name	Rank	Rationale
M	28	2-M, sheet 4	Donal Fraser Early Childhood Family Development Center	Low	Past commercial uses, hazardous waste generator
M	29	2-M, sheet 3	Olson Townhomes	Medium	Closed spill site
M	30	2-M, sheet 3	Park Plaza Apartments II	Medium	UST and closed LUST
M	31	2-M, sheet 4	Seed Academy/Harvest Prep School	Medium	Past and current commercial uses including auto repair, closed LUST
M	32	2-M, sheet 3	Park Plaza Apartments	Medium	Past commercial uses including a filling station, UST, closed LUST
M	33	2-M, sheet 4	Kingdom of Jehovah's Witnesses	Low	Past and current use as a church
M	34	2-M, sheet 4	Residential Duplex	Medium	Past filling station
M	35	2-M, sheet 5	Harrison Park	Medium	Past commercial uses including filling stations
M	36	2-M, sheet 6	Zion Baptist Church	Low	Past and current commercial use
M	37	2-M, sheet 6	La Crèche Early Childhood Center	Low	Past and current commercial uses including manufacturing
M	38	2-M, sheet 5	Bruns Residence	Medium	Closed spill site, closed LUST
M	39	2-M, sheet 5	Tompkins Residence	Medium	Closed spill site
M	40	2-M, sheet 5	Skoug Residence	Medium	Closed spill site
M	41	2-M, sheet 6	Baur Residence	Low	Hazardous waste generator
M	42	2-M, sheet 6	Hoang Residence	Medium	Closed spill site
M	43	2-M, sheet 7	Moen Property	Low	Hazardous waste generator
M	44	2-M, sheets 7 & 8	Former Railroad Area	Medium	Former commercial buildings and railroad tracks
M	45	2-M, sheet 7	Railroad Right of Way	Medium	Past and current railroad use
M	46	2-M, sheets 7-8	Theodore Wirth Park Golf Course	Medium	Past and current use as golf course, ASTs, USTs, closed LUST, closed MDA spill, hazardous waste generator
M	47	2-M, sheet 8	Undeveloped Parcels	High	Inactive VIC site
GV	48	2-GV, sheets 1-5	Railroad Right of Way	Medium	Past and current railroad use
GV	49	2-GV, sheet 1	Wilson Residence	Medium	Closed spill site
GV	50	2-GV, Sheet 2	Krawczyk Residence	Medium	Closed spill site
GV	51	2-GV, sheet 2	The Family Partnership	Low	Past and current commercial use for offices
GV	52	2-GV, sheets 2 & 3	Runion Residence	Low	Identified on ERNS
GV	53	2-GV, sheet 4	St. Margaret Mary Catholic Church	Medium	Past and current use as a church, USTs, and ground disturbance and fill of unknown origin
GV	54	2-GV, sheet 4	Golden Valley Fire Station	Low	Current use as a fire station
GV	55	2-GV, sheets 4 and 5	Mary Hills Nature Area	Medium	Possible past dumping or fill activities
GV	56	2-GV, Sheet 5	Single Family Residences	Medium	Closed spill site
R	57	2-R, sheets 1-8	Railroad Right of Way	Medium	Past and current railroad use
R	58	2-R, sheets 1-4	Walter Sochacki Community Park	High	Unpermitted dump site, active Sate Assessment site, closed spill site
R	59	2-R, sheet 2	South Halifax park	High	Inactive VIC site, inactive SRS site, restrictive covenant
R	60	2-R, sheet 3	Bratsch Residence	Medium	Closed spill site
R	61	2-R, sheet 3	Xcel Energy Indiana Substation	Medium	Current use as an electric substation
R	62	2-R, sheet 3	Markeson Residence	Low	Non-generator of hazardous waste
R	63	2-R, sheet 4	Lee Square	Low	Past use as a school
R	64	2-R, sheet 4	Gray Residence	Medium	Closed spill site
R	65	2-R, sheet 4	Lee Park	Low	Past use as a school
R	66	2-R, sheets 4 & 5	Windsor Court	Medium	USTs, closed LUST
R	67	2-R, sheet 5	Bridgeway Apartments	Low	Past commercial uses
R	68	2-R, sheet 5	Undeveloped Land	Medium	Past bus garage, USTs, hazardous waste generator
R	69	2-R, sheet 5	Beard Residence	Medium	Closed spill site
R	70	2-R, sheet 5	Kasprick Residence	Medium	Closed spill site
R	71	2-R, sheets 5 & 6	Park	Low	Past and current use as park with swimming pool

Segment	Parcel	Figure Number	Name	Rank	Rationale
R	72	2-R, sheet 6	Sacred Heart Catholic Church & School	Medium	USTs, hazardous waste generator
R	73	2-R, sheet 6	P&D Mechanical Contractor	Low	Past and current commercial uses
R	74	2-R, sheet 6	Parking Lot	Medium	Past commercial uses, closed LUST
R	75	2-R, sheet 6	Walgreens	High	Past commercial uses include filling station and auto repair facilities, ASTs, USTs, closed LUST, PBP site, inactive VIC site, hazardous waste generator
R	76	2-R, sheet 6	Broadway Court Apartments	High	Former gasoline station and dry cleaner, USTs, closed LUST, inactive VIC, inactive CERCLIS, inactive Superfund, hazardous waste generator
R	77	2-R, sheet 6	Robin Hotel	Low	Past and current commercial use
R	78	2-R, sheet 6	Robbinsdale Police and Fire Department and Water Filtration Plant #1	Medium	Hazardous waste generator, closed spill site
R	79	2-R, sheet 6	Papa John's Pizza/Payday	Low	Past and current commercial uses (mainly retail)
R	80	2-R, sheet 6	Commercial Building	Low	Past and current commercial uses (mainly retail)
R	81	2-R, sheet 6	Lions Gym & Wellness Center	Low	Hazardous waste generator
R	82	2-R, sheet 6	Minnesota Dental Group	Low	Current commercial use, hazardous waste generator
R	83	2-R, sheet 6	Strait Stuff Screen Printing	Low	Hazardous waste generator
R	84	2-R, sheet 6	Pawn America	Medium	Past commercial uses including filling station, USTs
R	85	2-R, sheet 6	Chestnut Café	Medium	Past and current commercial uses including dry cleaning
R	86	2-R, sheet 6	Robbinsdale Marine	Medium	Past and current commercial use as boat sales and service, hazardous waste generator
R	87	2-R, sheet 6	Hirshfields/Ace Hardware	Low	Past and current commercial use (retail hardware), hazardous waste generator
R	88	2-R, sheet 6	Wuollet Bakery & Espresso	High	Past and current commercial uses, former dry cleaner, inactive VIC site
R	89	2-R, sheet 6	Home Options	Low	Past and current commercial uses
R	90	2-R, sheet 6	Hubbard Market Place	High	Past auto repair activities, USTs, inactive VIC
R	91	2-R, sheet 6	Parking Lot	Low	Past commercial uses (retail and restaurants)
R	92	2-R, sheet 6	Outdoor Patio	Low	Past commercial uses
R	93	2-R, sheet 6	Commercial Building	Low	Hazardous waste generator
R	94	2-R, sheet 6	Canton Garden Restaurant	Low	Past and current commercial uses
R	95	2-R, sheet 6	McDonalds	Low	Past commercial uses including a car wash
R	96	2-R, sheet 6	Retail Commercial Building	Medium	Past and current commercial uses (mainly retail), closed LUST
R	97	2-R, sheet 6	Golden Age Design	Low	Hazardous waste generator
R	98	2-R, sheet 6	Parking Lot	Low	Past commercial uses
R	99	2-R, sheet 6	Hackenmueller's Meat Market	Low	Past and current commercial uses
R	100	2-R, sheet 6	Commercial Building	Low	Past and current commercial uses
R	101	2-R, sheet 6	Northside Oriental	Medium	Past auto repair activities, closed spill site
R	102	2-R, sheet 6	Nonna Rosa's	Medium	Past commercial use include dry cleaner, USTs
R	103	2-R, sheet 6	Commercial Building	Low	Past and current commercial uses
R	104	2-R, sheet 6	EMI Audio	Low	Past and current commercial uses
R	105	2-R, sheet 6	Commercial Building	Medium	Past and current commercial uses, UST
R	106	2-R, sheet 6	Tailor Shop	Medium	Past cleaners
R	107	2-R, sheet 6	The Steinhauser Group	High	Past dry cleaner, inactive VIC site
R	108	2-R, sheet 6	Robbinsdale Gallery of Art/Historical Museum/Library	Low	Past and current commercial uses

Segment	Parcel	Figure Number	Name	Rank	Rationale
R	109	2-R, sheet 6	Pilgrim Cleaners	Medium	Past commercial uses including gasoline station, current dry cleaner, USTs, closed LUST, hazardous waste generator
R	110	2-R, sheet 6	Sipe's Shell	Medium	Past and current use as a gasoline station, UST, closed LUST, spill site, hazardous waste generator
R	111	2-R, sheet 6	BP Gas Station	Medium	Past and current use as a gasoline station, USTs, closed LUST, spill site, hazardous waste generator
R	112	2-R, sheet 6	Commercial Building	Low	Past and current commercial uses
R	113	2-R, sheet 6	Commercial Building	Low	Past and current commercial uses
R	114	2-R, sheet 6	Metro Building Companies	Low	Past and current commercial uses
R	115	2-R, sheet 6	Sawhorse Designers & Builders	Low	Past and current commercial uses
R	116	2-R, sheet 6	Chirocenter Robbinsdale Chiropractic	Low	Hazardous waste generator
R	117	2-R, sheet 6	A Gentle Dental Center	Low	Hazardous waste generator
R	118	2-R, sheet 6	Redeemer Evangelical Lutheran Church	Low	Past and current use as a church
R	119	2-R, sheet 6	TCF Bank	Low	Past and current commercial use
R	120	2-R, sheet 6	Washburn & McReavy Robbinsdale Chapel	Low	Past and current use as a funeral center
R	121	2-R, sheet 6	Robbinsdale Masonic Center	Low	Past and current commercial use
R	122	2-R, sheet 8	Osterhus Bibles, Books & Gifts	Low	Hazardous waste generator
R	123	2-R, sheet 8	City of Robbinsdale Municipal Shop	Medium	AST, UST, closed LUST, hazardous waste generator
C	124	2-C, sheets 1-6	Railroad Right of Way	Medium	Past and current railroad use
C	125	2-C, sheet 1	Century Link	Medium	ASTs, USTs, closed LUST, hazardous waste generator.
C	126	2-C, sheet 1	Blind Installation & Repair	Medium	USTs, closed LUST
C	127	2-C, sheet 1	Commercial Building	Low	Hazardous waste generator
C	128	2-C, sheet 1	Steve O's Bar & Grill	Low	Past and current commercial use
C	129	2-C, sheet 1	Full Proof Ministry and Thomas Tool & Supply	Medium	Closed spill site
C	130	2-C, sheets 1 & 2	Crystal Wine & Spirits	Low	Past and current commercial use
C	131	2-C, sheets 1 & 2	O'Reilly Auto Parts	Low	Hazardous waste generator
C	132	2-C, sheet 2	Crystal Public Works Facility	Low	Hazardous waste generator
C	133	2-C, sheet 2	Doyle's Bowling & Lounge	Low	Hazardous waste generator
C	134	2-C, sheet 2	Fun Services	Medium	Past commercial uses including a machine shop, hazardous waste generator
C	135	2-C, sheet 2	Washburn-McReavy Funeral Chapel	Low	Hazardous waste generator
C	136	2-C, sheet 2	Stormwater pond	Medium	Former auto repair activities, closed spill site
C	137	2-C, sheet 2	Tim's Tree Service	Low	Past and current commercial use
C	138	2-C, sheet 2	Crystal Collision Center and Car Wash	Medium	Auto repair activities, hazardous waste generator
C	139	2-C, sheet 2	Kilmer Electric	Medium	Auto repair activities, AST, UST, hazardous waste generator
C	140	2-C, sheet 2	Auto Plus Auto Parts	Medium	Automotive machine shop and other possible auto repair activities, hazardous waste generator
C	141	2-C, sheet 2	Midwest Motor Craft	Medium	Auto repair activities, hazardous waste generator
C	142	2-C, sheet 2	North Suburban Towing and Thomas Auto Body & Collision	Medium	Auto repair activities, ASTs, hazardous waste generator

Segment	Parcel	Figure Number	Name	Rank	Rationale
C	143	2-C, sheet 3	Bill's Economy Glass	Medium	Past and current commercial uses including machine shop and manufacturing, hazardous waste generator
C	144	2-C, sheet 3	Multi-Tenant Commercial Building	Medium	Auto repair activities, hazardous waste generator
C	145	2-C, sheets 2 & 3	Vacant Parcel	Low	Historical ground disturbance areas
C	146	2-C, sheets 2 & 3	The Phone Guys/S&S Communications	Low	Past and current commercial uses
C	147	2-C, sheets 2 & 3	Golden Valley Heating & Air	Medium	Past and current commercial uses including manufacturing
C	148	2-C, sheet 3	BGD Companies	Medium	Past use as foundry, hazardous waste generator
C	149	2-C, sheet 3	Vacant Parcel	Medium	Past foundry and auto repair activities, closed spill site, hazardous waste generator
C	150	2-C, sheet 3	All American Storage	Medium	Past and current commercial uses including machine shops and manufacturing, hazardous waste generator
C	151	2-C, sheet 3	Collision Masters	Medium	Auto repair activities, past use as a tool manufacturer, hazardous waste generator
C	152	2-C, sheet 3	Standard Water Control Systems	Medium	Metal fabrication operations, hazardous waste generator
C	153	2-C, sheet 3	Skip's Auto Repair	Medium	Auto repair activities, AST, hazardous waste generator
C	154	2-C, sheet 3	CBF by Pierre	Low	Air permit site
C	155	2-C, sheet 3	Miller Diversified Machining	Medium	Auto repair activities, closed spill site, hazardous waste generator
C	156	2-C, sheet 3	Creative Partnership/Rise	Medium	UST, close LUST, close spill site
C	157	2-C, sheet 3	Curbside Waste	Medium	ASTs, USTs, waste services, hazardous waste generator.
C	158	2-C, sheet 3	Industrial Stainless Supply Inc.	Medium	Machine shop and manufacturing, potential dump or fill site, hazardous waste generator
C	159	2-C, sheet 3	Beaver Machine	Medium	Potential dump or fill site, machine shop use, hazardous waste generator
C	160	2-C, sheet 3	Holiday	Medium	Gasoline station, USTs, closed LUST
C	161	2-C, sheet 3	Car Hop	Medium	Former gasoline station
C	162	2-C, sheet 3	Commercial Building	High	USTs, closed spill site, active PBP site, hazardous waste generator, machine shops
C	163	2-C, sheets 3 & 4	Crystal Business Commons	Medium	Automotive, AST, hazardous waste generator
C	164	2-C, sheet 3	Max It Pawn Shop	Low	Past and current commercial uses
C	165	2-C, sheet 3	Steen Engineering and Douglas Storage	Medium	Past commercial uses including repair activities and past outdoor storage of unknown materials
C	166	2-C, sheet 3	U-Haul Center	Medium	USTs, hazardous waste generator
C	167	2-C, sheets 3 & 4	Cedarwood Apartments	Medium	Past commercial uses including repair facility
C	168	2-C, sheets 3 & 4	The Schrader Building	Medium	Past and current commercial uses including auto sales and outdoor storage
C	169	2-C, sheet 4	Undeveloped Land	Medium	former gasoline station, UST, closed LUST
C	170	2-C, sheet 4	Becker Park and Crystal Arts and Activity Center	Medium	Former gasoline station
C	171	2-C, sheet 4	Undeveloped Land	Medium	AST, hazardous waste generator
C	172	2-C, sheet 4	Cell Tower and Undeveloped Land	High	Former gasoline station and auto repair, inactive VIC site, inactive PBP site, hazardous waste generator
C	173	2-C, sheet 4	Bass Lake Center	Medium	Closed spill site, hazardous waste generator
C	174	2-C, sheet 4	Undeveloped Land	Medium	Gasoline station, USTs, closed LUST, hazardous waste generator
C	175	2-C, sheet 4	Multi-Tenant Commercial Buildings	Low	Past and current commercial (mainly retail) uses
C	176	2-C, sheet 4	Parking Lot	Medium	Former gasoline station
C	177	2-C, sheet 4	Retail Stores	Low	Past and current commercial uses

Segment	Parcel	Figure Number	Name	Rank	Rationale
C	178	2-C, sheet 4	Cities Auto	Low	Current commercial uses
C	179	2-C, sheet 4	Crystal Medical Center	Medium	AST, hazardous waste generator
C	180	2-C, sheets 4 & 5	Undeveloped Land	Low	Past commercial uses
C	181	2-C, sheets 5 & 6	Crystal Airport	Medium	ASTs, USTs, closed LUST, closed spill site, hazardous waste generator
C	182	2-C, sheet 5	Moy Residence	Low	Hazardous waste generator
C	183	2-C, sheets 5 & 6	North Star Inn & Suites	Low	Past and current commercial uses
C	184	2-C, sheet 6	Rostamo's Bar	Low	Past and current commercial (restaurant and bar) uses
C	185	2-C, sheet 6	Jack's Auto Sales	Medium	Auto repair activities, hazardous waste generator
C	186	2-C, sheet 6	Premier Motors	Low	Past and current commercial uses
BP2	187	2-BP2, sheets 1-6	Railroad Right of Way	Medium	Past and current railroad use
BP2	188	2-BP2, sheet 1	Minneapolis LU539 Pipefitters	Low	Hazardous waste generator
BP2	189	2-BP2, sheet 1	The Waterford	Medium	USTs, closed LUSTs
BP2	190	2-BP2, sheet 1	Former Latzke Iron Works	High	Inactive VIC site
BP2	191	2-BP2, sheet 1	Multi-Tenant Commercial Building	Medium	Closed spill site, hazardous waste generator
BP2	192	2-BP2, sheet 1	Waterford Senior Townhomes	High	ASTs, USTs, inactive VIC
BP2	193	2-BP2, sheet 1	Stormwater Pond and Undeveloped Land	Medium	USTs, hazardous waste generator
BP2	194	2-BP2, sheet 2	The Groves Apartments	Medium	Closed spill site
BP2	195	2-BP2, sheet 2	Stormwater Pond	High	USTs, closed LUST, closed spill site, active PBP, active VIC, hazardous waste generator, exterminating company
BP2	196	2-BP2, sheet 2	Metro Transit Bottineau & 63rd Park & Ride	High	ASTs, USTs, closed LUST, closed PBP, inactive VIC, hazardous waste generator
BP2	197	2-BP2, sheet 2	TN Transportation and Automotive	Medium	Auto repair facilities, ASTs, USTs, closed LUST, hazardous waste generator
BP2	198	2-BP2, sheet 2	Nguyen Residence	Medium	Closed AgSpill
BP2	199	2-BP2, sheets 2 & 3	O'Reilly Auto Parts	Medium	ASTs, USTs, closed LUST, closed spill site, hazardous waste generator
BP2	200	2-BP2, sheet 3	OMCM Marketing Solutions	Low	Current commercial use
BP2	201	2-BP2, sheet 4	Broadway Rentals	Medium	USTs, ASTs, closed LUST, hazardous waste generator
BP2	202	2-BP2, sheet 4	Carmax	Medium	USTs, ASTs, closed LUST, hazardous waste generator
BP2	203	2-BP2, sheet 4	Lights on Broadway	Low	Past and current commercial uses
BP2	204	2-BP2, sheet 4	Wagner's Drive In	Low	Past and current commercial uses
BP2	205		Interstate North Business Center	Medium	USTs, closed LUST, hazardous waste generator
BP2	206	2-BP2, sheet 4	All American Recreation	Low	Past and current commercial uses
BP2	207	2-BP2, sheet 4	U-Haul	Medium	Former gasoline station, USTs, closed LUST, hazardous waste generator
BP2	208	2-BP2, sheet 4	Wendy's	Medium	Former gasoline station, USTs, closed LUST, hazardous waste generator
BP2	209	2-BP2, sheets 4 & 5	Americold Distribution	Medium	Closed spill site, hazardous waste generator
BP2	210	2-BP2, sheet 5	Mister Carwash	Medium	Former gasoline station, USTs, closed LUST, hazardous waste generator
BP2	211	2-BP2, sheet 5	Consignment Central	Medium	Former motorcycle sales and service, closed spill site
BP2	212	2-BP2, sheet 5	North American Gear & Forge	Medium	Past and current commercial uses including machine shop, hazardous waste generator
BP2	213	2-BP2, sheet 5	Prince of Peace Lutheran Church	Low	Past residential and commercial uses

Segment	Parcel	Figure Number	Name	Rank	Rationale
BP2	214	2-BP2, sheet 5	Penske	Medium	UST, AST, closed spill site, hazardous waste generator
BP2	215	2-BP2, sheet 5	Mayer Electric	Low	Past and current commercial uses
BP2	216	2-BP2, sheet 5	Lots Survey Company	Low	Past and current commercial uses
BP2	217	2-BP2, sheet 5	Distinguished Landscape	Low	Past and current commercial uses
BP2	218	2-BP2, sheet 5	Brooklyn Park West Fire Station	Low	Current commercial uses
BP2	219	2-BP2, sheet 5	American Furniture Market	Medium	Inactive PBP site
BP2	220	2-BP2, sheet 5	Modern Dental Studio	Medium	Former filling/service station
BP2	221	2-BP2, sheets 5 & 6	Public Storage	Low	Current commercial uses
BP2	222	2-BP2, sheet 6	Sisaket Plaza	Low	Past and current commercial uses
BP2	223	2-BP2, sheet 6	Broadway Party & Tent Rental	Low	Past and current commercial uses
BP2	224	2-BP2, sheet 6	Magic Carpets Flooring Center	Low	Past and current commercial uses
BP2	225	2-BP2, sheet 6	Target	Low	Current commercial use, hazardous waste generator
BP2	226	2-BP2, sheet 6	Funk Animal Hospital	Low	Hazardous waste generator
BP2	227	2-BP2, sheets 6 & 7	Cub Foods	Low	Past and current commercial uses, hazardous waste generator
BP2	228	2-BP2, sheet 6	US Bank	Low	Current commercial uses
BP2	229	2-BP2, sheets 6 & 7	McDonalds	Low	Current commercial uses
BP2	230	2-BP2, sheet 7	Buerkle Acura	Medium	ASTs, USTs, hazardous waste generator.
BP2	231	2-BP2, sheet 7	Popeye's	Medium	Closed spill site
BP2	232	2-BP2, sheet 7	Wells Fargo Bank	Low	Past and current commercial uses, hazardous waste generator
BP2	233	2-BP2, sheet 7	Northwind Plaza	Medium	Former dry cleaner
BP2	234	2-BP2, sheet 7	Baker's Square	Low	Current commercial uses
BP2	235	2-BP2, sheet 7	Arby's	Low	Current commercial uses
BP2	236	2-BP2, sheet 7	CVS Pharmacy 4597	Low	Hazardous waste generator
BP2	237	2-BP2, sheet 7	Park Square	Medium	UST, hazardous waste generator, past use as a possible dry cleaners
BP2	238	2-BP2, sheet 8	Brooklyn Park Evangelical Free Church	Low	Past residential and agricultural use, current church use
BP2	239	2-BP2, sheet 8	Residential Dwelling	Medium	Closed spill site
BP2	240	2-BP2, sheet 8	Prusinowski Residence	Medium	Closed spill site
BP1	241	2-BP1, sheets 1 & 2	North Hennepin Community College	Medium	ASTs, USTs, closed LUST, hazardous waste generator
BP1	242	2-BP1, sheet 2	Ronning Residence	Medium	Closed spill site
BP1	243	2-BP1, sheet 2	Broadway Square	Medium	Former gasoline station and drycleaner, USTs, closed LUST, closed spill, hazardous waste generator
BP1	244	2-BP1, sheet 3	Hennepin County Library	Low	Soil disturbance
BP1	245	2-BP1, sheet 4	Berean Baptist Church	Low	Church and residential uses
BP1	246	2-BP1, sheets 4 & 5	Commercial Building	Low	Hazardous waste generator, on-site generator
BP1	247	2-BP1, sheet 5	Commercial Building	Low	Hazardous waste generator
BP1	248	2-BP1, sheet 5	Crosstown North Business Center	Low	Current commercial uses
BP1	249	2-BP1, sheet 5	Commercial Building	Low	Past and current unknown uses of parcel
BP1	250	2-BP1, sheet 5	Crosstown North Business Center	Low	Hazardous waste generator
BP1	251	2-BP1, sheet 7	Liberty Carton and Star Exhibits	Low	Hazardous waste generator
BP1	252	2-BP1, sheet 6	Commercial Building	Low	Current commercial uses
BP1	253	2-BP1, sheet 6	Biotest Laboratories	Low	Hazardous waste generator
BP1	254	2-BP1, sheet 6	Undeveloped Land	Low	Past construction staging area
BP1	255	2-BP1, sheet 6	Northwest EMC	Medium	Closed spill site
BP1	256	2-BP1, sheet 6	Holiday	Medium	gasoline station, USTs, closed spill site

Segment	Parcel	Figure Number	Name	Rank	Rationale
BP1	257	2-BP1, sheets 6 & 8	Baxter Healthcare	Medium	ASTs, closed spill site, hazardous waste generator
BP1	258	2-BP1, sheet 6	Undeveloped Land	High	USTs, closed LUST, PBP site, VIC site, hazardous waste generator
BP1	259	2-BP1, sheets 7 & 9	Olympus Surgical Technologies America	Low	Hazardous waste generator
BP1	260	2-BP1, sheets 9, 11 & 12	Target Corporation	Medium	USTs, closed LUST, PBP site, hazardous waste generator
BP1	261	2-BP1, sheets 8, 9 & 11	Undeveloped Land	Low	Former farmstead
BP1	262	2-BP1, sheets 8 & 11	Undeveloped Land	Low	Past farmstead and commercial uses
BP1	263	2-BP1, sheets 8 & 11	Undeveloped Land	Medium	Former farmstead and greenhouse/nursery
BP1	264	2-BP1, sheet 11	Undeveloped Land	Medium	Former multi-building residence
BP1	265	2-BP1, sheet 10	Undeveloped Land	Low	Former residence
BP1	266	2-BP1, sheet 10	Undeveloped Land	Low	Former residence
BP1	267	2-BP1, sheet 10	Undeveloped Land	Low	Former residence
BP1	268	2-BP1, sheet 14	Three Rivers Park District Rush Creek Regional Trail	Low	Former farmstead
BP1	269	2-BP1, sheet 10	Grace Fellowship Church	Medium	AST
BP1	270	2-BP1, sheet 14	Undeveloped Land	Low	Former farmstead
BP1	271	2-BP1, sheets 13 & 14	Three Rivers Park District Rush Creek Regional Trail	Medium	Former farmstead

Appendix B

Parcel Summary Table – Low Potential for Contamination Sites

Segment	Parcel	Figure Number	Name	Rank	Rationale
M	4	2-M, sheet 2	Fulton Brewing	Low	Past and current commercial uses
M	18	2-M, sheet 2	Commercial Building	Low	Hazardous waste generator
M	19	2-M, sheet 2	Velocity Express	Low	Past and current commercial uses
M	28	2-M, sheet 4	Donal Fraser Early Childhood Family Development Center	Low	Past commercial uses, hazardous waste generator
M	33	2-M, sheet 4	Kingdom of Jehovah's Witnesses	Low	Past and current use as a church
M	36	2-M, sheet 6	Zion Baptist Church	Low	Past and current commercial use
M	37	2-M, sheet 6	La Crèche Early Childhood Center	Low	Past and current commercial uses including manufacturing
M	41	2-M, sheet 6	Baur Residence	Low	Hazardous waste generator
M	43	2-M, sheet 7	Moen Property	Low	Hazardous waste generator
GV	51	2-GV, sheet 2	The Family Partnership	Low	Past and current commercial use for offices
GV	52	2-GV, sheets 2 & 3	Runion Residence	Low	Identified on ERNS
GV	54	2-GV, sheet 4	Golden Valley Fire Station	Low	Current use as a fire station
R	62	2-R, sheet 3	Markeson Residence	Low	Non-generator of hazardous waste
R	63	2-R, sheet 4	Lee Square	Low	Past use as a school
R	65	2-R, sheet 4	Lee Park	Low	Past use as a school
R	67	2-R, sheet 5	Bridgeway Apartments	Low	Past commercial uses
R	71	2-R, sheets 5 & 6	Park	Low	Past and current use as park with swimming pool
R	73	2-R, sheet 6	P&D Mechanical Contractor	Low	Past and current commercial uses
R	77	2-R, sheet 6	Robin Hotel	Low	Past and current commercial use
R	79	2-R, sheet 6	Papa John's Pizza/Payday	Low	Past and current commercial uses (mainly retail)
R	80	2-R, sheet 6	Commercial Building	Low	Past and current commercial uses (mainly retail)
R	81	2-R, sheet 6	Lions Gym & Wellness Center	Low	Hazardous waste generator
R	82	2-R, sheet 6	Minnesota Dental Group	Low	Current commercial use, hazardous waste generator
R	83	2-R, sheet 6	Strait Stuff Screen Printing	Low	Hazardous waste generator
R	87	2-R, sheet 6	Hirshfields/Ace Hardware	Low	Past and current commercial use (retail hardware), hazardous waste generator
R	89	2-R, sheet 6	Home Options	Low	Past and current commercial uses
R	91	2-R, sheet 6	Parking Lot	Low	Past commercial uses (retail and restaurants)
R	92	2-R, sheet 6	Outdoor Patio	Low	Past commercial uses
R	93	2-R, sheet 6	Commercial Building	Low	Hazardous waste generator
R	94	2-R, sheet 6	Canton Garden Restaurant	Low	Past and current commercial uses
R	95	2-R, sheet 6	McDonalds	Low	Past commercial uses including a car wash
R	97	2-R, sheet 6	Golden Age Design	Low	Hazardous waste generator
R	98	2-R, sheet 6	Parking Lot	Low	Past commercial uses
R	99	2-R, sheet 6	Hackenmueller's Meat Market	Low	Past and current commercial uses
R	100	2-R, sheet 6	Commercial Building	Low	Past and current commercial uses
R	103	2-R, sheet 6	Commercial Building	Low	Past and current commercial uses
R	104	2-R, sheet 6	EMI Audio	Low	Past and current commercial uses
R	108	2-R, sheet 6	Robbinsdale Gallery of Art/ Historical Museum/Library	Low	Past and current commercial uses
R	112	2-R, sheet 6	Commercial Building	Low	Past and current commercial uses
R	113	2-R, sheet 6	Commercial Building	Low	Past and current commercial uses
R	114	2-R, sheet 6	Metro Building Companies	Low	Past and current commercial uses
R	115	2-R, sheet 6	Sawhorse Designers & Builders	Low	Past and current commercial uses
R	116	2-R, sheet 6	Chirocenter Robbinsdale Chiropractic	Low	Hazardous waste generator
R	117	2-R, sheet 6	A Gentle Dental Center	Low	Hazardous waste generator

Segment	Parcel	Figure Number	Name	Rank	Rationale
R	118	2-R, sheet 6	Redeemer Evangelical Lutheran Church	Low	Past and current use as a church
R	119	2-R, sheet 6	TCF Bank	Low	Past and current commercial use
R	120	2-R, sheet 6	Washburn & McReavy Robbinsdale Chapel	Low	Past and current use as a funeral center
R	121	2-R, sheet 6	Robbinsdale Masonic Center	Low	Past and current commercial use
R	122	2-R, sheet 8	Osterhus Bibles, Books & Gifts	Low	Hazardous waste generator
C	127	2-C, sheet 1	Commercial Building	Low	Hazardous waste generator
C	128	2-C, sheet 1	Steve O's Bar & Grill	Low	Past and current commercial use
C	130	2-C, sheets 1 & 2	Crystal Wine & Spirits	Low	Past and current commercial use
C	131	2-C, sheets 1 & 2	O'Reilly Auto Parts	Low	Hazardous waste generator
C	132	2-C, sheet 2	Crystal Public Works Facility	Low	Hazardous waste generator
C	133	2-C, sheet 2	Doyle's Bowling & Lounge	Low	Hazardous waste generator
C	135	2-C, sheet 2	Washburn-McReavy Funeral Chapel	Low	Hazardous waste generator
C	137	2-C, sheet 2	Tim's Tree Service	Low	Past and current commercial use
C	145	2-C, sheets 2 & 3	Vacant Parcel	Low	Historical ground disturbance areas
C	146	2-C, sheets 2 & 3	The Phone Guys/S&S Communications	Low	Past and current commercial uses
C	154	2-C, sheet 3	CBF by Pierre	Low	Air permit site
C	164	2-C, sheet 3	Max It Pawn Shop	Low	Past and current commercial uses
C	175	2-C, sheet 4	Multi-Tenant Commercial Buildings	Low	Past and current commercial (mainly retail) uses
C	177	2-C, sheet 4	Retail Stores	Low	Past and current commercial uses
C	178	2-C, sheet 4	Cities Auto	Low	Current commercial uses
C	180	2-C, sheets 4 & 5	Undeveloped Land	Low	Past commercial uses
C	182	2-C, sheet 5	Moy Residence	Low	Hazardous waste generator
C	183	2-C, sheets 5 & 6	North Star Inn & Suites	Low	Past and current commercial uses
C	184	2-C, sheet 6	Rostamo's Bar	Low	Past and current commercial (restaurant and bar) uses
C	186	2-C, sheet 6	Premier Motors	Low	Past and current commercial uses
BP2	188	2-BP2, sheet 1	Minneapolis LU539 Pipefitters	Low	Hazardous waste generator
BP2	200	2-BP2, sheet 3	OMCM Marketing Solutions	Low	Current commercial use
BP2	203	2-BP2, sheet 4	Lights on Broadway	Low	Past and current commercial uses
BP2	204	2-BP2, sheet 4	Wagner's Drive In	Low	Past and current commercial uses
BP2	206	2-BP2, sheet 4	All American Recreation	Low	Past and current commercial uses
BP2	213	2-BP2, sheet 5	Prince of Peace Lutheran Church	Low	Past residential and commercial uses
BP2	215	2-BP2, sheet 5	Mayer Electric	Low	Past and current commercial uses
BP2	216	2-BP2, sheet 5	Lots Survey Company	Low	Past and current commercial uses
BP2	217	2-BP2, sheet 5	Distinguished Landscape	Low	Past and current commercial uses
BP2	218	2-BP2, sheet 5	Brooklyn Park West Fire Station	Low	Current commercial uses
BP2	221	2-BP2, sheets 5 & 6	Public Storage	Low	Current commercial uses
BP2	222	2-BP2, sheet 6	Sisaket Plaza	Low	Past and current commercial uses
BP2	223	2-BP2, sheet 6	Broadway Party & Tent Rental	Low	Past and current commercial uses
BP2	224	2-BP2, sheet 6	Magic Carpets Flooring Center	Low	Past and current commercial uses
BP2	225	2-BP2, sheet 6	Target	Low	Current commercial use, hazardous waste generator
BP2	226	2-BP2, sheet 6	Funk Animal Hospital	Low	Hazardous waste generator
BP2	227	2-BP2, sheets 6 & 7	Cub Foods	Low	Past and current commercial uses, hazardous waste generator
BP2	228	2-BP2, sheet 6	US Bank	Low	Current commercial uses

Segment	Parcel	Figure Number	Name	Rank	Rationale
BP2	229	2-BP2, sheets 6 & 7	McDonalds	Low	Current commercial uses
BP2	232	2-BP2, sheet 7	Wells Fargo Bank	Low	Past and current commercial uses, hazardous waste generator
BP2	234	2-BP2, sheet 7	Baker's Square	Low	Current commercial uses
BP2	235	2-BP2, sheet 7	Arby's	Low	Current commercial uses
BP2	236	2-BP2, sheet 7	CVS Pharmacy 4597	Low	Hazardous waste generator
BP2	238	2-BP2, sheet 8	Brooklyn Park Evangelical Free Church	Low	Past residential and agricultural use, current church use
BP1	244	2-BP1, sheet 3	Hennepin County Library	Low	Soil disturbance
BP1	245	2-BP1, sheet 4	Berean Baptist Church	Low	Church and residential uses
BP1	246	2-BP1, sheets 4 & 5	Commercial Building	Low	Hazardous waste generator, on-site generator
BP1	247	2-BP1, sheet 5	Commercial Building	Low	Hazardous waste generator
BP1	248	2-BP1, sheet 5	Crosstown North Business Center	Low	Current commercial uses
BP1	249	2-BP1, sheet 5	Commercial Building	Low	Past and current unknown uses of parcel
BP1	250	2-BP1, sheet 5	Crosstown North Business Center	Low	Hazardous waste generator
BP1	251	2-BP1, sheet 7	Liberty Carton and Star Exhibits	Low	Hazardous waste generator
BP1	252	2-BP1, sheet 6	Commercial Building	Low	Current commercial uses
BP1	253	2-BP1, sheet 6	Biotest Laboratories	Low	Hazardous waste generator
BP1	254	2-BP1, sheet 6	Undeveloped Land	Low	Past construction staging area
BP1	259	2-BP1, sheets 7 & 9	Olympus Surgical Technologies America	Low	Hazardous waste generator
BP1	261	2-BP1, sheets 8, 9 & 11	Undeveloped Land	Low	Former farmstead
BP1	262	2-BP1, sheets 8 & 11	Undeveloped Land	Low	Past farmstead and commercial uses
BP1	265	2-BP1, sheet 10	Undeveloped Land	Low	Former residence
BP1	266	2-BP1, sheet 10	Undeveloped Land	Low	Former residence
BP1	267	2-BP1, sheet 10	Undeveloped Land	Low	Former residence
BP1	268	2-BP1, sheet 14	Three Rivers Park District Rush Creek Regional Trail	Low	Former farmstead
BP1	270	2-BP1, sheet 14	Undeveloped Land	Low	Former farmstead

Appendix C

Parcel Summary Table – Medium Potential for Contamination Sites

Segment	Parcel	Figure Number	Name	Rank	Rationale
M	6	2-M, sheets 1 & 2	Holiday Gasoline Station/Convenience Store	Medium	Past and current auto repair and filling station, USTs, closed LUST, closed spill, hazardous waste generator
M	9	2-M, sheet 1	Mary My Hope Children's Center	Medium	Past commercial uses including auto repair activities
M	10	2-M, sheets 1 & 2	Metro Transit Garage and Offices	Medium	Past and current auto repair activities, ASTs, USTs, closed LUST, closed spill, hazardous waste generator
M	11	2-M, sheet 1	City of Minneapolis Department of Public Works Royalston Maintenance Facility	Medium	Past coal yard, ASTs, USTs, closed LUST, hazardous waste generator
M	13	2-M, sheet 1	Commercial Buildings	Medium	USTs, closed LUST, hazardous waste generator
M	14	2-M, sheet 2	Wells Fargo Bank	Medium	Storage tanks, hazardous waste generator
M	15	2-M, sheet 1	Commercial Building	Medium	ASTs, hazardous waste generator
M	16	2-M, sheet 1	G&K Services	Medium	ASTs, USTs, closed LUST, closed spill site, hazardous waste generator
M	20	2-M, sheet 3	Heritage Park	Medium	Former filling station
M	22	2-M, sheet 3	Apartment Building	Medium	AST, USTs
M	23	2-M, sheet 3	Commercial Buildings	Medium	Past filling station, USTs, hazardous waste generator
M	24	2-M, sheet 3	Commercial Building	Medium	Past dry cleaner, automotive service training school, hazardous waste generator
M	25	2-M, sheet 4	Hennepin County Sumner Library	Medium	Closed LUST site
M	26	2-M, sheet 3	Undeveloped Parcel	Medium	Past filling station, closed spill site, hazardous waste generator
M	27	2-M, sheet 4	Harvest Preparatory School and A.M.W. Church	Medium	Past commercial uses including filling stations
M	29	2-M, sheet 3	Olson Townhomes	Medium	Closed spill site
M	30	2-M, sheet 3	Park Plaza Apartments II	Medium	UST and closed LUST
M	31	2-M, sheet 4	Seed Academy/Harvest Prep School	Medium	Past and current commercial uses including auto repair, closed LUST
M	32	2-M, sheet 3	Park Plaza Apartments	Medium	Past commercial uses including a filling station, UST, closed LUST
M	34	2-M, sheet 4	Residential Duplex	Medium	Past filling station
M	35	2-M, sheet 5	Harrison Park	Medium	Past commercial uses including filling stations
M	38	2-M, sheet 5	Bruns Residence	Medium	Closed spill site, closed LUST
M	39	2-M, sheet 5	Tompkins Residence	Medium	Closed spill site
M	40	2-M, sheet 5	Skoug Residence	Medium	Closed spill site
M	42	2-M, sheet 6	Hoang Residence	Medium	Closed spill site
M	44	2-M, sheets 7 & 8	Former Railroad Area	Medium	Former commercial buildings and railroad tracks
M	45	2-M, sheet 7	Railroad Right of Way	Medium	Past and current railroad use
M	46	2-M, sheets 7-8	Theodore Wirth Park Golf Course	Medium	Past and current use as golf course, ASTs, USTs, closed LUST, closed MDA spill, hazardous waste generator
GV	48	2-GV, sheets 1-5	Railroad Right of Way	Medium	Past and current railroad use
GV	49	2-GV, sheet 1	Wilson Residence	Medium	Closed spill site
GV	50	2-GV, Sheet 2	Krawczyk Residence	Medium	Closed spill site
GV	53	2-GV, sheet 4	St. Margaret Mary Catholic Church	Medium	Past and current use as a church, USTs, and ground disturbance and fill of unknown origin
GV	55	2-GV, sheets 4 and 5	Mary Hills Nature Area	Medium	Possible past dumping or fill activities
GV	56	2-GV, Sheet 5	Single Family Residences	Medium	Closed spill site
R	57	2-R, sheets 1-8	Railroad Right of Way	Medium	Past and current railroad use
R	60	2-R, sheet 3	Bratsch Residence	Medium	Closed spill site
R	61	2-R, sheet 3	Xcel Energy Indiana Substation	Medium	Current use as an electric substation
R	64	2-R, sheet 4	Gray Residence	Medium	Closed spill site

Segment	Parcel	Figure Number	Name	Rank	Rationale
R	66	2-R, sheets 4 & 5	Windsor Court	Medium	USTs, closed LUST
R	68	2-R, sheet 5	Undeveloped Land	Medium	Past bus garage, USTs, hazardous waste generator
R	69	2-R, sheet 5	Beard Residence	Medium	Closed spill site
R	70	2-R, sheet 5	Kasprick Residence	Medium	Closed spill site
R	72	2-R, sheet 6	Sacred Heart Catholic Church & School	Medium	USTs, hazardous waste generator
R	74	2-R, sheet 6	Parking Lot	Medium	Past commercial uses, closed LUST
R	78	2-R, sheet 6	Robbinsdale Police and Fire Department and Water Filtration Plant #1	Medium	Hazardous waste generator, closed spill site
R	84	2-R, sheet 6	Pawn America	Medium	Past commercial uses including filling station, USTs
R	85	2-R, sheet 6	Chestnut Café	Medium	Past and current commercial uses including dry cleaning
R	86	2-R, sheet 6	Robbinsdale Marine	Medium	Past and current commercial use as boat sales and service, hazardous waste generator
R	96	2-R, sheet 6	Retail Commercial Building	Medium	Past and current commercial uses (mainly retail), closed LUST
R	101	2-R, sheet 6	Northside Oriental	Medium	Past auto repair activities, closed spill site
R	102	2-R, sheet 6	Nonna Rosa's	Medium	Past commercial use include dry cleaner, USTs
R	105	2-R, sheet 6	Commercial Building	Medium	Past and current commercial uses, UST
R	106	2-R, sheet 6	Tailor Shop	Medium	Past cleaners
R	109	2-R, sheet 6	Pilgrim Cleaners	Medium	Past commercial uses including gasoline station, current dry cleaner, USTs, closed LUST, hazardous waste generator
R	110	2-R, sheet 6	Sipe's Shell	Medium	Past and current use as a gasoline station, UST, closed LUST, spill site, hazardous waste generator
R	111	2-R, sheet 6	BP Gas Station	Medium	Past and current use as a gasoline station, USTs, closed LUST, spill site, hazardous waste generator
R	123	2-R, sheet 8	City of Robbinsdale Municipal Shop	Medium	AST, UST, closed LUST, hazardous waste generator
C	124	2-C, sheets 1-6	Railroad Right of Way	Medium	Past and current railroad use
C	125	2-C, sheet 1	Century Link	Medium	ASTs, USTs, closed LUST, hazardous waste generator.
C	126	2-C, sheet 1	Blind Installation & Repair	Medium	USTs, closed LUST
C	129	2-C, sheet 1	Full Proof Ministry and Thomas Tool & Supply	Medium	Closed spill site
C	134	2-C, sheet 2	Fun Services	Medium	Past commercial uses including a machine shop, hazardous waste generator
C	136	2-C, sheet 2	Stormwater pond	Medium	Former auto repair activities, closed spill site
C	138	2-C, sheet 2	Crystal Collision Center and Car Wash	Medium	Auto repair activities, hazardous waste generator
C	139	2-C, sheet 2	Kilmer Electric	Medium	Auto repair activities, AST, UST, hazardous waste generator
C	140	2-C, sheet 2	Auto Plus Auto Parts	Medium	Automotive machine shop and other possible auto repair activities, hazardous waste generator
C	141	2-C, sheet 2	Midwest Motor Craft	Medium	Auto repair activities, hazardous waste generator
C	142	2-C, sheet 2	North Suburban Towing and Thomas Auto Body & Collision	Medium	Auto repair activities, ASTs, hazardous waste generator
C	143	2-C, sheet 3	Bill's Economy Glass	Medium	Past and current commercial uses including machine shop and manufacturing, hazardous waste generator

Segment	Parcel	Figure Number	Name	Rank	Rationale
C	144	2-C, sheet 3	Multi-Tenant Commercial Building	Medium	Auto repair activities, hazardous waste generator
C	147	2-C, sheets 2 & 3	Golden Valley Heating & Air	Medium	Past and current commercial uses including manufacturing
C	148	2-C, sheet 3	BGD Companies	Medium	Past use as foundry, hazardous waste generator
C	149	2-C, sheet 3	Vacant Parcel	Medium	Past foundry and auto repair activities, closed spill site, hazardous waste generator
C	150	2-C, sheet 3	All American Storage	Medium	Past and current commercial uses including machine shops and manufacturing, hazardous waste generator
C	151	2-C, sheet 3	Collision Masters	Medium	Auto repair activities, past use as a tool manufacturer, hazardous waste generator
C	152	2-C, sheet 3	Standard Water Control Systems	Medium	Metal fabrication operations, hazardous waste generator
C	153	2-C, sheet 3	Skip's Auto Repair	Medium	Auto repair activities, AST, hazardous waste generator
C	155	2-C, sheet 3	Miller Diversified Machining	Medium	Auto repair activities, closed spill site, hazardous waste generator
C	156	2-C, sheet 3	Creative Partnership/Rise	Medium	UST, close LUST, close spill site
C	157	2-C, sheet 3	Curbside Waste	Medium	ASTs, USTs, waste services, hazardous waste generator.
C	158	2-C, sheet 3	Industrial Stainless Supply Inc.	Medium	Machine shop and manufacturing, potential dump or fill site, hazardous waste generator
C	159	2-C, sheet 3	Beaver Machine	Medium	Potential dump or fill site, machine shop use, hazardous waste generator
C	160	2-C, sheet 3	Holiday	Medium	Gasoline station, USTs, closed LUST
C	161	2-C, sheet 3	Car Hop	Medium	Former gasoline station
C	163	2-C, sheets 3 & 4	Crystal Business Commons	Medium	Automotive, AST, hazardous waste generator
C	165	2-C, sheet 3	Steen Engineering and Douglas Storage	Medium	Past commercial uses including repair activities and past outdoor storage of unknown materials
C	166	2-C, sheet 3	U-Haul Center	Medium	USTs, hazardous waste generator
C	167	2-C, sheets 3 & 4	Cedarwood Apartments	Medium	Past commercial uses including repair facility
C	168	2-C, sheets 3 & 4	The Schrader Building	Medium	Past and current commercial uses including auto sales and outdoor storage
C	169	2-C, sheet 4	Undeveloped Land	Medium	former gasoline station, UST, closed LUST
C	170	2-C, sheet 4	Becker Park and Crystal Arts and Activity Center	Medium	Former gasoline station
C	171	2-C, sheet 4	Undeveloped Land	Medium	AST, hazardous waste generator
C	173	2-C, sheet 4	Bass Lake Center	Medium	Closed spill site, hazardous waste generator
C	174	2-C, sheet 4	Undeveloped Land	Medium	Gasoline station, USTs, closed LUST, hazardous waste generator
C	176	2-C, sheet 4	Parking Lot	Medium	Former gasoline station
C	179	2-C, sheet 4	Crystal Medical Center	Medium	AST, hazardous waste generator
C	181	2-C, sheets 5 & 6	Crystal Airport	Medium	ASTs, USTs, closed LUST, closed spill site, hazardous waste generator
C	185	2-C, sheet 6	Jack's Auto Sales	Medium	Auto repair activities, hazardous waste generator
BP2	187	2-BP2, sheets 1-6	Railroad Right of Way	Medium	Past and current railroad use
BP2	189	2-BP2, sheet 1	The Waterford	Medium	USTs, closed LUSTs
BP2	191	2-BP2, sheet 1	Multi-Tenant Commercial Building	Medium	Closed spill site, hazardous waste generator
BP2	193	2-BP2, sheet 1	Stormwater Pond and Undeveloped Land	Medium	USTs, hazardous waste generator
BP2	194	2-BP2, sheet 2	The Groves Apartments	Medium	Closed spill site
BP2	197	2-BP2, sheet 2	TN Transportation and Automotive	Medium	Auto repair facilities, ASTs, USTs, closed LUST, hazardous waste generator
BP2	198	2-BP2, sheet 2	Nguyen Residence	Medium	Closed AgSpill

Segment	Parcel	Figure Number	Name	Rank	Rationale
BP2	199	2-BP2, sheets 2 & 3	O'Reilly Auto Parts	Medium	ASTs, USTs, closed LUST, closed spill site, hazardous waste generator
BP2	201	2-BP2, sheet 4	Broadway Rentals	Medium	USTs, ASTs, closed LUST, hazardous waste generator
BP2	202	2-BP2, sheet 4	Carmax	Medium	USTs, ASTs, closed LUST, hazardous waste generator
BP2	205		Interstate North Business Center	Medium	USTs, closed LUST, hazardous waste generator
BP2	207	2-BP2, sheet 4	U-Haul	Medium	Former gasoline station, USTs, closed LUST, hazardous waste generator
BP2	208	2-BP2, sheet 4	Wendy's	Medium	Former gasoline station, USTs, closed LUST, hazardous waste generator
BP2	209	2-BP2, sheets 4 & 5	Americold Distribution	Medium	Closed spill site, hazardous waste generator
BP2	210	2-BP2, sheet 5	Mister Carwash	Medium	Former gasoline station, USTs, closed LUST, hazardous waste generator
BP2	211	2-BP2, sheet 5	Consignment Central	Medium	Former motorcycle sales and service, closed spill site
BP2	212	2-BP2, sheet 5	North American Gear & Forge	Medium	Past and current commercial uses including machine shop, hazardous waste generator
BP2	214	2-BP2, sheet 5	Penske	Medium	UST, AST, closed spill site, hazardous waste generator
BP2	219	2-BP2, sheet 5	American Furniture Market	Medium	Inactive PBP site
BP2	220	2-BP2, sheet 5	Modern Dental Studio	Medium	Former filling/service station
BP2	230	2-BP2, sheet 7	Buerkle Acura	Medium	ASTs, USTs, hazardous waste generator.
BP2	231	2-BP2, sheet 7	Popeye's	Medium	Closed spill site
BP2	233	2-BP2, sheet 7	Northwind Plaza	Medium	Former dry cleaner
BP2	237	2-BP2, sheet 7	Park Square	Medium	UST, hazardous waste generator, past use as a possible dry cleaners
BP2	239	2-BP2, sheet 8	Residential Dwelling	Medium	Closed spill site
BP2	240	2-BP2, sheet 8	Prusinowski Residence	Medium	Closed spill site
BP1	241	2-BP1, sheets 1 & 2	North Hennepin Community College	Medium	ASTs, USTs, closed LUST, hazardous waste generator
BP1	242	2-BP1, sheet 2	Ronning Residence	Medium	Closed spill site
BP1	243	2-BP1, sheet 2	Broadway Square	Medium	Former gasoline station and drycleaner, USTs, closed LUST, closed spill, hazardous waste generator
BP1	255	2-BP1, sheet 6	Northwest EMC	Medium	Closed spill site
BP1	256	2-BP1, sheet 6	Holiday	Medium	gasoline station, USTs, closed spill site
BP1	257	2-BP1, sheets 6 & 8	Baxter Healthcare	Medium	ASTs, closed spill site, hazardous waste generator
BP1	260	2-BP1, sheets 9, 11 & 12	Target Corporation	Medium	USTs, closed LUST, PBP site, hazardous waste generator
BP1	263	2-BP1, sheets 8 & 11	Undeveloped Land	Medium	Former farmstead and greenhouse/nursery
BP1	264	2-BP1, sheet 11	Undeveloped Land	Medium	Former multi-building residence
BP1	269	2-BP1, sheet 10	Grace Fellowship Church	Medium	AST
BP1	271	2-BP1, sheets 13 & 14	Three Rivers Park District Rush Creek Regional Trail	Medium	Former farmstead

Appendix D

Parcel Summary Table – High Potential for Contamination Sites

Segment	Parcel	Figure Number	Name	Rank	Rationale
M	1	2-M, sheet 1	Ford Center	High	ASTs, closed LUST, closed spill, inactive VIC, hazardous waste generator
M	2	2-M, sheets 1 & 2	Be The Match	High	AST, closed LUST, closed spill, active VIC, active PBF, hazardous waste generator
M	3	2-M, sheet 1	Hennepin County Energy Recovery Center and Caribou Coffee	High	Past filling stations and auto repair facilities, ASTs, USTs, closed LUST, closed spill, inactive VIC, inactive PBP, inactive CERCLIS, hazardous waste generator
M	5	2-M, sheet 2	Parcel Under Construction	High	ASTs, USTs, closed LUST, active VIC, active PBP, hazardous waste generator
M	7	2-M, sheet 2	Weather Rite	High	Past and commercial uses including machine shop, metal manufacturing, waste (garbage) management, and automotive repair and junkyard, USTs, closed LUST, inactive VIC, active SAS, hazardous waste generator
M	8	2-M, sheet 2	Junction Flats	High	Past auto repair and junkyard, ASTs, USTs, active VIC, inactive PBP, active SR, hazardous waste generator
M	12	2-M, sheet 1	Sharing and Caring Hands	High	Past auto repair and filling stations, UST, closed LUST, inactive VIC, hazardous waste generator
M	17	2-M, sheet 2	Velocity Express	High	ASTs, USTs, closed LUST, closed spill site, active VIC, hazardous waste generator
M	21	2-M, sheet 4	Heritage Park II	High	Past commercial uses, USTs, closed LUST, closed spill, inactive VIC, hazardous waste generator
M	47	2-M, sheet 8	Undeveloped Parcels	High	Inactive VIC site
R	58	2-R, sheets 1-4	Walter Sochacki Community Park	High	Unpermitted dump site, active Sate Assessment site, closed spill site
R	59	2-R, sheet 2	South Halifax park	High	Inactive VIC site, inactive SRS site, restrictive covenant
R	75	2-R, sheet 6	Walgreens	High	Past commercial uses include filling station and auto repair facilities, ASTs, USTs, closed LUST, PBP site, inactive VIC site, hazardous waste generator
R	76	2-R, sheet 6	Broadway Court Apartments	High	Former gasoline station and dry cleaner, USTs, closed LUST, inactive VIC, inactive CERCLIS, inactive Superfund, hazardous waste generator
R	88	2-R, sheet 6	Wuollet Bakery & Espresso	High	Past and current commercial uses, former dry cleaner, inactive VIC site
R	90	2-R, sheet 6	Hubbard Market Place	High	Past auto repair activities, USTs, inactive VIC
R	107	2-R, sheet 6	The Steinhauser Group	High	Past dry cleaner, inactive VIC site
C	162	2-C, sheet 3	Commercial Building	High	USTs, closed spill site, active PBP site, hazardous waste generator, machine shops
C	172	2-C, sheet 4	Cell Tower and Undeveloped Land	High	Former gasoline station and auto repair, inactive VIC site, inactive PBP site, hazardous waste generator
BP2	190	2-BP2, sheet 1	Former Latzke Iron Works	High	Inactive VIC site
BP2	192	2-BP2, sheet 1	Waterford Senior Townhomes	High	ASTs, USTs, inactive VIC
BP2	195	2-BP2, sheet 2	Stormwater Pond	High	USTs, closed LUST, closed spill site, active PBP, active VIC, hazardous waste generator, exterminating company
BP2	196	2-BP2, sheet 2	Metro Transit Bottineau & 63rd Park & Ride	High	ASTs, USTs, closed LUST, closed PBP, inactive VIC, hazardous waste generator
BP1	258	2-BP1, sheet 6	Undeveloped Land	High	USTs, closed LUST, PBP site, VIC site, hazardous waste generator



The following appendices are not included in this version of the Modified Phase I ESA report due to volume.

They are available for viewing at the Blue Line Extension Project Office at 5514 West Broadway Ave, Suite 200, Crystal, MN 55428. Or, can be requested by contacting Robin Caufman at (651) 602-1457.

- Appendix E: Parcel Summaries
- Appendix F: Additional Parcel Summary Table (on CD)
- Appendix G: GeoSearch Regulatory Report (on CD)
- Appendix H: MPCA File Review Information (on CD)
- Appendix I: Aerial Photographs (on CD)
- Appendix J: Fire Insurance Maps (on CD)
- Appendix K: Topographic Maps (on CD)

Appendix L

Parcel Summary Table with PIN Information

Segment	Parcel	PIN	Site Name	Building Number	Street Name	City	Ranking
M	1	053-2202924420035	Ford Center	420	5TH ST N	MINNEAPOLIS	High
M	2	053-2202924240100	Be The Match	524	5TH ST N	MINNEAPOLIS	High
M	3	053-2202924310067	Hennepin County Energy Recovery Center and Caribou Coffee	505	6TH AVE N	MINNEAPOLIS	High
M	3	053-2202924310068	Hennepin County Energy Recovery Center and Caribou Coffee	435	5TH ST N	MINNEAPOLIS	High
M	4	053-2202924240027	Fulton Brewing	414	6TH AVE N	MINNEAPOLIS	Low
M	5	053-2202924240098	Parcel Under Construction	600	5TH ST N	MINNEAPOLIS	High
M	6	053-2202924240005	Holiday Gasoline Station/Convenience Store	601	5TH ST N	MINNEAPOLIS	Medium
M	6	053-2202924240008	Holiday Gasoline Station/Convenience Store	508	6TH AVE N	MINNEAPOLIS	Medium
M	7	053-2202924240031	Weather Rite	616	5TH ST N	MINNEAPOLIS	High
M	7	053-2202924240032	Weather Rite	620	5TH ST N	MINNEAPOLIS	High
M	8	053-2202924240099	Junction Flats	643	5TH ST N	MINNEAPOLIS	High
M	9	053-2202924310047	Mary My Hope Children's Center	425	7TH ST N	MINNEAPOLIS	Medium
M	9	053-2202924310050	Mary My Hope Children's Center	401	7TH ST N	MINNEAPOLIS	Medium
M	10	053-2202924230140	Metro Transit Garage and Offices	560	6TH AVE N	MINNEAPOLIS	Medium
M	11	053-2202924310036	City of Minneapolis Department of Public Works Royalston Maintenance Facility	661	5TH AVE N	MINNEAPOLIS	Medium
M	12	053-2202924310011	Sharing and Caring Hands	525	7TH ST N	MINNEAPOLIS	High
M	13	053-2202924320024	Commercial Buildings	415	ROYALSTON AVE N	MINNEAPOLIS	Medium
M	13	053-2202924320025	Commercial Buildings	501	ROYALSTON AVE N	MINNEAPOLIS	Medium
M	14	053-2202924230135	Wells Fargo Bank	615	7TH ST N	MINNEAPOLIS	Medium
M	15	053-2202924320004	Commercial Building	434	LAKESIDE AVE	MINNEAPOLIS	Medium
M	16	053-2202924320002	G&K Services	621	OLSON MEMORIAL HWY	MINNEAPOLIS	Medium
M	17	053-2202924230131	Velocity Express	620	OLSON MEMORIAL HWY	MINNEAPOLIS	High
M	18	053-2202924230033	Commercial Building	618	7TH AVE N	MINNEAPOLIS	Low
M	18	053-2202924230034	Commercial Building	701	7TH ST N	MINNEAPOLIS	Low
M	19	053-2202924230032	Velocity Express	622	7TH AVE N	MINNEAPOLIS	Low
M	19	053-2202924230143	Velocity Express	634	7TH AVE N	MINNEAPOLIS	Low
M	19	053-2202924230144	Velocity Express	638	7TH AVE N	MINNEAPOLIS	Low
M	20	053-2102924410034	Heritage Park	1004	5TH AVE N	MINNEAPOLIS	Medium
M	20	053-2102924410033	Heritage Park	851	OLSON MEMORIAL HWY	MINNEAPOLIS	Medium
M	21	053-2102924140069	Heritage Park II	652	BRYANT AVE N	MINNEAPOLIS	High
M	21	053-2102924130025	Heritage Park II	740	EMERSON AVE N	MINNEAPOLIS	High
M	21	053-2102924140068	Heritage Park II	651	BRYANT AVE N	MINNEAPOLIS	High
M	21	053-2102924140095	Heritage Park II	636	VAN WHITE MEM BLVD	MINNEAPOLIS	High
M	21	053-2102924140098	Heritage Park II	832	GERTRUDE BROWN PL	MINNEAPOLIS	High
M	21	053-2102924140099	Heritage Park II	710	BRYANT AVE N	MINNEAPOLIS	High
M	21	053-2102924140100	Heritage Park II	712	BRYANT AVE N	MINNEAPOLIS	High
M	21	053-2102924140101	Heritage Park II	714	BRYANT AVE N	MINNEAPOLIS	High
M	21	053-2102924140102	Heritage Park II	716	BRYANT AVE N	MINNEAPOLIS	High
M	22	053-2102924410032	Apartment Building	800	5TH AVE N	MINNEAPOLIS	Medium
M	23	053-2102924410022	Commercial Buildings	901	OLSON MEMORIAL HWY	MINNEAPOLIS	Medium
M	24	053-2102924410023	Commercial Building	921	OLSON MEMORIAL HWY	MINNEAPOLIS	Medium
M	24	053-2102924420022	Commercial Building	1101	OLSON MEMORIAL HWY	MINNEAPOLIS	Medium
M	25	053-2102924130014	Hennepin County Sumner Library	611	VAN WHITE MEM BLVD	MINNEAPOLIS	Medium
M	26	053-2102924420020	Undeveloped Parcel	501	GIRARD TER	MINNEAPOLIS	Medium
M	27	053-2102924130006	Harvest Preparatory School and Wayman A.M.W. Church	1200	OLSON MEMORIAL HWY	MINNEAPOLIS	Medium
M	27	053-2102924130010	Harvest Preparatory School and Wayman A.M.W. Church	1221	7TH AVE N	MINNEAPOLIS	Medium
M	28	053-2102924130004	Donald Fraser Early Childhood Family Development Center	700	HUMBOLDT AVE N	MINNEAPOLIS	Low

Segment	Parcel	PIN	Site Name	Building Number	Street Name	City	Ranking
M	29	053-2102924420021	Olson Townhomes	461	GIRARD TER	MINNEAPOLIS	Medium
M	30	053-2102924420009	Park Plaza Apartments II	1315	OLSON MEMORIAL HWY	MINNEAPOLIS	Medium
M	31	053-2102924130011	Seed Academy/Harvest Prep School	1300	OLSON MEMORIAL HWY	MINNEAPOLIS	Medium
M	31	053-2102924240131	Seed Academy/Harvest Prep School	609	HUMBOLDT AVE N	MINNEAPOLIS	Medium
M	32	053-2102924310003	Park Plaza Apartments	525	HUMBOLDT AVE N	MINNEAPOLIS	Medium
M	33	053-2102924240125	Kingdom of Jehovah's Witnesses	701	HUMBOLDT AVE N	MINNEAPOLIS	Low
M	34	053-2102924240200	Residential Duplex	613	ELWOOD AVE N	MINNEAPOLIS	Medium
M	35	053-2102924310085	Harrison Park	1518	5TH AVE N	MINNEAPOLIS	Medium
M	36	053-2102924240122	Zion Baptist Church	621	ELWOOD AVE N	MINNEAPOLIS	Low
M	37	053-2102924230252	La Creche Early Childhood Center	1800	OLSON MEMORIAL HWY	MINNEAPOLIS	Low
M	38	053-2102924320224	Bruns Residence	512	NEWTON AVE N	MINNEAPOLIS	Medium
M	39	053-2102924320019	Tompkins Residence	518	NEWTON AVE N	MINNEAPOLIS	Medium
M	40	053-2102924320027	Skoug Residence	527	NEWTON AVE N	MINNEAPOLIS	Medium
M	41	053-2102924230058	Baur Residence	624	OLIVER AVE N	MINNEAPOLIS	Low
M	42	053-2102924230060	Hoang Residence	706	OLIVER AVE N	MINNEAPOLIS	Medium
M	43	053-2002924410099	Moen Residence	507	SHERIDAN AVE N	MINNEAPOLIS	Low
M	44	053-2002924220006	Former Railroad Area	28	ADDRESS UNASSIGNED	GOLDEN VALLEY	Medium
M	44	053-2002924130045	Former Railroad Area	700	XERXES AVE N	MINNEAPOLIS	Medium
M	44	053-2002924130138	Former Railroad Area	600	XERXES AVE N	MINNEAPOLIS	Medium
M	45	053-2002924420003	Railroad Right of Way	300	UPTON AVE N	MINNEAPOLIS	Medium
M	45	053-2002924440072	Railroad Right of Way	2615	GLENWOOD AVE N	MINNEAPOLIS	Medium
M	45	053-2002924130002	Railroad Right of Way	2901	8TH AVE N	MINNEAPOLIS	Medium
M	46	053-1702924340006	Theodore Wirth Park Golf Course	28	ADDRESS UNASSIGNED	GOLDEN VALLEY	Medium
M	46	053-1702924310001	Theodore Wirth Park Golf Course	28	ADDRESS UNASSIGNED	GOLDEN VALLEY	Medium
M	46	053-1702924320001	Theodore Wirth Park Golf Course	28	ADDRESS UNASSIGNED	GOLDEN VALLEY	Medium
M	46	053-1702924330001	Theodore Wirth Park Golf Course	28	ADDRESS UNASSIGNED	GOLDEN VALLEY	Medium
M	46	053-1702924340008	Theodore Wirth Park Golf Course	28	ADDRESS UNASSIGNED	GOLDEN VALLEY	Medium
M	46	053-1702924230005	Theodore Wirth Park Golf Course	28	ADDRESS UNASSIGNED	GOLDEN VALLEY	Medium
M	46	053-1702924240002	Theodore Wirth Park Golf Course	28	ADDRESS UNASSIGNED	GOLDEN VALLEY	Medium
M	46	053-1702924240003	Theodore Wirth Park Golf Course	28	ADDRESS UNASSIGNED	GOLDEN VALLEY	Medium
M	46	053-2002924230002	Theodore Wirth Park Golf Course	28	ADDRESS UNASSIGNED	GOLDEN VALLEY	Medium
M	46	053-2002924330003	Theodore Wirth Park Golf Course	28	ADDRESS UNASSIGNED	GOLDEN VALLEY	Medium
M	46	053-2002924420010	Theodore Wirth Park Golf Course	2500	GLENWOOD AVE N	MINNEAPOLIS	Medium
M	47	053-2002924130041	Undeveloped Parcels	827	WASHBURN AVE N	MINNEAPOLIS	High
M	47	053-2002924130042	Undeveloped Parcels	821	WASHBURN AVE N	MINNEAPOLIS	High
M	47	053-2002924130043	Undeveloped Parcels	815	WASHBURN AVE N	MINNEAPOLIS	High
M	47	053-2002924130044	Undeveloped Parcels	801	WASHBURN AVE N	MINNEAPOLIS	High
M	47	053-2002924130122	Undeveloped Parcels	2901	OAK PARK AVE	MINNEAPOLIS	High
M	47	053-2002924130123	Undeveloped Parcels	2905	OAK PARK AVE	MINNEAPOLIS	High
M	47	053-2002924130124	Undeveloped Parcels	2909	OAK PARK AVE	MINNEAPOLIS	High
M	47	053-2002924130125	Undeveloped Parcels	2913	OAK PARK AVE	MINNEAPOLIS	High
M	47	053-2002924130126	Undeveloped Parcels	2917	OAK PARK AVE	MINNEAPOLIS	High
M	47	053-2002924130127	Undeveloped Parcels	2921	OAK PARK AVE	MINNEAPOLIS	High
M	47	053-2002924130128	Undeveloped Parcels	913	WASHBURN AVE N	MINNEAPOLIS	High
M	47	053-2002924130129	Undeveloped Parcels	909	WASHBURN AVE N	MINNEAPOLIS	High
M	47	053-2002924130130	Undeveloped Parcels	905	WASHBURN AVE N	MINNEAPOLIS	High
M	47	053-2002924130131	Undeveloped Parcels	901	WASHBURN AVE N	MINNEAPOLIS	High
M	48	053-1702924340010	Railroad Right of Way	28	ADDRESS UNASSIGNED	GOLDEN VALLEY	Medium
GV	48	053-2002924210004	Railroad Right of Way	28	ADDRESS UNASSIGNED	GOLDEN VALLEY	Medium
GV	48	053-1702924340009	Railroad Right of Way	28	ADDRESS UNASSIGNED	GOLDEN VALLEY	Medium
GV	48	053-1802924110008	Railroad Right of Way	28	ADDRESS UNASSIGNED	GOLDEN VALLEY	Medium
GV	49	053-2002924120116	Wilson Residence	1020	WASHBURN AVE N	MINNEAPOLIS	Medium
GV	50	053-2002924120128	Krawczyk Residence	1223	WASHBURN AVE N	MINNEAPOLIS	Medium

Segment	Parcel	PIN	Site Name	Building Number	Street Name	City	Ranking
GV	51	053-1702924340004	The Family Partnership	1501	XERXES AVE N	GOLDEN VALLEY	Low
GV	51	053-1702924340005	The Family Partnership	1501	XERXES AVE N	GOLDEN VALLEY	Low
GV	52	053-1702924430011	Runion Residence	1508	XERXES AVE N	MINNEAPOLIS	Low
GV	53	053-1702924240001	St Margaret Mary Catholic Church	2225	ZENITH AVE N	GOLDEN VALLEY	Medium
GV	53	053-1702924210002	St Margaret Mary Catholic Church	28	ADDRESS UNASSIGNED	GOLDEN VALLEY	Medium
GV	54	053-1702924230020	Golden Valley Fire Station #3	3700	GOLDEN VALLEY RD	GOLDEN VALLEY	Low
GV	55	053-1802924110050	Mary Hills Nature Area	28	ADDRESS UNASSIGNED	GOLDEN VALLEY	Medium
GV	55	053-1702924230004	Mary Hills Nature Area	28	ADDRESS UNASSIGNED	GOLDEN VALLEY	Medium
GV	56	053-1702924220057	Single-Family Residence	2537	MCNAIR DR	GOLDEN VALLEY	Medium
GV	56	053-1702924220076	Single-Family Residence	2500	BYRD AVE N	GOLDEN VALLEY	Medium
GV	56	053-1702924220077	Single-Family Residence	2508	BYRD AVE N	GOLDEN VALLEY	Medium
GV	56	053-1702924220078	Single-Family Residence	2520	BYRD AVE N	GOLDEN VALLEY	Medium
GV	56	053-1702924220079	Single-Family Residence	2528	BYRD AVE N	GOLDEN VALLEY	Medium
R	57	053-0702924110174	Railroad Right of Way	44	ADDRESS UNASSIGNED	ROBBINSDALE	Medium
R	57	053-1611821120026	Railroad Right of Way	44	ADDRESS UNASSIGNED	ROBBINSDALE	Medium
R	57	053-0602924210110	Railroad Right of Way	44	ADDRESS UNASSIGNED	ROBBINSDALE	Medium
R	57	053-0602924240141	Railroad Right of Way	44	ADDRESS UNASSIGNED	ROBBINSDALE	Medium
R	57	053-0911821430086	Railroad Right of Way	44	ADDRESS UNASSIGNED	ROBBINSDALE	Medium
R	58	053-0702924120184	Walter Sochacki Community Park	3449	JUNE AVE N	CRYSTAL	High
R	58	053-0702924120185	Walter Sochacki Community Park	3445	JUNE AVE N	CRYSTAL	High
R	58	053-0702924120186	Walter Sochacki Community Park	3441	JUNE AVE N	CRYSTAL	High
R	58	053-0702924120187	Walter Sochacki Community Park	3437	JUNE AVE N	CRYSTAL	High
R	58	053-0702924120014	Walter Sochacki Community Park	3501	JUNE AVE N	CRYSTAL	High
R	58	053-0702924120182	Walter Sochacki Community Park	3457	JUNE AVE N	CRYSTAL	High
R	58	053-0702924120183	Walter Sochacki Community Park	3453	JUNE AVE N	CRYSTAL	High
R	58	053-0702924110009	Walter Sochacki Community Park	3516	JUNE AVE N	ROBBINSDALE	High
R	58	053-0702924110186	Walter Sochacki Community Park	3500	JUNE AVE N	ROBBINSDALE	High
R	58	053-0702924410063	Walter Sochacki Community Park	3500	JUNE AVE N	ROBBINSDALE	High
R	59	053-0702924410046	South Halifax Park	44	ADDRESS UNASSIGNED	ROBBINSDALE	High
R	59	053-0702924410064	South Halifax Park	3101	HALIFAX AVE N	ROBBINSDALE	High
R	60	053-0702924140145	Bratsch Residence	3235	INDIANA AVE N	ROBBINSDALE	Medium
R	61	053-0702924140174	Xcel Energy Indiana Substation	3333	INDIANA AVE N	ROBBINSDALE	Medium
R	62	053-0702924140037	Markeson Residence	3308	INDIANA AVE N	ROBBINSDALE	Low
R	63	053-0602924430111	Lee Square	4400	36TH AVE N	ROBBINSDALE	Low
R	63	053-0602924430112	Lee Square	4400	36TH AVE N	ROBBINSDALE	Low
R	63	053-0602924430113	Lee Square	4400	36TH AVE N	ROBBINSDALE	Low
R	63	053-0602924430114	Lee Square	4400	36TH AVE N	ROBBINSDALE	Low
R	63	053-0602924430115	Lee Square	4400	36TH AVE N	ROBBINSDALE	Low
R	63	053-0602924430116	Lee Square	4400	36TH AVE N	ROBBINSDALE	Low
R	63	053-0602924430117	Lee Square	4400	36TH AVE N	ROBBINSDALE	Low
R	63	053-0602924430118	Lee Square	4400	36TH AVE N	ROBBINSDALE	Low
R	63	053-0602924430119	Lee Square	4400	36TH AVE N	ROBBINSDALE	Low
R	63	053-0602924430120	Lee Square	4400	36TH AVE N	ROBBINSDALE	Low
R	63	053-0602924430121	Lee Square	4400	36TH AVE N	ROBBINSDALE	Low
R	63	053-0602924430122	Lee Square	4400	36TH AVE N	ROBBINSDALE	Low
R	63	053-0602924430123	Lee Square	4400	36TH AVE N	ROBBINSDALE	Low
R	63	053-0602924430124	Lee Square	4400	36TH AVE N	ROBBINSDALE	Low
R	63	053-0602924430125	Lee Square	4400	36TH AVE N	ROBBINSDALE	Low
R	63	053-0602924430126	Lee Square	4400	36TH AVE N	ROBBINSDALE	Low

Segment	Parcel	PIN	Site Name	Building Number	Street Name	City	Ranking
R	63	053-0602924430199	Lee Square	4400	36TH AVE N	ROBBINSDALE	Low
R	63	053-0602924430200	Lee Square	4400	36TH AVE N	ROBBINSDALE	Low
R	63	053-0602924430201	Lee Square	4400	36TH AVE N	ROBBINSDALE	Low
R	63	053-0602924430202	Lee Square	4400	36TH AVE N	ROBBINSDALE	Low
R	63	053-0602924430203	Lee Square	4400	36TH AVE N	ROBBINSDALE	Low
R	63	053-0602924430204	Lee Square	4400	36TH AVE N	ROBBINSDALE	Low
R	63	053-0602924430205	Lee Square	4400	36TH AVE N	ROBBINSDALE	Low
R	63	053-0602924430206	Lee Square	4400	36TH AVE N	ROBBINSDALE	Low
R	63	053-0602924430207	Lee Square	4400	36TH AVE N	ROBBINSDALE	Low
R	63	053-0602924430208	Lee Square	4400	36TH AVE N	ROBBINSDALE	Low
R	63	053-0602924430209	Lee Square	4400	36TH AVE N	ROBBINSDALE	Low
R	63	053-0602924430210	Lee Square	4400	36TH AVE N	ROBBINSDALE	Low
R	63	053-0602924430211	Lee Square	4400	36TH AVE N	ROBBINSDALE	Low
R	63	053-0602924430212	Lee Square	4400	36TH AVE N	ROBBINSDALE	Low
R	63	053-0602924430213	Lee Square	4400	36TH AVE N	ROBBINSDALE	Low
R	63	053-0602924430214	Lee Square	4400	36TH AVE N	ROBBINSDALE	Low
R	63	053-0602924430215	Lee Square	4400	36TH AVE N	ROBBINSDALE	Low
R	63	053-0602924430216	Lee Square	4400	36TH AVE N	ROBBINSDALE	Low
R	63	053-0602924430217	Lee Square	4400	36TH AVE N	ROBBINSDALE	Low
R	63	053-0602924430218	Lee Square	4400	36TH AVE N	ROBBINSDALE	Low
R	63	053-0602924430219	Lee Square	4400	36TH AVE N	ROBBINSDALE	Low
R	63	053-0602924430220	Lee Square	4400	36TH AVE N	ROBBINSDALE	Low
R	63	053-0602924430221	Lee Square	4400	36TH AVE N	ROBBINSDALE	Low
R	63	053-0602924430222	Lee Square	4400	36TH AVE N	ROBBINSDALE	Low
R	63	053-0602924430223	Lee Square	4400	36TH AVE N	ROBBINSDALE	Low
R	63	053-0602924430224	Lee Square	4400	36TH AVE N	ROBBINSDALE	Low
R	63	053-0602924430225	Lee Square	4400	36TH AVE N	ROBBINSDALE	Low
R	63	053-0602924430226	Lee Square	4400	36TH AVE N	ROBBINSDALE	Low
R	63	053-0602924430227	Lee Square	4400	36TH AVE N	ROBBINSDALE	Low
R	63	053-0602924430228	Lee Square	4400	36TH AVE N	ROBBINSDALE	Low
R	63	053-0602924430229	Lee Square	4400	36TH AVE N	ROBBINSDALE	Low
R	63	053-0602924430230	Lee Square	4400	36TH AVE N	ROBBINSDALE	Low
R	63	053-0602924430231	Lee Square	4400	36TH AVE N	ROBBINSDALE	Low
R	63	053-0602924430232	Lee Square	4400	36TH AVE N	ROBBINSDALE	Low
R	63	053-0602924430233	Lee Square	4400	36TH AVE N	ROBBINSDALE	Low
R	64	053-0602924440111	Gray Residence	3618	INDIANA AVE N	ROBBINSDALE	Medium
R	65	053-0602924430109	Lee Park	3648	LEE AVE N	ROBBINSDALE	Low
R	66	053-0602924440013	Windsor Court	4024	37TH AVE N	ROBBINSDALE	Medium
R	66	053-0602924440014	Windsor Court	3737	HUBBARD AVE N	ROBBINSDALE	Medium
R	67	053-0602924440015	Bridgeway Apartments	3755	HUBBARD AVE N	ROBBINSDALE	Low
R	68	053-0602924430106	Undeveloped Land	3760	LEE AVE N	ROBBINSDALE	Medium
R	69	053-0602924420031	Beard Residence	3965	HUBBARD AVE N	ROBBINSDALE	Medium
R	70	053-0602924420040	Kasprick Residence	4029	HUBBARD AVE N	ROBBINSDALE	Medium
R	71	053-0602924240059	Park	4001	NOBLE AVE N	ROBBINSDALE	Low
R	72	053-0602924130031	Sacred Heart Catholic Church & School	4087	WEST BROADWAY	ROBBINSDALE	Medium
R	72	053-0602924130032	Sacred Heart Catholic Church & School	4099	HUBBARD AVE N	ROBBINSDALE	Medium
R	72	053-0602924130033	Sacred Heart Catholic Church & School	4095	HUBBARD AVE N	ROBBINSDALE	Medium
R	72	053-0602924130034	Sacred Heart Catholic Church & School	4089	HUBBARD AVE N	ROBBINSDALE	Medium
R	73	053-0602924130030	P&D Mechanical Contractor	4089	WEST BROADWAY	ROBBINSDALE	Low
R	74	053-0602924240133	Parking Lot	4125	RAILROAD AVE N	ROBBINSDALE	Medium
R	75	053-0602924130146	Walgreens	4100	WEST BROADWAY	ROBBINSDALE	High
R	76	053-0602924130139	Broadway Court Apartments	4600	41ST AVE N	ROBBINSDALE	High
R	77	053-0602924130029	Robin Hotel	4628	41ST AVE N	ROBBINSDALE	Low
R	78	053-0602924130009	Robbinsdale Police and Fire Department and Water Filtration Plant #1	4127	HUBBARD AVE N	ROBBINSDALE	Medium
R	78	053-0602924130010	Robbinsdale Police and Fire Department and Water Filtration Plant #1	4101	HUBBARD AVE N	ROBBINSDALE	Medium
R	78	053-0602924130011	Robbinsdale Police and Fire Department and Water Filtration Plant #1	4101	HUBBARD AVE N	ROBBINSDALE	Medium

Segment	Parcel	PIN	Site Name	Building Number	Street Name	City	Ranking
R	79	053-0602924130003	Papa John's Pizza/Payday	4121	LAKELAND AVE N	ROBBINSDALE	Low
R	80	053-0602924130147	Commercial Building	4124	WEST BROADWAY	ROBBINSDALE	Low
R	81	053-0602924130021	Lions Gym & Wellness Center	4123	WEST BROADWAY	ROBBINSDALE	Low
R	82	053-0602924130106	Minnesota Dental Group	4125	LAKELAND AVE N	ROBBINSDALE	Low
R	83	053-0602924130019	Strait Stuff Screen Printing	4129	WEST BROADWAY	ROBBINSDALE	Low
R	83	053-0602924130020	Strait Stuff Screen Printing	4127	WEST BROADWAY	ROBBINSDALE	Low
R	84	053-0602924130119	Pawn America	4132	WEST BROADWAY	ROBBINSDALE	Medium
R	85	053-0602924130017	Chestnut Café	4131	WEST BROADWAY	ROBBINSDALE	Medium
R	85	053-0602924130144	Chestnut Café	4135	WEST BROADWAY	ROBBINSDALE	Medium
R	86	053-0602924130101	Robbinsdale Marine	4139	LAKELAND AVE N	ROBBINSDALE	Medium
R	86	053-0602924130102	Robbinsdale Marine	4137	LAKELAND AVE N	ROBBINSDALE	Medium
R	87	053-0602924130109	Hirshfields/Ace Hardware	4140	WEST BROADWAY	ROBBINSDALE	Low
R	87	053-0602924130110	Hirshfields/Ace Hardware	4142	WEST BROADWAY	ROBBINSDALE	Low
R	88	053-0602924130111	Wuollet Bakery & Espresso	4609	41 1/2 AVE N	ROBBINSDALE	High
R	89	053-0602924130143	Home Options	4140	HUBBARD AVE N	ROBBINSDALE	Low
R	90	053-0602924240015	Hubbard Market Place	4139	HUBBARD AVE N	ROBBINSDALE	High
R	90	053-0602924240135	Hubbard Market Place	4145	HUBBARD AVE N	ROBBINSDALE	High
R	91	053-0602924120122	Parking lot	4611	42ND AVE N	ROBBINSDALE	Low
R	91	053-0602924130135	Parking lot	4165	LAKELAND AVE N	ROBBINSDALE	Low
R	91	053-0602924130138	Parking lot	4148	WEST BROADWAY	ROBBINSDALE	Low
R	91	053-0602924130141	Parking lot	4170	WEST BROADWAY	ROBBINSDALE	Low
R	92	053-0602924130014	Outdoor Patio	4151	WEST BROADWAY	ROBBINSDALE	Low
R	93	053-0602924240137	Commercial Building	4614	41 1/2 AVE N	ROBBINSDALE	Low
R	94	053-0602924130013	Canton Garden Restaurant	4153	WEST BROADWAY	ROBBINSDALE	Low
R	95	053-0602924120116	McDonalds	4601	LAKE DR	ROBBINSDALE	Low
R	96	053-0602924130137	Retail Commercial Building	4150	WEST BROADWAY	ROBBINSDALE	Medium
R	97	053-0602924240017	Golden Age Design	4157	WEST BROADWAY	ROBBINSDALE	Low
R	98	053-0602924240136	Parking Lot	4155	HUBBARD AVE N	ROBBINSDALE	Low
R	99	053-0602924240018	Hackenmueller's Meat Market	4159	WEST BROADWAY	ROBBINSDALE	Low
R	100	053-0602924240016	Commercial Building	4165	WEST BROADWAY	ROBBINSDALE	Low
R	101	053-0602924240012	Northside Oriental	4165	HUBBARD AVE N	ROBBINSDALE	Medium
R	101	053-0602924240013	Northside Oriental	4719	42ND AVE N	ROBBINSDALE	Medium
R	102	053-0602924130140	Nonna Rosa's	4168	WEST BROADWAY	ROBBINSDALE	Medium
R	102	053-0602924130142	Nonna Rosa's	4160	WEST BROADWAY	ROBBINSDALE	Medium
R	103	053-0602924240008	Commercial Building	4175	WEST BROADWAY	ROBBINSDALE	Low
R	104	053-0602924240010	EMI Audio	4719	42ND AVE N	ROBBINSDALE	Low
R	105	053-0602924120121	Commercial Building	4180	WEST BROADWAY	ROBBINSDALE	Medium
R	106	053-0602924240007	Tailor Shop	4179	WEST BROADWAY	ROBBINSDALE	Medium
R	107	053-0602924240140	The Steinhauser Group	4707	42ND AVE N	ROBBINSDALE	High
R	108	053-0602924240139	Robbinsdale Gallery of Art/Historical Museum/Library	4915	42ND AVE N	ROBBINSDALE	Low
R	109	053-0602924120032	Pilgrim Cleaners	4606	LAKE DR	ROBBINSDALE	Medium
R	110	053-0602924210113	Sipe's Shell	4200	WEST BROADWAY	ROBBINSDALE	Medium
R	111	053-0602924210036	BP Gas Station	4205	WEST BROADWAY	ROBBINSDALE	Medium
R	112	053-0602924210037	Commercial Building	4716	42ND AVE N	ROBBINSDALE	Low
R	113	053-0602924210038	Commercial Building	4718	42ND AVE N	ROBBINSDALE	Low
R	114	053-0602924210032	Metro Building Companies	44	ADDRESS UNASSIGNED	ROBBINSDALE	Low
R	114	053-0602924210114	Metro Building Companies	4738	42ND AVE N	ROBBINSDALE	Low
R	115	053-0602924210041	Sawhorse Designers & Builders	4740	42ND AVE N	ROBBINSDALE	Low
R	115	053-0602924210042	Sawhorse Designers & Builders	4740	42ND AVE N	ROBBINSDALE	Low
R	115	053-0602924210120	Sawhorse Designers & Builders	4750	42ND AVE N	ROBBINSDALE	Low
R	116	053-0602924210070	Chirocenter Robbinsdale Chiropractic	4926	42ND AVE N	ROBBINSDALE	Low

Segment	Parcel	PIN	Site Name	Building Number	Street Name	City	Ranking
R	117	053-0602924210069	A Gentle Dental Center	4930	42ND AVE N	ROBBINSDALE	Low
R	118	053-0602924220003	Redeemer Evangelical Lutheran Church	4201	REGENT AVE N	ROBBINSDALE	Low
R	118	053-0602924220002	Redeemer Evangelical Lutheran Church	4233	REGENT AVE N	ROBBINSDALE	Low
R	119	053-0602924210112	TCF Bank	4222	WEST BROADWAY	ROBBINSDALE	Low
R	120	053-0602924210118	Washburn & McReavy Robbinsdale Chapel	4239	WEST BROADWAY	ROBBINSDALE	Low
R	121	053-0602924210102	Robbinsdale Masonic Center	4228	WEST BROADWAY	ROBBINSDALE	Low
R	122	053-0911821430017	Osterhus Bibles, Books & Gifts	4500	WEST BROADWAY	ROBBINSDALE	Low
R	123	053-0911821430001	City of Robbinsdale Municipal Shop	4601	TOLEDO AVE N	ROBBINSDALE	Medium
C	124	053-0511821140069	Railroad Right of Way	54	ADDRESS UNASSIGNED	CRYSTAL	Medium
C	124	053-0911821240022	Railroad Right of Way	54	ADDRESS UNASSIGNED	CRYSTAL	Medium
C	124	053-0411821330035	Railroad Right of Way	54	ADDRESS UNASSIGNED	CRYSTAL	Medium
C	124	053-0911821310125	Railroad Right of Way	54	ADDRESS UNASSIGNED	CRYSTAL	Medium
R	125	053-0911821310009	Century Link	4700	WELCOME AVE N	CRYSTAL	Medium
R	126	053-0911821420066	Blind Installation & Repair	5421	LAKESIDE AVE N	CRYSTAL	Medium
R	127	053-0911821310027	Commercial Building	4801	WELCOME AVE N	CRYSTAL	Low
R	127	053-0911821310028	Commercial Building	4801	WELCOME AVE N	CRYSTAL	Low
R	128	053-0911821310007	Steve O's Bar & Grill	4900	WEST BROADWAY	CRYSTAL	Low
R	129	053-0911821310121	Full Proof Ministry and Thomas Tool & Supply	4835	WEST BROADWAY	CRYSTAL	Medium
C	130	053-0911821310006	Crystal Wine & Spirits	4920	WEST BROADWAY	CRYSTAL	Low
C	131	053-0911821310126	O'Reilly Auto Parts	4905	WEST BROADWAY	CRYSTAL	Low
C	132	053-0911821240066	Crystal Public Works Facility	5001	WEST BROADWAY	CRYSTAL	Low
C	133	053-0911821240057	Doyle's Bowling & Lounge	5000	WEST BROADWAY	CRYSTAL	Low
C	134	053-0911821240056	Fun Services	5617	CORVALLIS AVE N	CRYSTAL	Medium
C	135	053-0911821230005	Washburn-McReavy Funeral Chapel	5125	WEST BROADWAY	CRYSTAL	Low
C	136	053-0911821240025	Stormwater Pond	5101	LAKELAND AVE N	CRYSTAL	Medium
C	137	053-0911821240003	Tim's Tree Service	5612	CORVALLIS AVE N	CRYSTAL	Low
C	138	053-0911821240065	Crystal Collision Center and Car Wash	5108	WEST BROADWAY	CRYSTAL	Medium
C	139	053-0911821240001	Kilmer Electric	54	ADDRESS UNASSIGNED	CRYSTAL	Medium
C	139	053-0911821240002	Kilmer Electric	5141	LAKELAND AVE N	CRYSTAL	Medium
C	140	053-0911821240024	Auto Plus Auto Parts	5140	WEST BROADWAY	CRYSTAL	Medium
C	141	053-0911821240023	Midwest Motor Craft	5160	WEST BROADWAY	CRYSTAL	Medium
C	142	053-0911821220008	North Suburban Towing and Thomas Auto Body & Collision	5170	WEST BROADWAY	CRYSTAL	Medium
C	143	053-0911821210009	Bill's Economy Glass	5201	LAKELAND AVE N	CRYSTAL	Medium
C	144	053-0911821210010	Multi-Tenant Commercial Building	5221	LAKELAND AVE N	CRYSTAL	Medium
C	145	053-0911821220041	Vacant Parcel	5128	HANSON CT N	CRYSTAL	Low
C	146	053-0911821220040	The Phone Guys/S&S Communications	5124	HANSON CT N	CRYSTAL	Low
C	147	053-0911821220039	Golden Valley Heating & Air	5182	WEST BROADWAY	CRYSTAL	Medium
C	148	053-0911821210004	BGD Companies	5323	LAKELAND AVE N	CRYSTAL	Medium
C	149	053-0911821220021	Vacant Parcel	5208	HANSON CT N	CRYSTAL	Medium
C	150	053-0911821220046	All American Storage	5217	HANSON CT N	CRYSTAL	Medium
C	150	053-0911821220010	All American Storage	5225	HANSON CT N	CRYSTAL	Medium
C	151	053-0911821220028	Collision Masters	5115	HANSON CT N	CRYSTAL	Low
C	152	053-0911821210006	Standard Water Control Systems	5333	LAKELAND AVE N	CRYSTAL	Medium
C	153	053-0911821210060	Skip's Auto Repair	5343	LAKELAND AVE N	CRYSTAL	Medium
C	154	053-0911821220019	CBF by Pierre	5224	HANSON CT N	CRYSTAL	Low
C	155	053-0911821220009	Miller Diversified Machining	5241	HANSON CT N	CRYSTAL	Medium
C	156	053-0911821220056	Creative Partnership/Rise	5353	LAKELAND AVE N	CRYSTAL	Medium
C	157	053-0911821220017	Curbside Waste	5240	HANSON CT N	CRYSTAL	Medium
C	157	053-0911821220018	Curbside Waste	5232	HANSON CT N	CRYSTAL	Medium

Segment	Parcel	PIN	Site Name	Building Number	Street Name	City	Ranking
C	158	053-0911821220058	Industrial Stainless Supply Inc	5265	HANSON CT N	CRYSTAL	Medium
C	159	053-0911821220022	Beaver Machine	5273	HANSON CT N	CRYSTAL	Medium
C	160	053-0411821340061	Holiday	5402	LAKELAND AVE N	CRYSTAL	Medium
C	160	053-0411821340062	Holiday	5410	LAKELAND AVE N	CRYSTAL	Medium
C	160	053-0411821340063	Holiday	5410	LAKELAND AVE N	CRYSTAL	Medium
C	161	053-0411821330042	Car Hop	5417	LAKELAND AVE N	CRYSTAL	Medium
C	162	053-0411821330032	Commercial Building	5400	DOUGLAS DR N	CRYSTAL	High
C	162	053-0411821330022	Commercial Building	5431	LAKELAND AVE N	CRYSTAL	High
C	162	053-0411821330023	Commercial Building	5425	LAKELAND AVE N	CRYSTAL	High
C	163	053-0411821330043	Crystal Business Commons	5500	LAKELAND AVE N	CRYSTAL	Medium
C	164	053-0411821330004	Max It Pawn Shop	5445	LAKELAND AVE N	CRYSTAL	Low
C	165	053-0411821330039	Steen Engineering and Douglas Storage	5430	DOUGLAS DR N	CRYSTAL	Low
C	166	053-0411821330005	U-Haul Center	5465	LAKELAND AVE N	CRYSTAL	Medium
C	167	053-0411821330040	Cedarwoods Apartments	5450	DOUGLAS DR N	CRYSTAL	Medium
C	168	053-0411821330001	The Schrader Building	5501	LAKELAND AVE N	CRYSTAL	Medium
C	169	053-0411821330010	Undeveloped Land	5521	LAKELAND AVE N	CRYSTAL	Medium
C	170	053-0411821330041	Becker Park and Crystal Arts and Activity Center	6225	56TH AVE N	CRYSTAL	Medium
C	171	053-0411821330009	Undeveloped Land	5531	LAKELAND AVE N	CRYSTAL	Medium
C	172	053-0411821330006	Cell Tower and Undeveloped Land	5561	LAKELAND AVE N	CRYSTAL	High
C	172	053-0411821330007	Cell Tower and Undeveloped Land	5551	LAKELAND AVE N	CRYSTAL	High
C	173	053-0411821320112	Bass Lake Center	6000	56TH AVE N	CRYSTAL	Medium
C	174	053-0411821320109	Undeveloped Land	5602	LAKELAND AVE N	CRYSTAL	Medium
C	175	053-0411821320105	Multi-Tenant Commercial Buildings	6200	56TH AVE N	CRYSTAL	Low
C	175	053-0411821320106	Multi-Tenant Commercial Buildings	6230	56TH AVE N	CRYSTAL	Low
C	175	053-0411821320107	Multi-Tenant Commercial Buildings	6230	56TH AVE N	CRYSTAL	Low
C	176	053-0511821410108	Parking Lot	6306	56TH AVE N	CRYSTAL	Medium
C	177	053-0511821410106	Retail Stores	6320	56TH AVE N	CRYSTAL	Low
C	177	053-0511821410107	Retail Stores	6316	56TH AVE N	CRYSTAL	Low
C	178	053-0411821320103	Cities Auto	5630	LAKELAND AVE N	CRYSTAL	Low
C	179	053-0411821320113	Crystal Medical Center	5700	BOTTINEAU BLVD	CRYSTAL	Medium
C	180	053-0411821320025	Undeveloped Land	5736	LAKELAND AVE N	CRYSTAL	Low
C	181	053-0511821140001	Crystal Airport	54	ADDRESS UNASSIGNED	CRYSTAL	Medium
C	181	053-0411821130001	Crystal Airport	5800	CRYSTAL AIRPORT RD	CRYSTAL	Medium
C	182	053-0511821140040	Moy Residence	6519	DUDLEY AVE N	CRYSTAL	Low
C	183	053-0511821110098	North Star Inn & Suites	6000	LAKELAND AVE N	CRYSTAL	Low
C	184	053-0511821110096	Rostamo's Bar	6014	LAKELAND AVE N	CRYSTAL	Low
C	185	053-0511821110104	Jack's Auto Sales	6043	FLORIDA AVE N	CRYSTAL	Low
C	185	053-0511821110037	Jack's Auto Sales	6030	LAKELAND AVE N	CRYSTAL	Low
C	186	053-0511821110071	Premier Motors	6048	LAKELAND AVE N	CRYSTAL	Low
C	186	053-0511821110087	Premier Motors	6058	LAKELAND AVE N	CRYSTAL	Low
BP2	187	053-3211921210001	Railroad Right of Way	48	ADDRESS UNASSIGNED	BROOKLYN PARK	Medium
BP2	187	053-3211921240020	Railroad Right of Way	48	ADDRESS UNASSIGNED	BROOKLYN PARK	Medium
BP2	187	053-3211921420049	Railroad Right of Way	48	ADDRESS UNASSIGNED	BROOKLYN PARK	Medium
BP2	187	053-2911921230015	Railroad Right of Way	48	ADDRESS UNASSIGNED	BROOKLYN PARK	Medium
BP2	188	053-3211921440081	Minneapolis LU539 Pipefitters	6200	LAKELAND AVE N	BROOKLYN PARK	Low
BP2	189	053-3211921430015	The Waterford	7000	62ND AVE N	BROOKLYN PARK	Medium
BP2	190	053-3211921440077	Former Latzke Iron Works	6224	LAKELAND AVE N	BROOKLYN PARK	High
BP2	191	053-3211921430029	Multi-Tenant Commercial Building	6248	LAKELAND AVE N	BROOKLYN PARK	Medium
BP2	192	053-3211921430030	Waterford Senior Townhomes	6280	LOUISIANA CT N	BROOKLYN PARK	High
BP2	193	053-3211921430007	Stormwater Pond and Undeveloped Land	48	ADDRESS UNASSIGNED	BROOKLYN PARK	Medium
BP2	193	053-3211921430027	Stormwater Pond and Undeveloped Land	6280	LAKELAND AVE N	BROOKLYN PARK	Medium
BP2	193	053-3211921430028	Stormwater Pond and Undeveloped Land	6260	LAKELAND AVE N	BROOKLYN PARK	Medium

Segment	Parcel	PIN	Site Name	Building Number	Street Name	City	Ranking
BP2	193	053-3211921430001	Stormwater Pond and Undeveloped Land	6288	LAKELAND AVE N	BROOKLYN PARK	Medium
BP2	193	053-3211921430002	Stormwater Pond and Undeveloped Land	6725	63RD AVE N	BROOKLYN PARK	Medium
BP2	193	053-3211921430003	Stormwater Pond and Undeveloped Land	6721	63RD AVE N	BROOKLYN PARK	Medium
BP2	193	053-3211921430025	Stormwater Pond and Undeveloped Land	6701	63RD AVE N	BROOKLYN PARK	Medium
BP2	193	053-3211921430026	Stormwater Pond and Undeveloped Land	6705	63RD AVE N	BROOKLYN PARK	Medium
BP2	194	053-3211921420054	The Groves Apartments	6800	63RD AVE N	BROOKLYN PARK	Medium
BP2	195	053-3211921420002	Stormwater Pond	6300	LAKELAND AVE N	BROOKLYN PARK	High
BP2	195	053-3211921420003	Stormwater Pond	6308	LAKELAND AVE N	BROOKLYN PARK	High
BP2	195	053-3211921420006	Stormwater Pond	6332	LAKELAND AVE N	BROOKLYN PARK	High
BP2	195	053-3211921420053	Stormwater Pond	6324	LAKELAND AVE N	BROOKLYN PARK	High
BP2	196	053-3211921420012	Metro Transit Bottineau & 63rd Park & Ride	7000	63RD AVE N	BROOKLYN PARK	High
BP2	197	053-3211921420007	TN Transportation and Automotive	6400	LAKELAND AVE N	BROOKLYN PARK	Medium
BP2	198	053-3211921420009	Nguyen Residence	6416	LAKELAND AVE N	BROOKLYN PARK	Medium
BP2	199	053-3211921240024	O'Reilly Auto Parts	6600	WEST BROADWAY	BROOKLYN PARK	Medium
BP2	200	053-3211921210004	OMCM Marketing Solutions	6748	WEST BROADWAY	BROOKLYN PARK	Low
BP2	201	053-3211921210003	Broadway Rentals	6800	WEST BROADWAY	BROOKLYN PARK	Medium
BP2	202	053-2911921340004	Carmax	6900	LAKELAND AVE N	BROOKLYN PARK	Medium
BP2	203	053-3211921210002	Lights on Broadway	6900	WEST BROADWAY	BROOKLYN PARK	Low
BP2	204	053-2911921340005	Wagner's Drive In	7000	WEST BROADWAY	BROOKLYN PARK	Low
BP2	205	053-2911921330005	Interstate North Business Center	6965	WEST BROADWAY	BROOKLYN PARK	Medium
BP2	205	053-2911921330006	Interstate North Business Center	6973	WEST BROADWAY	BROOKLYN PARK	Medium
BP2	205	053-2911921330007	Interstate North Business Center	7040	WINNETKA AVE N	BROOKLYN PARK	Medium
BP2	205	053-2911921330008	Interstate North Business Center	7044	WINNETKA AVE N	BROOKLYN PARK	Medium
BP2	206	053-2911921340003	All American Recreation	6948	LAKELAND AVE N	BROOKLYN PARK	Low
BP2	207	053-2911921340051	U-Haul	7007	LAKELAND AVE N	BROOKLYN PARK	Medium
BP2	208	053-2911921340048	Wendy's	7445	71ST AVE N	BROOKLYN PARK	Medium
BP2	209	053-2911921320016	Americold Distribution	7130	WINNETKA AVE N	BROOKLYN PARK	Medium
BP2	210	053-2911921310290	Mister Carwash	7100	WEST BROADWAY	BROOKLYN PARK	Medium
BP2	211	053-2911921320019	Consignment Central	7111	WEST BROADWAY	BROOKLYN PARK	Medium
BP2	212	053-2911921320020	North American Gear & Forge	7204	WINNETKA AVE N	BROOKLYN PARK	Medium
BP2	213	053-2911921320003	Prince of Peace Lutheran Church	7517	73RD AVE N	BROOKLYN PARK	Low
BP2	213	053-2911921320022	Prince of Peace Lutheran Church	7217	WEST BROADWAY	BROOKLYN PARK	Low
BP2	214	053-2911921320021	Penske	7214	WINNETKA AVE N	BROOKLYN PARK	Medium
BP2	215	053-2911921320015	Mayer Electric	7224	WINNETKA AVE N	BROOKLYN PARK	Low
BP2	216	053-2911921320004	Lots Survey Company	7601	73RD AVE N	BROOKLYN PARK	Low
BP2	217	053-2911921320005	Distinguished Landscape	7609	73RD AVE N	BROOKLYN PARK	Low
BP2	218	053-2911921230019	Brooklyn Park West Fire Station	7301	WEST BROADWAY	BROOKLYN PARK	Low
BP2	219	053-2911921230009	American Furniture Market	7308	LAKELAND AVE N	BROOKLYN PARK	Medium
BP2	220	053-2911921230010	Modern Dental Studio	7300	LAKELAND AVE N	BROOKLYN PARK	Medium
BP2	221	053-3011921140006	Public Storage	7800	73RD AVE N	BROOKLYN PARK	Low
BP2	222	053-2911921230008	Sisaket Plaza	7316	LAKELAND AVE N	BROOKLYN PARK	Low
BP2	223	053-2911921230007	Broadway Party & Tent Rental	7409	JOLLY LA N	BROOKLYN PARK	Low
BP2	224	053-2911921230006	Magic Carpets Flooring Center	7400	LAKELAND AVE N	BROOKLYN PARK	Low
BP2	225	053-2911921220024	Target	7535	WEST BROADWAY	BROOKLYN PARK	Low
BP2	226	053-2911921230004	Funk Animal Hospital	7425	JOLLY LA N	BROOKLYN PARK	Low
BP2	227	053-2911921220023	Cub Foods	7555	WEST BROADWAY	BROOKLYN PARK	Low
BP2	228	053-2911921210106	US Bank	7600	WEST BROADWAY	BROOKLYN PARK	Low
BP2	229	053-2911921220022	McDonald's	7685	WEST BROADWAY	BROOKLYN PARK	Low

Segment	Parcel	PIN	Site Name	Building Number	Street Name	City	Ranking
BP2	230	053-2911921210096	Buerkle Acura	7925	BROOKLYN BLVD	BROOKLYN PARK	Medium
BP2	231	053-2911921220012	Popeye's	8025	BROOKLYN BLVD	BROOKLYN PARK	Medium
BP2	232	053-2911921220011	Wells Fargo Bank	8041	BROOKLYN BLVD	BROOKLYN PARK	Low
BP2	233	053-2011921340002	Northwind Plaza	7944	BROOKLYN BLVD	BROOKLYN PARK	Medium
BP2	233	053-2011921340079	Northwind Plaza	7944	BROOKLYN BLVD	BROOKLYN PARK	Medium
BP2	234	053-2011921330005	Baker's Square	8000	BROOKLYN BLVD	BROOKLYN PARK	Low
BP2	235	053-2011921330004	Arby's	8016	BROOKLYN BLVD	BROOKLYN PARK	Low
BP2	236	053-2011921340080	CVS Pharmacy 4597	7996	BROOKLYN BLVD	BROOKLYN PARK	Low
BP2	237	053-2011921330006	Park Square	8020	BROOKLYN BLVD	BROOKLYN PARK	Medium
BP2	238	053-2011921320010	Brooklyn Park Evangelical Free Church	7901	WEST BROADWAY	BROOKLYN PARK	Low
BP2	239	053-2011921310089	Residential Dwelling	7325	79TH AVE N	BROOKLYN PARK	Medium
BP1	240	053-2011921310005	Prusinowski Residence	7325	CANDLEWOOD DR N	BROOKLYN PARK	Medium
BP1	241	053-2011921210001	North Hennepin Community College	7411	85TH AVE N	BROOKLYN PARK	Medium
BP1	242	053-2011921220068	Ronning Residence	8441	RHODE ISLAND DR N	BROOKLYN PARK	Medium
BP1	243	053-2011921220096	Broadway Square	8401	WEST BROADWAY	BROOKLYN PARK	Medium
BP1	244	053-1711921340052	Hennepin County Library	8500	WEST BROADWAY	BROOKLYN PARK	Low
BP1	245	053-1711921320205	Berean Baptist Church	8825	WEST BROADWAY	BROOKLYN PARK	Low
BP1	246	053-1711921230011	Commercial Building	7601	SETZLER PKWY N	BROOKLYN PARK	Low
BP1	247	053-1711921230006	Commercial Building	7500	SETZLER PKWY N	BROOKLYN PARK	Low
BP1	248	053-1711921220012	Crosstown North Business Center	9100	WYOMING AVE N	BROOKLYN PARK	Low
BP1	249	053-1711921210081	Commercial Building	9200	WEST BROADWAY	BROOKLYN PARK	Low
BP1	250	053-1711921220010	Crosstown North Business Center	9201	WEST BROADWAY	BROOKLYN PARK	Low
BP1	251	053-0811921430002	Liberty Carton and Star Exhibits	6900	93RD AVE N	BROOKLYN PARK	Low
BP1	252	053-0811921340007	Commercial Building	7200	93RD AVE N	BROOKLYN PARK	Low
BP1	253	053-0811921330024	Biotest Laboratories	9303	WEST BROADWAY	BROOKLYN PARK	Low
BP1	254	053-0811921340004	Undeveloped Land	9301	LOUISIANA AVE N	BROOKLYN PARK	Low
BP1	254	053-0811921310003	Undeveloped Land	48	ADDRESS UNASSIGNED	BROOKLYN PARK	Low
BP1	254	053-0811921310005	Undeveloped Land	48	ADDRESS UNASSIGNED	BROOKLYN PARK	Low
BP1	254	053-0811921340001	Undeveloped Land	48	ADDRESS UNASSIGNED	BROOKLYN PARK	Low
BP1	254	053-0811921340005	Undeveloped Land	48	ADDRESS PENDING	BROOKLYN PARK	Low
BP1	254	053-0811921310010	Undeveloped Land	9400	WEST BROADWAY	BROOKLYN PARK	Low
BP1	254	053-0811921340008	Undeveloped Land	9350	WEST BROADWAY	BROOKLYN PARK	Low
BP1	255	053-0811921330023	Northwest EMC	9349	WEST BROADWAY	BROOKLYN PARK	Medium
BP1	256	053-0811921330012	Holiday	9399	WEST BROADWAY	BROOKLYN PARK	Medium
BP1	257	053-0811921320004	Baxter Healthcare	9450	WINNETKA AVE N	BROOKLYN PARK	Medium
BP1	257	053-0811921330020	Baxter Healthcare	48	ADDRESS UNASSIGNED	BROOKLYN PARK	Medium
BP1	258	053-0811921330018	Undeveloped Land	9400	WINNETKA AVE N	BROOKLYN PARK	High
BP1	259	053-0811921420003	Olympus Surgical Technologies America	9600	LOUISIANA AVE N	BROOKLYN PARK	Low
BP1	260	053-0811921130004	Target Corporation	6901	OAK GROVE PKWY N	BROOKLYN PARK	Medium
BP1	260	053-0811921120006	Target Corporation	7000	TARGET PKWY N	BROOKLYN PARK	Medium
BP1	260	053-0811921210005	Target Corporation	7010	TARGET PKWY N	BROOKLYN PARK	Medium
BP-1	260	053-0811921130003	Target Corporation	6801	OAK GROVE PKWY N	BROOKLYN PARK	Medium
BP1	261	053-0811921240004	Undeveloped Land	48	ADDRESS UNASSIGNED	BROOKLYN PARK	Low
BP1	262	053-0811921230004	Undeveloped Land	9730	WINNETKA AVE N	BROOKLYN PARK	Low
BP1	263	053-0811921230002	Undeveloped Land	9800	WINNETKA AVE N	BROOKLYN PARK	Medium
BP1	264	053-0811921220001	Undeveloped Land	10032	WINNETKA AVE N	BROOKLYN PARK	Medium
BP1	265	053-0711921110004	Undeveloped Land	8005	101ST AVE N	BROOKLYN PARK	Low
BP1	266	053-0711921110003	Undeveloped Land	8201	101ST AVE N	BROOKLYN PARK	Low
BP1	267	053-0711921110002	Undeveloped Land	8249	101ST AVE N	BROOKLYN PARK	Low
BP1	268	053-0511921340001	Three Rivers Park District Rush Creek Regional Trail	48	ADDRESS UNASSIGNED	BROOKLYN PARK	Low
BP1	269	053-0711921120004	Grace Fellowship Church	8601	101ST AVE N	BROOKLYN PARK	Medium
BP1	270	053-0611921440001	Undeveloped Land	10225	WINNETKA AVE N	BROOKLYN PARK	Low
BP1	271	053-0611921430006	Three Rivers Park District Rush Creek Regional Trail	48	ADDRESS UNASSIGNED	BROOKLYN PARK	Medium

Appendix M

References

Bloomgren et al., "Depth to bedrock and bedrock topography," *Geologic Atlas - Hennepin County, Minnesota*, County Atlas Series, Atlas C-4, Plate 4, Scale 1:100,000, Balban, N. H., ed., University of Minnesota - Minnesota Geological Survey, 1989.

Kanivetsky, R., "Quaternary Hydrogeology," *Geologic Atlas - Hennepin County, Minnesota*, County Atlas Series, Atlas C-4, Plate 5, Scale 1:133,333, Balban, N. H., ed., University of Minnesota - Minnesota Geological Survey, 1989a.

Kanivetsky, R., "Bedrock Hydrogeology," *Geologic Atlas - Hennepin County, Minnesota*, County Atlas Series, Atlas C-4, Plate 6, Scale 1:150,000, Balban, N. H., ed., University of Minnesota - Minnesota Geological Survey, 1989b.

Meyer, G. N., and Hobbs, H. C., "Surficial Geology," *Geologic Atlas - Hennepin County, Minnesota*, County Atlas Series, Atlas C-4, Plate 3, Scale 1:100,000, Balban, N. H., ed., University of Minnesota - Minnesota Geological Survey, 1989.

Olsen et al., "Bedrock Geology," *Geologic Atlas - Hennepin County, Minnesota*, County Atlas Series, Atlas C-4, Plate 2, Scale 1:100,000, Balban, N. H., ed., University of Minnesota - Minnesota Geological Survey, 1989.