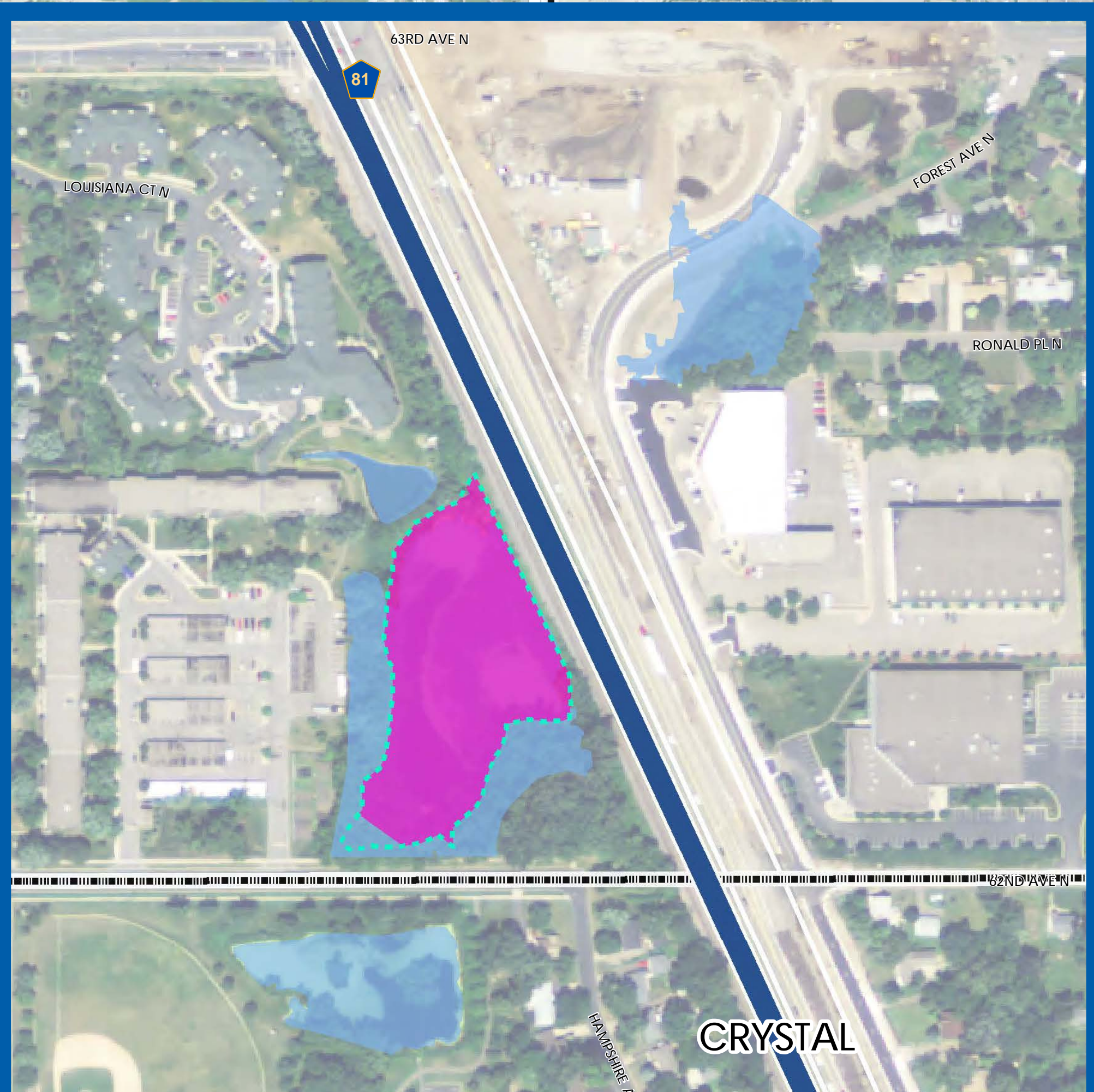


Several isolated basins will potentially be impacted north of Highway 610. These impacts are associated with trackage, the Oak Grove Station, the Operations and Maintenance Facility (OMF), and local road connections. Wetland impacts were reduced with a re-design of the OMF. One potential impact is to a wetland mitigation bank constructed in 2004 to compensate for previous impacts associated with the Target Corporation Campus.



This wetland is a stormwater pond that receives runoff from development and impervious surfaces to the west and from adjacent roads and streets.

- Station
- Blue Line Alignment
- Delineated Wetland
- Potential Wetland Impacts
- Floodplains and Floodway
- NWI Updated (2015)
- Parks

