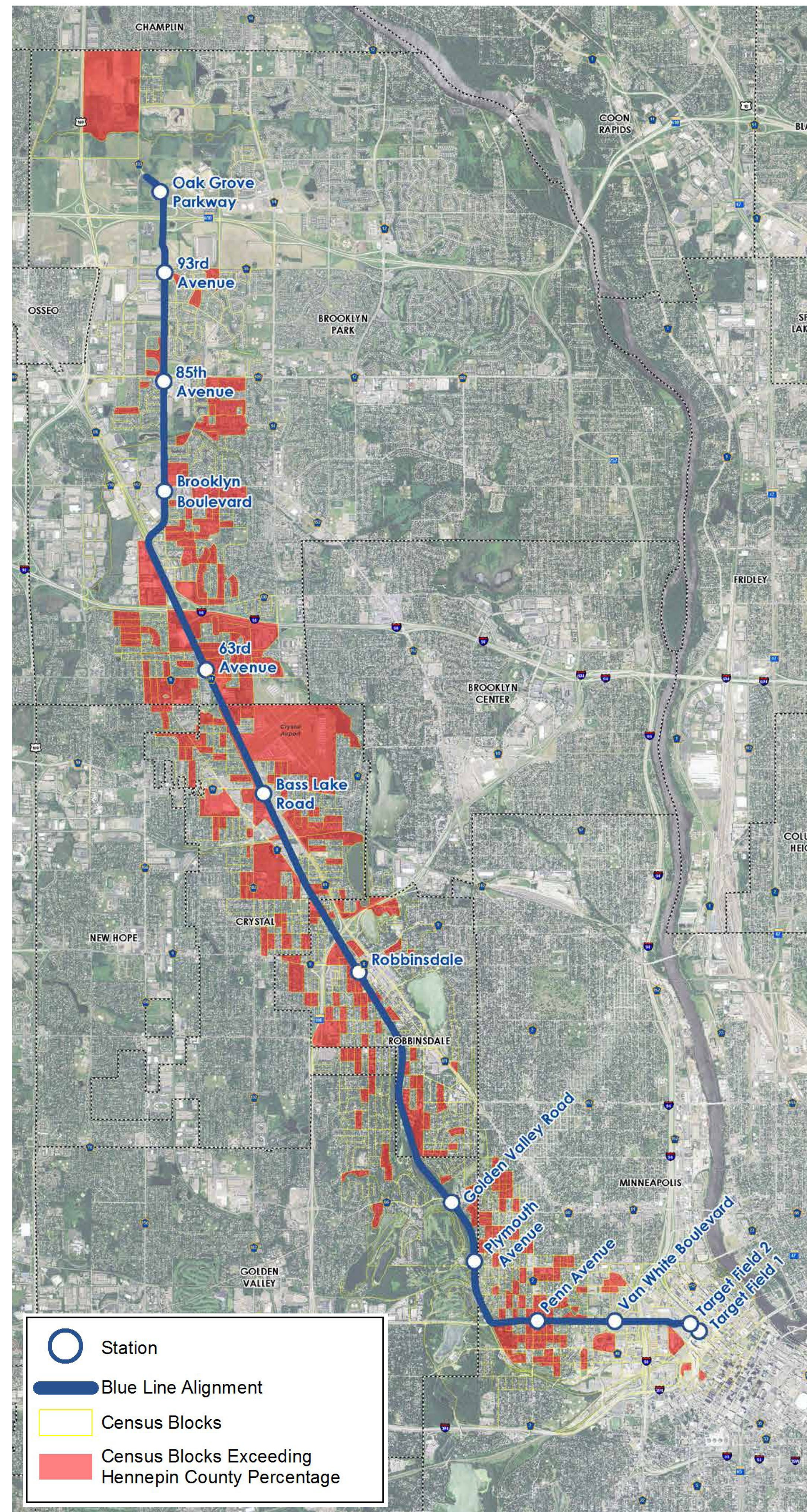


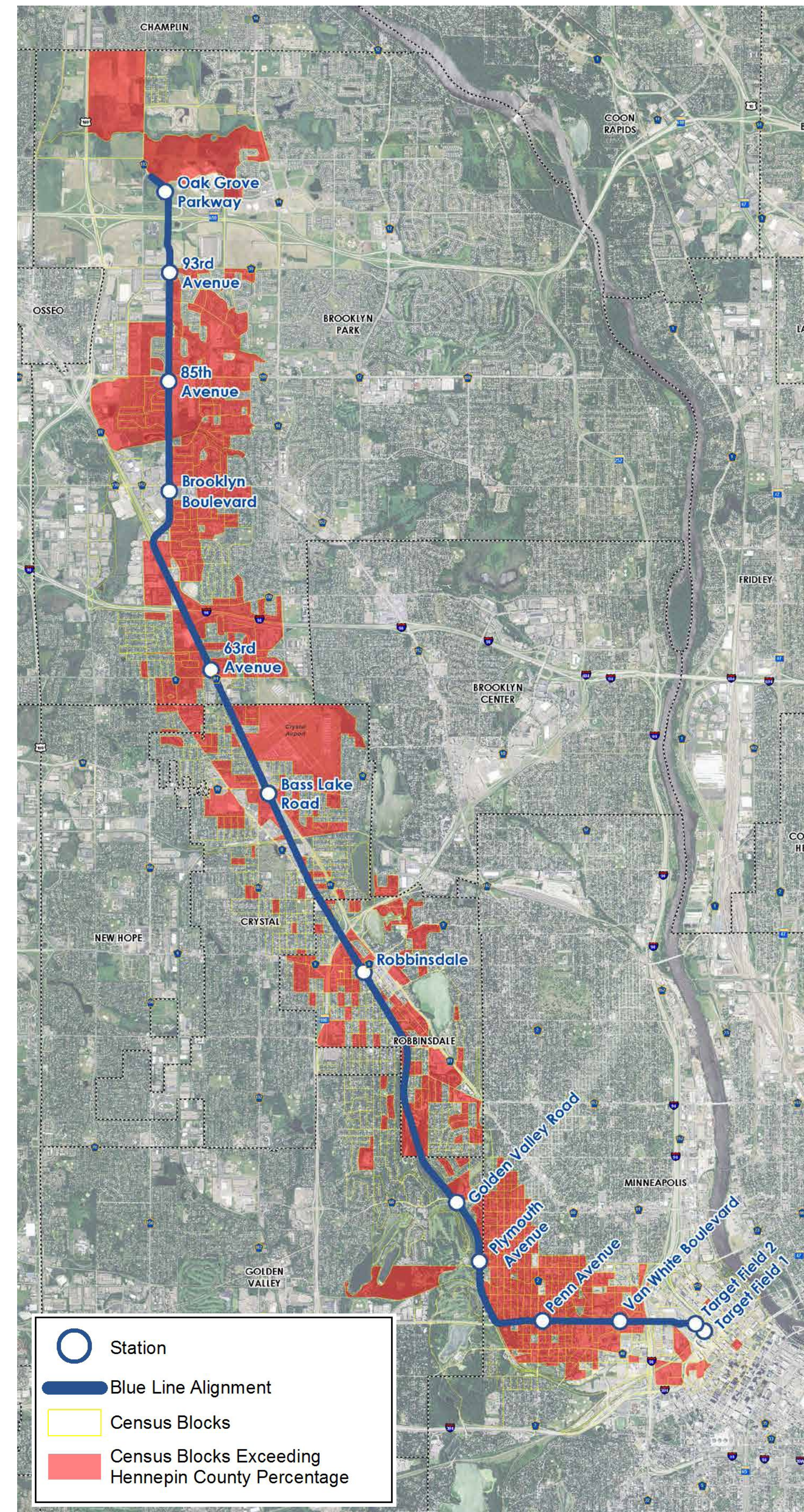
## HISPANIC OR LATINO (ALL RACES)



**Environmental Justice / Minority Concentrations within 1/2 Mile of Project Corridor**  
 Hispanic or Latino (all races)  
 Hennepin County Percentage: 6.7%  
 Census Blocks Exceeding Hennepin County Percentage

Source: U.S. Census 2010

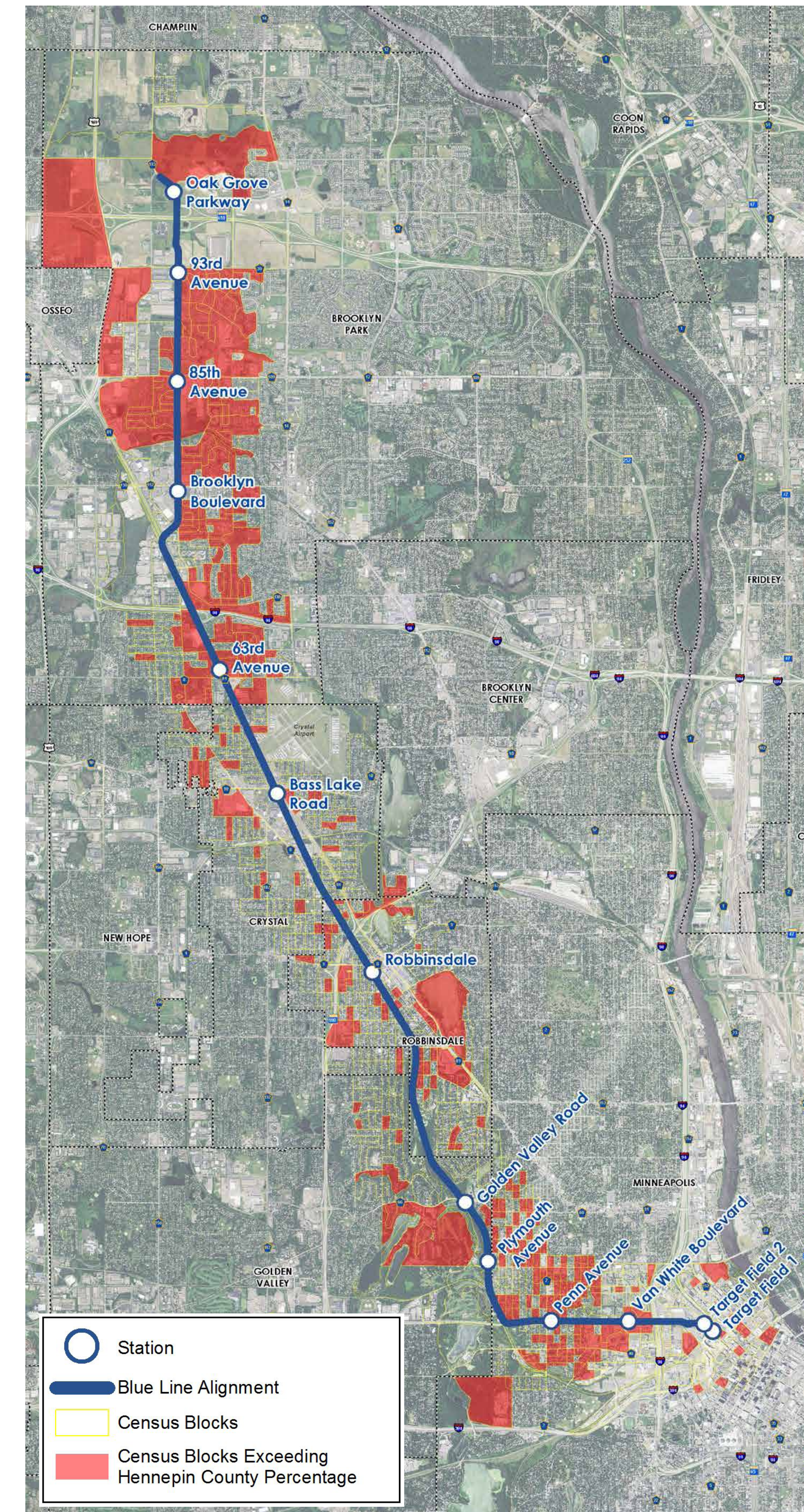
## BLACK OR AFRICAN AMERICAN



**Environmental Justice / Minority Concentrations within 1/2 Mile of Project Corridor**  
 Black or African American alone (non-Hispanic)  
 Hennepin County Percentage: 11.6%  
 Census Blocks Exceeding Hennepin County Percentage

Source: U.S. Census 2010

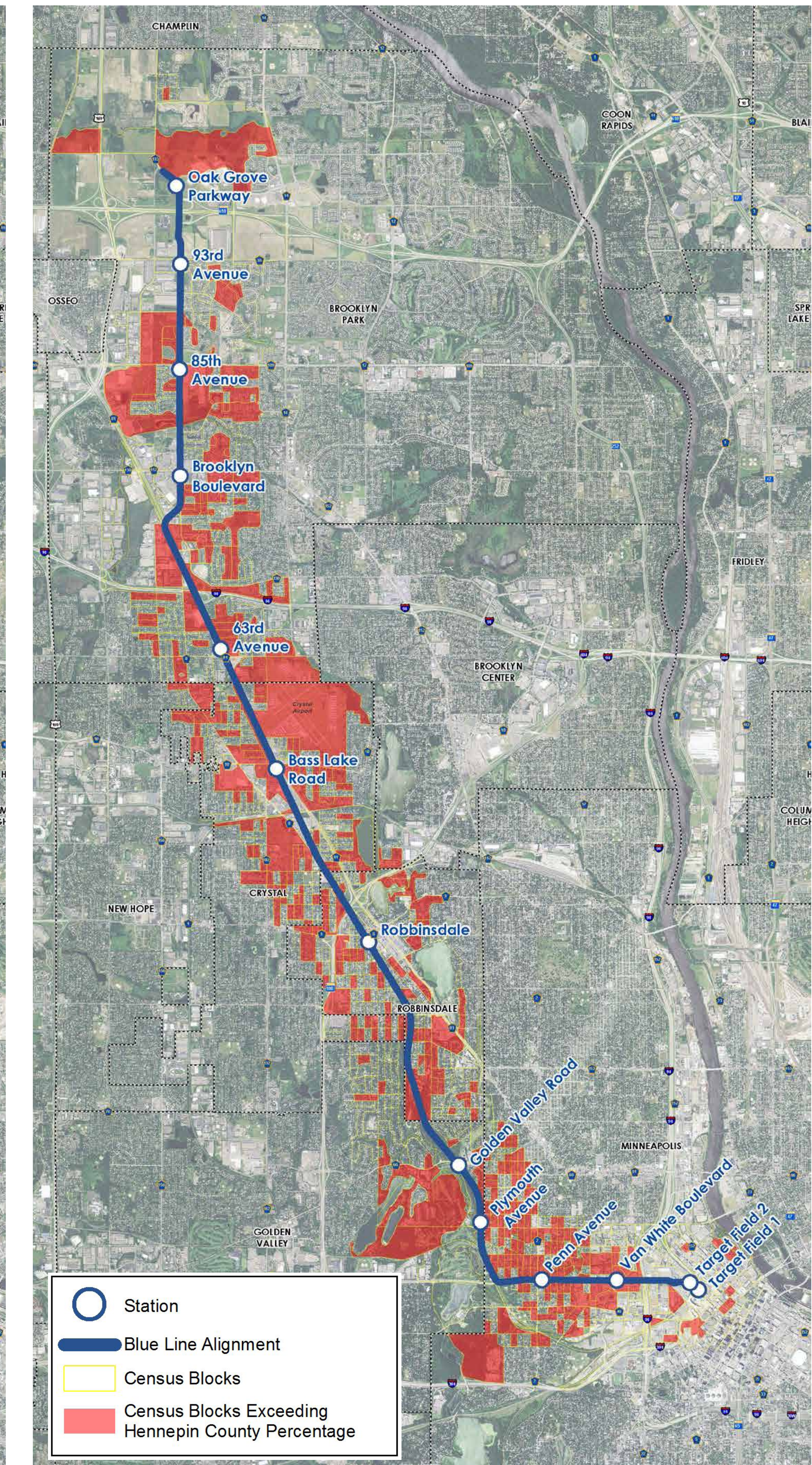
## ASIAN



**Environmental Justice / Minority Concentrations within 1/2 Mile of Project Corridor**  
 Asian alone (non-Hispanic)  
 Hennepin County Percentage: 6.2%  
 Census Blocks Exceeding Hennepin County Percentage

Source: U.S. Census 2010

## OTHER



**Environmental Justice / Minority Concentrations within 1/2 Mile of Project Corridor**  
 Other: American Indian and Alaska Native alone, Native Hawaiian and Other Pacific Islander alone, Some Other Race alone, and Two or More Races (non-Hispanic)  
 Hennepin County Percentage: 3.7%  
 Census Blocks Exceeding Hennepin County Percentage

Source: U.S. Census 2010