



City of Brooklyn Park Open House

August 11, 2015



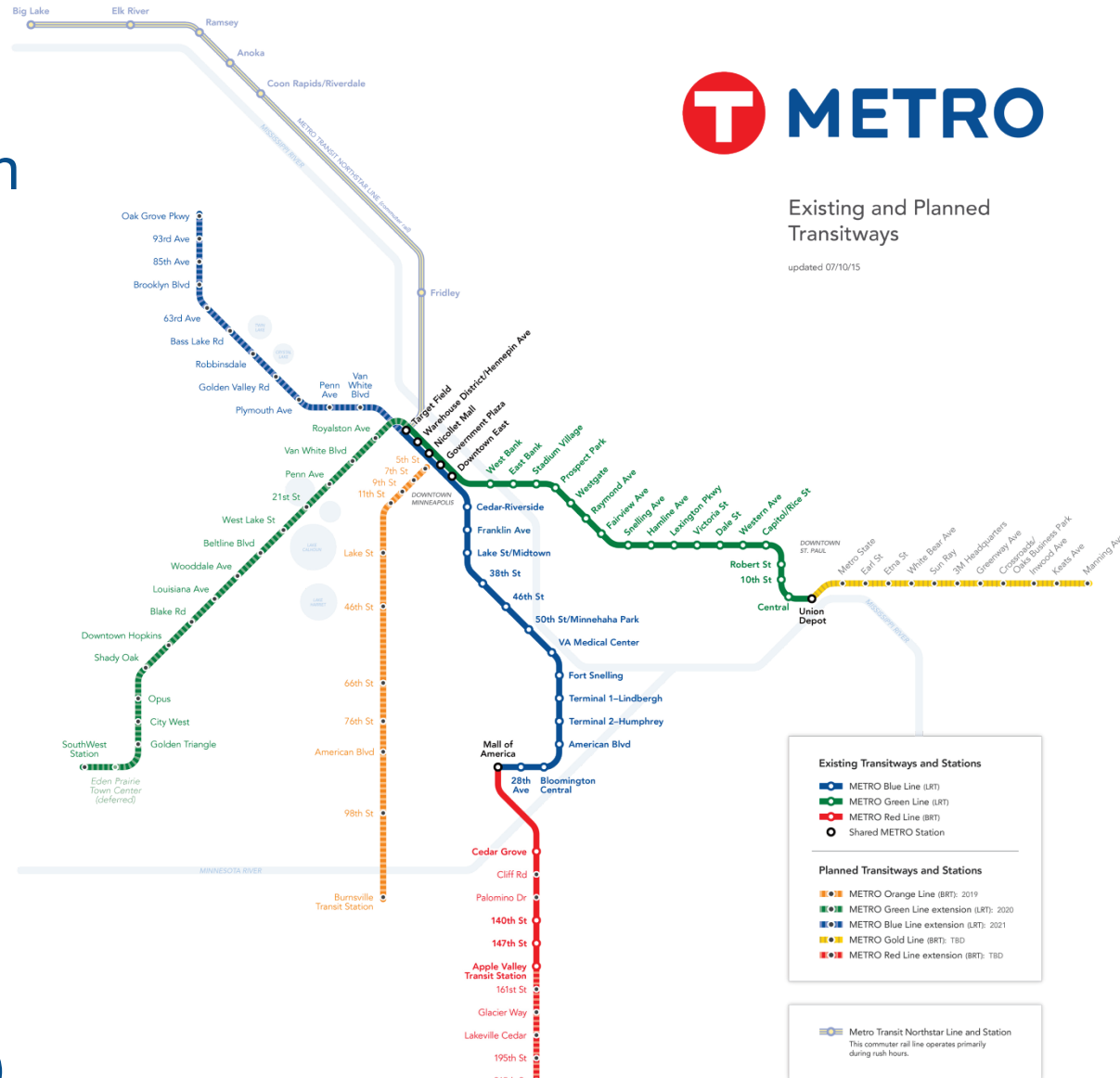
METRO System

- Green Line Extension (Southwest LRT)
- Blue Line Extension (Bottineau LRT)
- Orange Line (I-35 W South Bus Rapid Transit)
- Red Line Expansion (Cedar Avenue BRT)



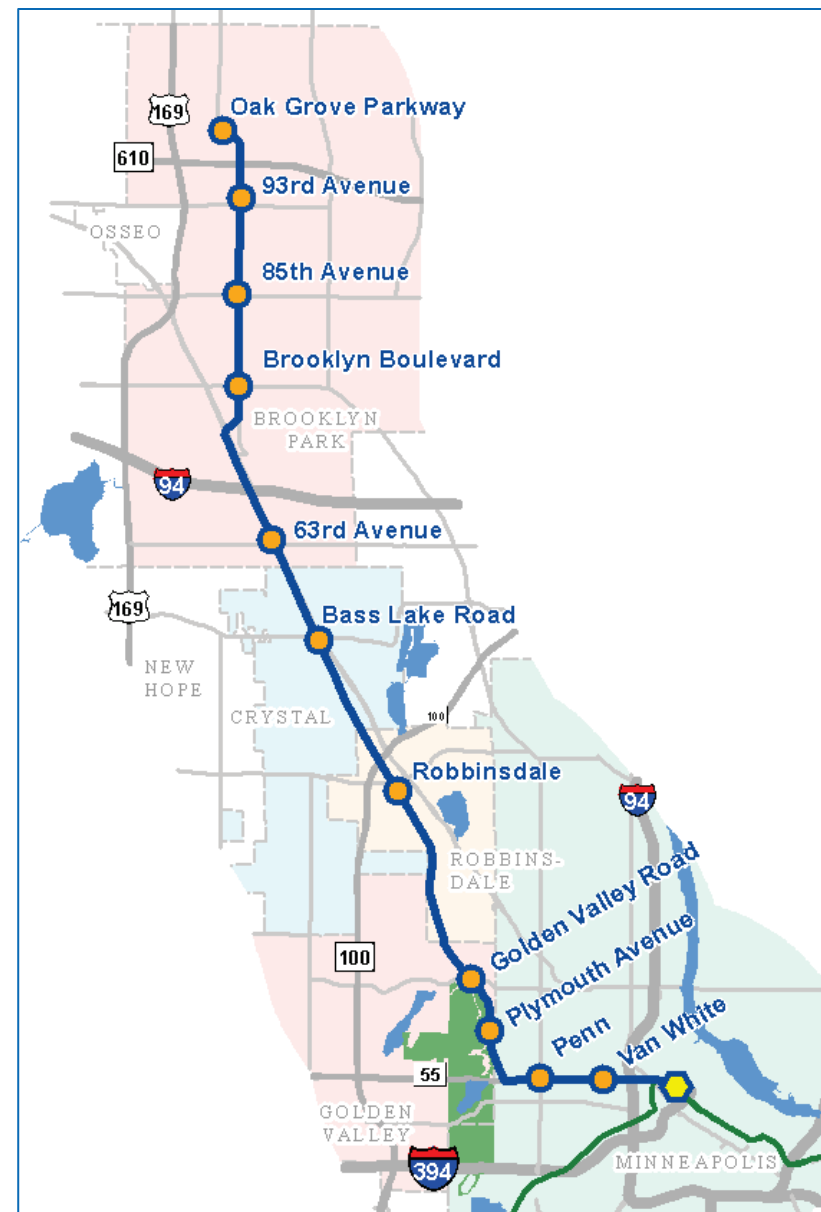
Existing and Planned Transitways

updated 07/10/15



Project Description

- 10 or 11 new LRT stations
- 13 miles of double track
- 27,000 est. rides by 2030 (DEIS)
- Serving Brooklyn Park, Crystal, Robbinsdale, Golden Valley & Minneapolis
- Provides one seat Blue Line ride to MSP Airport and Mall of America
- Connections to METRO Green Line, Northstar and bus services



Project Timeline

2014-2016

- Project Development

2016

- Environmental/Municipal Consent

2017

- Engineering

2018

- Full Funding Grant Agreement

2018-20

- Heavy Construction

2021

- Passenger Operations



What is Light Rail Transit (LRT)?

- High capacity
- Quick acceleration & braking
- Powered by electricity
- Quiet operation
- Frequent service 21 hours/day
- Stops every ½ - 1 mile



Pedestrian & Bike Elements: Crossings



Countdown timer



Truncated domes mark crosswalk



Sign marks crosswalk and alerts drivers



Tactile button and audible tones announce when crossing is permitted



Safety Features



Warning devices alert pedestrians to approaching trains and signs instruct people to look both ways.



Security Features

- Open and transparent station design to promote visibility



Security camera



Emergency phone



What We Heard at Brooklyn Park Open House June 17

- What excites you most:
 - It will better connect Brooklyn Park with the rest of the metro. Easier access to jobs, education, recreation, events, medical care
 - Improved sidewalks, bike paths, streets and curbs to access stations and regional trails
- What are some potential drawbacks:
 - Impacts on homes close to the line (land acquisition, noise, vibration)
 - Traffic safety for pedestrian/bike crossings, automobile safety or LRT crossing Hwy 81 at 73rd, traffic signals, lighting
 - Make sure there is parking to meet needs and avoid 'hide and ride'
 - Design OMF to fit future residential surrounding
 - Construct LRT with compact footprint

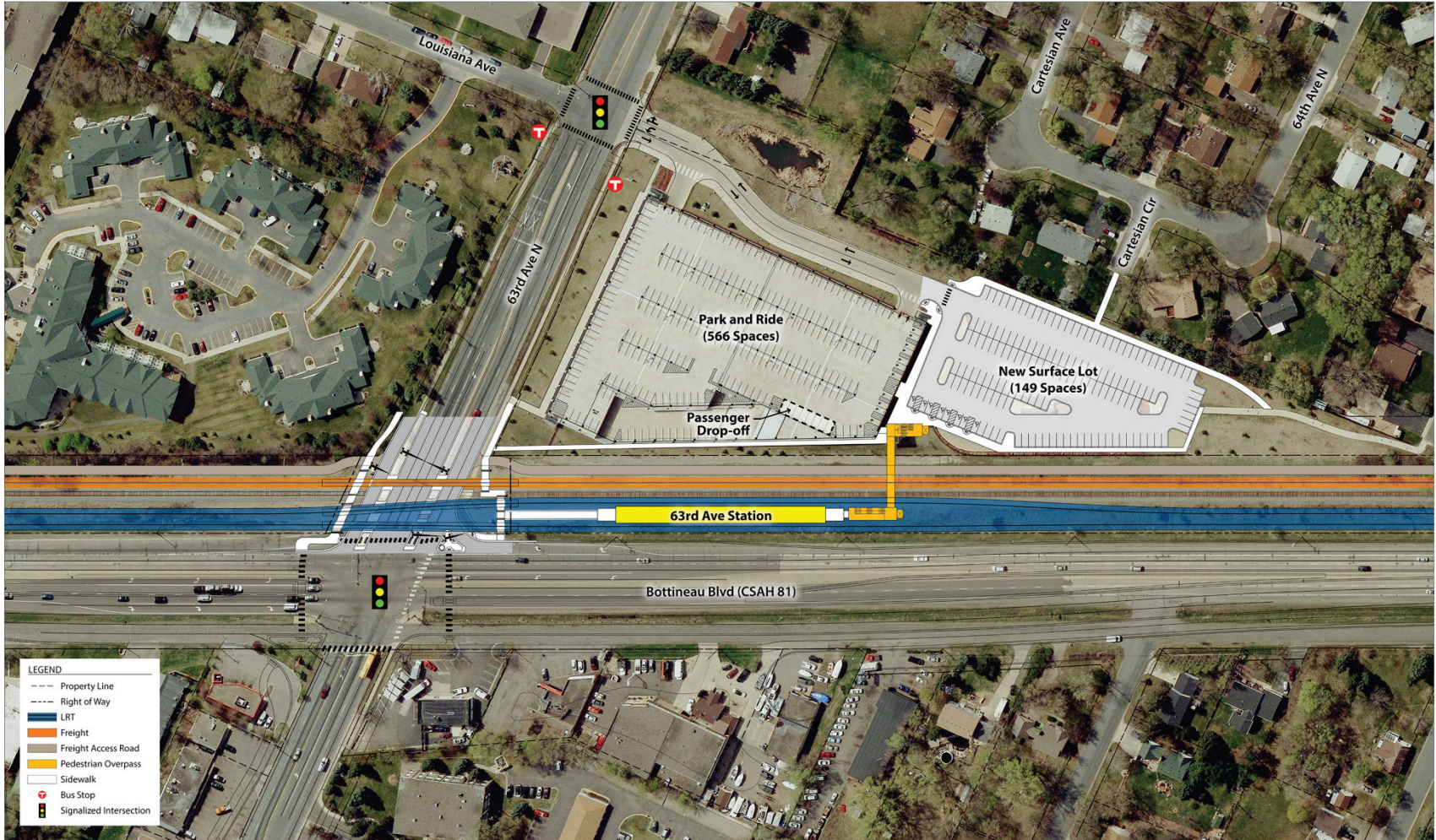


What We Heard at Brooklyn Park Open House June 17

- What do you see as the benefits and/or impacts of a proposed station:
 - Neighborhood Residents:
 - Ease of transit to the employers/educators on the line allows rider range of employment and education w/o car
 - How bus routes and bus stops will tie in to LRT so more of Brooklyn Park can access LRT
 - Brooklyn Park Businesses:
 - Potential for economic redevelopment, new business, and job growth along five stations
 - Access to bigger pool of employees
 - Business access during construction



63rd Avenue Station



DRAFT
WORK IN PROCESS



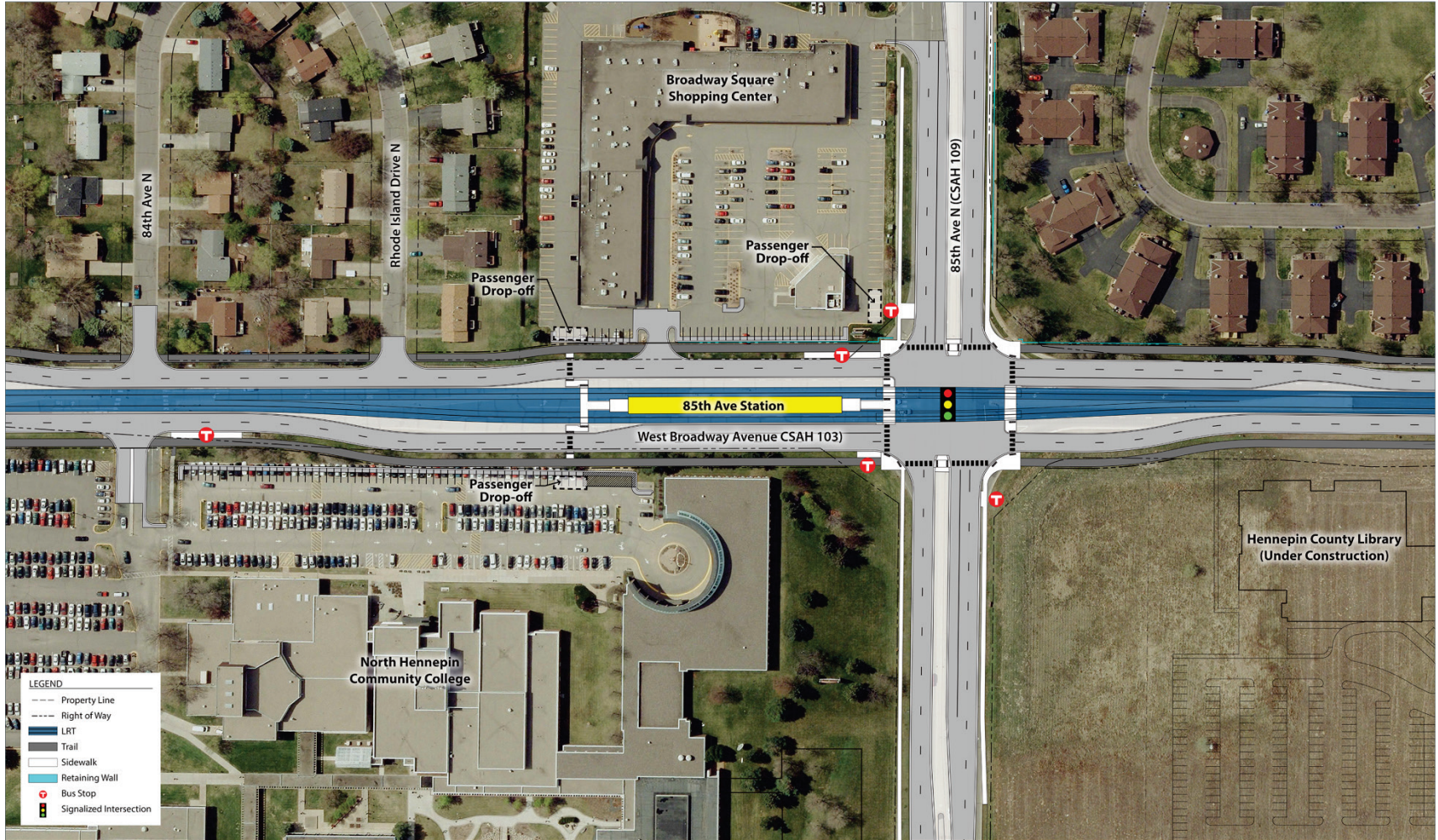
Brooklyn Boulevard Station



DRAFT
WORK IN PROCESS



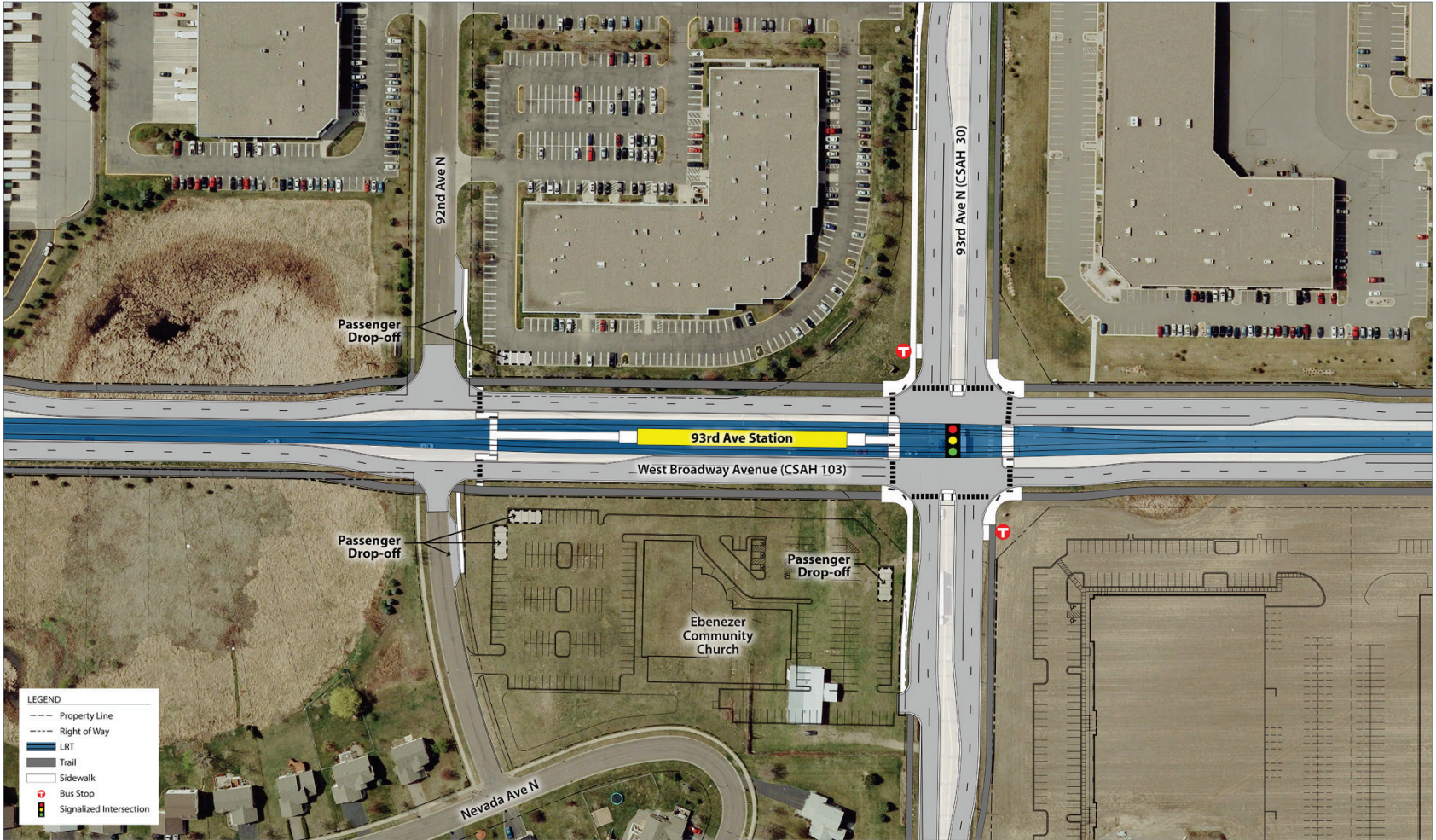
85th Avenue Station



DRAFT
WORK IN PROCESS



93rd Avenue Station



DRAFT
WORK IN PROCESS



Oak Grove Parkway & OMF



DRAFT – WORK IN PROCESS



Community Outreach Coordinator

- Juan Rangel
 - Serves Brooklyn Park
 - E-mail: Juan.Rangel@metrotransit.org
 - Phone: 612-373-5338
- What to expect:
 - Available to answer questions and relay feedback to design and environmental teams
 - Regular contact regarding process and project progress
 - Transparency
- Two-way communications:
 - Call or email with questions, ideas and concerns
 - Share ideas about stakeholders we should meet

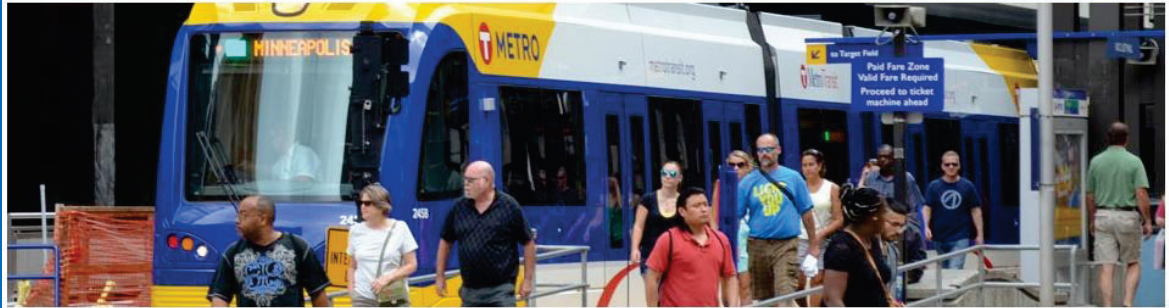


More Information

About Us | News & Events | Data & Maps | Publications | Doing Business | Council Meetings | Contact Us | Employment

METROPOLITAN COUNCIL

COMMUNITIES | PARKS | **TRANSPORTATION** | WASTEWATER & WATER | HOUSING | PLANNING



METRO BLUE LINE EXTENSION

METRO BLUE LINE EXTENSION

Bottineau Transitway – Minneapolis & Northwestern Communities

The METRO Blue Line Extension (LRT) will operate northwest from downtown Minneapolis through north Minneapolis, Golden Valley, Robbinsdale, Crystal and Brooklyn Park, drawing riders northwest of Brooklyn Park. The proposed alignment is primarily at-grade and will have up to 11 new stations in addition to Target Field Station and about 13 miles of double track. The line will interline with the METRO Blue Line and connect Minneapolis and the region's northwest suburbs with existing LRT on the METRO Green Line, future LRT on the METRO Green Line Extension, bus rapid transit on the METRO Red Line, the Northstar commuter rail line and local and express bus routes.

Latest News
Feds: Met Council can begin designing METRO Blue Line Extension

Route
Click on the map below for more information

- Route
- Stations
- Environmental
- Timeline
- Project Partners

Website: BlueLineExt.org

Email: BlueLineExt@metrotransit.org

Twitter: [@BlueLineExt](https://twitter.com/BlueLineExt)

