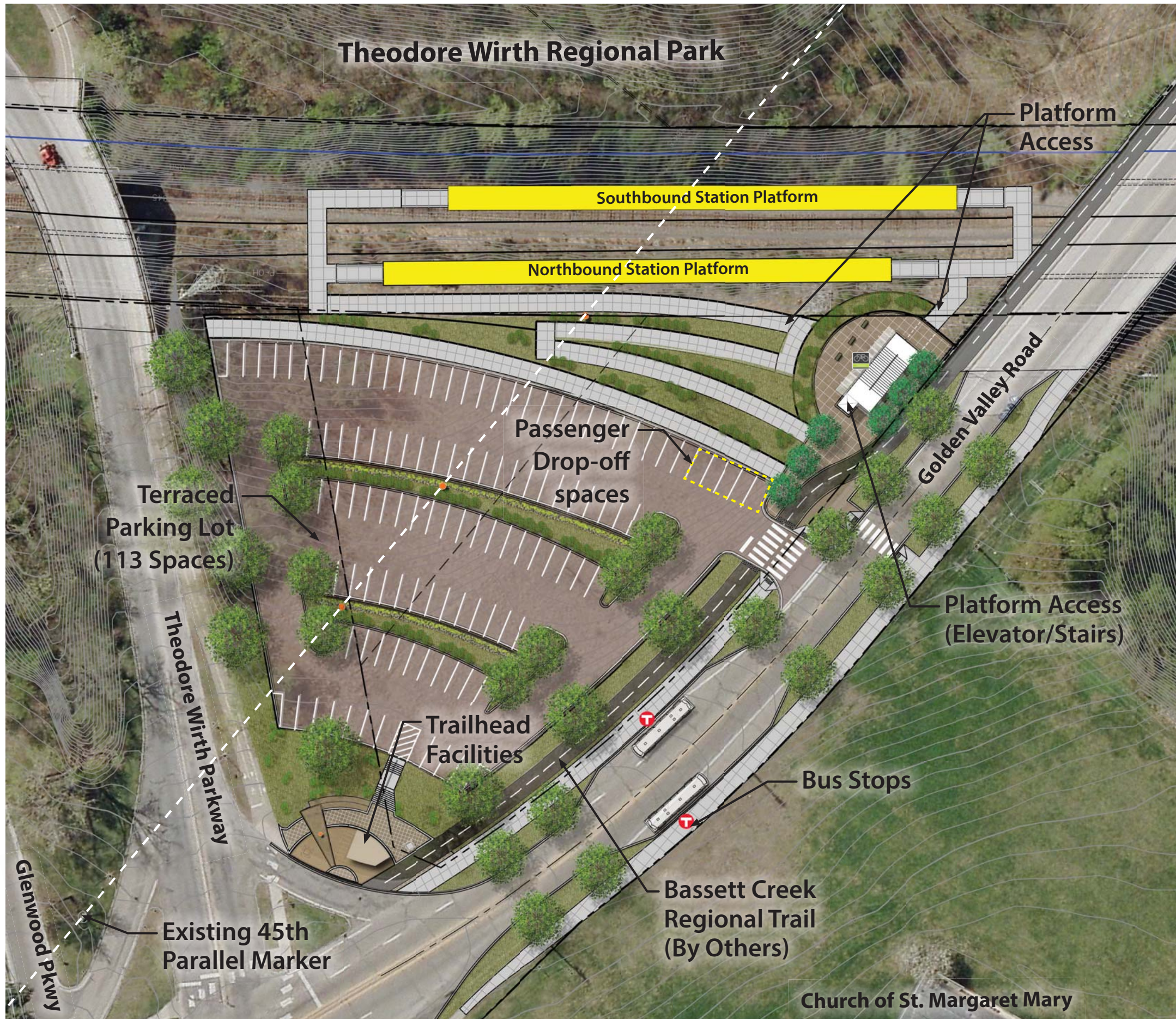


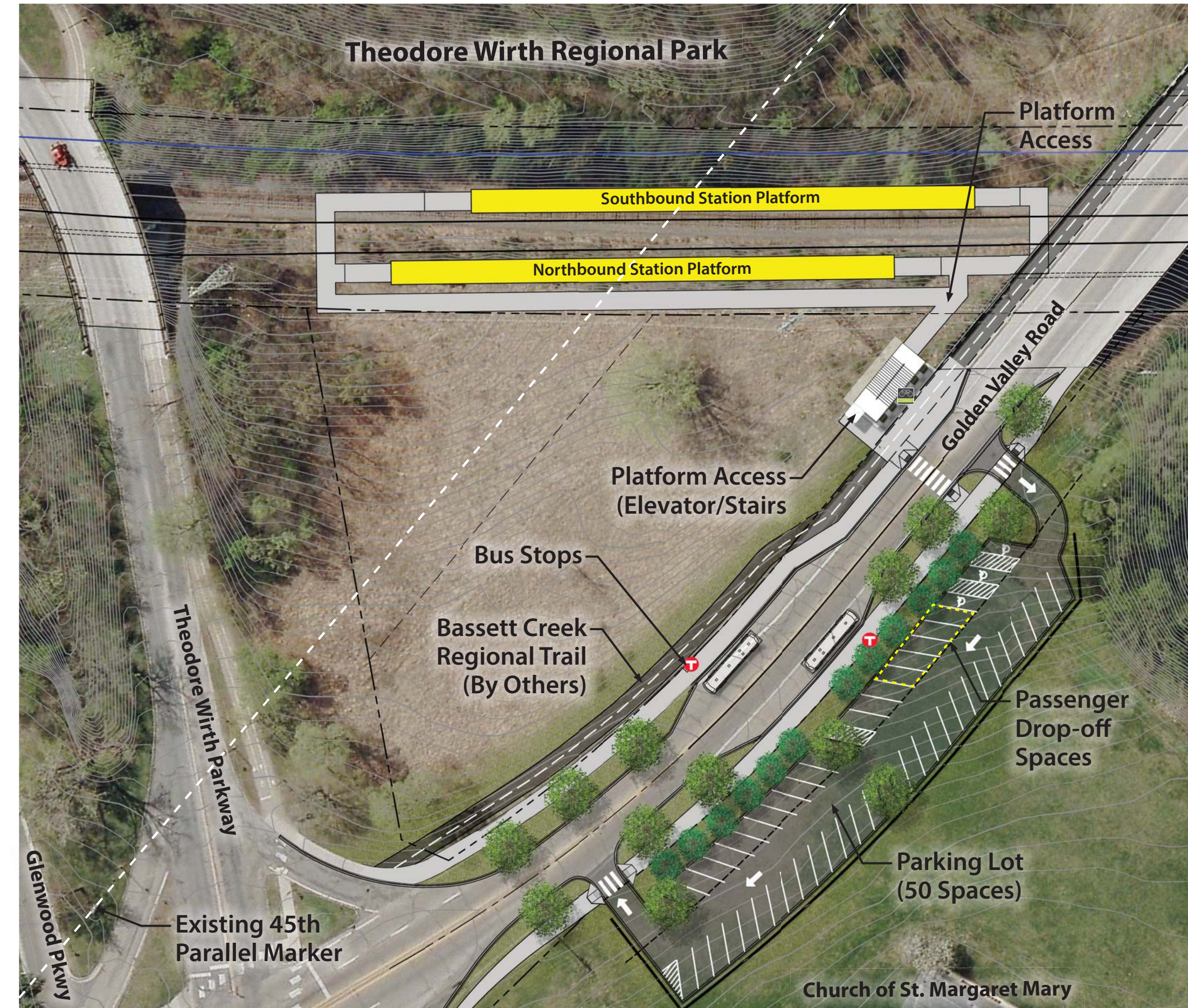
Minneapolis Park and Recreation Board Site



Parking Concept Characteristics

- 113 parking spaces
- Terraced parking lot design
- Restore native plantings
- Design maintains views to Theodore Wirth Park
- Full ADA and bicycle access from ramps and vertical circulation
- Terraced retaining walls with plantings to visually reduce height
- Potential for shared trail head parking

Church of St. Margaret Mary Site



Parking Concept Characteristics

- 50 parking spaces
- Parking lot design requires retaining wall on north side of site
- Parking screened from Golden Valley Road
- Design maintains views to Theodore Wirth Park
- Full ADA and bicycle access through vertical circulation