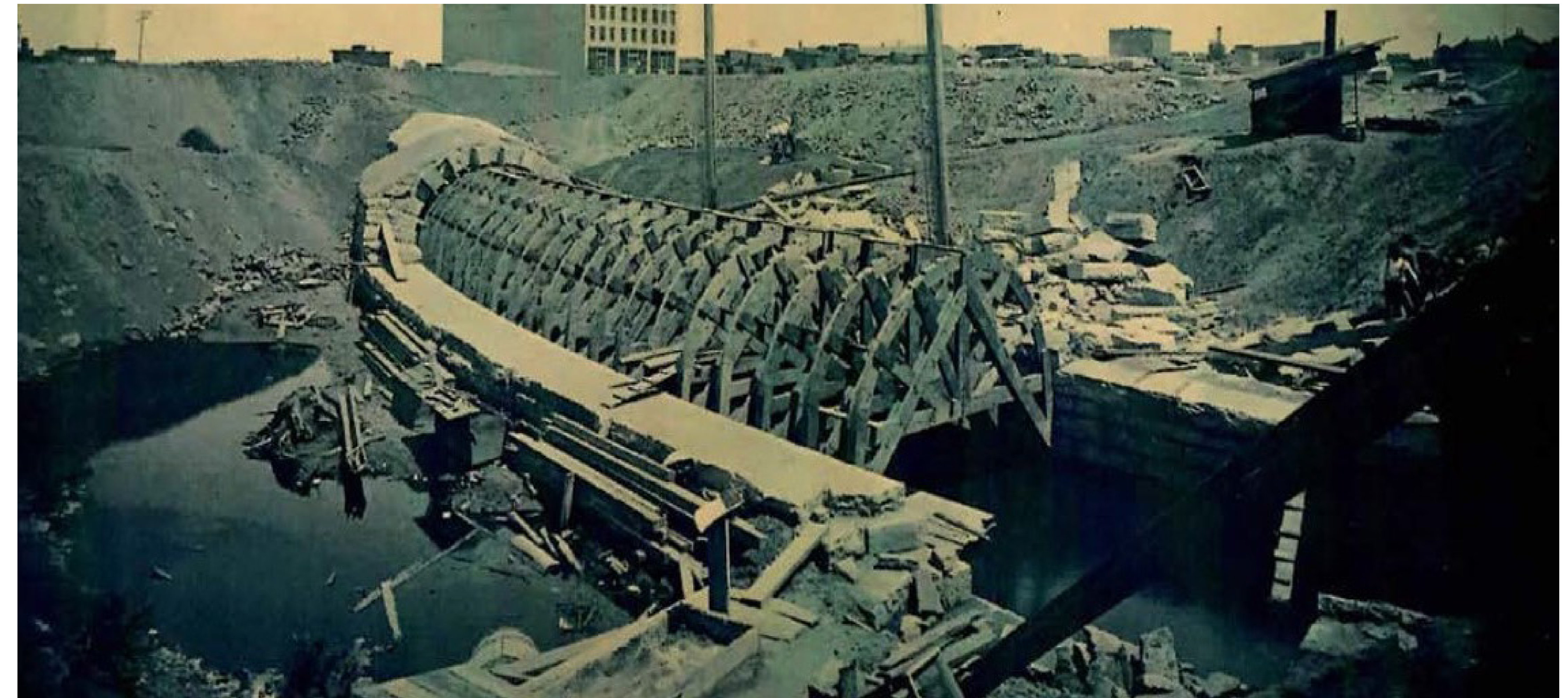


BASSETT CREEK TUNNEL RELOCATION

- Identified on MnDOT's structurally deficient list
- The existing Bassett Creek storm sewer conflicts with the planned Van White Station and the Light Rail guideway
- It is a critical path element, reducing construction staging and phasing of Olson Memorial Highway (OMH) reconstruction
- Relocation needs to occur during stormwater low-flow time period, which is Fall/Winter



Bassett Creek Tunnel, 1884 Construction

CONSTRUCTION OVERVIEW

Fall 2017

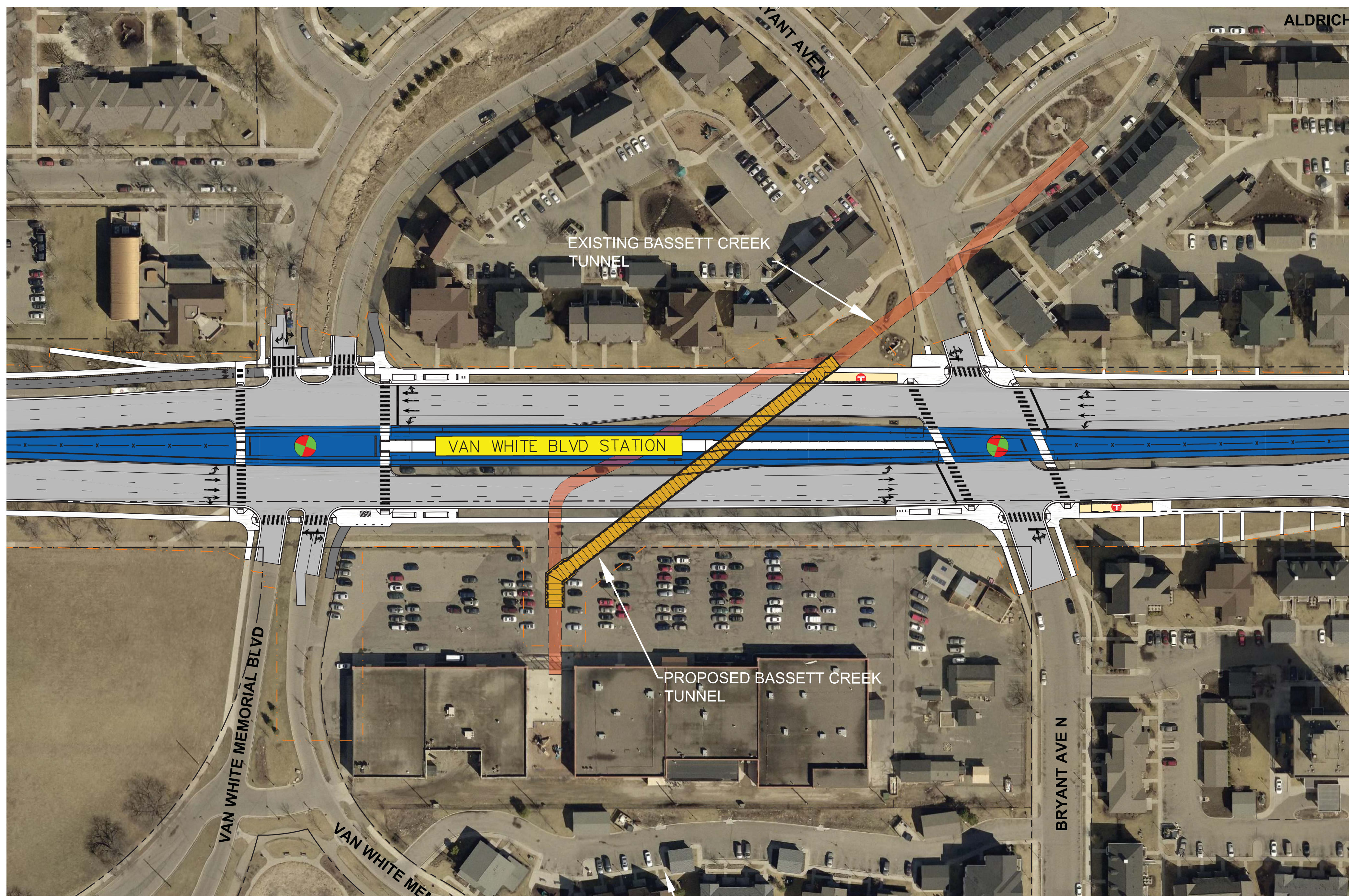
- Installation of precast box culvert and two 42" MCES conveyance pipes
- Closure of OMH to start after October 27, 2017, allowing completion of I-94 work
- Closure date(s) have been coordinated with MnDOT, Hennepin County, and the City of Minneapolis
- Up to 12-day road closure of OMH between West Lyndale Avenue and Van White Memorial Boulevard
- Contractor anticipates working 24 hours-a-day, 7 days per week during the closure of OMH

Winter 2017/2018

- North Bassett Creek Tunnel closure: concrete placement between OMH and Heritage Park townhomes occurring with lane closures on OMH
- South Bassett Creek Tunnel closure: concrete placement requires construction work in the Summit OIC parking lot
- MCES lining includes 36" pipe installed within existing egg-shaped sanitary sewer

Spring 2018

- Cleanup and restoration



Bassett Creek Tunnel

DRAFT
WORK IN PROCESS



Blue Line LRT Extension

During construction, Olson Memorial Highway (Highway 55) will be closed between Van White Memorial Boulevard and West Lyndale Avenue in Minneapolis.

REGIONAL DETOUR MAP



Detour routes:

- Eastbound Olson Memorial Highway detoured to southbound Hwy 100 to eastbound I-394
- Westbound Olson Memorial Highway detoured to westbound I-394 to northbound Hwy 100
- Eastbound local traffic detoured southbound on Penn Avenue to eastbound I-394

- Please don't go around barriers into construction zones.
- Construction hours are 24/7, including the weekend, during the road closure.
- Construction hours will generally be from 7 a.m. to 6 p.m. weekdays, in the following month to finish connecting the pipe.

Schedules are subject to changes due to weather and other unforeseen circumstances. Check www.BlueLineExt.org for updates.

LOCAL ACCESS MAP



Local access:

- Pedestrian east-west access along Olson Memorial Highway maintained on one side at-all times; follow pedestrian detour signage.
- Bus stops on Olson Memorial Highway at Bryant Avenue and westbound bus stop at Van White Memorial Boulevard will be closed. Use existing bus stops at Humboldt Avenue or Lyndale/7th Street.
- Eastbound local traffic detoured southbound on Van White Memorial Boulevard to eastbound Glenwood Avenue to northbound East Lyndale Avenue.
- Westbound local traffic detoured to southbound West Lyndale Avenue to westbound Glenwood Avenue to northbound Van White Memorial Boulevard.
- Access to Summit Academy OIC from driveway along Van White Memorial Boulevard south of Olson Memorial Highway and from driveway near Bryant Ave on the frontage road.

DRAFT
WORK IN PROCESS

