



METRO BLUE LINE EXTENSION (BOTTINEAU LRT)

Municipal Consent Guide

Minnesota law requires the Metropolitan Council to seek local review and approval for the METRO Blue Line Extension (Bottineau Transitway) project. This process is known as municipal consent. During municipal consent, the public can also review the plans and provide comments directly to local governments or to the Metropolitan Council.

The Metropolitan Council, the Hennepin County Regional Railroad Authority (HCRRA), Hennepin County and the cities along the METRO Blue Line Extension route (Brooklyn Park, Crystal, Robbinsdale, Golden Valley, and Minneapolis) will hold public hearings and receive comments on design plans during the municipal consent process, as set out in Minnesota Statutes Sec. 473.3994.

After reviewing the plans and receiving comments, Hennepin County and the city governments will vote to approve or disapprove the revised plans by March 4, 2016.

These revised preliminary design plans show the general dimensions and location of the light rail tracks, stations and other components.

The revised plans are available in printed form or as electronic documents on the Blue Line Extension Project website (see page 4 for a list of locations).

The Metropolitan Council, Hennepin County Board of Commissioners and Hennepin County Regional Railroad Authority will hold a joint public hearing on January 19, 2016.

Between January 19 and March 4, 2016, the cities will hold separate public hearings before their city councils vote on the plans. These meetings will deal only with the content of the revised preliminary design plans.

PUBLIC HEARINGS

Tuesday, January 19, 2016
Minneapolis Central Library, Pohlad Hall
300 Nicollet Mall, Minneapolis

Open House: 5:00 p.m.
Public Hearing: 6:00 p.m.

Joint public hearing by the Metropolitan Council, Hennepin County Board of Commissioners and Hennepin County Regional Railroad Authority (HCRRA) on the physical design component of the preliminary design plans for the METRO Blue Line Extension (Bottineau Transitway) Project.

January, February, March 2016

Cities will hold separate public hearings before March 4, 2016. For more information, contact your city government.

More information on public hearings will be posted on the Blue Line Extension website at www.BlueLineExt.org.

See following pages to find out:

- ✓ *How to read the municipal consent plans*
- ✓ *Where to obtain copies of the plans*
- ✓ *How to submit written comments*

How to Read the Design Plans

The design plans are divided into **segments** by city. There is a plan set for each city along the proposed LRT route. The first few pages of each plan include a guide that shows the entire corridor, the segment's position on the corridor and a key to the symbols and abbreviations used in the plan.

The plans for each segment are separated into **disciplines**, including: tracks, station locations, roads and turn lanes, sidewalks, curbs and gutters, crosswalks, traffic signals, parking facilities, bus stops and trails. Existing conditions are also shown.

Within each discipline, sequences of detailed drawings show the placement and design of light rail facilities. Each drawing in a sequence is numbered.

Step 1: Find the **SEGMENT** that interests you in the table below.

A detailed map is provided at the beginning of each plan.

City	Area Description	Stations	Segment Code
Minneapolis	On Olson Memorial Highway east of 7th Street to Theodore Wirth Park	Van White Boulevard Penn Avenue	M
Golden Valley	In freight rail corridor from Olson Memorial Highway to North of Golden Valley Road	Plymouth Avenue Golden Valley Road	GV
Robbinsdale	In freight rail corridor from North of Golden Valley Road to 46th Ave N	Robbinsdale	R
Crystal	In freight rail corridor from 46th Ave N to 62nd Ave	Bass Lake Road	C
Brooklyn Park	In freight rail corridor from 62nd Ave to 73rd Ave; in West Broadway Ave from 73rd Ave to Rush Creek Regional Trail	63rd Avenue Brooklyn Boulevard 85th Avenue, 93rd Avenue Oak Grove Parkway	BP

Step 2: Determine which **DISCIPLINE** includes the information that interests you, and **TYPE** of plan you want to review, using the table below.

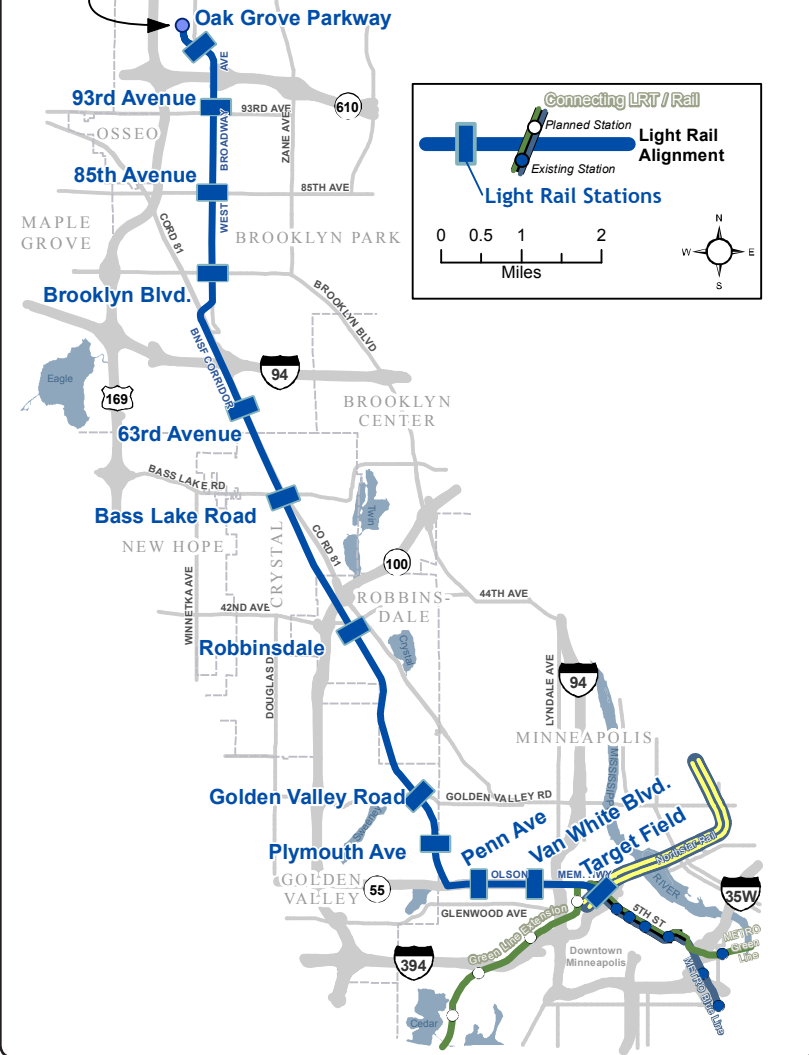
Components	Plan Type	Discipline Code	Type Code
Legend & Abbreviations	N/A	GEN	NTS
Sheet layout index	Existing Conditions Plan: Overhead View Track Plan: Overhead View Roadway Plan: Overhead View	EXCON TRACK CIV	IDX
Existing Roadway Conditions	Existing Conditions Plan: Overhead View	EXCON	PLN
Tracks Stations	Track Plan & Profile: Overhead View	TRK	PPFL
Roads and turn lanes Sidewalks and crosswalks Curbs and gutters Bus stops On-street parking Traffic signals	Roadway Plan: Overhead View	CIV	PPFL
Sidewalk and trail width Track location Stations	Typical Section: Cross-cut View	TRK CIV	TYP

How to Read the Design Plans (continued)

METRO Blue Line Extension (Bottineau LRT)

December 2015

Operation and Maintenance Facility (OMF)



Step 3: Use the **INDEX** at the beginning of each Discipline to find the Sheet Number of the page covering the location you want to review.

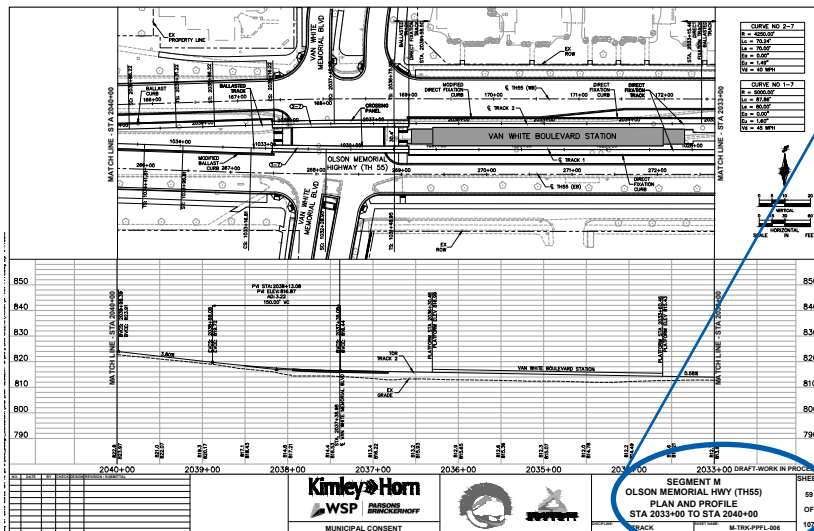
Step 4: Go to the **PAGE** that contains the information you want to review.

For example, to see information about the proposed Van White Boulevard Station, you would want to find the following page:

Segment (Step 1) M
 Discipline (Step 2) TRK
 Type (Step 2) PPFL
 Sheet Number (Step 3) 006

The information you want to review is found on the page marked:

M-TRK-PPFL-006



F00	2033+00 DRAFT-WORK IN PROGRESS
SEGMENT M OLSON MEMORIAL HWY (TH55) PLAN AND PROFILE STA 2033+00 TO STA 2040+00	
TRACK	SHEET NAME: M-TRK-PPFL-006

Printed copies of the full preliminary design plans will be available for public review at the following locations starting December 16, 2015:

Complete Plan Sets (all cities)

Minneapolis Central Library, 300 Nicollet Mall
(second floor), Minneapolis

MnDOT Transportation Library, 395 John Ireland Blvd.,
St. Paul

Blue Line Extension Project Office, 5514 West Broadway,
Suite 200, Crystal

Metropolitan Council Library, 390 N Robert St.,
St. Paul

Minnesota Legislative Library, 100 Rev. Dr. Martin Luther
King Jr. Blvd., St. Paul

North Regional Library, 1315 Lowry Avenue N,
Minneapolis

Brookdale Library, 6125 Shingle Creek Parkway,
Brooklyn Center

Brooklyn Park Plans

Brooklyn Park City Hall, 5200 85th Ave. N

Brooklyn Park Library, 8600 Zane Ave. N

Crystal Plans

Crystal City Hall, 4141 Douglas Dr. N

Rockford Road Library, 6401 42nd Ave. N

Robbinsdale Plans

Robbinsdale City Hall, 4100 Lakeview Ave. N

Rockford Road Library, 6401 42nd Ave. N, Crystal

Golden Valley City Hall, 7800 Golden Valley Rd.

Golden Valley Library, 830 Winnetka Ave. N
(Closed until Jan. 23, 2016)

Golden Valley Plans

Golden Valley City Hall, 7800 Golden Valley Rd.

Golden Valley Library, 830 Winnetka Ave. N
(Closed until Jan. 23, 2016)

Brookview Community Center, 200 Brookview Parkway,
Golden Valley

Minneapolis City Hall, City Engineer's Office, Room 203,
350 S 5th St.

Minneapolis Park and Recreation Board,
2117 West River Rd.

Minneapolis Plans

Minneapolis City Hall, City Engineer's Office, Room 203,
350 S 5th St.

Sumner Library, 611 Van White Memorial Boulevard

Minneapolis Park and Recreation Board,
2117 West River Rd.

All design plans can be downloaded from
the Metropolitan Council's METRO Blue Line
Extension Project website:

www.BlueLineExt.org

Submit written comments focused on the technical
details of the design plans to your city, county and
Metropolitan Council contacts listed below:

Hennepin County:

Brent Rusco, Senior Project Manager
Hennepin County Community Works
5514 West Broadway, Suite 200, Crystal MN 55428
brent.rusco@hennepin.us

City of Brooklyn Park:

Emily Carr, Development Project Coordinator
5200 85th Ave. N, Brooklyn Park, MN 55443
emily.carr@brooklynpark.org

City of Crystal:

John Sutter, Community Development Director
4141 Douglas Dr. N, Crystal, MN 55422
john.sutter@crystalmn.gov

City of Robbinsdale:

Marcia Glick, City Manager
4100 Lakeview Ave. N, Robbinsdale, MN 55422
mglick@ci.robbinsdale.mn.us

City of Golden Valley:

Jason Zimmerman, Planning Manager
7800 Golden Valley Rd., Golden Valley, MN 55427
jzimmerman@goldenvalleymn.gov

City of Minneapolis:

Don Pflaum, Transportation Planner
309 2nd Ave. S, Room 300, Minneapolis MN 55401
donald.pflaum@minneapolismn.gov

Metropolitan Council:

David Davies, Community Outreach Coordinator
METRO Blue Line Extension Project Office
5514 W Broadway Ave., Suite 200, Crystal, MN 55428
david.davies@metrotransit.org