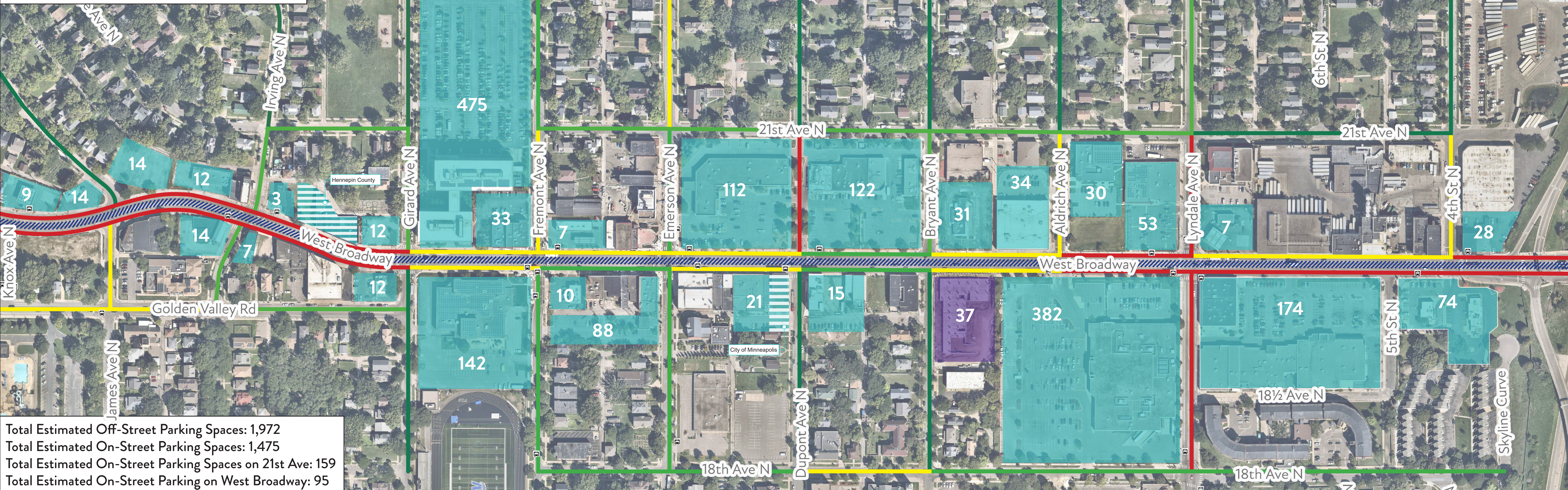


Parking Analysis Along West Broadway between Knox Ave N and 4th St N



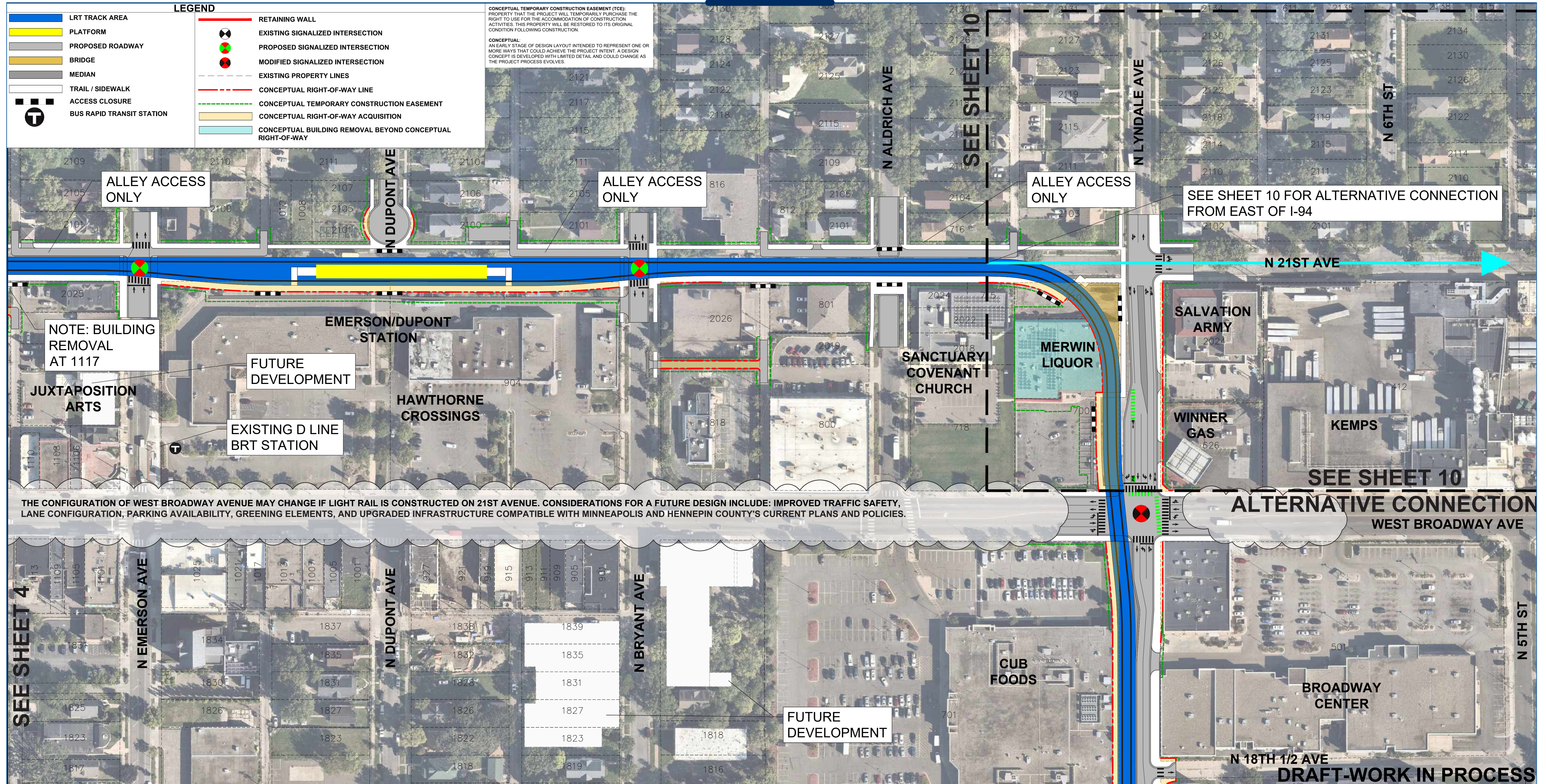
Total Estimated Off-Street Parking Spaces: 1,972
 Total Estimated On-Street Parking Spaces: 1,475
 Total Estimated On-Street Parking Spaces on 21st Ave: 159
 Total Estimated On-Street Parking on West Broadway: 95

	Estimated Number of Available On-Street Parking on Adjacent Streets		Type of Off-Street Parking		# Estimated Number of Off-Street Parking Spaces		03/06/2023			Kimley»Horn
	None 0 - 10	10 - 30 30+	Off-Street Parking Provided Underground Parking Provided	Estimated Number of Off-Street Parking Spaces Light Rail Route Publicly owned parcels						

CITY OF MINNEAPOLIS

LIGHT RAIL ON 21ST AVENUE - 1 STATION

18th Avenue to Emerson Avenue



METRO BLUE LINE EXTENSION



CITY OF MINNEAPOLIS

LIGHT RAIL ON 21ST AVENUE - 1 STATION

Emerson Avenue to Iliion Avenue



METRO BLUE LINE EXTENSION



CITY OF MINNEAPOLIS

LIGHT RAIL ON 21ST AVENUE - 2 STATIONS

18th Avenue to Emerson Avenue



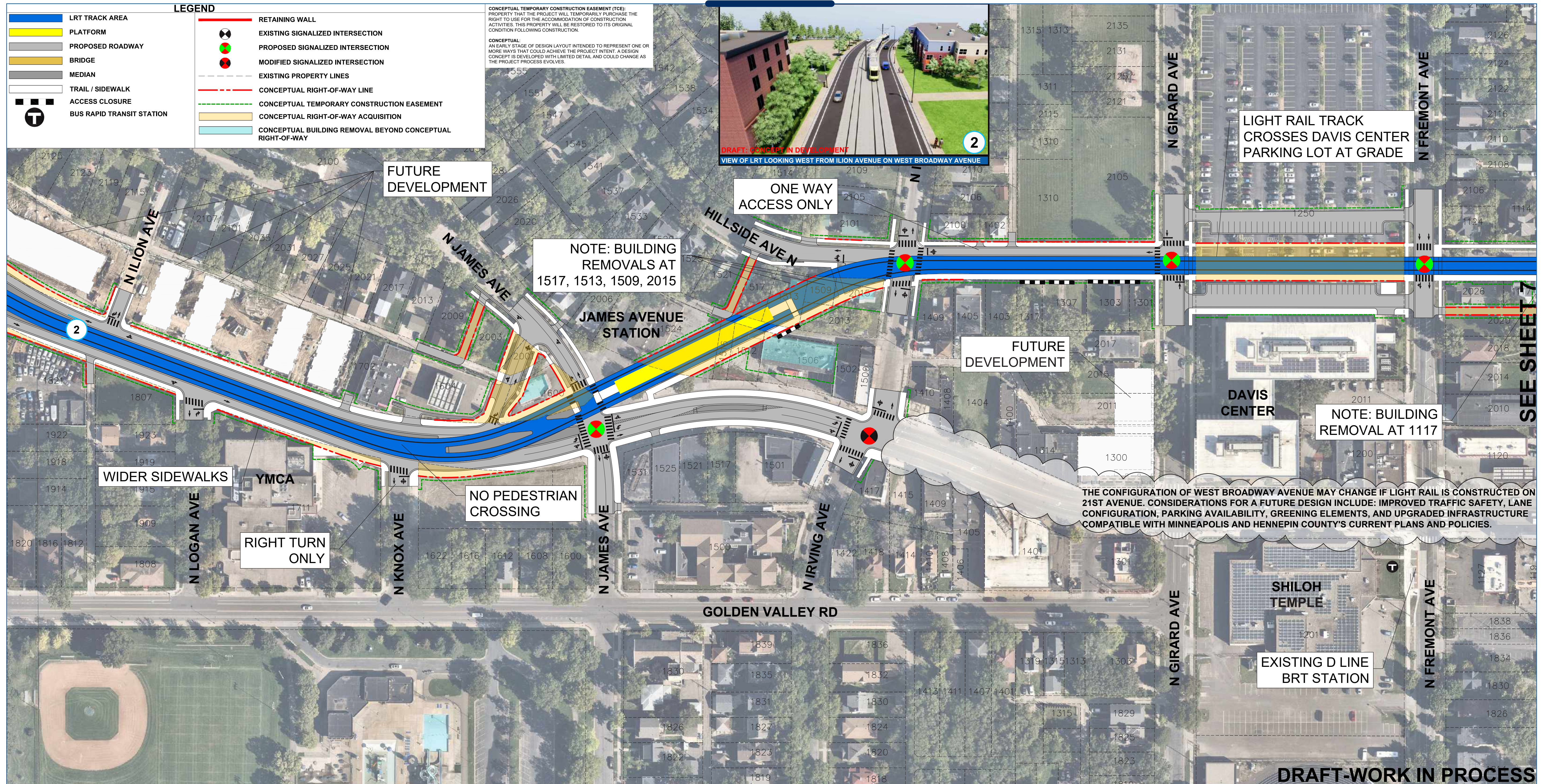
METRO BLUE LINE EXTENSION



CITY OF MINNEAPOLIS

LIGHT RAIL ON 21ST AVENUE - 2 STATIONS

Emerson Avenue to Iliion Avenue



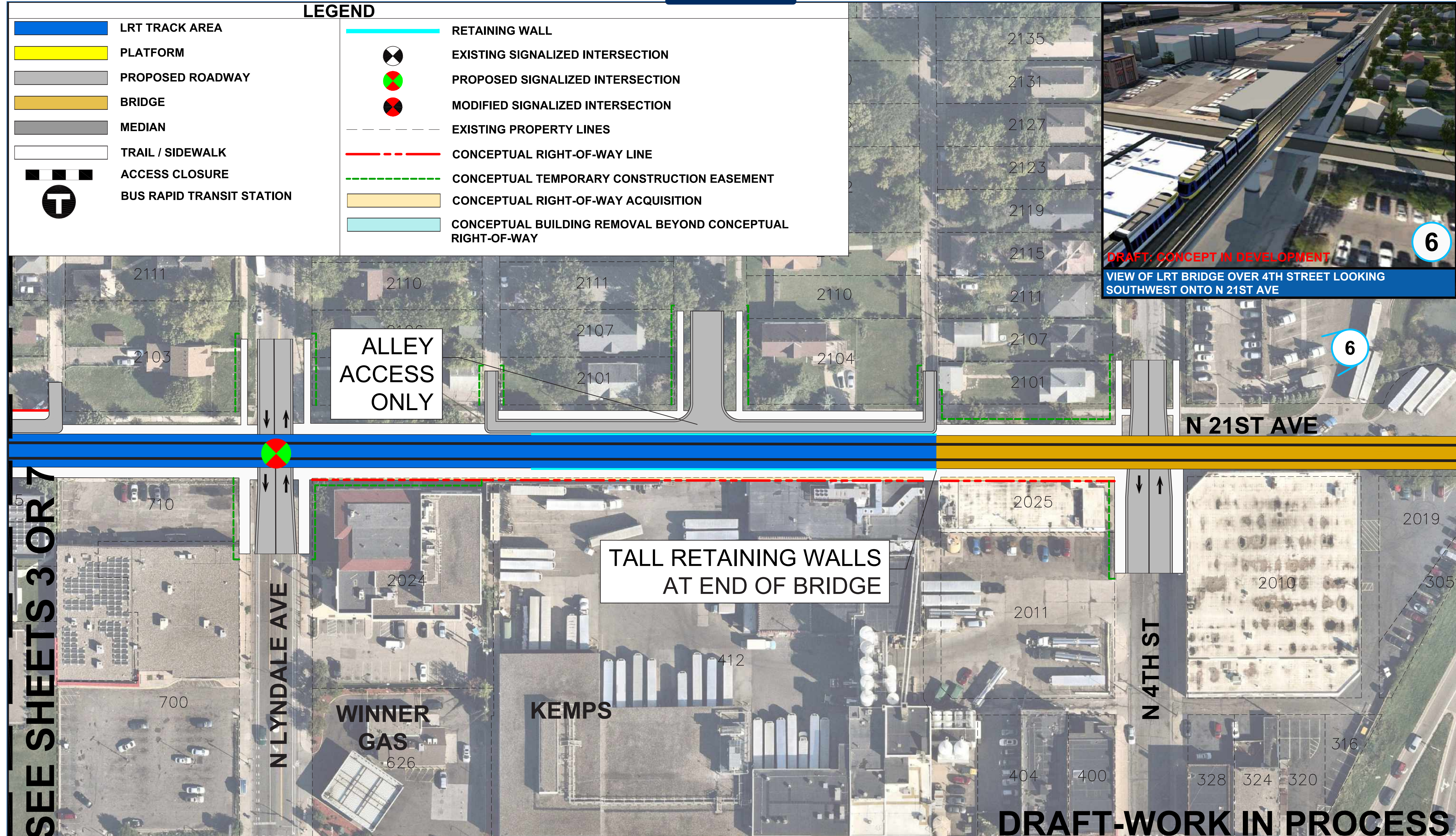
METRO BLUE LINE EXTENSION



CITY OF MINNEAPOLIS

LIGHT RAIL ON 21ST AVENUE - EAST OF I-94 CONNECTION

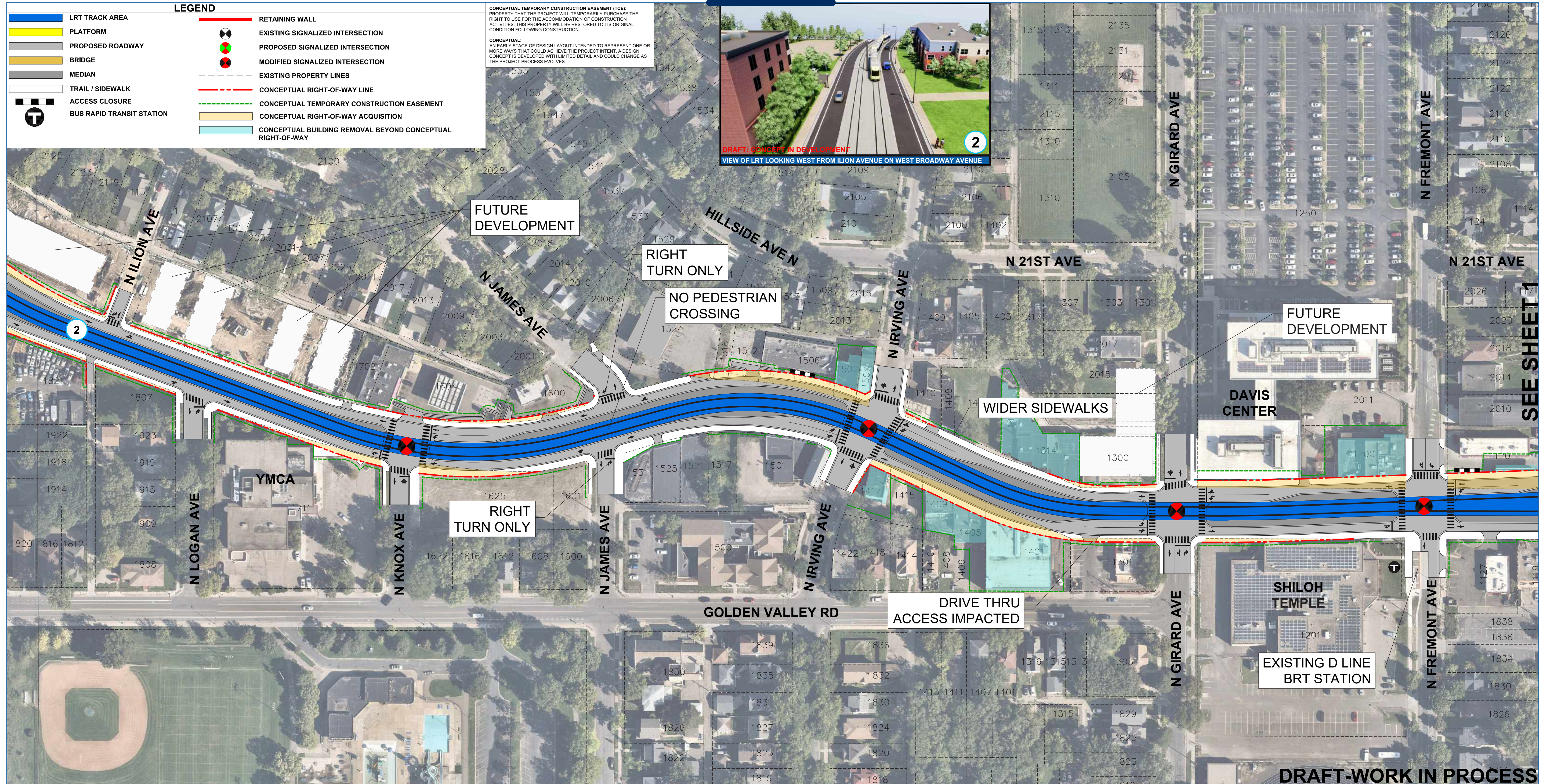
4th Street to Lyndale Avenue



CITY OF MINNEAPOLIS

LIGHT RAIL ON WEST BROADWAY - 1 STATION

Emerson Avenue to Iliion Avenue



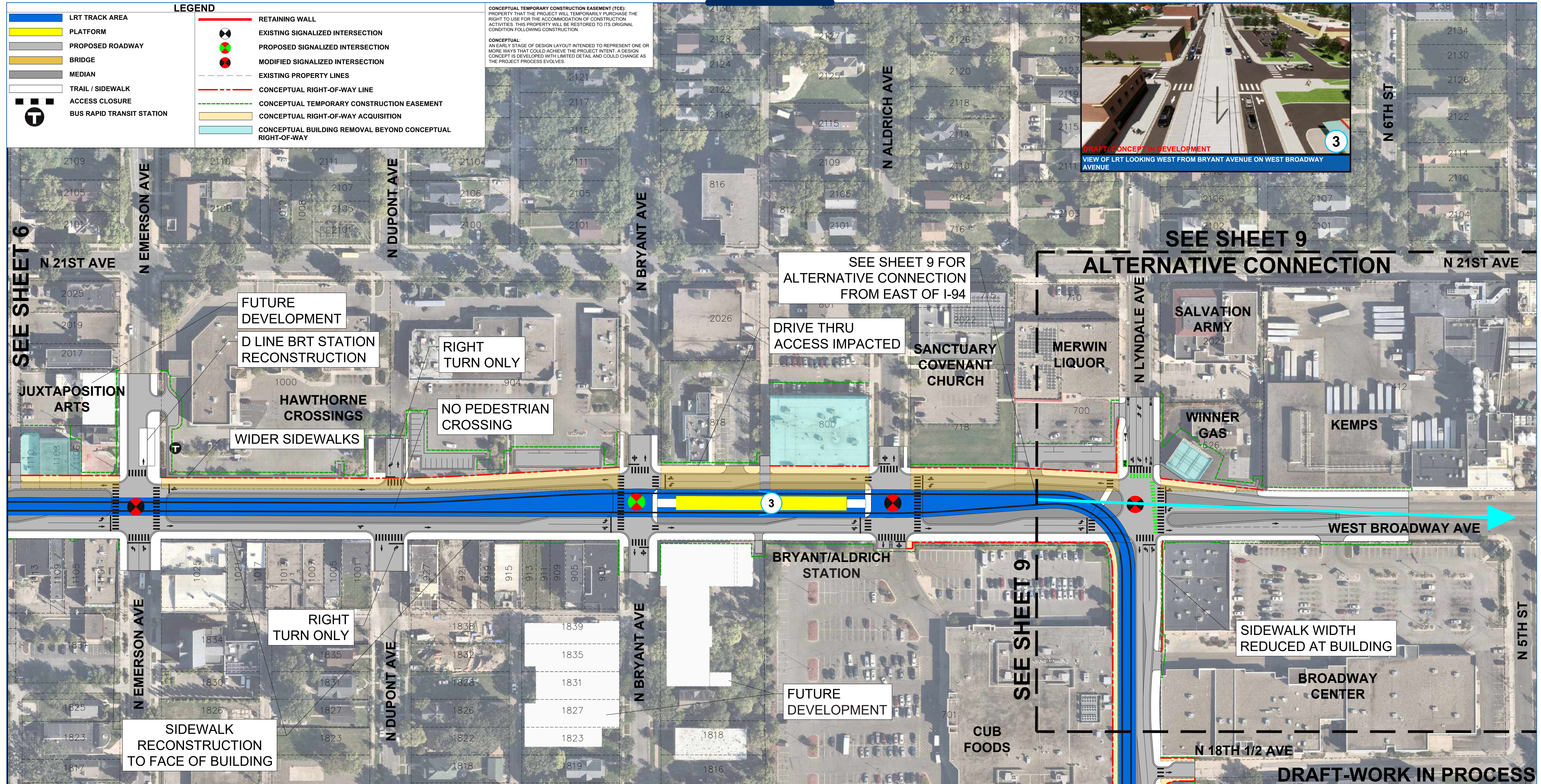
METRO BLUE LINE EXTENSION



CITY OF MINNEAPOLIS

LIGHT RAIL ON WEST BROADWAY - 2 STATIONS

18th Avenue to Emerson Avenue



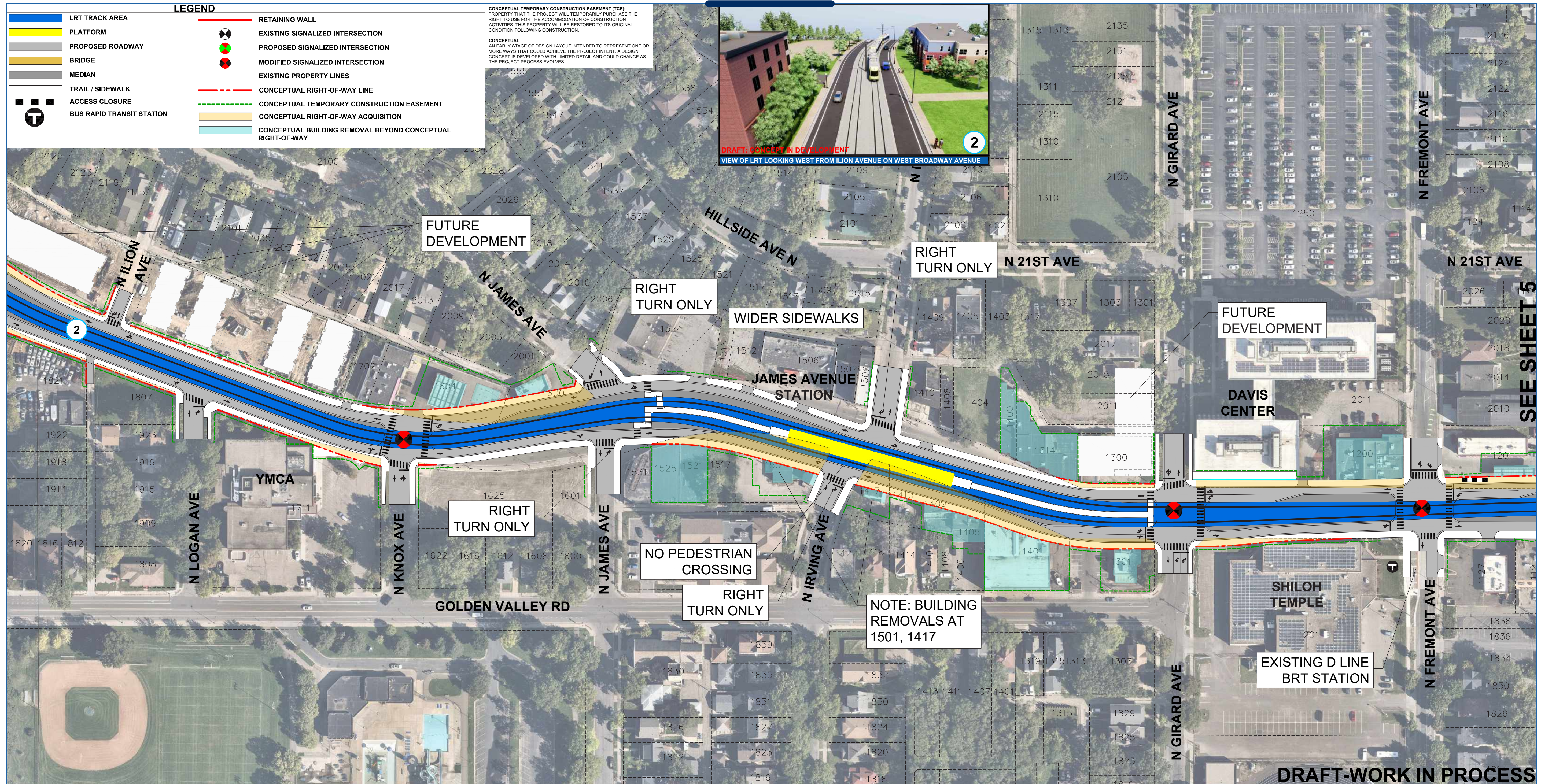
METRO BLUE LINE EXTENSION



CITY OF MINNEAPOLIS

LIGHT RAIL ON WEST BROADWAY - 2 STATIONS

Emerson Avenue to Iliion Avenue



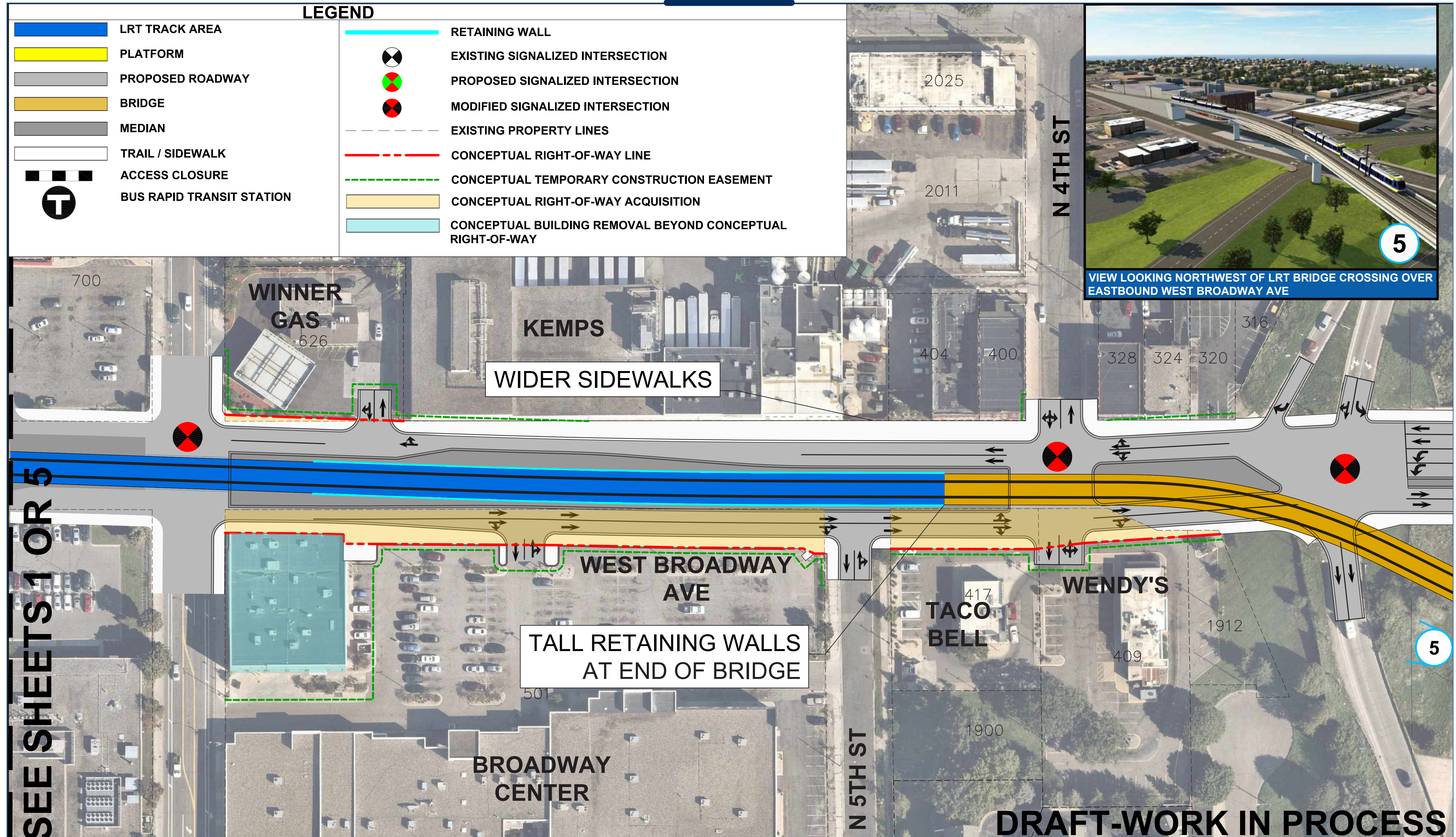
METRO BLUE LINE EXTENSION



CITY OF MINNEAPOLIS

LIGHT RAIL ON WEST BROADWAY - EAST OF I-94 CONNECTION

4th Street to Lyndale Avenue



BLUE LINE EXTENSION ROUTE

In June 2022, project sponsors (Metropolitan Council and Hennepin County) identified the final recommended route to advance into design and environmental review: West Broadway Avenue (County Road 103) in Brooklyn Park to Bottineau Boulevard (County Road 81) in Crystal and Robbinsdale to West Broadway Avenue in North Minneapolis, connecting to Target Field Station in downtown Minneapolis.

