



**Construction Update: December 17 – December 31, 2021**

**Web:** [swlrt.org](http://swlrt.org)

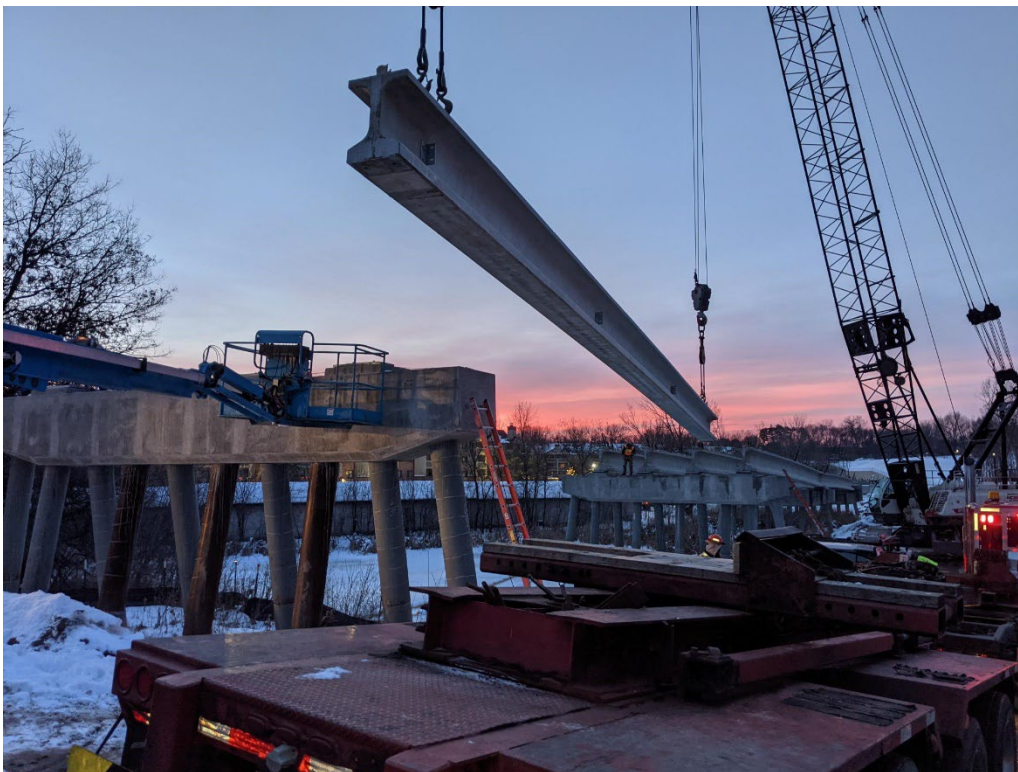
**Twitter:** [@SouthwestLRT](https://twitter.com/SouthwestLRT)

**Construction Hotline:** 612-373-3933

### **Construction Milestones:**

This week the last bridge beam was set on the western half of the project. The western portion of the project has eight of the longest bridges on the project and extends from SouthWest Station in Eden Prairie to 11<sup>th</sup> Avenue South in Hopkins. There are now six miles of beams in place in this section of the project.

### **Weekly Construction Highlight: Minnetonka-Hopkins LRT Bridge**



Crews are seen working in the early morning hours setting beams for the Minnetonka-Hopkins LRT bridge. The team set over a dozen beams in a few day-period.

[Eden Prairie](#)

**Eden Prairie Construction: Map 1 of 2**

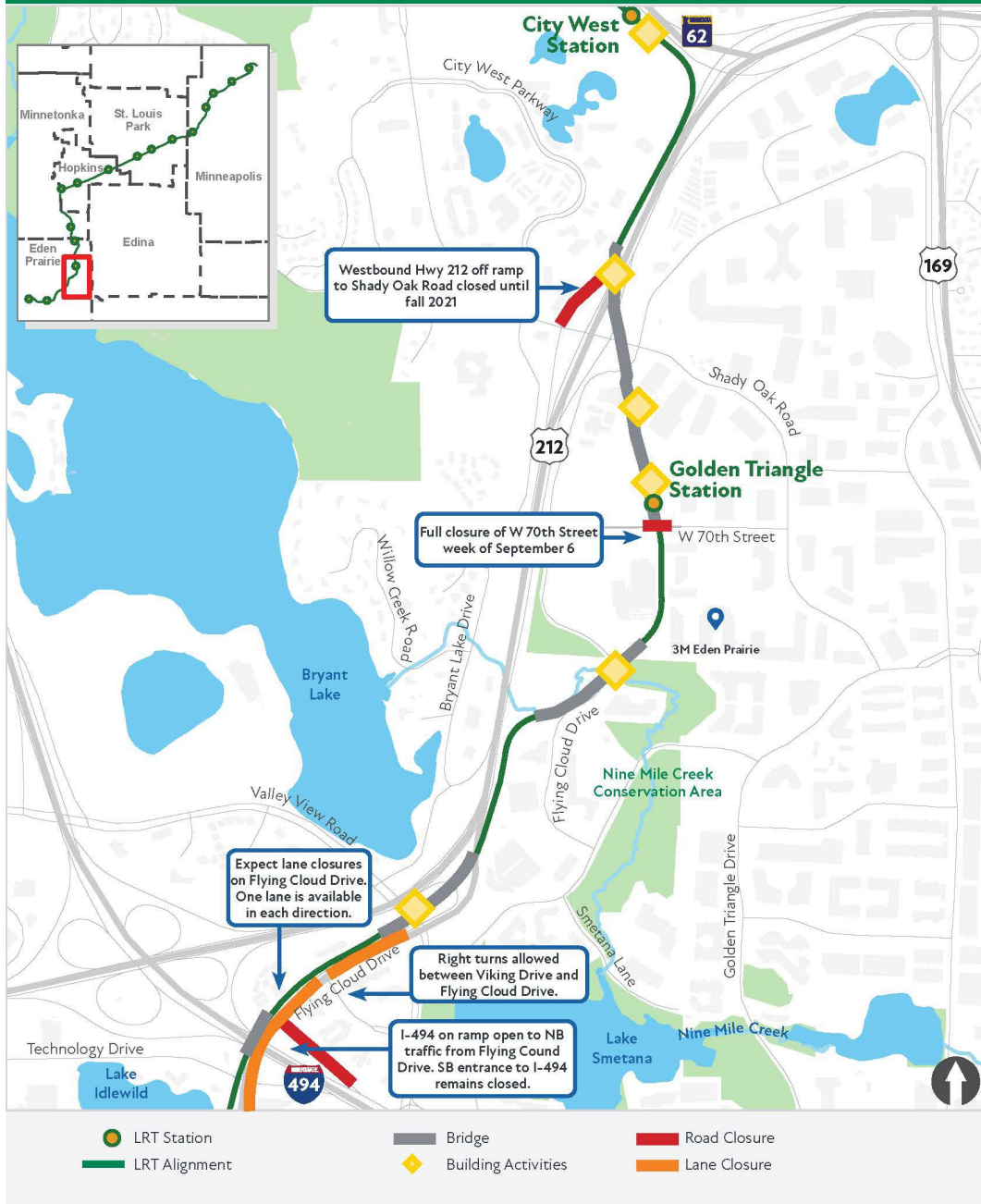


## SouthWest Station to Eden Prairie Town Center Station

**Construction Overview:** At the SouthWest Station we are constructing a new park-and-ride ramp adjacent to the existing ramp and a combined bus and LRT station. Moving east, the Prairie Center Drive LRT Bridge extends from the SouthWest Station area over Technology Drive and Prairie Center Drive. Moving east, LRT will enter the Eden Prairie Town Center Station area.

## Upcoming or Recently Completed

## Eden Prairie Construction: Map 2 of 2



## LRT Bridge at I-494 to Shady Oak Road

**Construction Overview:** In this portion of Eden Prairie, an LRT bridge will cross over I-494, parallel to Flying Cloud Drive; this bridge is almost complete. Flying Cloud Drive is being reconstructed and LRT track installed. LRT will travel on bridges over Flying Cloud Drive and Nine Mile Creek. The Golden Triangle Station is being constructed as well as an LRT bridge over Shady Oak Road and Highway 212.

## Upcoming or Recently Completed

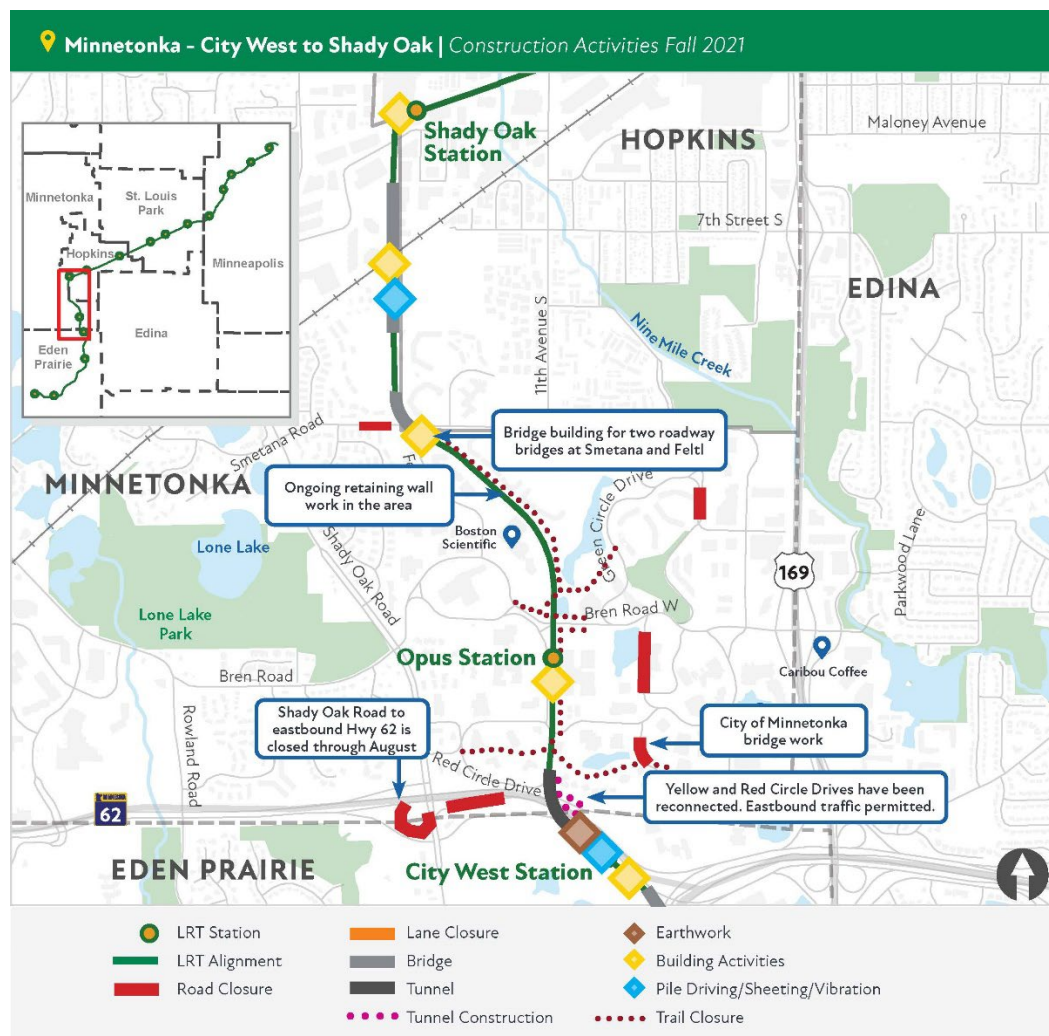


- On Wednesday, December 22, eastbound Highway 212 will close from 9:00 PM to 6:00 AM between Highway 62 and Shady Oak Road. For the Wednesday closure, traffic will be detoured to the off and on-ramps crossing Shady Oak Road. Then on Thursday, December 23, westbound Highway 212 will close 9:00 PM to 6:00 AM. For the Thursday closure, traffic will be detoured on westbound Highway 62 to Interstate 494. These closures are needed in order to complete LRT bridge work near Shady Oak Road. [See Eden Prairie detour maps.](#)

#### Ongoing:

- The far-right turn lane of the eastbound Highway 212 off-ramp to Prairie Center Drive has partially reopened. This lane will remain open throughout the winter.
- The new bike path and sidewalks on the north side of Flying Cloud Drive between Viking Drive and Town Center Place remain closed to the public.
- The westbound Highway 212 off-ramp to Shady Oak Road will remain closed into the winter season.

### Minnetonka Construction: Map 1 of 1



## **City West Station in Eden Prairie to Shady Oak Station in Hopkins**

*Construction Overview:* The City West Station area continues with preparation work for retaining walls. Major elements in this segment include an LRT tunnel under Highway 62, the Opus Station, many large retaining walls, the Smetana/Feltl roadway bridges over LRT and the Hopkins/Minnetonka LRT Bridge ending at the Shady Oak Road Station.

### ***Upcoming or Recently Completed***

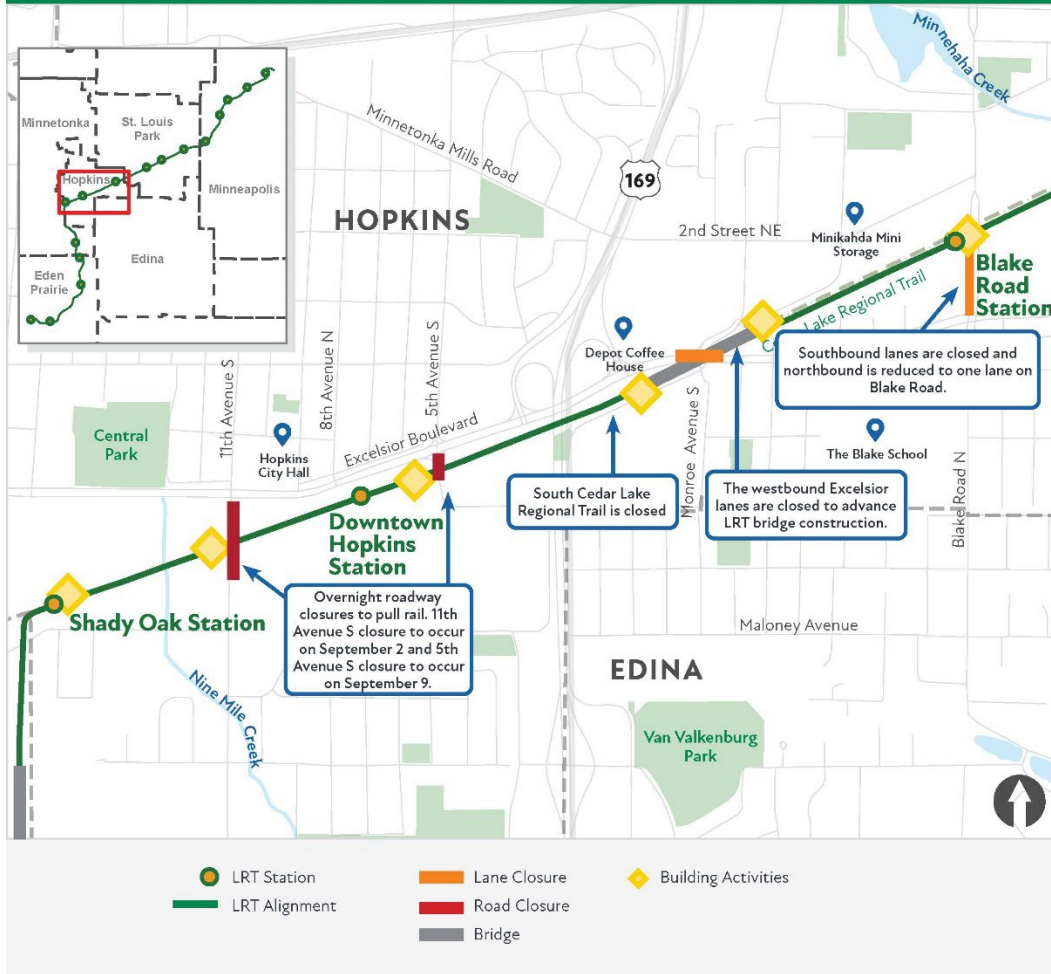
- Red Circle Drive from Shady Oak Road is now open to two-lane traffic along Highway 62.
- Bren Road West is open to two-lane traffic where it crosses the LRT corridor.

### ***Ongoing:***

- Another portion of Red Circle Drive remains closed to westbound traffic near the Yellow Brick Road Preschool as the second phase of the nearby pedestrian underpass construction continues. Drivers exiting Opus Park along Bren Road East can access Red Circle Drive and Shady Oak Road. Yellow Circle Drive is configured as a two-way road during this phase of construction to accommodate through traffic and local businesses. [See Minnetonka detour maps.](#)
- The left lane on Green Circle Drive near the Bren Road West intersection is closed until spring 2022.
- Feltl Road is closed at Smetana Road through Summer 2022. [See Minnetonka detour maps.](#)
- Crews continue to work on the Minnetonka-Hopkins LRT bridge.

## **Hopkins**

### **Hopkins Construction: Map 1 of 1**



## Shady Oak Road Station to Blake Road Station

**Construction Overview:** There are three stations in Hopkins: Shady Oak Road, Downtown Hopkins and Blake Road. Major structures in Hopkins include an LRT bridge over Excelsior and a regional trail underpass at Blake Road. In addition to LRT track construction there is also freight rail and regional trail work in the area. There are multiple LRT and freight railroad crossings at roadways.

## Upcoming or Recently Completed

### Ongoing:

- Downtown Hopkins Station remains under construction through the winter.
- Retaining wall construction continues at the Blake Road trail underpass, east of the roadway.
- Work continues on the Excelsior LRT Bridge while temperatures allow for concrete work.

## St. Louis Park Construction: Map 1 of 1



## Louisiana Avenue to Beltline Boulevard

**Construction Overview:** Like in Hopkins, the project includes the construction of LRT track, freight rail track, and the regional trail. There are also three stations in St. Louis Park: Louisiana Avenue, Wooddale Avenue and Beltline Boulevard. Structures in this area include LRT and freight rail bridges over Louisiana Avenue, a connection between freight lines, a pedestrian/trail underpass east of Louisiana Avenue, freight, LRT and trail bridges over Minnehaha Creek, a regional trail underpass at Wooddale Avenue, freight, LRT and trail bridges over Highway 100 and a regional trail bridge crossing over Beltline Boulevard.

## Upcoming or Recently Completed

- The western sidewalk along Louisiana Avenue South between West Lake Street and Oxford Street is closed for the winter to advance bridge construction. Please use the sidewalk on the east side of Louisiana Avenue.
- Crews set bridge beams for the railroad bridge at the intersection of Oxford Street and Edgewood Avenue.
- Expect sheet piling activities east of Edgewood Avenue while crews advance retaining wall work.

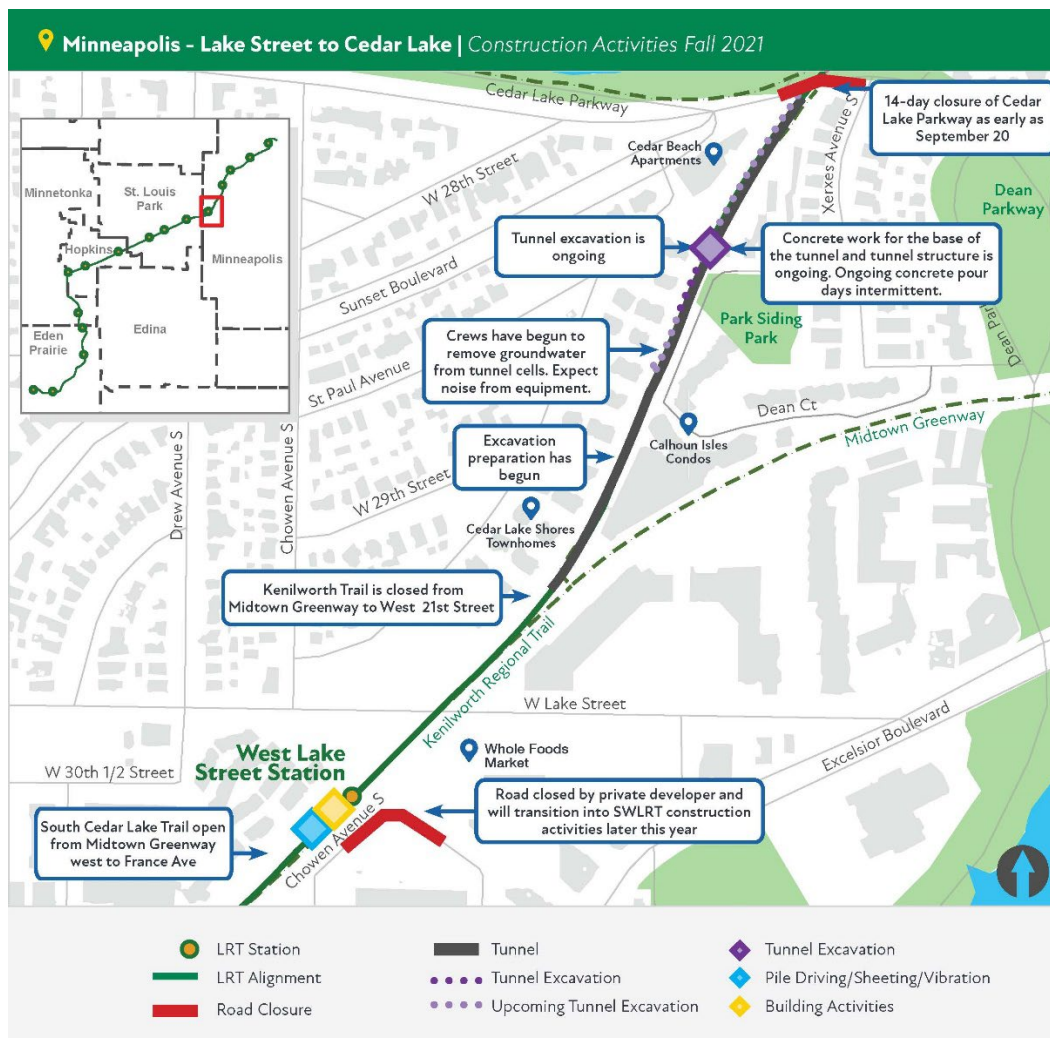


### Ongoing:

- Crews are advancing retaining wall construction near Minnehaha Creek.
- Crews continue to advance the LRT bridge over Louisiana Avenue, as well as advance the pedestrian tunnel to the Louisiana Station, as weather allows.
- The western sidewalk along Louisiana Avenue South between West Lake Street and Oxford Street is closed for the winter to advance bridge construction. Please use the sidewalk on the east side of Louisiana Avenue.

### Minneapolis

#### Minneapolis Construction: Map 1 of 5



### Chowen Avenue to Cedar Lake Parkway

**Construction Overview:** In addition to the West Lake Street Station, crews will be reconstructing the Chowen/Abbott roadway connection. The LRT tunnel is being constructed in this area, running between the West Lake Street Station and the Cedar Lake Channel. To complete work in this area there is also freight rail infrastructure and trail facilities.



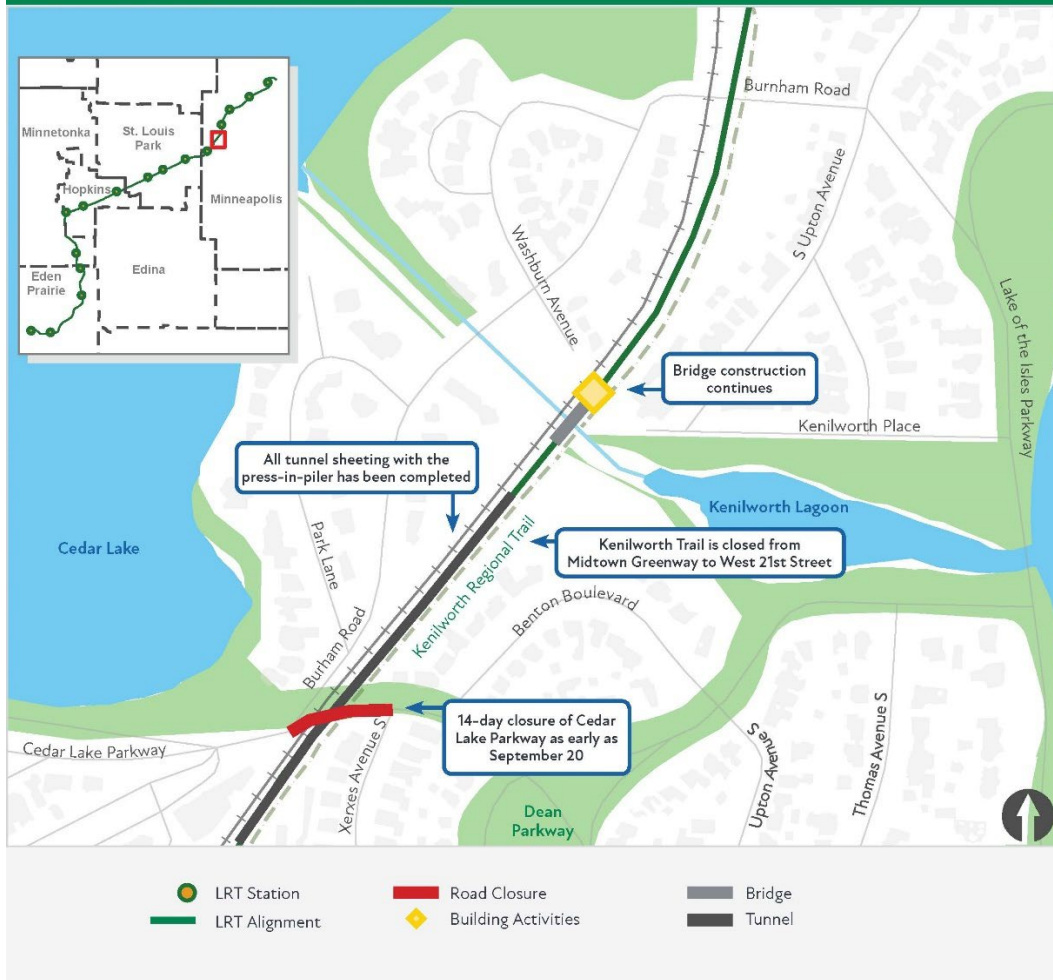
### ***Upcoming or Recently Completed***

- The temporary alignment for the Cedar Lake Trail has shifted to accommodate hauling traffic through the rail corridor.
- Sheeting removal near the West Lake Street Station continues intermittently. This work involves the use of a vibratory hammer, which causes noticeable noise and vibration for nearby residents. It is advised that residents near the West Lake Street Station secure loose items on shelves and walls during this work.
- Pumps and generators will run overnight on a periodic basis throughout winter in various parts of the construction corridor, especially at the Kenilworth LRT tunnel site. Pumps are used to manage water, and generators are used to power pumps as well as heaters to keep materials and equipment from freezing.
- The sixth tremie seal concrete pour for the Kenilworth LRT tunnel is now scheduled for Monday, December 20. Expect significant traffic to and from the site of the concrete pour near Depot Street.
- The long-term closure of Cedar Lake Parkway is currently anticipated to begin as early as Monday, January 31, 2022. This closure is needed to construct the Kenilworth LRT Tunnel that will extend under Cedar Lake Parkway. The exact timing of this closure is dependent on permit approval by the Minneapolis Park and Recreation Board. Project staff plan to announce more details about this closure and host a public virtual meeting in January to explain the work surrounding this closure.
- This month's METRO Green Line Extension Minneapolis virtual office hours will be held on Monday, December 20 from 12:00 PM to 1:00 PM. The link to this meeting can be found on the Southwest LRT [Public Involvement page](#).

### ***Ongoing:***

- Construction of the secant wall adjacent to Cedar Isles Condos continues. Activities include drilling three-foot diameter holes and pumping concrete into the holes to form columns. Noise will result primarily from equipment engines and pumps, as well as the drill rig. Vibration levels are noticeable from this work but remain within allowable limits.
- The Kenilworth LRT tunnel site is active. Concrete work and excavation activities are constant between West Lake Street and Cedar Lake Parkway. Associated equipment and truck traffic within this area and extending to the Bryn Mawr station is also ongoing.
- Extended hours from 6:00 PM to 8:00 PM are expected at the Kenilworth tunnel near Depot Street as drivers inspect the tunnel excavation below the water table. This work will continue intermittently as excavation progresses.

### **Minneapolis Construction: Map 2 of 5**

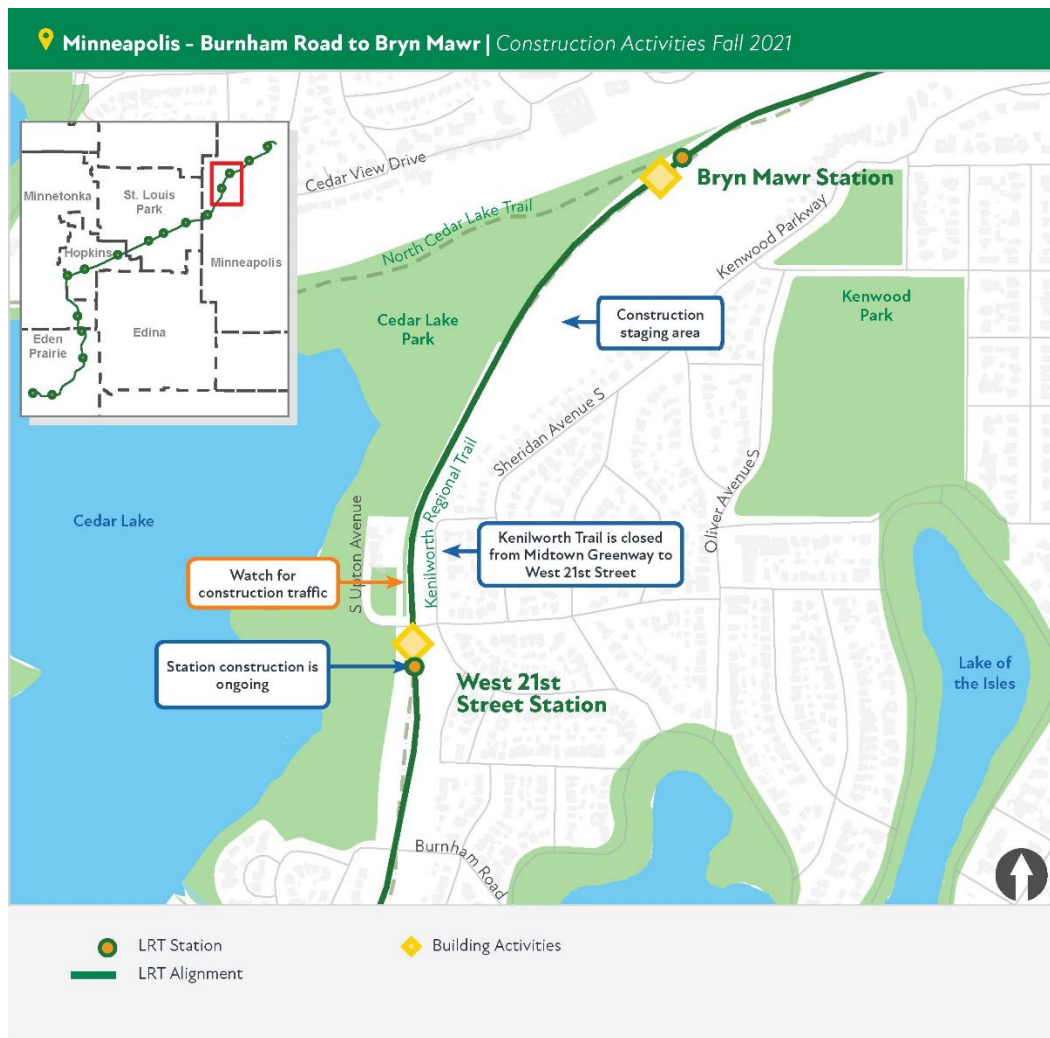


### Cedar Lake Parkway to Burnham Road

*Construction Overview:* The LRT tunnel continues in this segment. Other elements include the construction of retaining walls (complete), and freight, LRT and trail bridges over the Cedar Lake Channel.

### Ongoing

- LRT bridge construction over the Cedar Lake Channel is ongoing.



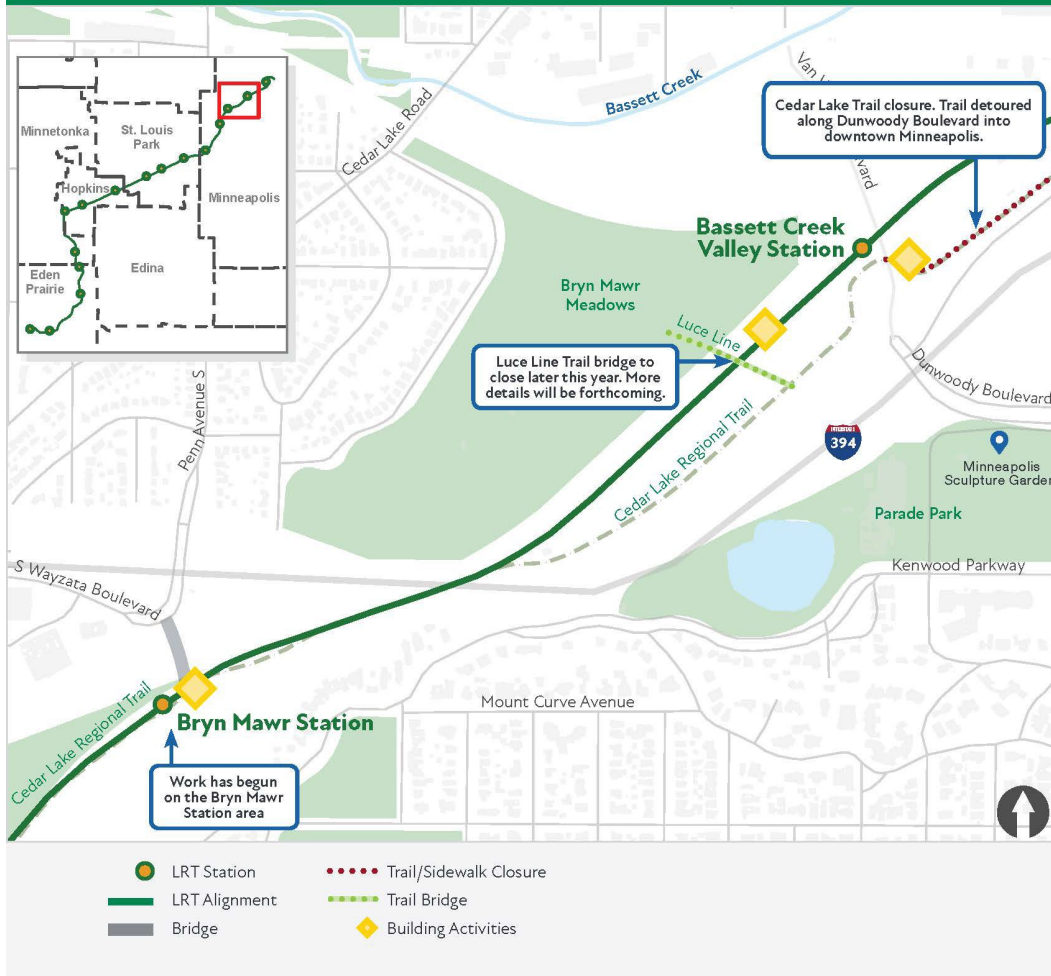
### Burnham Road to Bryn Mawr Station

**Construction Overview:** In addition to the LRT, freight rail and trail construction, this area has two stations: West 21<sup>st</sup> Street and Bryn Mawr. The Bryn Mawr Station includes a pedestrian bridge that will extend over the freight tracks from the bluffs to the station platform.

#### Current activities to expect in this area:

- Construction at Bryn Mawr Station is continuing with excavation and pile installation to construct the pedestrian bridge. Retaining wall work on the bluff south of Wayzata Boulevard and Penn Avenue is underway. Expect piling in the area.

### Minneapolis Construction: Map 4 of 5



### Bryn Mawr Station to Bassett Creek Valley Station Area

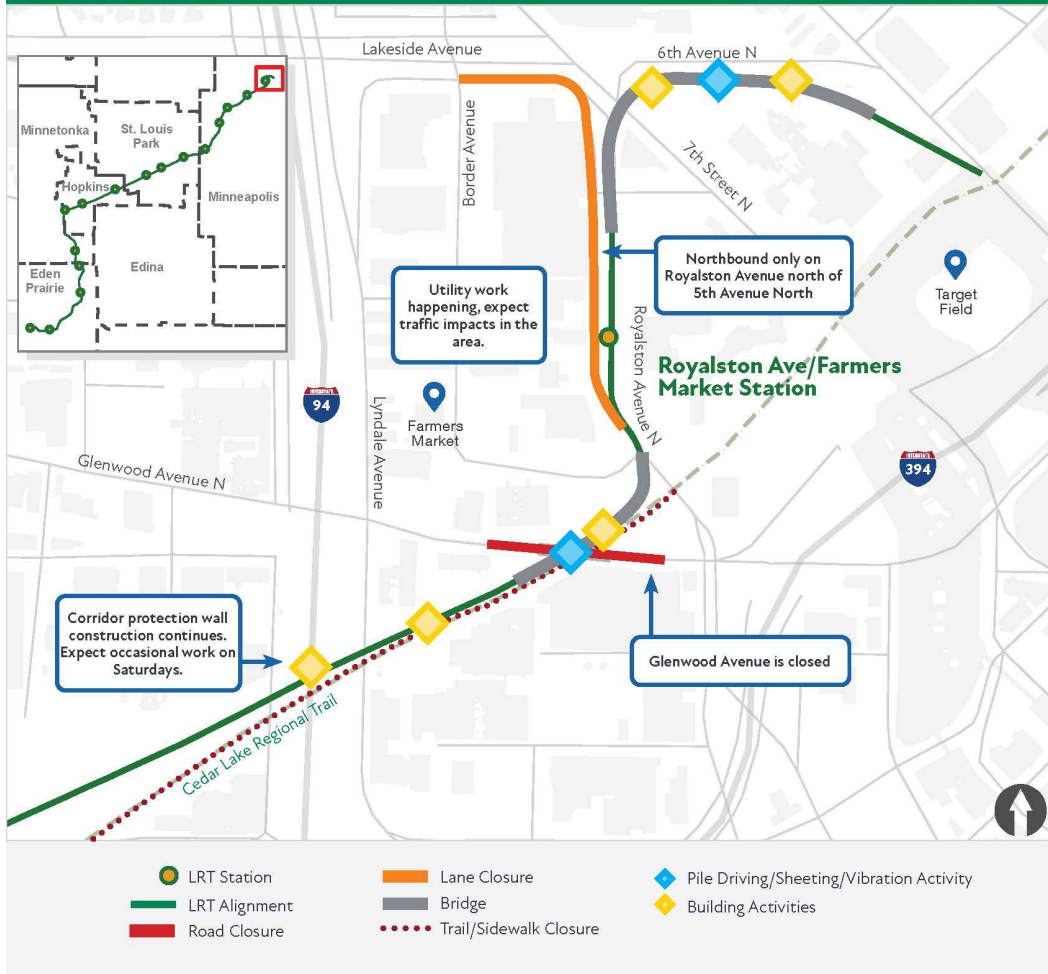
**Construction Overview:** There are two stations serving residents in this area; Bryn Mawr Station and the Bassett Creek Valley Station. In addition, area construction includes LRT track, trails and the corridor protection wall.

**Current activities to expect in this area:**

- Crews continue to build the corridor protection wall between Glenwood Avenue and Highway I-394, including work on Saturdays.

### Minneapolis Construction: Map 5 of 5





## Glenwood Avenue to Target Field Station

**Construction Overview:** LRT will cross a new Glenwood Avenue bridge at the roadway grade. To make that happen three bridges need to be constructed, freight rail shifted, and extensive retaining walls built. This area will see the development of the Royalston Avenue/Farmer's Market Station, an LRT bridge crossing over North 5<sup>th</sup> Avenue and North 7<sup>th</sup> Street and LRT connecting to the Target Field Station. The Holden/Royalston/Border roadway loop will also be reconstructed with improvements.

### Current activities to expect in this area:

- Glenwood Avenue between Lyndale Avenue North and North 12<sup>th</sup> Street remains closed. [See Minneapolis detour maps.](#)
- Bridge pier work near North 7<sup>th</sup> Street and North 6<sup>th</sup> Avenue continues. This work entails high-vibration activities for sheeting installation and pile driving. This work is expected to continue through the winter. There is a temporary lane closure on eastbound 6<sup>th</sup> Avenue.

## Regional Trails

- Various trails within the Opus area are closed as crews advance many project elements.
- The South Cedar Lake LRT Trail in Hopkins and St. Louis Park will remain closed until 2022.
- Temporary trails near Chowen Avenue and West Lake Street remain in place. For your safety and the safety of our crews, please follow signage for the temporary trail and stay clear of the work zone.
- The Kenilworth Trail will remain closed until the completion of LRT tunnel construction. The date is yet to be determined.
- The Luce Line Regional Trail bridge that crosses the BNSF rail corridor at Bryn Mawr Meadows Park is closed until fall 2022. A new bridge is being reconstructed to connect the new Bassett Creek Valley Station with the park.
- The North Cedar Lake Trail east of Dunwoody Boulevard will remain closed through 2022.

**Trail Detours:** Minnesota River Bluffs, South Cedar Lake Parkway, Kenilworth, Cedar Lake Trail [Eden Prairie](#)

**Sidewalk and Roadway Detours:** Southwest Station, I-494 Ramps at Flying Cloud Drive, Upcoming Flying Cloud near West 70<sup>th</sup>

**Minnetonka Roadway Detours:** Opus area: Yellow Circle, Red Circle, Smetana Road

**Hopkins Detours:** Excelsior Blvd & Jackson Avenue

**Minneapolis Roadway Detours:** Glenwood Avenue, Royalston Avenue

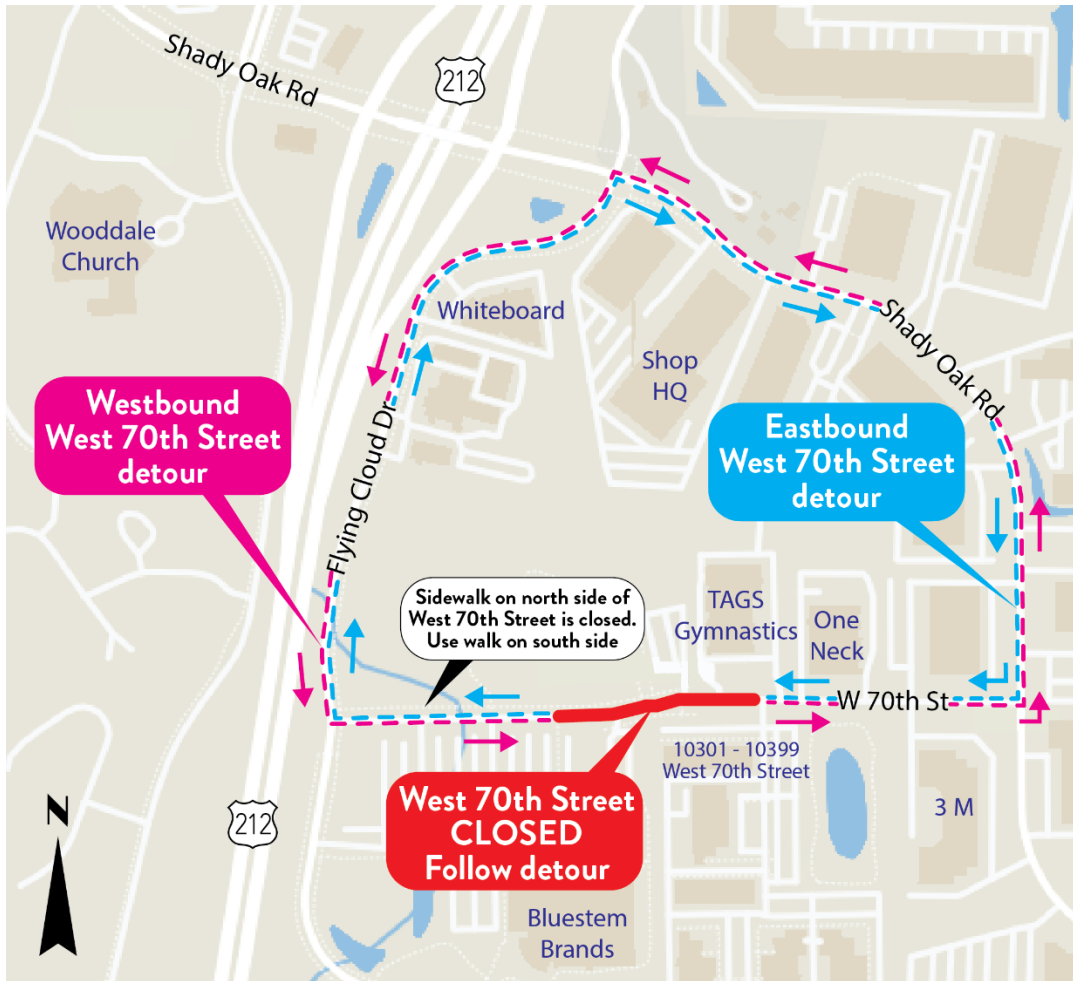
### SouthWest Transit Station Pedestrian Detour in Eden Prairie



## Flying Cloud Drive & Highway 494 Ramps in Eden Prairie



## Upcoming West 70<sup>th</sup> Street in Eden Prairie



### Opus Area Detours in Minnetonka: Red and Yellow Circles





Smetana Road in Minnetonka

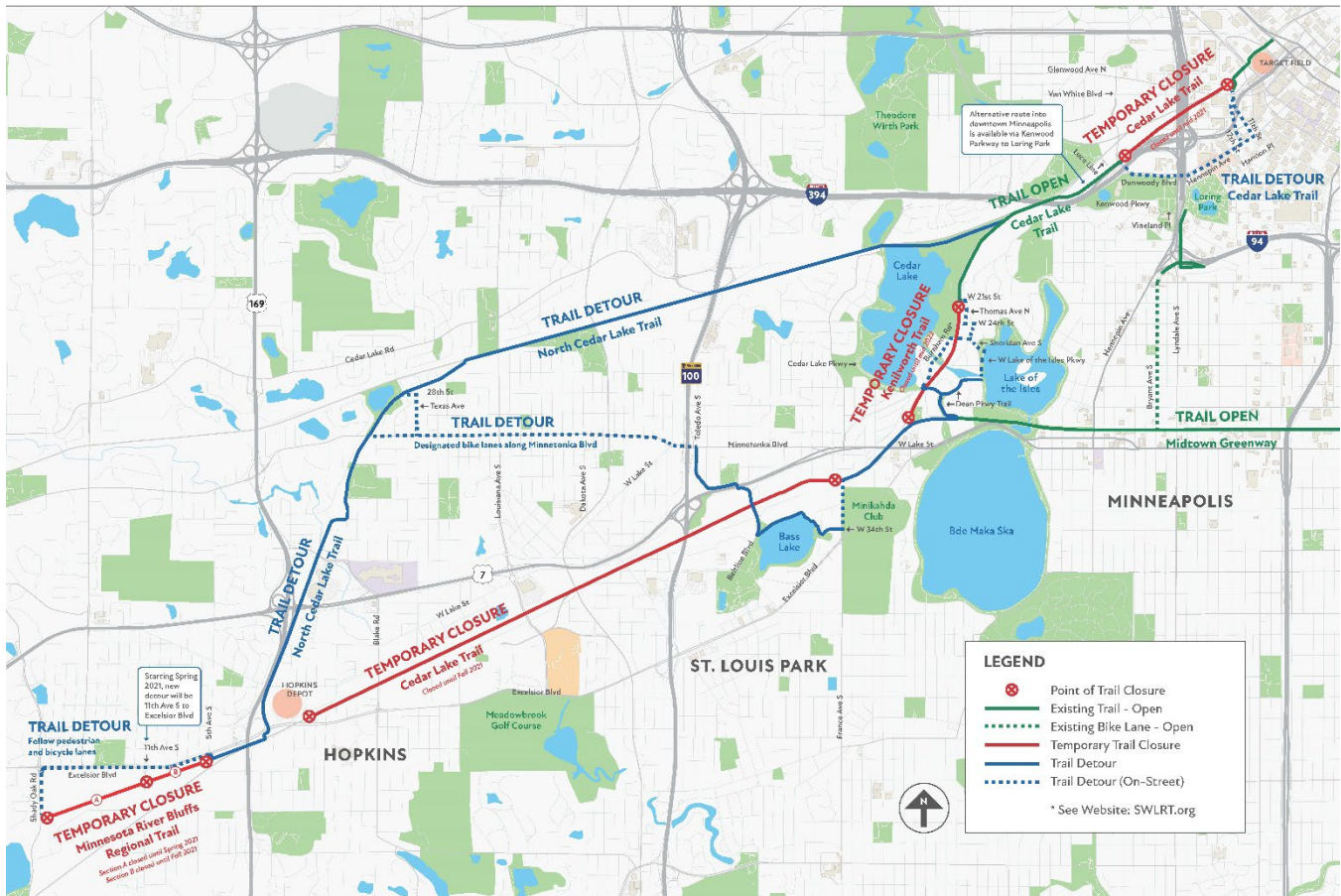


Blake Road in Hopkins



# TRAIL DETOUR

MORE DETAILS: [SWLRT.ORG](http://SWLRT.ORG)



Cedar Lake Regional Trail in Minneapolis

# CEDAR LAKE REGIONAL TRAIL

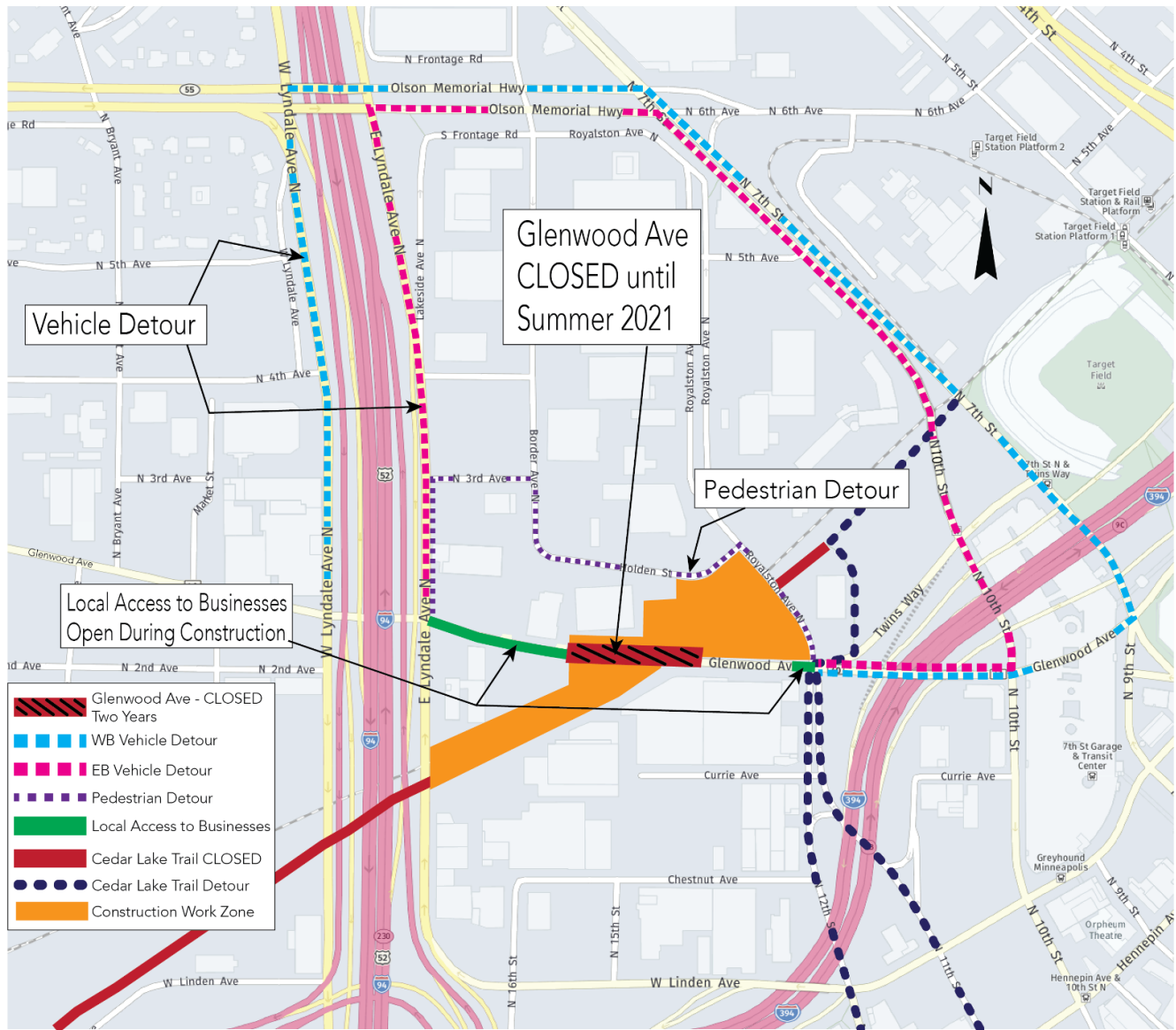
## TEMPORARY ALIGNMENT

MORE DETAILS: [SWLRT.ORG](http://SWLRT.ORG)



### Glenwood Avenue Detour in Minneapolis





**Royalston Avenue Detour in Minneapolis**

