

SOUTHWEST

Green Line LRT Extension



Minneapolis Rail Safety Meeting

Jim Alexander, P.E.

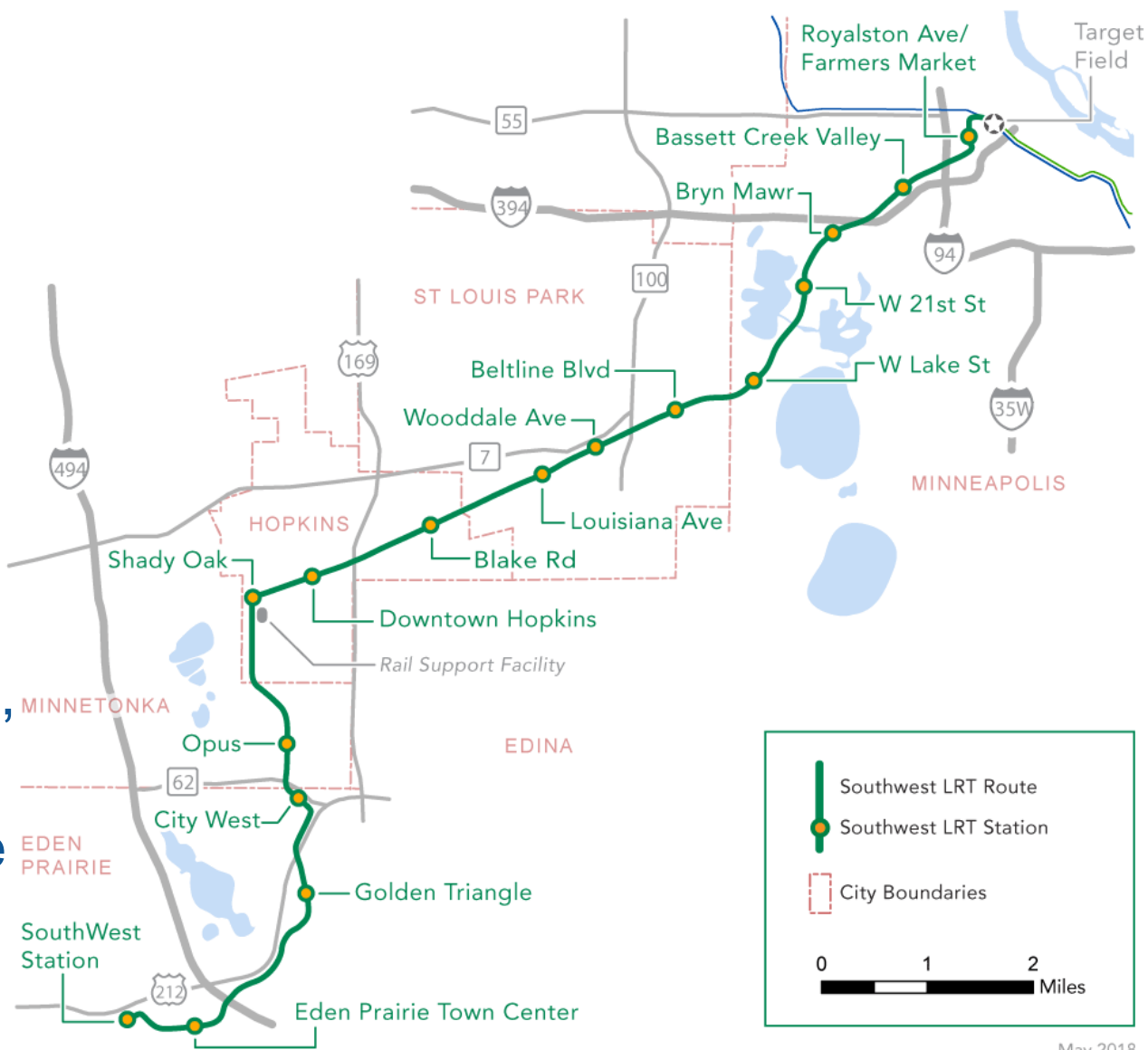
Project Director

December 2, 2021



Southwest LRT

- 14.5 miles double track
- 16 new stations
- One seat ride from Eden Prairie to Downtown St. Paul
- Direct service to Downtown Minneapolis, U of M, stadiums
- Connections to Blue Line and Northstar



May 2018

Kenilworth Freight Rail Work Improvements

- Crews upgrading the freight rail tracks near West Lake Street Station



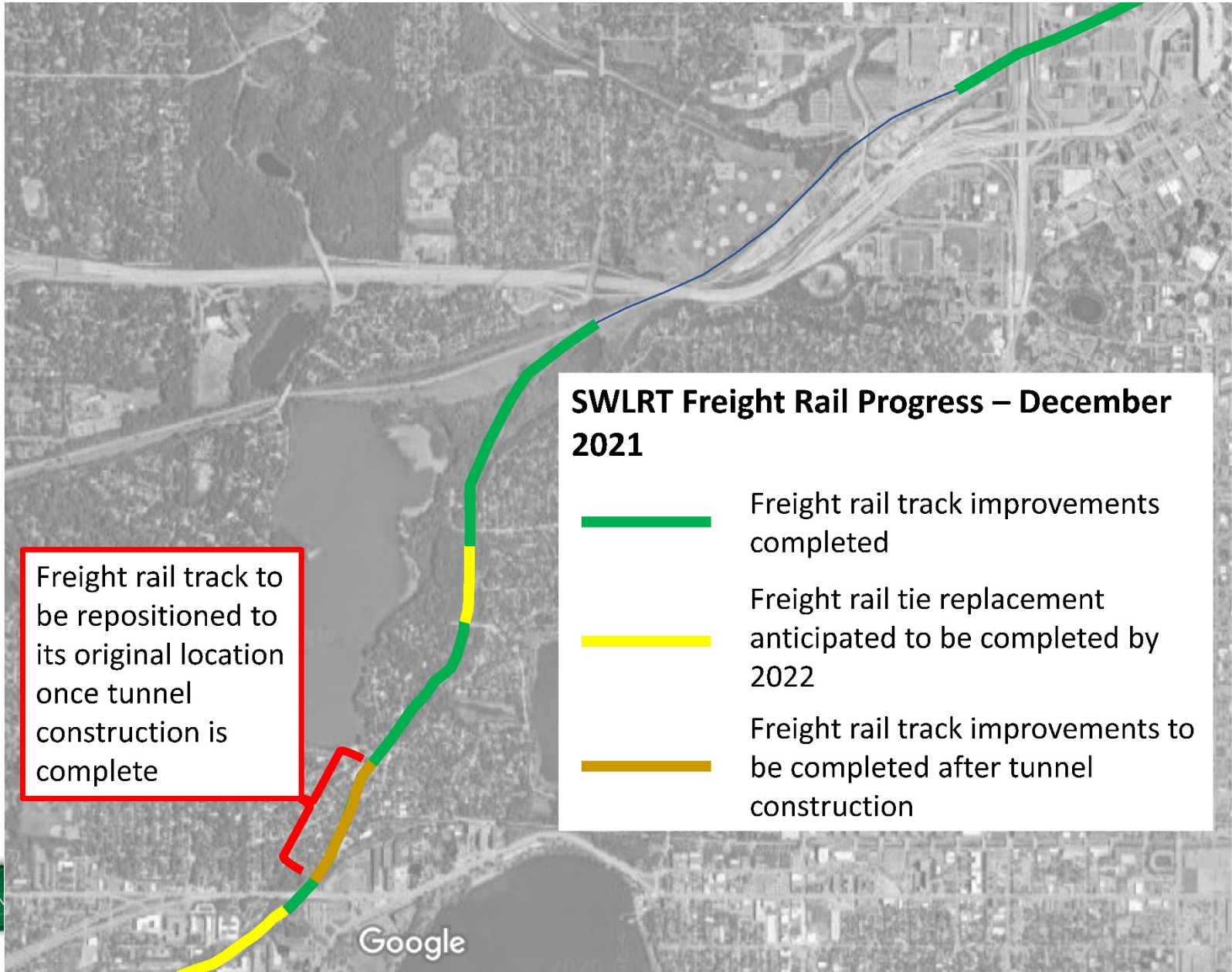
Kenilworth Freight Rail Work Improvements

Old Freight Rail Track



New Freight Rail Track

Minneapolis Freight Rail Construction Activities

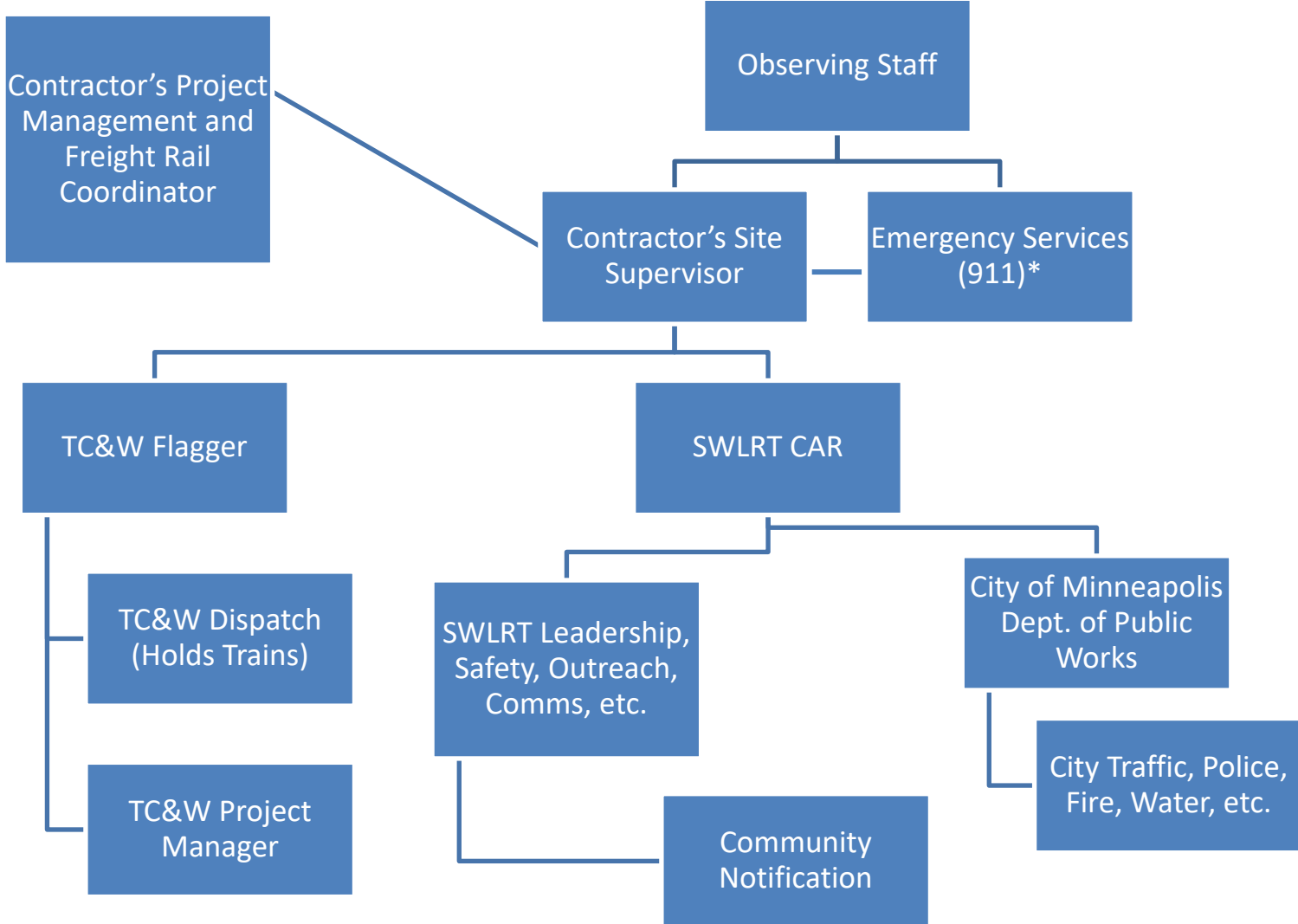


Freight Rail Monitoring and Maintenance

- Freight rail track conditions are monitored multiple times per workday
- Monitoring conforms to contract specifications, which are more conservative than FRA's track safety standards
- If a track is inspected and found to be out of compliance, work is halted; TC&W flagger is contacted immediately to stop train movement through the area until track is brought into compliance
- Rail maintenance activities are on-going to maintain serviceability



Freight Track Non-Emergency Incident Response



*911 is called depending on the severity of injuries or risk of harm to people or property

Construction Safety

- Safety training is required for all construction staff
- Construction safety is under the jurisdiction of OSHA/MNOSHA and FRA
 - Federal and Minnesota Occupational Safety and Health Administration
 - Federal Railroad Administration
 - Both agencies can conduct unannounced and announced inspections during construction
 - Both agencies have jurisdiction to issue fines for safety/rule infractions
- All construction personnel undergo jobsite safety training to identify and report safety issues
- Safety training includes recognizing when to escalate response and directly call 911

Stay Updated!

Online:

SWLRT.org

Twitter:

@SouthwestLRT

Flickr:

[flickr.com/photos/metcouncil/albums](https://www.flickr.com/photos/metcouncil/albums)

Facebook:

@MetropolitanCouncil

Instagram:

@southwest_lrt

