

# METRO Green Line Extension: Virtual Town Hall City of Eden Prairie

James Mockovciak

March 10, 2022



# Today's topics

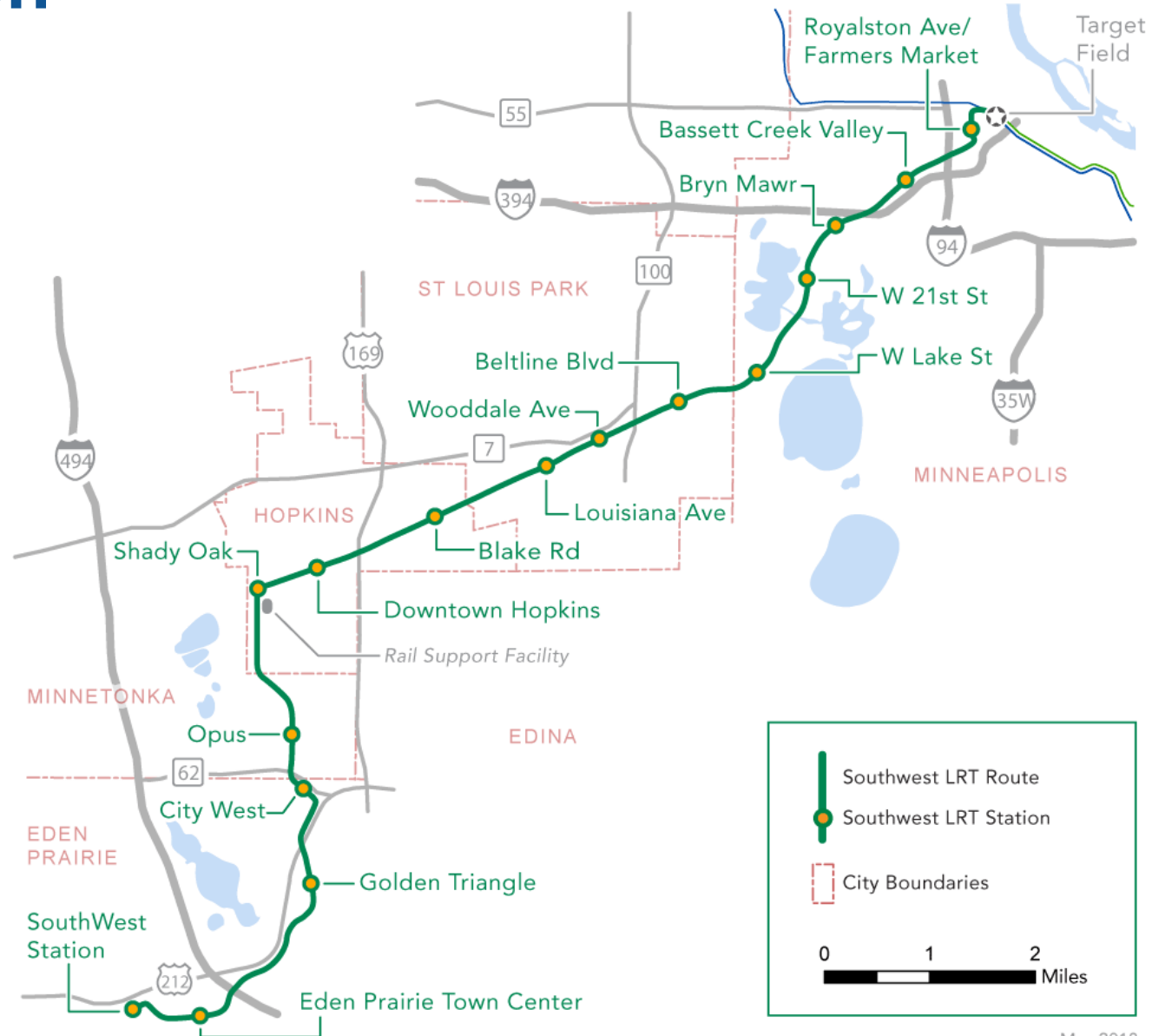
- Project Overview
- Project Update
- 2021 Construction Recap
- 2022 Construction Highlights
- Systems Contract Work
- Safety and Security
- Communications & Outreach



# Project Overview

# METRO Green Line Extension

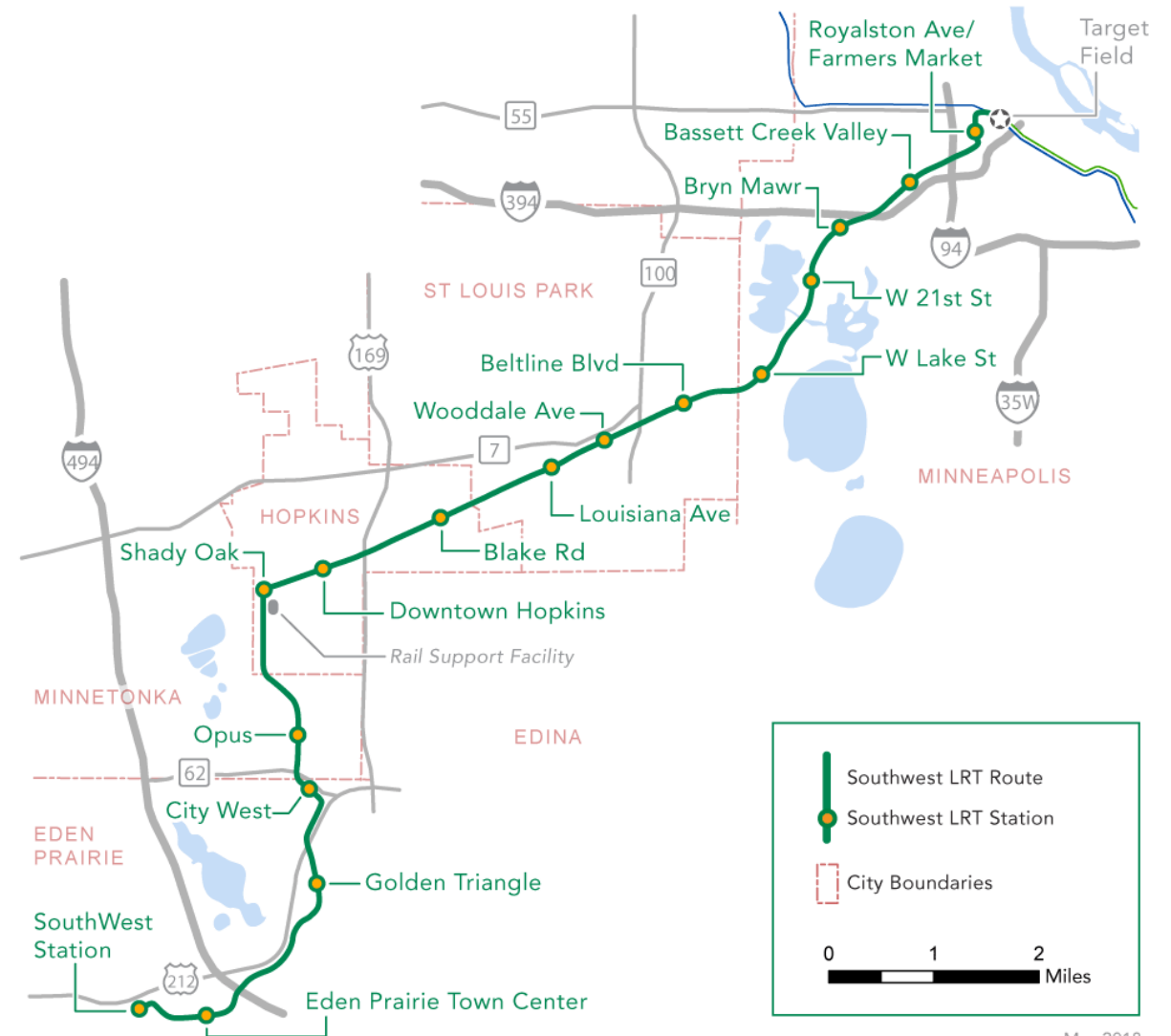
- 14.5 miles
- 16 stations
- Single seat trips to downtown Minneapolis, U of M, St. Paul
- Connections to Airport and Mall of America via Blue Line





# METRO Green Line Extension Scope

- 16 new stations
- 44 structures
  - 29 new bridges: LRT, pedestrian, roadway, freight
  - 7 existing bridges with modifications
  - 6 pedestrian tunnels
  - 2 cut and cover tunnels:
    - TH 62 582 ft., Kenilworth 2,236 ft.
- 15 at-grade LRT crossings
  - Includes 5 shared crossings w/freight rail
- 127 retaining walls
- Track: ~182,000 TF
- 7.8 mi shared LRT and freight rail corridor

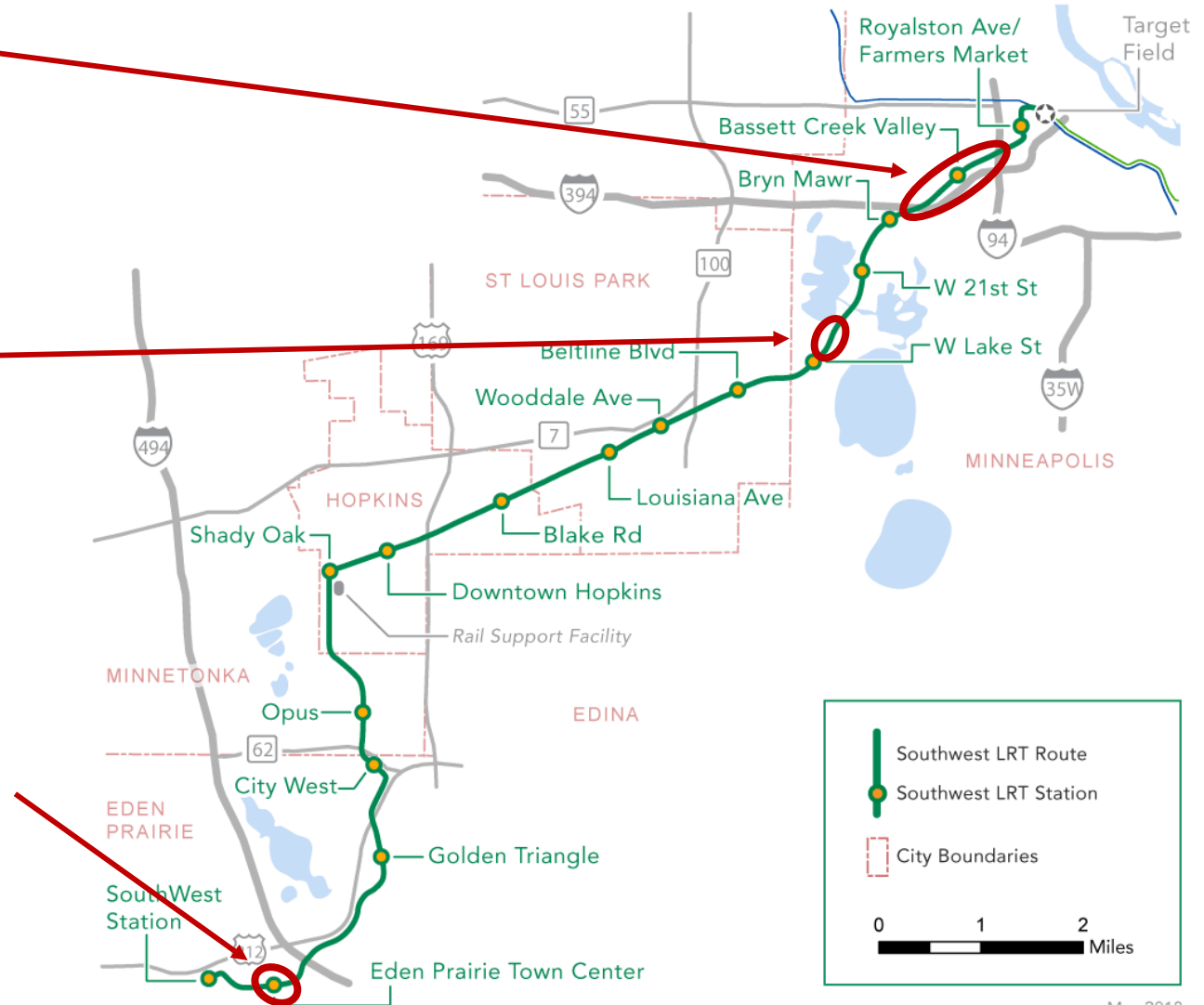


May 2018

# Project Update

# Civil construction challenges: Key issues

- **Corridor protection wall**
  - Added to the civil construction contract by change order
  - Adds significant time to the construction schedule in Minneapolis
- **Secant pile (retaining) wall**
  - Unforeseen soil conditions (settling during initial tunnel construction) necessitated an alternative construction method
  - This was a major change that sets the overall completion of civil construction due to complexity of construction involved
- **Eden Prairie Town Center Station**
  - Added to the civil construction contract by change order



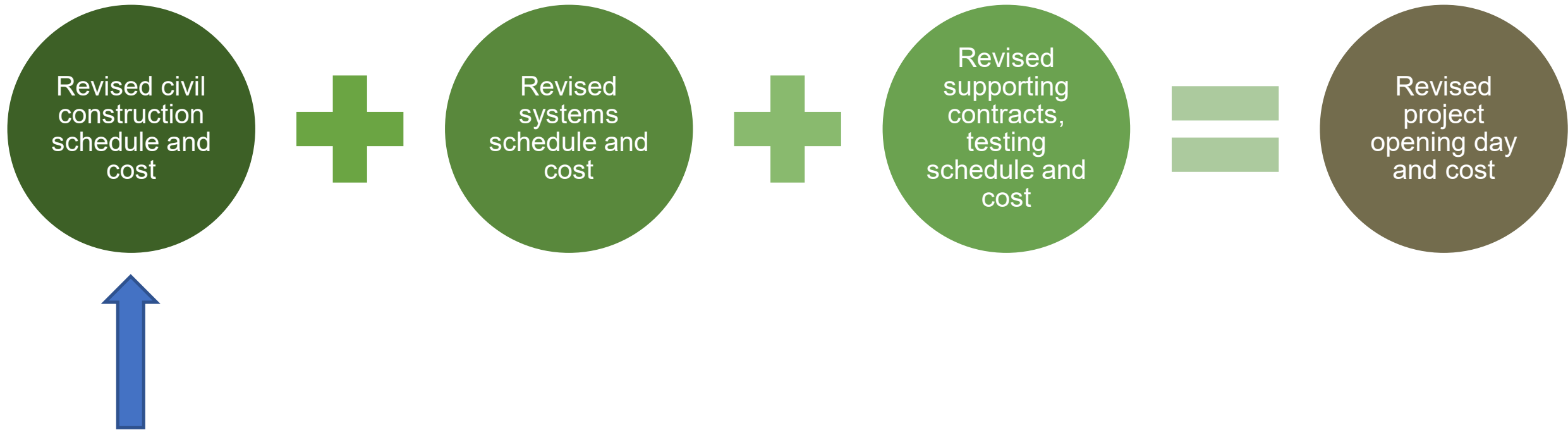
May 2018

# Civil construction cost and schedule

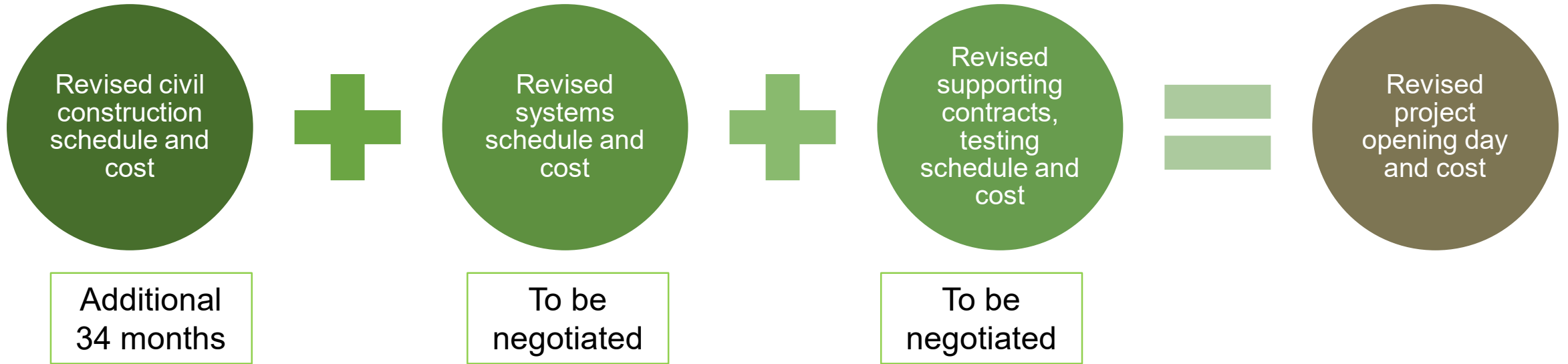


# Revised project schedule and cost process: Current step

- Taken together, these issues impact:
  - Other Green Line Extension contracts
  - Staffing, supplies, overhead, etc.
  - Overall project schedule and cost



# Project costs & schedule



- Revised project costs will be known when all agreements are finalized
- Project opening day in 2027

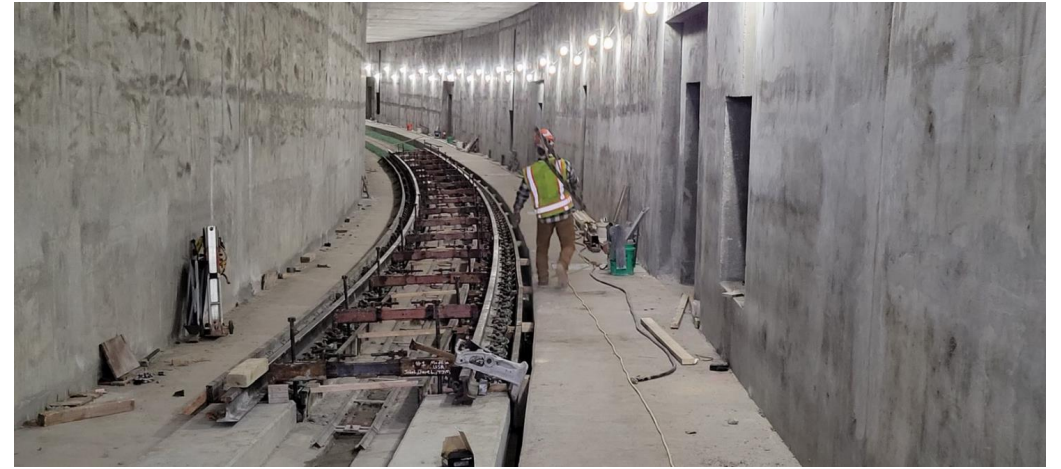
# Project budget

- The Green Line Extension has undergone cost cutting measures already, we are building a well-constructed line that meets the needs of our communities
- With the project 60% complete meaningful reductions are not available
- Additional funding will be needed to complete the project
  - We are working with partners to identify available funding solutions
  - We will not be asking city partners to contribute more
  - Stopping the project would be more costly



# How Do Costs Compare?

- Compared to our peer group of metropolitan areas including Seattle, Portland, and Houston, our costs are currently at or below their similar projects
  - Previous Green Line Extension: ~\$152 million per mile
  - Revised Green Line Extension: \$180 million to \$190 million per mile
  - Peer projects: between \$200 million and \$500 million per mile



*LRT track in the Highway 62 LRT tunnel*



*LRT track at the Downtown Hopkins Station*

# National Comparisons

LRT Project	Length in Miles	Number of Stations	Cost Per Mile
Twin Cities METRO Green Line Extension	14.5	16	\$180 - \$190 million
Pittsburg: North Shore	1.2	3	\$560 million
Seattle: U-Link	3.2	2	\$511 million
Seattle: East Line	13.9	10	\$259 million
Portland: Orange Line	7.3	10	\$243 million
Los Angeles: Expo Line Phase 2	6.6	7	\$225 million
Houston: Green Line	3.2	7	\$223 million

Source: Eno Center for Transportation, "A Blueprint for Building Transit Better"



# \$2+ Billion in Permitted & Planned Community Development

**Elevate At SouthWest Station, Eden Prairie**



**The Moline at Downtown Hopkins Station**



**Minnetonka Station at Opus Station**



**Beltline Station Development, St. Louis Park**



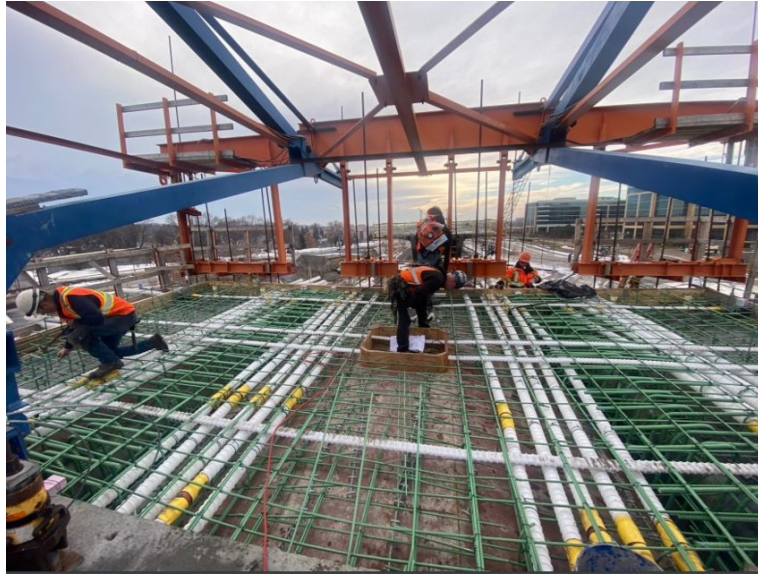
# Disadvantaged Business Enterprise

Construction Contract Description	DBE Billed to Date	DBE Percentage Achieved*
Civil: 16%	\$134.2 Million	20.9%
Systems: 12%	\$10.9 Million	16%
Franklin OMF: 15%	\$7.5 Million	19.1%
<b>OVERALL ACHIEVEMENT: 15%</b>	<b>\$152.8 Million</b>	<b>20.4%</b>

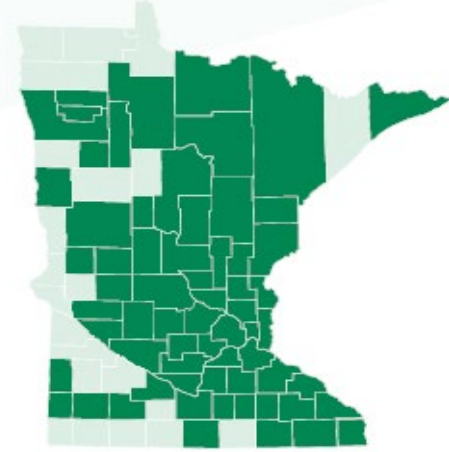
*\*As of November 30, 2021*



# Green Line Extension = Statewide Jobs



\$ **53,170,758**  
IN PAY GOING TO  
**65** of the **87** MINNESOTA COUNTIES  
SO FAR



*\*As of July 2021*



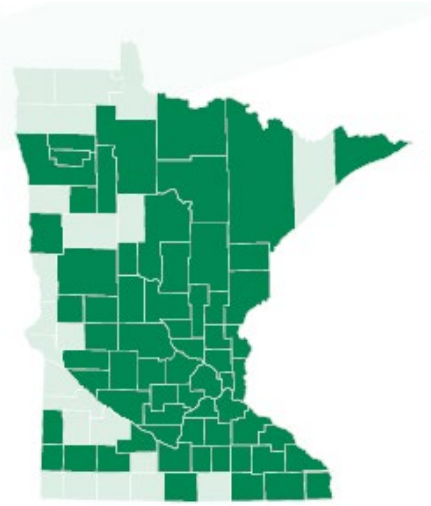


# Statewide economic benefits

- Putting people to work:
  - More than 1.8 million hours worked
  - Paychecks for Minnesotans worth more than \$53.1 million and growing
  - Employing folks from 75% of counties statewide
  - \$134 million billed by Disadvantage and Business Enterprise companies (20.9%) for civil construction activities, exceeding the goal of 16%
  - Project will support 7,500 construction and construction related jobs and \$350 million in payroll to be reinvested in communities throughout the Twin Cities and the state

**65 of 87**

**Minnesota counties have someone bringing home a Green Line Extension paycheck**



# 2021 Construction Recap



# Accomplished by end of 2021: LRT construction sequencing

✓ Done!



## Utilities

- Excavation
- Relocation / installation

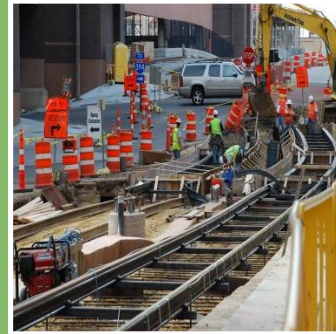
✓ Done!



## Site Prep

- Clear buildings
- Establish work zones, detours

60% Complete



## Structures, track, stations

- Track beds
- Track
- Buildings
- Roadwork
- Trails

~2% Complete



## Systems

- Overhead catenary
- Safety & security
- Ticket vending

Prior to revenue service



## Testing

- Safety
- Comms
- Operator training

Outreach & Communications

# Construction highlights: 2021

- Civil construction: 60% complete
- Under construction:
  - 25 bridges completed or underway out of 29
  - 8 tunnels underway out of 8
  - 114 retaining walls completed or under construction out of 131
- 95% of 946 private utilities completed
- 75% of nearly 1,300 public utilities completed
- Completed all 15 building demolitions
- Systems contractor mobilized and in design and procurement
- Franklin Operation & Maintenance facility modifications are nearly complete
- 26 of 27 Light Rail Vehicles delivered

# LRT stations underway

- 11 stations underway of 16
  - When complete will allow a stress-free commute from Eden Prairie to downtown Minneapolis
    - Consistent commute time, unimpacted by traffic
  - Improved connections to regional destinations such as Minneapolis Grand Rounds, Methodist Hospital, Downtown Hopkins, UnitedHealth Group's Optum corporate campus, Eden Prairie Center



*Shady Oak Station*

*Downtown Hopkins Station*





# SouthWest Station



Looking east: construction of the parking ramp, station & waiting area



Looking east: pile supports for bus loop



# SouthWest Station





# Prairie Center Drive LRT Bridge





# Prairie Center Drive LRT Bridge





# Prairie Center Drive LRT Bridge



# Eden Prairie Town Center Station





# Eden Prairie Town Center Station





# Town Center Place Road





# Valley View Road LRT Bridge





# Golden Triangle Station





# Golden Triangle Station





# TH212/Shady Oak Road LRT Bridge





# City West Station





# City West Station





# TH 62 LRT Tunnel





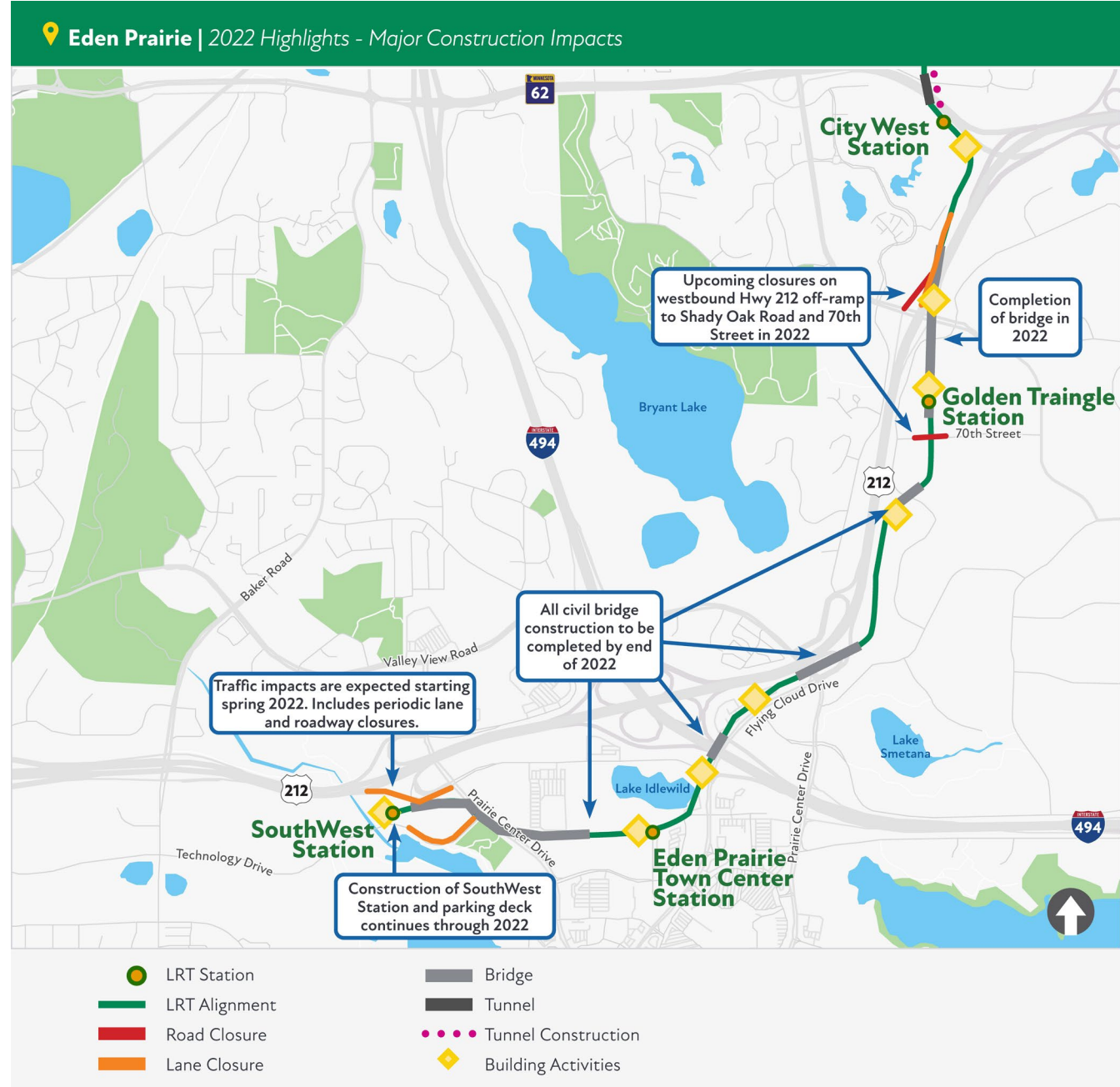
# TH 62 LRT Tunnel



# 2022 Construction Highlights



# 2022 Eden Prairie Construction Activity Map



# Eden Prairie: 2022 Construction Highlights

- Stations
  - Southwest Station: finish piling, advance station/parking ramp
  - Town Center Station: advance station construction, fixtures, track
  - Golden Triangle Station: advance station construction, fixtures, track
  - City West Station: advance station construction, fixtures, track
- Bridges
  - Prairie Center Drive LRT bridge: deck/track work, finishing details
  - I-494 LRT bridge: deck/track work, finishing details
  - Valley View Road LRT bridge: deck/track work, finishing details
  - Nine Mile Creek LRT bridge: deck/track work, finishing details
  - Highway 212/Shady Oak Rd bridge: deck/track work, finishing details
- Trackwork
  - Trackwork will continue between Valley View Bridge and City West Station



# Eden Prairie: 2022 Construction Highlights

- Traffic Impacts
  - Eastbound Highway 212 off-ramp to Prairie Center Drive will be closed for 4-8 weeks (summer)
  - West 70<sup>th</sup> Street will be closed to install track infrastructure (summer)
  - WB Hwy 212 off-ramp to Shady Oak Road will close for the season (spring)
  - LRT track crossings at Technology Drive and Viking Drive intersection with Flying Cloud Drive will experience temporary lane closures to complete trackwork
  - Periodic lane closures on Hwy 212 between Shady Oak Bridge and Hwy 62 to complete overhead bridgework



*Prairie Center Drive LRT Bridge*

# Eden Prairie: 2022 Construction Highlights

- Systems (Electrical) Work
  - Systems contractor will continue constructing foundations for Traction Power Substations (TPSS)
- Completion Milestones
  - The Prairie Center Drive, Valley View Road, Nine Mile and Shady Oak-212 LRT bridges will be substantially completed this year
  - The relocation of SouthWest Transit to the permanent indoor waiting area is expected to occur by the end of the year



*SouthWest Station, Eden Prairie*



# Systems Contract Work

# Systems Contractor

- Aldridge Parsons Joint Venture (APJV)
- -Project Team Management ≈ 25
- -Project Craft Workers ≈ 40-50
- -Subcontractors ≈ 25





# Foundation work for Traction Power Substation (TPSS)





# Finished TPPS Stations





# Inside a TPSS Station



# Safety and Security



# GLE Safety and Security



- MTPD is made up of 141 sworn full-time transit police officers, and about 50 part-time officers
- Metro Transit facilities are staffed 24 hours a day and cover security for all bus and rail routes, including transit centers, stations and platforms
- Officers work closely with law enforcement partner agencies in the communities in which we provide service

# GLE Safety and Security

- GLE has been working closely with local law enforcement and emergency services to ensure well planned safety and security coordination
- GLE will conduct safety education outreach a year before revenue service begins, including wide-spread communication and community presentations





# GLE Safety and Security

- During Green Line Extension/GLE design and engineering, the Southwest Project Office added the following measures to ensure passenger, pedestrian and trail user safety:
  - Site designs follow Crime Prevention Through Environmental Design (CPTED) best practices
  - Safety lighting and cameras on all station platforms, and pathways to station platforms
  - Emergency blue light phones on all station platforms
  - Safety lighting and cameras at all park and ride lots
  - Public address (PA) system at all station platforms
  - Accommodations for Metro Transit Police Department parking at stations
  - Modified station-waiting areas to better accommodate people in assisted mobility devices
  - Designated pedestrian and bike crossings at all at-grade LRT tracks

# Communications and Outreach



# 2021 Communications

- Construction updates: 16,600+ subscribers; 46% open rate
- Hotline: 31 calls from Eden Prairie residents
  - 612-373-3933
- Hundreds more non-hotline calls and emails from community members to outreach staff
  - Email: [James.Mockovciak@metrotransit.org](mailto:James.Mockovciak@metrotransit.org)
- Construction Information Workgroup meetings: 4
- Public Walking Tours - 3



West Metro Home Remodeling Fair, Feb. 27

# Upcoming Community Outreach

- Public construction tours
  - Running spring, summer, fall as weather allows
  - Efforts to connect with schools and youth groups
  - Virtual tours
- Pop-up events
- Continued weekly/bi-weekly construction updates



Louisiana Ave in St. Louis Park



Prairie Center Drive in Eden Prairie



## **MORE INFORMATION**

**Website:** [GreenLineExt.org](https://GreenLineExt.org)

**Email:** [swlrt@metrotransit.org](mailto:swlrt@metrotransit.org)

**Twitter:** [@GreenLineExtMN](https://twitter.com/GreenLineExtMN)

**Instagram:** [@GreenLineExtMN](https://www.instagram.com/GreenLineExtMN)