



METRO Green Line Extension: Virtual Town Hall City of Hopkins

Nkongo Cigolo
March 22, 2022



EDEN PRAIRIE | MINNETONKA | EDINA | HOPKINS | ST. LOUIS PARK | MINNEAPOLIS

Today's topics

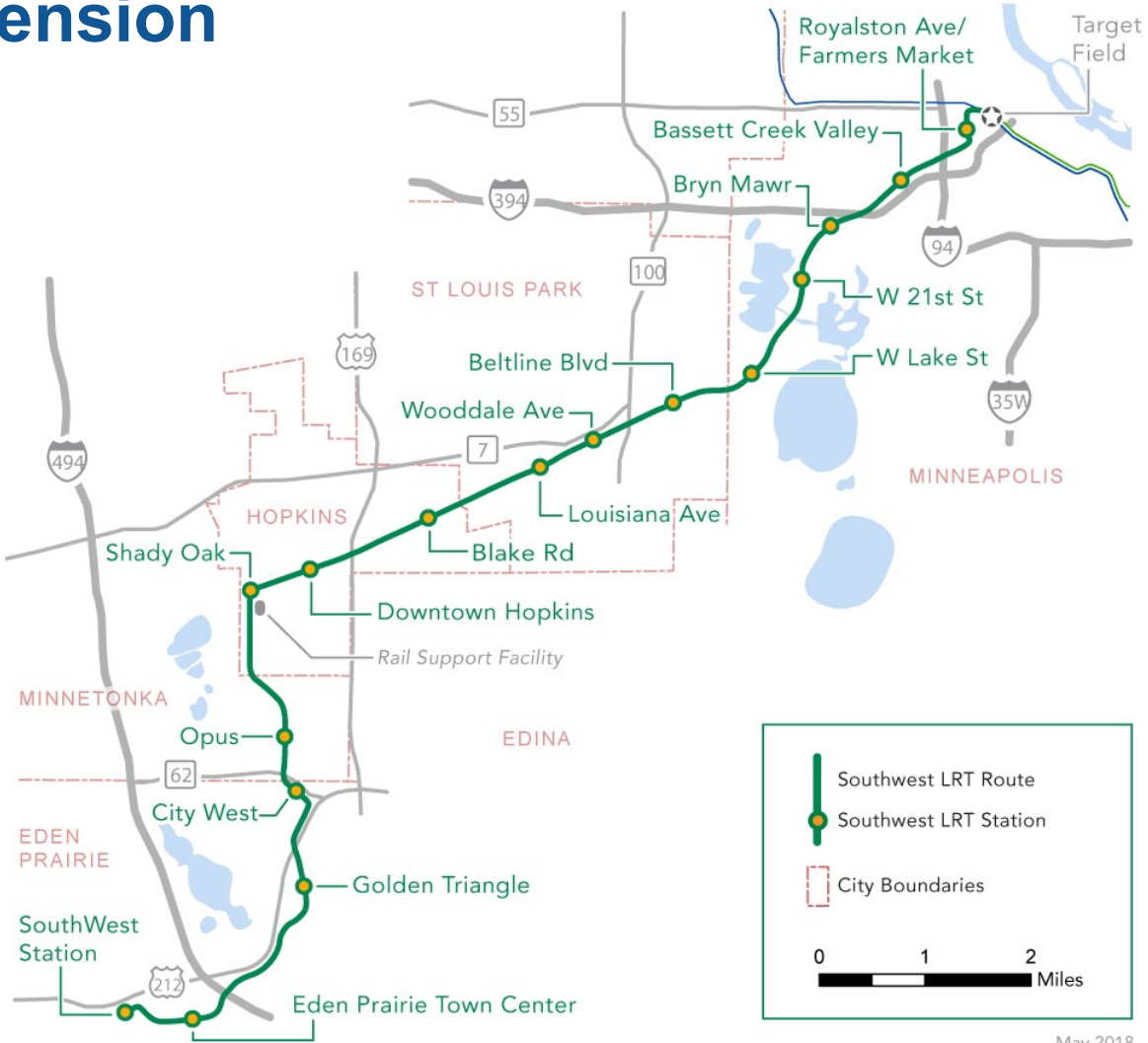
- Project Overview
- Project Update
- 2021 Construction Recap
- 2022 Construction Highlights
- Systems Overview
- Communications & Outreach



Project Overview

METRO Green Line Extension

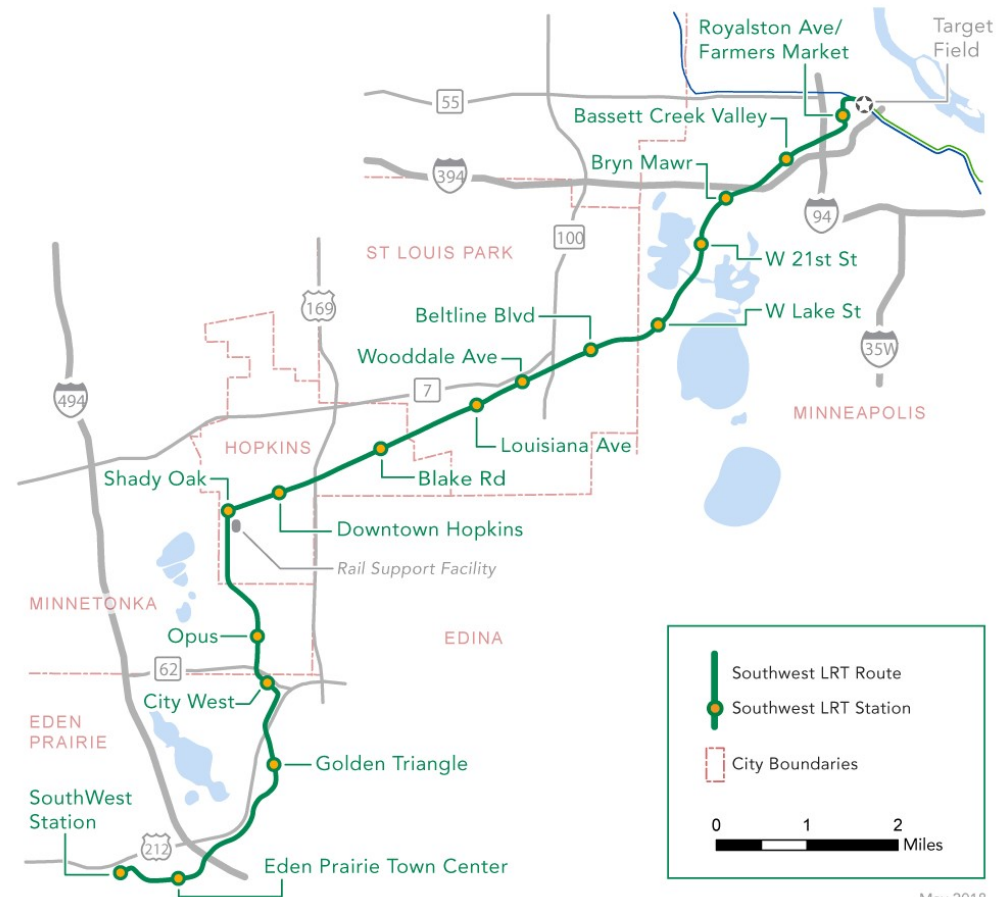
- Extends the Green Line with 14.5 miles of new LRT
- 16 new stations
- One seat ride from Eden Prairie to Downtown St. Paul
- Direct service to Downtown Minneapolis, U of M, stadiums
- Connections to rail and bus routes
- Downtown Minneapolis to Eden Prairie: ~35 minutes



May 2018

METRO Green Line Extension Scope

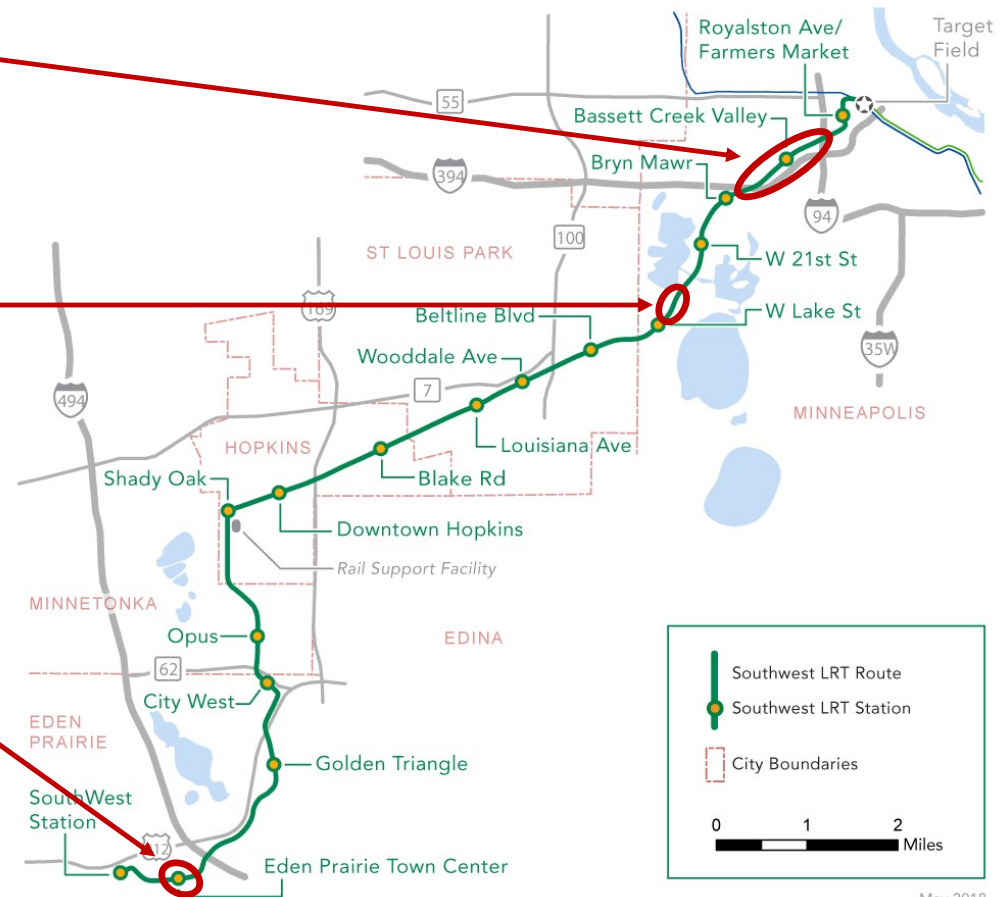
- 16 new stations
- 44 structures
 - 29 new bridges: LRT, pedestrian, roadway, freight
 - 7 existing bridges with modifications
 - 6 pedestrian tunnels
 - 2 cut and cover tunnels:
 - TH 62 582 ft., Kenilworth 2,236 ft.
- 15 at-grade LRT crossings
 - Includes 5 shared crossings w/freight rail
- 127 retaining walls
- Track: ~182,000 TF
- 7.8 mi shared LRT and freight rail corridor



Project Update

Civil construction challenges: Key issues

- Corridor protection wall
 - Added to the civil construction contract by change order
 - Adds significant time to the construction schedule in Minneapolis
- Secant pile (retaining) wall
 - Unforeseen soil conditions (settling during initial tunnel construction) necessitated an alternative construction method
 - This was a major change that sets the overall completion of civil construction due to complexity of construction involved
- Eden Prairie Town Center Station
 - Added to the civil construction contract by change order
- These issues have resulted in additional time and costs for the Project

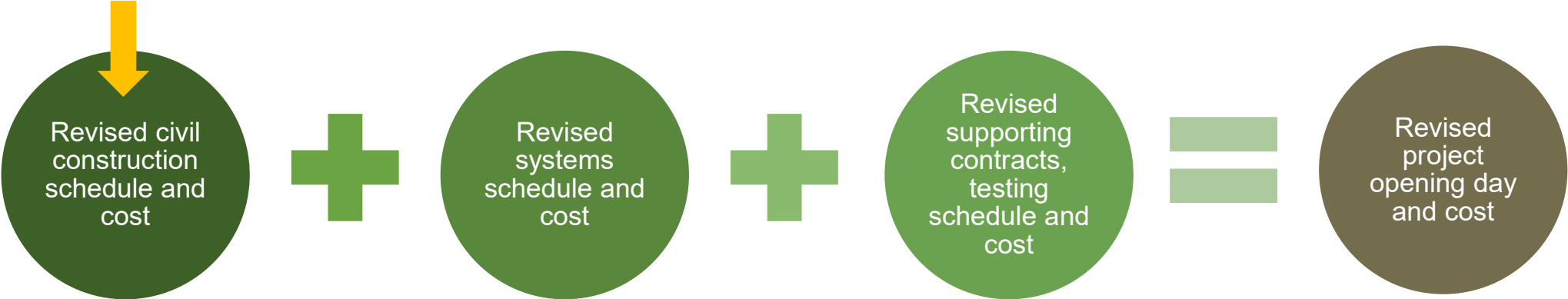


Civil construction schedule and cost

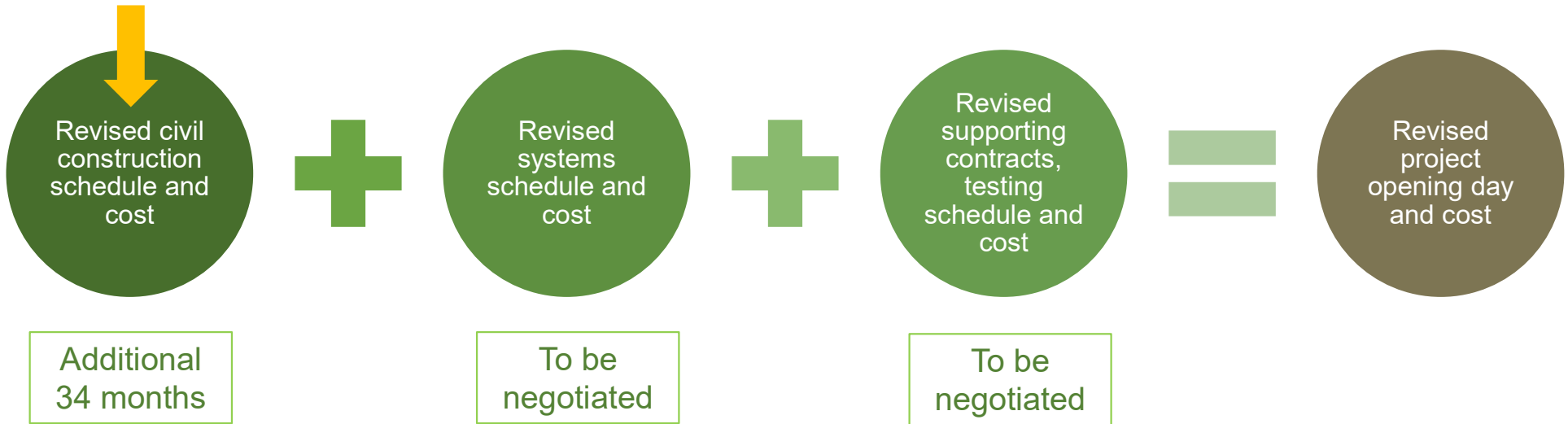


Revised project schedule and cost process: Current step

- Taken together, these issues impact:
 - Other Green Line Extension contracts
 - Staffing, supplies, overhead, etc.
 - Overall project schedule and cost



Revised project schedule and cost process



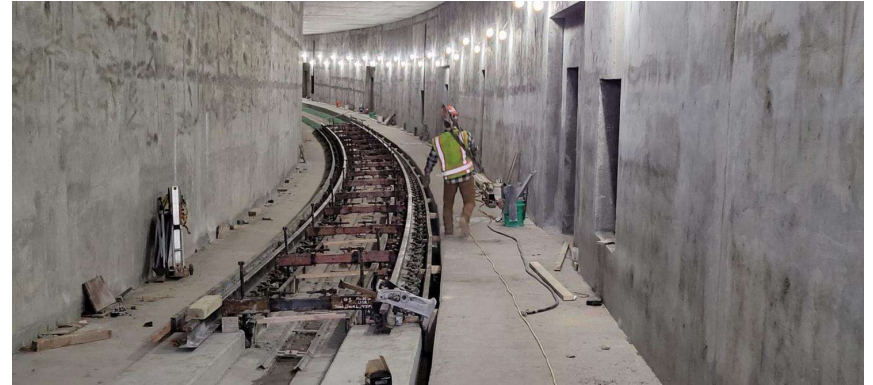
- Estimated project cost: \$2.65B - \$2.75B
- Revised costs will be known when all agreements are finalized
- Project opening day: 2027

Project budget

- The Green Line Extension has undergone cost cutting measures already, we are building a well-constructed line that meets the needs of our communities
- With the project 60% complete meaningful reductions are not available
- Additional funding will be needed to complete the project
 - We are working with partners to identify available funding solutions
 - We will not be asking city partners to contribute more
 - Stopping the project would be more costly

How Do Costs Compare?

- Compared to our peer group of metropolitan areas including Seattle, Portland, and Houston, our costs are currently at or below their similar projects
 - Previous Green Line Extension: ~\$152 million per mile
 - Revised Green Line Extension: \$180 million to \$190 million per mile
 - Peer projects: between \$200 million and \$500 million per mile



LRT track in the Highway 62 LRT tunnel



LRT track at the Downtown Hopkins Station

National Comparisons

LRT Project	Length in Miles	Number of Stations	Cost Per Mile
Twin Cities METRO Green Line Extension	14.5	16	\$180 - \$190 million
Pittsburgh: North Shore	1.2	3	\$560 million
Seattle: U-Link	3.2	2	\$511 million
Seattle: East Line	13.9	10	\$259 million
Portland: Orange Line	7.3	10	\$243 million
Los Angeles: Expo Line Phase 2	6.6	7	\$225 million
Houston: Green Line	3.2	7	\$223 million

Source: Eno Center for Transportation, "A Blueprint for Building Transit Better"

\$2+ Billion in Permitted & Planned Community Development

Elevate At SouthWest Station, Eden Prairie



The Moline at Downtown Hopkins Station



Minnetonka Station at Opus Station



Beltline Station Development, St. Louis Park

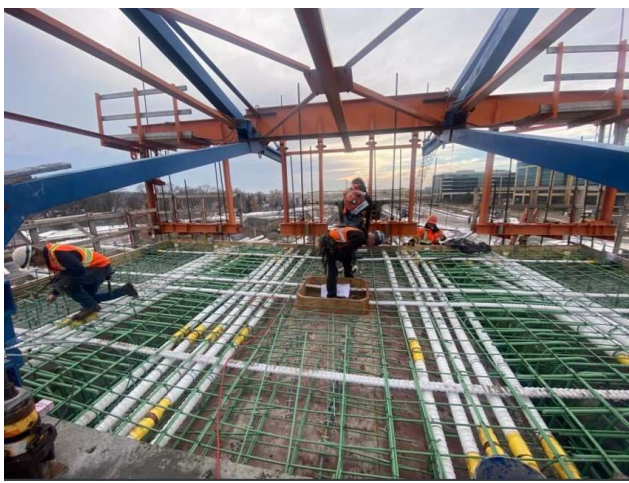


Disadvantaged Business Enterprise

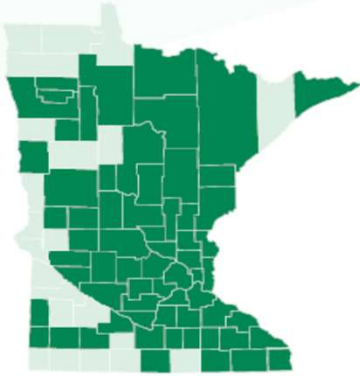
Construction Contract Description	DBE Billed to Date	DBE Percentage Achieved*
Civil: 16%	\$139.0 Million	21.0%
Systems: 12%	\$11.5 Million	16.2%
Franklin OMF: 15%	\$7.6 Million	18.9%
OVERALL ACHIEVEMENT: 15%	\$163.4 Million	20.3%

**As of December 31, 2021*

Green Line Extension = Statewide Jobs



\$53,170,758
IN PAY GOING TO
65 of the **87** MINNESOTA COUNTIES
SO FAR



**As of July 2021*

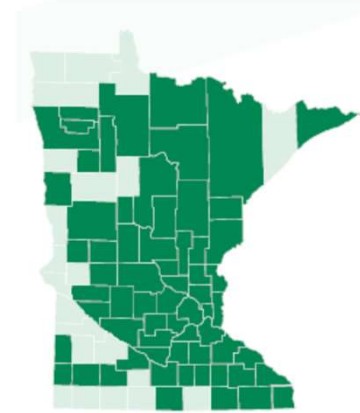


Statewide economic benefits

- Putting people to work:
 - More than 1.8 million hours worked
 - Paychecks for Minnesotans worth more than \$53.1 million and growing
 - Employing folks from 75% of counties statewide
 - \$134 million billed by Disadvantage and Business Enterprise companies (20.9%) for civil construction activities, exceeding the goal of 16%
 - Project will support 7,500 construction and construction related jobs and \$350 million in payroll to be reinvested in communities throughout the Twin Cities and the state

65 of 87

Minnesota counties have someone bringing home a Green Line Extension paycheck



2021 Construction Recap

Accomplished by end of 2021: LRT construction sequencing



Construction highlights: 2021

- Civil construction: 60% complete
- Under construction:
 - 25 bridges completed or underway out of 29
 - 8 tunnels underway out of 8
 - 114 retaining walls completed or under construction out of 131
- 95% of 946 private utilities completed
- 75% of nearly 1,300 public utilities completed
- Completed all 15 building demolitions
- Systems contractor mobilized and in design and procurement
- Franklin Operation & Maintenance facility modifications are nearly complete
- 26 of 27 Light Rail Vehicles delivered

LRT stations underway

- 11 stations underway of 16
 - When complete will allow a stress-free commute from Eden Prairie to downtown Minneapolis
 - Consistent commute time, unimpacted by traffic
 - Improved connections to regional destinations such as Minneapolis Grand Rounds, Methodist Hospital, Downtown Hopkins, UnitedHealth Group's Optum corporate campus, Eden Prairie Center



Shady Oak Station

Downtown Hopkins Station



Shady Oak Station Park and Ride

- The Project Office is working with City staff to optimize surface parking at the station area
- Goals include:
 - Meet Project parking demand
 - Maximize development opportunity

Beam Placement at Minnetonka-Hopkins LRT Bridge



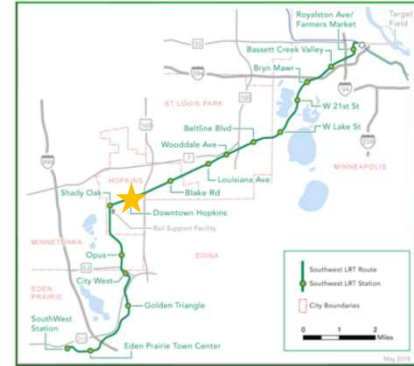
Minnetonka-Hopkins LRT Bridge



Shady Oak Station



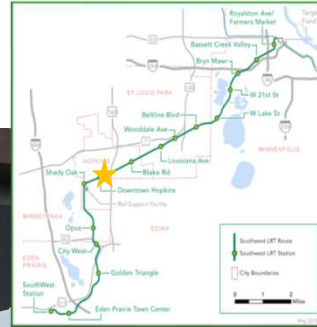
Roadway Reconstruction – 8th Avenue South



Track Work – West of 8th Avenue South



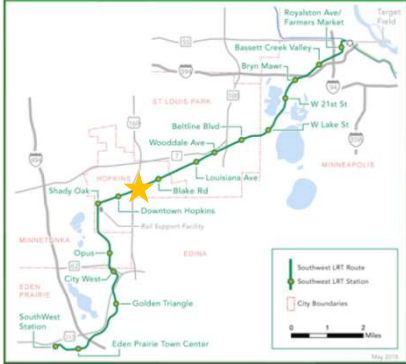
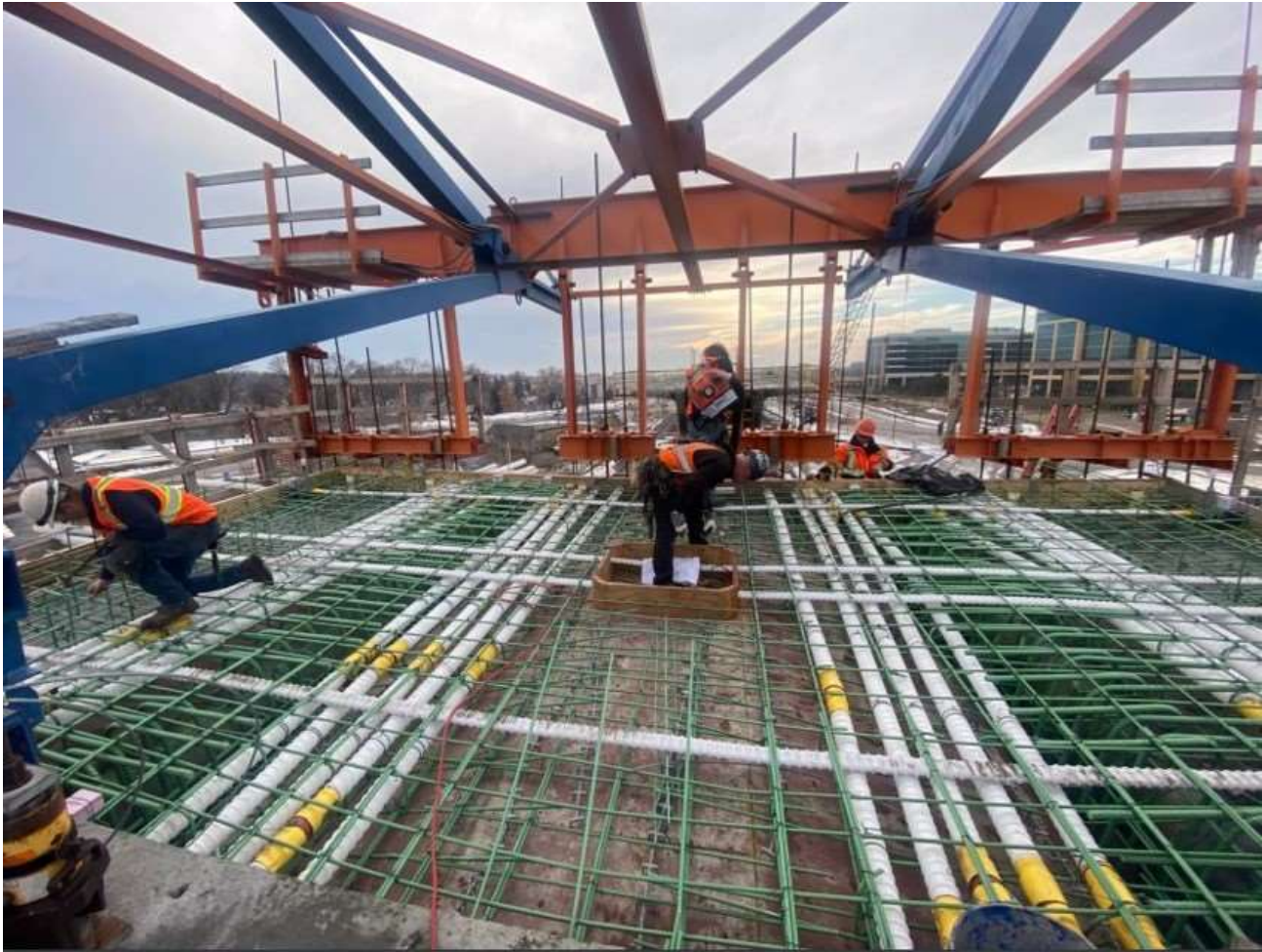
Track Work – East of 8th Avenue South



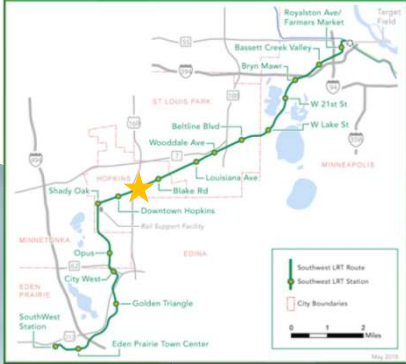
Downtown Hopkins Station



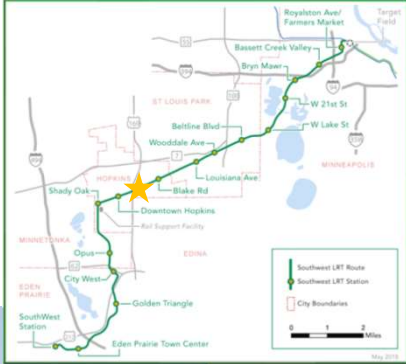
Excelsior Boulevard LRT Bridge



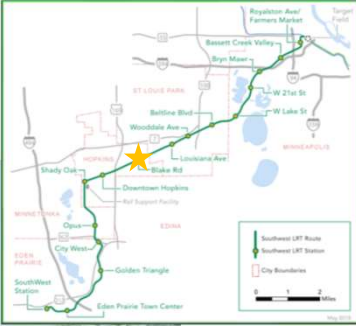
Excelsior Boulevard LRT Bridge



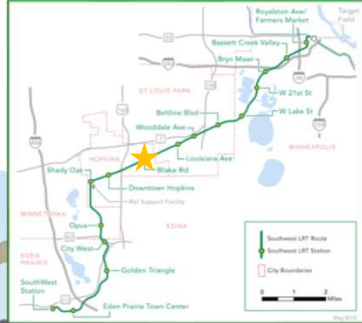
Excelsior Boulevard LRT Bridge



Regional Trail at Blake Road Station

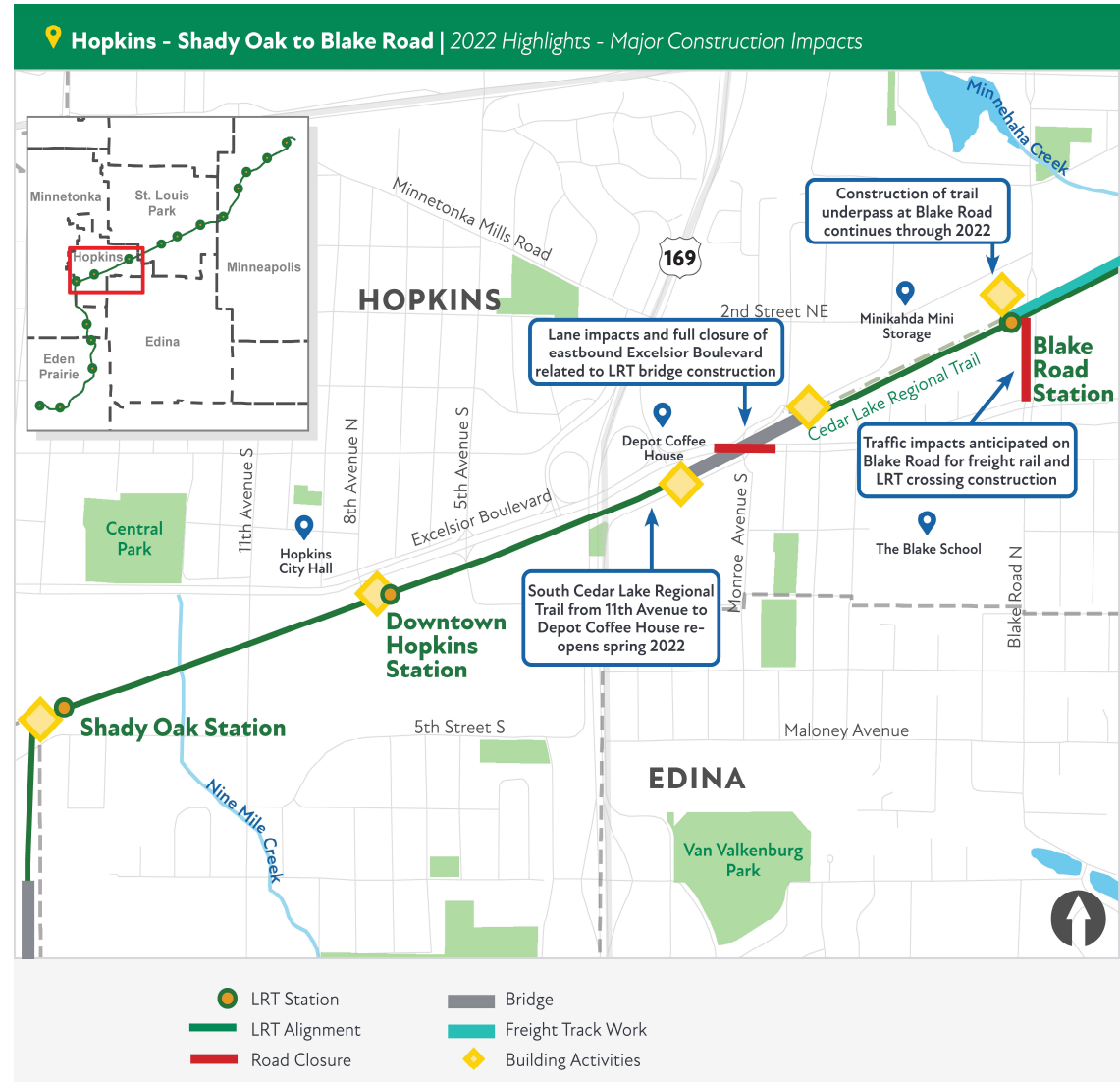


Regional Trail at Blake Road Station



2022 Construction Highlights

2022 Hopkins Construction Activity Map



Hopkins: 2022 Construction Highlights

- Stations

- Shady Oak Station: advance structure, track and guideway
- Downtown Hopkins Station Area: advance Civic Plaza
- Blake Road Station Area: advance utility, trail underpass, retaining walls, begin Pierce Avenue access road construction

- Bridges

- Minnetonka-Hopkins LRT bridge: advance deck work
- Excelsior Boulevard LRT bridge: advance construction over roadway

- Traffic Impacts

- Excelsior Boulevard: closure for LRT bridge work over eastbound traffic lanes from spring through fall
- Blake Road: short-term closure(s) for freight and LRT rail crossing



Shady Oak Station

Hopkins: 2022 Construction Highlights

- Trackwork
 - Advance freight rail shift between east of Blake Road and east of Excelsior Boulevard
- Systems (Electrical) Work
 - Begin Traction Power Substation construction
 - Begin signal and Overhead Catenary equipment installation between 11th Avenue South and the Depot
- Completion Milestones
 - Open the Minnesota River Bluff trail between 11th Avenue South and the Depot this spring



*Minnetonka-Hopkins LRT
Bridge*

Systems Contract Work

Systems Contractor

- Aldridge Parsons Joint Venture (APJV)
- Project Team Management - 25
- Project Craft Workers - 40-50
- Subcontractors - 25



Foundation work for Traction Power Substation (TPSS)



DD0

Finished TPSS Station



Slide 42

DDO Note location if possible

Davies, David, 2022-03-07T20:03:41.035

Inside a TPSS Station



Slide 43

DDO Note location if possible

Davies, David, 2022-03-07T20:03:41.035

Communications and Outreach

DDO 2021 Communications

- Construction updates: 16,600+ subscribers; 46% open rate
- Hotline: 23 calls from Hopkins residents
 - 612-373-3933
- Hundreds more non-hotline calls and emails from community members to outreach staff
 - Email: nkongo.cigolo@metrotransit.org
- Construction Information Workgroup meetings: 4



West Metro Home Remodeling Fair, Feb. 27

Slide 45

DDO Is there a photo of Nkongo in action from 2021 to put on this slide?
Davies, David, 2022-02-23T22:25:57.870

Upcoming Community Outreach

✓ Hopkins Virtual Town Hall: March 22, 2022, 6-7pm

- Public construction tours
 - Running spring, summer, fall as weather allows
 - Efforts to connect with schools and youth groups
 - Virtual tours
- Pop-up events
- Continued weekly/bi-weekly construction updates

DD0



Louisiana Ave in St. Louis Park



Prairie Center Drive in Eden Prairie

Slide 46

DDO Add a bullet for coordination on historic district designation
Davies, David, 2022-02-23T22:29:12.363

MORE INFORMATION

Website: GreenLineExt.org

Email: swlrt@metrotransit.org

Twitter: [@GreenLineExtMN](https://twitter.com/GreenLineExtMN)

Instagram: [@GreenLineExtMN](https://www.instagram.com/GreenLineExtMN)