



# Penn Avenue South & South Wayzata Boulevard LRT Construction Activities in Minneapolis

Tuesday, April 18, 2023

6:00-7:00 PM

held virtually via MS Teams



# Welcome + Meeting Logistics

- This meeting is being recorded and will be posted to the Green Line Extension (GLE) website.
- Please mute yourself when you are not talking.
- Hold questions until the end of the presentation or type them in the chat. A majority of the time is reserved for Community Questions & Answers (Q&A) at the conclusion of the presentation. Please use the "raise hand" feature to ask a question.



*Rendering of the Bryn Mawr LRT Station*

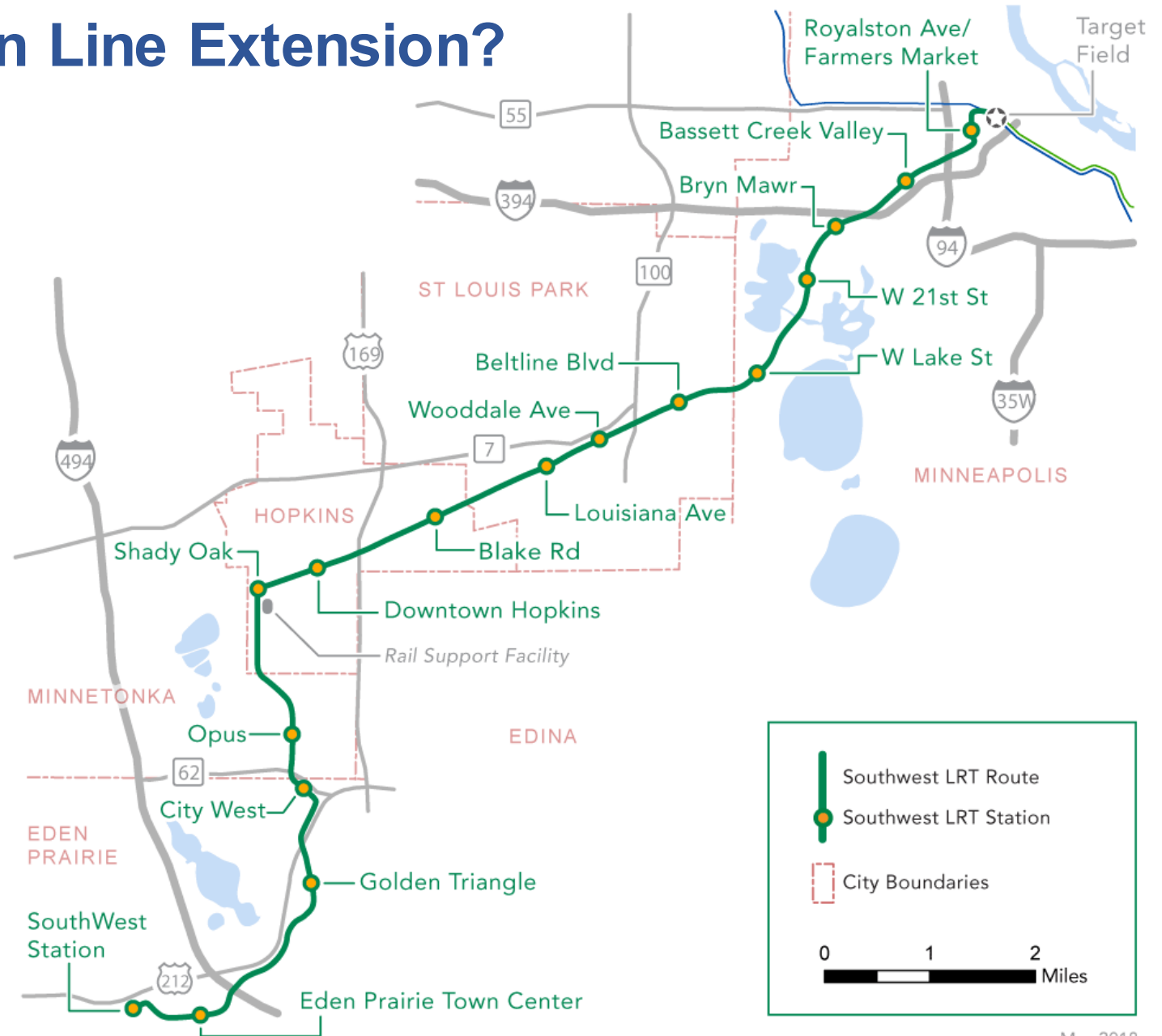
# Today's Topics

- **Project Office Presentation**
  - Brief Overview of the GLE Project
  - Penn Avenue South & South Wayzata Boulevard 2023 Construction Activities/Impacts
- **Community Q&A**



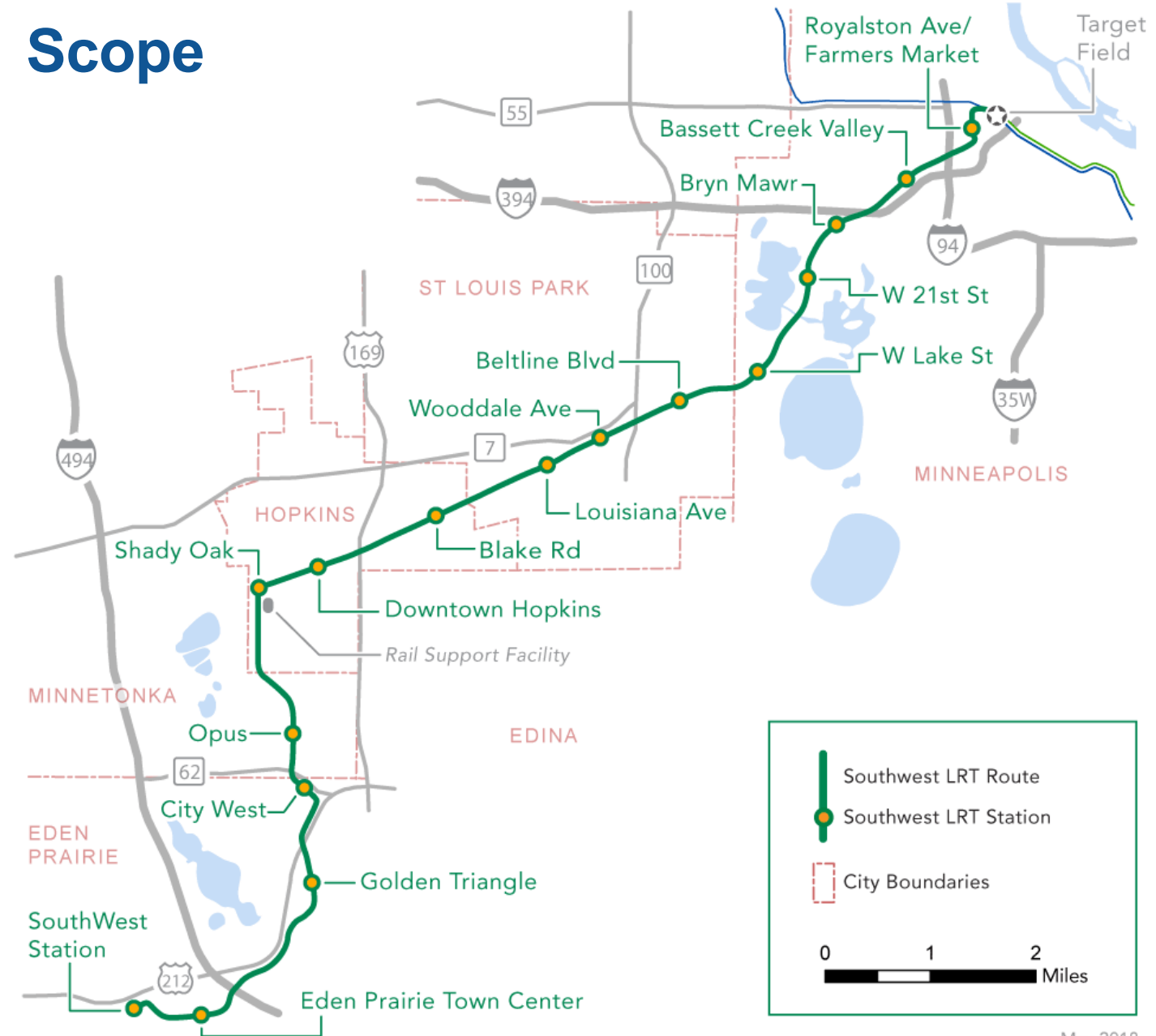
# What is the METRO Green Line Extension?

- Extends the Green Line with 14.5 miles of new LRT
- 16 new stations
- One seat ride from Eden Prairie to Downtown St. Paul
- Direct service to Downtown Minneapolis, U of M, stadiums
- Connections to rail and bus routes
- Downtown Minneapolis to Eden Prairie: ~35 minutes



# METRO Green Line Extension Scope

- 16 new stations
- 44 structures
  - 29 new bridges: LRT, trail/pedestrian, roadway, freight
  - 7 existing bridges w/ modifications
  - 6 trail/pedestrian tunnels
  - 2 cut and cover tunnels:
    - Hwy 62: 582 ft.
    - Kenilworth: 2,236 ft.
- 15 at-grade LRT crossings
  - Includes 5 shared crossings w/ freight rail
- 127 retaining walls
- Track: ~182,000 TF
- 7.8 mi shared LRT and freight rail corridor

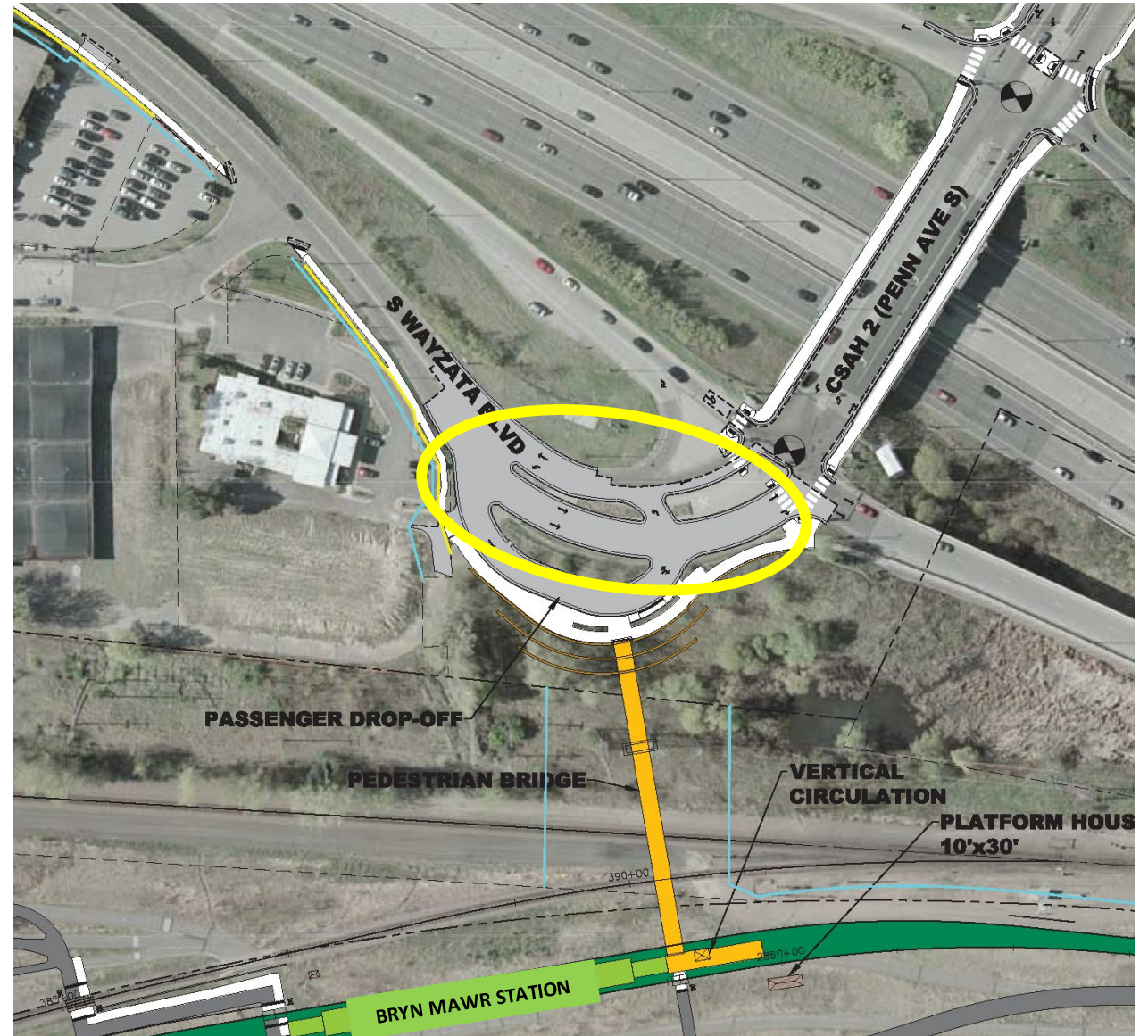


May 2018

# Penn Avenue South & South Wayzata Boulevard 2023 Construction

Work related to the construction of the Bryn Mawr LRT Station area requires a closure of the intersection at Penn Avenue South and South Wayzata Boulevard.

- **Dates / Duration:** Work begins early June 2023 and will last ~2 months.
- **Access:**
  - Detour to/from I-394 East and West
  - Trail/pedestrian/bike access maintained throughout closure
  - Metro Transit buses
- **Work hours:**
  - 7:00 AM – 6:00 PM, Monday to Friday



# 2023 Construction Phasing and Activities

- **Major construction activities** of the Penn Avenue South and South Wayzata Boulevard area:
  - Utility work
  - Intersection, roadway, and boulevard/median reconstruction
  - Sidewalk construction



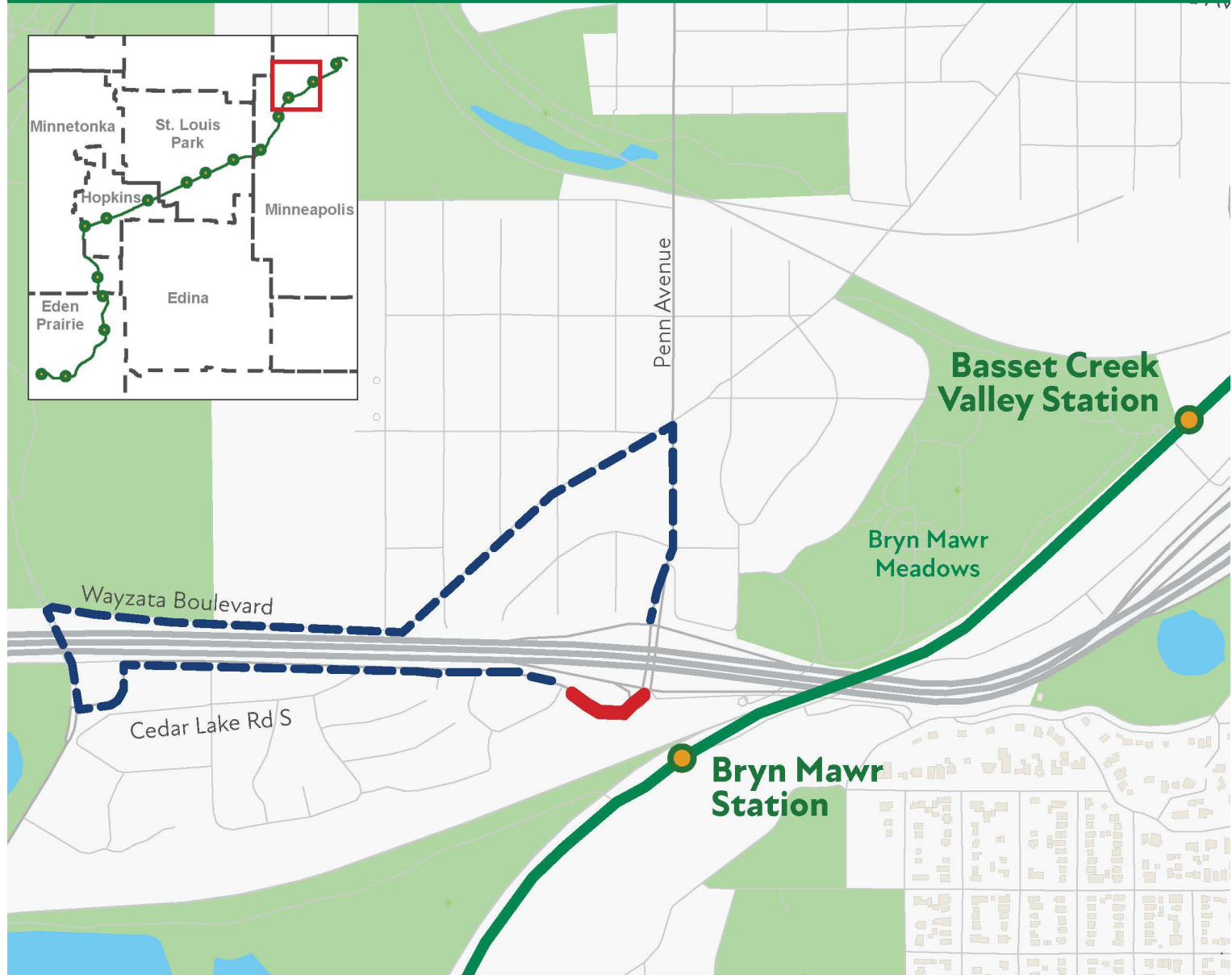
*Photo of the Bryn Mawr LRT Station area under construction, April 2023*

# 2023 Construction Phasing and Activities





# Traffic Detour



- Penn/Wayzata Detour
- Road Closure
- LRT Alignment
- LRT Station
- Trail/Sidewalk Closure

# Detour Details

- **Motorized traffic detour**
  - Preserves access to on and off-ramps in both directions on I-394
  - Adds ~5 minutes to get from Penn Avenue north of I-394 to intersection of South Wayzata Boulevard and Madeira Avenue
  - All business access will be preserved
  - Shared with City and County emergency services
- **Non-motorized traffic detour**
  - Access will be preserved through the work zone during construction. Route may shift as work progresses.
  - Peds/bikes can access the Cedar Lake Trail access point via I-394 from Penn Avenue and from South Wayzata Boulevard
  - Final details being coordinated with the City. Route will be shared through Metro Transit's *Construction Update* electronic news and with Bryn Mawr Neighborhood Association (BMNA) once finalized

# Future Construction Activities

- **Bryn Mawr Station – rail corridor**
  - Station construction – ped overpass, vertical circulation
  - Track installation
  - Trail realignment and reconstruction
- **Bryn Mawr Station – street level**
  - Sidewalks
  - Station entrance, passenger drop-off and bus stop plaza area
  - Boulevard and sidewalk work on Penn Avenue South up to Cedar Lake Road



*Photo of the Bryn Mawr LRT Station area under construction, April 2023*

# Community Outreach

## Completed:

- In-person visits & phone calls to local businesses the week of 4/10
- Flyers delivered to all local residences south of I-394, between Cedar Lake Parkway and Penn Avenue South the week of 4/10
- *Construction Update* electronic news – sign up at [www.GreenLineExt.org](http://www.GreenLineExt.org)
- Bryn Mawr Neighborhood Association (BMNA) communications
- 4/18/23 Community Meeting

## On-going:

- Access to the 4/18/23 meeting recording & materials at [www.GreenLineExt.org](http://www.GreenLineExt.org)
- *Construction Update* electronic news (weekly throughout the construction season)
- Timely communication with local businesses via email for business access impacts
- BMNA communications
- GLE outreach staff available for general questions
- 24-hour construction hotline for urgent construction issues



# Community Q&A

# Next Steps



- Updates communicated through weekly *GLE Construction Update* electronic news. Sign up: [www.GreenLineExt.org](http://www.GreenLineExt.org). Includes start to work, closures, detours, timing, etc.
- Answers that are not able to be provided at this meeting will be posted to the GLE Meetings and Events page and noted in the *Construction Update*, as well as communicated to BMNA
- Advance signage to be in place one week before closure
- One-day closure in mid-May on eastbound South Wayzata Boulevard

# Contact Information

## General questions?

- GLE outreach staff for Minneapolis (email both Kaydee and David to ensure timely response):
  - Kaydee Kirk, Community Outreach Coordinator, [kaydee.kirk@metrotransit.org](mailto:kaydee.kirk@metrotransit.org), 612-373-3941
  - David Davies, Public Involvement Manager, [david.davies@metrotransit.org](mailto:david.davies@metrotransit.org), 612-373-3895



## Urgent concerns?

- Call the 24-hour hotline for problems such as blocked access to business or residential areas, improper traffic sign placement or parking issues: 612-373-3933

## MORE INFORMATION

**Website:** [GreenLineExt.org](https://GreenLineExt.org)

**Email:** [swlrt@metrotransit.org](mailto:swlrt@metrotransit.org)

**Twitter:** [@GreenLineExtMN](https://twitter.com/GreenLineExtMN)

**Instagram:** [@GreenLineExtMN](https://www.instagram.com/GreenLineExtMN)