

Southwest Light Rail Project
Opus Hill Tree Survey Summary Table
 City of Minnetonka

April 9, 2014

Tree Species	Total Number of Trees Surveyed	Trees Impacted within Construction Limits
AMUR MAPLE	1	0
BASSWOOD	21	5
BIGTOOTH ASPEN	112	68
BLACK CHERRY	81	40
BLACK LOCUST	94	76
BLACK WALNUT	21	15
BLUE SPRUCE	19	6
BOXELDER	295	138
BUR OAK	61	32
CHOKECHERRY	2	1
COTTONWOOD	111	59
CRABAPPLE	8	2
ELM	135	59
GREEN ASH	95	35
HACKBERRY	1	1
IRONWOOD	4	2
LITTLE LEAF LINDEN	2	1
MOUNTAIN ASH	5	2
PAPER BIRCH	55	36
PIN OAK	4	1
QUAKING ASPEN	40	16
RED OAK	223	115
RED PINE	12	4
SUGAR MAPLE	13	8
WHITE OAK	29	19
WHITE SPRUCE	24	19
WILLOW	18	0
TOTAL	1486	760

Southwest Light Rail Project
Opus Area Tree Survey Table
City of Minnetonka

SRF Consulting Group
April 9, 2014

ID #	TREE SPECIES	DIAMETER AT BREAST		WITHIN CONST. LIMITS*	LOCATION	
		HEIGHT (INCHES)	CONDITION		(NORTHING)	(EASTING)
1	BOXELDER	13	FAIR	YES	491966.002	139701.427
2	BOXELDER	10	FAIR	YES	491954.961	139723.716
3	BOXELDER	8	FAIR	NO	491972.790	139766.762
4	BOXELDER	12	FAIR	YES	491986.499	139775.927
5	BOXELDER	4	FAIR	YES	491989.634	139781.966
6	BOXELDER	6	FAIR	YES	491996.629	139779.963
7	BOXELDER	8	FAIR	YES	492005.818	139766.680
8	BOXELDER	7	FAIR	YES	492009.372	139772.007
9	BOXELDER	14	FAIR	YES	492007.141	139786.879
10	BOXELDER	10	FAIR	YES	492004.057	139781.309
11	BOXELDER	14	FAIR	YES	491992.157	139788.818
12	BOXELDER	8	FAIR	YES	491995.936	139793.562
13	BOXELDER	16	FAIR	YES	491982.154	139801.142
14	BOXELDER	9	FAIR	YES	491999.078	139807.172
15	BOXELDER	14	FAIR	YES	492001.297	139810.054
16	BOXELDER	15	FAIR	YES	492004.707	139815.928
17	BOXELDER	12	FAIR	YES	492019.850	139812.109
18	BOXELDER	15	FAIR	YES	492023.818	139791.507
19	BOXELDER	9	FAIR	YES	492041.658	139784.589
20	BOXELDER	14	FAIR	YES	492030.785	139798.660
21	BOXELDER	18	FAIR	YES	492056.013	139796.698
22	BOXELDER	10	FAIR	YES	492030.205	139812.250
23	BOXELDER	12	FAIR	YES	492030.879	139820.506
24	COTTONWOOD	24	FAIR	YES	492073.107	139826.922
25	GREEN ASH	18	FAIR	YES	492106.299	139833.842
26	RED PINE	12	FAIR	YES	492116.967	139851.777
27	COTTONWOOD	20	FAIR	YES	492120.850	139875.183
28	BOXELDER	12	FAIR	NO	492126.886	139872.144
29	GREEN ASH	18	FAIR	YES	492153.371	139849.266
30	GREEN ASH	14	FAIR	NO	492122.342	139896.946
31	BOXELDER	12	FAIR	YES	492048.694	139845.877
32	BOXELDER	15	FAIR	YES	492039.991	139855.965
33	BOXELDER	8	FAIR	YES	492039.027	139855.548
34	BOXELDER	10	FAIR	YES	492034.971	139855.370
35	BOXELDER	12	FAIR	YES	492002.720	139850.882
36	BOXELDER	15	FAIR	YES	491996.166	139855.422
37	BOXELDER	15	FAIR	YES	492000.002	139878.828
38	BOXELDER	16	FAIR	YES	491993.642	139877.127
39	BOXELDER	10	FAIR	YES	491994.984	139894.910
40	BOXELDER	14	FAIR	YES	492004.550	139900.921

*Note: Survey data represents location of tree stem only, and does not make assumptions about location of below ground root structure, which varies by tree size, species, and field conditions. Actual impact from construction may vary depending on individual circumstances.

Southwest Light Rail Project
Opus Area Tree Survey Table
City of Minnetonka

SRF Consulting Group
April 9, 2014

ID #	TREE SPECIES	DIAMETER AT BREAST		WITHIN CONST. LIMITS*	LOCATION	
		HEIGHT (INCHES)	CONDITION		(NORTHING)	(EASTING)
41	BOXELDER	10	FAIR	YES	492020.084	139908.286
42	BOXELDER	14	FAIR	YES	492031.434	139893.725
43	BOXELDER	16	FAIR	YES	492028.456	139877.459
44	BOXELDER	14	FAIR	YES	492044.029	139869.261
45	COTTONWOOD	20	FAIR	YES	492053.776	139877.544
46	BOXELDER	16	FAIR	YES	492062.693	139865.950
47	COTTONWOOD	24	FAIR	YES	492067.570	139869.992
48	COTTONWOOD	12	FAIR	YES	492073.578	139876.601
49	COTTONWOOD	24	FAIR	YES	492080.439	139873.916
50	COTTONWOOD	24	FAIR	YES	492084.933	139901.477
51	COTTONWOOD	16	FAIR	YES	492065.449	139906.544
52	COTTONWOOD	18	FAIR	YES	492062.502	139905.757
53	COTTONWOOD	26	FAIR	YES	492051.014	139901.164
54	COTTONWOOD	12	FAIR	YES	492017.454	139919.117
55	BOXELDER	8	FAIR	YES	492016.429	139927.196
56	BOXELDER	12	FAIR	YES	492051.916	139915.810
57	BOXELDER	8	FAIR	YES	492079.153	139921.921
58	COTTONWOOD	22	FAIR	YES	492091.554	139915.327
59	COTTONWOOD	15	FAIR	YES	492094.930	139926.839
60	ELM	12	FAIR	YES	492079.350	139936.095
61	COTTONWOOD	18	FAIR	YES	492083.877	139937.455
62	COTTONWOOD	26	FAIR	YES	492092.747	139935.490
63	COTTONWOOD	24	FAIR	YES	492058.679	139951.172
64	GREEN ASH	12	FAIR	NO	491767.714	140546.028
65	ELM	6	FAIR	NO	491764.940	140552.141
66	BOXELDER	6	FAIR	NO	491762.732	140536.549
67	BOXELDER	14	FAIR	NO	491746.129	140530.007
68	BOXELDER	15	FAIR	NO	491738.623	140535.984
69	ELM	8	FAIR	NO	491758.748	140565.617
70	GREEN ASH	9	FAIR	NO	491775.174	140564.965
71	ELM	7	FAIR	NO	491771.236	140572.834
72	ELM	5	FAIR	NO	491767.166	140572.069
73	GREEN ASH	16	FAIR	NO	491779.581	140572.351
74	ELM	6	FAIR	NO	491777.197	140563.627
75	ELM	10	FAIR	YES	491833.375	140597.597
76	ELM	8	FAIR	YES	491834.108	140610.986
77	RED OAK	8	FAIR	YES	491851.313	140630.020
78	GREEN ASH	5	FAIR	NO	491867.368	140680.636
79	BLACK CHERRY	14	FAIR	NO	491851.883	140710.965
80	RED OAK	16	FAIR	NO	491871.039	140713.035
81	BASSWOOD	14	FAIR	NO	491880.921	140732.404
82	COTTONWOOD	30	FAIR	NO	491893.226	140738.738
83	ELM	16	DEAD	NO	491866.780	140734.395

Southwest Light Rail Project
Opus Area Tree Survey Table
City of Minnetonka

SRF Consulting Group
April 9, 2014

ID #	TREE SPECIES	DIAMETER AT BREAST		WITHIN CONST. LIMITS*	LOCATION	
		HEIGHT (INCHES)	CONDITION		(NORTHING)	(EASTING)
84	BASSWOOD	18	FAIR	NO	491853.188	140740.600
85	BASSWOOD	12	FAIR	NO	491863.539	140748.655
86	BOXELDER	10	FAIR	NO	491866.156	140754.038
87	ELM	18	FAIR	NO	491866.551	140760.991
88	GREEN ASH	5	FAIR	NO	491848.659	140731.501
89	BLACK CHERRY	14	FAIR	NO	491841.974	140715.453
90	BLACK CHERRY	5	FAIR	NO	491838.729	140705.262
91	ELM	7	FAIR	NO	491842.301	140700.152
92	BASSWOOD	15	FAIR	NO	491843.055	140686.907
93	WHITE OAK	30	FAIR	YES	491804.783	140636.957
94	RED OAK	12	FAIR	NO	491793.809	140597.365
95	WHITE OAK	32	FAIR	YES	491809.266	140641.912
96	RED OAK	6	FAIR	YES	491817.105	140606.383
97	ELM	8	FAIR	YES	491813.864	140603.851
98	RED OAK	8	FAIR	YES	491821.512	140596.501
99	ELM	10	FAIR	YES	491818.454	140597.065
100	RED OAK	10	FAIR	NO	491810.521	140579.530
101	GREEN ASH	5	FAIR	NO	491800.209	140582.096
102	RED OAK	6	FAIR	NO	491785.154	140581.932
103	RED OAK	4	FAIR	NO	491791.770	140592.711
104	RED OAK	10	FAIR	NO	491786.608	140593.821
105	RED OAK	14	FAIR	NO	491787.075	140605.067
106	RED OAK	15	FAIR	NO	491778.575	140609.973
107	RED OAK	8	FAIR	NO	491776.688	140597.232
108	ELM	4	FAIR	NO	491769.196	140596.240
109	ELM	6	FAIR	NO	491764.290	140594.298
110	BUR OAK	15	FAIR	NO	491774.982	140597.886
111	ELM	5	FAIR	NO	491779.865	140583.225
112	GREEN ASH	15	FAIR	NO	491777.378	140583.268
113	ELM	5	FAIR	NO	491773.450	140578.328
114	RED OAK	6	FAIR	NO	491766.206	140593.478
115	RED OAK	13	FAIR	NO	491764.297	140591.837
116	RED OAK	10	FAIR	NO	491753.990	140582.118
117	ELM	12	FAIR	NO	491760.569	140582.845
118	ELM	10	FAIR	NO	491751.617	140603.626
119	ELM	5	FAIR	NO	491767.868	140596.984
120	RED OAK	13	FAIR	NO	491759.860	140596.176
121	RED OAK	10	FAIR	NO	491768.626	140624.819
122	RED OAK	12	FAIR	NO	491766.114	140653.141
123	BUR OAK	7	FAIR	NO	491760.169	140650.631
124	ELM	46	FAIR	NO	491752.766	140650.913
125	ELM	8	FAIR	NO	491753.056	140636.677
126	BUR OAK	14	FAIR	NO	491751.336	140649.301

Southwest Light Rail Project
Opus Area Tree Survey Table
City of Minnetonka

SRF Consulting Group
April 9, 2014

ID #	TREE SPECIES	DIAMETER AT BREST		WITHIN CONST. LIMITS*	LOCATION	
		HEIGHT (INCHES)	CONDITION		(NORTHING)	(EASTING)
127	BUR OAK	13	FAIR	NO	491740.924	140650.217
128	ELM	8	FAIR	NO	491749.261	140655.681
129	BUR OAK	7	FAIR	NO	491755.699	140649.729
130	PAPER BIRCH	14	FAIR	NO	491765.554	140654.494
131	BUR OAK	4	FAIR	NO	491772.981	140654.985
132	RED OAK	8	FAIR	NO	491778.440	140647.631
133	GREEN ASH	8	FAIR	YES	491777.163	140653.941
134	ELM	5	FAIR	YES	491772.549	140675.567
135	GREEN ASH	6	FAIR	YES	491780.861	140680.881
136	GREEN ASH	7	FAIR	YES	491792.614	140678.458
137	ELM	5	FAIR	YES	491776.175	140674.678
138	RED OAK	12	FAIR	YES	491779.364	140689.477
139	ELM	6	FAIR	YES	491803.449	140700.267
140	BLACK CHERRY	8	FAIR	YES	491797.557	140712.012
141	ELM	7	FAIR	YES	491797.809	140719.023
142	WHITE OAK	24	FAIR	YES	491807.169	140721.433
143	WHITE OAK	22	FAIR	NO	491813.393	140729.790
144	WHITE OAK	20	FAIR	NO	491820.689	140738.103
145	WHITE OAK	26	FAIR	NO	491830.082	140740.196
146	WHITE OAK	20	FAIR	NO	491832.396	140733.073
147	ELM	5	FAIR	NO	491833.306	140728.170
148	GREEN ASH	6	FAIR	NO	491855.328	140720.521
149	BASSWOOD	12	FAIR	NO	491821.873	140753.918
150	WHITE OAK	22	FAIR	NO	491856.092	140748.018
151	ELM	10	FAIR	NO	491842.620	140773.959
152	BOXELDER	5	FAIR	NO	491855.572	140756.921
153	GREEN ASH	4	FAIR	NO	491837.699	140769.638
154	BASSWOOD	10	FAIR	NO	491821.242	140786.746
155	GREEN ASH	4	FAIR	NO	491823.816	140785.058
156	RED OAK	5	FAIR	NO	491817.303	140781.120
157	BOXELDER	9	FAIR	NO	491819.841	140780.344
158	BOXELDER	15	FAIR	NO	491806.073	140795.308
159	GREEN ASH	4	FAIR	NO	491794.813	140801.790
160	RED OAK	4	FAIR	NO	491787.937	140798.864
161	BLACK CHERRY	10	FAIR	NO	491794.443	140783.452
162	GREEN ASH	4	FAIR	NO	491792.028	140794.249
163	GREEN ASH	4	FAIR	NO	491780.453	140802.339
164	GREEN ASH	6	FAIR	NO	491782.238	140810.365
165	BOXELDER	6	FAIR	NO	491781.809	140796.895
166	BASSWOOD	9	FAIR	NO	491784.229	140770.379
167	WHITE OAK	32	FAIR	YES	491781.321	140768.654
168	BASSWOOD	12	FAIR	NO	491795.478	140754.494
169	ELM	6	FAIR	YES	491776.399	140728.250

Southwest Light Rail Project
Opus Area Tree Survey Table
 City of Minnetonka

SRF Consulting Group
 April 9, 2014

ID #	TREE SPECIES	DIAMETER AT BREAST		WITHIN CONST. LIMITS*	LOCATION	
		HEIGHT (INCHES)	CONDITION		(NORTHING)	(EASTING)
170	WHITE OAK	30	FAIR	YES	491781.222	140727.559
171	ELM	8	FAIR	YES	491808.982	140722.425
172	WHITE OAK	26	FAIR	YES	491779.973	140720.798
173	ELM	4	FAIR	YES	491767.151	140713.705
174	ELM	6	FAIR	YES	491773.477	140705.730
175	ELM	6	FAIR	YES	491758.672	140718.835
176	BUR OAK	6	FAIR	YES	491769.531	140684.258
177	BUR OAK	7	FAIR	YES	491767.231	140676.284
178	BUR OAK	13	FAIR	YES	491758.156	140685.430
179	BUR OAK	10	FAIR	YES	491759.080	140681.039
180	BUR OAK	9	FAIR	NO	491758.230	140670.856
181	ELM	4	FAIR	NO	491742.989	140668.030
182	BUR OAK	5	FAIR	NO	491742.178	140667.808
183	BUR OAK	12	FAIR	NO	491733.223	140655.957
184	ELM	12	FAIR	NO	491734.420	140687.235
185	WHITE OAK	30	FAIR	NO	491711.381	140708.908
186	ELM	5	FAIR	NO	491701.574	140704.535
187	GREEN ASH	4	FAIR	YES	491726.524	140725.799
188	ELM	5	FAIR	YES	491728.781	140741.569
189	GREEN ASH	5	FAIR	YES	491753.838	140738.498
190	BASSWOOD	12	FAIR	NO	491771.441	140797.168
191	PAPER BIRCH	6	FAIR	NO	491761.473	140797.669
192	ELM	9	FAIR	NO	491766.629	140795.748
193	BOXELDER	6	FAIR	NO	491773.054	140800.068
194	PAPER BIRCH	8	FAIR	NO	491760.234	140810.957
195	PAPER BIRCH	10	FAIR	NO	491761.737	140798.271
196	WILLOW	8	FAIR	NO	492245.949	140004.679
197	WILLOW	8	FAIR	NO	492258.058	140054.652
198	BOXELDER	24	FAIR	NO	492238.346	140081.768
199	BOXELDER	8	FAIR	NO	492247.939	140171.130
200	WILLOW	8	FAIR	NO	492281.970	140178.577
201	WILLOW	15	FAIR	NO	492340.422	140092.705
202	WILLOW	12	FAIR	NO	492359.121	140100.044
203	WILLOW	16	FAIR	NO	492360.174	140075.499
204	BOXELDER	12	FAIR	NO	492368.250	140052.628
205	BOXELDER	12	FAIR	NO	492372.999	140037.592
206	BOXELDER	14	FAIR	NO	492356.007	140040.584
207	BOXELDER	5	FAIR	NO	492351.278	140037.481
208	BOXELDER	12	FAIR	NO	492352.309	140027.215
209	BOXELDER	10	FAIR	NO	492348.947	140037.640
210	BOXELDER	9	FAIR	NO	492350.900	140015.725
211	BOXELDER	12	FAIR	NO	492344.041	140024.118
212	BOXELDER	18	FAIR	NO	492329.093	140008.940



ID #	TREE SPECIES	DIAMETER AT BREST		WITHIN CONST. LIMITS*	LOCATION	
		HEIGHT (INCHES)	CONDITION		(NORTHING)	(EASTING)
213	BOXELDER	15	FAIR	NO	492334.715	140011.516
214	COTTONWOOD	22	FAIR	NO	492348.561	140006.313
215	COTTONWOOD	30	FAIR	NO	492342.786	140011.824
216	BOXELDER	18	FAIR	NO	492378.817	140014.049
217	BOXELDER	10	FAIR	NO	492385.399	139993.913
218	BOXELDER	8	FAIR	NO	492368.335	139965.256
219	COTTONWOOD	18	FAIR	NO	492345.051	139989.576
220	COTTONWOOD	24	FAIR	NO	492363.943	139960.766
221	COTTONWOOD	20	FAIR	NO	492358.312	139967.135
222	BOXELDER	14	FAIR	NO	492359.133	139956.061
223	COTTONWOOD	12	FAIR	NO	492382.793	139943.096
224	COTTONWOOD	28	FAIR	NO	492360.987	139938.515
225	COTTONWOOD	34	FAIR	NO	492370.709	139945.038
226	BOXELDER	8	FAIR	NO	492341.540	139977.797
227	WILLOW	14	FAIR	NO	492323.987	139983.721
228	BOXELDER	14	FAIR	NO	492323.784	139944.568
229	BOXELDER	12	FAIR	NO	492178.271	139960.775
230	BOXELDER	15	FAIR	NO	492189.761	139963.507
231	BOXELDER	26	FAIR	NO	492193.956	139982.263
232	BOXELDER	8	FAIR	NO	492200.171	139966.277
233	BOXELDER	8	FAIR	NO	492209.379	139958.524
234	BOXELDER	9	FAIR	NO	492203.869	139955.442
235	BOXELDER	16	FAIR	NO	492195.794	139961.721
236	BOXELDER	15	FAIR	NO	492224.678	139950.317
237	BOXELDER	12	FAIR	NO	492234.661	139968.368
238	BOXELDER	15	FAIR	NO	492223.846	139932.002
239	BOXELDER	24	FAIR	NO	492210.531	139903.417
240	BOXELDER	20	FAIR	NO	492175.360	139901.523
241	BOXELDER	16	FAIR	NO	492167.923	139893.862
242	BOXELDER	10	FAIR	NO	492163.241	139898.865
243	BOXELDER	18	FAIR	NO	492168.038	139884.134
244	BOXELDER	14	FAIR	NO	492171.678	139880.301
245	BOXELDER	15	FAIR	YES	492183.095	139861.861
246	COTTONWOOD	26	FAIR	YES	492182.753	139859.214
247	BOXELDER	14	FAIR	YES	492205.909	139857.721
248	WHITE OAK	26	FAIR	YES	491740.043	140782.389
249	BLACK CHERRY	4	FAIR	YES	491732.582	140783.571
250	WHITE OAK	32	FAIR	YES	491725.189	140772.827
251	ELM	6	FAIR	YES	491737.714	140756.035
252	WHITE OAK	24	FAIR	YES	491738.243	140756.063
253	WHITE OAK	20	FAIR	YES	491755.882	140755.941
254	BASSWOOD	8	FAIR	NO	491771.863	140785.076
255	LITTLEAF LINDEN	4	FAIR	YES	491766.426	140769.711

Southwest Light Rail Project
Opus Area Tree Survey Table
City of Minnetonka

SRF Consulting Group
April 9, 2014

ID #	TREE SPECIES	DIAMETER AT BREAST		WITHIN CONST. LIMITS*	LOCATION	
		HEIGHT (INCHES)	CONDITION		(NORTHING)	(EASTING)
256	GREEN ASH	5	FAIR	YES	491753.493	140785.313
257	WHITE OAK	24	FAIR	YES	491768.939	140743.758
258	WHITE OAK	26	FAIR	YES	491745.070	140771.179
259	WHITE OAK	10	FAIR	YES	491754.391	140761.754
260	BASSWOOD	14	FAIR	NO	491767.283	140795.836
261	PAPER BIRCH	6	FAIR	NO	491776.076	140794.345
262	ELM	10	FAIR	NO	491769.208	140807.354
263	BOXELDER	6	FAIR	NO	491780.621	140798.429
264	GREEN ASH	4	FAIR	NO	491781.468	140797.519
265	GREEN ASH	8	FAIR	NO	491782.522	140802.528
266	BLACK CHERRY	10	FAIR	NO	491792.102	140790.974
267	RED OAK	4	FAIR	NO	491796.537	140790.647
268	PAPER BIRCH	4	FAIR	YES	491739.163	140800.981
269	PAPER BIRCH	5	FAIR	YES	491728.542	140801.717
270	ELM	66	FAIR	YES	491730.789	140809.996
271	PAPER BIRCH	7	FAIR	NO	491760.291	140804.708
272	PAPER BIRCH	14	FAIR	YES	491759.184	140794.168
273	RED OAK	32	FAIR	NO	491739.760	140828.864
274	GREEN ASH	12	FAIR	NO	491734.273	140823.786
275	BLACK CHERRY	10	FAIR	NO	491725.788	140834.393
276	RED OAK	24	DEAD	YES	491723.109	140823.109
277	RED OAK	36	DEAD	YES	491711.628	140836.297
278	BOXELDER	6	FAIR	YES	491720.108	140844.052
279	RED OAK	36	DEAD	YES	491705.981	140847.674
280	ELM	12	FAIR	YES	491713.486	140856.525
281	ELM	14	FAIR	YES	491699.405	140854.870
282	BLACK CHERRY	4	FAIR	YES	491697.785	140844.136
283	RED OAK	8	FAIR	YES	491693.861	140823.175
284	RED OAK	6	FAIR	YES	491703.762	140796.485
285	PAPER BIRCH	5	FAIR	YES	491722.766	140809.041
286	COTTONWOOD	10	DEAD	YES	491699.582	140791.724
287	COTTONWOOD	14	FAIR	YES	491697.426	140792.747
288	COTTONWOOD	12	FAIR	YES	491692.407	140788.693
289	ELM	4	FAIR	YES	491702.902	140779.285
290	BLACK CHERRY	5	FAIR	YES	491685.412	140791.163
291	BLACK CHERRY	4	FAIR	YES	491687.434	140802.126
292	BLACK CHERRY	4	FAIR	YES	491682.591	140804.597
293	ELM	4	FAIR	YES	491676.369	140801.765
294	BIGTOOTH ASPEN	10	DEAD	YES	491677.085	140799.024
295	BLACK CHERRY	6	DEAD	YES	491678.732	140790.662
296	PAPER BIRCH	6	FAIR	YES	491673.991	140791.833
297	PAPER BIRCH	5	FAIR	YES	491680.274	140781.325
298	BIGTOOTH ASPEN	5	DEAD	YES	491688.116	140784.624

Southwest Light Rail Project
Opus Area Tree Survey Table
City of Minnetonka

SRF Consulting Group
April 9, 2014

ID #	TREE SPECIES	DIAMETER AT BREST		WITHIN CONST. LIMITS*	LOCATION	
		HEIGHT (INCHES)	CONDITION		(NORTHING)	(EASTING)
299	BIGTOOTH ASPEN	12	DEAD	YES	491688.912	140782.766
300	BLACK CHERRY	8	FAIR	YES	491702.085	140762.923
301	ELM	6	FAIR	NO	491699.667	140750.076
302	ELM	5	FAIR	NO	491711.543	140734.424
303	ELM	9	FAIR	NO	491700.156	140721.781
304	GREEN ASH	15	FAIR	NO	491677.434	140767.430
305	ELM	12	FAIR	NO	491682.797	140749.874
306	ELM	8	FAIR	NO	491673.577	140749.405
307	BUR OAK	4	FAIR	NO	491671.998	140755.457
308	BUR OAK	6	FAIR	NO	491665.313	140753.966
309	BUR OAK	6	FAIR	NO	491664.231	140757.613
310	ELM	5	FAIR	NO	491647.768	140768.930
311	BUR OAK	6	FAIR	NO	491655.225	140761.574
312	BUR OAK	7	FAIR	NO	491650.473	140771.745
313	ELM	4	FAIR	NO	491654.358	140764.335
314	ELM	7	FAIR	NO	491658.412	140765.225
315	BUR OAK	4	FAIR	NO	491668.947	140764.944
316	BUR OAK	12	FAIR	NO	491666.884	140765.636
317	ELM	4	FAIR	NO	491662.903	140769.777
318	ELM	12	FAIR	NO	491658.079	140771.241
319	BUR OAK	6	FAIR	NO	491649.510	140770.502
320	RED OAK	10	FAIR	NO	491645.346	140777.804
321	GREEN ASH	4	FAIR	NO	491642.906	140780.156
322	PAPER BIRCH	4	FAIR	NO	491656.079	140780.449
323	BIGTOOTH ASPEN	8	DEAD	NO	491653.874	140777.544
324	BLACK CHERRY	7	FAIR	NO	491650.161	140789.336
325	RED OAK	10	FAIR	NO	491640.345	140790.418
326	GREEN ASH	4	FAIR	NO	491644.735	140787.626
327	BLACK CHERRY	8	FAIR	NO	491634.537	140790.739
328	GREEN ASH	6	FAIR	NO	491635.451	140790.470
329	GREEN ASH	8	FAIR	NO	491639.366	140772.909
330	GREEN ASH	6	FAIR	NO	491617.555	140793.148
331	BLACK WALNUT	8	FAIR	NO	491606.611	140801.729
332	ELM	10	FAIR	NO	491606.558	140810.298
333	BIGTOOTH ASPEN	18	DEAD	YES	491647.767	140812.101
334	PAPER BIRCH	5	FAIR	YES	491668.001	140795.775
335	BLACK CHERRY	5	FAIR	YES	491677.223	140793.000
336	BIGTOOTH ASPEN	12	DEAD	YES	491681.745	140793.506
337	BUR OAK	10	FAIR	YES	491656.770	140808.439
338	RED OAK	14	DEAD	NO	491651.228	140797.251
339	RED OAK	15	DEAD	YES	491654.178	140811.899
340	ELM	5	FAIR	YES	491648.420	140815.486
341	ELM	6	FAIR	YES	491640.695	140819.186

Southwest Light Rail Project
Opus Area Tree Survey Table
 City of Minnetonka

SRF Consulting Group
 April 9, 2014

ID #	TREE SPECIES	DIAMETER AT BREST		WITHIN CONST. LIMITS*	LOCATION	
		HEIGHT (INCHES)	CONDITION		(NORTHING)	(EASTING)
342	GREEN ASH	4	FAIR	NO	491635.247	140817.056
343	BLACK CHERRY	14	FAIR	NO	491630.547	140820.783
344	PAPER BIRCH	8	FAIR	NO	491610.299	140840.149
345	BLACK WALNUT	6	FAIR	YES	491620.504	140840.796
346	PAPER BIRCH	10	FAIR	NO	491607.450	140841.407
347	RED OAK	15	FAIR	NO	491605.048	140848.009
348	RED OAK	10	FAIR	NO	491596.356	140855.410
349	PAPER BIRCH	5	FAIR	NO	491590.658	140838.897
350	RED OAK	5	FAIR	NO	491588.338	140842.676
351	RED OAK	20	FAIR	NO	491584.851	140855.755
352	ELM	6	FAIR	NO	491574.416	140850.216
353	ELM	4	FAIR	NO	491575.069	140841.805
354	BLACK CHERRY	14	FAIR	NO	491580.958	140822.588
355	PAPER BIRCH	13	FAIR	NO	491587.099	140865.174
356	RED OAK	6	FAIR	NO	491602.996	140842.978
357	PAPER BIRCH	5	FAIR	YES	491613.263	140857.653
358	PAPER BIRCH	12	FAIR	YES	491607.284	140858.498
359	PAPER BIRCH	14	FAIR	NO	491579.681	140812.978
360	BLACK CHERRY	8	FAIR	YES	491633.999	140830.609
361	GREEN ASH	6	FAIR	YES	491636.936	140861.744
362	ELM	4	FAIR	YES	491617.328	140884.434
363	ELM	5	FAIR	YES	491618.526	140906.492
364	WHITE OAK	36	FAIR	YES	491607.239	140932.898
365	GREEN ASH	6	FAIR	YES	491599.227	140911.758
366	PAPER BIRCH	14	FAIR	YES	491564.030	140918.018
367	PAPER BIRCH	12	FAIR	YES	491576.033	140884.246
368	PAPER BIRCH	9	FAIR	NO	491549.212	140893.031
369	PAPER BIRCH	12	FAIR	YES	491572.911	140905.545
370	PAPER BIRCH	14	FAIR	YES	491572.105	140896.920
371	PAPER BIRCH	6	FAIR	YES	491572.215	140902.302
372	RED OAK	10	FAIR	YES	491589.482	140914.712
373	BLACK CHERRY	10	FAIR	YES	491598.613	140878.818
374	BLACK CHERRY	7	FAIR	YES	491606.252	140894.807
375	WHITE OAK	30	FAIR	YES	491634.066	140887.929
376	BLACK WALNUT	6	FAIR	YES	491667.103	140853.368
377	BLACK CHERRY	5	FAIR	YES	491664.670	140849.205
378	PAPER BIRCH	12	FAIR	YES	491676.532	140863.047
379	PAPER BIRCH	6	FAIR	YES	491681.322	140852.566
380	BLACK CHERRY	10	FAIR	YES	491689.740	140852.161
381	RED OAK	32	DEAD	YES	491716.003	140853.732
382	RED OAK	36	DEAD	YES	491713.552	140831.919
383	SUGAR MAPLE	4	FAIR	YES	491676.473	140873.111
384	ELM	6	FAIR	YES	491697.351	140847.882

Southwest Light Rail Project
Opus Area Tree Survey Table
 City of Minnetonka

SRF Consulting Group
 April 9, 2014

ID #	TREE SPECIES	DIAMETER AT BREST		WITHIN CONST. LIMITS*	LOCATION	
		HEIGHT (INCHES)	CONDITION		(NORTHING)	(EASTING)
385	RED OAK	24	FAIR	YES	491672.463	140875.474
386	ELM	6	FAIR	YES	491654.474	140884.672
387	BASSWOOD	14	FAIR	YES	491659.811	140889.902
388	ELM	8	FAIR	YES	491651.657	140873.517
389	ELM	7	FAIR	YES	491658.932	140898.235
390	ELM	12	FAIR	YES	491619.391	140908.944
391	ELM	16	FAIR	YES	491619.948	140912.426
392	PAPER BIRCH	4	FAIR	YES	491618.770	140927.216
393	PAPER BIRCH	4	FAIR	YES	491606.143	140931.542
394	PAPER BIRCH	8	FAIR	YES	491604.893	140926.346
395	PAPER BIRCH	4	FAIR	YES	491614.570	140920.665
396	BLACK WALNUT	10	FAIR	YES	491592.044	140922.112
397	RED OAK	10	FAIR	YES	491598.825	140914.606
398	GREEN ASH	5	FAIR	YES	491579.232	140930.173
399	RED OAK	14	FAIR	YES	491590.588	140930.585
400	ELM	8	FAIR	YES	491601.244	140938.301
401	PAPER BIRCH	4	FAIR	YES	491590.056	140951.633
402	PAPER BIRCH	6	FAIR	YES	491583.408	140948.375
403	PAPER BIRCH	5	FAIR	YES	491595.834	140943.099
404	PAPER BIRCH	4	FAIR	YES	491591.706	140946.323
405	PAPER BIRCH	4	FAIR	YES	491571.351	140964.277
406	PAPER BIRCH	5	FAIR	YES	491579.838	140956.375
407	PAPER BIRCH	5	FAIR	YES	491578.530	140954.180
408	RED OAK	16	FAIR	YES	491570.396	140938.996
409	RED OAK	6	FAIR	YES	491582.928	140937.091
410	BLACK WALNUT	4	FAIR	YES	491550.788	140957.555
411	BLACK CHERRY	6	FAIR	YES	491568.280	140949.086
412	ELM	10	FAIR	YES	491539.287	140965.452
413	RED OAK	28	FAIR	YES	491535.368	140969.740
414	RED OAK	32	FAIR	YES	491539.109	140956.905
415	GREEN ASH	5	FAIR	YES	491534.574	140952.057
416	GREEN ASH	6	FAIR	YES	491527.927	140950.992
417	GREEN ASH	8	FAIR	YES	491543.636	140944.669
418	RED OAK	36	FAIR	YES	491505.221	140975.322
419	BLACK WALNUT	8	FAIR	YES	491496.781	140973.968
420	GREEN ASH	5	FAIR	YES	491504.019	140973.857
421	ELM	4	FAIR	YES	491502.610	140954.051
422	BLACK CHERRY	4	FAIR	YES	491509.921	140939.448
423	RED OAK	12	FAIR	YES	491496.530	140949.385
424	QUAKING ASPEN	8	FAIR	YES	491515.134	140932.256
425	ELM	8	FAIR	YES	491486.793	140957.924
426	GREEN ASH	5	FAIR	YES	491474.382	140963.681
427	MOUNTAIN ASH	7	FAIR	YES	491479.182	140958.014

Southwest Light Rail Project
Opus Area Tree Survey Table
City of Minnetonka

SRF Consulting Group
April 9, 2014

ID #	TREE SPECIES	DIAMETER AT BREST		WITHIN CONST. LIMITS*	LOCATION	
		HEIGHT (INCHES)	CONDITION		(NORTHING)	(EASTING)
428	RED OAK	36	FAIR	YES	491471.005	140948.415
429	COTTONWOOD	14	FAIR	YES	491474.873	140939.973
430	GREEN ASH	10	FAIR	NO	491490.126	140916.140
431	BUR OAK	6	FAIR	NO	491505.345	140899.347
432	GREEN ASH	8	FAIR	NO	491508.603	140900.866
433	GREEN ASH	6	FAIR	NO	491513.626	140918.527
434	RED OAK	15	FAIR	NO	491530.356	140869.897
435	RED OAK	5	FAIR	NO	491530.967	140895.103
436	RED OAK	8	FAIR	NO	491533.273	140896.414
437	RED OAK	12	FAIR	NO	491525.784	140869.903
438	RED OAK	24	FAIR	NO	491526.458	140878.791
439	GREEN ASH	12	FAIR	NO	491526.048	140855.767
440	PAPER BIRCH	10	FAIR	NO	491533.493	140862.799
441	ELM	9	FAIR	NO	491545.185	140864.458
442	MOUNTAIN ASH	12	FAIR	NO	491546.122	140860.144
443	BOXELDER	14	FAIR	NO	491521.838	140832.854
444	ELM	14	FAIR	NO	491513.355	140839.989
445	ELM	12	FAIR	NO	491500.082	140849.783
446	ELM	8	FAIR	NO	491501.433	140859.810
447	ELM	12	FAIR	NO	491490.971	140852.335
448	GREEN ASH	12	FAIR	NO	491494.570	140861.685
449	ELM	14	FAIR	NO	491482.329	140873.118
450	ELM	12	FAIR	NO	491465.254	140886.740
451	RED OAK	34	FAIR	YES	491453.021	140905.766
452	GREEN ASH	10	FAIR	YES	491438.472	140914.641
453	BOXELDER	0	FAIR	YES	491429.026	140948.486
454	QUAKING ASPEN	5	FAIR	YES	491442.466	140964.909
455	BOXELDER	5	FAIR	YES	491436.077	140977.760
456	COTTONWOOD	12	FAIR	YES	491422.472	140970.891
457	BOXELDER	10	FAIR	YES	491423.678	140964.873
458	QUAKING ASPEN	6	FAIR	YES	491418.404	140966.839
459	QUAKING ASPEN	8	FAIR	YES	491416.380	140983.936
460	BLACK CHERRY	9	FAIR	YES	491414.919	140971.818
461	QUAKING ASPEN	5	FAIR	YES	491411.212	140976.296
462	ELM	7	FAIR	YES	491413.731	140978.869
463	RED OAK	12	FAIR	YES	491404.024	140980.211
464	RED OAK	40	FAIR	NO	491400.495	141003.722
465	RED OAK	18	FAIR	NO	491367.652	140992.151
466	RED OAK	12	FAIR	NO	491370.406	140982.661
467	RED OAK	10	FAIR	YES	491419.429	141012.867
468	RED OAK	16	FAIR	YES	491421.150	141018.334
469	RED OAK	4	FAIR	YES	491416.037	141013.401
470	RED OAK	12	FAIR	YES	491418.020	141006.710

Southwest Light Rail Project
Opus Area Tree Survey Table
 City of Minnetonka

SRF Consulting Group
 April 9, 2014

ID #	TREE SPECIES	DIAMETER AT BREAST		WITHIN CONST. LIMITS*	LOCATION	
		HEIGHT (INCHES)	CONDITION		(NORTHING)	(EASTING)
471	GREEN ASH	10	FAIR	YES	491425.430	140989.898
472	BASSWOOD	12	FAIR	YES	491422.030	140987.562
473	QUAKING ASPEN	8	FAIR	YES	491425.054	140982.505
474	QUAKING ASPEN	8	FAIR	YES	491430.453	140973.494
475	QUAKING ASPEN	8	FAIR	YES	491440.127	140982.374
476	QUAKING ASPEN	9	FAIR	YES	491445.380	140986.611
477	BOXELDER	5	FAIR	YES	491456.937	140976.128
478	RED OAK	10	FAIR	YES	491447.762	141002.225
479	RED OAK	6	FAIR	YES	491440.355	141005.306
480	RED OAK	14	FAIR	YES	491447.764	141016.090
481	RED OAK	12	FAIR	YES	491443.452	141011.024
482	PAPER BIRCH	8	DEAD	YES	491436.540	141013.833
483	RED OAK	16	FAIR	YES	491433.549	141011.747
484	RED OAK	10	FAIR	YES	491440.647	141004.193
485	RED OAK	14	FAIR	YES	491423.745	141009.598
486	RED OAK	15	FAIR	YES	491416.075	141027.161
487	RED OAK	10	FAIR	NO	491415.836	141014.014
488	BLACK CHERRY	4	FAIR	YES	491418.986	141028.817
489	RED OAK	16	FAIR	YES	491416.150	141034.124
490	RED OAK	10	FAIR	YES	491419.113	141040.756
491	RED OAK	5	FAIR	YES	491442.787	141018.123
492	IRONWOOD	8	FAIR	YES	491446.850	141021.487
493	RED OAK	18	FAIR	YES	491453.813	141011.580
494	GREEN ASH	6	FAIR	YES	491472.344	141001.432
495	RED OAK	10	FAIR	YES	491450.769	141032.657
496	RED OAK	8	FAIR	YES	491439.591	141036.248
497	BOXELDER	5	FAIR	YES	491475.215	141027.414
498	QUAKING ASPEN	12	FAIR	YES	491487.291	141009.013
499	QUAKING ASPEN	10	FAIR	YES	491493.359	141017.467
500	ELM	10	DEAD	YES	491438.366	141044.319
501	BLACK CHERRY	16	FAIR	YES	491443.132	141059.762
502	RED OAK	12	FAIR	YES	491436.004	141058.208
503	RED OAK	8	FAIR	YES	491440.325	141064.345
504	RED OAK	12	FAIR	YES	491434.982	141050.263
505	RED OAK	16	FAIR	YES	491447.521	141046.577
506	RED OAK	10	FAIR	YES	491435.426	141074.457
507	RED OAK	10	FAIR	YES	491343.045	141123.648
508	RED OAK	16	FAIR	YES	491402.240	141063.180
509	ELM	8	FAIR	YES	491398.617	141077.455
510	BLACK WALNUT	10	FAIR	YES	491397.391	141069.538
511	ELM	8	FAIR	YES	491408.315	141092.975
512	RED OAK	28	FAIR	YES	491407.836	141105.377
513	BLACK WALNUT	4	FAIR	YES	491454.448	141066.649

Southwest Light Rail Project
Opus Area Tree Survey Table
City of Minnetonka

SRF Consulting Group
April 9, 2014

ID #	TREE SPECIES	DIAMETER AT BREST		WITHIN CONST. LIMITS*	LOCATION	
		HEIGHT (INCHES)	CONDITION		(NORTHING)	(EASTING)
514	QUAKING ASPEN	10	FAIR	YES	491489.739	141032.002
515	QUAKING ASPEN	10	FAIR	YES	491496.880	141033.516
516	QUAKING ASPEN	8	FAIR	YES	491495.347	141034.861
517	BLACK WALNUT	10	FAIR	YES	491399.434	141066.064
518	ELM	9	FAIR	YES	491389.717	141101.119
519	RED OAK	16	FAIR	YES	491403.786	141067.169
520	RED OAK	6	FAIR	YES	491409.102	141059.909
521	RED OAK	12	FAIR	YES	491408.533	141042.698
522	RED OAK	10	FAIR	YES	491420.712	141053.242
523	GREEN ASH	4	FAIR	YES	491424.559	141040.286
524	RED OAK	15	FAIR	YES	491439.484	141033.620
525	RED OAK	8	FAIR	YES	491397.371	141038.893
526	RED OAK	14	FAIR	YES	491389.165	141040.317
527	RED OAK	18	FAIR	YES	491387.888	141041.730
528	RED OAK	8	FAIR	YES	491374.741	141055.542
529	RED OAK	14	FAIR	NO	491375.749	141045.334
530	RED OAK	14	FAIR	NO	491382.882	141036.257
531	RED OAK	6	FAIR	NO	491390.210	141018.281
532	RED OAK	14	FAIR	NO	491382.584	141028.709
533	IRONWOOD	10	FAIR	NO	491382.773	141010.289
534	GREEN ASH	14	FAIR	NO	491375.510	141016.610
535	RED OAK	10	FAIR	NO	491365.822	141009.719
536	RED OAK	18	FAIR	NO	491370.749	140999.445
537	ELM	10	FAIR	NO	491352.778	140979.812
538	RED OAK	20	FAIR	NO	491315.380	140981.838
539	ELM	5	FAIR	NO	491340.472	141006.791
540	RED OAK	20	FAIR	NO	491302.129	141000.644
541	RED OAK	8	FAIR	NO	491299.711	141021.779
542	RED OAK	15	FAIR	NO	491316.745	141019.765
543	RED OAK	14	FAIR	NO	491314.987	141028.517
544	RED OAK	16	FAIR	NO	491299.984	141024.470
545	ELM	5	FAIR	NO	491291.124	141043.740
546	RED OAK	30	FAIR	NO	491256.694	141034.041
547	GREEN ASH	10	FAIR	NO	491266.278	141062.107
548	RED OAK	12	FAIR	NO	491315.560	141045.002
549	RED OAK	13	FAIR	NO	491313.850	141045.640
550	BLACK CHERRY	10	FAIR	NO	491310.793	141039.725
551	RED OAK	12	FAIR	NO	491320.036	141051.076
552	RED OAK	4	FAIR	NO	491324.585	141058.319
553	RED OAK	15	FAIR	NO	491320.053	141059.120
554	RED OAK	20	FAIR	NO	491311.132	141051.679
555	GREEN ASH	10	FAIR	NO	491324.685	141051.139
556	RED OAK	15	FAIR	NO	491328.753	141022.198

Southwest Light Rail Project
Opus Area Tree Survey Table
City of Minnetonka

SRF Consulting Group
April 9, 2014

ID #	TREE SPECIES	DIAMETER AT BREST		WITHIN CONST. LIMITS*	LOCATION	
		HEIGHT (INCHES)	CONDITION		(NORTHING)	(EASTING)
557	RED OAK	18	FAIR	NO	491309.274	141021.944
558	RED OAK	12	FAIR	NO	491339.634	141040.831
559	RED OAK	10	FAIR	NO	491333.662	141045.920
560	RED OAK	18	FAIR	NO	491343.761	141041.856
561	RED OAK	15	FAIR	NO	491357.727	141046.205
562	RED OAK	12	FAIR	NO	491347.517	141055.345
563	RED OAK	16	FAIR	NO	491340.346	141069.448
564	RED OAK	4	FAIR	NO	491342.858	141062.023
565	RED OAK	12	FAIR	YES	491352.635	141075.938
566	RED OAK	5	FAIR	YES	491364.979	141062.841
567	COTTONWOOD	16	FAIR	YES	491342.243	141082.964
568	RED OAK	8	FAIR	NO	491317.923	141077.729
569	ELM	8	FAIR	NO	491311.099	141081.695
570	ELM	10	FAIR	NO	491320.678	141088.633
571	RED OAK	16	FAIR	NO	491308.081	141092.487
572	RED OAK	14	FAIR	NO	491304.527	141085.552
573	RED OAK	8	FAIR	NO	491303.316	141095.105
574	RED OAK	12	FAIR	NO	491299.076	141109.186
575	ELM	6	FAIR	NO	491286.711	141077.905
576	RED OAK	16	FAIR	NO	491305.286	141098.237
577	RED OAK	14	FAIR	YES	491312.104	141113.533
578	RED OAK	4	FAIR	YES	491305.685	141119.829
579	BUR OAK	6	FAIR	YES	491305.150	141122.039
580	RED OAK	10	FAIR	YES	491321.806	141120.092
581	RED OAK	14	FAIR	YES	491317.841	141128.200
582	ELM	6	FAIR	YES	491314.835	141132.966
583	RED OAK	8	FAIR	YES	491330.338	141121.455
584	RED OAK	40	FAIR	YES	491365.279	141107.664
585	RED OAK	30	FAIR	YES	491381.745	141097.965
586	QUAKING ASPEN	16	FAIR	YES	491350.460	141103.250
587	RED OAK	30	FAIR	YES	491392.559	141129.208
588	IRONWOOD	8	FAIR	YES	491366.949	141121.058
589	ELM	8	FAIR	YES	491367.883	141135.632
590	MOUNTAIN ASH	5	FAIR	YES	491355.786	141131.705
591	WHITE OAK	24	FAIR	YES	491353.431	141147.175
592	ELM	8	FAIR	YES	491354.002	141157.485
593	RED OAK	8	FAIR	YES	491331.231	141125.644
594	ELM	13	FAIR	YES	491310.992	141107.954
595	RED OAK	24	FAIR	NO	491323.993	141091.244
596	RED OAK	8	FAIR	NO	491303.205	141088.221
597	ELM	9	FAIR	NO	491306.374	141083.611
598	RED OAK	26	FAIR	NO	491303.685	141066.222
599	ELM	4	FAIR	NO	491296.546	141048.956

Southwest Light Rail Project
Opus Area Tree Survey Table
 City of Minnetonka

SRF Consulting Group
 April 9, 2014

ID #	TREE SPECIES	DIAMETER AT BREAST		WITHIN CONST. LIMITS*	LOCATION	
		HEIGHT (INCHES)	CONDITION		(NORTHING)	(EASTING)
600	RED OAK	15	FAIR	NO	491290.086	141072.190
601	BIGTOOTH ASPEN	12	FAIR	YES	491308.560	141122.775
602	RED OAK	6	FAIR	NO	491291.431	141102.591
603	WHITE OAK	30	FAIR	YES	491321.157	141150.063
604	WHITE OAK	14	FAIR	NO	491338.826	141194.692
605	RED OAK	36	FAIR	NO	491342.462	141183.519
606	ELM	8	FAIR	YES	491329.797	141180.764
607	RED OAK	30	FAIR	YES	491324.980	141188.667
608	ELM	12	FAIR	YES	491315.861	141190.205
609	ELM	6	FAIR	YES	491314.923	141195.855
610	ELM	6	FAIR	NO	491325.255	141203.862
611	RED OAK	15	FAIR	YES	491309.650	141202.265
612	WHITE OAK	10	FAIR	YES	491301.641	141213.700
613	PAPER BIRCH	16	FAIR	YES	491283.257	141204.382
614	RED OAK	12	FAIR	YES	491312.423	141175.419
615	WHITE OAK	16	FAIR	YES	491320.116	141174.952
616	RED OAK	12	FAIR	YES	491296.081	141171.511
617	PAPER BIRCH	10	FAIR	YES	491296.261	141166.958
618	RED OAK	8	FAIR	YES	491285.406	141168.717
619	BLACK CHERRY	8	FAIR	YES	491280.854	141181.766
620	PAPER BIRCH	15	FAIR	YES	491267.421	141174.932
621	BLACK CHERRY	4	FAIR	YES	491261.672	141168.928
622	GREEN ASH	10	FAIR	YES	491274.491	141158.004
623	QUAKING ASPEN	12	FAIR	YES	491274.575	141155.949
624	ELM	5	FAIR	YES	491278.530	141136.702
625	RED OAK	16	FAIR	NO	491263.035	141133.420
626	RED OAK	6	FAIR	NO	491266.090	141122.848
627	RED OAK	9	FAIR	NO	491267.650	141116.002
628	RED OAK	14	FAIR	NO	491247.860	141122.555
629	RED OAK	6	FAIR	NO	491248.271	141115.992
630	WHITE OAK	8	FAIR	NO	491237.746	141112.404
631	SUGAR MAPLE	12	FAIR	NO	491243.121	141111.223
632	BLACK CHERRY	6	FAIR	NO	491239.185	141110.183
633	RED OAK	6	FAIR	NO	491245.691	141099.198
634	RED OAK	16	FAIR	NO	491256.725	141076.913
635	BIGTOOTH ASPEN	12	FAIR	NO	491253.380	141101.938
636	BLACK CHERRY	16	FAIR	NO	491254.086	141085.585
637	BIGTOOTH ASPEN	8	FAIR	NO	491257.367	141074.304
638	QUAKING ASPEN	10	FAIR	NO	491255.039	141077.564
639	QUAKING ASPEN	9	FAIR	NO	491240.733	141078.512
640	QUAKING ASPEN	10	FAIR	NO	491232.842	141066.259
641	RED OAK	40	FAIR	NO	491244.048	141031.736
642	BLACK CHERRY	16	FAIR	NO	491206.684	141074.474

Southwest Light Rail Project
Opus Area Tree Survey Table
City of Minnetonka

SRF Consulting Group
April 9, 2014

ID #	TREE SPECIES	DIAMETER AT BREAST		WITHIN CONST. LIMITS*	LOCATION	
		HEIGHT (INCHES)	CONDITION		(NORTHING)	(EASTING)
643	RED OAK	18	FAIR	NO	491198.633	141087.713
644	BLACK CHERRY	15	FAIR	NO	491214.756	141086.608
645	RED OAK	22	FAIR	NO	491218.952	141117.372
646	BLACK CHERRY	4	FAIR	NO	491216.198	141108.574
647	RED OAK	20	FAIR	NO	491217.307	141117.505
648	RED OAK	10	FAIR	NO	491172.822	141116.771
649	WHITE OAK	16	FAIR	NO	491147.809	141124.466
650	BASSWOOD	24	FAIR	NO	491149.760	141117.847
651	BUR OAK	4	FAIR	NO	491136.802	141113.491
652	BLACK CHERRY	12	FAIR	NO	491175.298	141136.148
653	QUAKING ASPEN	7	FAIR	NO	491182.721	141141.910
654	QUAKING ASPEN	8	FAIR	NO	491199.473	141130.129
655	ELM	6	FAIR	NO	491194.423	141135.775
656	SUGAR MAPLE	8	FAIR	NO	491199.034	141135.904
657	RED OAK	24	FAIR	NO	491215.948	141118.641
658	GREEN ASH	6	FAIR	NO	491218.092	141125.881
659	ELM	6	FAIR	NO	491218.922	141140.072
660	RED OAK	15	FAIR	NO	491226.572	141142.502
661	RED OAK	18	FAIR	NO	491203.946	141162.600
662	GREEN ASH	18	FAIR	NO	491196.320	141157.053
663	ELM	4	FAIR	NO	491198.567	141164.959
664	BIGTOOTH ASPEN	8	FAIR	NO	491207.943	141154.703
665	ELM	5	FAIR	NO	491195.473	141159.407
666	WHITE OAK	15	FAIR	NO	491210.125	141155.668
667	RED OAK	22	FAIR	NO	491208.668	141181.096
668	BLACK CHERRY	6	FAIR	YES	491230.749	141197.310
669	BIGTOOTH ASPEN	6	FAIR	YES	491240.973	141184.085
670	RED OAK	8	FAIR	YES	491238.197	141196.868
671	PAPER BIRCH	6	FAIR	YES	491238.640	141216.244
672	BIGTOOTH ASPEN	7	FAIR	YES	491254.249	141201.941
673	RED OAK	15	FAIR	YES	491263.503	141197.856
674	BIGTOOTH ASPEN	12	FAIR	YES	491257.896	141182.822
675	RED OAK	5	FAIR	YES	491269.781	141171.633
676	RED OAK	8	FAIR	YES	491260.861	141176.499
677	RED OAK	14	FAIR	YES	491256.861	141172.505
678	BIGTOOTH ASPEN	0	FAIR	YES	491250.258	141162.054
679	RED OAK	10	FAIR	NO	491242.467	141158.788
680	RED OAK	8	FAIR	YES	491266.439	141196.157
681	RED OAK	6	FAIR	YES	491277.034	141212.416
682	RED OAK	5	FAIR	YES	491280.363	141208.466
683	RED OAK	12	FAIR	YES	491287.441	141214.586
684	RED OAK	7	FAIR	YES	491287.566	141225.855
685	RED OAK	20	FAIR	YES	491272.766	141233.150



Southwest Light Rail Project
Opus Area Tree Survey Table
City of Minnetonka

SRF Consulting Group
April 9, 2014

ID #	TREE SPECIES	DIAMETER AT BREAST		WITHIN CONST. LIMITS*	LOCATION	
		HEIGHT (INCHES)	CONDITION		(NORTHING)	(EASTING)
686	RED OAK	15	FAIR	YES	491273.035	141232.065
687	RED OAK	15	FAIR	YES	491262.978	141233.918
688	RED OAK	20	FAIR	YES	491273.247	141251.382
689	BASSWOOD	24	FAIR	YES	491254.080	141270.702
690	RED OAK	18	FAIR	YES	491237.946	141258.121
691	BASSWOOD	20	FAIR	YES	491208.669	141264.481
692	RED OAK	13	FAIR	YES	491216.879	141267.101
693	BUR OAK	4	FAIR	YES	491209.974	141279.651
694	RED OAK	18	FAIR	YES	491215.065	141296.706
695	PAPER BIRCH	14	FAIR	YES	491210.687	141314.102
696	BASSWOOD	12	FAIR	YES	491207.470	141309.418
697	BUR OAK	6	FAIR	YES	491204.381	141318.571
698	BUR OAK	6	FAIR	YES	491191.590	141319.787
699	BLACK WALNUT	15	FAIR	YES	491195.130	141325.188
700	BLACK CHERRY	7	FAIR	YES	491192.103	141285.829
701	BUR OAK	40	FAIR	YES	491166.854	141289.890
702	BLACK WALNUT	4	FAIR	YES	491175.050	141284.524
703	RED OAK	15	FAIR	YES	491196.556	141267.771
704	RED OAK	26	FAIR	YES	491201.641	141264.780
705	RED OAK	8	FAIR	YES	491188.626	141256.271
706	RED OAK	24	FAIR	YES	491198.035	141253.362
707	BUR OAK	66	FAIR	YES	491204.566	141249.940
708	RED OAK	36	FAIR	YES	491200.199	141237.382
709	RED OAK	10	FAIR	YES	491211.449	141207.674
710	BLACK CHERRY	12	FAIR	YES	491228.421	141238.991
711	BLACK CHERRY	8	FAIR	YES	491234.547	141221.520
712	BLACK CHERRY	7	FAIR	YES	491219.983	141214.484
713	RED OAK	4	FAIR	YES	491204.172	141213.350
714	BLACK CHERRY	5	FAIR	NO	491195.344	141202.665
715	RED OAK	8	FAIR	NO	491198.313	141200.571
716	GREEN ASH	14	FAIR	NO	491188.751	141194.747
717	BLACK CHERRY	8	FAIR	NO	491185.668	141204.304
718	BLACK CHERRY	12	FAIR	NO	491181.395	141210.541
719	RED OAK	15	FAIR	YES	491175.308	141240.025
720	BUR OAK	10	FAIR	YES	491183.025	141237.458
721	BUR OAK	10	FAIR	YES	491159.117	141244.167
722	GREEN ASH	14	FAIR	NO	491147.984	141230.385
723	BLACK CHERRY	8	FAIR	NO	491168.005	141216.333
724	BUR OAK	0	FAIR	NO	491138.954	141223.459
725	BUR OAK	16	FAIR	NO	491127.344	141227.893
726	BUR OAK	10	FAIR	NO	491128.499	141261.657
727	RED OAK	20	FAIR	YES	491135.829	141281.392
728	RED OAK	8	FAIR	NO	491117.886	141257.786

Southwest Light Rail Project
Opus Area Tree Survey Table
 City of Minnetonka

SRF Consulting Group
 April 9, 2014

ID #	TREE SPECIES	DIAMETER AT BREST		WITHIN CONST. LIMITS*	LOCATION	
		HEIGHT (INCHES)	CONDITION		(NORTHING)	(EASTING)
729	BUR OAK	12	FAIR	YES	491120.445	141277.520
730	RED OAK	48	FAIR	NO	491105.265	141267.090
731	BUR OAK	10	FAIR	NO	491121.135	141248.966
732	BUR OAK	15	FAIR	NO	491114.318	141231.121
733	BUR OAK	6	FAIR	NO	491153.181	141224.732
734	BLACK WALNUT	15	FAIR	NO	491152.530	141222.535
735	GREEN ASH	5	FAIR	NO	491156.388	141185.565
736	GREEN ASH	4	FAIR	NO	491160.911	141181.462
737	RED OAK	10	FAIR	NO	491176.419	141186.566
738	BOXELDER	16	FAIR	NO	491131.585	141195.997
739	IRONWOOD	7	FAIR	NO	491111.953	141200.556
740	RED OAK	28	FAIR	NO	491088.467	141187.507
741	BOXELDER	16	FAIR	NO	491080.260	141199.935
742	BOXELDER	20	FAIR	NO	491037.651	141180.430
743	CRABAPPLE	8	FAIR	NO	491059.632	141142.560
744	CRABAPPLE	8	FAIR	NO	491077.143	141136.754
745	CRABAPPLE	8	FAIR	NO	491084.748	141125.131
746	BOXELDER	18	FAIR	NO	491064.498	141232.800
747	BUR OAK	8	FAIR	NO	491058.379	141241.253
748	BUR OAK	12	FAIR	NO	491043.772	141236.161
749	MOUNTAIN ASH	18	FAIR	NO	491006.666	141244.234
750	PAPER BIRCH	18	FAIR	NO	490973.796	141289.674
751	BIGTOOTH ASPEN	16	FAIR	NO	490935.253	141282.976
752	BIGTOOTH ASPEN	15	FAIR	NO	490939.902	141291.864
753	BIGTOOTH ASPEN	18	FAIR	NO	490929.538	141285.234
754	BIGTOOTH ASPEN	15	FAIR	NO	490917.713	141298.062
755	BIGTOOTH ASPEN	12	FAIR	NO	490905.152	141289.688
756	BIGTOOTH ASPEN	20	FAIR	NO	490902.472	141296.861
757	BLACK CHERRY	14	FAIR	NO	491044.583	141289.253
758	ELM	14	FAIR	NO	491031.414	141289.413
759	BOXELDER	8	FAIR	NO	491057.230	141286.703
760	BOXELDER	10	FAIR	NO	491067.845	141293.609
761	BLACK CHERRY	18	FAIR	NO	491069.434	141310.651
762	BOXELDER	6	FAIR	NO	491094.676	141278.906
763	BOXELDER	6	FAIR	NO	491092.493	141276.880
764	GREEN ASH	12	FAIR	YES	491093.600	141309.016
765	HACKBERRY	12	FAIR	YES	491101.072	141316.360
766	BOXELDER	10	FAIR	YES	491087.245	141314.263
767	RED PINE	12	FAIR	YES	491090.155	141325.592
768	RED PINE	10	FAIR	YES	491092.652	141334.218
769	BUR OAK	8	FAIR	YES	491079.688	141339.709
770	BUR OAK	10	FAIR	YES	491117.476	141326.864
771	BUR OAK	12	FAIR	YES	491120.659	141310.833

ID #	TREE SPECIES	DIAMETER AT BREAST		WITHIN CONST. LIMITS*	LOCATION	
		HEIGHT (INCHES)	CONDITION		(NORTHING)	(EASTING)
772	BUR OAK	10	FAIR	YES	491133.175	141313.029
773	BUR OAK	10	FAIR	YES	491133.678	141308.564
774	BUR OAK	9	FAIR	YES	491130.601	141312.796
775	BUR OAK	6	FAIR	YES	491134.991	141300.186
776	BUR OAK	10	FAIR	YES	491129.046	141291.798
777	RED OAK	15	FAIR	YES	491144.015	141295.723
778	BUR OAK	6	FAIR	YES	491150.813	141291.170
779	BOXELDER	10	FAIR	YES	491152.207	141299.479
780	BLACK WALNUT	5	FAIR	YES	491154.735	141307.177
781	BLACK CHERRY	10	FAIR	YES	491170.431	141297.201
782	BUR OAK	8	FAIR	YES	491155.255	141317.046
783	BUR OAK	4	FAIR	YES	491158.819	141327.760
784	RED OAK	18	FAIR	YES	491141.746	141314.983
785	BUR OAK	9	FAIR	YES	491144.146	141318.253
786	BUR OAK	6	FAIR	YES	491141.582	141343.674
787	BUR OAK	5	FAIR	YES	491138.338	141343.252
788	BLACK CHERRY	20	FAIR	YES	491152.988	141369.895
789	BOXELDER	18	FAIR	YES	491116.685	141356.699
790	BUR OAK	6	FAIR	YES	491105.866	141361.640
791	BIGTOOTH ASPEN	8	FAIR	YES	491096.687	141382.174
792	BIGTOOTH ASPEN	14	FAIR	YES	491094.880	141398.341
793	BIGTOOTH ASPEN	4	FAIR	YES	491104.516	141404.611
794	BIGTOOTH ASPEN	8	FAIR	YES	491103.799	141410.743
795	BIGTOOTH ASPEN	8	FAIR	YES	491091.545	141417.029
796	BIGTOOTH ASPEN	15	FAIR	YES	491090.786	141421.187
797	BIGTOOTH ASPEN	8	FAIR	YES	491089.639	141421.373
798	BOXELDER	36	DEAD	YES	491060.279	141376.042
799	BOXELDER	30	DEAD	YES	491071.850	141354.275
800	BOXELDER	5	FAIR	YES	491055.927	141352.160
801	BOXELDER	8	FAIR	NO	491034.311	141338.406
802	BOXELDER	12	FAIR	NO	491036.805	141340.217
803	BOXELDER	8	FAIR	NO	491037.749	141334.759
804	BOXELDER	20	FAIR	NO	491022.939	141320.937
805	BOXELDER	4	FAIR	NO	491015.880	141316.453
806	AMUR MAPLE	14	FAIR	NO	491019.174	141313.556
807	BOXELDER	12	FAIR	NO	491029.111	141296.830
808	BOXELDER	8	FAIR	NO	491034.444	141294.278
809	BOXELDER	8	FAIR	NO	491007.725	141341.658
810	CRABAPPLE	14	FAIR	NO	490974.899	141362.330
811	CRABAPPLE	8	FAIR	NO	490975.884	141374.774
812	BIGTOOTH ASPEN	16	FAIR	NO	490944.110	141350.900
813	MOUNTAIN ASH	24	FAIR	NO	490945.014	141326.887
814	BIGTOOTH ASPEN	16	FAIR	NO	490937.657	141309.560

Southwest Light Rail Project
Opus Area Tree Survey Table
City of Minnetonka

SRF Consulting Group
April 9, 2014

ID #	TREE SPECIES	DIAMETER AT BREAST		WITHIN CONST. LIMITS*	LOCATION	
		HEIGHT (INCHES)	CONDITION		(NORTHING)	(EASTING)
815	BIGTOOTH ASPEN	8	FAIR	NO	490930.469	141328.047
816	BIGTOOTH ASPEN	18	FAIR	NO	490931.099	141314.533
817	BIGTOOTH ASPEN	12	FAIR	NO	490920.730	141320.258
818	BIGTOOTH ASPEN	8	FAIR	NO	490926.033	141330.283
819	BIGTOOTH ASPEN	12	FAIR	NO	490921.960	141336.401
820	BIGTOOTH ASPEN	14	FAIR	NO	490927.317	141347.561
821	BIGTOOTH ASPEN	12	FAIR	NO	490934.427	141349.016
822	GREEN ASH	12	FAIR	NO	490913.520	141375.952
823	QUAKING ASPEN	6	FAIR	NO	490880.656	141350.786
824	QUAKING ASPEN	6	FAIR	NO	490876.441	141354.313
825	QUAKING ASPEN	8	FAIR	NO	490867.095	141355.517
826	ELM	16	FAIR	NO	490877.361	141377.091
827	QUAKING ASPEN	10	FAIR	NO	490867.681	141382.676
828	QUAKING ASPEN	14	FAIR	NO	490866.733	141389.611
829	QUAKING ASPEN	10	FAIR	NO	490869.680	141394.883
830	QUAKING ASPEN	14	FAIR	NO	490862.913	141396.662
831	RED OAK	20	FAIR	NO	490858.577	141409.071
832	QUAKING ASPEN	10	FAIR	NO	490865.251	141425.298
833	RED OAK	10	FAIR	NO	490874.246	141428.501
834	BLACK CHERRY	16	FAIR	NO	490907.481	141429.828
835	QUAKING ASPEN	12	FAIR	NO	490928.158	141426.166
836	BIGTOOTH ASPEN	12	FAIR	YES	490956.889	141431.286
837	BIGTOOTH ASPEN	8	FAIR	YES	490999.033	141411.085
838	BIGTOOTH ASPEN	12	FAIR	YES	491005.643	141404.840
839	BIGTOOTH ASPEN	9	FAIR	YES	491002.524	141414.731
840	BIGTOOTH ASPEN	4	FAIR	YES	490984.563	141408.434
841	BIGTOOTH ASPEN	6	FAIR	YES	490984.256	141410.678
842	BIGTOOTH ASPEN	13	FAIR	YES	490979.392	141407.580
843	BIGTOOTH ASPEN	12	FAIR	YES	490982.742	141414.675
844	BIGTOOTH ASPEN	10	FAIR	YES	490984.383	141410.582
845	BIGTOOTH ASPEN	9	FAIR	YES	490982.559	141419.096
846	BIGTOOTH ASPEN	10	FAIR	YES	490985.822	141414.581
847	BIGTOOTH ASPEN	8	FAIR	YES	490984.884	141415.568
848	BIGTOOTH ASPEN	12	FAIR	YES	490979.290	141414.418
849	BIGTOOTH ASPEN	6	FAIR	YES	490983.869	141429.208
850	BIGTOOTH ASPEN	10	FAIR	YES	490981.806	141431.658
851	BIGTOOTH ASPEN	5	FAIR	YES	490973.051	141426.263
852	BIGTOOTH ASPEN	8	FAIR	YES	490967.317	141436.147
853	BIGTOOTH ASPEN	10	FAIR	YES	490967.440	141436.923
854	BOXELDER	4	FAIR	YES	490959.731	141434.009
855	BIGTOOTH ASPEN	12	FAIR	NO	490956.619	141420.097
856	BOXELDER	5	FAIR	YES	490948.330	141435.278
857	BIGTOOTH ASPEN	8	FAIR	NO	490944.453	141431.407

ID #	TREE SPECIES	DIAMETER AT BREST		WITHIN CONST. LIMITS*	LOCATION	
		HEIGHT (INCHES)	CONDITION		(NORTHING)	(EASTING)
858	BIGTOOTH ASPEN	6	FAIR	NO	490948.361	141415.038
859	BIGTOOTH ASPEN	5	FAIR	NO	490927.175	141420.051
860	BIGTOOTH ASPEN	14	FAIR	NO	490945.227	141398.662
861	BIGTOOTH ASPEN	8	FAIR	NO	490941.733	141397.279
862	BIGTOOTH ASPEN	8	FAIR	NO	490953.940	141392.183
863	BIGTOOTH ASPEN	10	FAIR	NO	490959.209	141395.323
864	BIGTOOTH ASPEN	10	FAIR	NO	490956.996	141385.009
865	BIGTOOTH ASPEN	11	FAIR	NO	490962.559	141384.823
866	BIGTOOTH ASPEN	12	FAIR	NO	490945.437	141388.211
867	BIGTOOTH ASPEN	10	FAIR	NO	490952.531	141392.885
868	BIGTOOTH ASPEN	14	FAIR	NO	490948.619	141372.577
869	BIGTOOTH ASPEN	12	FAIR	NO	490944.347	141375.065
870	BIGTOOTH ASPEN	10	FAIR	NO	490941.194	141377.508
871	BIGTOOTH ASPEN	12	FAIR	NO	490941.793	141372.617
872	BIGTOOTH ASPEN	12	FAIR	NO	490938.020	141364.332
873	BIGTOOTH ASPEN	15	FAIR	NO	490926.927	141374.039
874	BIGTOOTH ASPEN	10	FAIR	NO	490930.153	141392.093
875	BIGTOOTH ASPEN	10	FAIR	NO	490925.158	141387.895
876	BUR OAK	8	FAIR	NO	490916.648	141409.903
877	BLACK CHERRY	14	FAIR	NO	490913.178	141420.644
878	BIGTOOTH ASPEN	10	FAIR	NO	490936.259	141415.467
879	BLACK WALNUT	8	FAIR	NO	490923.019	141435.588
880	BLACK CHERRY	14	FAIR	YES	490927.237	141449.533
881	ELM	4	FAIR	YES	490927.720	141450.800
882	RED OAK	22	FAIR	YES	490938.052	141452.954
883	BIGTOOTH ASPEN	10	FAIR	YES	490959.182	141465.202
884	BIGTOOTH ASPEN	8	FAIR	YES	490966.899	141445.026
885	BIGTOOTH ASPEN	8	FAIR	YES	490961.761	141469.564
886	SUGAR MAPLE	18	FAIR	YES	490961.248	141474.610
887	SUGAR MAPLE	18	FAIR	YES	490962.368	141481.855
888	BIGTOOTH ASPEN	6	FAIR	YES	490972.388	141443.027
889	BIGTOOTH ASPEN	8	FAIR	YES	490978.296	141442.637
890	BIGTOOTH ASPEN	6	FAIR	YES	490990.586	141436.785
891	BIGTOOTH ASPEN	10	FAIR	YES	490985.359	141441.147
892	BIGTOOTH ASPEN	5	FAIR	YES	490997.762	141438.377
893	BIGTOOTH ASPEN	10	FAIR	YES	491000.426	141441.284
894	BIGTOOTH ASPEN	0	FAIR	YES	490992.633	141455.335
895	BIGTOOTH ASPEN	6	FAIR	YES	490991.577	141459.916
896	BIGTOOTH ASPEN	7	FAIR	YES	490991.235	141451.276
897	BIGTOOTH ASPEN	12	FAIR	YES	491001.075	141457.298
898	BIGTOOTH ASPEN	8	FAIR	YES	491000.078	141467.332
899	BIGTOOTH ASPEN	15	FAIR	YES	490996.897	141487.793
900	BIGTOOTH ASPEN	16	FAIR	YES	490996.954	141483.870

Southwest Light Rail Project
Opus Area Tree Survey Table
City of Minnetonka

SRF Consulting Group
April 9, 2014

ID #	TREE SPECIES	DIAMETER AT BREST		WITHIN CONST. LIMITS*	LOCATION	
		HEIGHT (INCHES)	CONDITION		(NORTHING)	(EASTING)
901	BIGTOOTH ASPEN	15	FAIR	YES	490991.029	141489.475
902	BOXELDER	4	FAIR	YES	491012.323	141483.215
903	ELM	6	FAIR	YES	491021.447	141483.963
904	BIGTOOTH ASPEN	12	FAIR	YES	491024.151	141475.874
905	BIGTOOTH ASPEN	13	FAIR	YES	491035.920	141465.915
906	BOXELDER	10	FAIR	YES	491022.941	141454.295
907	BIGTOOTH ASPEN	8	FAIR	YES	491017.274	141439.308
908	BIGTOOTH ASPEN	12	FAIR	YES	491035.269	141439.710
909	BIGTOOTH ASPEN	6	FAIR	YES	491028.090	141425.627
910	BIGTOOTH ASPEN	10	FAIR	YES	491031.809	141423.269
911	BIGTOOTH ASPEN	14	FAIR	YES	491038.980	141415.052
912	BIGTOOTH ASPEN	4	FAIR	YES	491007.147	141474.127
913	BIGTOOTH ASPEN	4	FAIR	YES	491005.577	141458.241
914	BIGTOOTH ASPEN	4	FAIR	YES	491006.038	141464.252
915	BIGTOOTH ASPEN	5	FAIR	YES	491009.021	141470.335
916	BIGTOOTH ASPEN	6	FAIR	YES	490987.173	141459.941
917	ELM	8	FAIR	YES	490926.775	141468.923
918	BLACK CHERRY	12	FAIR	YES	490919.080	141483.856
919	SUGAR MAPLE	18	FAIR	YES	490940.515	141490.674
920	BLACK CHERRY	15	FAIR	YES	490957.945	141516.785
921	SUGAR MAPLE	20	FAIR	YES	490931.516	141518.074
922	SUGAR MAPLE	20	FAIR	YES	490944.480	141537.216
923	CRABAPPLE	10	FAIR	YES	490947.215	141523.156
924	ELM	14	FAIR	YES	490903.750	141518.989
925	BOXELDER	6	FAIR	YES	490911.339	141515.054
926	BLACK WALNUT	24	FAIR	YES	490910.224	141504.920
927	BLACK CHERRY	15	FAIR	YES	490923.906	141467.894
928	ELM	10	FAIR	YES	490928.950	141465.922
929	BLACK CHERRY	12	FAIR	NO	490902.972	141437.290
930	QUAKING ASPEN	14	FAIR	NO	490872.823	141442.347
931	ELM	10	FAIR	NO	490859.710	141434.274
932	RED OAK	10	FAIR	NO	490875.979	141421.207
933	QUAKING ASPEN	10	FAIR	NO	490864.714	141423.668
934	RED OAK	20	FAIR	NO	490852.724	141415.031
935	RED OAK	22	FAIR	NO	490845.483	141432.276
936	GREEN ASH	12	FAIR	NO	490847.117	141443.915
937	BASSWOOD	12	FAIR	NO	490849.374	141456.114
938	RED OAK	16	FAIR	NO	490845.715	141444.034
939	BIGTOOTH ASPEN	10	FAIR	NO	490880.822	141439.561
940	QUAKING ASPEN	10	FAIR	NO	490862.675	141458.109
941	QUAKING ASPEN	8	FAIR	NO	490873.794	141459.984
942	QUAKING ASPEN	7	FAIR	NO	490878.733	141459.899
943	QUAKING ASPEN	12	FAIR	NO	490870.889	141456.958

Southwest Light Rail Project
Opus Area Tree Survey Table
City of Minnetonka

SRF Consulting Group
April 9, 2014

ID #	TREE SPECIES	DIAMETER AT BREAST		WITHIN CONST. LIMITS*	LOCATION	
		HEIGHT (INCHES)	CONDITION		(NORTHING)	(EASTING)
944	QUAKING ASPEN	10	FAIR	NO	490882.934	141461.177
945	QUAKING ASPEN	9	FAIR	NO	490892.833	141455.683
946	QUAKING ASPEN	7	FAIR	NO	490898.569	141457.560
947	SUGAR MAPLE	10	FAIR	YES	490914.549	141462.344
948	RED OAK	16	FAIR	NO	490842.820	141458.349
949	BOXELDER	12	FAIR	NO	490800.080	141475.146
950	BLACK WALNUT	12	FAIR	NO	490784.371	141468.832
951	BLACK WALNUT	6	FAIR	NO	490791.816	141485.632
952	ELM	24	DEAD	NO	490799.361	141498.913
953	RED OAK	10	FAIR	NO	490795.905	141498.876
954	ELM	10	DEAD	NO	490822.811	141477.918
955	BLACK CHERRY	13	FAIR	NO	490852.664	141472.685
956	BLACK CHERRY	8	FAIR	NO	490867.166	141470.147
957	BLACK CHERRY	14	FAIR	NO	490880.032	141476.020
958	SUGAR MAPLE	10	FAIR	NO	490898.525	141471.116
959	QUAKING ASPEN	8	FAIR	NO	490902.514	141454.263
960	BLACK CHERRY	10	FAIR	YES	490900.242	141476.115
961	ELM	15	FAIR	YES	490884.895	141495.643
962	BLACK CHERRY	4	FAIR	NO	490869.867	141492.833
963	BLACK CHERRY	10	FAIR	YES	490888.063	141488.851
964	SUGAR MAPLE	8	FAIR	YES	490875.009	141497.946
965	BLACK LOCUST	8	FAIR	YES	490884.108	141527.108
966	BLACK CHERRY	18	FAIR	YES	490894.480	141517.630
967	BLACK CHERRY	20	FAIR	YES	490914.877	141494.567
968	BOXELDER	6	FAIR	YES	490873.452	141542.706
969	BLACK LOCUST	24	FAIR	YES	490865.835	141551.606
970	BOXELDER	8	FAIR	YES	490886.495	141553.785
971	BOXELDER	24	FAIR	YES	490902.246	141555.792
972	BLACK LOCUST	12	FAIR	YES	490909.890	141563.959
973	BOXELDER	12	FAIR	YES	490922.866	141549.795
974	BLACK LOCUST	8	FAIR	YES	490921.278	141557.159
975	BLACK LOCUST	18	FAIR	YES	490882.641	141572.827
976	BOXELDER	20	FAIR	YES	490890.134	141586.047
977	BLACK WALNUT	6	FAIR	YES	490876.794	141591.777
978	BLACK WALNUT	6	FAIR	YES	490868.672	141593.519
979	BLACK LOCUST	12	FAIR	YES	490868.079	141582.902
980	COTTONWOOD	36	FAIR	YES	490869.045	141591.673
981	BLACK LOCUST	15	FAIR	YES	490881.540	141588.117
982	BLACK LOCUST	8	FAIR	YES	490875.411	141589.615
983	BLACK LOCUST	8	FAIR	YES	490856.591	141565.395
984	BLACK LOCUST	6	FAIR	YES	490862.304	141560.022
985	BLACK LOCUST	24	FAIR	YES	490861.642	141552.240
986	BOXELDER	4	FAIR	YES	490859.929	141550.834

Southwest Light Rail Project
Opus Area Tree Survey Table
City of Minnetonka

SRF Consulting Group
April 9, 2014

ID #	TREE SPECIES	DIAMETER AT BREST		WITHIN CONST. LIMITS*	LOCATION	
		HEIGHT (INCHES)	CONDITION		(NORTHING)	(EASTING)
987	BOXELDER	8	FAIR	YES	490876.558	141534.325
988	BLACK WALNUT	12	FAIR	YES	490856.627	141531.163
989	BLACK LOCUST	8	FAIR	YES	490845.447	141543.689
990	BLACK CHERRY	10	FAIR	NO	490839.309	141501.809
991	SUGAR MAPLE	8	FAIR	NO	490830.258	141520.343
992	BLACK CHERRY	10	FAIR	NO	490826.272	141522.455
993	BLACK CHERRY	12	FAIR	NO	490826.661	141518.487
994	BLACK CHERRY	14	FAIR	NO	490819.621	141516.398
995	BOXELDER	10	FAIR	NO	490816.627	141516.674
996	CRABAPPLE	18	FAIR	NO	490745.591	141480.544
997	BLACK WALNUT	15	FAIR	NO	490733.409	141486.087
998	BLUE SPRUCE	12	FAIR	NO	490716.086	141505.484
999	BLUE SPRUCE	12	FAIR	NO	490706.890	141493.140
1000	WHITE SPRUCE	12	FAIR	YES	490727.168	141534.803
1001	WHITE SPRUCE	12	FAIR	YES	490711.947	141553.799
1002	LITTLEAF LINDEN	14	FAIR	NO	490707.432	141560.660
1003	BLUE SPRUCE	12	FAIR	NO	490699.187	141570.083
1004	BLUE SPRUCE	12	FAIR	NO	490687.591	141564.875
1005	BOXELDER	10	FAIR	NO	490683.992	141584.198
1006	BIGTOOTH ASPEN	15	FAIR	NO	490669.523	141593.161
1007	BOXELDER	8	FAIR	YES	490759.225	141512.556
1008	BOXELDER	12	FAIR	YES	490756.634	141518.472
1009	BOXELDER	16	FAIR	YES	490757.283	141509.927
1010	BOXELDER	18	FAIR	YES	490760.862	141514.151
1011	BOXELDER	10	FAIR	YES	490748.446	141559.623
1012	BIGTOOTH ASPEN	12	FAIR	YES	490745.243	141537.167
1013	BIGTOOTH ASPEN	20	FAIR	YES	490757.986	141560.967
1014	RED OAK	15	FAIR	YES	490771.380	141526.298
1015	BLACK CHERRY	18	FAIR	NO	490812.806	141513.890
1016	BLACK CHERRY	10	FAIR	NO	490822.877	141518.066
1017	BOXELDER	10	FAIR	YES	490799.634	141536.373
1018	BLACK CHERRY	12	FAIR	YES	490791.190	141540.468
1019	BOXELDER	8	FAIR	YES	490741.891	141588.695
1020	BOXELDER	8	FAIR	YES	490792.837	141564.747
1021	BLACK LOCUST	16	FAIR	YES	490798.088	141565.219
1022	BLACK LOCUST	8	FAIR	YES	490802.480	141572.429
1023	BLACK LOCUST	16	FAIR	YES	490804.215	141564.249
1024	BLACK LOCUST	12	FAIR	YES	490817.911	141573.409
1025	BOXELDER	8	FAIR	YES	490827.158	141559.370
1026	BLACK LOCUST	6	FAIR	YES	490834.674	141551.422
1027	BOXELDER	8	FAIR	YES	490844.294	141547.850
1028	BLACK LOCUST	16	FAIR	YES	490846.479	141565.944
1029	BLACK LOCUST	15	FAIR	YES	490844.200	141575.444

Southwest Light Rail Project
Opus Area Tree Survey Table
City of Minnetonka

SRF Consulting Group
April 9, 2014

ID #	TREE SPECIES	DIAMETER AT BREST		WITHIN CONST. LIMITS*	LOCATION	
		HEIGHT (INCHES)	CONDITION		(NORTHING)	(EASTING)
1030	BLACK LOCUST	16	FAIR	YES	490845.510	141553.412
1031	BOXELDER	6	FAIR	YES	490837.855	141591.641
1032	BLACK LOCUST	8	FAIR	YES	490851.310	141594.244
1033	BLACK LOCUST	18	FAIR	YES	490856.017	141632.023
1034	BLACK LOCUST	10	FAIR	YES	490848.372	141607.656
1035	BLACK LOCUST	14	FAIR	YES	490856.522	141611.270
1036	BLACK LOCUST	18	FAIR	YES	490856.041	141587.239
1037	BLACK LOCUST	8	FAIR	YES	490860.429	141631.652
1038	BOXELDER	8	FAIR	YES	490865.998	141629.290
1039	BLACK LOCUST	8	FAIR	YES	490862.138	141630.838
1040	BOXELDER	12	FAIR	NO	490857.666	141641.202
1041	BOXELDER	8	FAIR	NO	490855.893	141644.929
1042	BOXELDER	8	FAIR	YES	490850.500	141629.665
1043	BOXELDER	10	FAIR	YES	490842.453	141610.942
1045	BOXELDER	8	FAIR	YES	490822.297	141595.471
1046	BOXELDER	18	FAIR	YES	490764.888	141611.594
1047	BOXELDER	10	FAIR	YES	490765.644	141622.651
1048	BLACK LOCUST	15	FAIR	YES	490762.123	141639.365
1049	BLACK LOCUST	12	FAIR	YES	490750.102	141646.622
1050	BLACK LOCUST	10	FAIR	YES	490762.081	141646.266
1051	BLACK LOCUST	8	FAIR	YES	490769.513	141620.739
1052	BLACK LOCUST	6	FAIR	YES	490773.982	141657.968
1053	BOXELDER	10	FAIR	YES	490773.535	141630.444
1054	BLACK LOCUST	24	FAIR	YES	490777.729	141656.974
1055	BOXELDER	6	FAIR	YES	490786.183	141644.505
1056	BLACK LOCUST	4	FAIR	YES	490797.920	141632.710
1057	BOXELDER	7	FAIR	YES	490800.733	141634.409
1058	BLACK LOCUST	4	FAIR	YES	490796.685	141633.771
1059	BLACK LOCUST	16	FAIR	YES	490809.854	141612.639
1060	BOXELDER	5	FAIR	YES	490808.320	141637.483
1061	BLACK LOCUST	20	FAIR	YES	490804.821	141627.159
1062	BLACK LOCUST	22	FAIR	YES	490806.780	141628.359
1063	BLACK LOCUST	6	FAIR	YES	490815.444	141623.984
1064	BLACK LOCUST	14	FAIR	YES	490824.354	141636.289
1065	BLACK LOCUST	12	FAIR	YES	490806.899	141657.010
1066	BLACK LOCUST	15	FAIR	YES	490810.287	141632.970
1067	BOXELDER	6	FAIR	YES	490821.697	141638.021
1068	BLACK LOCUST	15	FAIR	YES	490810.348	141648.080
1069	BLACK LOCUST	16	FAIR	YES	490816.676	141654.239
1070	BOXELDER	7	FAIR	YES	490822.422	141651.620
1071	BLACK LOCUST	6	FAIR	YES	490821.072	141651.808
1072	BLACK LOCUST	13	FAIR	YES	490823.749	141654.727
1073	BLACK LOCUST	10	FAIR	YES	490819.210	141642.349

Southwest Light Rail Project
Opus Area Tree Survey Table
City of Minnetonka

SRF Consulting Group
April 9, 2014

ID #	TREE SPECIES	DIAMETER AT BREAST		WITHIN CONST. LIMITS*	LOCATION	
		HEIGHT (INCHES)	CONDITION		(NORTHING)	(EASTING)
1074	BOXELDER	15	FAIR	YES	490825.677	141635.366
1075	BLACK LOCUST	16	FAIR	YES	490846.954	141620.382
1076	BLACK LOCUST	8	FAIR	YES	490841.346	141642.150
1077	BLACK LOCUST	8	FAIR	YES	490840.741	141642.291
1078	BLACK LOCUST	6	FAIR	YES	490847.546	141638.926
1079	BOXELDER	8	FAIR	YES	490855.359	141641.217
1080	BOXELDER	12	FAIR	YES	490850.385	141634.206
1081	BLACK LOCUST	6	FAIR	YES	490851.778	141624.678
1082	BLACK LOCUST	10	FAIR	YES	490860.353	141619.150
1083	BLACK LOCUST	4	FAIR	YES	490840.927	141641.693
1084	BOXELDER	8	FAIR	YES	490868.838	141614.905
1085	BOXELDER	15	FAIR	YES	490909.432	141574.173
1086	BLACK LOCUST	12	FAIR	YES	490898.145	141576.723
1087	CRABAPPLE	10	FAIR	YES	490953.383	141534.394
1088	BIGTOOTH ASPEN	20	FAIR	NO	490997.216	141510.679
1089	BIGTOOTH ASPEN	12	FAIR	NO	491027.848	141491.756
1090	CHOKE CHERRY	8	FAIR	NO	491047.427	141472.964
1091	CHOKE CHERRY	6	FAIR	YES	491047.691	141467.428
1092	GREEN ASH	10	FAIR	YES	491054.753	141464.518
1093	BIGTOOTH ASPEN	12	FAIR	YES	491091.959	141434.963
1094	BIGTOOTH ASPEN	14	FAIR	YES	491097.063	141428.699
1095	GREEN ASH	8	FAIR	NO	491159.021	141401.849
1096	BOXELDER	15	FAIR	NO	491259.459	141304.801
1097	RED PINE	10	FAIR	NO	491261.462	141293.741
1098	BLACK LOCUST	6	FAIR	NO	490827.381	141703.192
1099	BLACK LOCUST	8	FAIR	NO	490821.524	141703.515
1100	BLACK LOCUST	10	FAIR	NO	490826.566	141712.210
1101	BLACK LOCUST	12	FAIR	NO	490817.337	141710.825
1102	BLACK LOCUST	14	FAIR	NO	490820.149	141701.688
1103	BLACK LOCUST	14	FAIR	NO	490814.426	141702.437
1104	GREEN ASH	16	FAIR	NO	490822.392	141699.753
1105	BLACK LOCUST	4	FAIR	NO	490830.259	141694.152
1106	BLACK LOCUST	4	FAIR	NO	490833.308	141691.180
1107	BLACK LOCUST	55	FAIR	NO	490834.105	141687.383
1108	BLACK LOCUST	15	FAIR	NO	490831.599	141675.118
1109	BLACK LOCUST	12	FAIR	NO	490835.219	141672.069
1110	BLACK LOCUST	6	FAIR	NO	490845.118	141674.147
1111	BLACK LOCUST	6	FAIR	YES	490838.820	141660.494
1112	BLACK LOCUST	10	FAIR	YES	490837.683	141661.624
1113	BLACK LOCUST	5	FAIR	YES	490823.035	141656.115
1114	WHITE SPRUCE	12	FAIR	YES	490787.594	141691.444
1115	BLUE SPRUCE	14	FAIR	NO	490792.172	141711.972
1116	BLUE SPRUCE	12	FAIR	NO	490782.612	141722.524

Southwest Light Rail Project
Opus Area Tree Survey Table
City of Minnetonka

SRF Consulting Group
April 9, 2014

ID #	TREE SPECIES	DIAMETER AT BREAST		WITHIN CONST. LIMITS*	LOCATION	
		HEIGHT (INCHES)	CONDITION		(NORTHING)	(EASTING)
1117	WHITE SPRUCE	12	FAIR	NO	490779.527	141739.815
1118	BLUE SPRUCE	0	FAIR	NO	490770.825	141752.020
1119	BLACK LOCUST	6	FAIR	YES	490661.482	141714.783
1120	BLACK LOCUST	12	FAIR	YES	490663.281	141691.209
1121	BLACK LOCUST	15	FAIR	YES	490666.065	141683.777
1122	BLACK LOCUST	13	FAIR	YES	490671.031	141666.805
1123	BLACK LOCUST	12	FAIR	NO	490654.365	141641.552
1124	BLACK LOCUST	10	FAIR	NO	490659.714	141637.290
1125	BLACK LOCUST	8	FAIR	NO	490657.020	141637.368
1126	BLACK LOCUST	10	FAIR	NO	490647.686	141637.398
1127	BLACK LOCUST	5	FAIR	NO	490636.884	141639.114
1128	BLACK LOCUST	14	FAIR	NO	490589.417	141655.196
1129	BLACK LOCUST	8	FAIR	YES	490590.685	141663.559
1130	BLACK LOCUST	10	FAIR	YES	490590.896	141665.535
1131	BLACK LOCUST	10	FAIR	YES	490592.782	141671.199
1132	BLACK LOCUST	8	FAIR	YES	490599.195	141671.480
1133	BLACK LOCUST	12	FAIR	YES	490613.904	141667.351
1134	BLACK LOCUST	8	FAIR	YES	490612.865	141681.648
1135	BLACK LOCUST	10	FAIR	YES	490604.589	141678.147
1136	BLACK LOCUST	8	FAIR	YES	490609.461	141686.480
1137	BLACK LOCUST	8	FAIR	YES	490629.681	141683.213
1138	BLACK LOCUST	16	FAIR	YES	490621.844	141688.541
1139	BLACK LOCUST	10	FAIR	YES	490609.076	141704.197
1140	BOXELDER	8	FAIR	NO	490725.109	141575.703
1141	BOXELDER	6	FAIR	NO	490720.142	141583.348
1142	ELM	4	FAIR	NO	490717.579	141581.849
1143	BOXELDER	5	FAIR	YES	490730.301	141611.545
1144	BOXELDER	14	FAIR	YES	490728.392	141609.315
1145	BOXELDER	9	FAIR	NO	490721.046	141609.679
1146	BOXELDER	8	FAIR	NO	490700.625	141606.021
1147	BOXELDER	8	FAIR	NO	490713.998	141617.248
1148	BOXELDER	10	FAIR	YES	490709.536	141635.436
1149	BOXELDER	6	FAIR	NO	490701.753	141631.139
1150	BLACK LOCUST	12	FAIR	YES	490728.671	141643.565
1151	BLACK LOCUST	6	FAIR	YES	490730.747	141652.685
1152	BLACK LOCUST	6	FAIR	YES	490724.111	141664.382
1153	COTTONWOOD	16	FAIR	YES	492092.150	139939.770
1154	COTTONWOOD	15	FAIR	YES	492089.753	139950.809
1155	BOXELDER	17	FAIR	YES	492093.800	139963.218
1156	COTTONWOOD	20	FAIR	YES	492081.662	139963.321
1157	BOXELDER	13	FAIR	NO	492123.570	139933.548
1158	COTTONWOOD	18	FAIR	YES	492077.569	139968.789
1159	BOXELDER	13	FAIR	YES	492063.721	139978.280

ID #	TREE SPECIES	DIAMETER AT BREAST		WITHIN CONST. LIMITS*	LOCATION	
		HEIGHT (INCHES)	CONDITION		(NORTHING)	(EASTING)
1160	COTTONWOOD	12	FAIR	YES	492064.629	139954.889
1161	COTTONWOOD	24	FAIR	YES	492063.754	139947.845
1162	COTTONWOOD	14	FAIR	YES	492032.194	139954.511
1163	BOXELDER	10	FAIR	YES	492038.464	139949.916
1164	BOXELDER	12	FAIR	YES	492024.693	139953.845
1165	COTTONWOOD	8	FAIR	YES	492015.883	139953.444
1166	COTTONWOOD	18	FAIR	YES	492017.907	139957.808
1167	COTTONWOOD	14	FAIR	YES	492008.257	139959.758
1168	COTTONWOOD	14	FAIR	YES	491986.996	139967.376
1169	COTTONWOOD	15	FAIR	YES	492003.125	139971.027
1170	COTTONWOOD	20	FAIR	YES	492011.129	139995.115
1171	COTTONWOOD	20	FAIR	YES	491978.856	139994.885
1172	BOXELDER	10	FAIR	YES	492016.186	139984.369
1173	BOXELDER	12	FAIR	YES	492009.770	140001.810
1174	BOXELDER	12	FAIR	YES	492004.743	140008.934
1175	BOXELDER	13	FAIR	YES	492014.721	140009.181
1176	BOXELDER	13	FAIR	YES	492016.582	139984.240
1177	BOXELDER	14	FAIR	YES	492032.103	139977.867
1178	BOXELDER	9	FAIR	YES	492038.514	139982.658
1179	BOXELDER	10	FAIR	YES	492034.320	139993.110
1180	BOXELDER	9	FAIR	YES	492035.685	140011.699
1181	COTTONWOOD	30	FAIR	YES	492021.767	140028.820
1182	BOXELDER	12	FAIR	YES	492042.173	140013.746
1183	BOXELDER	26	FAIR	YES	492049.314	140015.896
1184	BOXELDER	12	FAIR	YES	492043.148	140021.377
1185	BOXELDER	30	FAIR	YES	492085.044	140020.678
1186	BOXELDER	10	FAIR	YES	492038.585	140048.118
1187	BOXELDER	16	FAIR	YES	492021.372	140054.875
1188	BOXELDER	24	FAIR	NO	491993.069	140040.825
1189	BOXELDER	12	FAIR	NO	491995.779	140072.127
1190	BOXELDER	16	FAIR	YES	492020.170	140089.532
1191	ELM	24	DEAD	YES	492044.337	140079.498
1192	BOXELDER	15	FAIR	YES	492032.371	140089.536
1193	BOXELDER	30	FAIR	YES	492053.844	140078.457
1194	BLACK CHERRY	12	FAIR	YES	492000.619	140130.549
1195	BOXELDER	14	FAIR	YES	491996.475	140127.588
1196	BOXELDER	10	FAIR	NO	491992.491	140132.286
1197	COTTONWOOD	16	FAIR	NO	491981.510	140142.698
1198	BOXELDER	8	FAIR	NO	491980.229	140160.960
1199	BOXELDER	12	FAIR	NO	491979.071	140190.157
1200	COTTONWOOD	13	FAIR	NO	491943.912	140243.938
1201	COTTONWOOD	14	FAIR	NO	491948.440	140250.548
1202	RED PINE	16	FAIR	NO	491930.744	140255.061

Southwest Light Rail Project
Opus Area Tree Survey Table
City of Minnetonka

SRF Consulting Group
April 9, 2014

ID #	TREE SPECIES	DIAMETER AT BREAST		WITHIN CONST. LIMITS*	LOCATION	
		HEIGHT (INCHES)	CONDITION		(NORTHING)	(EASTING)
1203	RED PINE	12	FAIR	NO	491930.242	140276.227
1204	RED PINE	12	FAIR	NO	491927.655	140277.978
1205	ELM	14	FAIR	NO	491923.856	140279.785
1206	WHITE SPRUCE	15	FAIR	YES	491928.322	140341.941
1207	WHITE SPRUCE	11	FAIR	YES	491929.046	140368.821
1208	COTTONWOOD	24	FAIR	YES	491935.793	140377.980
1209	COTTONWOOD	12	FAIR	YES	491928.236	140387.683
1210	COTTONWOOD	20	FAIR	YES	491937.381	140389.776
1211	PIN OAK	12	FAIR	NO	491878.546	140348.785
1212	GREEN ASH	14	FAIR	NO	491862.510	140268.976
1213	BLACK CHERRY	15	FAIR	NO	491884.681	140253.822
1214	BLACK CHERRY	14	FAIR	NO	491863.687	140237.066
1215	BLACK CHERRY	10	FAIR	NO	491869.307	140214.552
1216	BOXELDER	8	FAIR	NO	492263.110	140789.440
1217	BOXELDER	9	FAIR	NO	492278.685	140792.579
1218	ELM	16	FAIR	NO	492285.010	140791.486
1219	ELM	12	FAIR	NO	492285.693	140794.065
1220	ELM	14	FAIR	NO	492281.102	140803.479
1221	COTTONWOOD	18	FAIR	NO	492307.290	140808.781
1222	COTTONWOOD	20	FAIR	NO	492306.971	140787.999
1223	COTTONWOOD	24	FAIR	NO	492316.790	140788.671
1224	COTTONWOOD	12	FAIR	NO	492307.692	140771.341
1225	COTTONWOOD	10	FAIR	NO	492301.429	140771.970
1226	COTTONWOOD	14	FAIR	NO	492297.641	140763.097
1227	COTTONWOOD	18	FAIR	NO	492300.952	140750.187
1228	COTTONWOOD	14	FAIR	NO	492311.251	140744.044
1229	COTTONWOOD	30	FAIR	NO	492315.323	140732.756
1230	WILLOW	14	FAIR	NO	492311.818	140723.540
1231	WILLOW	12	FAIR	NO	492325.375	140706.171
1232	COTTONWOOD	20	FAIR	NO	492286.992	140702.675
1233	COTTONWOOD	12	FAIR	NO	492284.887	140699.759
1234	WILLOW	10	FAIR	NO	492272.536	140707.997
1235	BOXELDER	12	FAIR	NO	492250.591	140707.642
1236	BOXELDER	12	FAIR	NO	492244.224	140716.428
1237	COTTONWOOD	22	FAIR	NO	492225.141	140747.637
1238	BOXELDER	14	FAIR	NO	492225.642	140755.832
1239	COTTONWOOD	22	FAIR	NO	492240.348	140743.933
1240	COTTONWOOD	28	FAIR	NO	492255.617	140671.535
1241	COTTONWOOD	20	FAIR	NO	492236.677	140685.952
1242	COTTONWOOD	14	FAIR	NO	492238.014	140678.201
1243	BOXELDER	10	FAIR	NO	492233.927	140682.721
1244	BOXELDER	10	FAIR	NO	492228.076	140661.950
1245	COTTONWOOD	14	FAIR	NO	492216.488	140640.271

Southwest Light Rail Project
Opus Area Tree Survey Table
 City of Minnetonka

SRF Consulting Group
 April 9, 2014

ID #	TREE SPECIES	DIAMETER AT BREAST		WITHIN CONST. LIMITS*	LOCATION	
		HEIGHT (INCHES)	CONDITION		(NORTHING)	(EASTING)
1246	WILLOW	12	FAIR	NO	492214.997	140666.273
1247	COTTONWOOD	16	FAIR	NO	492205.366	140674.430
1248	WILLOW	9	FAIR	NO	492208.029	140650.370
1249	BOXELDER	13	FAIR	NO	492193.959	140697.865
1250	BOXELDER	10	FAIR	NO	492177.016	140706.110
1251	BOXELDER	16	FAIR	NO	492168.384	140703.036
1252	COTTONWOOD	6	FAIR	NO	492172.693	140666.289
1253	BOXELDER	15	FAIR	NO	492177.749	140643.931
1254	WILLOW	10	FAIR	NO	492188.597	140644.450
1255	COTTONWOOD	14	FAIR	NO	492189.077	140637.897
1256	COTTONWOOD	18	FAIR	NO	492181.510	140628.341
1257	BOXELDER	12	FAIR	NO	492192.582	140607.561
1258	COTTONWOOD	18	FAIR	NO	492189.363	140602.201
1259	WILLOW	8	FAIR	NO	492186.506	140600.676
1260	COTTONWOOD	12	FAIR	NO	492182.724	140609.825
1261	COTTONWOOD	20	FAIR	NO	492189.058	140592.252
1262	COTTONWOOD	10	FAIR	NO	492167.643	140603.808
1263	COTTONWOOD	18	FAIR	NO	492161.847	140599.256
1264	COTTONWOOD	24	FAIR	NO	492155.628	140621.344
1265	BOXELDER	8	FAIR	NO	492145.558	140626.820
1266	BOXELDER	18	FAIR	NO	492131.246	140677.540
1267	BOXELDER	30	FAIR	NO	492136.872	140704.945
1268	COTTONWOOD	22	FAIR	NO	492185.224	140736.812
1269	BOXELDER	12	FAIR	NO	492178.778	140729.697
1270	BOXELDER	30	FAIR	NO	492063.113	140655.593
1271	BOXELDER	24	FAIR	NO	492052.838	140645.780
1272	BOXELDER	28	FAIR	NO	492042.246	140656.727
1273	BOXELDER	28	FAIR	NO	492062.115	140622.221
1274	BOXELDER	20	FAIR	NO	492063.252	140626.713
1275	COTTONWOOD	30	FAIR	NO	492099.286	140588.179
1276	BOXELDER	14	FAIR	NO	492051.922	140587.199
1277	BOXELDER	24	FAIR	NO	492052.568	140584.324
1278	BOXELDER	38	FAIR	NO	492036.326	140582.594
1279	BUR OAK	28	FAIR	NO	492027.803	140618.550
1280	BOXELDER	8	FAIR	NO	492012.087	140624.279
1281	BOXELDER	18	FAIR	NO	492010.363	140600.247
1282	BOXELDER	14	FAIR	NO	491991.102	140605.641
1283	BOXELDER	12	FAIR	NO	491976.424	140608.118
1284	BOXELDER	12	FAIR	NO	491978.269	140601.966
1285	ELM	20	FAIR	NO	491963.205	140595.597
1286	GREEN ASH	12	FAIR	NO	491963.114	140592.674
1287	GREEN ASH	15	FAIR	NO	491949.069	140607.221
1288	BOXELDER	18	FAIR	NO	491964.900	140617.473

ID #	TREE SPECIES	DIAMETER AT BREAST		WITHIN CONST. LIMITS*	LOCATION	
		HEIGHT (INCHES)	CONDITION		(NORTHING)	(EASTING)
1289	BOXELDER	12	FAIR	NO	491976.015	140611.359
1290	BOXELDER	12	FAIR	NO	491977.007	140604.301
1291	GREEN ASH	15	FAIR	NO	491959.560	140623.046
1292	GREEN ASH	20	FAIR	NO	491956.848	140655.753
1293	BOXELDER	8	FAIR	NO	491953.762	140665.519
1294	BOXELDER	8	FAIR	NO	491959.897	140664.920
1295	BOXELDER	12	FAIR	NO	491955.104	140687.219
1296	BLACK CHERRY	12	FAIR	NO	491944.392	140565.483
1297	BOXELDER	28	FAIR	NO	492015.476	140565.268
1298	WILLOW	24	FAIR	NO	492031.255	140529.975
1299	GREEN ASH	20	FAIR	NO	492029.101	140526.532
1300	BOXELDER	18	FAIR	NO	492038.932	140516.046
1301	BOXELDER	16	FAIR	NO	492014.475	140501.115
1302	BOXELDER	24	FAIR	NO	491995.936	140491.066
1303	GREEN ASH	12	FAIR	NO	491998.922	140486.309
1304	BOXELDER	20	FAIR	NO	491991.985	140498.381
1305	BOXELDER	12	FAIR	NO	492011.952	140455.401
1306	BOXELDER	12	FAIR	YES	491985.549	140445.825
1307	BUR OAK	13	FAIR	YES	491973.991	140438.699
1308	GREEN ASH	20	FAIR	YES	491989.512	140430.244
1309	RED OAK	4	FAIR	YES	491989.844	140427.306
1310	ELM	12	FAIR	YES	491992.061	140412.350
1311	BOXELDER	12	FAIR	YES	492009.931	140411.092
1312	BUR OAK	9	FAIR	YES	492015.318	140411.336
1313	BOXELDER	14	FAIR	NO	492027.118	140426.065
1314	BOXELDER	18	FAIR	NO	492048.386	140495.911
1315	COTTONWOOD	24	FAIR	NO	492041.139	140394.695
1316	BUR OAK	8	FAIR	YES	492026.621	140389.487
1317	BOXELDER	26	FAIR	NO	492064.555	140383.274
1318	BOXELDER	12	FAIR	NO	492071.785	140387.775
1319	BOXELDER	12	FAIR	NO	492056.280	140356.071
1320	BOXELDER	18	FAIR	NO	492064.729	140368.748
1321	BOXELDER	10	FAIR	NO	492064.520	140356.439
1322	BOXELDER	12	FAIR	NO	492059.565	140351.189
1323	BOXELDER	12	FAIR	NO	492068.370	140349.585
1324	BOXELDER	14	FAIR	NO	492064.912	140333.635
1325	BOXELDER	8	FAIR	NO	492061.822	140331.002
1326	BOXELDER	10	FAIR	NO	492063.411	140321.904
1327	BOXELDER	10	FAIR	NO	492062.694	140319.035
1328	BOXELDER	10	FAIR	NO	492069.123	140309.842
1329	BOXELDER	15	FAIR	NO	492060.192	140307.143
1330	BOXELDER	10	FAIR	NO	492070.407	140295.913
1331	WILLOW	12	FAIR	NO	492094.505	140321.068

Southwest Light Rail Project
Opus Area Tree Survey Table
City of Minnetonka

SRF Consulting Group
April 9, 2014

ID #	TREE SPECIES	DIAMETER AT BREAST		WITHIN CONST. LIMITS*	LOCATION	
		HEIGHT (INCHES)	CONDITION		(NORTHING)	(EASTING)
1332	BOXELDER	12	FAIR	YES	492054.473	140268.318
1333	COTTONWOOD	14	FAIR	YES	492044.151	140254.172
1334	PAPER BIRCH	10	FAIR	YES	492030.176	140256.996
1335	RED OAK	12	FAIR	YES	492028.138	140250.511
1336	COTTONWOOD	28	FAIR	YES	492050.004	140235.317
1337	BOXELDER	16	FAIR	YES	492064.985	140223.236
1338	BOXELDER	18	FAIR	YES	492019.594	140276.925
1339	GREEN ASH	16	FAIR	YES	492009.774	140274.307
1340	BLACK CHERRY	16	FAIR	YES	491997.654	140269.833
1341	BOXELDER	8	FAIR	YES	491990.152	140291.263
1342	BOXELDER	24	FAIR	YES	491997.852	140289.092
1343	BOXELDER	8	FAIR	YES	491972.705	140273.392
1344	COTTONWOOD	30	FAIR	YES	491981.651	140267.228
1345	ELM	8	FAIR	YES	491970.198	140268.665
1346	ELM	16	FAIR	YES	491973.597	140267.190
1347	BOXELDER	15	FAIR	YES	491950.763	140318.897
1348	BOXELDER	22	FAIR	YES	491955.408	140332.559
1349	BOXELDER	14	FAIR	YES	491952.784	140350.899
1350	BOXELDER	12	FAIR	YES	491955.047	140358.486
1351	BOXELDER	14	FAIR	YES	491952.628	140384.336
1352	BOXELDER	13	FAIR	YES	491960.427	140402.973
1353	BOXELDER	16	FAIR	YES	491962.743	140428.495
1354	COTTONWOOD	18	FAIR	NO	491952.661	140523.605
1355	COTTONWOOD	18	FAIR	NO	491951.749	140541.015
1356	COTTONWOOD	20	FAIR	NO	491953.810	140543.992
1357	COTTONWOOD	12	FAIR	NO	491948.120	140541.628
1358	COTTONWOOD	20	FAIR	NO	491952.046	140550.873
1359	BLACK CHERRY	12	FAIR	NO	491958.779	140553.824
1360	BOXELDER	16	FAIR	NO	492086.205	140184.961
1361	BOXELDER	10	FAIR	NO	492091.706	140185.350
1362	BOXELDER	18	FAIR	NO	492093.077	140201.267
1363	BOXELDER	18	FAIR	NO	492096.221	140193.540
1364	BOXELDER	16	FAIR	NO	492093.936	140162.026
1365	WILLOW	20	FAIR	NO	492140.077	140182.295
1366	COTTONWOOD	30	FAIR	NO	492147.915	140171.213
1367	BOXELDER	20	FAIR	NO	492105.326	140142.189
1368	COTTONWOOD	24	FAIR	YES	492069.805	140142.507
1369	COTTONWOOD	16	FAIR	YES	492068.499	140140.612
1370	COTTONWOOD	20	FAIR	YES	492068.909	140145.100
1371	COTTONWOOD	15	FAIR	YES	492068.734	140127.396
1372	COTTONWOOD	24	FAIR	YES	492071.583	140122.086
1373	COTTONWOOD	8	FAIR	NO	492083.655	140117.787
1374	COTTONWOOD	30	FAIR	YES	492079.627	140103.403

Southwest Light Rail Project
Opus Area Tree Survey Table
City of Minnetonka

SRF Consulting Group
April 9, 2014

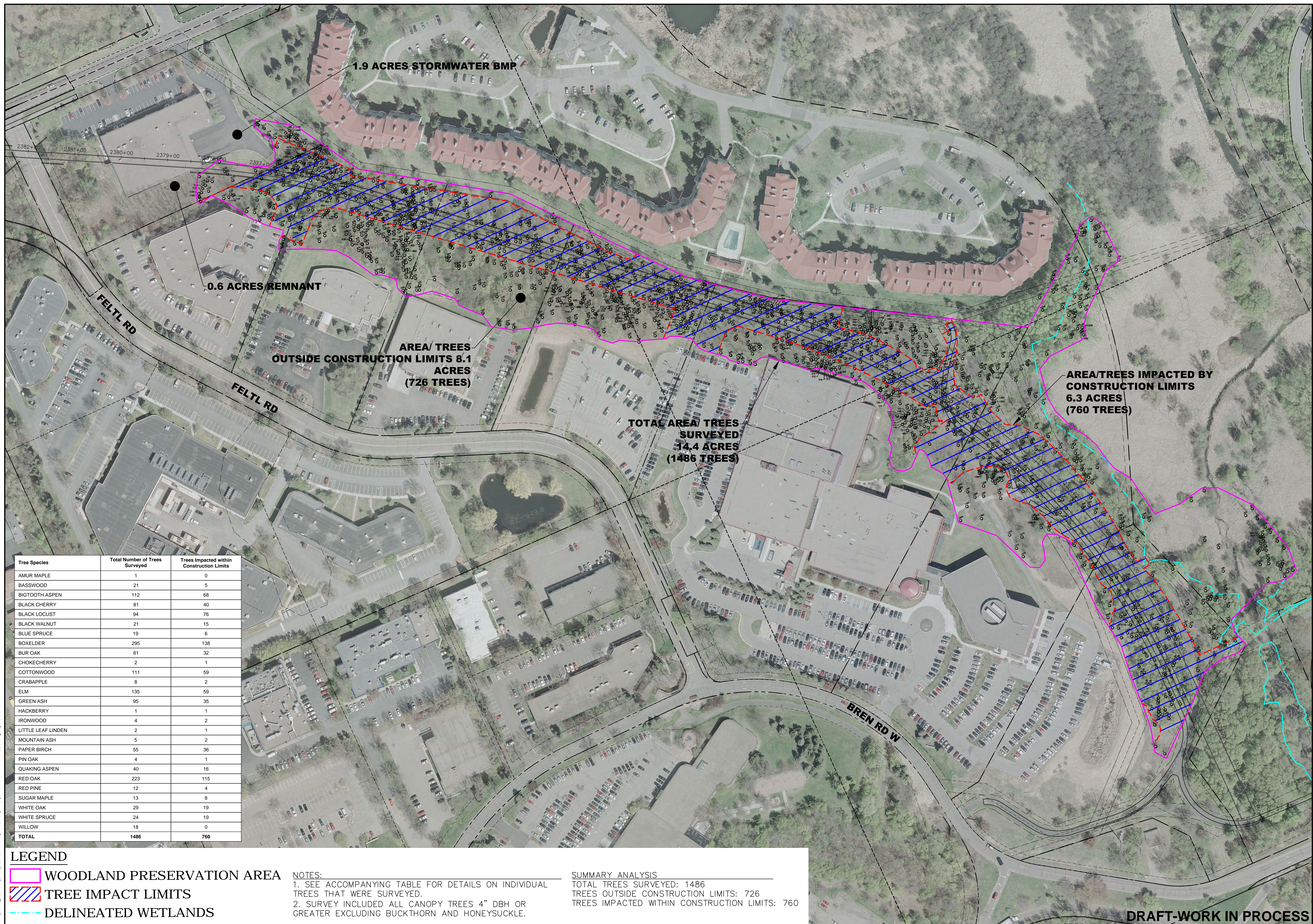
ID #	TREE SPECIES	DIAMETER AT BREST		WITHIN CONST. LIMITS*	LOCATION	
		HEIGHT (INCHES)	CONDITION		(NORTHING)	(EASTING)
1375	BOXELDER	30	FAIR	NO	492104.035	140060.709
1376	BOXELDER	28	FAIR	NO	492149.400	140054.281
1377	BASSWOOD	28	FAIR	NO	492145.759	139974.018
1378	BASSWOOD	15	FAIR	NO	492143.587	139952.663
1379	BASSWOOD	16	FAIR	NO	492132.459	139927.034
1380	GREEN ASH	14	FAIR	NO	491829.373	140374.219
1381	PIN OAK	4	FAIR	NO	491846.936	140368.536
1382	PIN OAK	14	FAIR	NO	491881.023	140361.051
1383	PIN OAK	12	FAIR	YES	491905.223	140363.783
1384	BLUE SPRUCE	12	FAIR	NO	491888.988	140385.474
1385	RED PINE	14	FAIR	NO	491881.341	140383.049
1386	BLUE SPRUCE	12	FAIR	NO	491878.363	140390.289
1387	RED PINE	14	FAIR	NO	491880.627	140397.613
1388	BLUE SPRUCE	14	FAIR	NO	491856.339	140388.134
1389	WHITE SPRUCE	12	FAIR	NO	491865.513	140416.566
1390	BLUE SPRUCE	14	FAIR	NO	491859.583	140417.446
1391	RED OAK	12	FAIR	YES	491836.262	140448.489
1392	GREEN ASH	10	FAIR	YES	491832.887	140441.161
1393	GREEN ASH	16	FAIR	YES	491817.347	140447.153
1394	BOXELDER	8	FAIR	YES	491862.707	140468.902
1395	BLUE SPRUCE	15	FAIR	NO	491872.366	140415.744
1396	WHITE SPRUCE	12	FAIR	NO	491894.048	140408.431
1397	WHITE SPRUCE	12	FAIR	NO	491886.642	140402.120
1398	BLUE SPRUCE	12	FAIR	NO	491896.933	140382.882
1399	WHITE SPRUCE	14	FAIR	NO	491909.253	140397.832
1400	WHITE SPRUCE	9	FAIR	YES	491923.243	140402.820
1401	WHITE SPRUCE	8	FAIR	YES	491913.791	140425.549
1402	GREEN ASH	8	FAIR	YES	491928.976	140431.994
1403	BLUE SPRUCE	8	FAIR	YES	491898.585	140447.054
1404	WHITE SPRUCE	6	FAIR	YES	491881.809	140443.952
1405	WHITE SPRUCE	10	FAIR	YES	491889.116	140431.067
1406	RED OAK	16	FAIR	YES	491869.635	140449.712
1407	BLUE SPRUCE	12	FAIR	YES	491843.961	140490.642
1408	RED PINE	15	FAIR	YES	491860.272	140500.462
1409	BLUE SPRUCE	14	FAIR	YES	491857.518	140511.450
1410	GREEN ASH	5	FAIR	YES	491846.662	140515.566
1411	BLUE SPRUCE	14	FAIR	YES	491847.507	140522.070
1412	WHITE SPRUCE	10	FAIR	YES	491837.308	140532.127
1413	BOXELDER	10	FAIR	YES	491872.751	140536.113
1414	WHITE SPRUCE	8	FAIR	YES	491872.127	140550.864
1415	WHITE SPRUCE	5	FAIR	YES	491885.802	140544.972
1416	WHITE SPRUCE	6	FAIR	YES	491888.435	140538.966
1417	GREEN ASH	18	FAIR	YES	491900.571	140532.995

Southwest Light Rail Project
Opus Area Tree Survey Table
City of Minnetonka

SRF Consulting Group
April 9, 2014

ID #	TREE SPECIES	DIAMETER AT BREST		WITHIN CONST. LIMITS*	LOCATION	
		HEIGHT (INCHES)	CONDITION		(NORTHING)	(EASTING)
1418	COTTONWOOD	24	FAIR	YES	491907.955	140538.081
1419	COTTONWOOD	28	FAIR	YES	491917.288	140492.207
1420	ELM	12	FAIR	YES	491909.780	140484.997
1421	BLUE SPRUCE	10	FAIR	YES	491910.386	140457.009
1422	COTTONWOOD	30	FAIR	YES	491919.621	140455.940
1423	GREEN ASH	8	FAIR	YES	491934.948	140431.198
1424	COTTONWOOD	8	FAIR	YES	491936.585	140529.520
1425	COTTONWOOD	28	FAIR	YES	491910.852	140545.571
1426	RED PINE	16	FAIR	NO	491917.466	140572.946
1427	COTTONWOOD	16	FAIR	NO	491928.990	140579.059
1428	RED PINE	12	FAIR	NO	491922.111	140590.706
1429	GREEN ASH	15	FAIR	NO	491922.136	140609.787
1430	BOXELDER	6	FAIR	NO	491911.347	140594.301
1431	GREEN ASH	4	FAIR	YES	491893.662	140599.204
1432	WHITE SPRUCE	12	FAIR	YES	491869.987	140582.499
1433	WHITE SPRUCE	12	FAIR	YES	491856.623	140578.752
1434	BLUE SPRUCE	14	FAIR	YES	491853.723	140568.205
1435	RED OAK	14	FAIR	YES	491877.049	140564.897
1436	WHITE SPRUCE	9	FAIR	YES	491843.347	140539.767
1437	WHITE SPRUCE	12	FAIR	YES	491857.755	140590.407
1438	WHITE SPRUCE	10	FAIR	YES	491863.399	140606.612
1439	BOXELDER	6	FAIR	YES	491883.485	140605.894
1440	WHITE SPRUCE	10	FAIR	YES	491878.380	140633.577
1441	BOXELDER	6	FAIR	NO	491915.203	140618.739
1442	GREEN ASH	4	FAIR	NO	491914.842	140622.702
1443	BOXELDER	8	FAIR	NO	491920.174	140636.269
1444	GREEN ASH	4	FAIR	NO	491909.736	140643.094
1445	GREEN ASH	4	FAIR	YES	491903.597	140653.719
1446	GREEN ASH	12	FAIR	NO	491912.986	140653.358
1447	BOXELDER	6	FAIR	NO	491931.554	140656.035
1448	COTTONWOOD	24	FAIR	YES	491926.799	140716.026
1449	BOXELDER	8	FAIR	NO	491888.274	140699.167
1450	PAPER BIRCH	4	FAIR	NO	491882.832	140690.461
1451	PAPER BIRCH	12	FAIR	NO	491877.928	140691.317
1452	PAPER BIRCH	4	FAIR	NO	491876.719	140687.403
1453	RED OAK	10	FAIR	NO	491881.309	140686.582
1454	COTTONWOOD	24	FAIR	NO	491885.677	140672.726
1455	ELM	6	FAIR	NO	491878.172	140676.951
1456	BOXELDER	7	FAIR	NO	491875.515	140670.569
1457	ELM	8	FAIR	NO	491873.202	140666.280
1458	PAPER BIRCH	12	FAIR	YES	491878.677	140655.346
1459	ELM	10	FAIR	NO	491874.036	140657.503
1460	PAPER BIRCH	16	FAIR	YES	491867.190	140652.336

ID #	TREE SPECIES	DIAMETER AT BREST		WITHIN CONST. LIMITS*	LOCATION	
		HEIGHT (INCHES)	CONDITION		(NORTHING)	(EASTING)
1461	PAPER BIRCH	4	FAIR	NO	491863.861	140668.449
1462	COTTONWOOD	42	FAIR	NO	491856.836	140671.847
1463	RED OAK	16	FAIR	YES	491854.097	140639.326
1464	RED OAK	14	FAIR	YES	491857.660	140631.837
1465	RED OAK	8	FAIR	YES	491858.935	140632.534
1466	RED OAK	7	FAIR	YES	491848.710	140615.587
1467	GREEN ASH	10	FAIR	YES	491858.033	140626.524
1468	BLACK CHERRY	8	FAIR	YES	491841.791	140627.837
1469	GREEN ASH	18	FAIR	YES	491836.624	140593.416
1470	BOXELDER	10	FAIR	NO	491828.940	140569.941
1471	BOXELDER	7	FAIR	NO	491815.388	140578.775
1472	ELM	10	FAIR	NO	491805.852	140572.189
1473	GREEN ASH	5	FAIR	NO	491803.768	140568.244
1474	ELM	12	FAIR	NO	491809.343	140562.674
1475	ELM	15	FAIR	NO	491817.047	140562.841
1476	ELM	10	FAIR	NO	491794.861	140558.680
1477	BOXELDER	10	FAIR	NO	491782.042	140545.660
1478	BOXELDER	20	FAIR	NO	491801.652	140552.486
1479	COTTONWOOD	24	DEAD	YES	491789.359	140518.926
1480	GREEN ASH	15	FAIR	NO	491805.261	140363.617
1481	GREEN ASH	10	FAIR	NO	491820.051	140391.407
1482	BOXELDER	8	FAIR	NO	491806.346	140400.433
1483	GREEN ASH	16	FAIR	NO	491807.830	140406.524
1484	SUGAR MAPLE	16	FAIR	NO	491780.058	140342.019
1485	GREEN ASH	14	FAIR	NO	491822.607	140326.640
1486	WILLOW	20	FAIR	NO	140018.730	491979.184
1487	COTTONWOOD	22	FAIR	YES	139988.724	491989.817



Tree Species	Total Number of Trees Surveyed	Trees Impacted within Construction Limits
AMUR MAPLE	1	0
BASSWOOD	21	5
BIGTOOTH ASPEN	112	68
BLACK CHERRY	81	40
BLACK LOCUST	94	76
BLACK WALNUT	21	15
BLUE SPRUCE	19	6
BOXELDER	295	138
BUR OAK	61	32
CHOKECHERRY	2	1
COTTONWOOD	111	59
CRABAPPLE	8	2
ELM	135	59
GREEN ASH	95	35
HACKBERRY	1	1
IRONWOOD	4	2
LITTLE LEAF LINDEN	2	1
MOUNTAIN ASH	5	2
PAPER BIRCH	55	36
PIN OAK	4	1
QUAKING ASPEN	40	16
RED OAK	223	115
RED PINE	12	4
SUGAR MAPLE	13	8
WHITE OAK	29	19
WHITE SPRUCE	24	19
WILLOW	18	0
TOTAL	1486	760

LEGEND

- WOODLAND PRESERVATION AREA
- TREE IMPACT LIMITS
- DELINEATED WETLANDS

NOTES:
 1. SEE ACCOMPANYING TABLE FOR DETAILS ON INDIVIDUAL TREES THAT WERE SURVEYED.
 2. SURVEY INCLUDED ALL CANOPY TREES 4" DBH OR GREATER EXCLUDING BUCKTHORN AND HONEYSUCKLE.

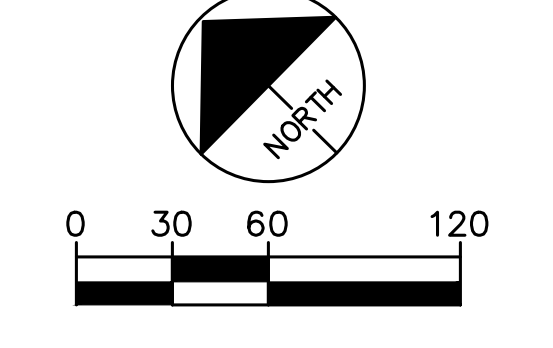
SUMMARY ANALYSIS
 TOTAL TREES SURVEYED: 1486
 TREES OUTSIDE CONSTRUCTION LIMITS: 726
 TREES IMPACTED WITHIN CONSTRUCTION LIMITS: 760

DRAFT-WORK IN PROCESS



SOUTHWEST LIGHT RAIL
 TI: #7 MINNETONKA/HOPKINS BRIDGE
 OPUS HILL WOODLAND PRESERVATION AREA
 TREE SURVEY AND IMPACTS

IRT: #7
 REV: 0
 DATE: 04/18/2014



Apr. 17. 2014. 09:20 am W:\32000_JEC-W\CAD\SEGMENT-W3\EXHIBITS\CIVIL\EXHIB-CIV-OPUS TREES.dwg By: Bascho